

10/13/2015

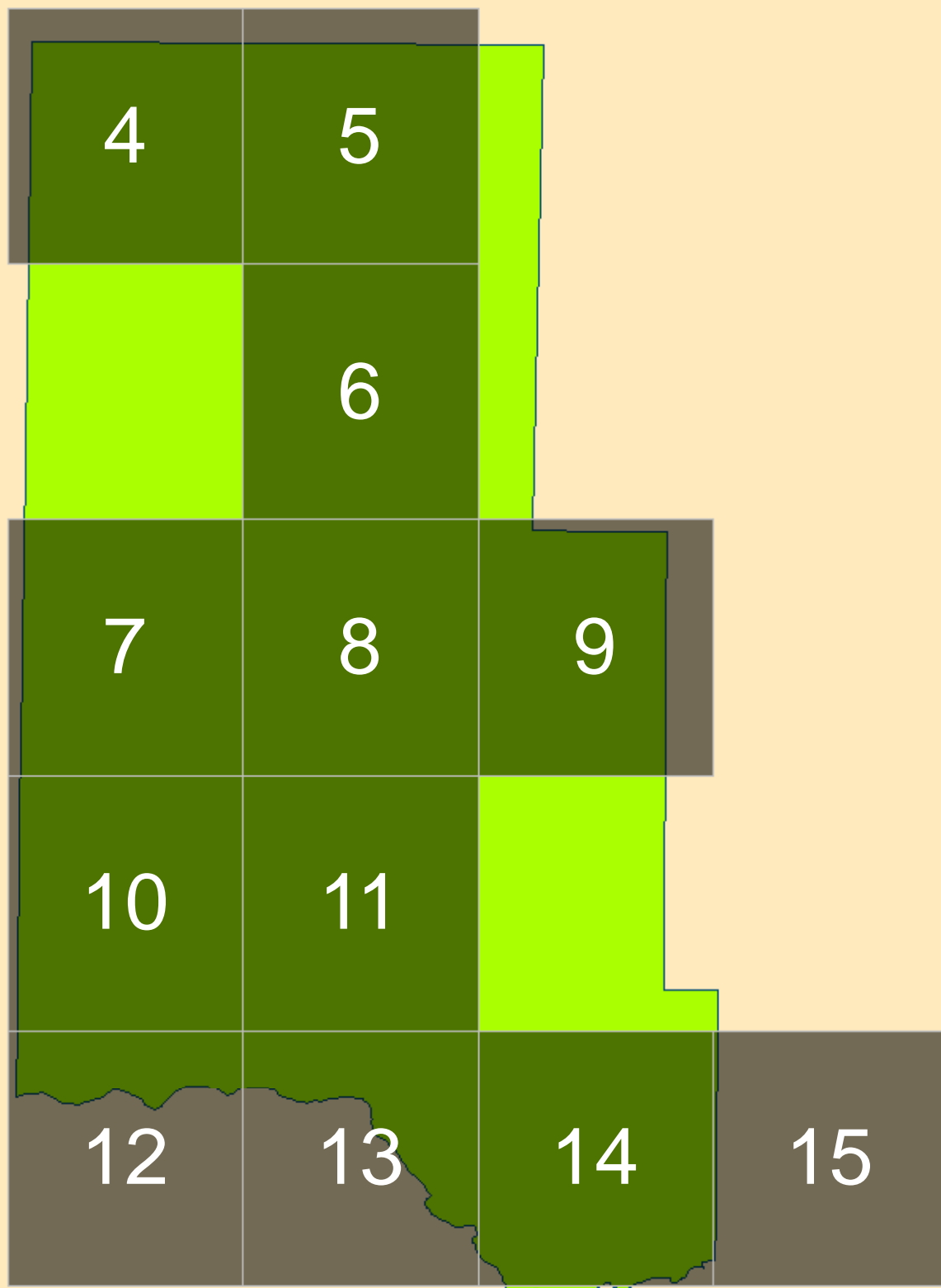


Idaho
Transportation
Department

BLISS HIGHWAY DISTRICT
MAP BOOK SCALE 40,480



PREPARED BY THE Idaho Transportation Department | jhill



BLISS HIGHWAY DISTRICT
LOCATOR GRID
MAP BOOK
PAGE NUMBERS

Legend



Mountain Peak



Summit



Airport



Cemetery



Range



Island

-- 4 or more thru lanes

sdeprod.SDE.IDAHO1TABLE Events

SURFTYPE

— EARTH

— GRAVEL

— F-Asphalt/oil treated gravel less than 1"

— G-1-Road or Cold Plant mix Asphalt

— G-2-Hot mix asphalt pavement

— J-Other (e.g., concrete, cobble stone or brick surface)

||||| 1/2 Jurisdiction

ROAD_STATUS

— Unimproved Road

— Routes

— Cities/Current

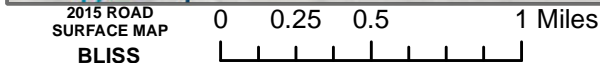
— Rivers and Streams

— Lakes/Reservoirs

PREPARED BY THE
IDAHO TRANSPORTATION DEPARTMENT
IN COOPERATION WITH THE
U.S. DEPARTMENT OF TRANSPORTATION
FEDERAL HIGHWAY ADMINISTRATION

Coordinate System: NAD 1983 Idaho TM
Projection: Transverse Mercator
Datum: North American 1983
False Easting: 2,500,000.0000
False Northing: 1,200,000.0000
Central Meridian: -114.0000
Scale Factor: 0.9996
Latitude Of Origin: 42.0000
Units: Meter

The Idaho Transportation Department (ITD) provides this information, including geographic data and any associated metadata "as is" without warranty of any kind, including but not limited to its completeness, fitness for a particular use, or accuracy of content, positional or otherwise. It is the sole responsibility of the user to determine the accuracy or usability of any information, data or metadata for his or her own purposes. In no event shall ITD have any liability whatsoever for damages of any kind arising out of the use of or reliance on the information, geographic data or metadata. In providing this information, data, metadata, or access to such, ITD assumes no obligation to assist the user in the use of such or in the development, use, or maintenance of any applications applied to or associated with such.



**2015 ROAD
SURFACE MAP**
**BLISS
HIGHWAY DISTRICT**
GOODING COUNTY
IDAHO

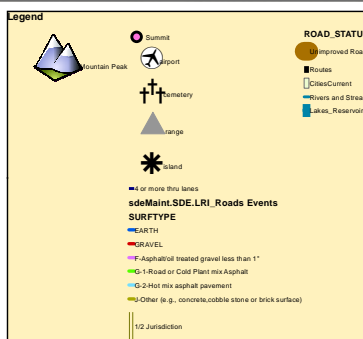
The Idaho Transportation Department (ITD) provides this information, including geographic data and any associated metadata "as is" without warranty of any kind, including but not limited to its completeness, fitness for a particular use, or accuracy of content, positional or otherwise. It is the sole responsibility of the user to determine the accuracy or usability of any information, data or metadata for his or her own purposes. In no event shall ITD have any liability whatsoever for damages of any kind arising out of the use of or reliance on the information, geographic data or metadata. In providing this information, data, metadata, or access to such, ITD assumes no obligation to assist the user in the use of such or in the development, use, or maintenance of any applications applied to or associated with such.

Date: 10/13/2015
Local Road System Revised October 1, 2015

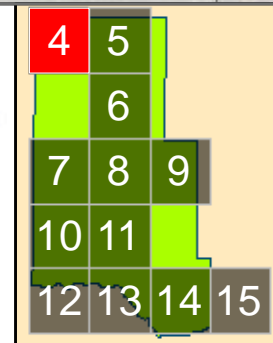
Path: W:\LocalRds\RdsSurface\RIMAPS\GoodingCounty\BlissHdMapBookRdsOnly\BlissHdMapBookCom.mxd

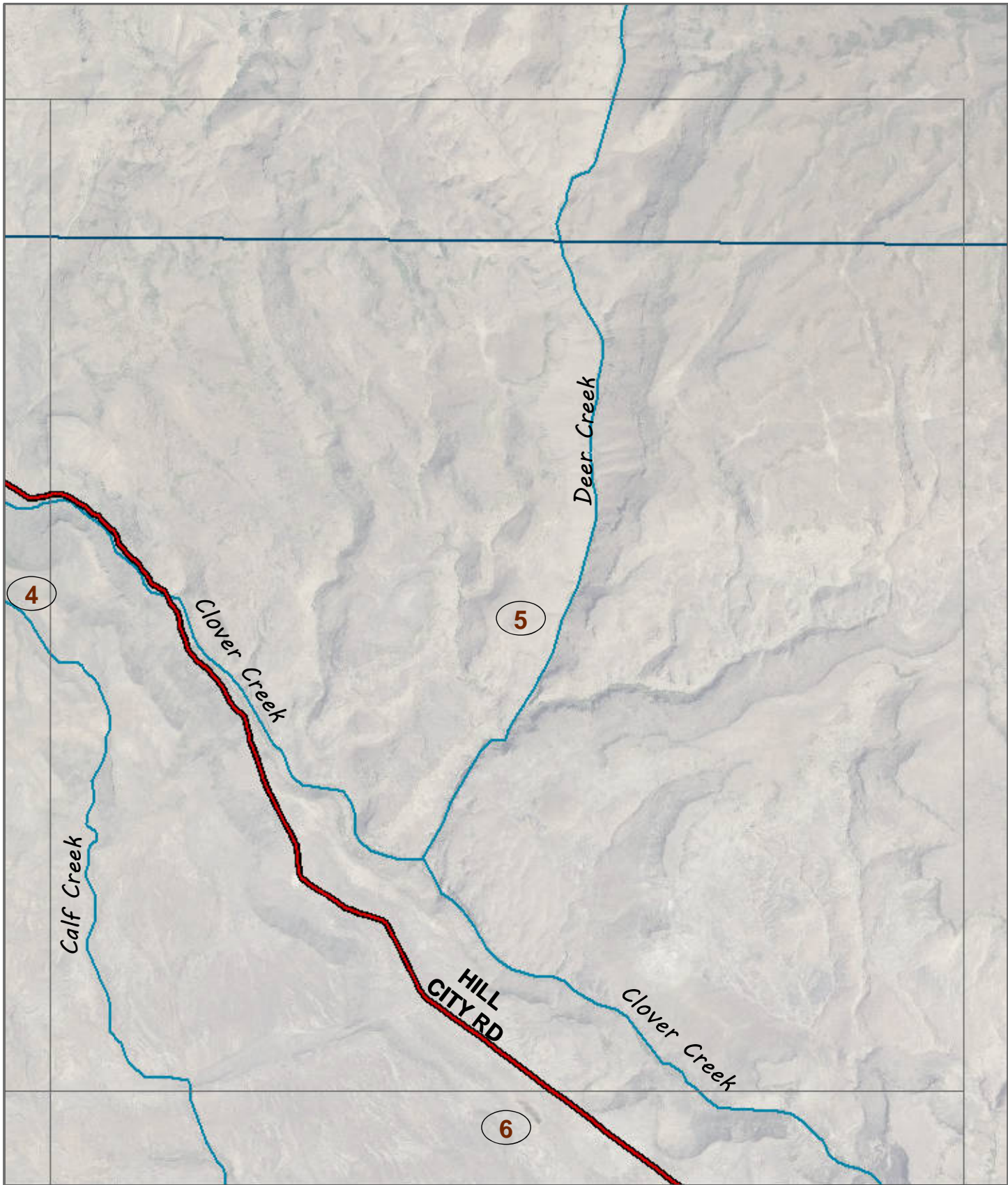
Scale: 1:40,480
Coordinate System: NAD 1983 Idaho TM
Projection: Transverse Mercator
Datum: North American 1983
False Easting: 2,500,000.0000
False Northing: 1,200,000.0000
Central Meridian: -114.0000
Scale Factor: 0.9996
Latitude Of Origin: 42.0000
Units: Meter

PREPARED BY THE
IDAHO TRANSPORTATION DEPARTMENT
IN COOPERATION WITH THE
U.S. DEPARTMENT OF TRANSPORTATION
FEDERAL HIGHWAY ADMINISTRATION



BLISS HD
4





2015 ROAD SURFACE MAP
BLISS HIGHWAY DISTRICT
GOODING COUNTY
IDAHO

The Idaho Transportation Department (ITD) provides this information, including geographic data and any associated metadata "as is" without warranty of any kind, including but not limited to its completeness, fitness for a particular use, or accuracy of content, positional or otherwise. It is the sole responsibility of the user to determine the accuracy or usability of any information, data or metadata for his or her own purposes. In no event shall ITD have any liability whatsoever for damages of any kind arising out of the use of or reliance on the information, geographic data or metadata. In providing this information, data, metadata, or access to such, ITD assumes no obligation to assist the user in the use of such or in the development, use, or maintenance of any applications applied to or associated with such.

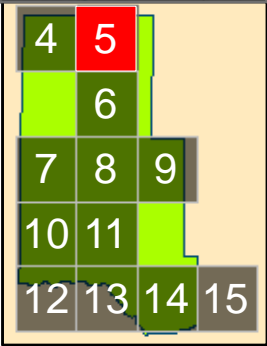
Date: 10/13/2015
Local Road System Revised October 1, 2015
Path: W:\LocalRds\RdSurface\RIMAPS\GoodingCounty\BlissHdMapBookRdsOnly\BlissHdMapBookCom.mxd

Scale: 1:40,480
Coordinate System: NAD 1983 Idaho TM
Projection: Transverse Mercator
Datum: North American 1983
False Easting: 2,500,000.0000
False Northing: 1,200,000.0000
Central Meridian: -114.0000
Scale Factor: 0.9996
Latitude Of Origin: 42.0000
Units: Meter

PREPARED BY THE
IDAHO TRANSPORTATION DEPARTMENT
IN COOPERATION WITH THE
U.S. DEPARTMENT OF TRANSPORTATION
FEDERAL HIGHWAY ADMINISTRATION



BLISS HD
5





2015 ROAD SURFACE MAP
BLISS HIGHWAY DISTRICT
GOODING COUNTY
IDAHO

The Idaho Transportation Department (ITD) provides this information, including geographic data and any associated metadata "as is" without warranty of any kind, including but not limited to its completeness, fitness for a particular use, or accuracy of content, positional or otherwise. It is the sole responsibility of the user to determine the accuracy or usability of any information, data or metadata for his or her own purposes. In no event shall ITD have any liability whatsoever for damages of any kind arising out of the use of or reliance on the information, geographic data or metadata. In providing this information, data, metadata, or access to such, ITD assumes no obligation to assist the user in the use of such or in the development, use, or maintenance of any applications applied to or associated with such.

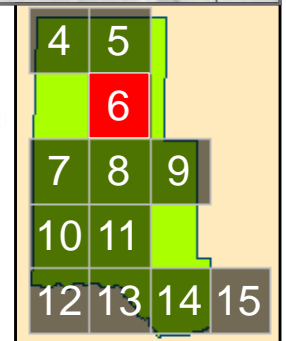
Date: 10/13/2015
Local Road System Revised October 1, 2015
Path: W:\LocalRds\RoadSurface\RIMAPS\GoodingCounty\BlissHdMapBookRdsOnly\BlissHdMapBookCom.mxd

Scale: 1:40,480
Coordinate System: NAD 1983 Idaho TM
Projection: Transverse Mercator
Datum: North American 1983
False Easting: 2,500,000.0000
False Northing: 1,200,000.0000
Central Meridian: -114.0000
Scale Factor: 0.9996
Latitude Of Origin: 42.0000
Units: Meter

PREPARED BY THE
IDAHO TRANSPORTATION DEPARTMENT
IN COOPERATION WITH THE
U.S. DEPARTMENT OF TRANSPORTATION
FEDERAL HIGHWAY ADMINISTRATION



BLISS HD
6





2015 ROAD SURFACE MAP
 BLISS
 HIGHWAY DISTRICT
 GOODING COUNTY
 IDAHO

The Idaho Transportation Department (ITD) provides this information, including geographic data and any associated metadata "as is" without warranty of any kind, including but not limited to its completeness, fitness for a particular use, or accuracy of content, positional or otherwise. It is the sole responsibility of the user to determine the accuracy or usability of any information, data or metadata for his or her own purposes. In no event shall ITD have any liability whatsoever for damages of any kind arising out of the use of or reliance on the information, geographic data or metadata. In providing this information, data, metadata, or access to such, ITD assumes no obligation to assist the user in the use of such or in the development, use, or maintenance of any applications applied to or associated with such.

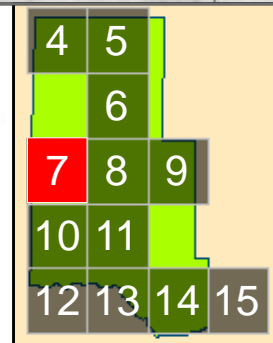
Date: 10/13/2015
 Local Road System Revised October 1, 2015
 Path: W:\LocalRds\RdSurface\RIMAPS\GoodingCounty\BlissHdMapBookRdsOnly\BlissHdMapBookCom.mxd

Scale: 1:40,480
 Coordinate System: NAD 1983 Idaho TM
 Projection: Transverse Mercator
 Datum: North American 1983
 False Easting: 2,500,000.0000
 False Northing: 1,200,000.0000
 Central Meridian: -114.0000
 Scale Factor: 0.9996
 Latitude Of Origin: 42.0000
 Units: Meter

PREPARED BY THE
 IDAHO TRANSPORTATION DEPARTMENT
 IN COOPERATION WITH THE
 U.S. DEPARTMENT OF TRANSPORTATION
 FEDERAL HIGHWAY ADMINISTRATION



BLISS HD
 7





2015 ROAD
SURFACE MAP
BLISS
HIGHWAY DISTRICT
GOODING COUNTY
IDAHO

The Idaho Transportation Department (ITD) provides this information, including geographic data and any associated metadata "as is" without warranty of any kind, including but not limited to its completeness, fitness for a particular use, or accuracy of content, positional or otherwise. It is the sole responsibility of the user to determine the accuracy or usability of any information, data or metadata for his or her own purposes. In no event shall ITD have any liability whatsoever for damages of any kind arising out of the use of or reliance on the information, geographic data or metadata. In providing this information, data, metadata, or access to such, ITD assumes no obligation to assist the user in the use of such or in the development, use, or maintenance of any applications applied to or associated with such.

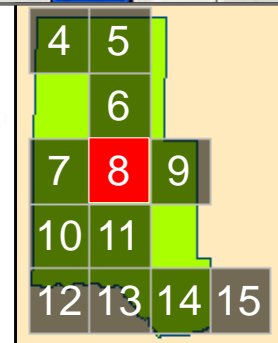
Date: 10/13/2015
Local Road System Revised October 1, 2015
Path: W:\LocalRds\RdsSurface\RMAPS\GoodingCounty\BlissHdMapBookRdsOnly\BlissHdMapBookCom.mxd

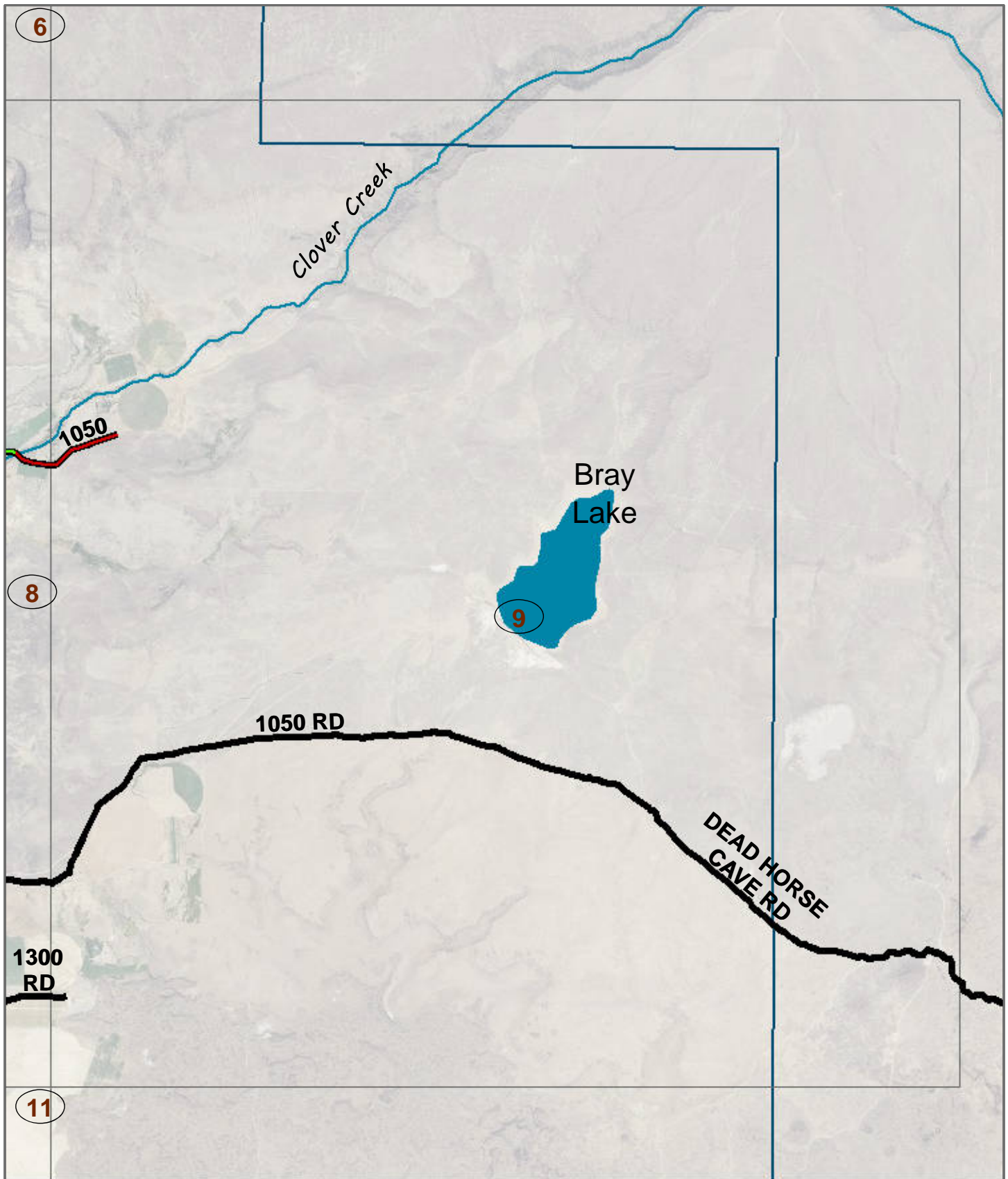
Scale: 1:40,480
Coordinate System: NAD 1983 Idaho TM
Projection: Transverse Mercator
Datum: North American 1983
False Easting: 2,500,000.0000
False Northing: -114.0000
Central Meridian: 114.0000
Scale Factor: 0.9996
Latitude Of Origin: 42.0000
Units: Meter

PREPARED BY THE
IDAHO TRANSPORTATION DEPARTMENT
IN COOPERATION WITH THE
U.S. DEPARTMENT OF TRANSPORTATION
FEDERAL HIGHWAY ADMINISTRATION



BLISS HD
8





2015 ROAD SURFACE MAP
BLISS
HIGHWAY DISTRICT
GOODING COUNTY
IDAHO

The Idaho Transportation Department (ITD) provides this information, including geographic data and any associated metadata "as is" without warranty of any kind, including but not limited to its completeness, fitness for a particular use, or accuracy of content, positional or otherwise. It is the sole responsibility of the user to determine the accuracy or usability of any information, data or metadata for his or her own purposes. In no event shall ITD have any liability whatsoever for damages of any kind arising out of the use of or reliance on the information, geographic data or metadata. In providing this information, data, metadata, or access to such, ITD assumes no obligation to assist the user in the use of such or in the development, use, or maintenance of any applications applied to or associated with such.

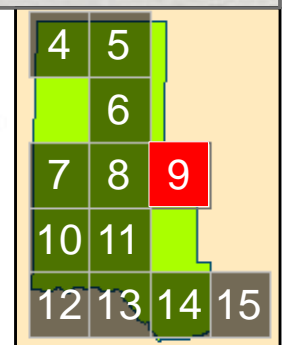
Date: 10/13/2015
Local Road System Revised October 1, 2015
Path: W:\LocalRds\RdsSurface\RIMAPS\GoodingCounty\BlissHdMapBookRdsOnly\BlissHdMapBookCom.mxd

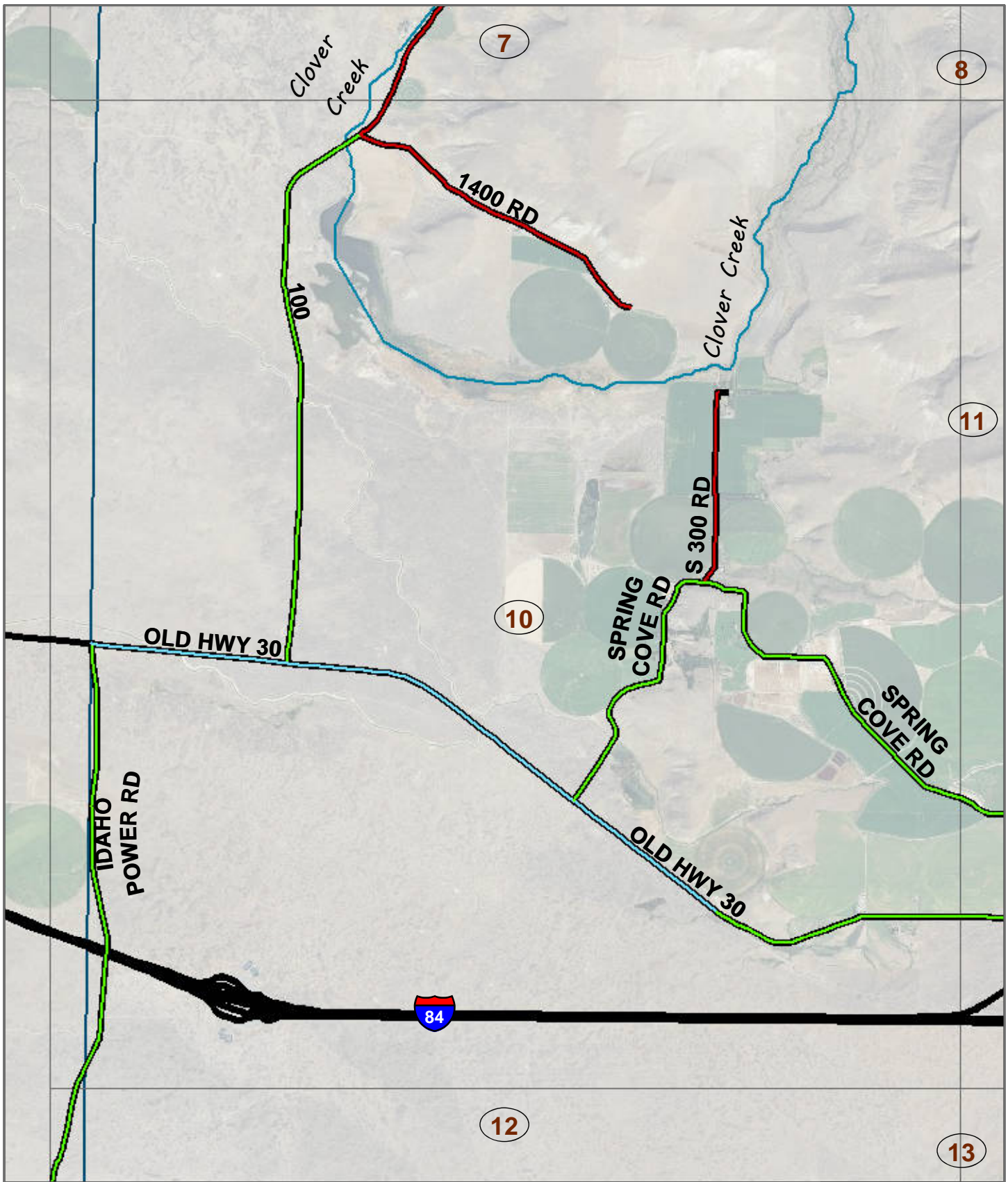
Scale: 1:40,480
Coordinate System: NAD 1983 Idaho TM
Projection: Transverse Mercator
Datum: North American 1983
False Easting: 2,500,000.0000
False Northing: 1,200,000.0000
Central Meridian: -114.0000
Scale Factor: 0.9996
Latitude Of Origin: 42.0000
Units: Meter

PREPARED BY THE
IDAHO TRANSPORTATION DEPARTMENT
IN COOPERATION WITH THE
U.S. DEPARTMENT OF TRANSPORTATION
FEDERAL HIGHWAY ADMINISTRATION



BLISS HD
9





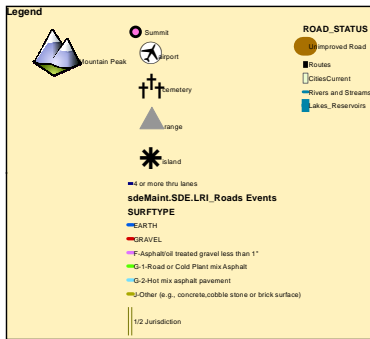
2015 ROAD SURFACE MAP
BLISS
HIGHWAY DISTRICT
GOODING COUNTY
IDAHO

The Idaho Transportation Department (ITD) provides this information, including geographic data and any associated metadata "as is" without warranty of any kind, including but not limited to its completeness, fitness for a particular use, or accuracy of content, positional or otherwise. It is the sole responsibility of the user to determine the accuracy or usability of any information, data or metadata for his or her own purposes. In no event shall ITD have any liability whatsoever for damages of any kind arising out of the use of or reliance on the information, geographic data or metadata. In providing this information, data, metadata, or access to such, ITD assumes no obligation to assist the user in the use of such or in the development, use, or maintenance of any applications applied to or associated with such.

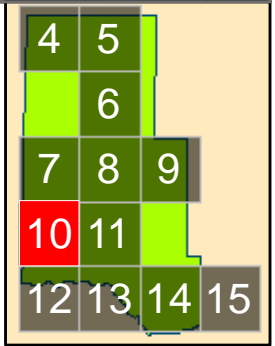
Date: 10/13/2015
Local Road System Revised October 1, 2015
Path: W:\LocalRds\RdsSurface\RMAPS\GoodingCounty\BlissHdMapBookRdsOnly\BlissHdMapBookCom.mxd

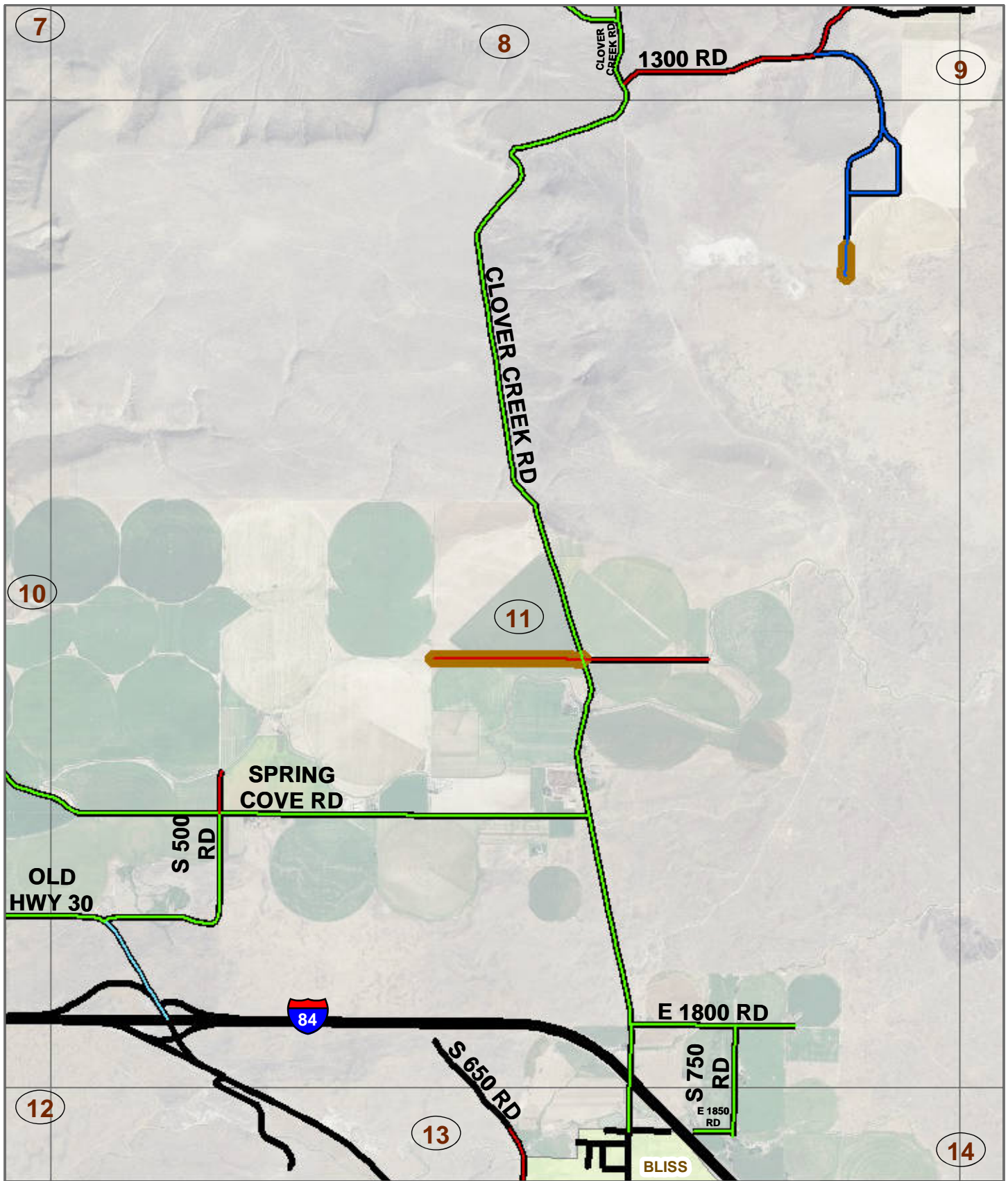
Scale: 1:40,480
Coordinate System: NAD 1983 Idaho TM
Projection: Transverse Mercator
Datum: North American 1983
False Easting: 2,500,000.0000
False Northing: 1,200,000.0000
Central Meridian: -114.0000
Scale Factor: 0.9996
Latitude Of Origin: 42.0000
Units: Meter

PREPARED BY THE
IDAHO TRANSPORTATION DEPARTMENT
IN COOPERATION WITH THE
U.S. DEPARTMENT OF TRANSPORTATION
FEDERAL HIGHWAY ADMINISTRATION



BLISS HD
10





2015 ROAD SURFACE MAP
BLISS
 HIGHWAY DISTRICT
 GOODING COUNTY
 IDAHO

The Idaho Transportation Department (ITD) provides this information, including geographic data and any associated metadata "as is" without warranty of any kind, including but not limited to its completeness, fitness for a particular use, or accuracy of content, positional or otherwise. It is the sole responsibility of the user to determine the accuracy or usability of any information, data or metadata for his or her own purposes. In no event shall ITD have any liability whatsoever for damages of any kind arising out of the use of or reliance on the information, geographic data or metadata. In providing this information, data, metadata, or access to such, ITD assumes no obligation to assist the user in the use of such or in the development, use, or maintenance of any applications applied to or associated with such.

Date: 10/13/2015
 Local Road System Revised October 1, 2015
 Path: W:\LocalRds\RdSurface\RIMAPS\GoodingCounty\BlissHdMapBookRdsOnly\BlissHdMapBookCom.mxd

Scale: 1:40,480
 Coordinate System: NAD 1983 Idaho TM
 Projection: Transverse Mercator
 Datum: North American 1983
 False Easting: 2,500,000.0000
 False Northing: 1,200,000.0000
 Central Meridian: -114.0000
 Scale Factor: 0.9996
 Latitude Of Origin: 42.0000
 Units: Meter

PREPARED BY THE
 IDAHO TRANSPORTATION DEPARTMENT
 IN COOPERATION WITH THE
 U.S. DEPARTMENT OF TRANSPORTATION
 FEDERAL HIGHWAY ADMINISTRATION

Mountain Peak
 Airport
 Boundary
 Range
 Island
 4 or more thru lanes
 sdeMaint.SDE.LRI_Roads Events

ROAD_STATUS
 Improved Road
 Routes
 Routes Current
 Streams and Streams
 Swamp, Wetlands

SURFTYPE
 GRAVEL
 Alphabetical treated gravel less than 1"
 Asphalt or Cold Plant mix Asphalt
 2-Hot mix asphalt pavement
 Other (e.g., concrete, cobble stone or brick surface)
 Jurisdiction



BLISS HD
 11

4	5	
	6	
7	8	9
10	11	
12	13	14
15		



2015 ROAD SURFACE MAP
BLISS
HIGHWAY DISTRICT
GOODING COUNTY
IDAHO

The Idaho Transportation Department (ITD) provides this information, including geographic data and any associated metadata "as is" without warranty of any kind, including but not limited to its completeness, fitness for a particular use, or accuracy of content, positional or otherwise. It is the sole responsibility of the user to determine the accuracy or usability of any information, data or metadata for his or her own purposes. In no event shall ITD have any liability whatsoever for damages of any kind arising out of the use of or reliance on the information, geographic data or metadata. In providing this information, data, metadata, or access to such, ITD assumes no obligation to assist the user in the use of such or in the development, use, or maintenance of any applications applied to or associated with such.

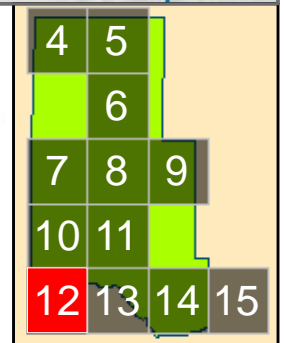
Date: 10/13/2015
Local Road System Revised October 1, 2015
Path: W:\LocalRds\RdsSurface\RIMAPS\GoodingCounty\BlissHdMapBookRdsOnly\BlissHdMapBookCom.mxd

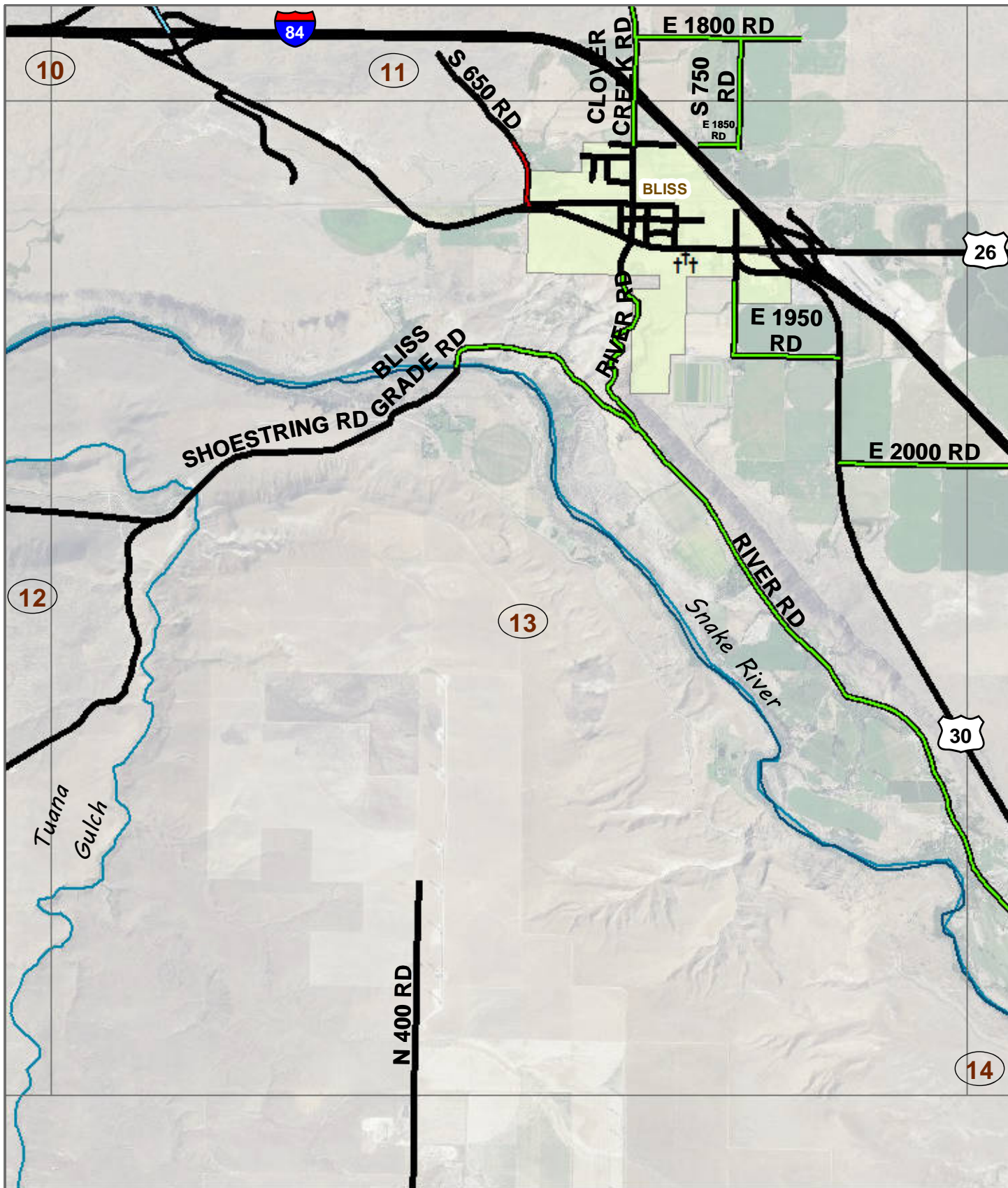
Scale: 1:40,480
Coordinate System: NAD 1983 Idaho TM
Projection: Transverse Mercator
Datum: North American 1983
False Easting: 2,500,000.0000
False Northing: 1,200,000.0000
Central Meridian: -114.0000
Scale Factor: 0.9996
Latitude Of Origin: 42.0000
Units: Meter

PREPARED BY THE
IDAHO TRANSPORTATION DEPARTMENT
IN COOPERATION WITH THE
U.S. DEPARTMENT OF TRANSPORTATION
FEDERAL HIGHWAY ADMINISTRATION



BLISS HD
12





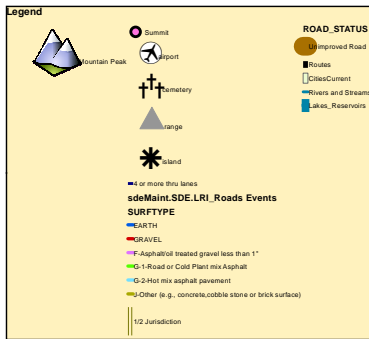
2015 ROAD SURFACE MAP
BLISS
 HIGHWAY DISTRICT
 GOODING COUNTY
 IDAHO

Scale: 1:40,480
 Coordinate System: NAD 1983 Idaho TM
 Projection: Transverse Mercator
 Datum: North American 1983
 False Easting: 2,500,000.0000
 False Northing: 1,200,000.0000
 Central Meridian: -114.0000
 Scale Factor: 0.9996
 Latitude Of Origin: 42.0000
 Units: Meter

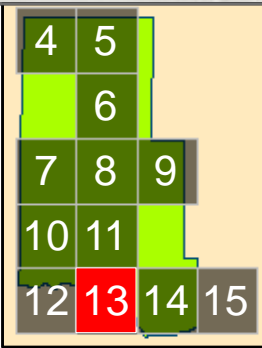
The Idaho Transportation Department (ITD) provides this information, including geographic data and any associated metadata "as is" without warranty of any kind, including but not limited to its completeness, fitness for a particular use, or accuracy of content, positional or otherwise. It is the sole responsibility of the user to determine the accuracy or usability of any information, data or metadata for his or her own purposes. In no event shall ITD have any liability whatsoever for damages of any kind arising out of the use of or reliance on the information, geographic data or metadata. In providing this information, data, metadata, or access to such, ITD assumes no obligation to assist the user in the use of such or in the development, use, or maintenance of any applications applied to or associated with such.

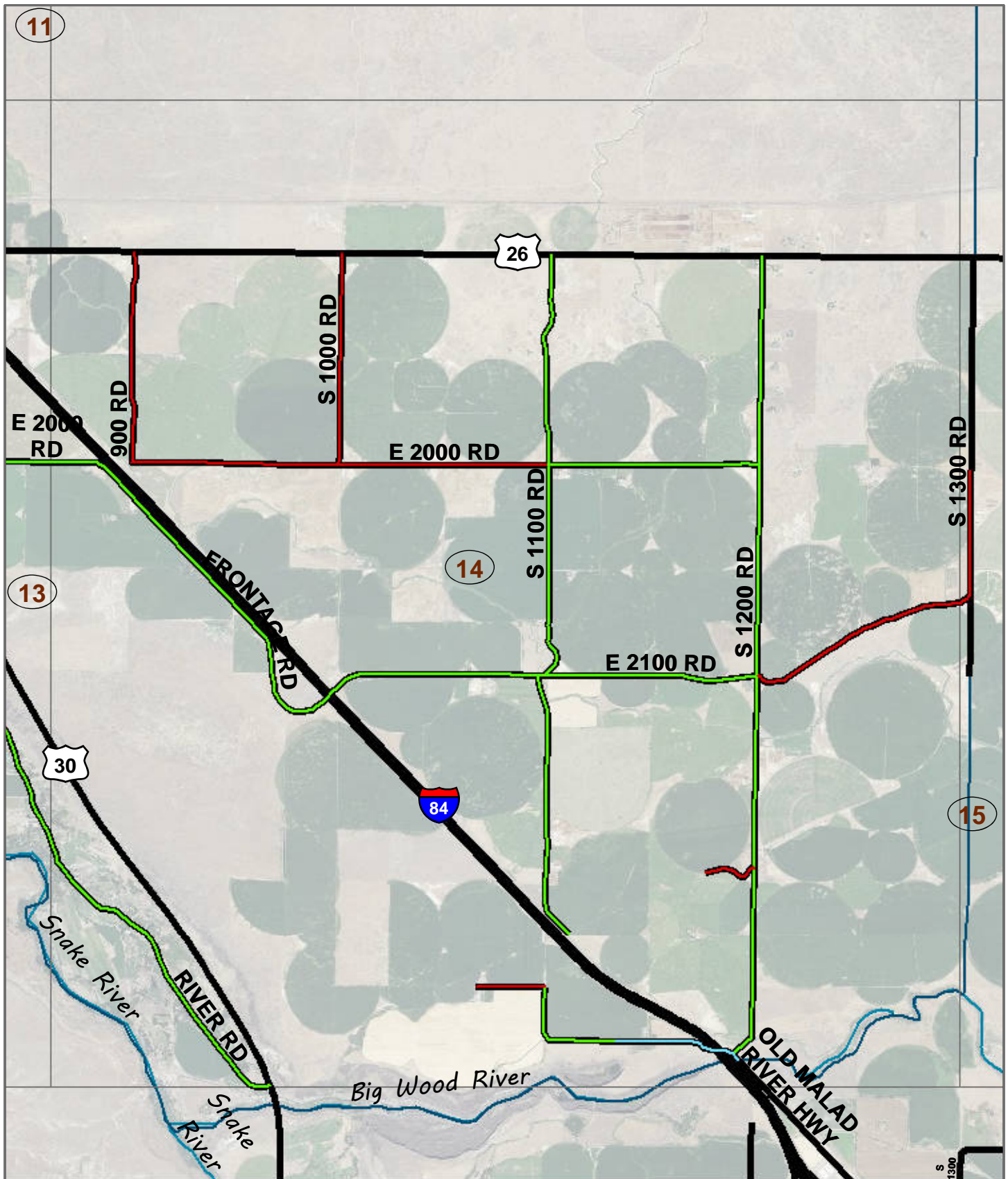
Date: 10/13/2015
 Local Road System Revised October 1, 2015
 Path: W:\LocalRds\RdsSurface\RIMAPS\GoodingCounty\BlissHdMapBookRdsOnly\BlissHdMapBookCom.mxd

PREPARED BY THE
 IDAHO TRANSPORTATION DEPARTMENT
 IN COOPERATION WITH THE
 U.S. DEPARTMENT OF TRANSPORTATION
 FEDERAL HIGHWAY ADMINISTRATION



BLISS HD
 13





2015 ROAD SURFACE MAP
BLISS
HIGHWAY DISTRICT
GOODING COUNTY
IDAHO

The Idaho Transportation Department (ITD) provides this information, including geographic data and any associated metadata "as is" without warranty of any kind, including but not limited to its completeness, fitness for a particular use, or accuracy of content, positional or otherwise. It is the sole responsibility of the user to determine the accuracy or usability of any information, data or metadata for his or her own purposes. In no event shall ITD have any liability whatsoever for damages of any kind arising out of the use of or reliance on the information, geographic data or metadata. In providing this information, data, metadata, or access to such, ITD assumes no obligation to assist the user in the use of such or in the development, use, or maintenance of any applications applied to or associated with such.

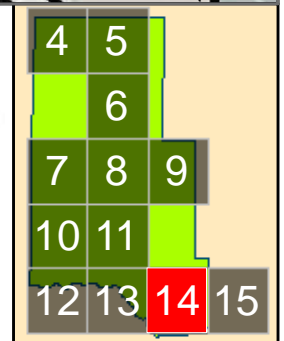
Date: 10/13/2015
Local Road System Revised October 1, 2015
Path: W:\LocalRds\RdSurface\RIMAPS\GoodingCounty\BlissHdMapBookRdsOnly\BlissHdMapBookCom.mxd

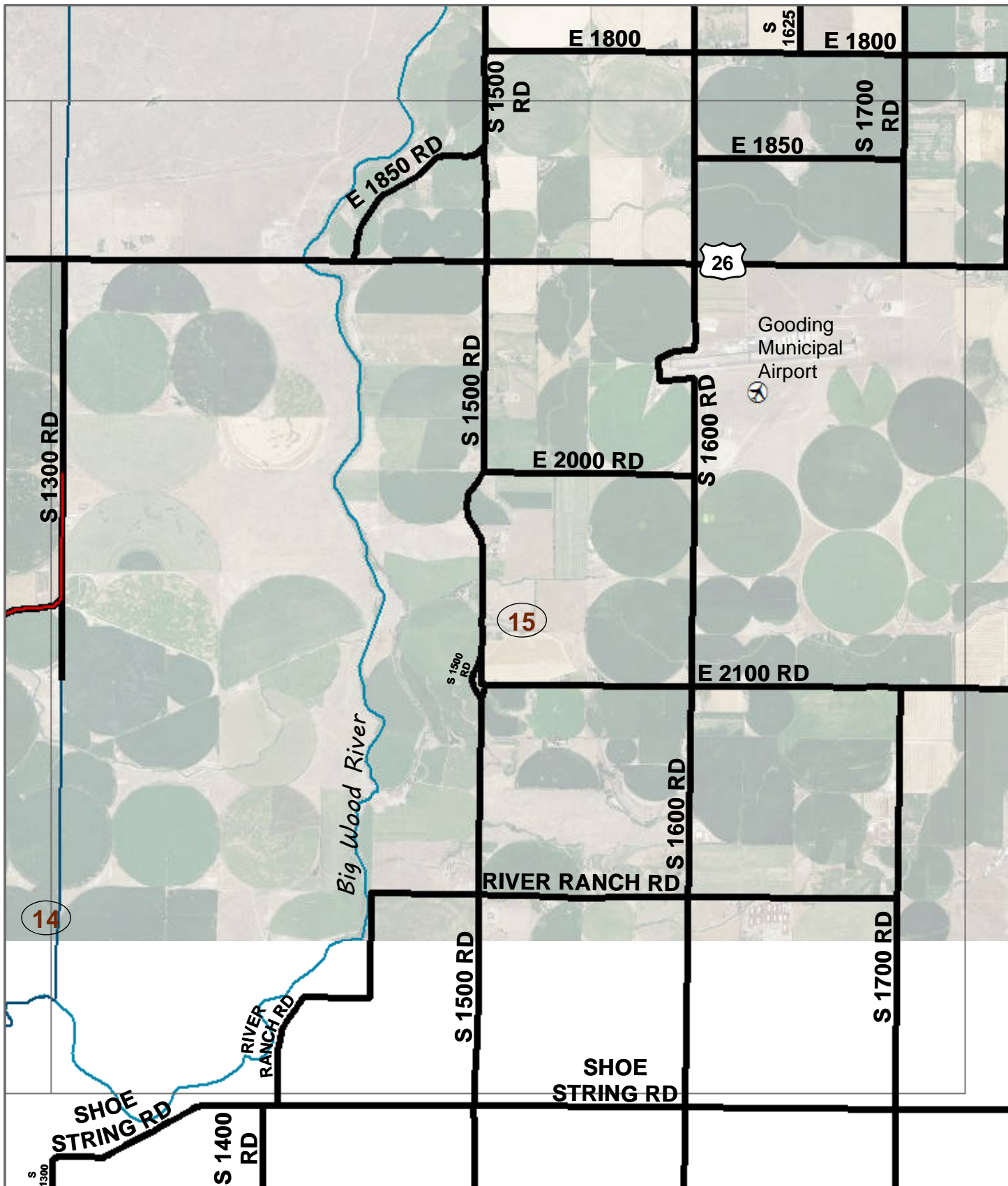
Scale: 1:40,480
Coordinate System: NAD 1983 Idaho TM
Projection: Transverse Mercator
Datum: North American 1983
False Easting: 2,500,000.0000
False Northing: 1,200,000.0000
Central Meridian: -114.0000
Scale Factor: 0.9996
Latitude Of Origin: 42.0000
Units: Meter

PREPARED BY THE
IDAHO TRANSPORTATION DEPARTMENT
IN COOPERATION WITH THE
U.S. DEPARTMENT OF TRANSPORTATION
FEDERAL HIGHWAY ADMINISTRATION



BLISS HD
14





2015 ROAD SURFACE MAP
BLISS
 HIGHWAY DISTRICT
 GOODING COUNTY
 IDAHO

The Idaho Transportation Department (ITD) provides this information, including geographic data and any associated metadata "as is" without warranty of any kind, including but not limited to its completeness, fitness for a particular use, or accuracy of content, positional or otherwise. It is the sole responsibility of the user to determine the accuracy or usability of any information, data or metadata for his or her own purposes. In no event shall ITD have any liability whatsoever for damages of any kind arising out of the use of or reliance on the information, geographic data or metadata. In providing this information, data, metadata, or access to such, ITD assumes no obligation to assist the user in the use of such or in the development, use, or maintenance of any applications applied to or associated with such.

Date: 10/13/2015
 Local Road System Revised October 1, 2015
 Path: W:\LocalRds\RdsSurface\RMAPS\GoodingCounty\BlissHdMapBookRdsOnly\BlissHdMapBookCom.mxd

Scale: 1:40,480
 Coordinate System: NAD 1983 Idaho TM
 Projection: Transverse Mercator
 Datum: North American 1983
 False Easting: 2,500,000.0000
 False Northing: -114.0000
 Central Meridian: -114.0000
 Scale Factor: 0.9996
 Latitude Of Origin: 42.0000
 Units: Meter

PREPARED BY THE
 IDAHO TRANSPORTATION DEPARTMENT
 IN COOPERATION WITH THE
 U.S. DEPARTMENT OF TRANSPORTATION
 FEDERAL HIGHWAY ADMINISTRATION



BLISS HD
 15

