

10/7/2015

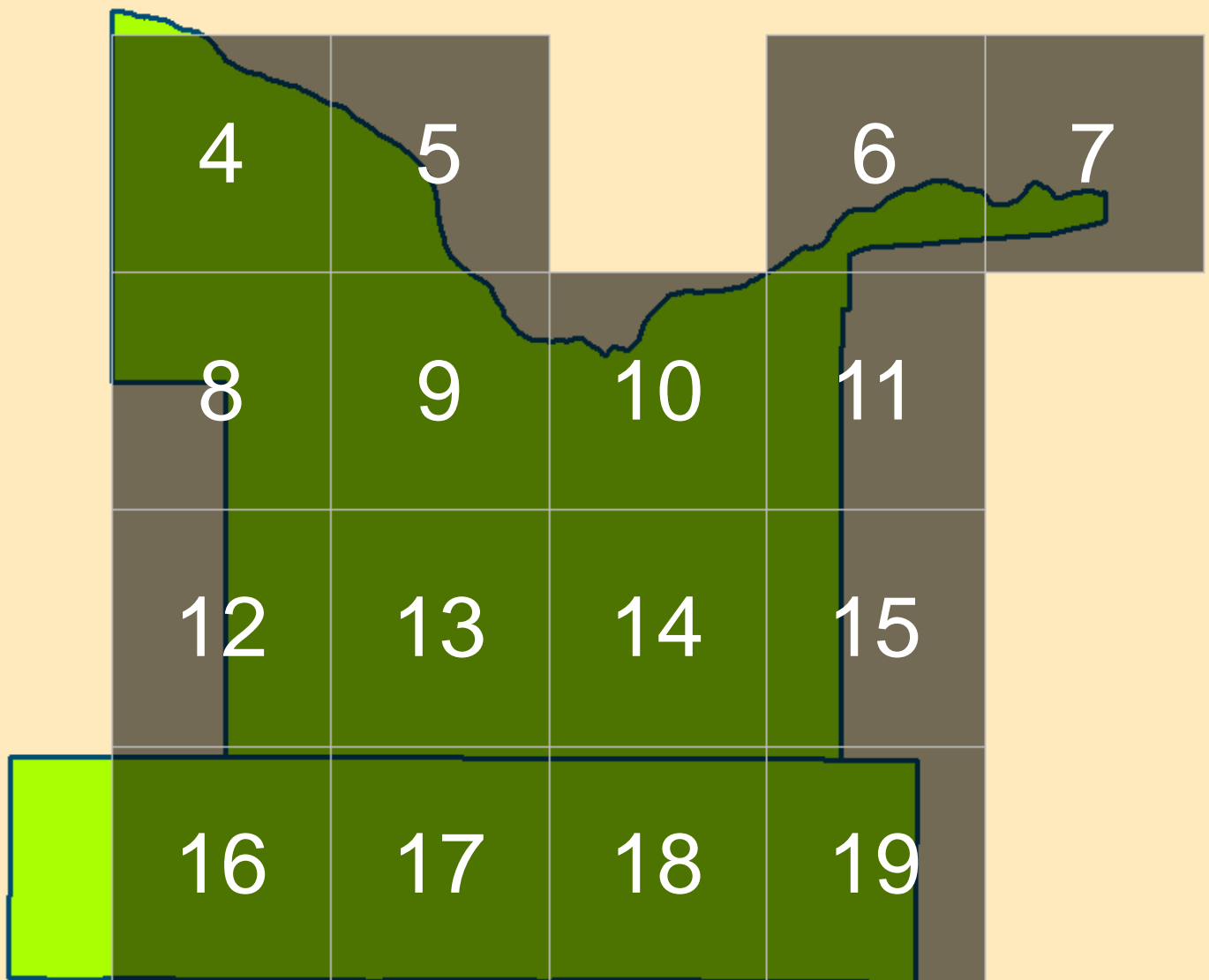


Idaho
Transportation
Department

MURTAUGH HIGHWAY DISTRICT MAP BOOK SCALE 26,985



PREPARED BY THE Idaho Transportation Department | jhill

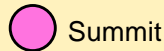


MURTAUGH HIGHWAY DISTRICT LOCATOR GRID MAP BOOK PAGE NUMBERS

Legend



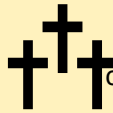
Mountain Peak



Summit



Airport



Cemetery



range



island

--4 or more thru lanes

sdeprod.SDE.IDAHO1TABLE Events

SURFTYPE

—EARTH

—GRAVEL

—F-Asphalt/oil treated gravel less than 1"

—G-1-Road or Cold Plant mix Asphalt

—G-2-Hot mix asphalt pavement

—J-Other (e.g., concrete, cobble stone or brick surface)

||||| 1/2 Jurisdiction

ROAD_STATUS

—Unimproved Road

—Routes

—Map Sheets

—CitiesCurrent

—Lakes_Reservoirs

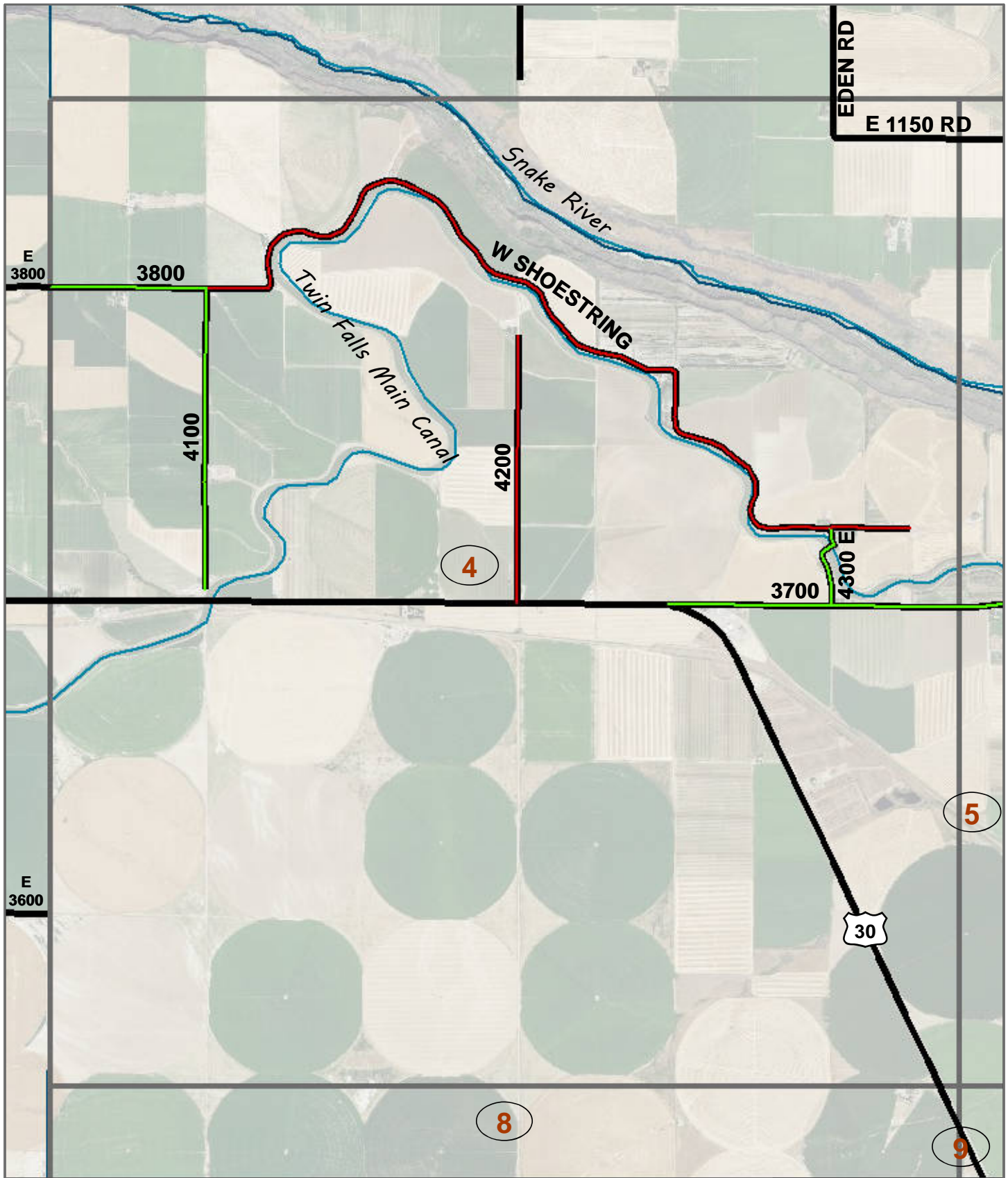
—Rivers and Streams

PREPARED BY THE
IDAHO TRANSPORTATION DEPARTMENT
IN COOPERATION WITH THE
U.S. DEPARTMENT OF TRANSPORTATION
FEDERAL HIGHWAY ADMINISTRATION

Coordinate System: NAD 1983 Idaho TM
Projection: Transverse Mercator
Datum: North American 1983
False Easting: 2,500,000.0000
False Northing: 1,200,000.0000
Central Meridian: -114.0000
Scale Factor: 0.9996
Latitude Of Origin: 42.0000
Units: Meter

The Idaho Transportation Department (ITD) provides this information, including geographic data and any associated metadata "as is" without warranty of any kind, including but not limited to its completeness, fitness for a particular use, or accuracy of content, positional or otherwise. It is the sole responsibility of the user to determine the accuracy or usability of any information, data or metadata for his or her own purposes. In no event shall ITD have any liability whatsoever for damages of any kind arising out of the use of or reliance on the information, geographic data or metadata. In providing this information, data, metadata, or access to such, ITD assumes no obligation to assist the user in the use of such or in the development, use, or maintenance of any applications applied to or associated with such.





**MURTAUGH
HIGHWAY DISTRICT
TWIN FALLS COUNTY
CASSIA COUNTY
IDAHO**

The Idaho Transportation Department (ITD) provides this information, including geographic data and any associated metadata "as is" without warranty of any kind, including but not limited to its completeness, fitness for a particular use, or accuracy of content, positional or otherwise. It is the sole responsibility of the user to determine the accuracy or usability of any information, data or metadata for his or her own purposes. In no event shall ITD have any liability whatsoever for damages of any kind arising out of the use of or reliance on the information, geographic data or metadata. In providing this information, data, metadata, or access to such, ITD assumes no obligation to assist the user in the use of such or in the development, use, or maintenance of any applications applied to or associated with such.

Date: 10/8/2015

Local Road System Revised October 01, 2015

Path: W:\LocalRds\RdSurface\RIMAPS\TwinFallsCounty\MurtaughHdMapBookRdsOnly\MurtaughHdMapBookCom.mxd

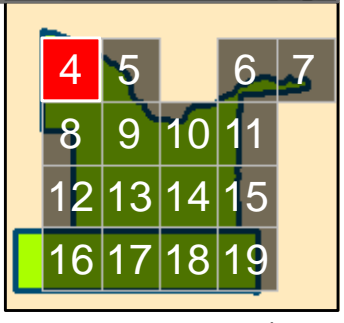
Scale: 1:26,985
Coordinate System: NAD 1983 Idaho TM
Projection: Transverse Mercator
Datum: North American 1983
False Easting: 2,500,000.0000
False Northing: 1,200,000.0000
Central Meridian: -114.0000
Scale Factor: 0.9996
Latitude Of Origin: 42.0000
Units: Meter



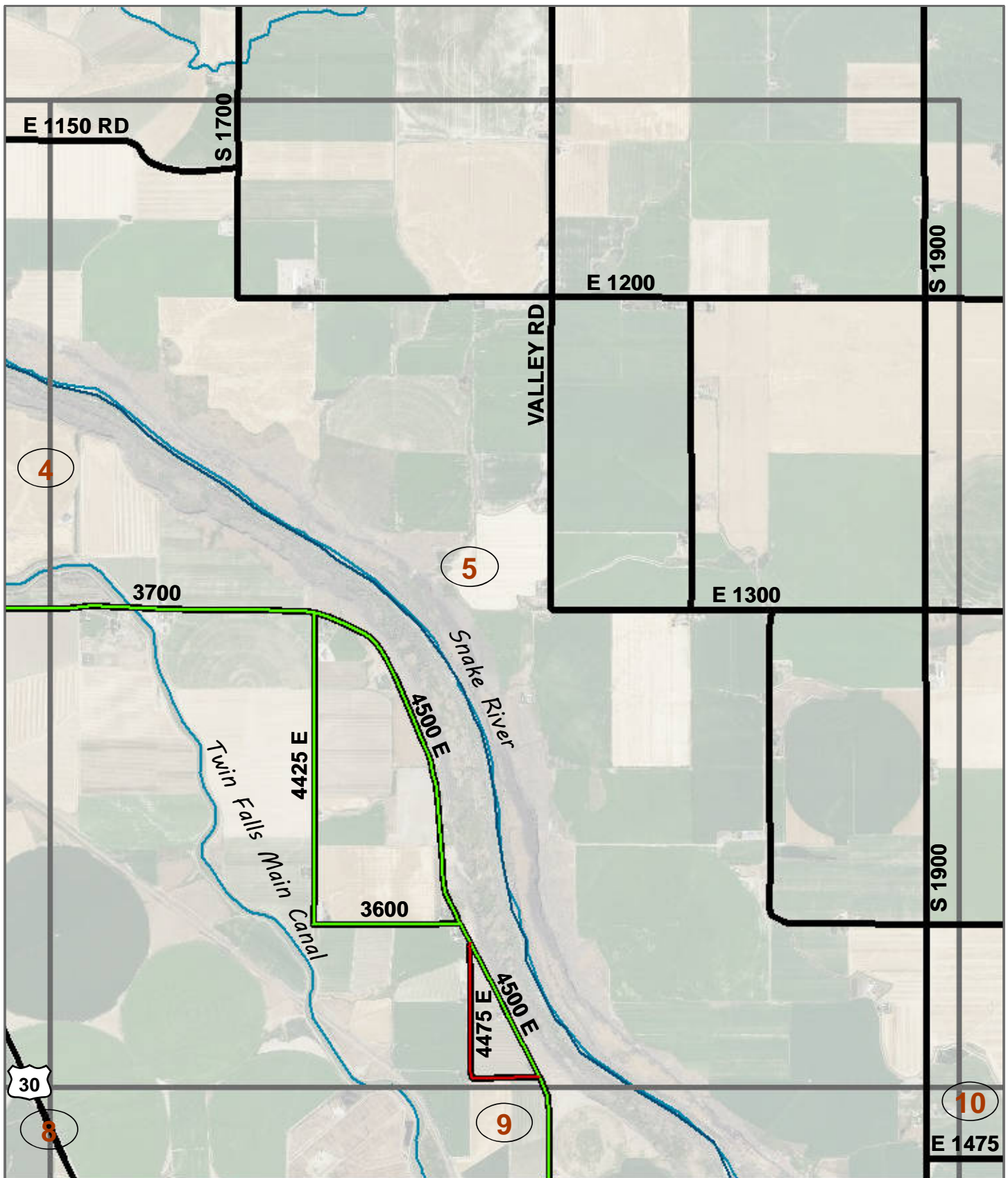
PREPARED BY THE
IDAHO TRANSPORTATION DEPARTMENT
IN COOPERATION WITH THE
U.S. DEPARTMENT OF TRANSPORTATION
FEDERAL HIGHWAY ADMINISTRATION

Legend

- Mountain Peak
- Airport
- Interchange
- Bridge
- Island
- 1/2 Jurisdiction
- Summit
- Improved Road
- Truckee
- Map Sheets
- County
- Water, Reservoir
- Waters and Streams
- Side Maint. SDELR, Roads Events
- SURFTYPE
 - Asphalt
 - Gravel
 - Asphalt treated gravel less than 1"
 - Hot mix asphalt
 - Hot mix asphalt pavement
 - Other (e.g., concrete, cobble stone or brick surface)



MURTAUGH HD



2015 ROAD SURFACE MAP 0 0.25 0.5 1 Miles

**MURTAUGH
HIGHWAY DISTRICT
TWIN FALLS COUNTY
CASSIA COUNTY
IDAHO**

The Idaho Transportation Department (ITD) provides this information, including geographic data and any associated metadata "as is" without warranty of any kind, including but not limited to its completeness, fitness for a particular use, or accuracy of content, positional or otherwise. It is the sole responsibility of the user to determine the accuracy or usability of any information, data or metadata for his or her own purposes. In no event shall ITD have any liability whatsoever for damages of any kind arising out of the use of or reliance on the information, geographic data or metadata. In providing this information, data, metadata, or access to such, ITD assumes no obligation to assist the user in the use of such or in the development, use, or maintenance of any applications applied to or associated with such.

Date: 10/8/2015

Local Road System Revised October 01, 2015

Path: W:\LocalRds\RdSurface\RIMAPS\TwinFallsCounty\MurtaughHdMapBookRdsOnly\MurtaughHdMapBookCom.mxd

Scale: 1:26,985
Coordinate System: NAD 1983 Idaho TM
Projection: Transverse Mercator
Datum: North American 1983
False Easting: 2,500,000.0000
False Northing: 1,200,000.0000
Central Meridian: -114.0000
Scale Factor: 0.9996
Latitude Of Origin: 42.0000
Units: Meter



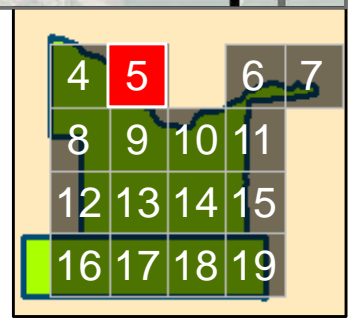
PREPARED BY THE
IDAHO TRANSPORTATION DEPARTMENT
IN COOPERATION WITH THE
U.S. DEPARTMENT OF TRANSPORTATION
FEDERAL HIGHWAY ADMINISTRATION

Legend

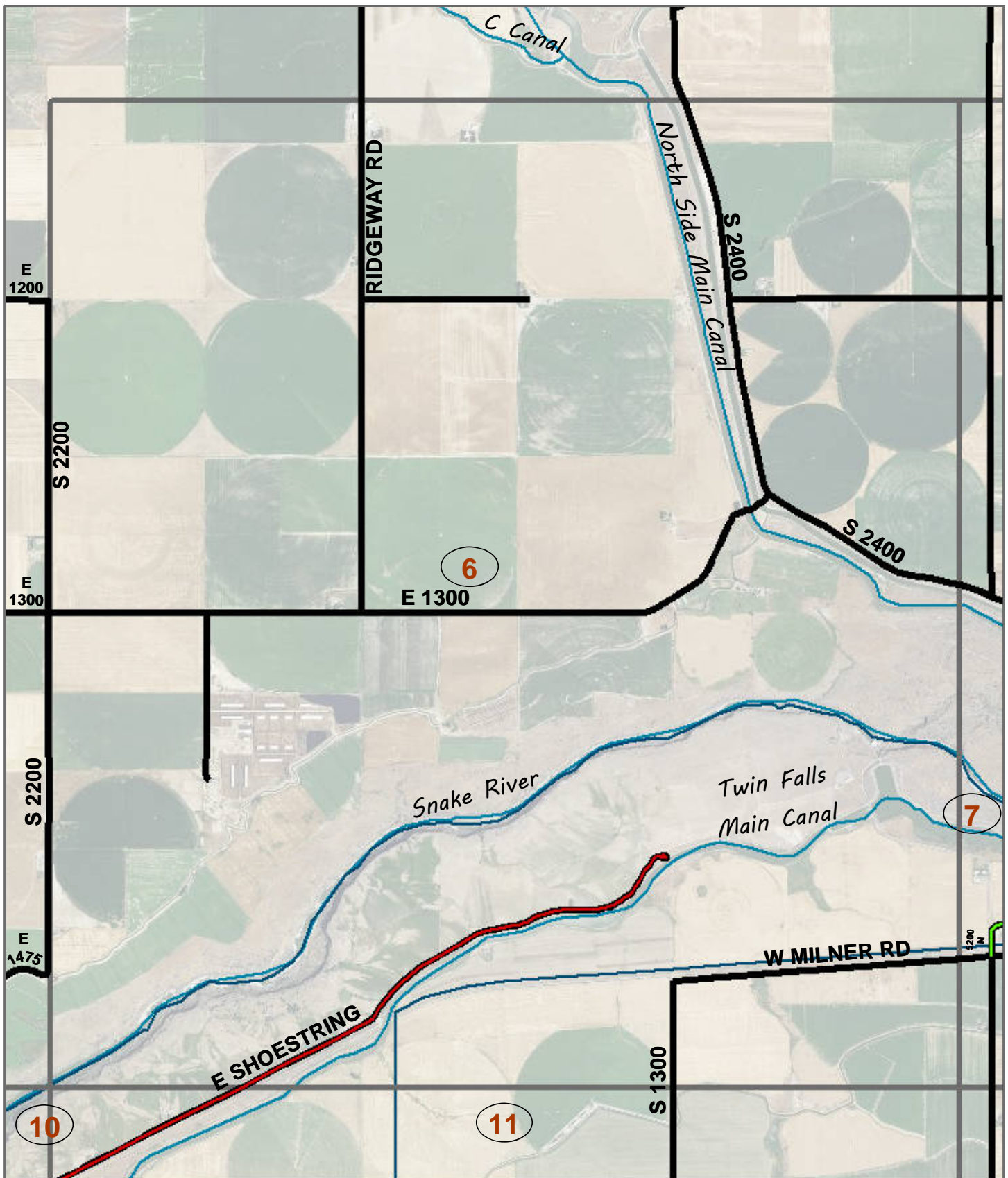
- Summit
- Report
- Interchange
- Bridge
- Island
- W or more thru lanes
- sideMaint.SDELR1_Roads Events
- SURFTYPE**
 - Gravel
 - Asphalt
 - Gravel treated gravel less than 1"
 - Gravel or Cold Plant mix Asphalt
 - Hot mix asphalt pavement
 - Other (e.g., concrete, cobble stone or brick surface)
- 1/2 Jurisdiction

ROAD STATUS

- Improved Road
- Proposed
- Map Sheets
- Current
- Future
- Reserving
- Others and Streams



MURTAUGH HD



2015 ROAD SURFACE MAP
 0 0.25 0.5 1 Miles

**MURTAUGH
 HIGHWAY DISTRICT
 TWIN FALLS COUNTY
 CASSIA COUNTY
 IDAHO**

The Idaho Transportation Department (ITD) provides this information, including geographic data and any associated metadata "as is" without warranty of any kind, including but not limited to its completeness, fitness for a particular use, or accuracy of content, positional or otherwise. It is the sole responsibility of the user to determine the accuracy or usability of any information, data or metadata for his or her own purposes. In no event shall ITD have any liability whatsoever for damages of any kind arising out of the use of or reliance on the information, geographic data or metadata. In providing this information, data, metadata, or access to such, ITD assumes no obligation to assist the user in the use of such or in the development, use, or maintenance of any applications applied to or associated with such.

Date: 10/8/2015

Local Road System Revised October 01, 2015

Path: W:\LocalRds\RdSurface\RIMAPS\TwinFallsCounty\MurtaughHdMapBookRdsOnly\MurtaughHdMapBookCom.mxd

Scale: 1:26,985
 Coordinate System: NAD 1983 Idaho TM
 Projection: Transverse Mercator
 Datum: North American 1983
 False Easting: 2,500,000.0000
 False Northing: 1,200,000.0000
 Central Meridian: -114.0000
 Scale Factor: 0.9996
 Latitude Of Origin: 42.0000
 Units: Meter



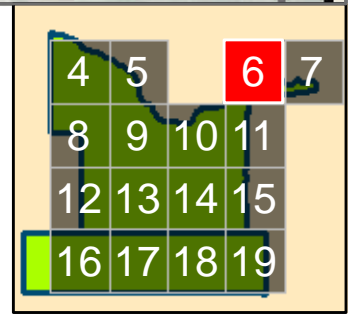
PREPARED BY THE
 IDAHO TRANSPORTATION DEPARTMENT
 IN COOPERATION WITH THE
 U.S. DEPARTMENT OF TRANSPORTATION
 FEDERAL HIGHWAY ADMINISTRATION

Legend

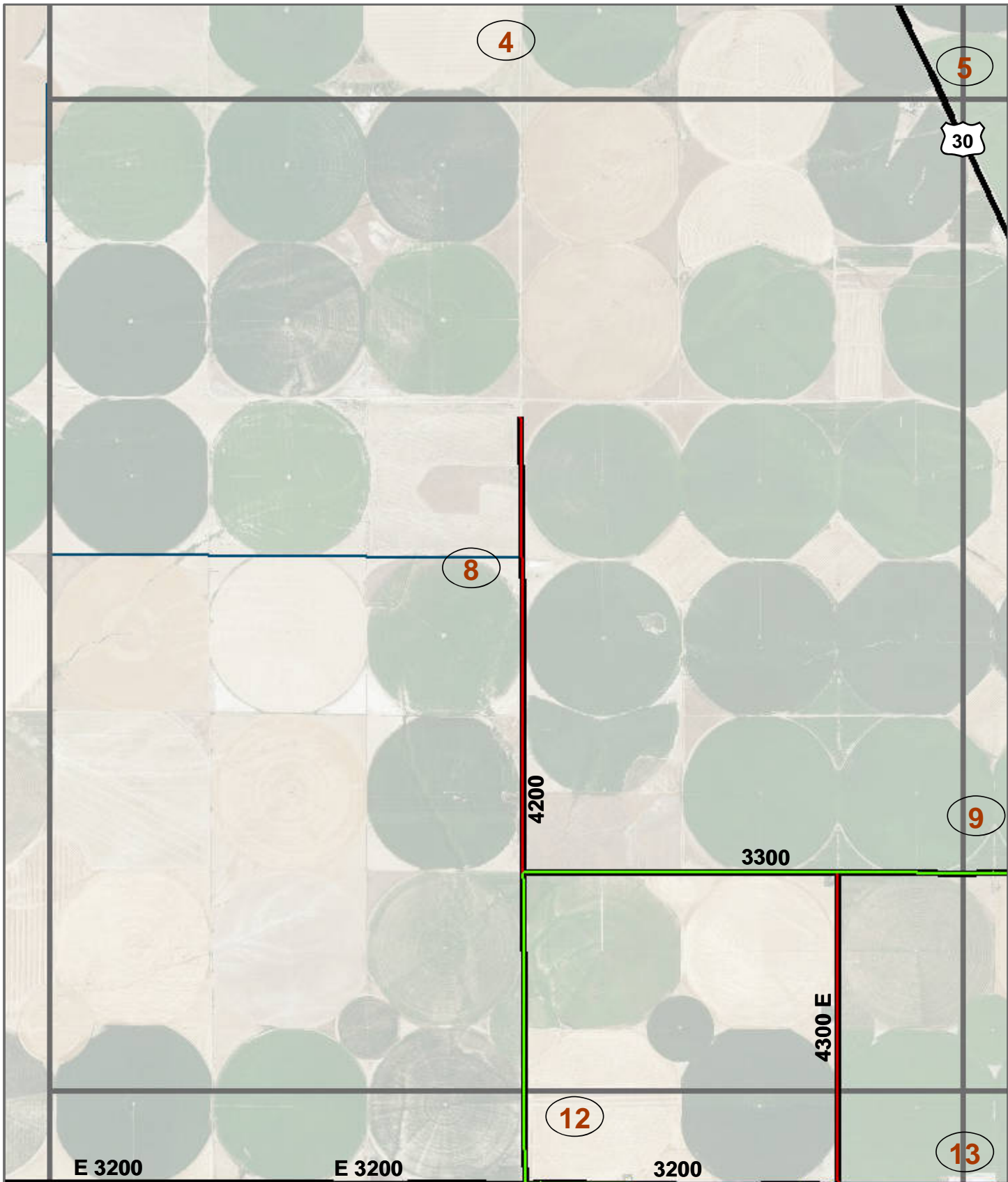
- Mountain Peak
- Summit
- Port
- Boundary
- Range
- Island
- sideMaint.SDELR1_Roads Events
- SURFTYPE**
 - GRAVEL
 - Asphalt treated gravel less than 1"
 - Hot or Cold Plant mix Asphalt
 - Hot mix asphalt pavement
 - Other (e.g., concrete, cobble stone or brick surface)
- 1/2 Jurisdiction

ROAD STATUS

- Improved Road
- Proposed
- Map Sheets
- Construction
- Access, Resurfacing
- Highways and Streams



MURTAUGH HD



2015 ROAD SURFACE MAP 0 0.25 0.5 1 Miles

**MURTAUGH
HIGHWAY DISTRICT
TWIN FALLS COUNTY
CASSIA COUNTY
IDAHO**

The Idaho Transportation Department (ITD) provides this information, including geographic data and any associated metadata "as is" without warranty of any kind, including but not limited to its completeness, fitness for a particular use, or accuracy of content, positional or otherwise. It is the sole responsibility of the user to determine the accuracy or usability of any information, data or metadata for his or her own purposes. In no event shall ITD have any liability whatsoever for damages of any kind arising out of the use of or reliance on the information, geographic data or metadata. In providing this information, data, metadata, or access to such, ITD assumes no obligation to assist the user in the use of such or in the development, use, or maintenance of any applications applied to or associated with such.

Date: 10/8/2015

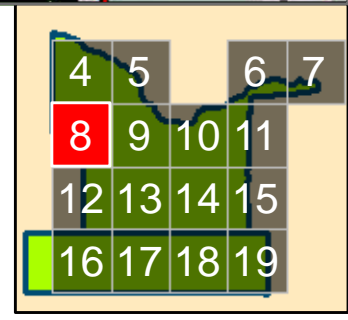
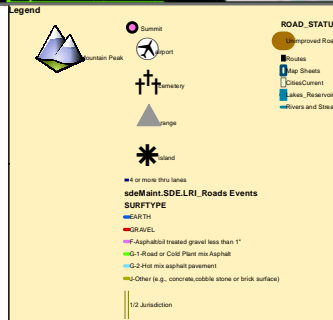
Local Road System Revised October 01, 2015

Path: W:\LocalRds\RdSurface\RIMAPS\TwinFallsCounty\MurtaughHdMapBookRdsOnly\MurtaughHdMapBookCom.mxd

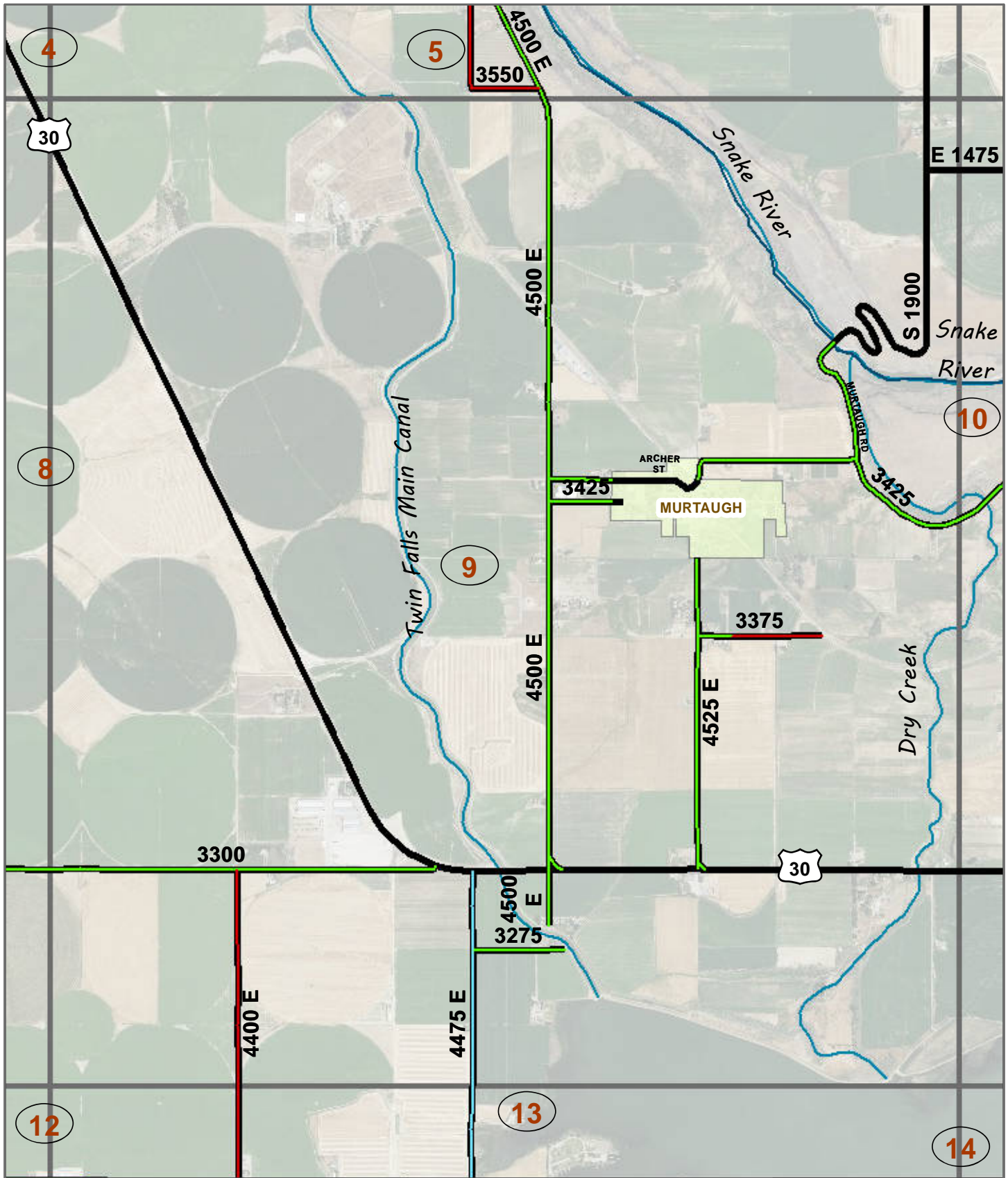
Scale: 1:26,985
Coordinate System: NAD 1983 Idaho TM
Projection: Transverse Mercator
Datum: North American 1983
False Easting: 2,500,000.0000
False Northing: 1,200,000.0000
Central Meridian: -114.0000
Scale Factor: 0.9996
Latitude Of Origin: 42.0000
Units: Meter



PREPARED BY THE
IDAHO TRANSPORTATION DEPARTMENT
IN COOPERATION WITH THE
U.S. DEPARTMENT OF TRANSPORTATION
FEDERAL HIGHWAY ADMINISTRATION



MURTAUGH HD



**MURTAUGH
HIGHWAY DISTRICT
TWIN FALLS COUNTY
CASSIA COUNTY
IDAHO**

The Idaho Transportation Department (ITD) provides this information, including geographic data and any associated metadata "as is" without warranty of any kind, including but not limited to its completeness, fitness for a particular use, or accuracy of content, positional or otherwise. It is the sole responsibility of the user to determine the accuracy or usability of any information, data or metadata for his or her own purposes. In no event shall ITD have any liability whatsoever for damages of any kind arising out of the use of or reliance on the information, geographic data or metadata. In providing this information, data, metadata, or access to such, ITD assumes no obligation to assist the user in the use of such or in the development, use, or maintenance of any applications applied to or associated with such.

Date: 10/8/2015

Local Road System Revised October 01, 2015

Path: W:\LocalRds\RdSurface\RMAPS\TwinFallsCounty\MurtaughHdMapBookRdsOnly\MurtaughHdMapBookCom.mxd

Scale: 1:26,985
Coordinate System: NAD 1983 Idaho TM
Projection: Transverse Mercator
Datum: North American 1983
False Easting: 2,500,000.0000
False Northing: 1,200,000.0000
Central Meridian: -114.0000
Scale Factor: 0.9996
Latitude Of Origin: 42.0000
Units: Meter



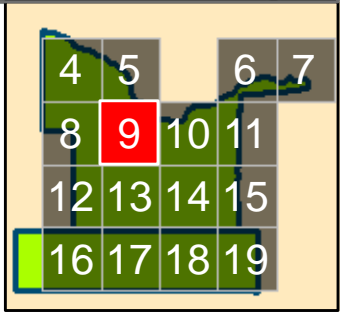
PREPARED BY THE
IDAHO TRANSPORTATION DEPARTMENT
IN COOPERATION WITH THE
U.S. DEPARTMENT OF TRANSPORTATION
FEDERAL HIGHWAY ADMINISTRATION

Legend

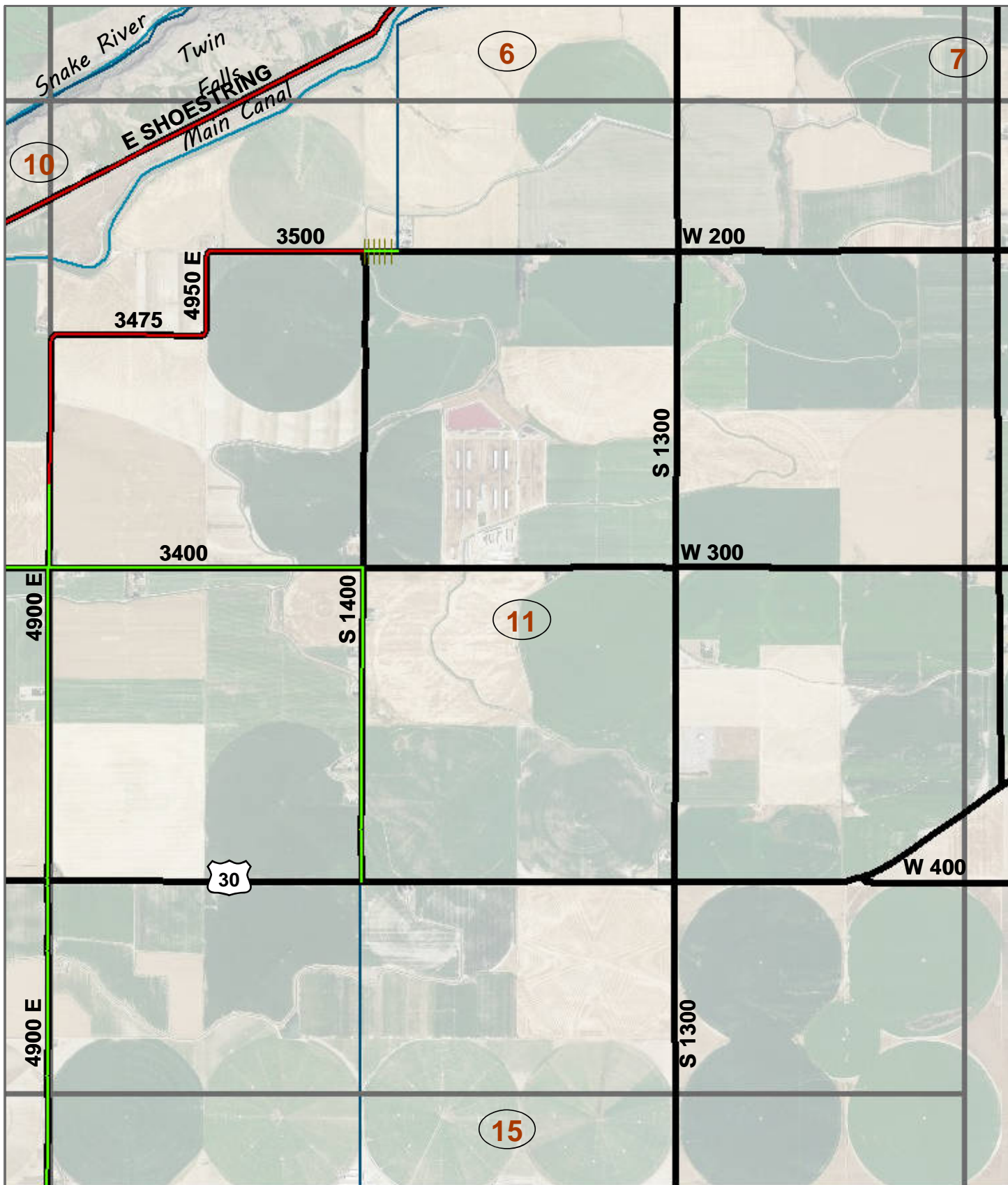
- Summit
- Report
- Interchange
- Range
- Island
- W or more thru lanes
- sideMaint.SDELR1_Roads Events
- SURFTYPE**
 - Gravel
 - Asphalt
 - Gravel or Cold Plant mix Asphalt
 - Hot mix asphalt pavement
 - Other (e.g., concrete, cobble stone or brick surface)
- 1/2 Jurisdiction

ROAD STATUS

- Improved Road
- Proposed
- Map Sheets
- Construction
- Access, Resurfacing
- Highways and Streets



MURTAUGH HD



2015 ROAD SURFACE MAP 0 0.25 0.5 1 Miles

**MURTAUGH
HIGHWAY DISTRICT
TWIN FALLS COUNTY
CASSIA COUNTY
IDAHO**

The Idaho Transportation Department (ITD) provides this information, including geographic data and any associated metadata "as is" without warranty of any kind, including but not limited to its completeness, fitness for a particular use, or accuracy of content, positional or otherwise. It is the sole responsibility of the user to determine the accuracy or usability of any information, data or metadata for his or her own purposes. In no event shall ITD have any liability whatsoever for damages of any kind arising out of the use of or reliance on the information, geographic data or metadata. In providing this information, data, metadata, or access to such, ITD assumes no obligation to assist the user in the use of such or in the development, use, or maintenance of any applications applied to or associated with such.

Date: 10/8/2015

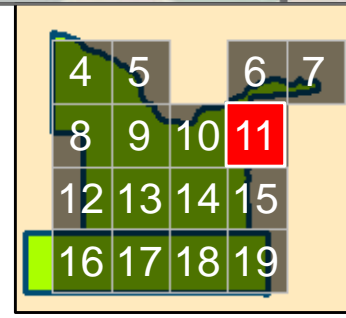
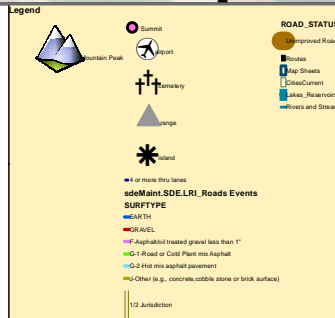
Local Road System Revised October 01, 2015

Path: W:\LocalRds\RdSurface\RIMAPS\TwinFallsCounty\MurtaughHdMapBookRdsOnly\MurtaughHdMapBookCom.mxd

Scale: 1:26,985
Coordinate System: NAD 1983 Idaho TM
Projection: Transverse Mercator
Datum: North American 1983
False Easting: 2,500,000.0000
False Northing: 1,200,000.0000
Central Meridian: -114.0000
Scale Factor: 0.9996
Latitude Of Origin: 42.0000
Units: Meter

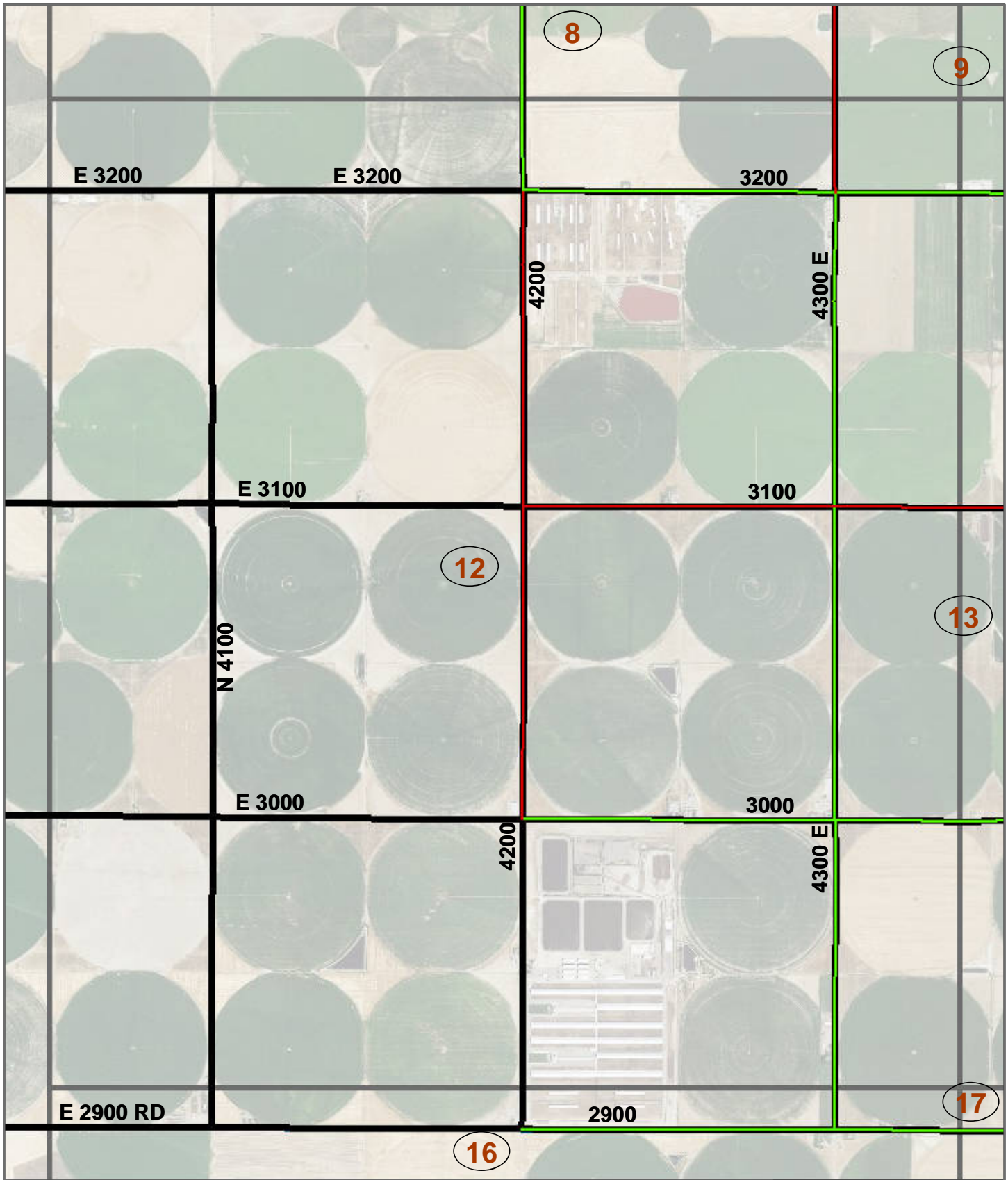


PREPARED BY THE
IDAHO TRANSPORTATION DEPARTMENT
IN COOPERATION WITH THE
U.S. DEPARTMENT OF TRANSPORTATION
FEDERAL HIGHWAY ADMINISTRATION



MURTAUGH HD

11



**MURTAUGH
HIGHWAY DISTRICT
TWIN FALLS COUNTY
CASSIA COUNTY
IDAHO**

The Idaho Transportation Department (ITD) provides this information, including geographic data and any associated metadata "as is" without warranty of any kind, including but not limited to its completeness, fitness for a particular use, or accuracy of content, positional or otherwise. It is the sole responsibility of the user to determine the accuracy or usability of any information, data or metadata for his or her own purposes. In no event shall ITD have any liability whatsoever for damages of any kind arising out of the use of or reliance on the information, geographic data or metadata. In providing this information, data, metadata, or access to such, ITD assumes no obligation to assist the user in the use of such or in the development, use, or maintenance of any applications applied to or associated with such.

Date: 10/8/2015

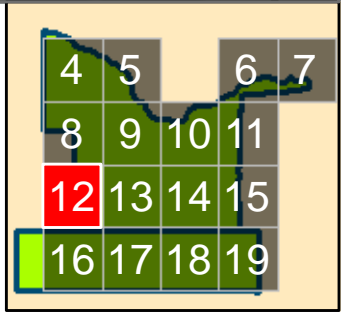
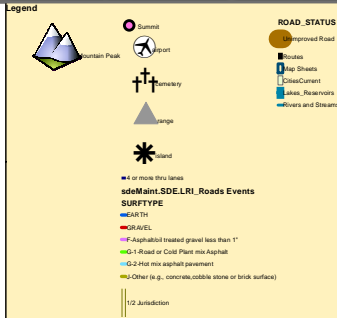
Local Road System Revised October 01, 2015

Path: W:\LocalRds\RdSurface\RIMAPS\TwinFallsCounty\MurtaughHdMapBookRdsOnly\MurtaughHdMapBookCom.mxd

Scale: 1:26,985
Coordinate System: NAD 1983 Idaho TM
Projection: Transverse Mercator
Datum: North American 1983
False Easting: 2,500,000.0000
False Northing: 1,200,000.0000
Central Meridian: -114.0000
Scale Factor: 0.9996
Latitude Of Origin: 42.0000
Units: Meter

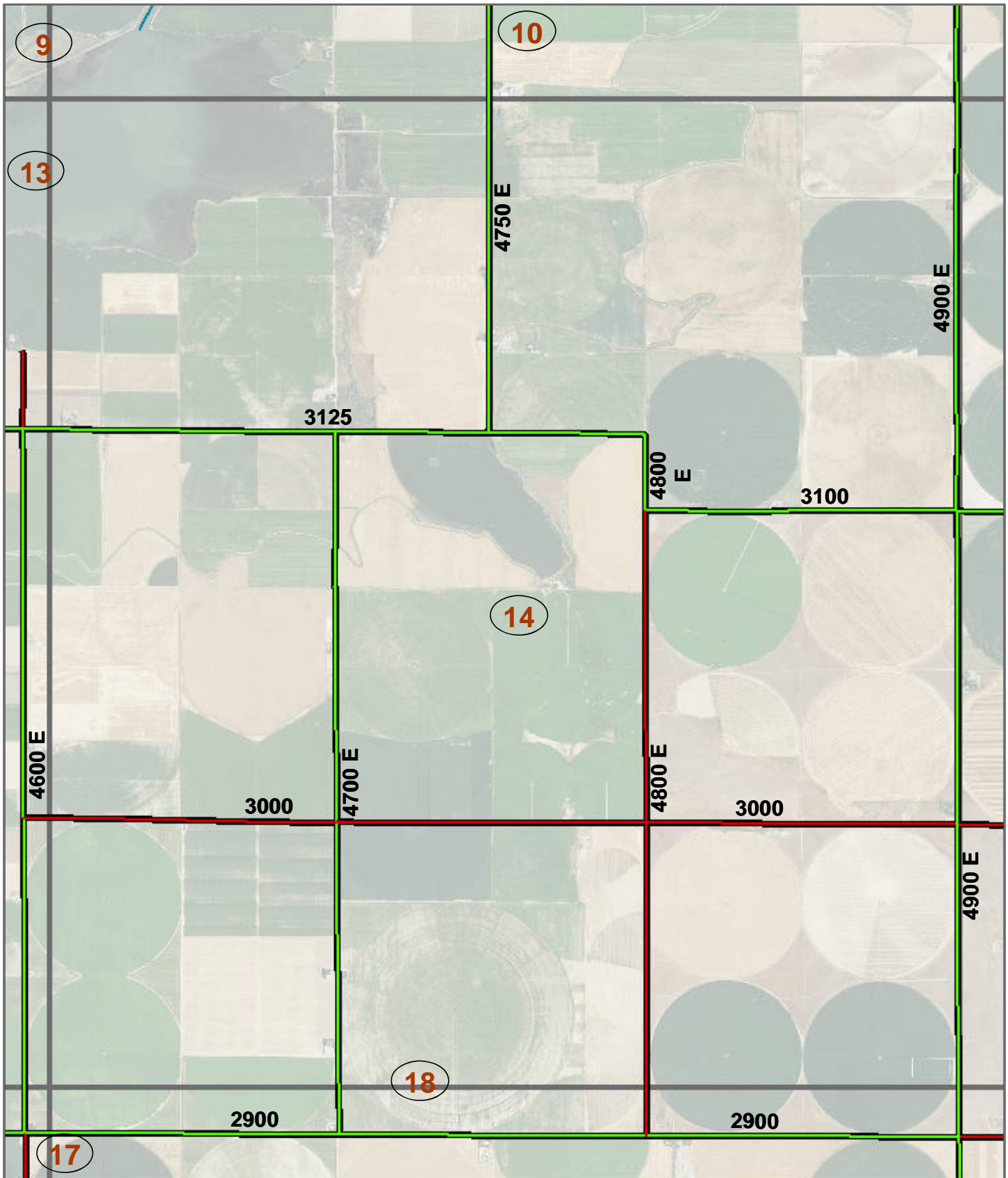


PREPARED BY THE
IDAHO TRANSPORTATION DEPARTMENT
IN COOPERATION WITH THE
U.S. DEPARTMENT OF TRANSPORTATION
FEDERAL HIGHWAY ADMINISTRATION



MURTAUGH HD

12



**MURTAUGH
HIGHWAY DISTRICT
TWIN FALLS COUNTY
CASSIA COUNTY
IDAHO**

The Idaho Transportation Department (ITD) provides this information, including geographic data and any associated metadata "as is" without warranty of any kind, including but not limited to its completeness, fitness for a particular use, or accuracy of content, positional or otherwise. It is the sole responsibility of the user to determine the accuracy or usability of any information, data or metadata for his or her own purposes. In no event shall ITD have any liability whatsoever for damages of any kind arising out of the use of or reliance on the information, geographic data or metadata. In providing this information, data, metadata, or access to such, ITD assumes no obligation to assist the user in the use of such or in the development, use, or maintenance of any applications applied to or associated with such.

Date: 10/8/2015

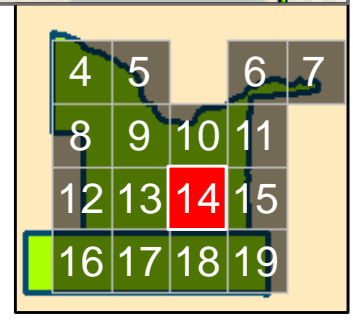
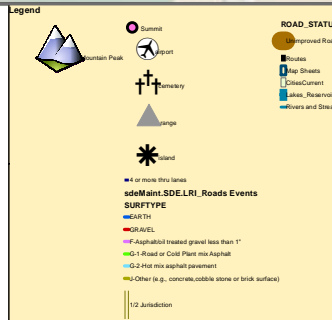
Local Road System Revised October 01, 2015

Path: W:\LocalRds\RdSurface\ELRIMAPS\TwinFallsCounty\MurtaughHdMapBookRdsOnly\MurtaughHdMapBookCom.mxd

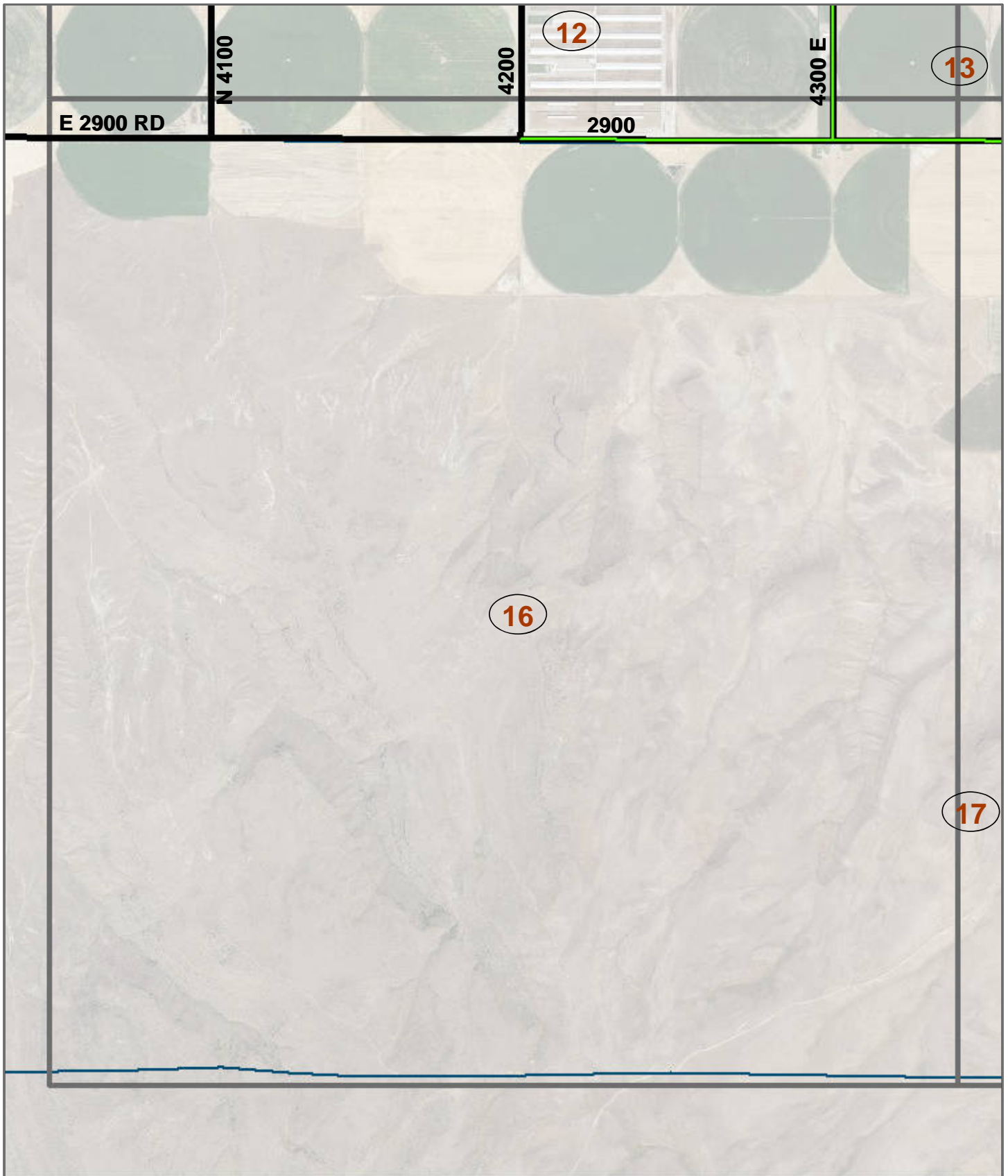
Scale: 1:26,985
Coordinate System: NAD 1983 Idaho TM
Projection: Transverse Mercator
Datum: North American 1983
False Easting: 2,500,000.0000
False Northing: 1,200,000.0000
Central Meridian: -114.0000
Scale Factor: 0.9996
Latitude Of Origin: 42.0000
Units: Meter



PREPARED BY THE
IDAHO TRANSPORTATION DEPARTMENT
IN COOPERATION WITH THE
U.S. DEPARTMENT OF TRANSPORTATION
FEDERAL HIGHWAY ADMINISTRATION



MURTAUGH HD



2015 ROAD SURFACE MAP 0 0.25 0.5 1 Miles

**MURTAUGH
HIGHWAY DISTRICT
TWIN FALLS COUNTY
CASSIA COUNTY
IDAHO**

The Idaho Transportation Department (ITD) provides this information, including geographic data and any associated metadata "as is" without warranty of any kind, including but not limited to its completeness, fitness for a particular use, or accuracy of content, positional or otherwise. It is the sole responsibility of the user to determine the accuracy or usability of any information, data or metadata for his or her own purposes. In no event shall ITD have any liability whatsoever for damages of any kind arising out of the use of or reliance on the information, geographic data or metadata. In providing this information, data, metadata, or access to such, ITD assumes no obligation to assist the user in the use of such or in the development, use, or maintenance of any applications applied to or associated with such.

Date: 10/8/2015

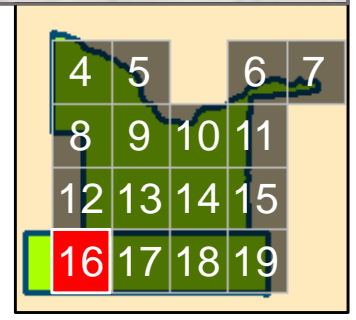
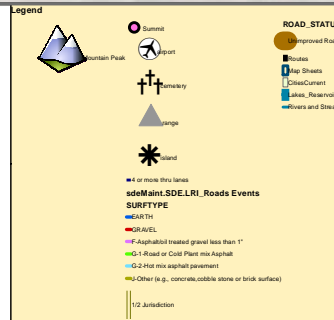
Local Road System Revised October 01, 2015

Path: W:\LocalRds\RdSurface\ELRIMAPS\TwinFallsCounty\MurtaughHdMapBookRdsOnly\MurtaughHdMapBookCom.mxd

Scale: 1:26,985
Coordinate System: NAD 1983 Idaho TM
Projection: Transverse Mercator
Datum: North American 1983
False Easting: 2,500,000.0000
False Northing: 1,200,000.0000
Central Meridian: -114.0000
Scale Factor: 0.9996
Latitude Of Origin: 42.0000
Units: Meter

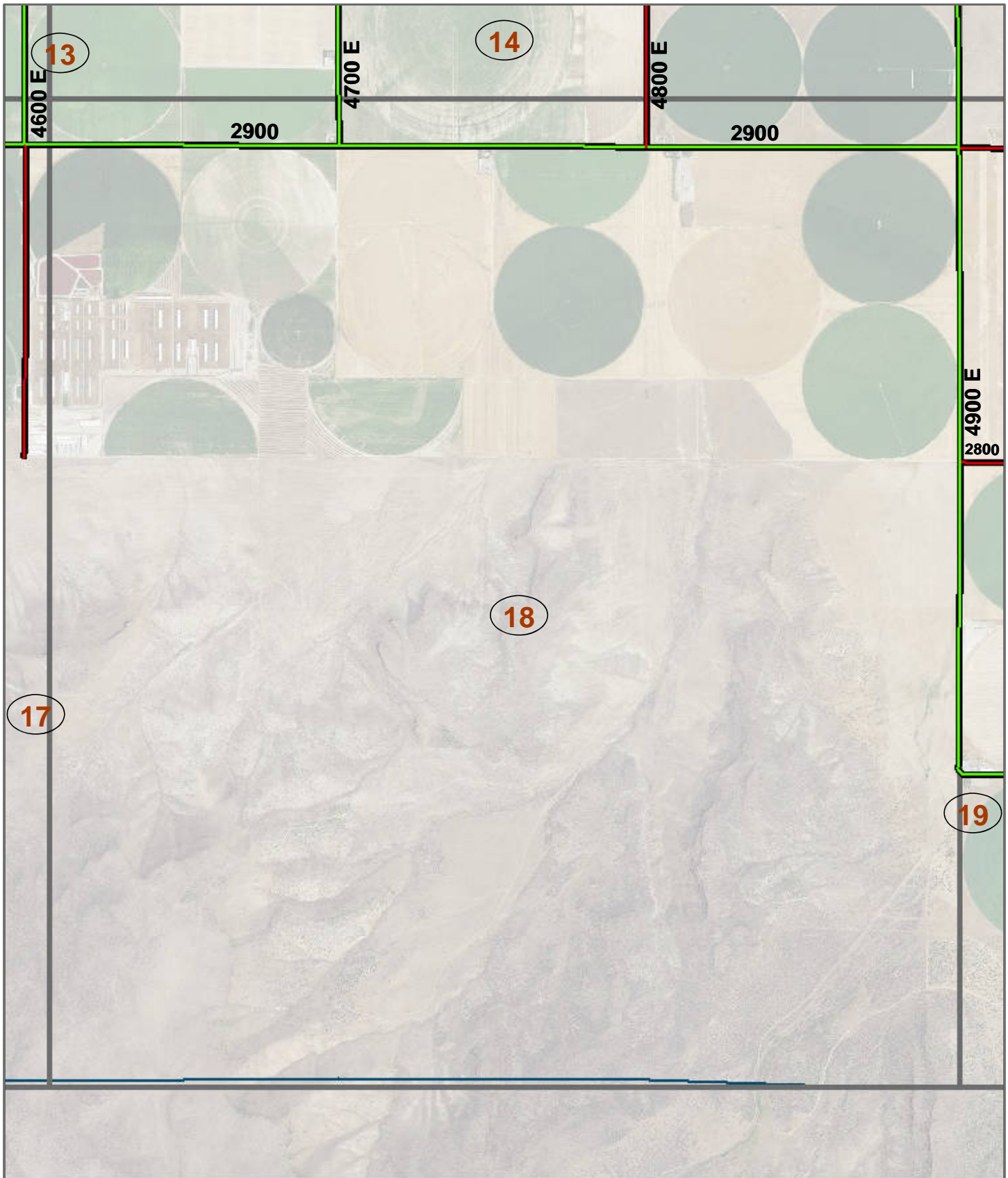


PREPARED BY THE
IDAHO TRANSPORTATION DEPARTMENT
IN COOPERATION WITH THE
U.S. DEPARTMENT OF TRANSPORTATION
FEDERAL HIGHWAY ADMINISTRATION



MURTAUGH HD

16



2015 ROAD SURFACE MAP 0 0.25 0.5 1 Miles

**MURTAUGH
HIGHWAY DISTRICT
TWIN FALLS COUNTY
CASSIA COUNTY
IDAHO**

The Idaho Transportation Department (ITD) provides this information, including geographic data and any associated metadata "as is" without warranty of any kind, including but not limited to its completeness, fitness for a particular use, or accuracy of content, positional or otherwise. It is the sole responsibility of the user to determine the accuracy or usability of any information, data or metadata for his or her own purposes. In no event shall ITD have any liability whatsoever for damages of any kind arising out of the use of or reliance on the information, geographic data or metadata. In providing this information, data, metadata, or access to such, ITD assumes no obligation to assist the user in the use of such or in the development, use, or maintenance of any applications applied to or associated with such.

Date: 10/8/2015

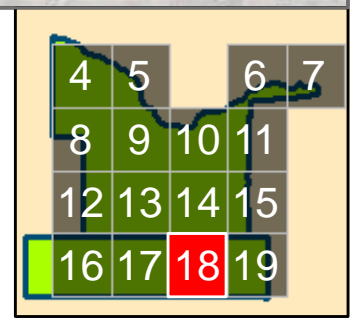
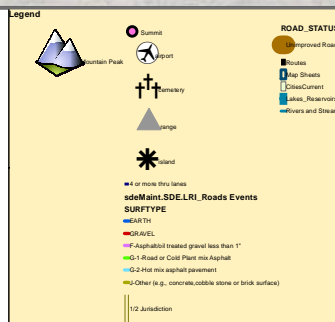
Local Road System Revised October 01, 2015

Path: W:\LocalRds\RdSurface\RIMAPS\TwinFallsCounty\MurtaughHdMapBookRdsOnly\MurtaughHdMapBookCom.mxd

Scale: 1:26,985
Coordinate System: NAD 1983 Idaho TM
Projection: Transverse Mercator
Datum: North American 1983
False Easting: 2,500,000.0000
False Northing: 1,200,000.0000
Central Meridian: -114.0000
Scale Factor: 0.9996
Latitude Of Origin: 42.0000
Units: Meter

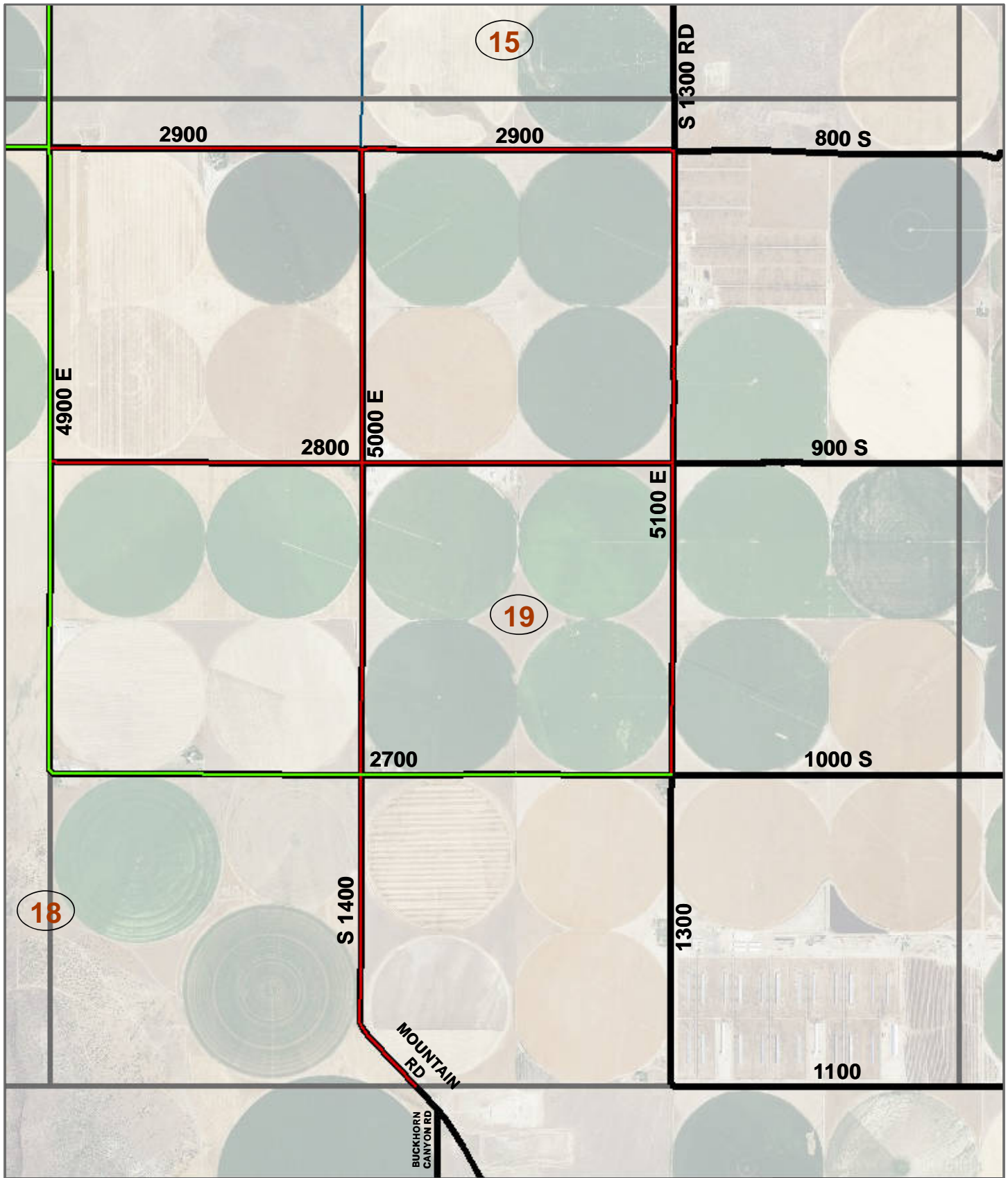


PREPARED BY THE
IDAHO TRANSPORTATION DEPARTMENT
IN COOPERATION WITH THE
U.S. DEPARTMENT OF TRANSPORTATION
FEDERAL HIGHWAY ADMINISTRATION



MURTAUGH HD

18



**MURTAUGH
HIGHWAY DISTRICT
TWIN FALLS COUNTY
CASSIA COUNTY
IDAHO**

The Idaho Transportation Department (ITD) provides this information, including geographic data and any associated metadata "as is" without warranty of any kind, including but not limited to its completeness, fitness for a particular use, or accuracy of content, positional or otherwise. It is the sole responsibility of the user to determine the accuracy or usability of any information, data or metadata for his or her own purposes. In no event shall ITD have any liability whatsoever for damages of any kind arising out of the use of or reliance on the information, geographic data or metadata. In providing this information, data, metadata, or access to such, ITD assumes no obligation to assist the user in the use of such or in the development, use, or maintenance of any applications applied to or associated with such.

Date: 10/8/2015

Local Road System Revised October 01, 2015

Path: W:\LocalRds\RdSurface\RIMAPS\TwinFallsCounty\MurtaughHdMapBookRdsOnly\MurtaughHdMapBookCom.mxd

Scale: 1:26,985
Coordinate System: NAD 1983 Idaho TM
Projection: Transverse Mercator
Datum: North American 1983
False Easting: 2,500,000.0000
False Northing: 1,200,000.0000
Central Meridian: -114.0000
Scale Factor: 0.9996
Latitude Of Origin: 42.0000
Units: Meter



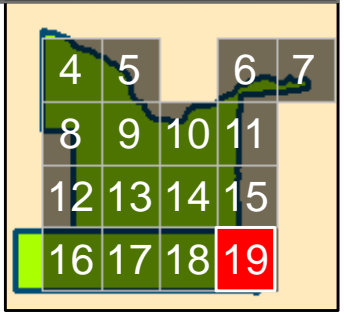
PREPARED BY THE
IDAHO TRANSPORTATION DEPARTMENT
IN COOPERATION WITH THE
U.S. DEPARTMENT OF TRANSPORTATION
FEDERAL HIGHWAY ADMINISTRATION

Legend

- Summit
- Mountain Peak
- Airport
- Interchange
- Bridge
- Island
- W or more thru lanes
- sideMaint.SDE.LRI_Roads Events
- SURFTYPE**
 - Gravel
 - Asphalt
 - Asphalt treated gravel less than 1"
 - Hot mix asphalt
 - Cold Plant mix Asphalt
 - Hot mix asphalt pavement
 - Other (e.g., concrete, cobble stone or brick surface)
- 1/2 Jurisdiction

ROAD STATUS

- Improved Road
- Proposed
- Map Sheets
- Construction
- Access, Resurfacing
- Highways and Streams



MURTAUGH HD