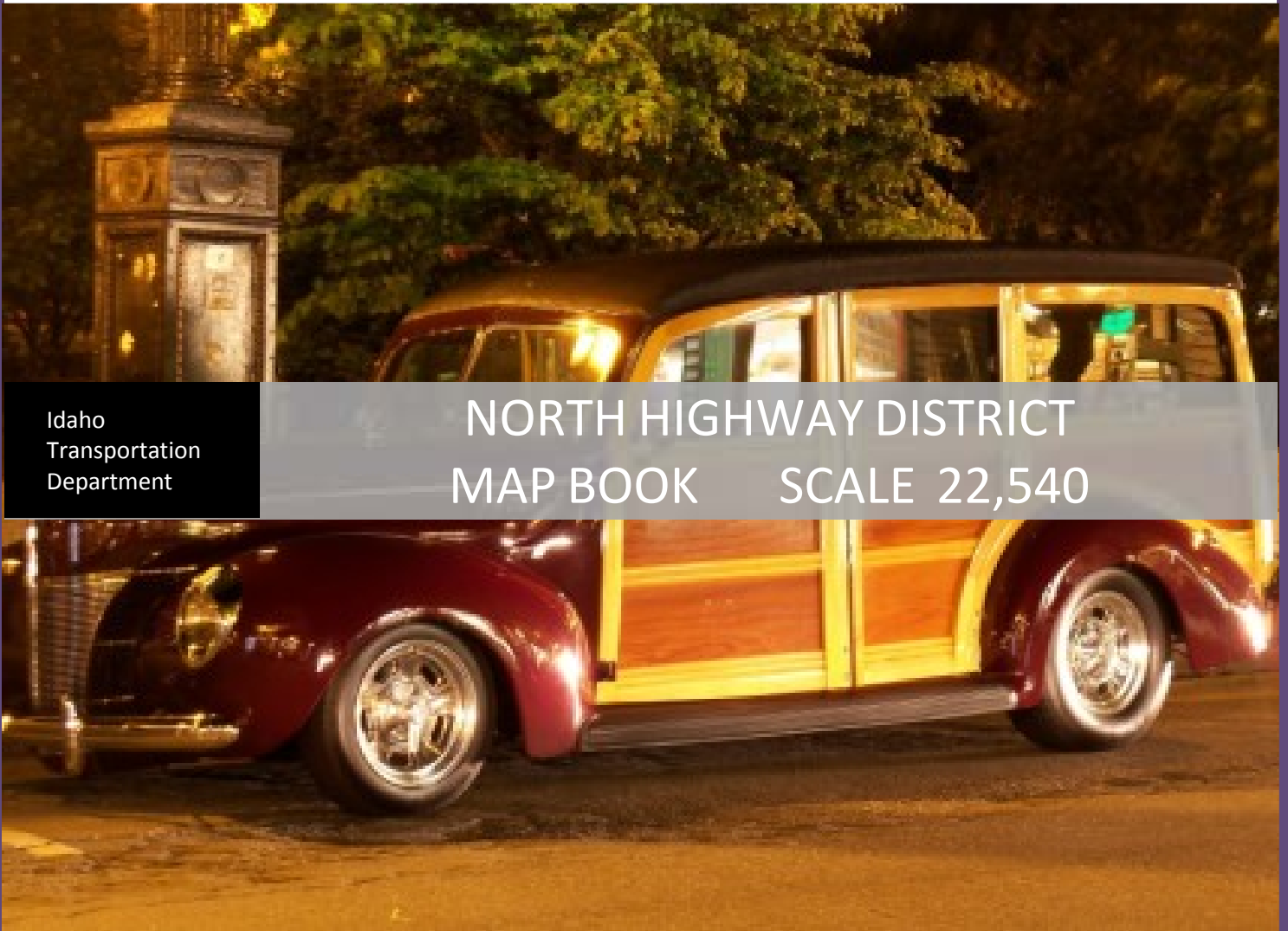


2/12/2016

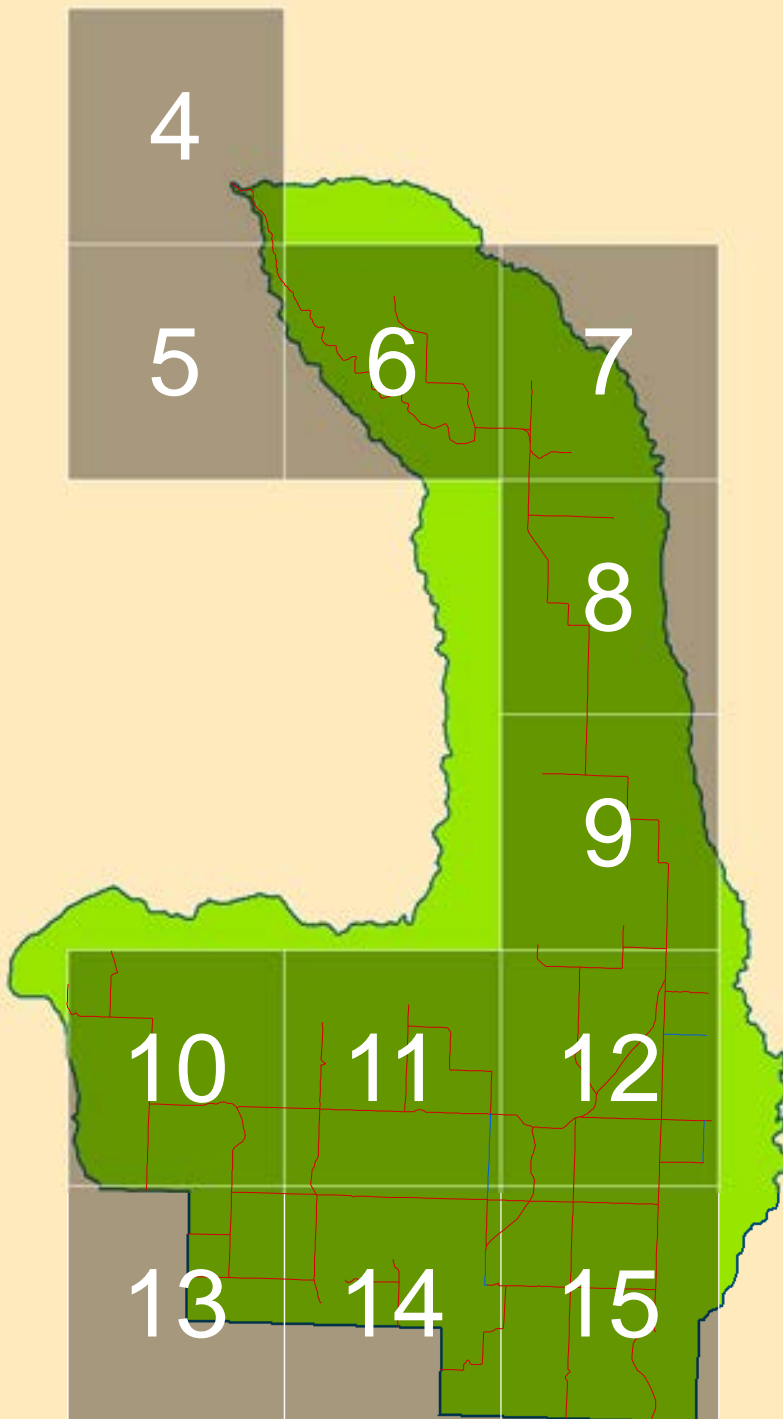


Idaho
Transportation
Department

NORTH HIGHWAY DISTRICT MAP BOOK SCALE 22,540



PREPARED BY THE Idaho Transportation Department | jhill





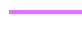





**NORTH
HIGHWAY DISTRICT
LOCATOR GRID
MAP BOOK
PAGE NUMBERS**




Legend

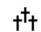












LRI - Road Pay Weight

PayWeight

-  0.5
-  2
-  Earth
-  Gravel
-  F-Asphalt/oil treated gravel less than 1"
-  G-1-Road or Cold Plant mix Asphalt
-  G-2-Hot mix asphalt pavement
-  J-Other (e.g., concrete, cobble stone or brick surface)

Status

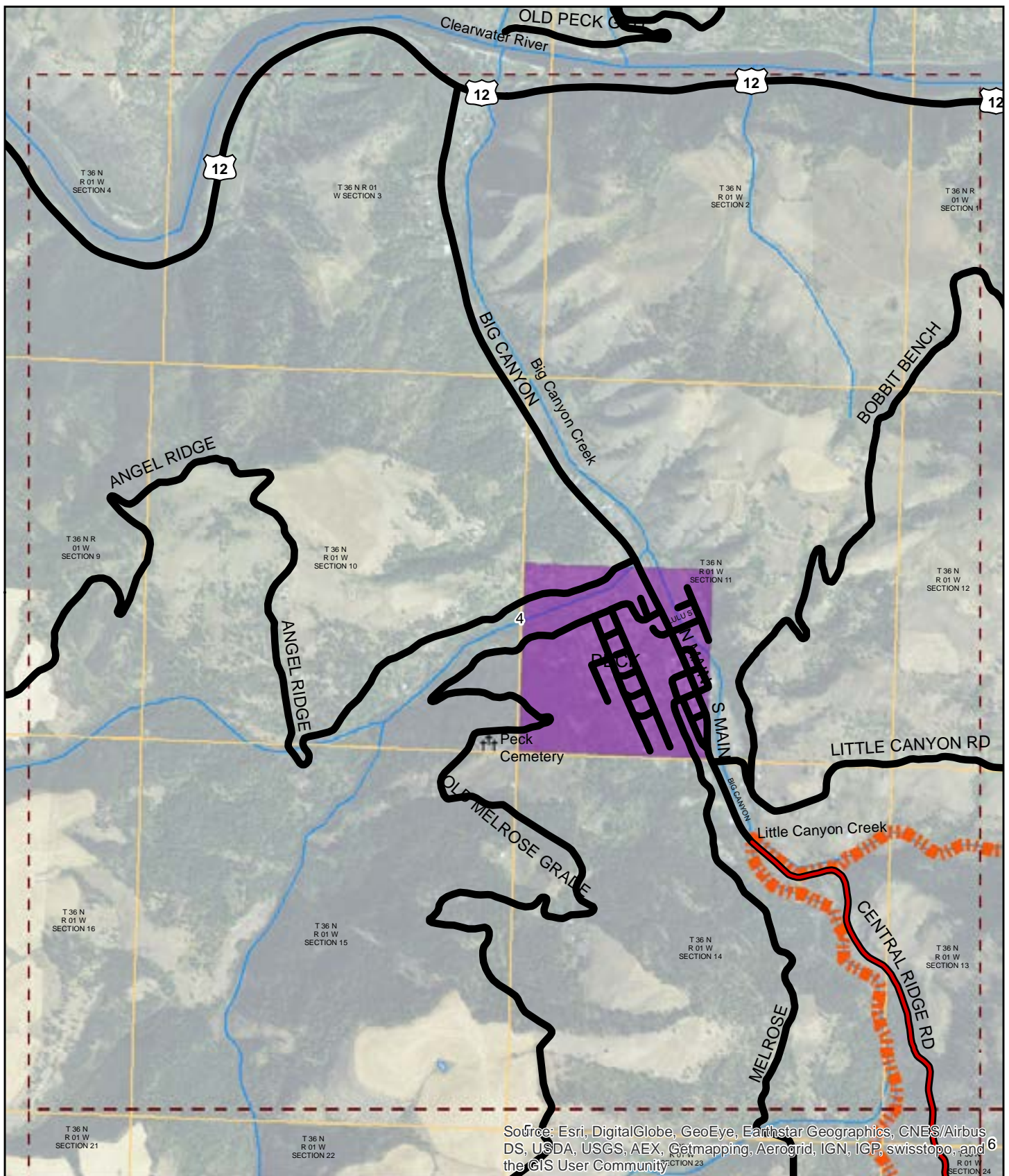
-  UNIMPROVED
-  GNIS - Summit/Peak
-  airport

-  cemetery
-  range
-  island
-  MapGrids
-  HighwayDistrict
-  State
-  County
-  City
-  Section
-  Waterbody
-  River
-  USFS LANDS
-  LRS - Routes

Coordinate System: NAD 1983 Idaho TM
Projection: Transverse Mercator
Datum: North American 1983
False Easting: 2,500,000.0000
False Northing: 1,200,000.0000
Central Meridian: -114.0000
Scale Factor: 0.9996
Latitude Of Origin: 42.0000
Units: Meter

PREPARED BY THE
IDAHO TRANSPORTATION DEPARTMENT
IN COOPERATION WITH THE
U.S. DEPARTMENT OF TRANSPORTATION
FEDERAL HIGHWAY ADMINISTRATION

The Idaho Transportation Department (ITD) provides this information, including geographic data and any associated metadata "as is" without warranty of any kind, including but not limited to its completeness, fitness for a particular use, or accuracy of content, positional or otherwise. It is the sole responsibility of the user to determine the accuracy or usability of any information, data or metadata for his or her own purposes. In no event shall ITD have any liability whatsoever for damages of any kind arising out of the use of or reliance on the information, geographic data or metadata. In providing this information, data, metadata, or access to such, ITD assumes no obligation to assist the user in the use of such or in the development, use, or maintenance of any applications applied to or associated with such.



ITD MAP DISCLAIMER:

The Idaho Transportation Department (ITD) provides this information, including geographic data and any associated metadata "as is" without warranty of any kind, including but not limited to its completeness, fitness for a particular use, or accuracy of content, positional or otherwise. It is the sole responsibility of the user to determine the accuracy or usability of any information, data or metadata for his, or her, own purposes. In no event shall ITD have any liability whatsoever for damages of any kind arising out of the use of or reliance on the information, geographic data or metadata. In providing this information, data, metadata, or access to such, ITD assumes no obligation to assist the user in the use of such or in the development, use, or maintenance of any applications applied to or associated with such.

2015 ROAD SURFACE MAP

NORTH

HIGHWAY DISTRICT

LEWIS COUNTY, IDAHO

Prepared by the Idaho Transportation Department in cooperation with the U.S. Department of Transportation Federal Highway Administration

Page: 4 of 15

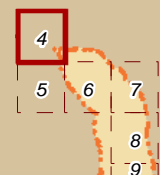
Map Date: 2/12/2016

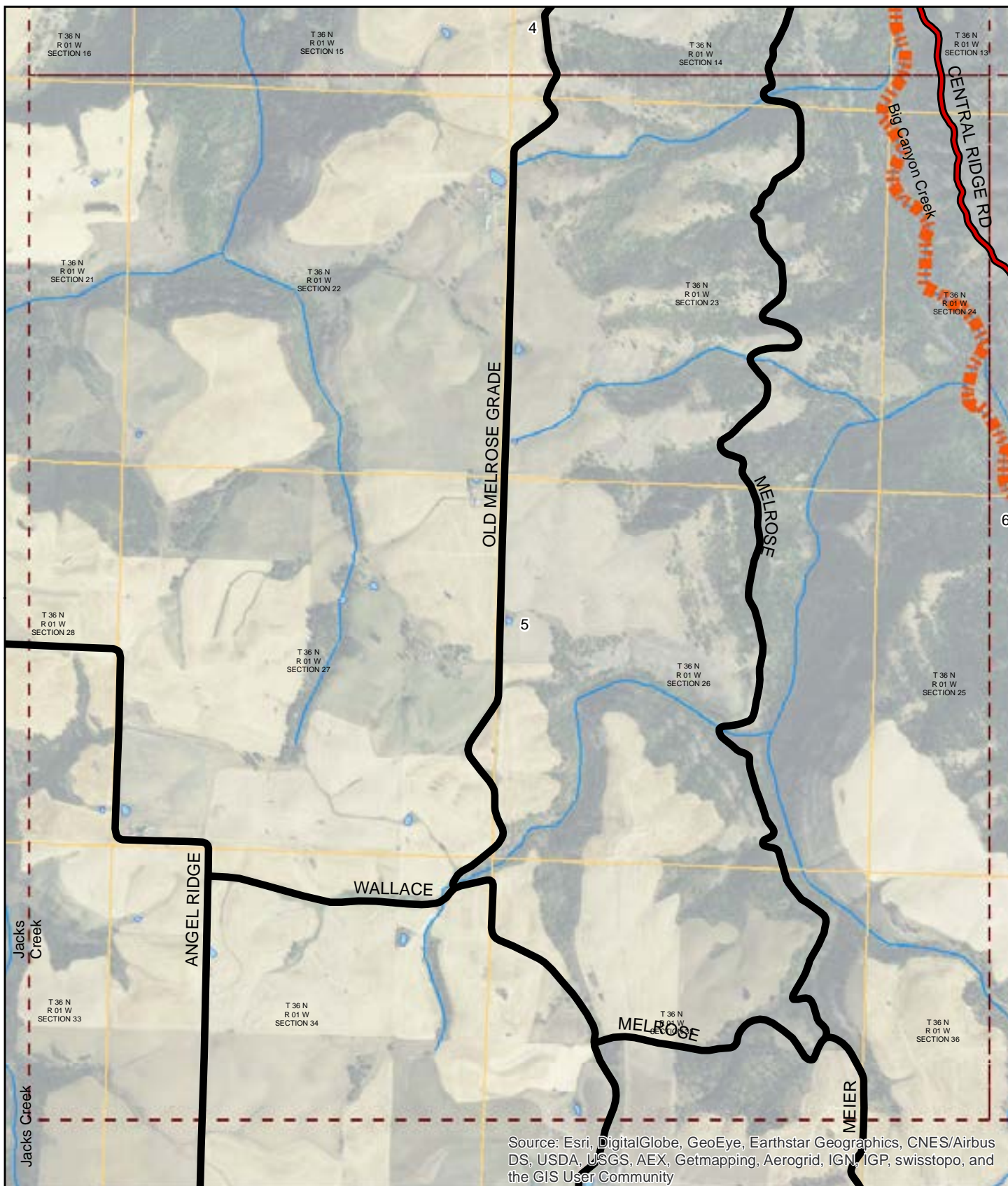
LRI Revised: 10/31/2015



0 0.5 1 miles

Document Path: W:\LocalRds\RoadSurface\Projects\RoadSurface-08.5x11.mxd





ITD MAP DISCLAIMER:

The Idaho Transportation Department (ITD) provides this information, including geographic data and any associated metadata "as is" without warranty of any kind, including but not limited to its completeness, fitness for a particular use, or accuracy of content, positional or otherwise. It is the sole responsibility of the user to determine the accuracy or usability of any information, data or metadata for his, or her, own purposes. In no event shall ITD have any liability whatsoever for damages of any kind arising out of the use of or reliance on the information, geographic data or metadata. In providing this information, data, metadata, or access to such, ITD assumes no obligation to assist the user in the use of such or in the development, use, or maintenance of any applications applied to or associated with such.

Document Path: W:\LocalRds\RoadSurface\Projects\RoadSurface-08.5x11.mxd

2015 ROAD SURFACE MAP

NORTH

HIGHWAY DISTRICT

LEWIS COUNTY, IDAHO

Prepared by the Idaho Transportation Department in cooperation with the U.S. Department of Transportation Federal Highway Administration

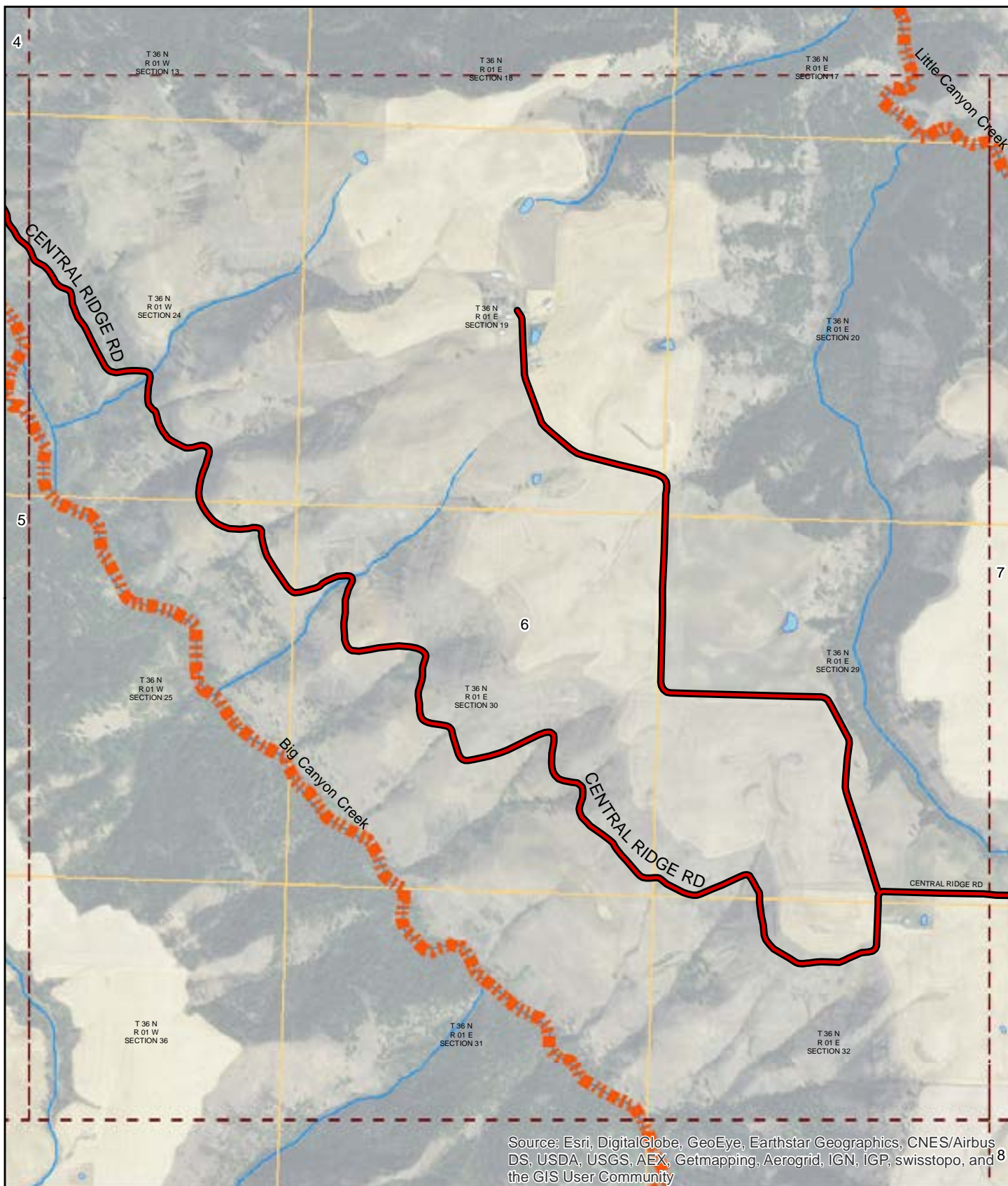
0 0.5 1 miles

Page: 5 of 15

Map Date: 2/12/2016

LRI Revised: 10/31/2015





ITD MAP DISCLAIMER:

The Idaho Transportation Department (ITD) provides this information, including geographic data and any associated metadata "as is" without warranty of any kind, including but not limited to its completeness, fitness for a particular use, or accuracy of content, positional or otherwise. It is the sole responsibility of the user to determine the accuracy or usability of any information, data or metadata for his, or her, own purposes. In no event shall ITD have any liability whatsoever for damages of any kind arising out of the use of or reliance on the information, geographic data or metadata. In providing this information, data, metadata, or access to such, ITD assumes no obligation to assist the user in the use of such or in the development, use, or maintenance of any applications applied to or associated with such.

Document Path: W:\LocalRds\RoadSurface\Projects\RoadSurface-08.5x11.mxd

2015 ROAD SURFACE MAP

NORTH

HIGHWAY DISTRICT

LEWIS COUNTY, IDAHO

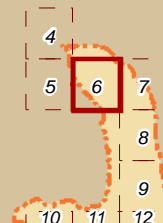
Prepared by the Idaho Transportation Department in cooperation with the U.S. Department of Transportation Federal Highway Administration

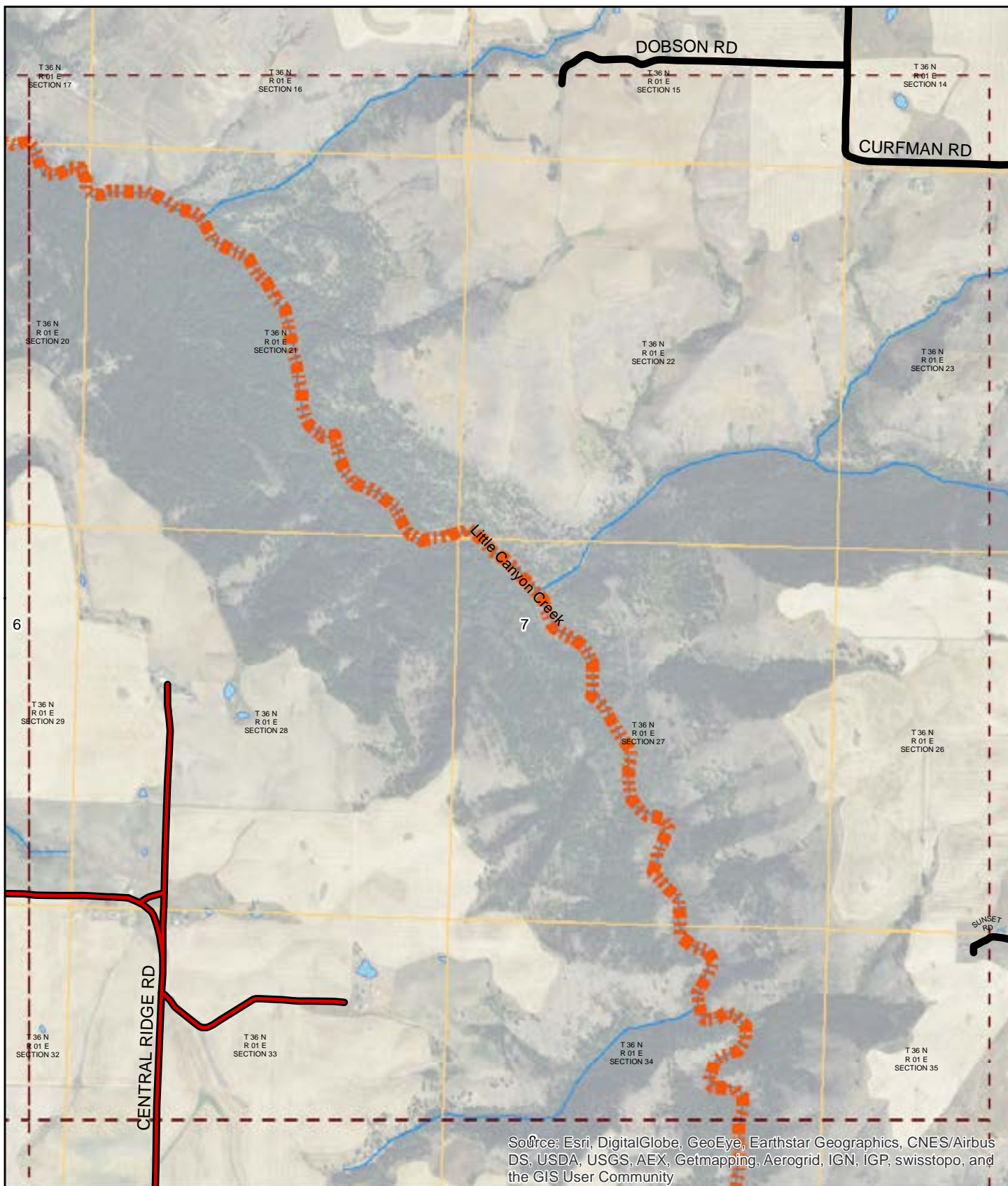
0 0.5 1 miles

Page: 6 of 15

Map Date: 2/12/2016

LRI Revised: 10/31/2015





ITD MAP DISCLAIMER:

The Idaho Transportation Department (ITD) provides this information, including geographic data and any associated metadata "as is" without warranty of any kind, including but not limited to its completeness, fitness for a particular use, or accuracy of content, positional or otherwise. It is the sole responsibility of the user to determine the accuracy or usability of any information, data or metadata for his, or her, own purposes. In no event shall ITD have any liability whatsoever for damages of any kind arising out of the use of or reliance on the information, geographic data or metadata. In providing this information, data, metadata, or access to such, ITD assumes no obligation to assist the user in the use of such or in the development, use, or maintenance of any applications applied to or associated with such.

2015 ROAD SURFACE MAP

NORTH

HIGHWAY DISTRICT

LEWIS COUNTY, IDAHO

Prepared by the Idaho Transportation Department in cooperation with the U.S. Department of Transportation Federal Highway Administration

Page: 7 of 15

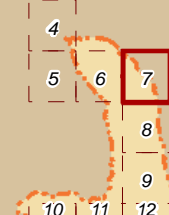
Map Date: 2/12/2016

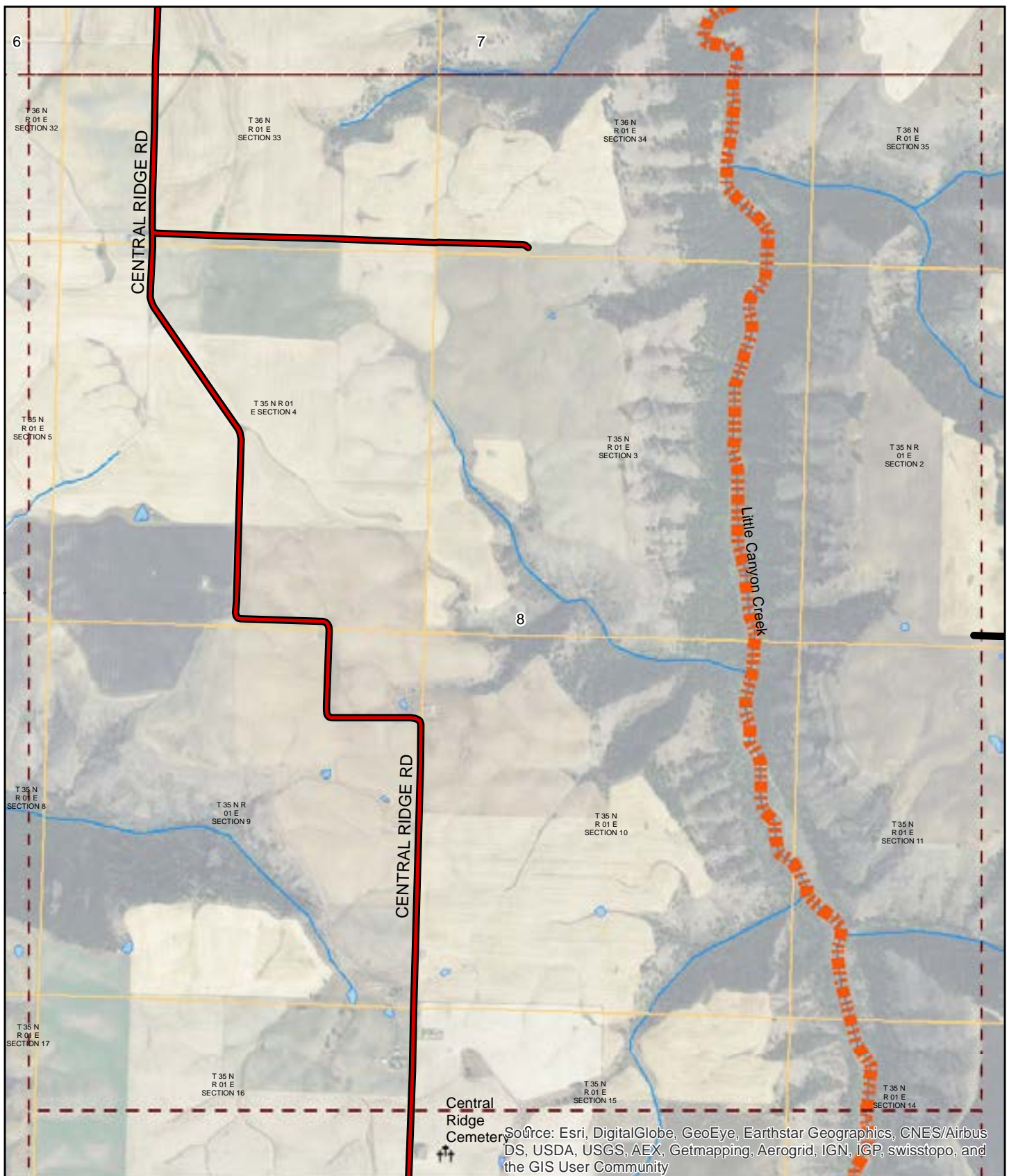
LRI Revised: 10/31/2015



0 0.5 1 miles

Document Path: W:\LocalRds\RoadSurface\Projects\RoadSurface-08.5x11.mxd





ITD MAP DISCLAIMER:

The Idaho Transportation Department (ITD) provides this information, including geographic data and any associated metadata "as is" without warranty of any kind, including but not limited to its completeness, fitness for a particular use, or accuracy of content, positional or otherwise. It is the sole responsibility of the user to determine the accuracy or usability of any information, data or metadata for his, or her, own purposes. In no event shall ITD have any liability whatsoever for damages of any kind arising out of the use of or reliance on the information, geographic data or metadata. In providing this information, data, metadata, or access to such, ITD assumes no obligation to assist the user in the use of such or in the development, use, or maintenance of any applications applied to or associated with such.

Document Path: W:\LocalRds\RoadSurface\Projects\RoadSurface-08.5x11.mxd

2015 ROAD SURFACE MAP

NORTH

HIGHWAY DISTRICT

LEWIS COUNTY, IDAHO

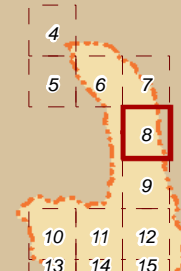
Prepared by the Idaho Transportation Department in cooperation with the U.S. Department of Transportation Federal Highway Administration

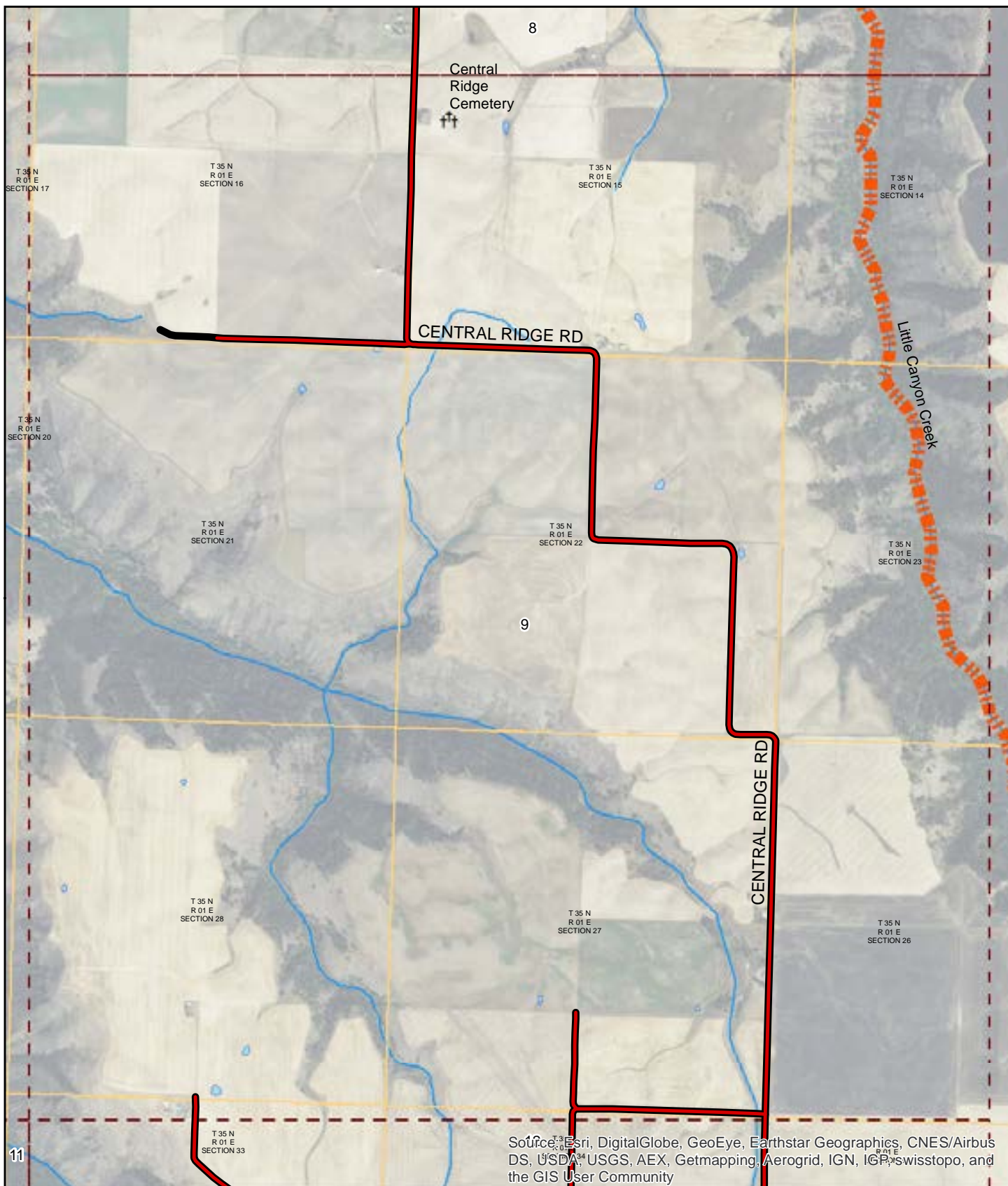
0 0.5 1 miles

Page: 8 of 15

Map Date: 2/12/2016

LRI Revised: 10/31/2015





ITD MAP DISCLAIMER:

The Idaho Transportation Department (ITD) provides this information, including geographic data and any associated metadata "as is" without warranty of any kind, including but not limited to its completeness, fitness for a particular use, or accuracy of content, positional or otherwise. It is the sole responsibility of the user to determine the accuracy or usability of any information, data or metadata for his, or her, own purposes. In no event shall ITD have any liability whatsoever for damages of any kind arising out of the use of or reliance on the information, geographic data or metadata. In providing this information, data, metadata, or access to such, ITD assumes no obligation to assist the user in the use of such or in the development, use, or maintenance of any applications applied to or associated with such.

Document Path: W:\LocalRds\RoadSurface\Projects\RoadSurface-08.5x11.mxd

2015 ROAD SURFACE MAP

NORTH

HIGHWAY DISTRICT

LEWIS COUNTY, IDAHO

Prepared by the Idaho Transportation Department in cooperation with the U.S. Department of Transportation Federal Highway Administration

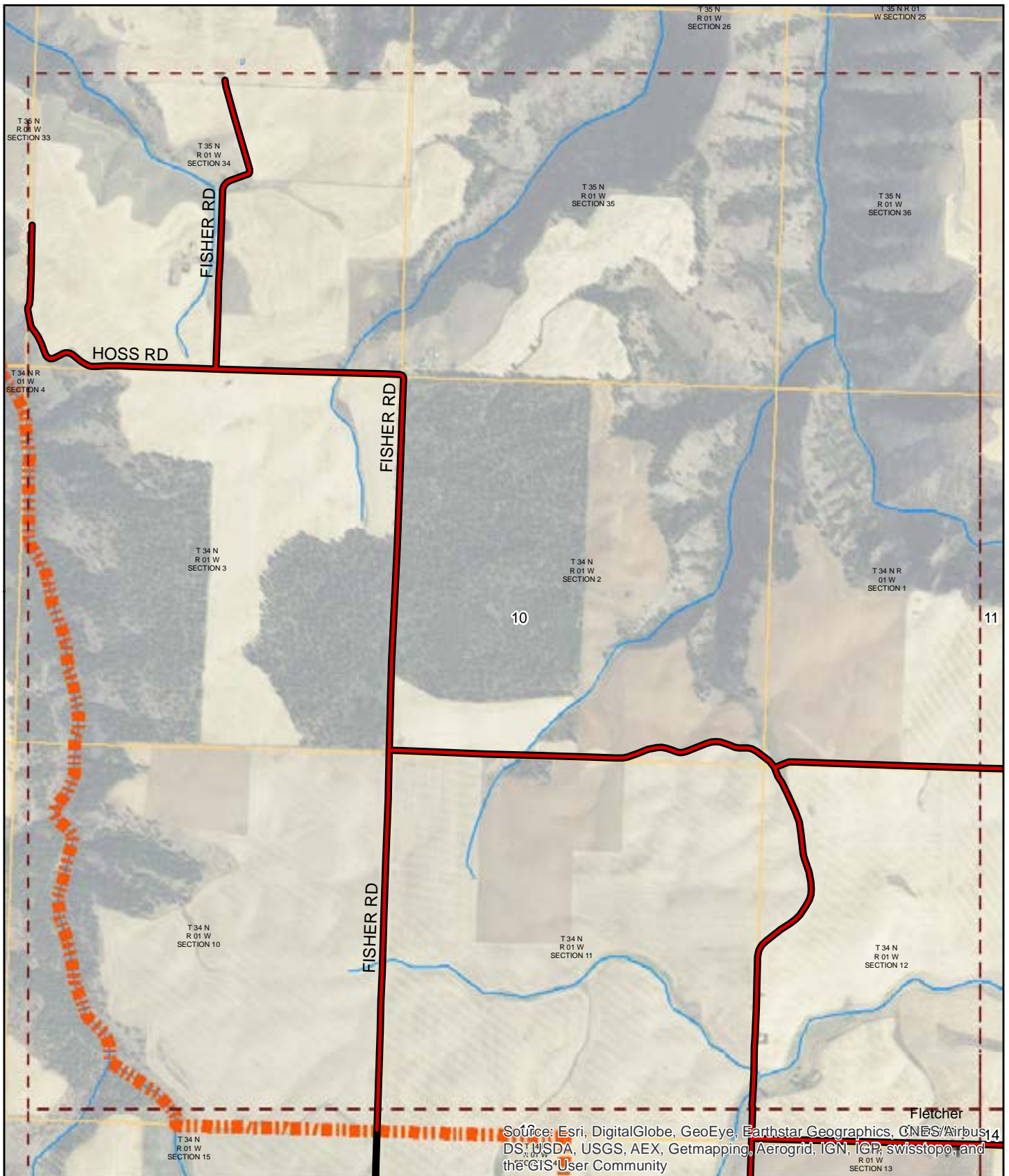
0 0.5 1 miles

Page: 9 of 15

Map Date: 2/12/2016

LRI Revised: 10/31/2015





ITD MAP DISCLAIMER:

The Idaho Transportation Department (ITD) provides this information, including geographic data and any associated metadata "as is" without warranty of any kind, including but not limited to its completeness, fitness for a particular use, or accuracy of content, positional or otherwise. It is the sole responsibility of the user to determine the accuracy or usability of any information, data or metadata for his, or her, own purposes. In no event shall ITD have any liability whatsoever for damages of any kind arising out of the use of or reliance on the information, geographic data or metadata. In providing this information, data, metadata, or access to such, ITD assumes no obligation to assist the user in the use of such or in the development, use, or maintenance of any applications applied to or associated with such.

2015 ROAD SURFACE MAP

NORTH

HIGHWAY DISTRICT

LEWIS COUNTY, IDAHO

Prepared by the Idaho Transportation Department in cooperation with the U.S. Department of Transportation Federal Highway Administration

Page: 10 of 15

Map Date: 2/12/2016

LRI Revised: 10/31/2015



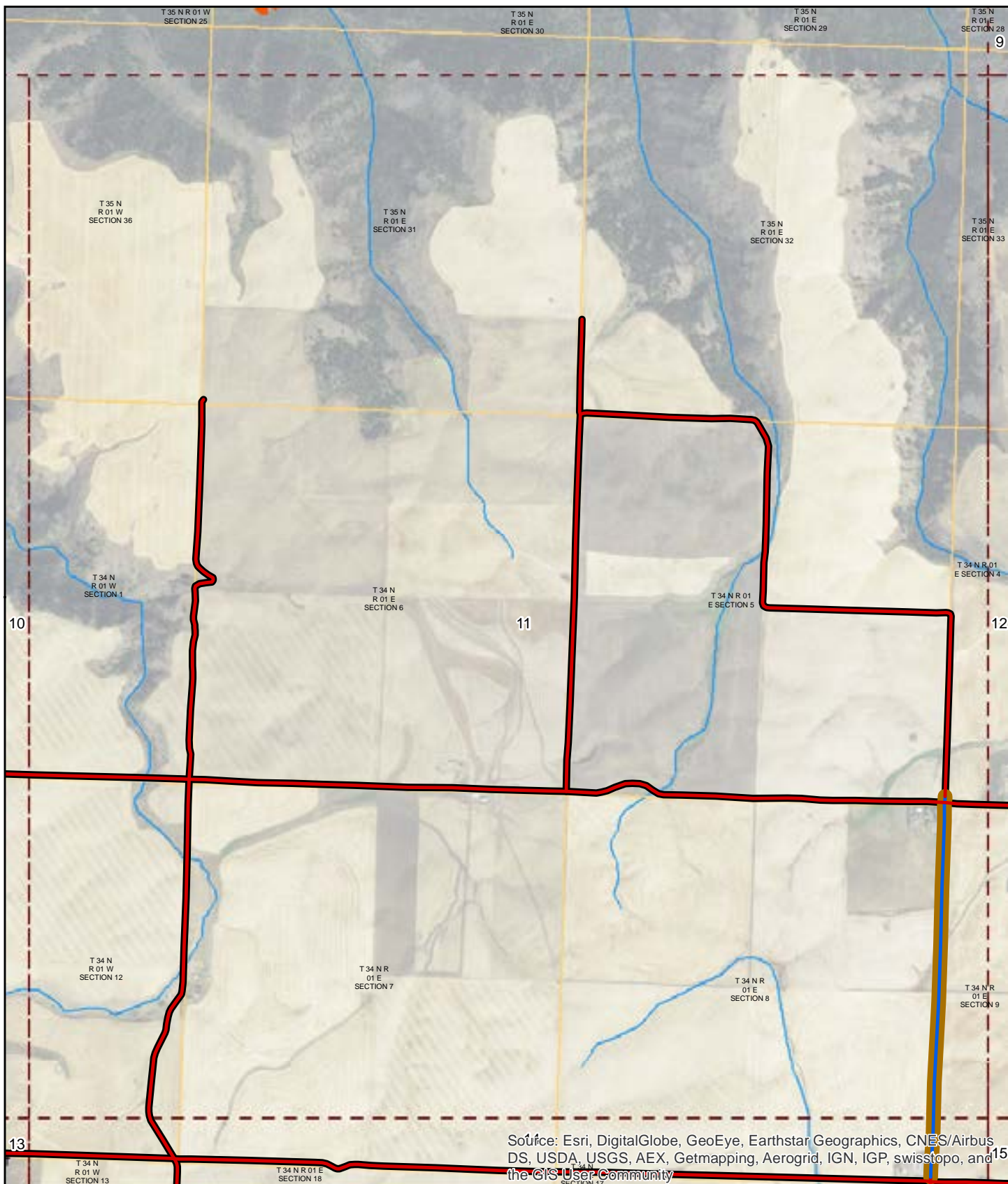
0 miles

0.5

1

Document Path: W:\LocalRds\RoadSurface\Projects\RoadSurface-08.5x11.mxd





Source: Esri, DigitalGlobe, GeoEye, Earthstar Geographics, CNES/Airbus DS, USDA, USGS, AEX, Getmapping, Aerogrid, IGN, IGP, swisstopo, and the GIS User Community

ITD MAP DISCLAIMER:

The Idaho Transportation Department (ITD) provides this information, including geographic data and any associated metadata "as is" without warranty of any kind, including but not limited to its completeness, fitness for a particular use, or accuracy of content, positional or otherwise. It is the sole responsibility of the user to determine the accuracy or usability of any information, data or metadata for his, or her, own purposes. In no event shall ITD have any liability whatsoever for damages of any kind arising out of the use of or reliance on the information, geographic data or metadata. In providing this information, data, metadata, or access to such, ITD assumes no obligation to assist the user in the use of such or in the development, use, or maintenance of any applications applied to or associated with such.

2015 ROAD SURFACE MAP

NORTH

HIGHWAY DISTRICT

LEWIS COUNTY, IDAHO

Prepared by the Idaho Transportation Department in cooperation with the U.S. Department of Transportation Federal Highway Administration

Page: 11 of 15

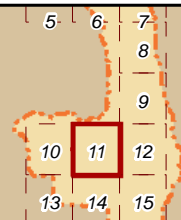
Map Date: 2/12/2016

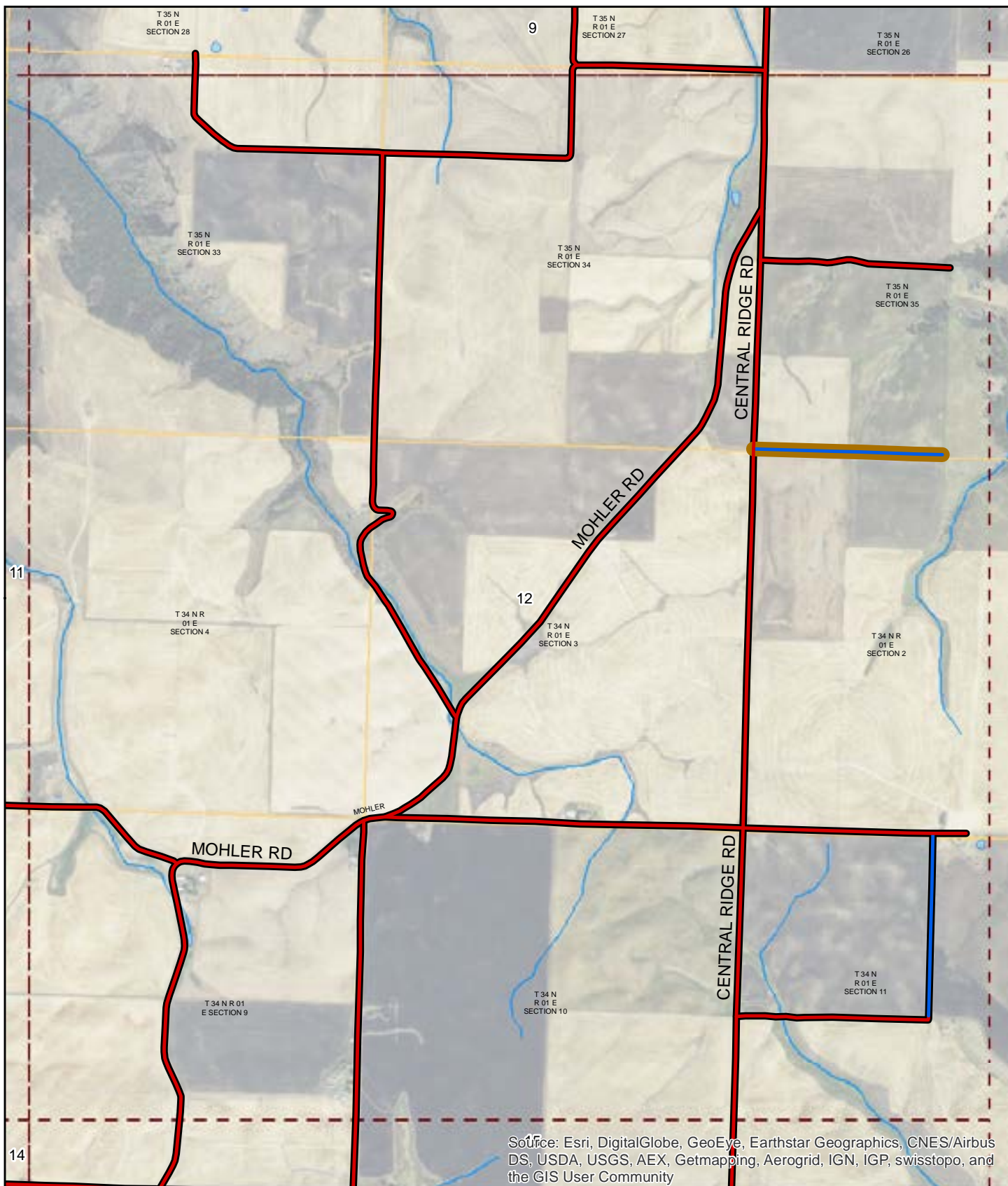
LRI Revised: 10/31/2015



0 0.5 1 miles

Document Path: W:\LocalRds\RoadSurface\Projects\RoadSurface-08.5x11.mxd





ITD MAP DISCLAIMER:

The Idaho Transportation Department (ITD) provides this information, including geographic data and any associated metadata "as is" without warranty of any kind, including but not limited to its completeness, fitness for a particular use, or accuracy of content, positional or otherwise. It is the sole responsibility of the user to determine the accuracy or usability of any information, data or metadata for his, or her, own purposes. In no event shall ITD have any liability whatsoever for damages of any kind arising out of the use of or reliance on the information, geographic data or metadata. In providing this information, data, metadata, or access to such, ITD assumes no obligation to assist the user in the use of such or in the development, use, or maintenance of any applications applied to or associated with such.

2015 ROAD SURFACE MAP

NORTH

HIGHWAY DISTRICT

LEWIS COUNTY, IDAHO

Prepared by the Idaho Transportation Department in cooperation with the U.S. Department of Transportation Federal Highway Administration

Page: 12 of 15

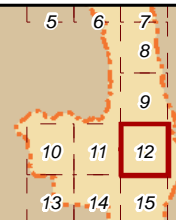
Map Date: 2/12/2016

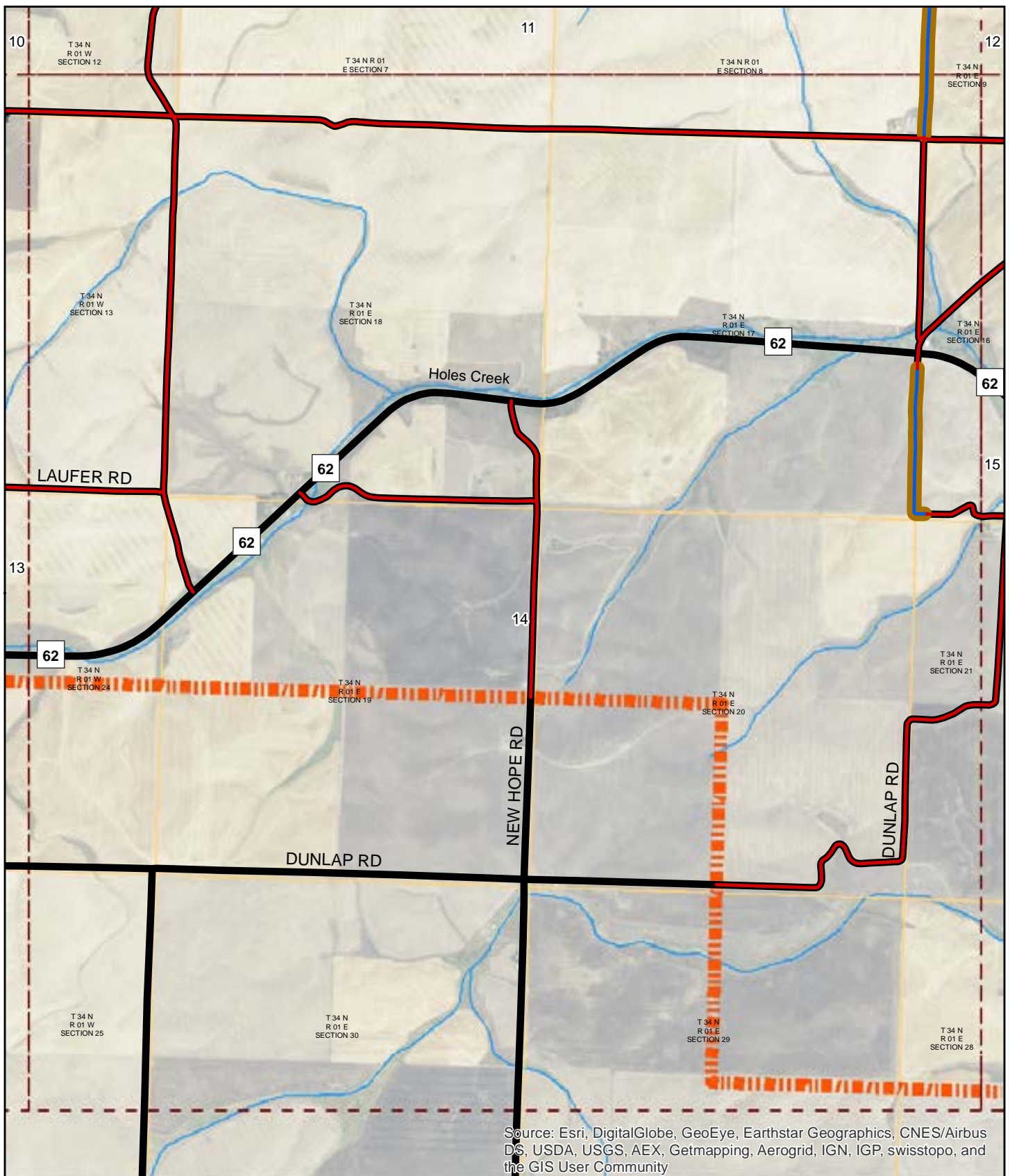
LRI Revised: 10/31/2015



0 0.5 1 miles

Document Path: W:\LocalRds\RoadSurface\Projects\RoadSurface-08.5x11.mxd





ITD MAP DISCLAIMER:

The Idaho Transportation Department (ITD) provides this information, including geographic data and any associated metadata "as is" without warranty of any kind, including but not limited to its completeness, fitness for a particular use, or accuracy of content, positional or otherwise. It is the sole responsibility of the user to determine the accuracy or usability of any information, data or metadata for his, or her, own purposes. In no event shall ITD have any liability whatsoever for damages of any kind arising out of the use of or reliance on the information, geographic data or metadata. In providing this information, data, metadata, or access to such, ITD assumes no obligation to assist the user in the use of such or in the development, use, or maintenance of any applications applied to or associated with such.

2015 ROAD SURFACE MAP

NORTH

HIGHWAY DISTRICT

LEWIS COUNTY, IDAHO

Prepared by the Idaho Transportation Department in cooperation with the U.S. Department of Transportation Federal Highway Administration

Page: 14 of 15

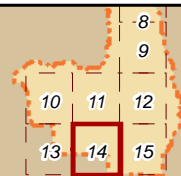
Map Date: 2/12/2016

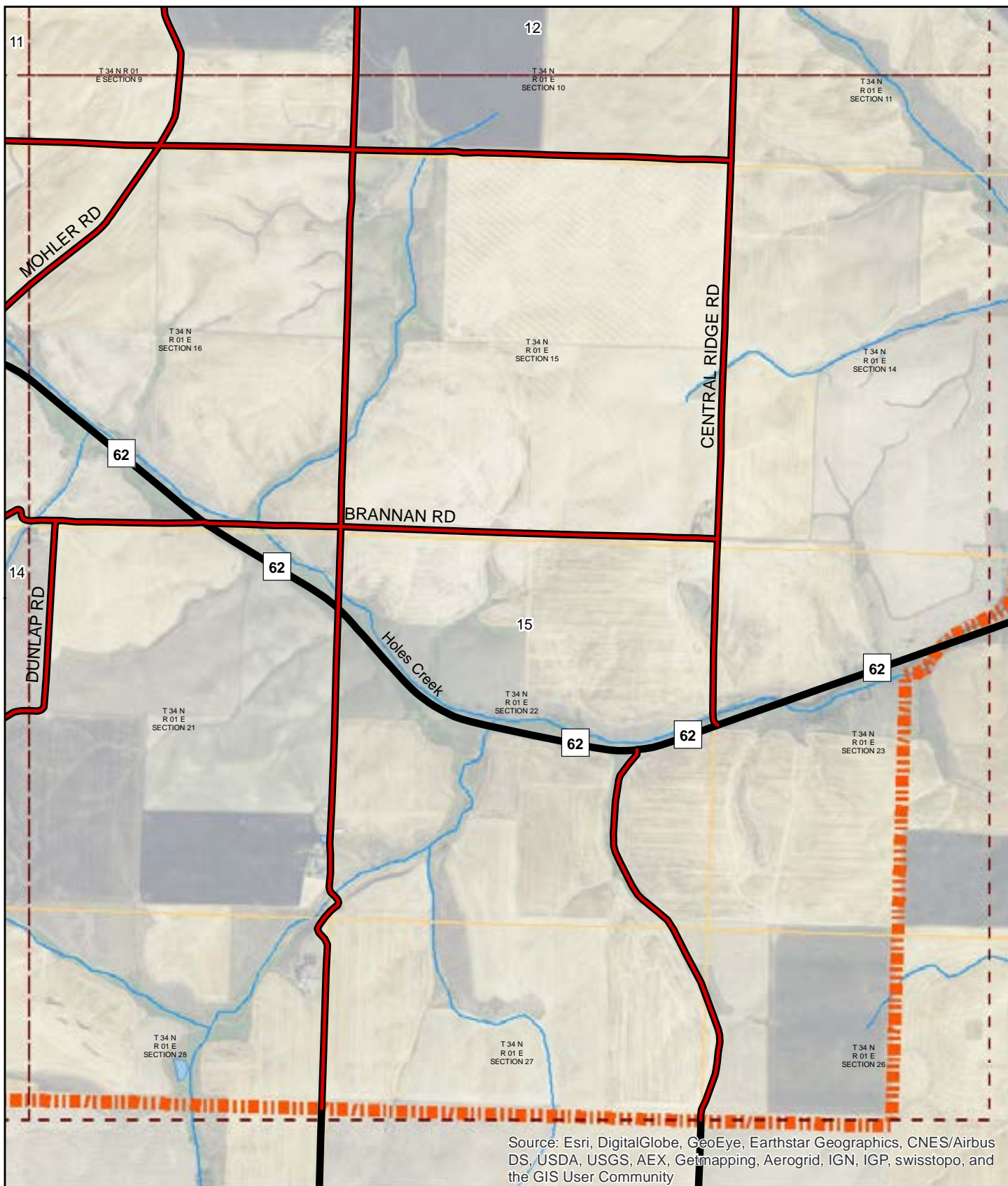
LRI Revised: 10/31/2015



0 0.5 1 miles

Document Path: W:\LocalRds\RoadSurface\Projects\RoadSurface-08.5x11.mxd





ITD MAP DISCLAIMER:

The Idaho Transportation Department (ITD) provides this information, including geographic data and any associated metadata "as is" without warranty of any kind, including but not limited to its completeness, fitness for a particular use, or accuracy of content, positional or otherwise. It is the sole responsibility of the user to determine the accuracy or usability of any information, data or metadata for his, or her, own purposes. In no event shall ITD have any liability whatsoever for damages of any kind arising out of the use of or reliance on the information, geographic data or metadata. In providing this information, data, metadata, or access to such, ITD assumes no obligation to assist the user in the use of such or in the development, use, or maintenance of any applications applied to or associated with such.

Document Path: W:\LocalRds\RoadSurface\Projects\RoadSurface-08.5x11.mxd

2015 ROAD SURFACE MAP

NORTH

HIGHWAY DISTRICT

LEWIS COUNTY, IDAHO

Prepared by the Idaho Transportation Department in cooperation with the U.S. Department of Transportation Federal Highway Administration

Page: 15 of 15

Map Date: 2/12/2016

LRI Revised: 10/31/2015



0 0.5 1 miles

