

10/14/2015

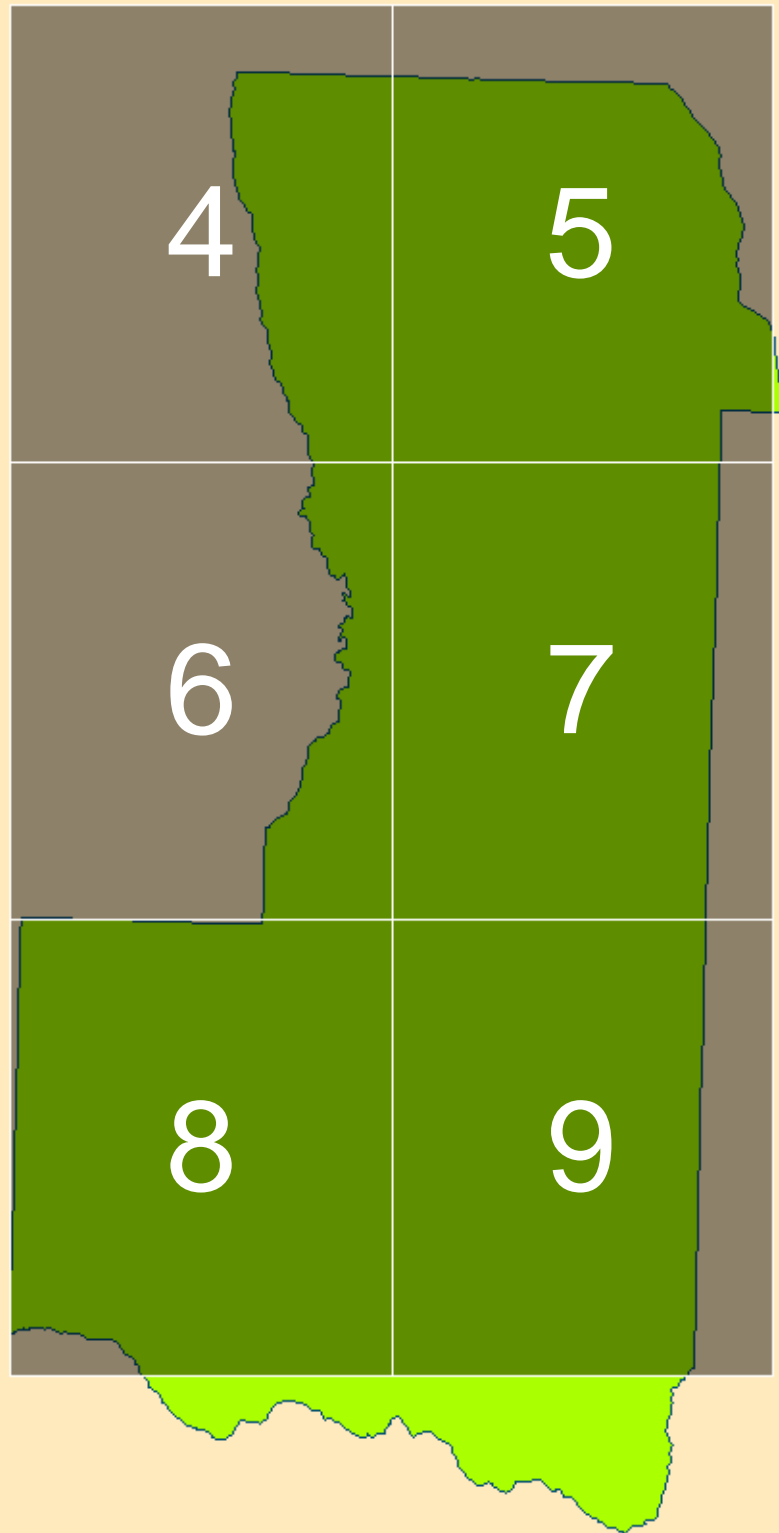


Idaho  
Transportation  
Department

# PRAIRIE HIGHWAY DISTRICT MAP BOOK    SCALE 44,685



PREPARED BY THE Idaho Transportation Department | jhill



**PRAIRIE HIGHWAY DISTRICT  
LOCATOR GRID  
MAP BOOK  
PAGE NUMBERS**

## Legend



Mountain Peak



Summit



airport



cemetery



range



island

--- 4 or more thru lanes

### sdeprod.SDE.IDAHO1TABLE Events

#### SURFTYPE

— EARTH

— GRAVEL

— F-Asphalt/oil treated gravel less than 1"

— G-1-Road or Cold Plant mix Asphalt

— G-2-Hot mix asphalt pavement

— J-Other (e.g., concrete, cobble stone or brick surface)

||||| 1/2 Jurisdiction

#### ROAD\_STATUS

— Unimproved Road

— Routes

— PrairieHd2\_3X2\_5

— CitiesCurrent

— Rivers and Streams

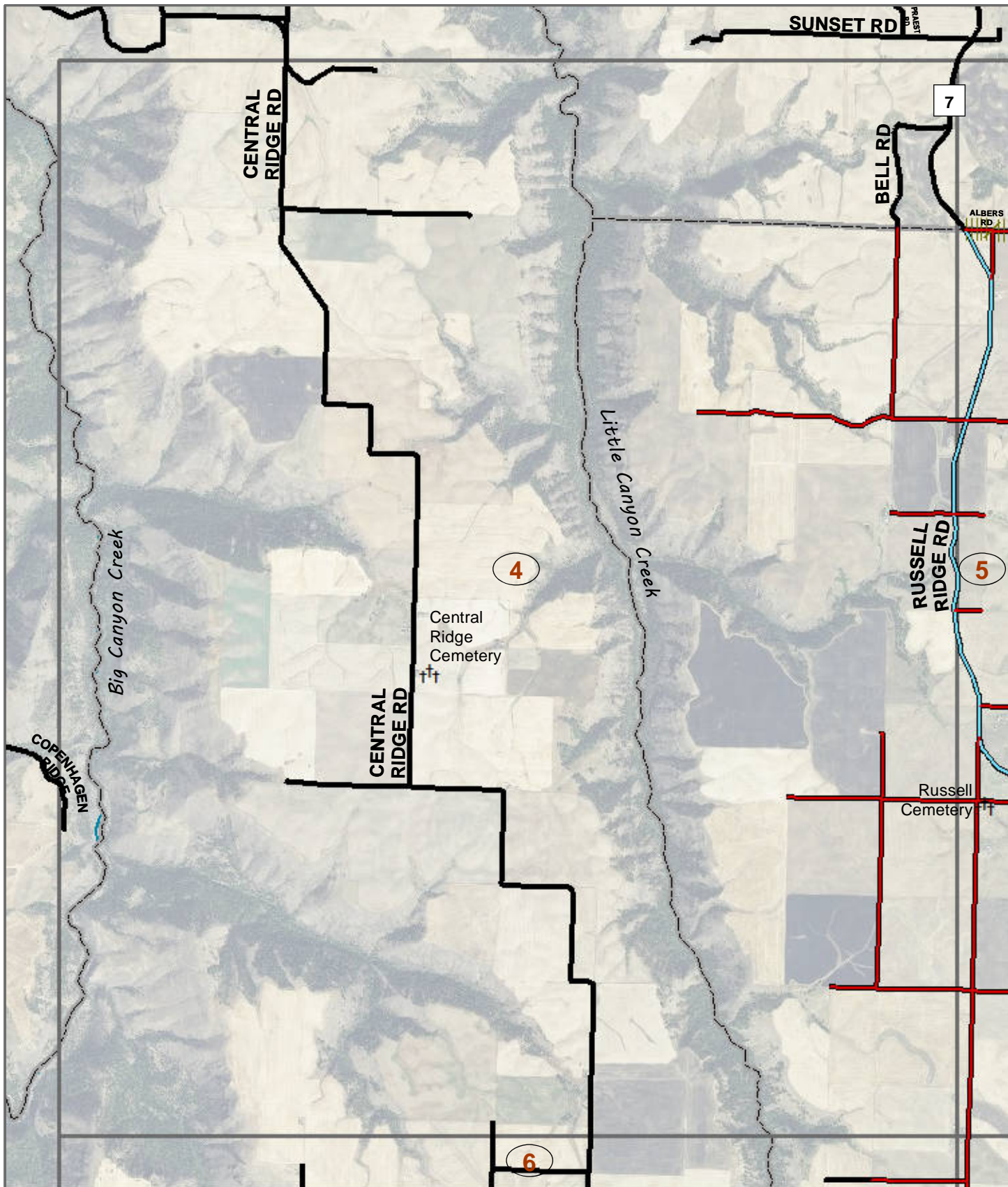
— Lakes\_Reservoirs

— LocalHwyBoundary

PREPARED BY THE  
IDAHO TRANSPORTATION DEPARTMENT  
IN COOPERATION WITH THE  
U.S. DEPARTMENT OF TRANSPORTATION  
FEDERAL HIGHWAY ADMINISTRATION

Coordinate System: NAD 1983 Idaho TM  
Projection: Transverse Mercator  
Datum: North American 1983  
False Easting: 2,500,000.0000  
False Northing: 1,200,000.0000  
Central Meridian: -114.0000  
Scale Factor: 0.9996  
Latitude Of Origin: 42.0000  
Units: Meter

The Idaho Transportation Department (ITD) provides this information, including geographic data and any associated metadata "as is" without warranty of any kind, including but not limited to its completeness, fitness for a particular use, or accuracy of content, positional or otherwise. It is the sole responsibility of the user to determine the accuracy or usability of any information, data or metadata for his or her own purposes. In no event shall ITD have any liability whatsoever for damages of any kind arising out of the use of or reliance on the information, geographic data or metadata. In providing this information, data, metadata, or access to such, ITD assumes no obligation to assist the user in the use of such or in the development, use, or maintenance of any applications applied to or associated with such.



2015 ROAD  
SURFACE MAP  
PRAIRIE  
HIGHWAY  
DISTRICT  
LEWIS COUNTY  
IDAHO

The Idaho Transportation Department (ITD) provides this information, including geographic data and any associated metadata "as is" without warranty of any kind, including but not limited to its completeness, fitness for a particular use, or accuracy of content, positional or otherwise. It is the sole responsibility of the user to determine the accuracy or usability of any information, data or metadata for his or her own purposes. In no event shall ITD have any liability whatsoever for damages of any kind arising out of the use of or reliance on the information, geographic data or metadata. In providing this information, data, metadata, or access to such, ITD assumes no obligation to assist the user in the use of such or in the development, use, or maintenance of any applications applied to or associated with such.

Print Date: 10/14/2015

Local Road System Revised October 1, 2015

Path: W:\LocalRds\RdSurface\LMAPS\LewisCounty\PrairieHdMapBookRdsOnly\PrairieHdMapBookCom.mxd

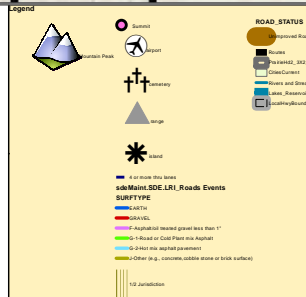
0 0.25 0.5 1 Miles

Scale: 1:44,815

Coordinate System: NAD 1983 Idaho TM  
Projection: Transverse Mercator  
Datum: North American 1983  
False Easting: 2,500,000.0000  
False Northing: 1,200,000.0000  
Central Meridian: -114.0000  
Scale Factor: 0.9996  
Latitude Of Origin: 42.0000  
Units: Meter

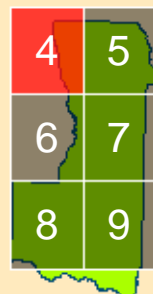


PREPARED BY THE  
IDAHO TRANSPORTATION DEPARTMENT  
IN COOPERATION WITH THE  
U.S. DEPARTMENT OF TRANSPORTATION  
FEDERAL HIGHWAY ADMINISTRATION

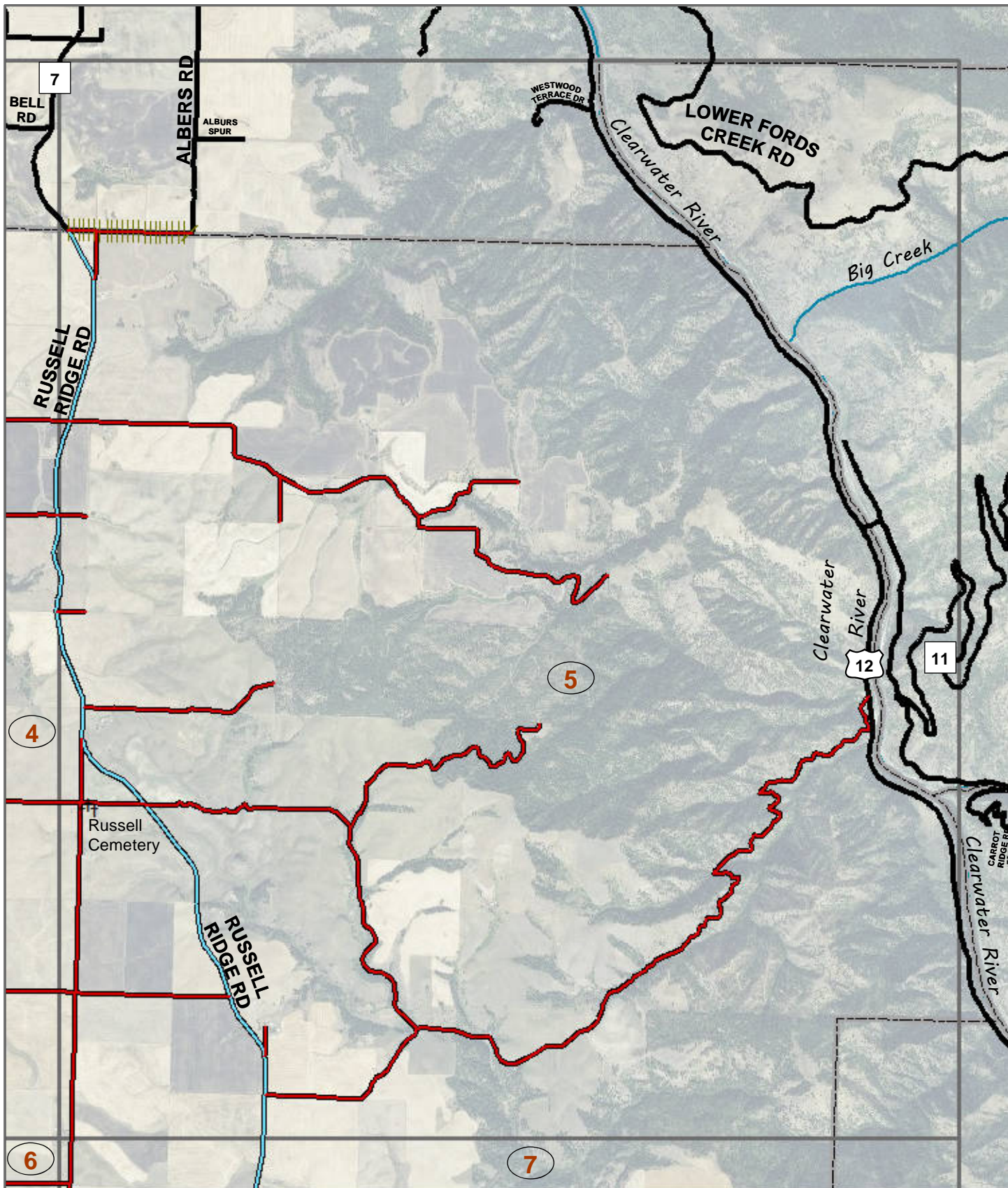


PRAIRIE  
HIGHWAY  
DISTRICT

4







**2015 ROAD  
SURFACE MAP  
PRAIRIE  
HIGHWAY  
DISTRICT  
LEWIS COUNTY  
IDAHO**

The Idaho Transportation Department (ITD) provides this information, including geographic data and any associated metadata "as is" without warranty of any kind, including but not limited to its completeness, fitness for a particular use, or accuracy of content, positional or otherwise. It is the sole responsibility of the user to determine the accuracy or usability of any information, data or metadata for his or her own purposes. In no event shall ITD have any liability whatsoever for damages of any kind arising out of the use of or reliance on the information, geographic data or metadata. In providing this information, data, metadata, or access to such, ITD assumes no obligation to assist the user in the use of such or in the development, use, or maintenance of any applications applied to or associated with such.

**Print Date: 10/14/2015**

Local Road System Revised October 1, 2015

Path: W:\LocalRds\RdSurface\RIMAPS\LewisCounty\PrairieHdMapBookRdsOnly\PrairieHdMapBookCom.mxd

0 0.25 0.5 1 Miles

Scale: 1:44,815

Coordinate System: NAD 1983 Idaho TM

Projection: Transverse Mercator

Datum: North American 1983

False Easting: 2,500,000.0000

False Northing: 1,200,000.0000

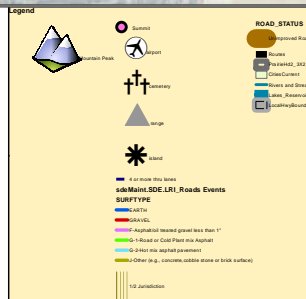
Central Meridian: -114.0000

Scale Factor: 0.9996

Latitude Of Origin: 42.0000

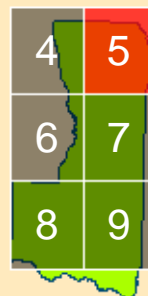
Units: Meter

PREPARED BY THE  
IDAHO TRANSPORTATION DEPARTMENT  
IN COOPERATION WITH THE  
U.S. DEPARTMENT OF TRANSPORTATION  
FEDERAL HIGHWAY ADMINISTRATION



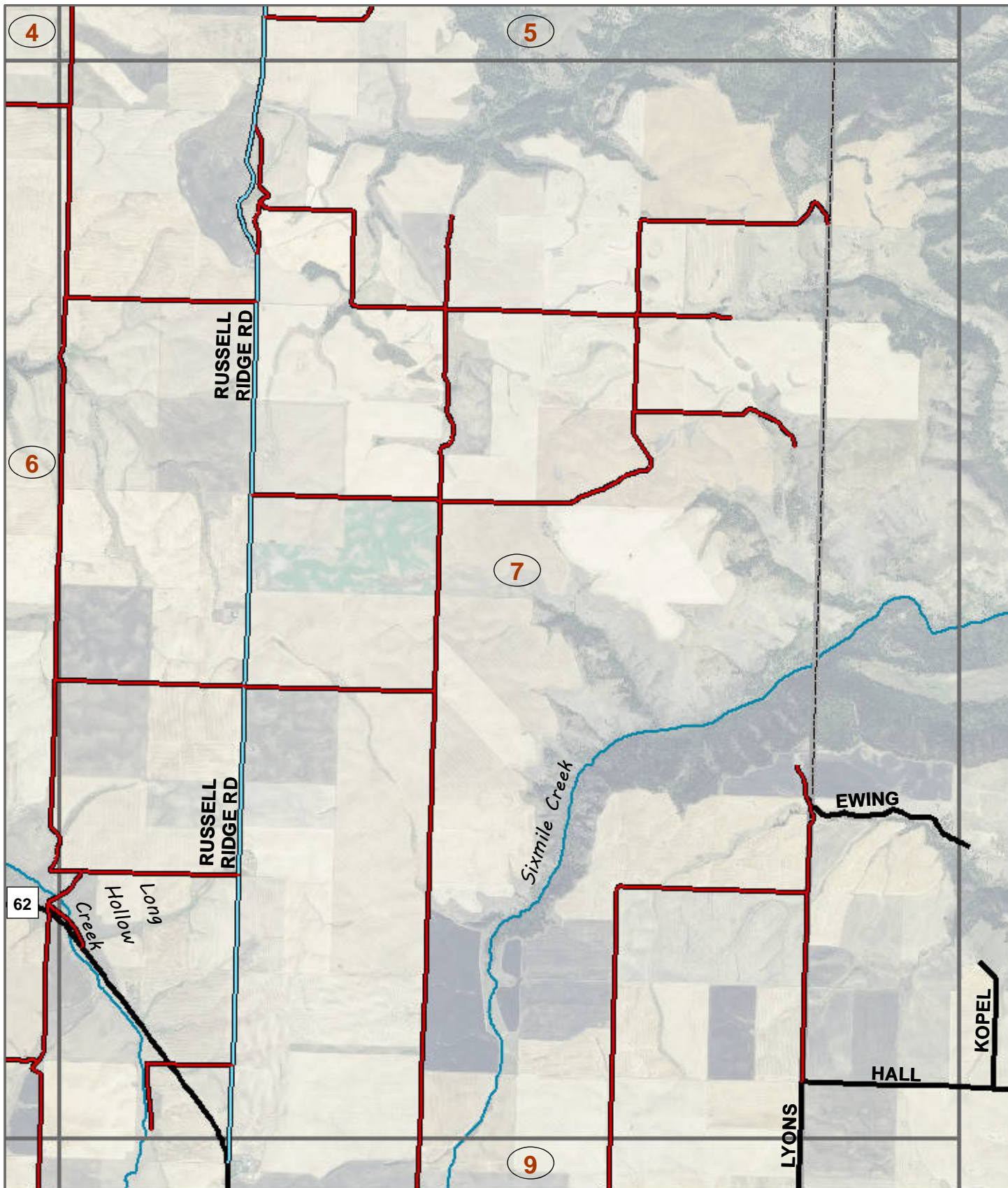
**PRAIRIE  
HIGHWAY  
DISTRICT**

5









2015 ROAD  
SURFACE MAP  
PRAIRIE  
HIGHWAY  
DISTRICT  
LEWIS COUNTY  
IDAHO

The Idaho Transportation Department (ITD) provides this information, including geographic data and any associated metadata "as is" without warranty of any kind, including but not limited to its completeness, fitness for a particular use, or accuracy of content, positional or otherwise. It is the sole responsibility of the user to determine the accuracy or usability of any information, data or metadata for his or her own purposes. In no event shall ITD have any liability whatsoever for damages of any kind arising out of the use of or reliance on the information, geographic data or metadata. In providing this information, data, metadata, or access to such, ITD assumes no obligation to assist the user in the use of such or in the development, use, or maintenance of any applications applied to or associated with such.

Print Date: 10/14/2015

Local Road System Revised October 1, 2015

Path: W:\LocalRds\RdSurface\LMAPS\LewisCounty\PrairieHdMapBookRdsOnly\PrairieHdMapBookCom.mxd

0 0.25 0.5 1 Miles

Scale: 1:44,815  
Coordinate System: NAD 1983 Idaho TM  
Projection: Transverse Mercator  
Datum: North American 1983  
False Easting: 2,500,000.0000  
False Northing: 1,200,000.0000  
Central Meridian: -114.0000  
Scale Factor: 0.9996  
Latitude Of Origin: 42.0000  
Units: Meter

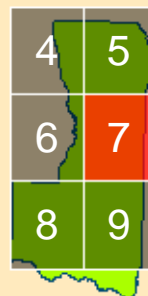


PREPARED BY THE  
IDAHO TRANSPORTATION DEPARTMENT  
IN COOPERATION WITH THE  
U.S. DEPARTMENT OF TRANSPORTATION  
FEDERAL HIGHWAY ADMINISTRATION

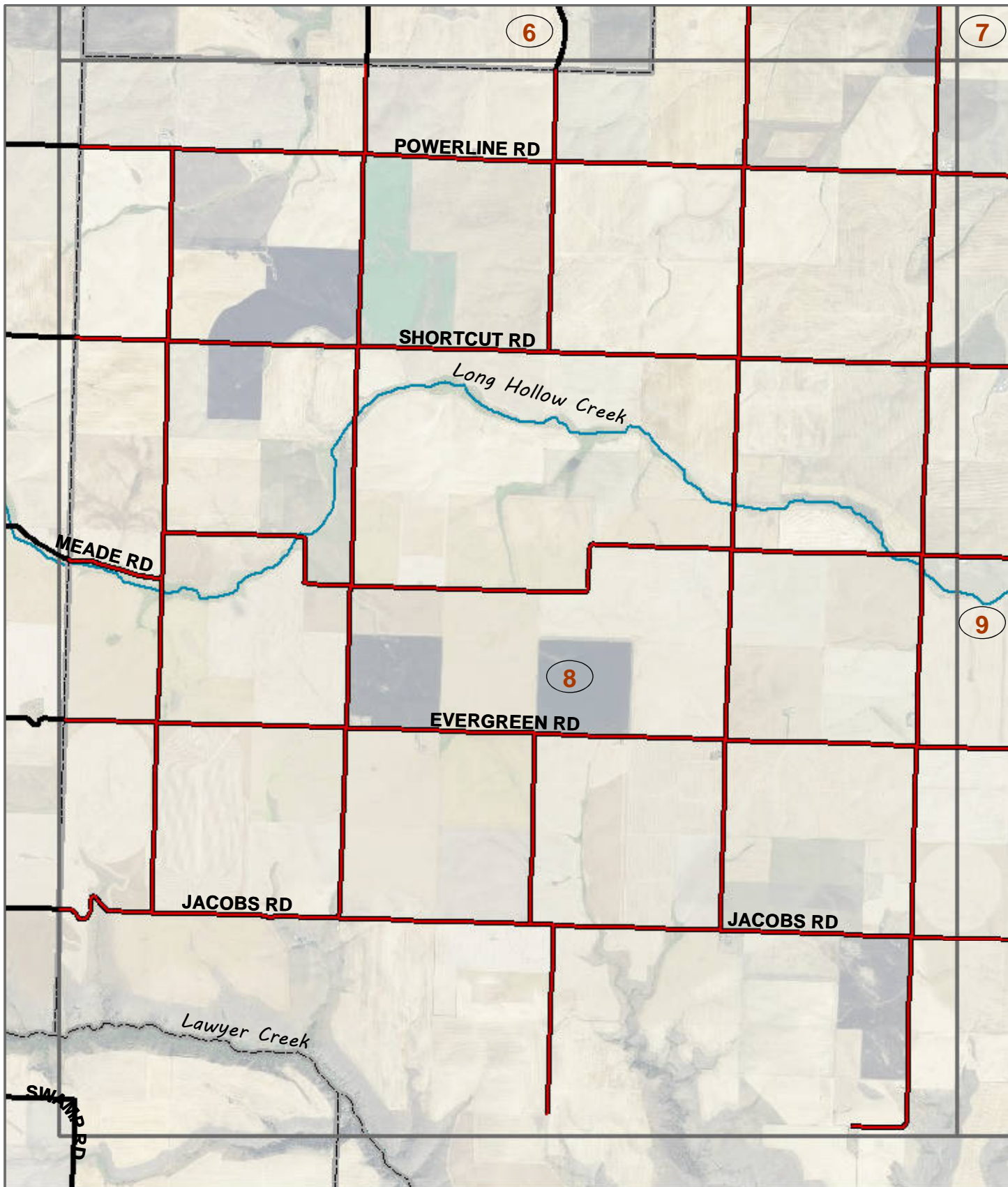


PRAIRIE  
HIGHWAY  
DISTRICT

7







2015 ROAD  
SURFACE MAP  
PRAIRIE  
HIGHWAY  
DISTRICT  
LEWIS COUNTY  
IDAHO

The Idaho Transportation Department (ITD) provides this information, including geographic data and any associated metadata "as is" without warranty of any kind, including but not limited to its completeness, fitness for a particular use, or accuracy of content, positional or otherwise. It is the sole responsibility of the user to determine the accuracy or usability of any information, data or metadata for his or her own purposes. In no event shall ITD have any liability whatsoever for damages of any kind arising out of the use of or reliance on the information, geographic data or metadata. In providing this information, data, metadata, or access to such, ITD assumes no obligation to assist the user in the use of such or in the development, use, or maintenance of any applications applied to or associated with such.

Print Date: 10/14/2015

Local Road System Revised October 1, 2015

Path: W:\LocalRds\RdSurface\LRIMAPS\LewisCounty\PrairieHdMapBookRdsOnly\PrairieHdMapBookCom.mxd

0 0.25 0.5 1 Miles

Scale: 1:44,815

Coordinate System: NAD 1983 Idaho TM  
Projection: Transverse Mercator  
Datum: North American 1983  
False Easting: 2,500,000.0000  
False Northing: 1,200,000.0000  
Central Meridian: -114.0000  
Scale Factor: 0.9996  
Latitude Of Origin: 42.0000  
Units: Meter



PREPARED BY THE  
IDAHO TRANSPORTATION DEPARTMENT  
IN COOPERATION WITH THE  
U.S. DEPARTMENT OF TRANSPORTATION  
FEDERAL HIGHWAY ADMINISTRATION





