

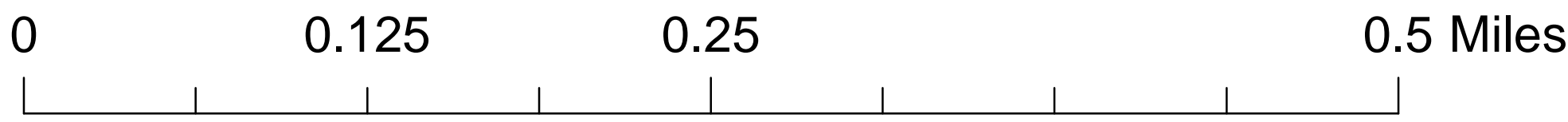
2015  
IDAHO TRANSPORTATION DEPARTMENT  
SEGMENT CODE AND GEO MILEAGE  
MAP

KAMIAH  
HIGHWAY  
DISTRICT  
LEWIS COUNTY  
IDAHO

Date: 3/2/2016

Local Road System Revised October 1, 2015

Path: W:\LocalRds\2012GeoMiles\MileageCK\LewisCounty\KamiahHdGeoMiles.mxd



Scale: 1:3,524

Coordinate System: NAD 1983 Idaho TM  
Projection: Transverse Mercator  
Datum: North American 1983  
False Easting: 2,500,000.0000  
False Northing: 1,200,000.0000  
Central Meridian: -114.0000  
Scale Factor: 0.9996  
Latitude Of Origin: 42.0000  
Units: Meter

PREPARED BY THE  
IDAHO TRANSPORTATION DEPARTMENT  
IN COOPERATION WITH THE  
U.S. DEPARTMENT OF TRANSPORTATION  
FEDERAL HIGHWAY ADMINISTRATION



The Idaho Transportation Department (ITD) provides this information, including geographic data and any associated metadata "as is" without warranty of any kind, including but not limited to its completeness, fitness for a particular use, or accuracy of content, positional or otherwise. It is the sole responsibility of the user to determine the accuracy or usability of any information, data or metadata for his or her own purposes. In no event shall ITD have any liability whatsoever for damages of any kind arising out of the use of or reliance on the information, geographic data or metadata. In providing this information, data, metadata, or access to such, ITD assumes no obligation to assist the user in the use of such or in the development, use, or maintenance of any applications applied to or associated with such.

Legend

Status

UNIMPROVED

LriProgramRoads2\_25\_2016

PayWeight

0.5

2

LriProgramRoads2\_25\_2016

Surface

EARTH

GRAVEL

F

G-1

G-2

J

LRS\_Routes02\_25\_2016

GNIS - Summit/Peak

airport

cemetery

range

island

Section

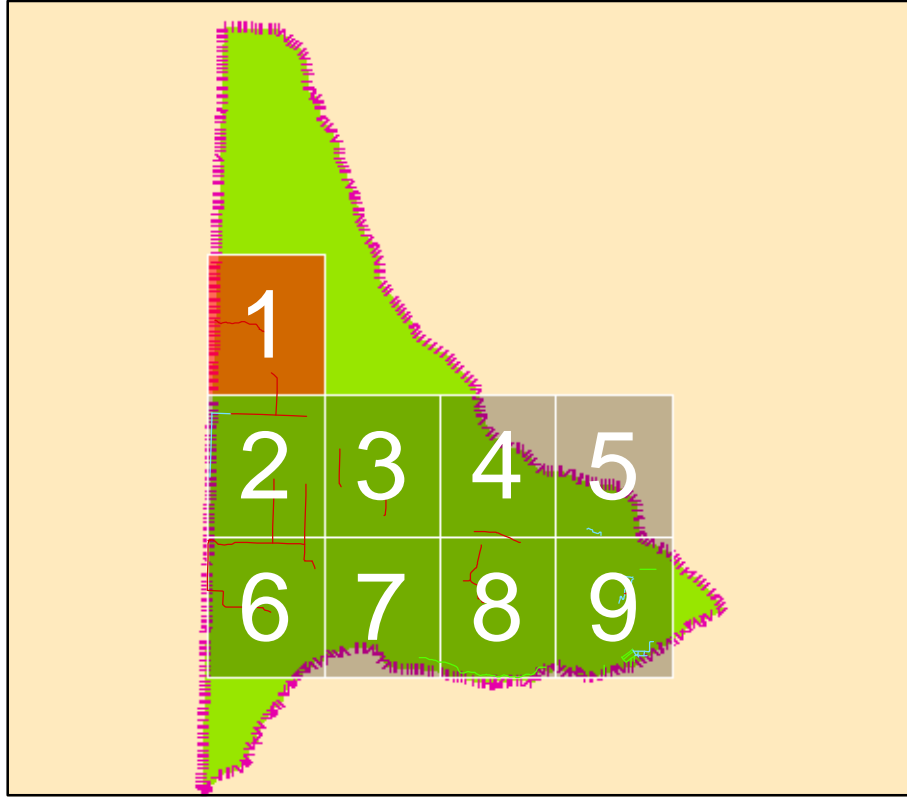
Waterbody

River

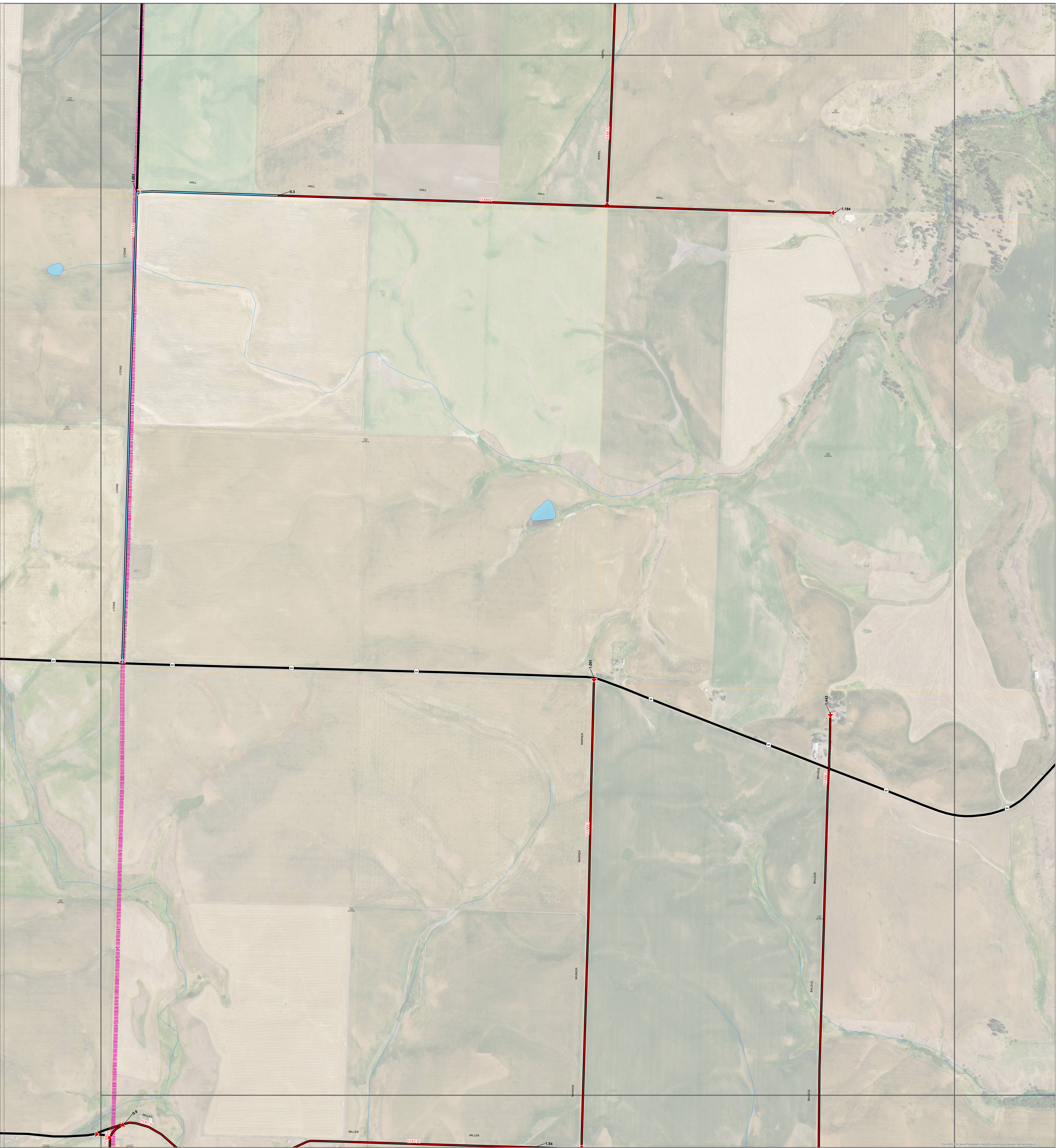
KamiahHdGeoMilesGrid

KamiahHwyDistrictBoundary

CitiesCurrent







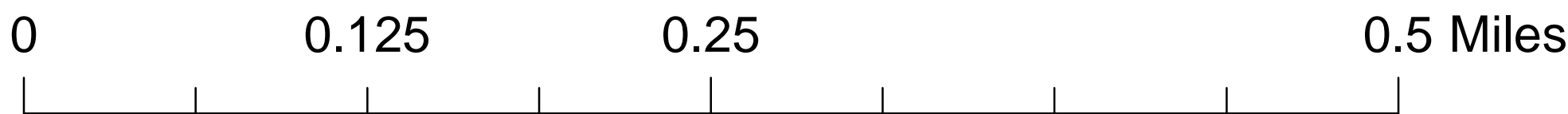
2015  
IDAHO TRANSPORTATION DEPARTMENT  
SEGMENT CODE AND GEO MILEAGE  
MAP

KAMIAH  
HIGHWAY  
DISTRICT  
LEWIS COUNTY  
IDAHO

Date: 3/2/2016

Local Road System Revised October 1, 2015

Path: W:\LocalRds\2012GeoMiles\MileageCK\LewisCounty\KamiahHdGeoMiles.mxd



Scale: 1:3,524

Coordinate System: NAD 1983 Idaho TM  
Projection: Transverse Mercator  
Datum: North American 1983  
False Easting: 2,500,000.0000  
False Northing: 1,200,000.0000  
Central Meridian: -114.0000  
Scale Factor: 0.9996  
Latitude Of Origin: 42.0000  
Units: Meter

PREPARED BY THE  
IDAHO TRANSPORTATION DEPARTMENT  
IN COOPERATION WITH THE  
U.S. DEPARTMENT OF TRANSPORTATION  
FEDERAL HIGHWAY ADMINISTRATION



The Idaho Transportation Department (ITD) provides this information, including geographic data and any associated metadata "as is" without warranty of any kind, including but not limited to its completeness, fitness for a particular use, or accuracy of content, positional or otherwise. It is the sole responsibility of the user to determine the accuracy or usability of any information, data or metadata for his or her own purposes. In no event shall ITD have any liability whatsoever for damages of any kind arising out of the use of or reliance on the information, geographic data or metadata. In providing this information, data, metadata, or access to such, ITD assumes no obligation to assist the user in the use of such or in the development, use, or maintenance of any applications applied to or associated with such.

Legend

Status

UNIMPROVED

LriProgramRoads2\_25\_2016

PayWeight

0.5

2

LriProgramRoads2\_25\_2016

Surface

EARTH

GRAVEL

F

G-1

G-2

J

LRS\_Routes02\_25\_2016

GNIS - Summit/Peak

airport

cemetery

range

island

Section

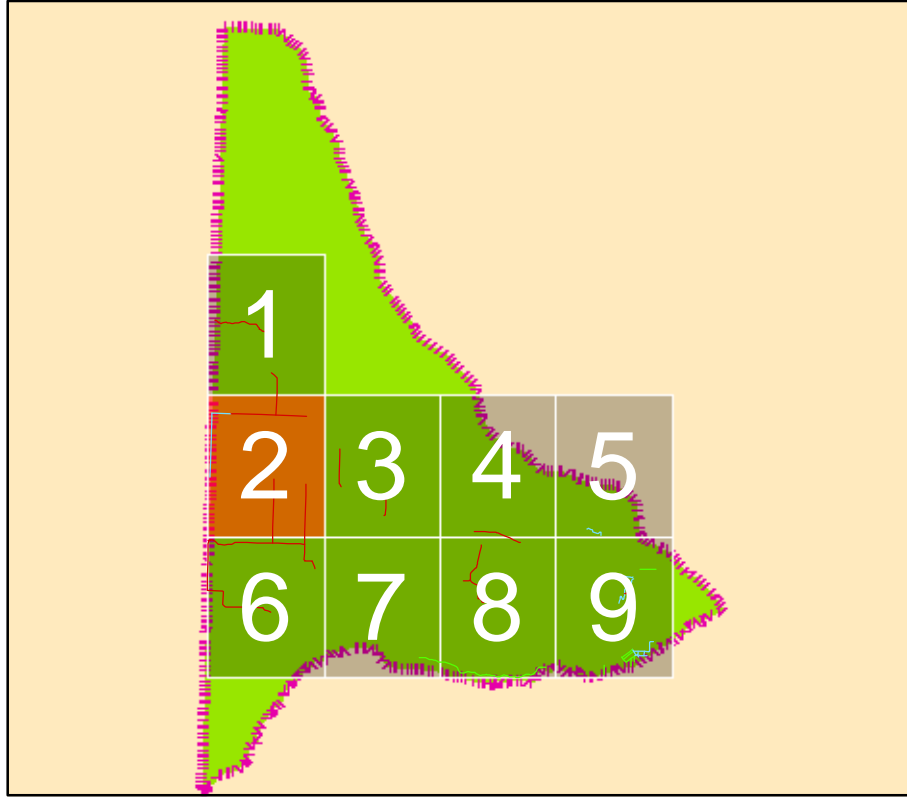
Waterbody

River

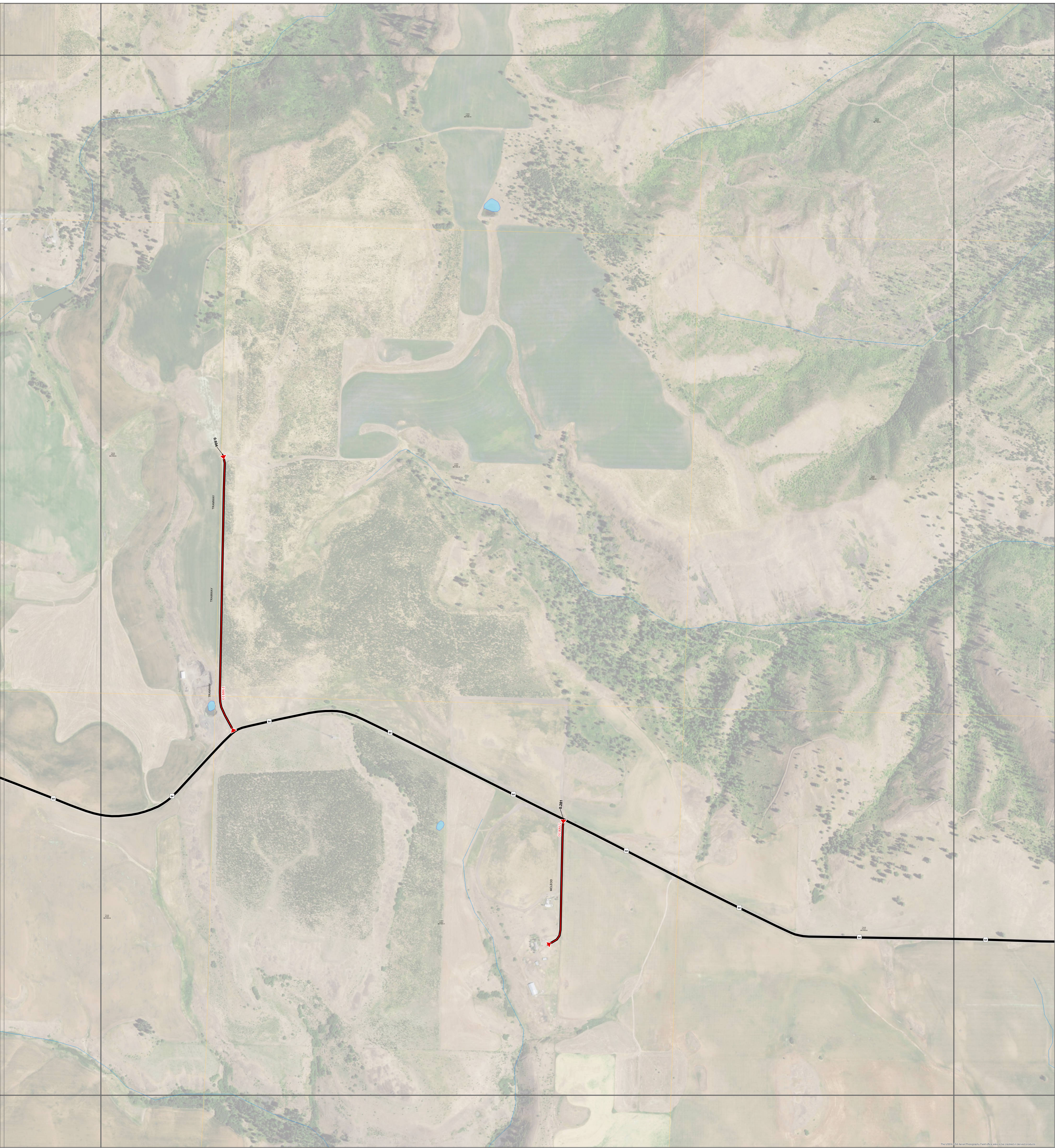
KamiahHdGeoMilesGrid

KamiahHwyDistrictBoundary

CitiesCurrent







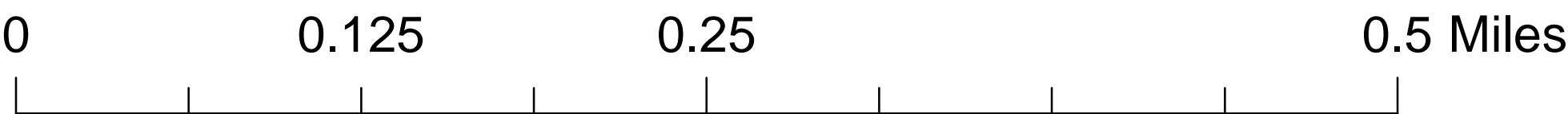
2015  
IDAHO TRANSPORTATION DEPARTMENT  
SEGMENT CODE AND GEO MILEAGE  
MAP

KAMIAH  
HIGHWAY  
DISTRICT  
LEWIS COUNTY  
IDAHO

Date: 3/2/2016

Local Road System Revised October 1, 2015

Path: W:\LocalRds\2012GeoMiles\MileageCK\LewisCounty\KamiahHdGeoMiles.mxd



Scale: 1:3,524

Coordinate System: NAD 1983 Idaho TM  
Projection: Transverse Mercator  
Datum: North American 1983  
False Easting: 2,500,000.0000  
False Northing: 1,200,000.0000  
Central Meridian: -114.0000  
Scale Factor: 0.9996  
Latitude Of Origin: 42.0000  
Units: Meter

PREPARED BY THE  
IDAHO TRANSPORTATION DEPARTMENT  
IN COOPERATION WITH THE  
U.S. DEPARTMENT OF TRANSPORTATION  
FEDERAL HIGHWAY ADMINISTRATION



The Idaho Transportation Department (ITD) provides this information, including geographic data and any associated metadata "as is" without warranty of any kind, including but not limited to its completeness, fitness for a particular use, or accuracy of content, positional or otherwise. It is the sole responsibility of the user to determine the accuracy or usability of any information, data or metadata for his or her own purposes. In no event shall ITD have any liability whatsoever for damages of any kind arising out of the use of or reliance on the information, geographic data or metadata. In providing this information, data, metadata, or access to such, ITD assumes no obligation to assist the user in the use of such or in the development, use, or maintenance of any applications applied to or associated with such.

Legend

Status

UNIMPROVED

LriProgramRoads2\_25\_2016

PayWeight

0.5

2

LriProgramRoads2\_25\_2016

Surface

EARTH

GRAVEL

F

G-1

G-2

J

LRS\_Routes02\_25\_2016

GNIS - Summit/Peak

airport

cemetery

range

island

Section

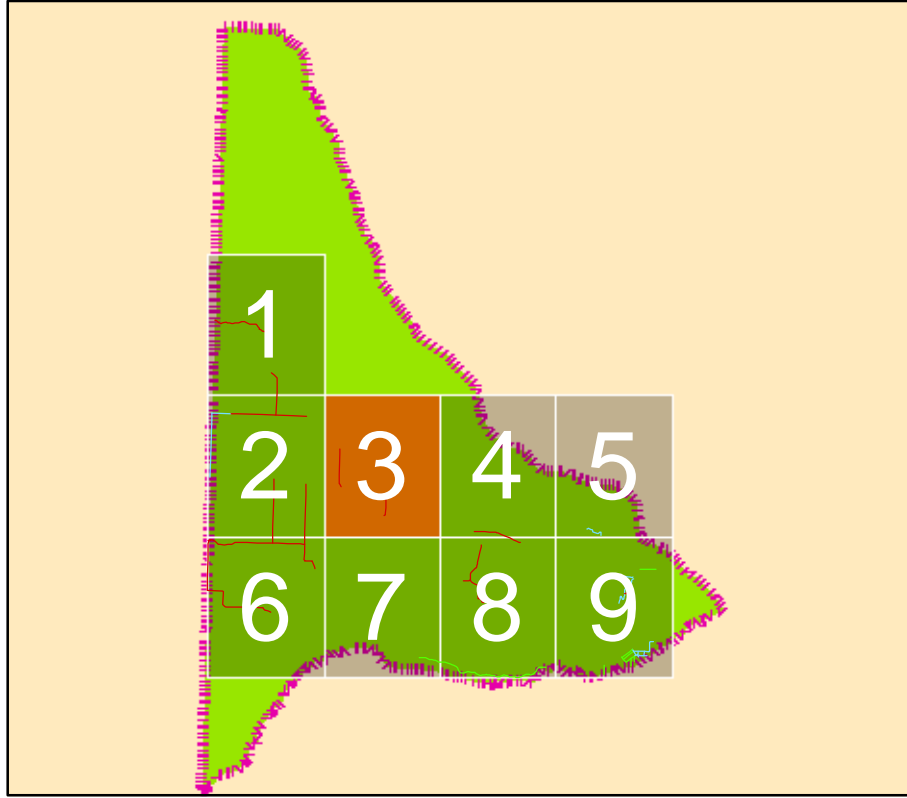
Waterbody

River

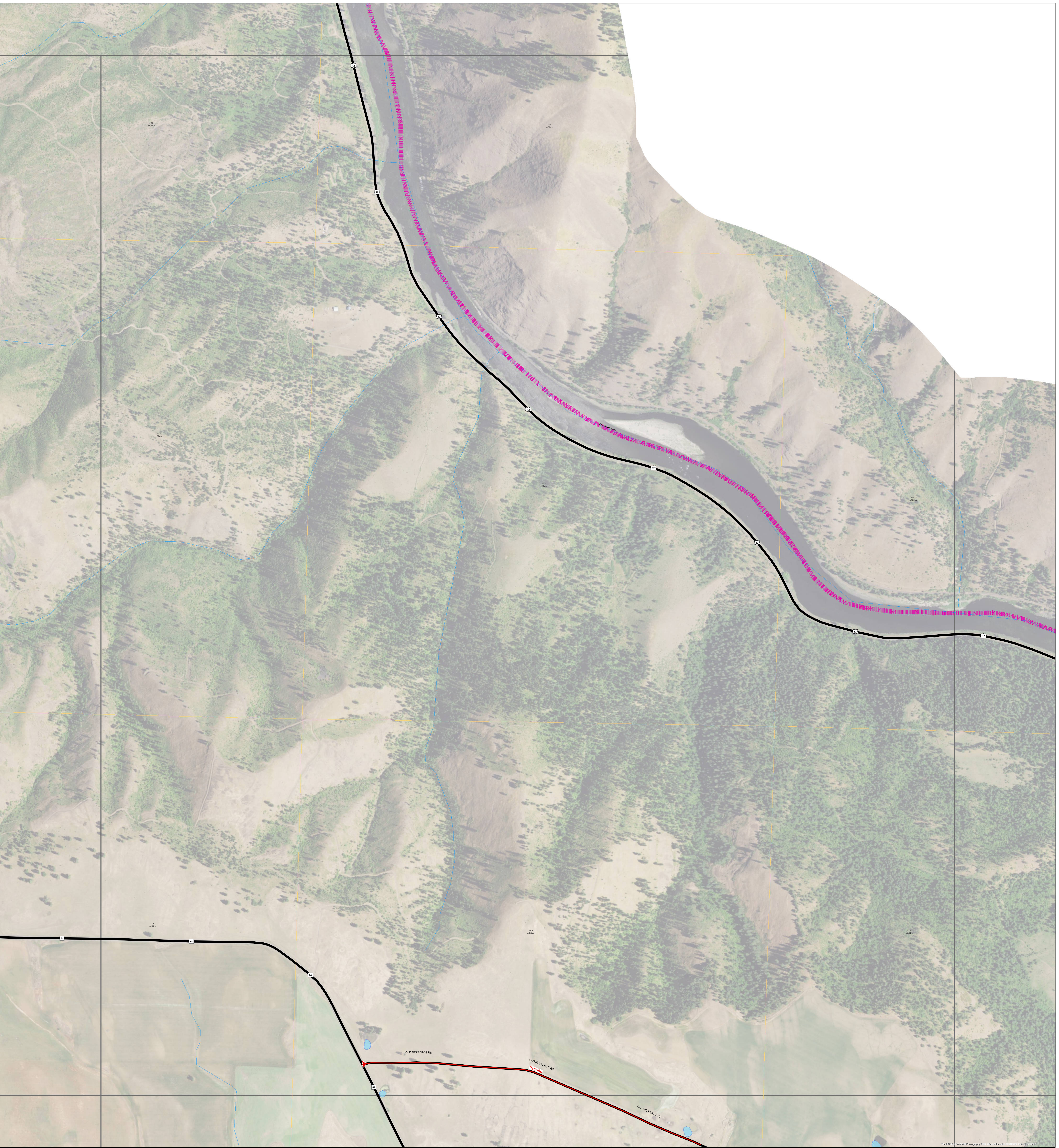
KamiahHdGeoMilesGrid

KamiahHwyDistrictBoundary

CitiesCurrent







2015  
IDAHO TRANSPORTATION DEPARTMENT  
SEGMENT CODE AND GEO MILEAGE  
MAP

KAMIAH  
HIGHWAY  
DISTRICT  
LEWIS COUNTY  
IDAHO

Date: 3/2/2016

Local Road System Revised October 1, 2015

Path: W:\LocalRds\2012GeoMiles\MileageCK\LewisCounty\KamiahHdGeoMiles.mxd

0 0.125 0.25 0.5 Miles

Scale: 1:3,524

Coordinate System: NAD 1983 Idaho TM  
Projection: Transverse Mercator  
Datum: North American 1983  
False Easting: 2,500,000.0000  
False Northing: 1,200,000.0000  
Central Meridian: -114.0000  
Scale Factor: 0.9996  
Latitude Of Origin: 42.0000  
Units: Meter

PREPARED BY THE  
IDAHO TRANSPORTATION DEPARTMENT  
IN COOPERATION WITH THE  
U.S. DEPARTMENT OF TRANSPORTATION  
FEDERAL HIGHWAY ADMINISTRATION



The Idaho Transportation Department (ITD) provides this information, including geographic data and any associated metadata "as is" without warranty of any kind, including but not limited to its completeness, fitness for a particular use, or accuracy of content, positional or otherwise. It is the sole responsibility of the user to determine the accuracy or usability of any information, data or metadata for his or her own purposes. In no event shall ITD have any liability whatsoever for damages of any kind arising out of the use of or reliance on the information, geographic data or metadata. In providing this information, data, metadata, or access to such, ITD assumes no obligation to assist the user in the use of such or in the development, use, or maintenance of any applications applied to or associated with such.

Legend

Status

UNIMPROVED

LriProgramRoads2\_25\_2016

PayWeight

0.5

2

LriProgramRoads2\_25\_2016

Surface

EARTH

GRAVEL

F

G-1

G-2

J

LRS\_Routes02\_25\_2016

GNIS - Summit/Peak

airport

cemetery

range

island

Section

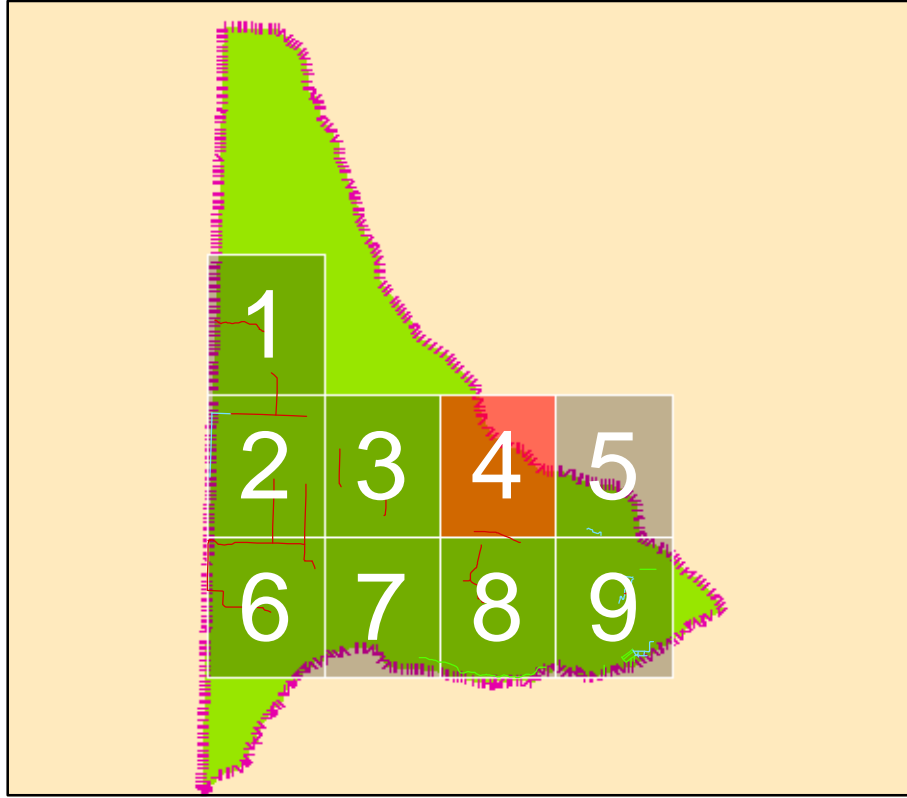
Waterbody

River

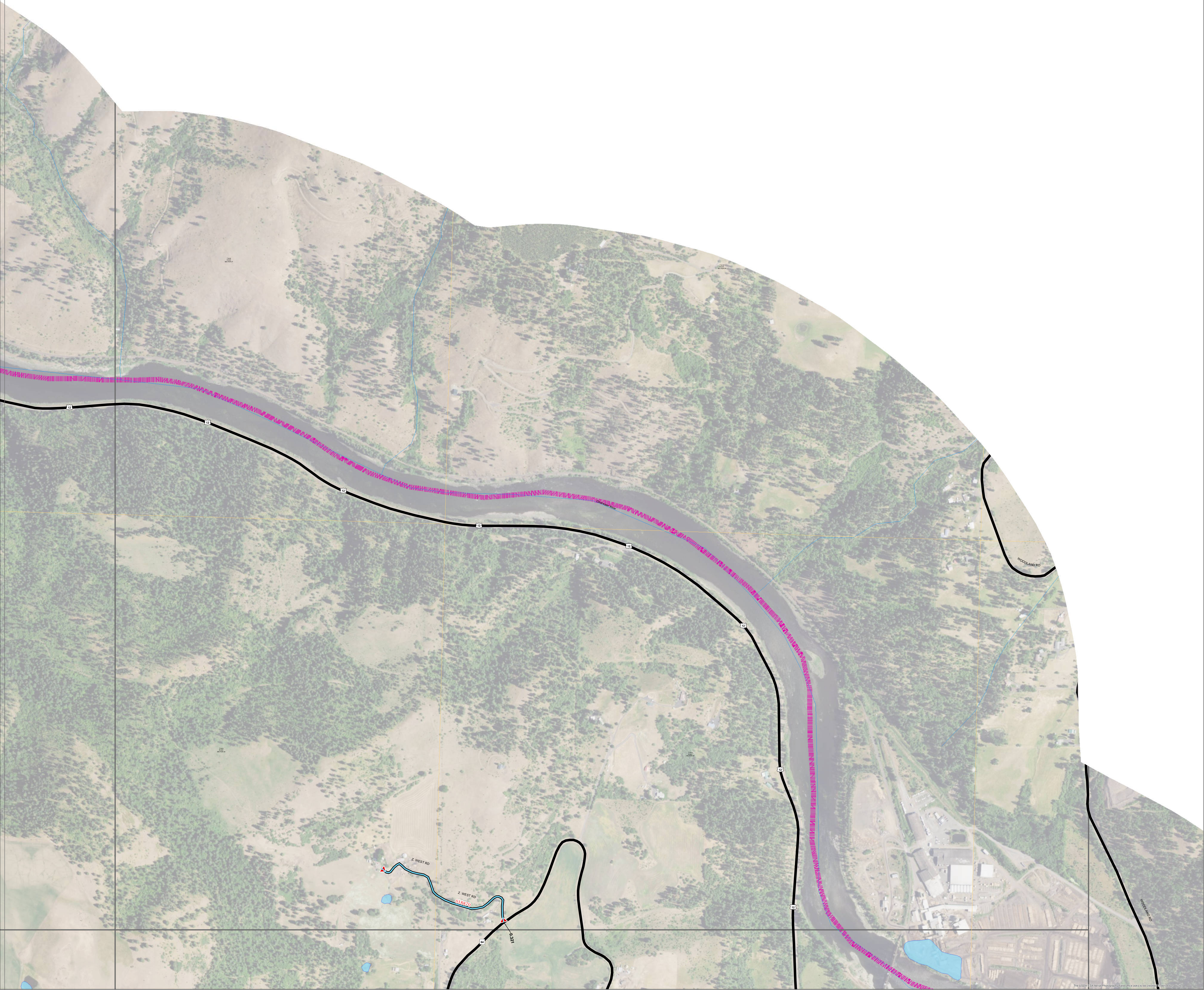
KamiahHdGeoMilesGrid

KamiahHwyDistrictBoundary

CitiesCurrent







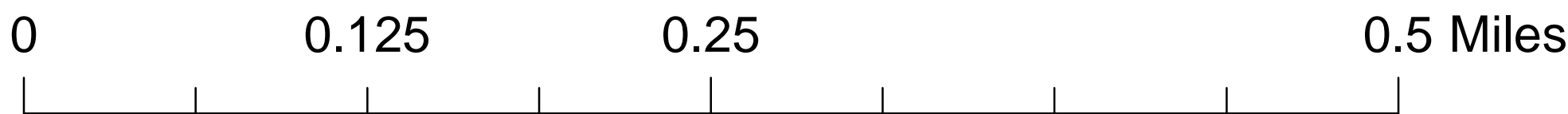
2015  
IDAHO TRANSPORTATION DEPARTMENT  
SEGMENT CODE AND GEO MILEAGE  
MAP

KAMIAH  
HIGHWAY  
DISTRICT  
LEWIS COUNTY  
IDAHO

Date: 3/2/2016

Local Road System Revised October 1, 2015

Path: W:\LocalRds\2012GeoMiles\MileageCK\LewisCounty\KamiahHdGeoMiles.mxd



Scale: 1:3,524

Coordinate System: NAD 1983 Idaho TM  
Projection: Transverse Mercator  
Datum: North American 1983  
False Easting: 2,500,000.0000  
False Northing: 1,200,000.0000  
Central Meridian: -114.0000  
Scale Factor: 0.9996  
Latitude Of Origin: 42.0000  
Units: Meter

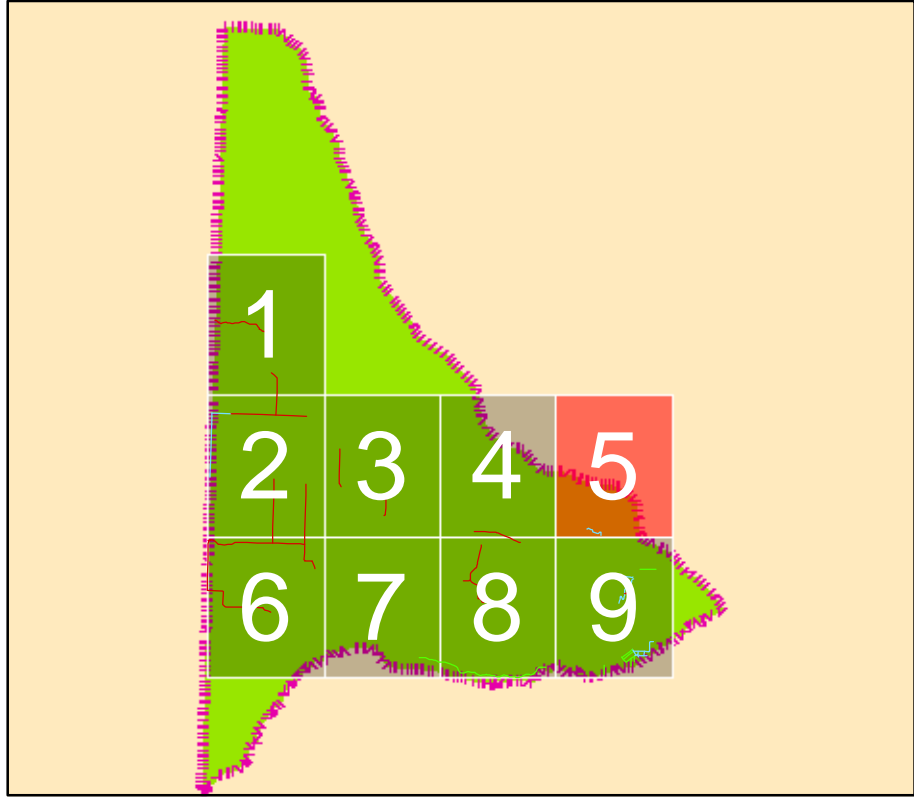
PREPARED BY THE  
IDAHO TRANSPORTATION DEPARTMENT  
IN COOPERATION WITH THE  
U.S. DEPARTMENT OF TRANSPORTATION  
FEDERAL HIGHWAY ADMINISTRATION



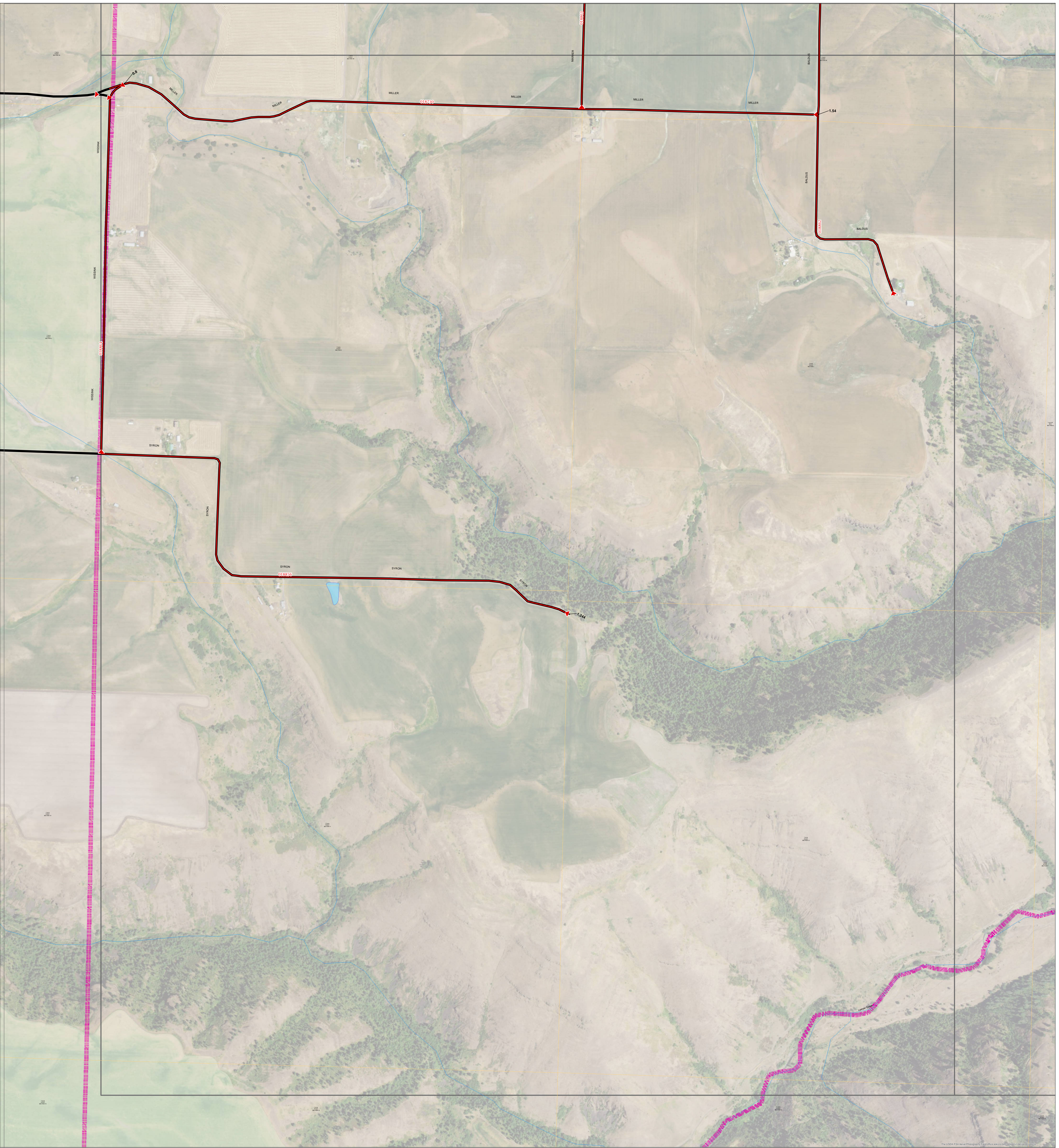
The Idaho Transportation Department (ITD) provides this information, including geographic data and any associated metadata "as is" without warranty of any kind, including but not limited to its completeness, fitness for a particular use, or accuracy of content, positional or otherwise. It is the sole responsibility of the user to determine the accuracy or usability of any information, data or metadata for his or her own purposes. In no event shall ITD have any liability whatsoever for damages of any kind arising out of the use of or reliance on the information, geographic data or metadata. In providing this information, data, metadata, or access to such, ITD assumes no obligation to assist the user in the use of such or in the development, use, or maintenance of any applications applied to or associated with such.

Legend

Status	Surface		
UNIMPROVED	EARTH	+	cemetery
LriProgramRoads2_25_2016	GRAVEL	▲	range
PayWeight	F	*	island
0.5	G-1	□	Section
2	G-2	■	Waterbody
LriProgramRoads2_25_2016	J	■	River
	LRS_Routes02_25_2016	■	KamiahHdGeoMilesGrid
	GNIS - Summit/Peak	■	KamiahHwyDistrictBoundary
	airport	■	CitiesCurrent







2015  
IDAHO TRANSPORTATION DEPARTMENT  
SEGMENT CODE AND GEO MILEAGE  
MAP

KAMIAH  
HIGHWAY  
DISTRICT  
LEWIS COUNTY  
IDAHO

Date: 3/2/2016

Local Road System Revised October 1, 2015

Path: W:\LocalRds\2012GeoMiles\MileageCK\LewisCounty\KamiahHdGeoMiles.mxd

0 0.125 0.25 0.5 Miles

Scale: 1:3,524

Coordinate System: NAD 1983 Idaho TM  
Projection: Transverse Mercator  
Datum: North American 1983  
False Easting: 2,500,000.0000  
False Northing: 1,200,000.0000  
Central Meridian: -114.0000  
Scale Factor: 0.9996  
Latitude Of Origin: 42.0000  
Units: Meter

PREPARED BY THE  
IDAHO TRANSPORTATION DEPARTMENT  
IN COOPERATION WITH THE  
U.S. DEPARTMENT OF TRANSPORTATION  
FEDERAL HIGHWAY ADMINISTRATION



The Idaho Transportation Department (ITD) provides this information, including geographic data and any associated metadata "as is" without warranty of any kind, including but not limited to its completeness, fitness for a particular use, or accuracy of content, positional or otherwise. It is the sole responsibility of the user to determine the accuracy or usability of any information, data or metadata for his or her own purposes. In no event shall ITD have any liability whatsoever for damages of any kind arising out of the use of or reliance on the information, geographic data or metadata. In providing this information, data, metadata, or access to such, ITD assumes no obligation to assist the user in the use of such or in the development, use, or maintenance of any applications applied to or associated with such.

Legend

Status

UNIMPROVED

LriProgramRoads2\_25\_2016

PayWeight

0.5

2

LriProgramRoads2\_25\_2016

Surface

EARTH

GRAVEL

F

G-1

G-2

J

LRS\_Routes02\_25\_2016

GNIS - Summit/Peak

airport

cemetery

range

island

Section

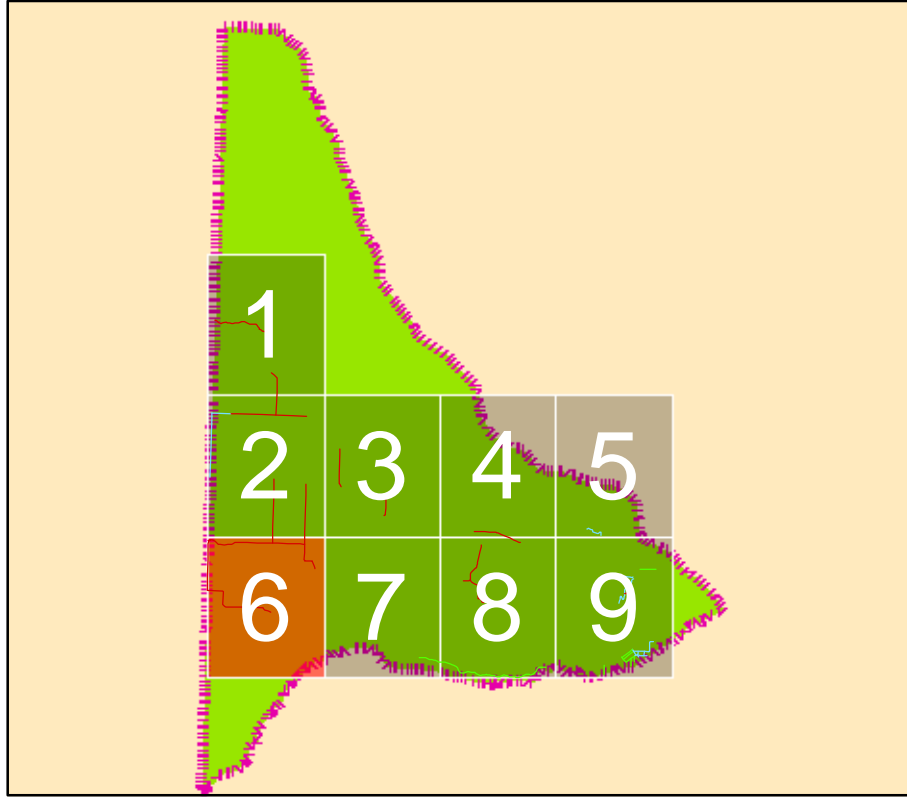
Waterbody

River

KamiahHdGeoMilesGrid

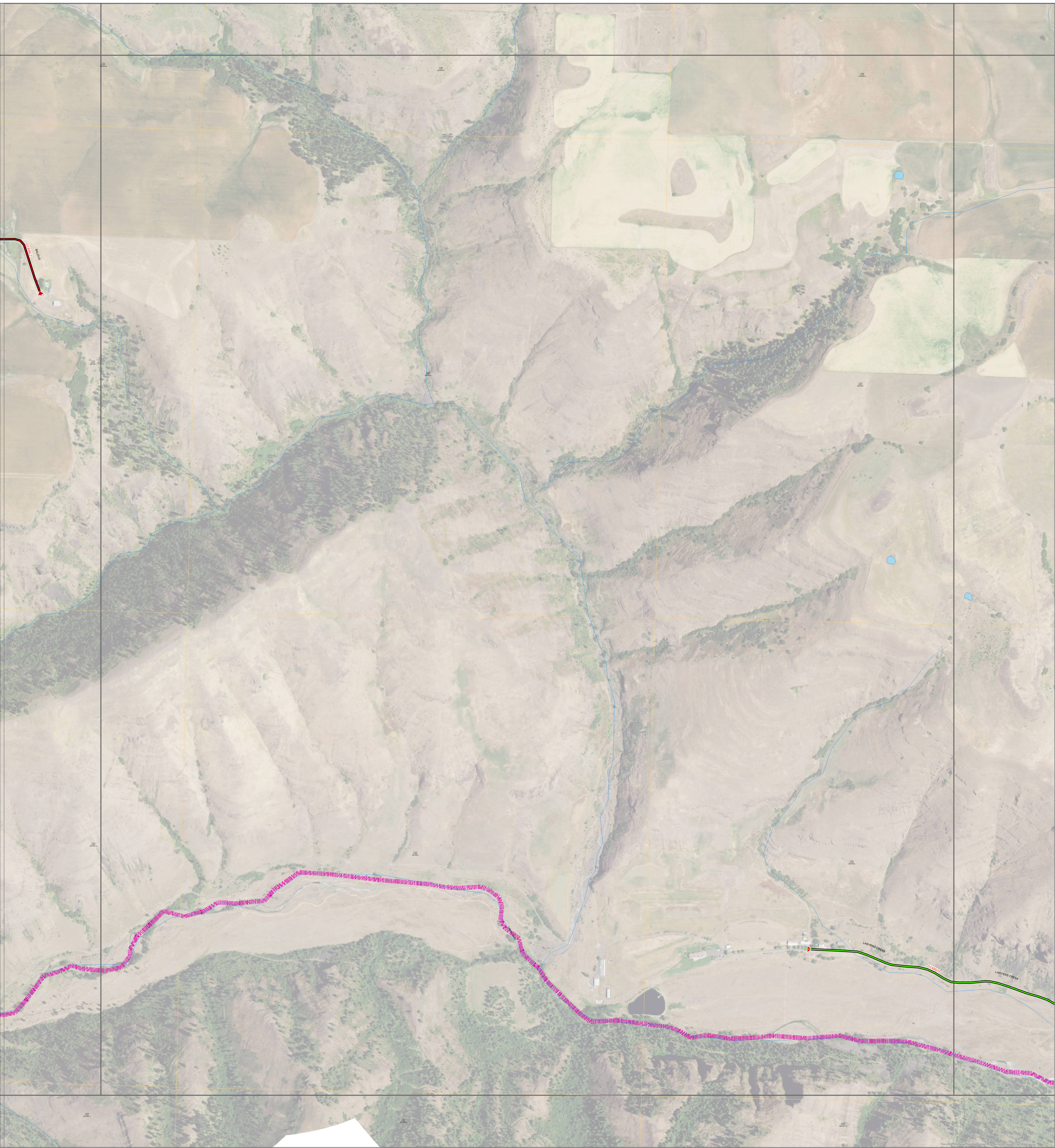
KamiahHwyDistrictBoundary

CitiesCurrent



KAMIAH HD 6 OF 9





2015  
IDAHO TRANSPORTATION DEPARTMENT  
SEGMENT CODE AND GEO MILEAGE  
MAP

KAMIAH  
HIGHWAY  
DISTRICT  
LEWIS COUNTY  
IDAHO

Date: 3/2/2016

Local Road System Revised October 1, 2015

Path: W:\LocalRds\2012GeoMiles\MileageCK\LewisCounty\KamiahHdGeoMiles.mxd

0 0.125 0.25 0.5 Miles

Scale: 1:3,524

Coordinate System: NAD 1983 Idaho TM  
Projection: Transverse Mercator  
Datum: North American 1983  
False Easting: 2,500,000.0000  
False Northing: 1,200,000.0000  
Central Meridian: -114.0000  
Scale Factor: 0.9996  
Latitude Of Origin: 42.0000  
Units: Meter

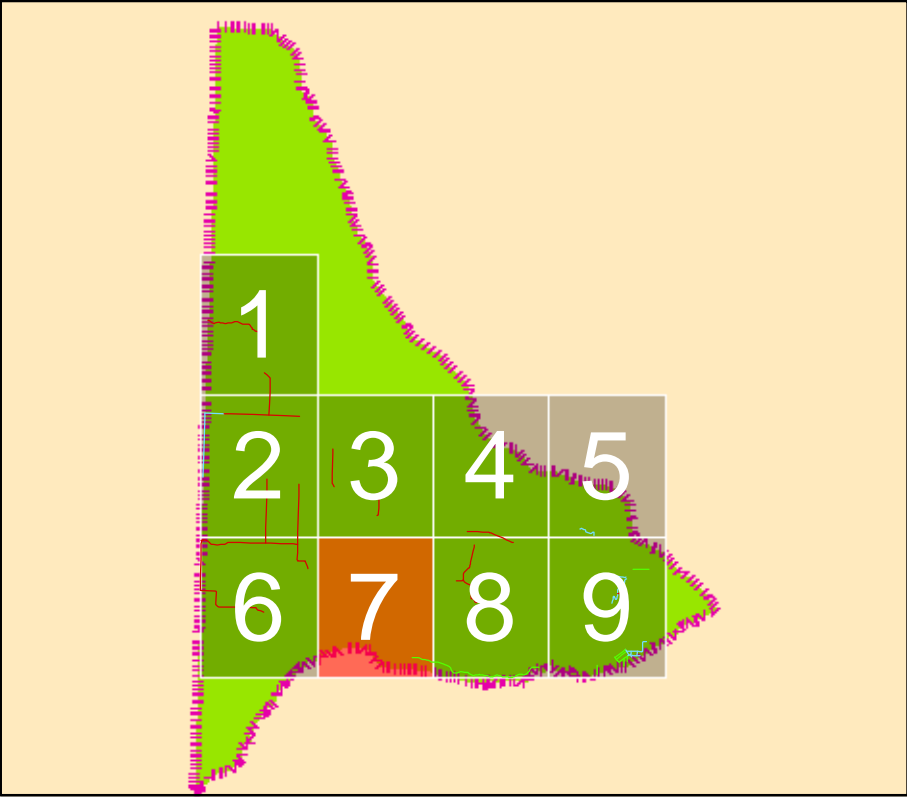
PREPARED BY THE  
IDAHO TRANSPORTATION DEPARTMENT  
IN COOPERATION WITH THE  
U.S. DEPARTMENT OF TRANSPORTATION  
FEDERAL HIGHWAY ADMINISTRATION



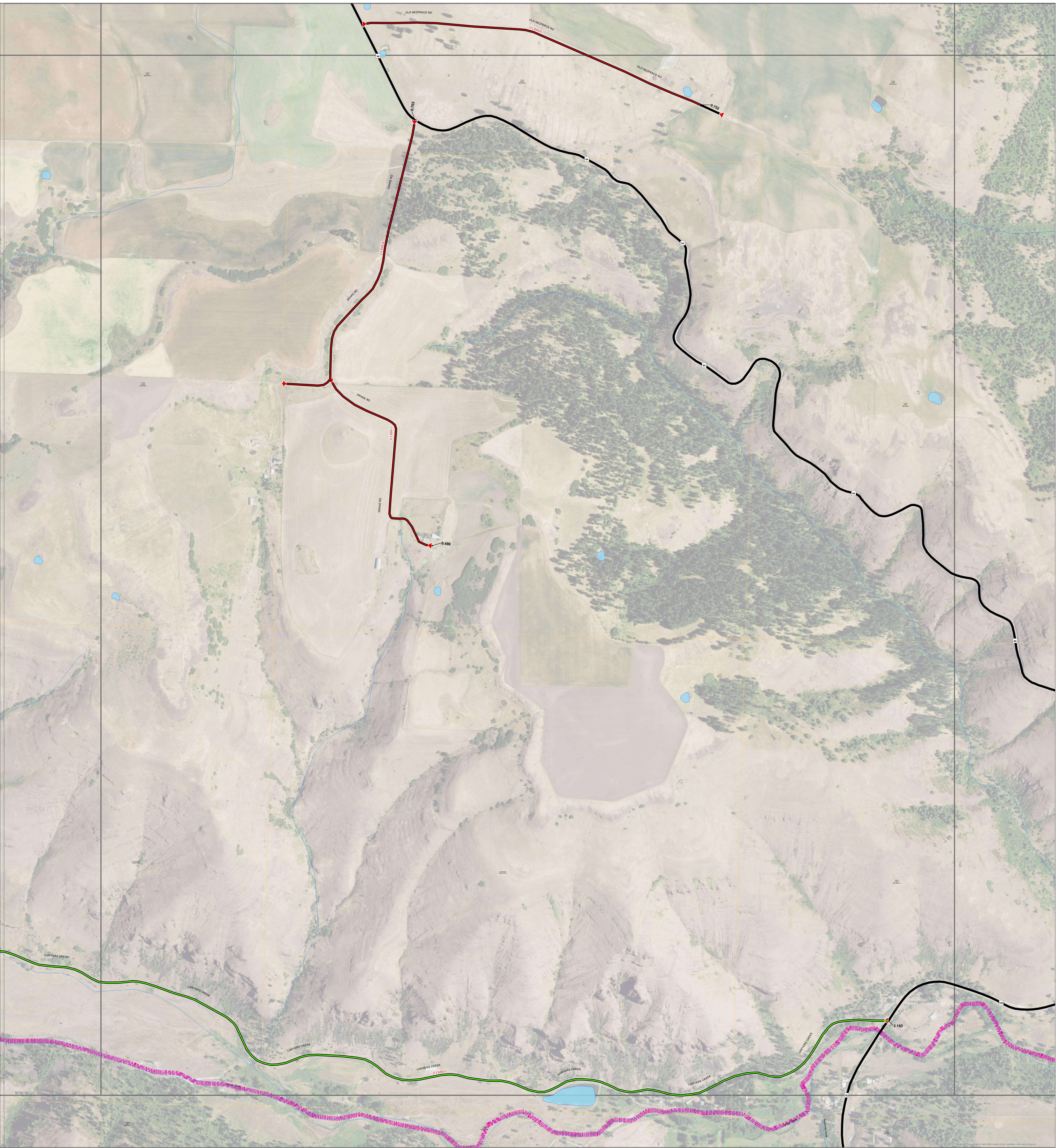
The Idaho Transportation Department (ITD) provides this information, including geographic data and any associated metadata "as is" without warranty of any kind, including but not limited to its completeness, fitness for a particular use, or accuracy of content, positional or otherwise. It is the sole responsibility of the user to determine the accuracy or usability of any information, data or metadata for his or her own purposes. In no event shall ITD have any liability whatsoever for damages of any kind arising out of the use of or reliance on the information, geographic data or metadata. In providing this information, data, metadata, or access to such, ITD assumes no obligation to assist the user in the use of such or in the development, use, or maintenance of any applications applied to or associated with such.

Legend

Status	Surface	
UNIMPROVED	EARTH	cemetery
LriProgramRoads2_25_2016	GRAVEL	range
PayWeight	F	island
0.5	G-1	Section
2	G-2	Waterbody
LriProgramRoads2_25_2016	J	River
	LRS_Routes02_25_2016	KamiahHdGeoMilesGrid
	GNIS - Summit/Peak	KamiahHwyDistrictBoundary
	airport	CitiesCurrent







2015  
IDAHO TRANSPORTATION DEPARTMENT  
SEGMENT CODE AND GEO MILEAGE  
MAP

KAMIAH  
HIGHWAY  
DISTRICT  
LEWIS COUNTY  
IDAHO

Date: 3/2/2016

Local Road System Revised October 1, 2015

Path: W:\LocalRds\2012GeoMiles\MileageCK\LewisCounty\KamiahHdGeoMiles.mxd

0 0.125 0.25 0.5 Miles

Scale: 1:3,524

Coordinate System: NAD 1983 Idaho TM  
Projection: Transverse Mercator  
Datum: North American 1983  
False Easting: 2,500,000.0000  
False Northing: 1,200,000.0000  
Central Meridian: -114.0000  
Scale Factor: 0.9996  
Latitude Of Origin: 42.0000  
Units: Meter

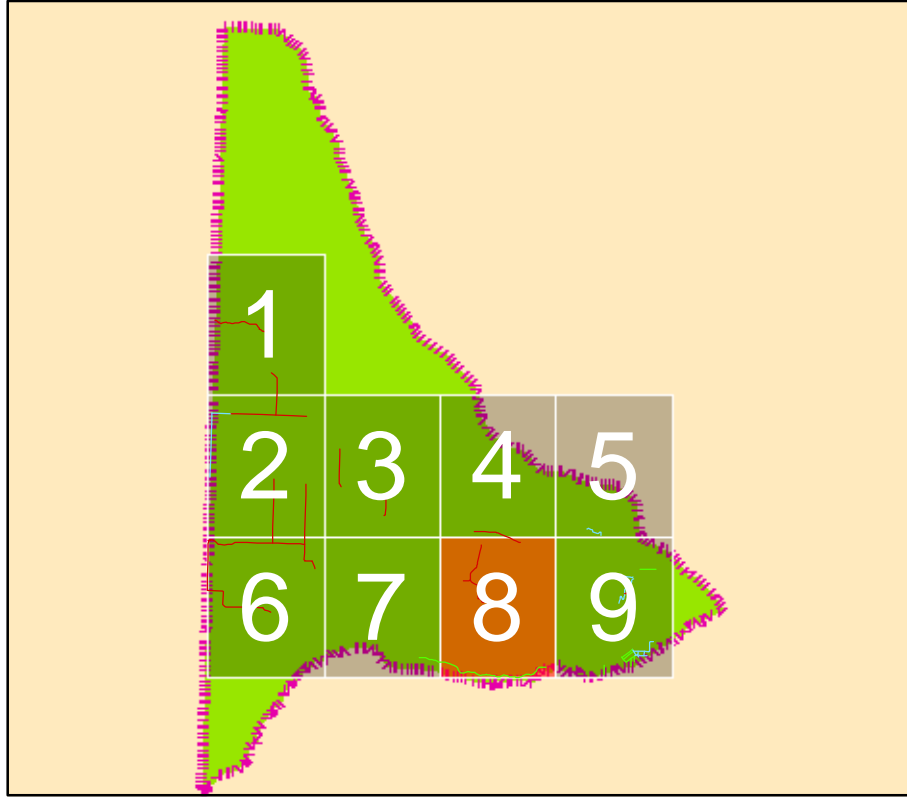
PREPARED BY THE  
IDAHO TRANSPORTATION DEPARTMENT  
IN COOPERATION WITH THE  
U.S. DEPARTMENT OF TRANSPORTATION  
FEDERAL HIGHWAY ADMINISTRATION



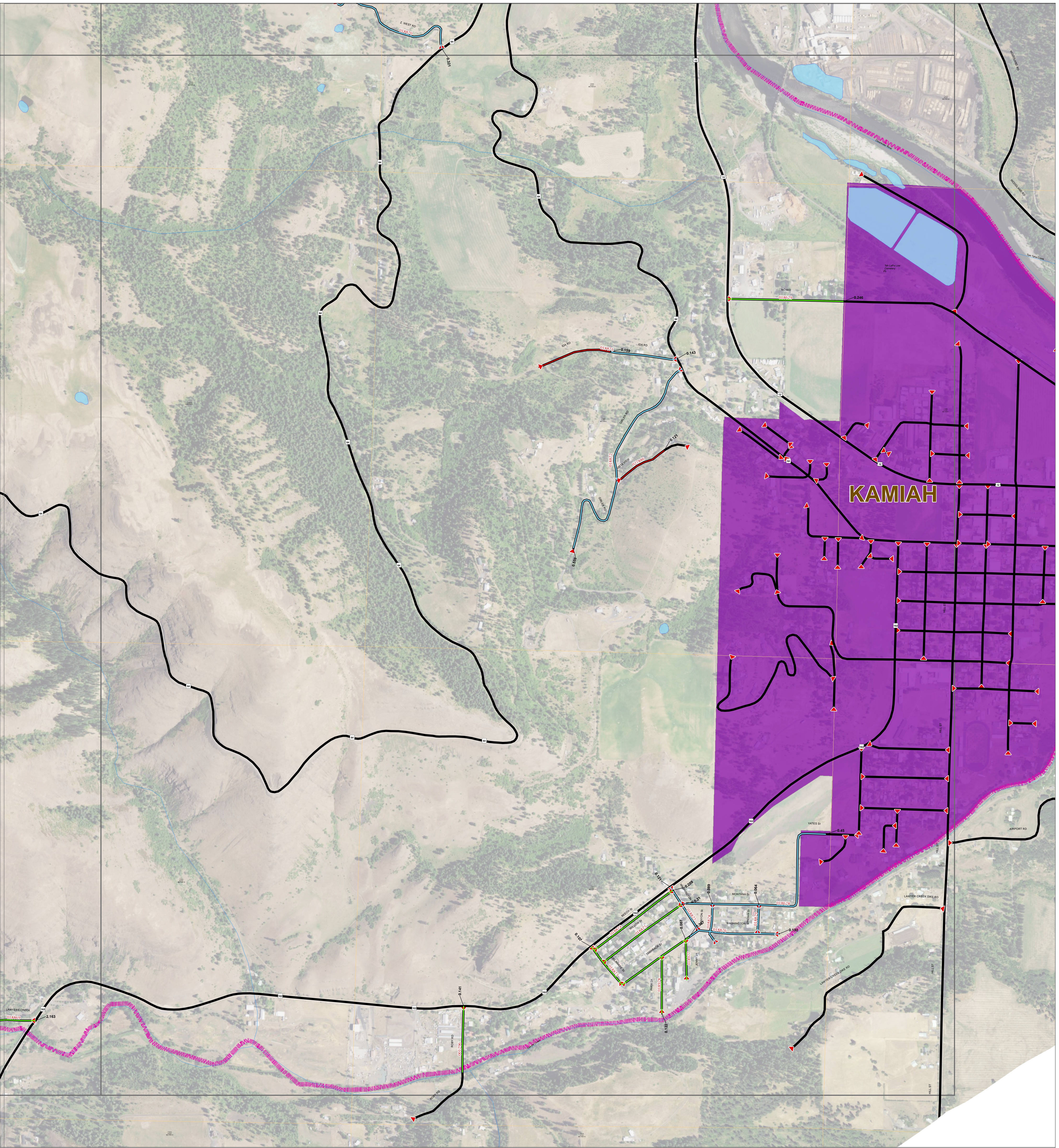
The Idaho Transportation Department (ITD) provides this information, including geographic data and any associated metadata "as is" without warranty of any kind, including but not limited to its completeness, fitness for a particular use, or accuracy of content, positional or otherwise. It is the sole responsibility of the user to determine the accuracy or usability of any information, data or metadata for his or her own purposes. In no event shall ITD have any liability whatsoever for damages of any kind arising out of the use of or reliance on the information, geographic data or metadata. In providing this information, data, metadata, or access to such, ITD assumes no obligation to assist the user in the use of such or in the development, use, or maintenance of any applications applied to or associated with such.

Legend

Status	Surface		
UNIMPROVED	EARTH	+	cemetery
LriProgramRoads2_25_2016	GRAVEL	▲	range
PayWeight	F	*	island
0.5	G-1	Section	
2	G-2	Waterbody	
LriProgramRoads2_25_2016	J	River	
	LRS_Routes02_25_2016	KamiahHdGeoMilesGrid	
	GNIS - Summit/Peak	KamiahHwyDistrictBoundary	
	airport	CitiesCurrent	







2015  
IDAHO TRANSPORTATION DEPARTMENT  
SEGMENT CODE AND GEO MILEAGE  
MAP

KAMIAH  
HIGHWAY  
DISTRICT  
LEWIS COUNTY  
IDAHO

Date: 3/2/2016

Local Road System Revised October 1, 2015

Path: W:\LocalRds\2012GeoMiles\MileageCK\LewisCounty\KamiahHdGeoMiles.mxd

0 0.125 0.25 0.5 Miles

Scale: 1:3,524

Coordinate System: NAD 1983 Idaho TM  
Projection: Transverse Mercator  
Datum: North American 1983  
False Easting: 2,500,000.0000  
False Northing: 1,200,000.0000  
Central Meridian: -114.0000  
Scale Factor: 0.9996  
Latitude Of Origin: 42.0000  
Units: Meter

PREPARED BY THE  
IDAHO TRANSPORTATION DEPARTMENT  
IN COOPERATION WITH THE  
U.S. DEPARTMENT OF TRANSPORTATION  
FEDERAL HIGHWAY ADMINISTRATION

The Idaho Transportation Department (ITD) provides this information, including geographic data and any associated metadata "as is" without warranty of any kind, including but not limited to its completeness, fitness for a particular use, or accuracy of content, positional or otherwise. It is the sole responsibility of the user to determine the accuracy or usability of any information, data or metadata for his or her own purposes. In no event shall ITD have any liability whatsoever for damages of any kind arising out of the use of or reliance on the information, geographic data or metadata. In providing this information, data, metadata, or access to such, ITD assumes no obligation to assist the user in the use of such or in the development, use, or maintenance of any applications applied to or associated with such.

Legend

Status

UNIMPROVED

LriProgramRoads2\_25\_2016

PayWeight

0.5

2

LriProgramRoads2\_25\_2016

Surface

EARTH

GRAVEL

F

G-1

G-2

J

LRS\_Routes02\_25\_2016

GNIS - Summit/Peak

airport

cemetery

range

island

Section

Waterbody

River

KamiahHdGeoMilesGrid

KamiahHwyDistrictBoundary

CitiesCurrent

