



**DISTRICT 4 JUNIPER REST AREA  
EASTBOUND AND WESTBOUND REPAIRS**

December 14, 2016  
Requisition #: D00108

**ADDENDUM #1**

The following information consists of changes, additions, omissions, deletions, or clarifications to the above mentioned project. All other information will remain the same.

Contractor/Business Name: \_\_\_\_\_

**Question 1**

What type of door closer will be required?

**Answer 1**

See attached specification.

**Question 2**

What type of heat tape is required for the rain gutters?

**Answer 2**

Provide heat tape that is rated for industrial use.

**Question 3**

Should we upgrade or fix the two "up-lights" that are mounted in the column in the foyer?

**Answer 3**

You can upgrade or retrofit the current "up-lighting" in the foyer in both buildings – total quantity four (4).

**Question 4**

Should we change the wall pack and emergency lighting fixtures?

**Answer 4**

Yes, upgrade or retrofit the following lights in both buildings.

- Emergency lighting in the foyer – total quantity four (4)
  - Emergency lighting in the mechanical room – total quantity two (2)
  - Emergency lighting in the handicap restrooms – total quantity four (4)
-

### Question 5

Do you want all flush valves replaced on urinals and toilets?

#### Answer 5

Yes, there are a total of eight (8) urinals and twenty – eight (28) toilets.

### Question 6

Do you want any loose ceiling tiles replaced as well?

#### Answer 6

Yes, replace any tiles that are loose, damaged or missing.

### Question 7

The exterior building lights look current. Do they need replaced?

#### Answer 7

No these were upgraded not long ago. Strike the 13<sup>th</sup> bullet point from Section 9 Scope of Work (page 7).

~~Replace exterior lights on the front of each building, two on each side and one above the main entry door (10 lights total). These lights are currently connected to a single sensor to automatically come on in low light or darkness.~~

### Question 8

We are wondering if there are a set of blueprints available for our use, to help us with scales and square footages.

#### Answer 8

See attached floor plans.

### Question 9

I see the 60 – business day completion, is there an anticipated date for the NTP or start for this work? We need to know if it is expected that work will take place during the winter months, or if some of it can wait until spring?

#### Answer 9

Notice to Proceed will be given once the contract has been signed and all items in Section 8 Pre-Construction Meeting have been submitted and approved. Work will take place during the winter months.

### Question 10

Can you provide clarification on Section 9 bullet point 12? What is defined as “each area”?

#### Answer 10

Strike the last sentence of the 12<sup>th</sup> bullet point from Section 9 Scope of Work (page 7). It has been determined that this is not a requirement.

~~A minimum of one light in each area will need to automatically come on in case of a power failure (emergency light).~~

### Question 11

The scope states to replace the light fixtures. Does this mean that retrofitting the fixtures will not be allowed?

#### Answer 11

Replacement or retrofitting of lighting fixtures will be allowed.

## Standard Specifications for the Juniper Rest Area

### Entrance door/vestibule Hardware:

Kawneer Brand; offset pulls/ push bars, on interior, push bars with lockable latches on exit doors only

### Restroom Door Hardware:

Pulls, Rockwood 105 X 70B US32D

Push Plate, 70B 3 ½ X 15 US32D

Deadlock, Falcon D271 10-087 2 ¾-BS 626

### Door Closers:

Hydraulic, LCN 4040 PA

### Paint:

Interior: 2 coats, Egg Shell Latex Enamel, color TBD upon award/submittal

Doors: 2 coats, Interior Alkyd Gloss Enamel, color TBD upon award/submittal

Floor Paint: Carboguard 890 Epoxy or approved equal Color, 8286N "Burntside"

### Sinks and Faucets in Men's and Women's Rest rooms:

Bradley Model EXD-2N dual station wash fountain, ADA compliant, color TBD upon award/submittal

Provide with Sloan Optima ETP-600 >5 gpm vandal resistant spray head

Family Assist room sinks: Kohler K-2032, 20" X 18" with Sloan Optima 600 faucet, and Lav Shield exposed plumbing cover

### Toilet Flush Valves:

Sloan Royal Optima, 1.6 gallon concealed sensor operated valves, with override button

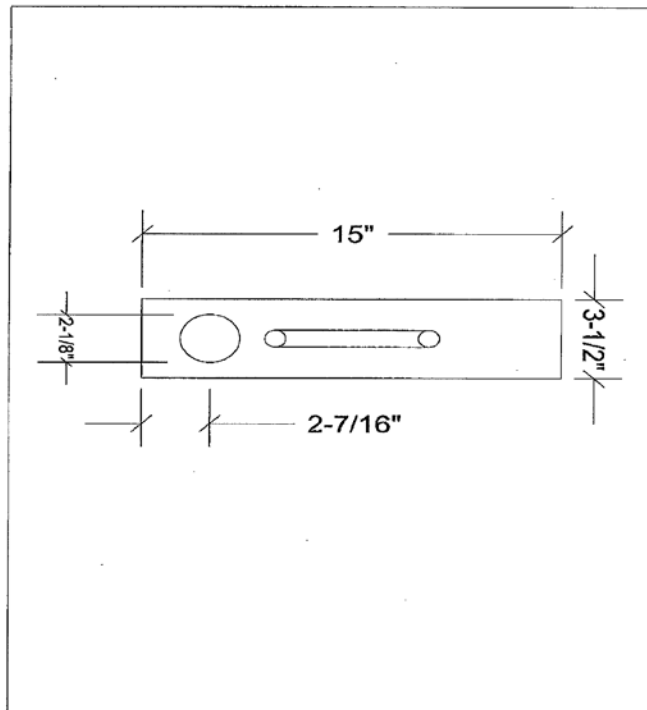
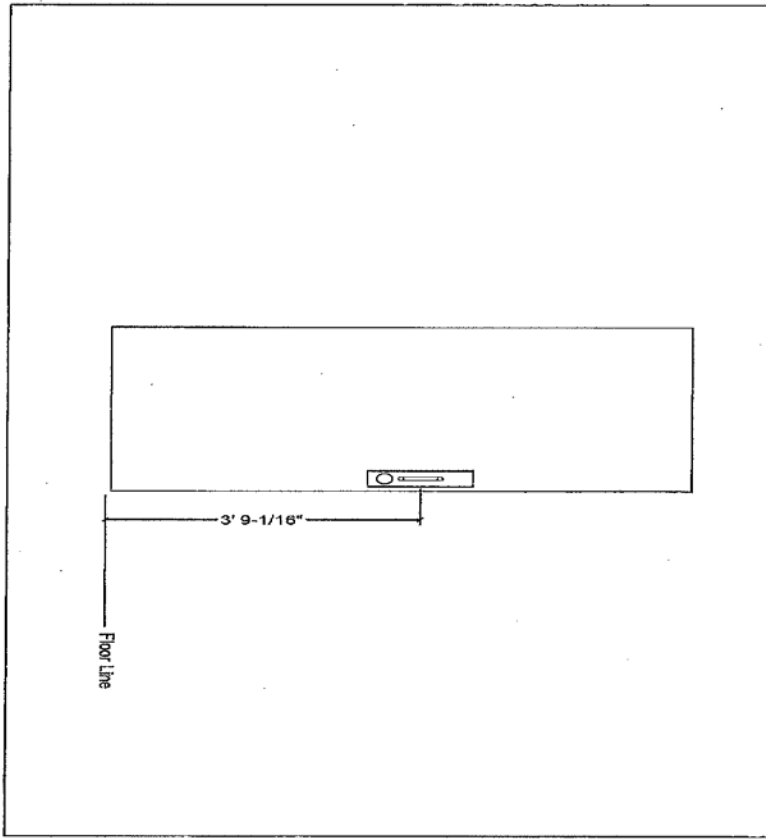
### Urinal Flush Valves:

Sloan Regal 195-1.0 ES-S, 1.0 gallon

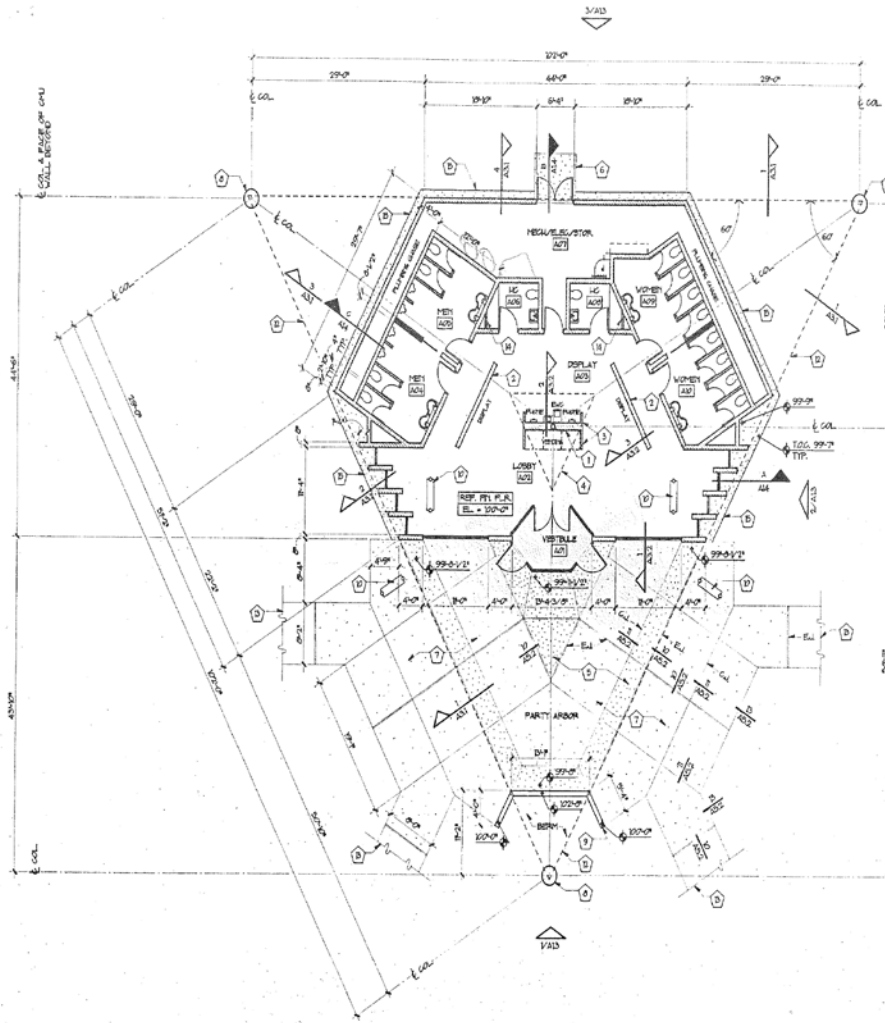
### Bathroom mirrors:

Bobrick B-2906, 24" X 36", stainless steel mirrors

# LOCKSET RETROFIT MEASUREMENTS



# REFERENCE FLOOR PLAN



**GENERAL NOTES: (SEE DRAWING 011)**

1. REFER TO DEPT. OF TRANSPORTATION SITE PLAN FOR BUILDING LOCATION AND ORIENTATION. DEPT. OF TRANSPORTATION SHALL PROVIDE DOCUMENT FOR ALL EXISTING UTILITIES, UTILITIES, ETC. UNDER SEPARATE SP. DOCUMENTATION FOR COMPLETE SCOPE OF WORK FOR SP-2. SHALL BE IN ACCORD WITH MECHANICAL, ELECTRICAL, AND STRUCTURAL CONSULTANTS.
2. REFER TO TECH SPEC FOR ALL CON. AND DT. STANDARD SPEC. FOR WALLS AND OTHER CON.
3. DIMENSIONS ARE TO FACE OF CHL UNLESS NOTED OTHERWISE.
4. EXTERIOR WALLS ARE 8" CHL W/ PERITE INSULATION FILL.
5. INTERIOR WALLS ARE 8" CHL UNLESS OTHERWISE NOTED.
6. REFER TO DWG. 012 FOR ENLARGED FLOOR PLAN & INTERIOR SPECIFICATIONS.
7. REFER TO DWG. 042 FOR ENLARGED FINISH PLAN AND SPECIALTIES.
8. EXTERIOR WALL FINISH SHALL BE PER SPEC ON ALL CHL AND CONCRETE AREAS UNLT.
9. INTERIOR WALL FINISH SHALL BE PER SPEC ON ALL CHL AND CONCRETE AREAS UNLT.
10. REFER TO DWG. 042 FOR EXP. CONCT. & CONTROL JOINTS AT CONCT. FLOOR & WALL SLABS - REF. DWG. 042 FOR LOCATION OF INTERIOR JOINTS.

**KEYED NOTES: (SEE DRAWING 011)**

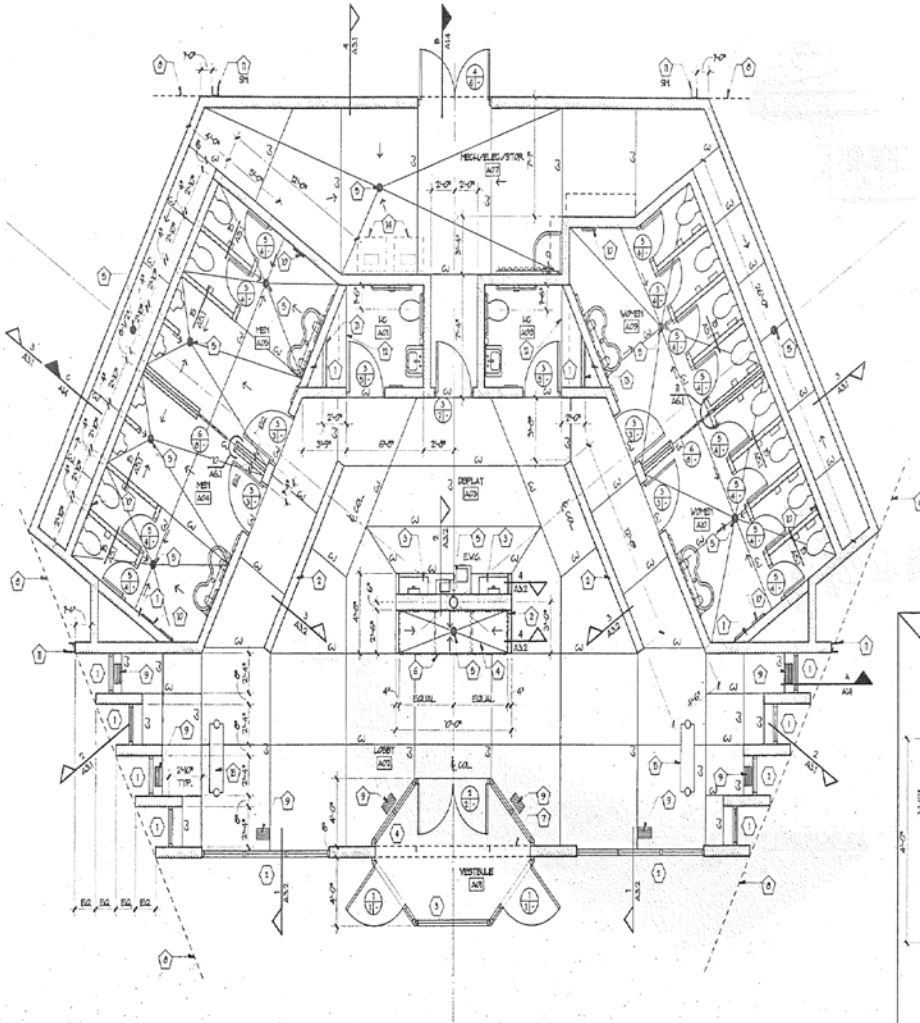
- 1) 8" CHL WALL 1200 HIGH - SLOPE AS INDICATED ELSEWHERE
- 2) 8" CHL WALL 7'-0" HIGH
- 3) 8" CHL WALL 6'-0" HIGH W/ CONG.
- 4) INDICATES LIGHT SHELF ABOVE REF. DWG. 041
- 5) INDICATES AT COLORED CONG. ACCENT PAVING - REF. DT. STANDARD SPEC. & COLOR SCHEDULE ITEM 821 ON DWG. 041
- 6) 7" X 6" X 4" CONG. APPROX W/ THICKENED EDGE
- 7) 4" CONG. PAVING THICK W/ THICKENED EDGE - REF. DT. STANDARD SPEC. & COLOR SCHEDULE ITEM 821 ON DWG. 041
- 8) CONG. COLUMN - REF. STRUCTURAL DRAWING
- 9) CONG. RETAINING WALL - REF. DETAIL DWG. 040 ALSO REF. MECH. & ELEC. DWG. 040
- 10) CONG. BEAM - REF. DRAWING 042 AND 043
- 11) NOT USED
- 12) DASHED LINE INDICATES ROOF OVERHANG
- 13) CONCRETE WALL - REF. DEPT. OF TRANSPORTATION SITE PLAN FOR CONTINUATION OF WORK UNDER SEPARATE SP.
- 14) METAL FLEDS AT 10' GC. TO AT ABOVE CEILING WITH GYPSUM BOARD & WALL TILE
- 15) PER DT. VERT. CONG. REIN. STRIP SLOPED AWAY FROM BLDG. PROTECT. TOOLS. 100' PER DT. 042 & 043 OFF SA CORNER OF BLDG. AS INDICATED.

**CONTRACTORS NOTE**

THIS SET OF DRAWINGS INDICATE ONE BUILDING. THE PROJECT IDENTIFIED AS SP-2 SHALL CONSIST OF ONE BUILDING AND NUMEROUS FINISH SHELTERS AS SHOWN ON I.D.T. SITE PLAN DRAWINGS.

<b>DESIGNER</b>	DESIGNED RKS	SCALES SHOWN ARE FOR 22" X 34" PRINTS ONLY	 	 <b>JHS</b> JENSEN • HAYES • SHROPSHIRE ARCHITECTS, P.A.	 <b>IDAHO</b> TRANSPORTATION DEPARTMENT DISTRICT 4 - SHOSHONE	FEDERAL AID PROJECT NO. IM-84-4(010)269 REGION 10 IDAHO	<b>PLAN</b> <b>JUNIPER REST AREA</b> <b>REFERENCE/DIMENSION</b> <b>FLOOR PLAN</b>	FORM CATALOG NO. ID-1766 COUNTY ONEIDA KEY NUMBER 3713 SHEET A1.1 3 of 25
<b>DESIGN CHECKED</b>	DESIGN CHECKED RKS	CADD FILE NO. ZJNFFLP						
<b>DETAILED</b>	DETAILED RKS	DRAWING DATE: NOVEMBER 1997						
<b>DWG. CHECKED</b>	DWG. CHECKED PHJ							

# ENLARGED FLOOR PLAN



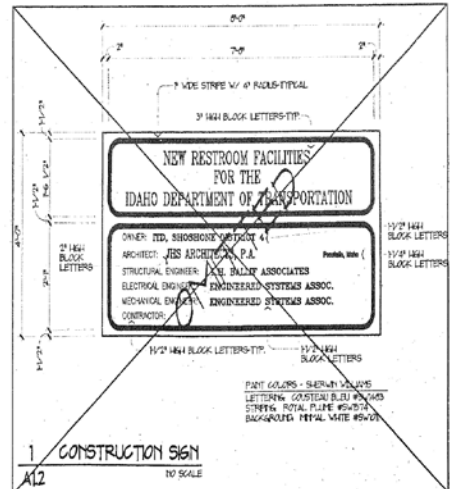
## GENERAL NOTES

1. ALL GYPSUM WALLS ARE TO STRUCK ABOVE WITH
2. TOILET PARTITION WALLS ARE STEEL TUBE W/ TILE OVER LATH & PLASTER PER DETAILS ON DWG A41
3. REF. DOOR TYPES DWG A41 FOR DOOR SIZES
4. CONC. FLOOR SLABS INDICATE SLOPED AREAS REF. DWG A42 FOR MORE INFO

## KEYED NOTES: (THIS DRAWING ONLY)

- 1) CHILL WALL TO 9'-0" AFF.
- 2) CHILL WALL TO HEIGHT INDICATED BY WALL SECTION
- 3) INDICATES PHONE SHELF PER ELEV. S/452
- 4) INDICATES PORTION OF FLOOR SLAB SLOPED TO DRAIN 1/8" PER FT.
- 5) FLOOR DRAIN - ALSO SHOW DASHED UPPER ELEV. WATER COOLERS - REF. MEGA DRAWINGS
- 6) INDICATES VENDING MACHINES - G/41
- 7) INDICATES WALL ABOVE
- 8) INDICATES ROOF OVERHANG ABOVE
- 9) FLOOR GRILL - REF. MEGA DRAWINGS
- 10) WALL APRIL - REF. MEGA DRAWINGS
- 11) RAIN DOWNSPOUT PER DETAIL G/42
- 12) SUSP. CEILING SELF OVER CHILL WALL REF. FINISH PLAN DTL. S/441
- 13) INT. STILES AT 1'0" O.C. TO 4' ABOVE G.L. W/ GYPSUM BO. & WALL TILE
- 14) CONC. AIR FLEUM PER DWG M1
- 15) CONC. BENCH REFER DRAWINGS A43 & A52

ENLARGED FLOOR PLAN  
1/4" = 1'-0"



There are no other changes.

End of Addendum One

This page **MUST BE SIGNED, DATED AND RETURNED** with your BID DOCUMENTS

Signature: \_\_\_\_\_ Date: \_\_\_\_\_

**I acknowledge receipt of this Addendum and its contents.**