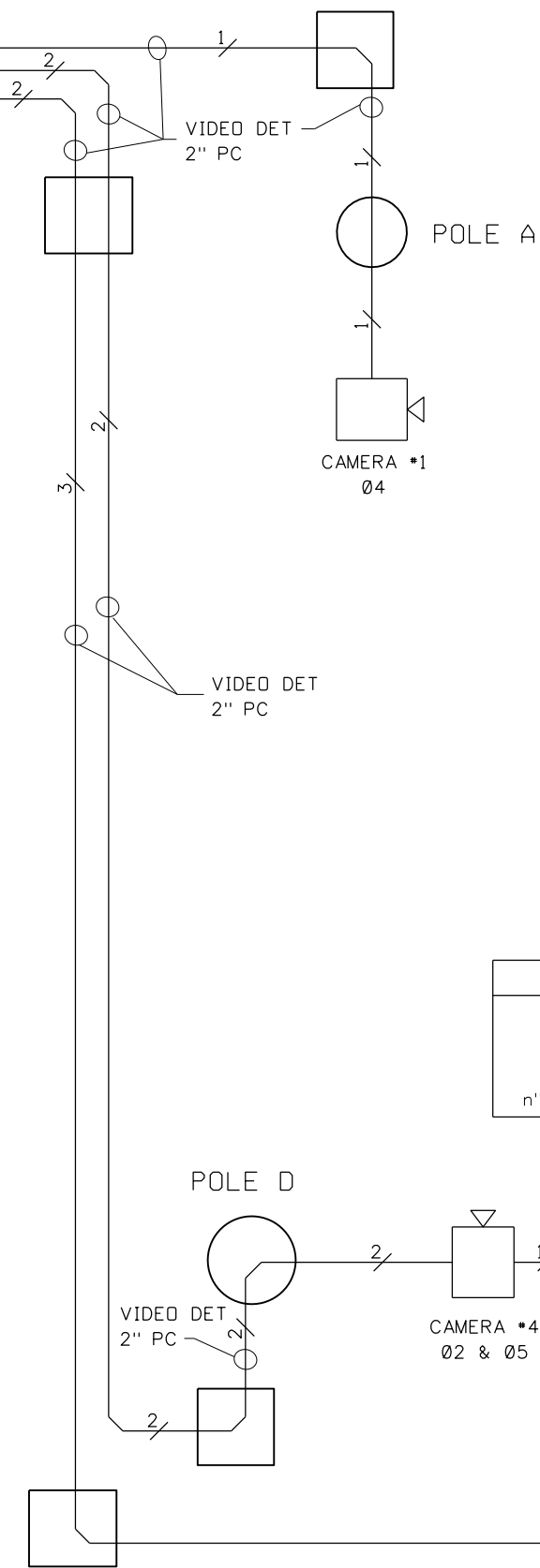


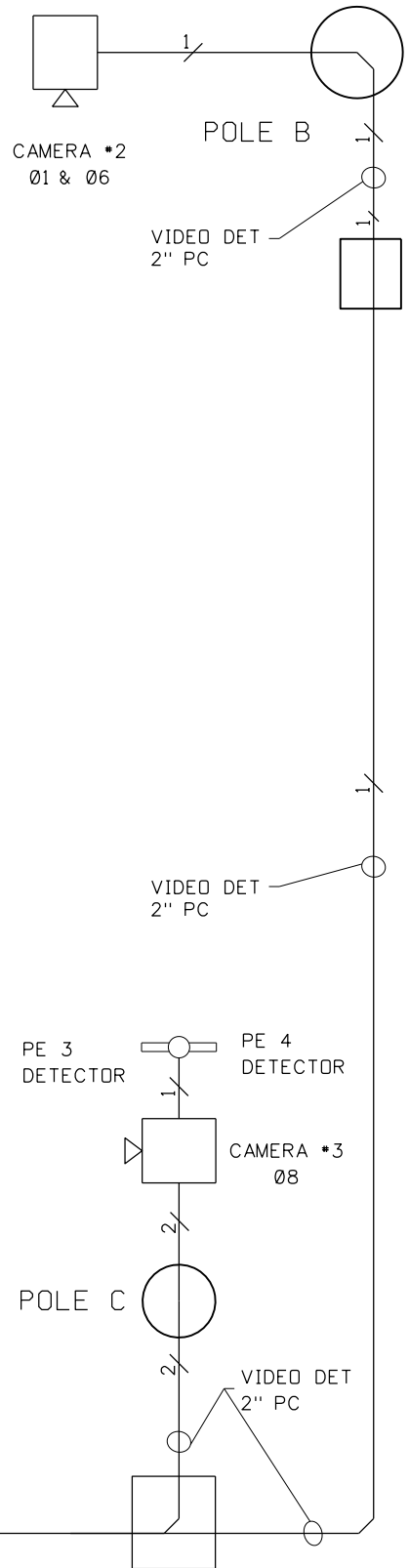
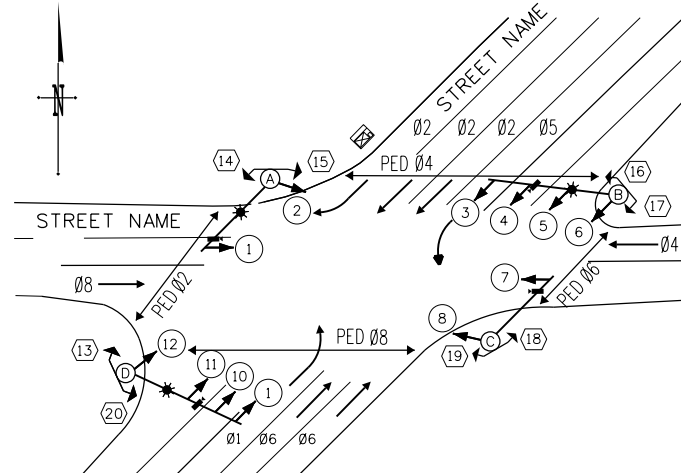
01 & 06		DC GND	X11	BARE
		PE 1	X12	YELLOW
02 & 05		PE 2	X13	BLUE
		26 VDC	X14	ORANGE

03 & 08		DC GND	X17	BARE
		PE 3	X18	YELLOW
04 & 07		PE 4	X19	BLUE
		26 VDC	X20	ORANGE



- NOTES:
1. USE 2" PC FROM EACH SIGNAL SIZE "PGC" JUNCTION BOX TO EACH SIGNAL POLE BASE.
 2. ALL NON-METALLIC RACEWAYS SHALL HAVE A #8 THWN GROUND CONDUCTOR.
 3. SEE SIGNAL INTERSECTION PLAN SHEET FOR LOCATION OF JUNCTION BOXES.
 4. VIDEO DETECTION CABLE SHALL BE TO THE MANUFACTURE'S SPECIFICATIONS. LEAVE 10' OF SPARE WIRE AT THE CABINET AND AT THE CAMERA LOCATIONS.

SYMBOLGY CHART	
	- Indicates multi-conductors or cable assemblies. (IMSA 19-1 or 20-1)
	- Indicates individual conductors or conductor breakout from cable or bundle.
	- Denotes number of conductors and/or cable(s) per conduit.
	n" PC - Denotes conduit size and type.



REVISIONS			
NO.	DATE	BY	DESCRIPTION

DESIGNED	
DESIGN CHECKED	
DETAILED	
DRAWING CHECKED	

SCALES SHOWN ARE FOR 11" X 17" PRINTS ONLY
CADD FILE NAME td85_0716.dgn
DRAWING DATE:

IDAHO
TRANSPORTATION
DEPARTMENT

PROJECT NO.

VIDEO DETECTION FIELD WIRING DIAGRAM
td85
FOUR OR LESS CAMERAS WITH EMERGENCY VEHICLE PRE-EMPT CONTROLLER CABINET LOCATED IN UPPER LEFT QUADRANT

English
COUNTY
KEY NUMBER
SHEET OF

NOT APPROVED
PRELIMINARY
FOR CONSTRUCTION