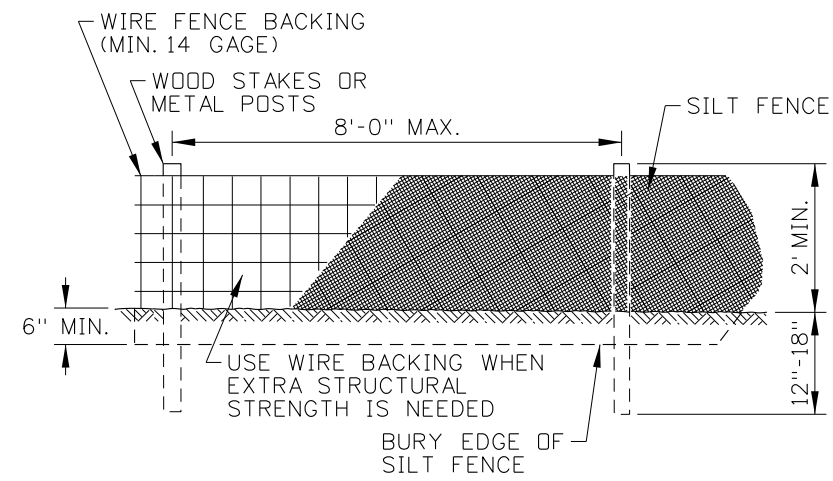
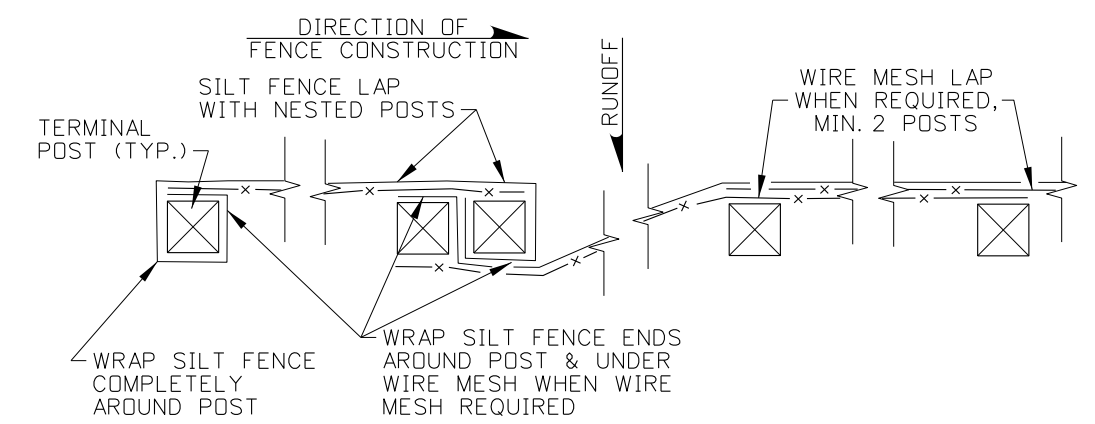


**SILT FENCE (NO WIRE BACKING)**



**SILT FENCE (WIRE BACKING)**



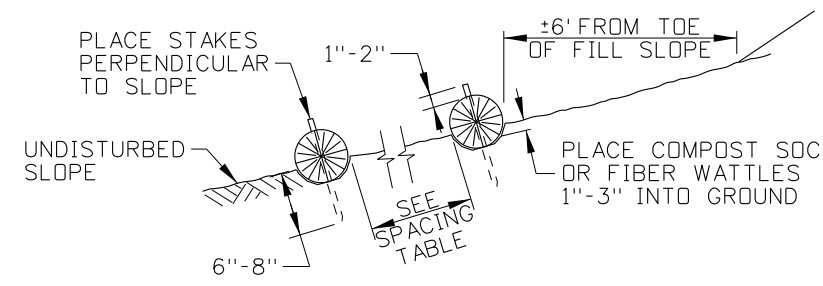
**SILT FENCE LAP DETAIL**

SLOPE	WATTLE SIZE			
	6"	9"	12"	20"
1:1	5 FT	10 FT	15 FT	20 FT
2:1	10 FT	20 FT	30 FT	40 FT
3:1	15 FT	30 FT	45 FT	60 FT
4:1 OR FLATTER	20 FT	40 FT	60 FT	80 FT

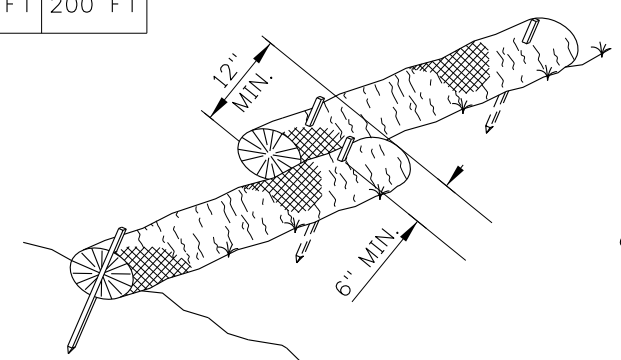
SLOPE	SOIL TYPE		
	SILTY	CLAYS	SANDY
1:1	50 FT	75 FT	100 FT
2:1	75 FT	100 FT	125 FT
4:1	100 FT	125 FT	150 FT
10:1 OR FLATTER	125 FT	150 FT	200 FT

**NOTES**

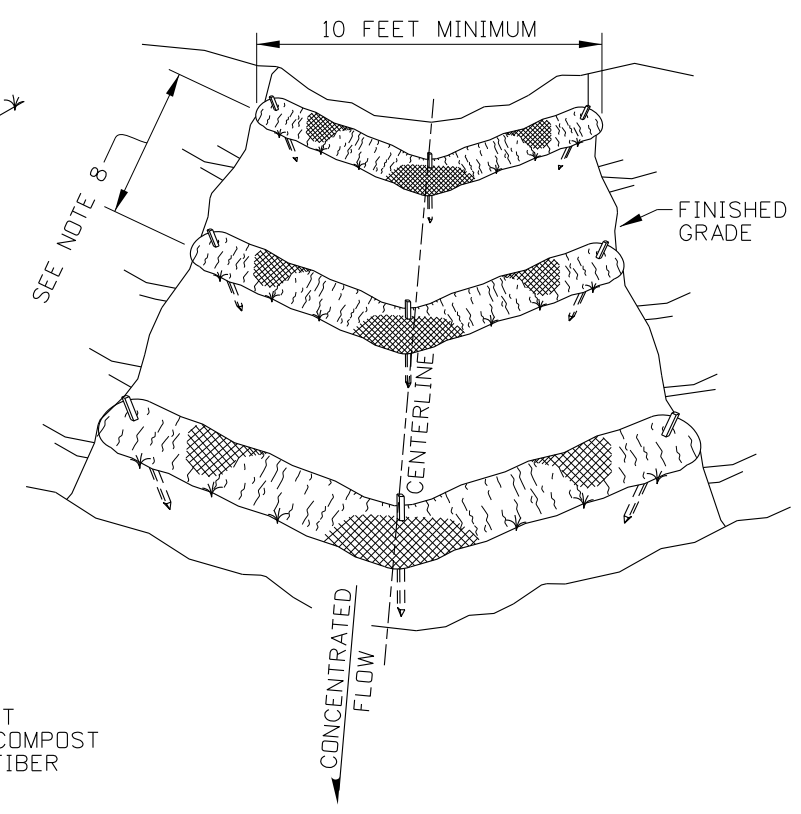
- SEE THE GENERAL NOTES FOR EROSION CONTROL STANDARD DRAWINGS ON 212-1.
- THE NEED FOR TEMPORARY SEDIMENT CONTROL DEVICES ARE DETERMINED BY SITE DESIGN. SPACE SILT FENCES, COMPOST SOCKS, AND FIBER WATTLES IN ACCORDANCE WITH THE SILT FENCE SPACING TABLE AND FIBER WATTLE & COMPOST SOCK SPACING TABLE.
- INSTALL TEMPORARY SEDIMENT CONTROL BARRIERS IN ACCORDANCE WITH MANUFACTURERS INSTRUCTIONS AND SPECIFICATIONS. THE DIMENSIONS SHOWN ARE GENERAL GUIDELINES.
- PLACE SEDIMENT BARRIERS TO FOLLOW THE SLOPE CONTOURS. USE EITHER METAL POSTS OR WOOD STAKES.
- ENSURE RUNOFF PASSES THROUGH THE SILT FENCE AND NOT AROUND THE FENCE.
- GROUND SILT FENCES WITH WIRE MESH IN ACCORDANCE WITH THE GROUNDING DETAIL SHOWN ON STANDARD DRAWING 610-1.
- EXTEND OR JOIN SILT FENCE USING SILT FENCE LAP WITH NESTED POSTS.
- SPACE CHECK DAMS ACCORDING TO THE HEIGHT OF THE DAM AND THE SLOPE OF THE CHANNEL SO THE BACKWATER FROM THE DOWNSTREAM DAM REACHES THE TOE OF THE UPSTREAM DAM.
- ON SLOPES, TURN THE ENDS OF EACH ROW OF COMPOST SOCKS AND FIBER WATTLES UPSLOPE TO PREVENT RUNOFF FROM FLOWING AROUND THE SOCK OR WATTLE.
- REMOVE SEDIMENT FROM THE UPSLOPE SIDE OF SILT FENCES, COMPOST SOCKS, AND FIBER WATTLES WHEN ACCUMULATION HAS REACHED 1/2 OF THE EFFECTIVE HEIGHT OF THE BARRIER.
- DRAWING NOT TO SCALE.



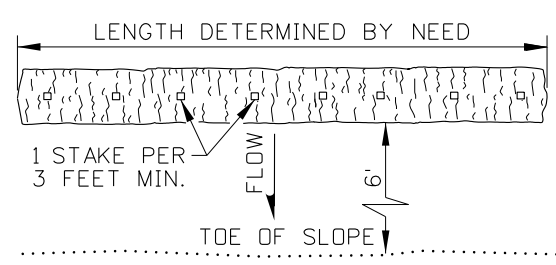
**COMPOST SOCK AND FIBER WATTLE SIDE VIEW**



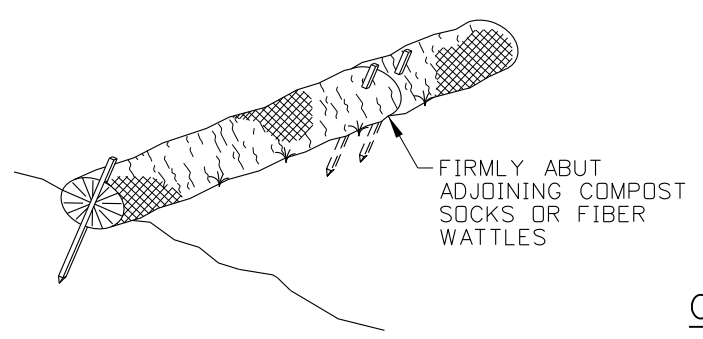
**COMPOST SOCK AND FIBER WATTLE OVERLAPPING DETAIL**



**COMPOST SOCK AND FIBER WATTLE TEMPORARY CHECK DAM DETAIL**



**COMPOST SOCK AND FIBER WATTLE PLAN VIEW**



**COMPOST SOCK AND FIBER WATTLE ABUTTING DETAIL**

NO.	DATE	BY	NO.	DATE	BY	NO.	DATE	BY
1	09-93	MSM	6	01-13	RDL			
2	12-94	MSM	7	03-21	TWF			
3	06-96	GFK						
4	10-10	KEH						
5	10-11	KEH						

SCALES SHOWN ARE FOR 11" X 17" PRINTS ONLY  
 CADD FILE NAME: 212-03\_0421.dgn  
 DRAWING DATE: APRIL, 1993

**IDAHO TRANSPORTATION DEPARTMENT**

BOISE IDAHO

ORIGINAL SIGNED BY: KEVIN SABLAN  
 DESIGN/TRAFFIC SERVICES ENGINEER

STANDARD DRAWING  
**TEMPORARY EROSION AND SEDIMENT CONTROL**  
 SILT FENCE, FIBER WATTLE, AND COMPOST SOCK  
 REQUIRES STD. DWG. 212-1

**English**  
 STANDARD DRAWING NO.  
**212-3**  
 SHEET 1 OF 1

ORIGINAL STORED AT: ITD, Headquarters 3311 West State Boise, Idaho