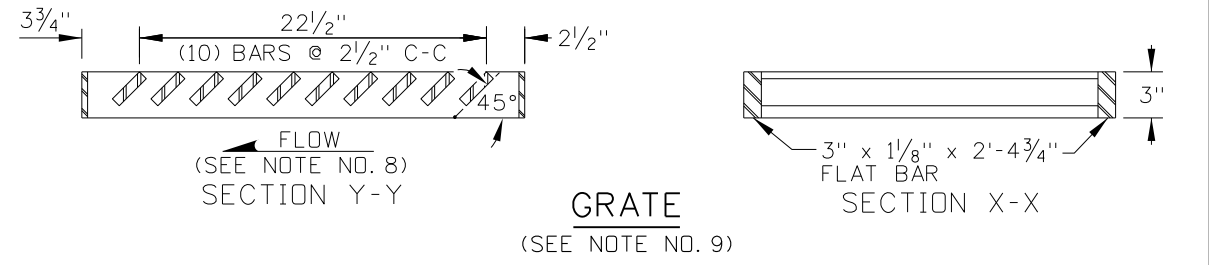
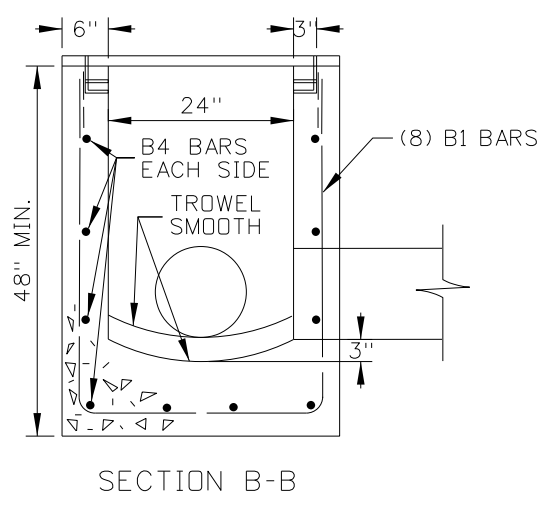


REINFORCING STEEL TABLE					
MARK	LOCATION	SIZE	BAR LENGTH	NO.	SKETCH
B1	VERT. IN WALLS & FLOOR (ADD LENGTH AS NEEDED)	4	VARIES	6	
B2	VERT. IN WALLS & FLOOR (ADD LENGTH AS NEEDED)	4	VARIES	4	
B3	WALLS (AS NEEDED)	4	86"	*	
B4	WALLS (AS NEEDED)	4	32"	*	
B5	WELDED TO: L's 3 1/2\" x 3\" x 3/8\" IN SIDE WALLS	4	12"	6	
* (4) MIN., ADD BARS AS NEEDED					



NOTES

1. PRECAST OR CAST-IN-PLACE THE INLET MEDIAN DRAIN. WHEN PRECAST, FABRICATE IN ACCORDANCE WITH ASTM C913 AND PROVIDE SHOP DRAWINGS FOR APPROVAL PRIOR TO INSTALLATION.
2. PROVIDE LONGER VERTICAL REINFORCING STEEL BARS WHEN THE INLET IS DEEPER THAN 48". SMOOTHLY CUT REINFORCING STEEL FOR PIPES.
3. PROVIDE STEEL ANGLES IN ACCORDANCE WITH ASTM A36. ENSURE THE FINISHED TOP OF CONCRETE IS EVEN WITH THE ANGLE AND GRATE SURFACE.
4. SIDE DRAFT UP TO 1" CAN BE PROVIDED TO EASE FORM REMOVAL.
5. FABRICATE OR CAST THE GRATES. WHEN FABRICATED, PROVIDE STEEL IN ACCORDANCE WITH ASTM A36. WHEN CAST, CAST IN ACCORDANCE WITH AASHTO M306 CLASS 35B GRAY IRON CASTINGS.
6. ORIENT THE GRADE SO THE FLAT BARS AT THE 45° ANGLE ARE POINTED DOWN IN THE DIRECTION OF THE FLOW.
7. ENSURE THE GRATE FULLY CONTACTS THE STEEL ANGLES.
8. PIPES CAN ENTER OR LEAVE THE INLET IN ANY DIRECTION. GROUT PIPE ENTRANCES AND EXITS.
9. ENSURE THE ELEVATION OF INLET PIPE IS HIGHER THAN THE ELEVATION OF THE OUTLET PIPE.
10. DRAWING NOT TO SCALE.

INLET MEDIAN DRAIN

REVISIONS							
NO.	DATE	BY	NO.	DATE	BY	NO.	DATE
1	05-07	MSM					
2	09-10	PLR					
3	02-21	PBH					

SCALES SHOWN ARE FOR 11" X 17" PRINTS ONLY
 CADD FILE NAME: 605-26_0421.dgn
 DRAWING DATE: DECEMBER, 2004

IDAHO TRANSPORTATION DEPARTMENT

BOISE IDAHO

ORIGINAL SIGNED BY: KEVIN SABLAN
 DESIGN/TRAFFIC SERVICES ENGINEER

STANDARD DRAWING
INLET MEDIAN DRAIN TYPE 9

English
 STANDARD DRAWING NO.
605-26
 SHEET 1 OF 1

ORIGINAL STORED AT: ITD, Headquarters 3311 West State Boise, Idaho