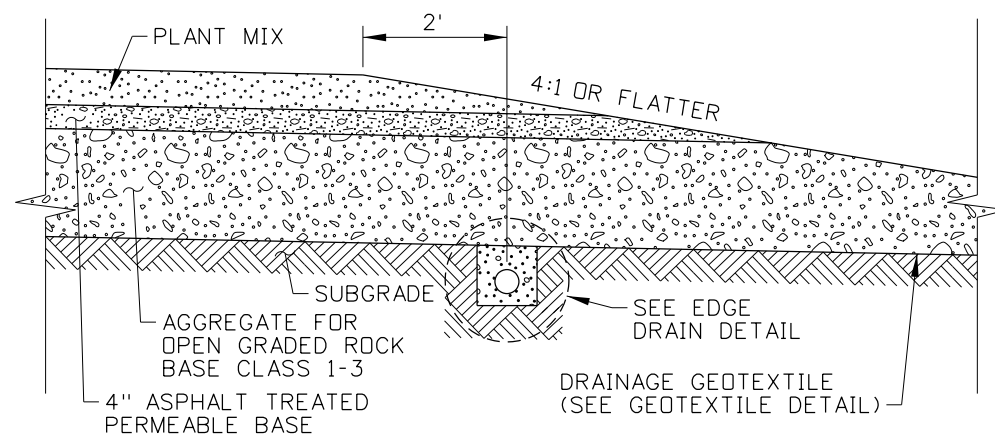
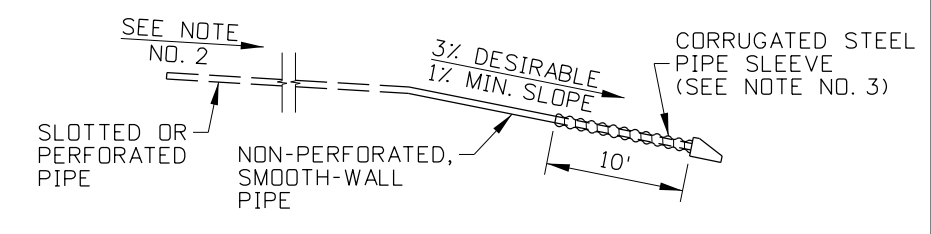


ROCK CAP

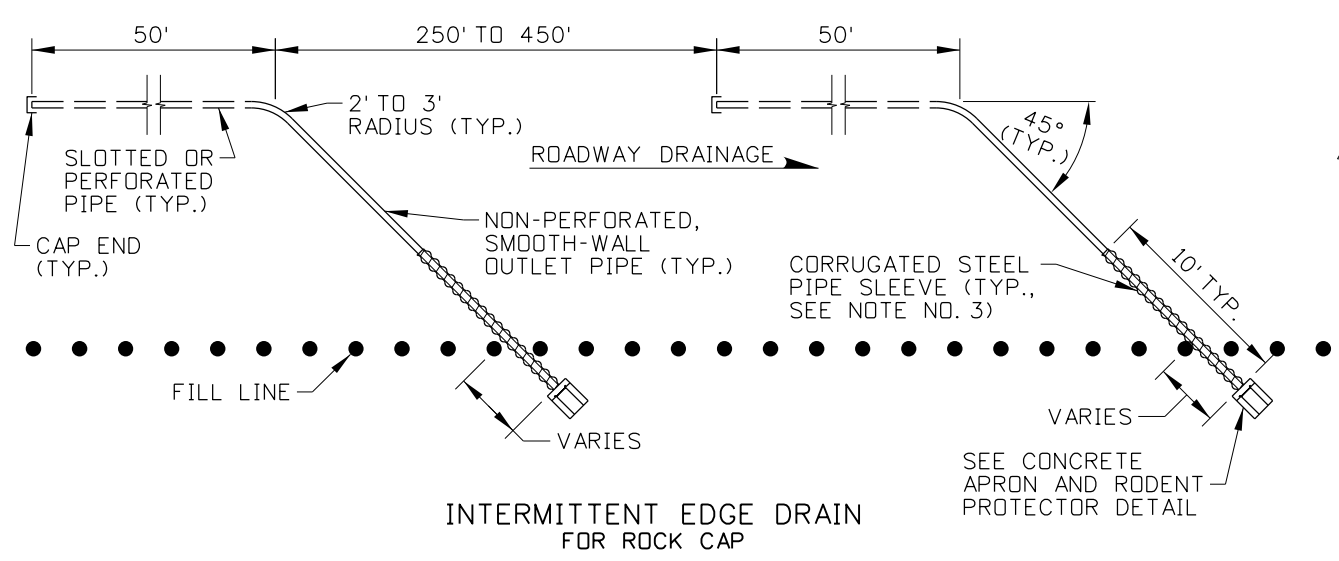


ASPHALT TREATED PERMEABLE BASE LAYER

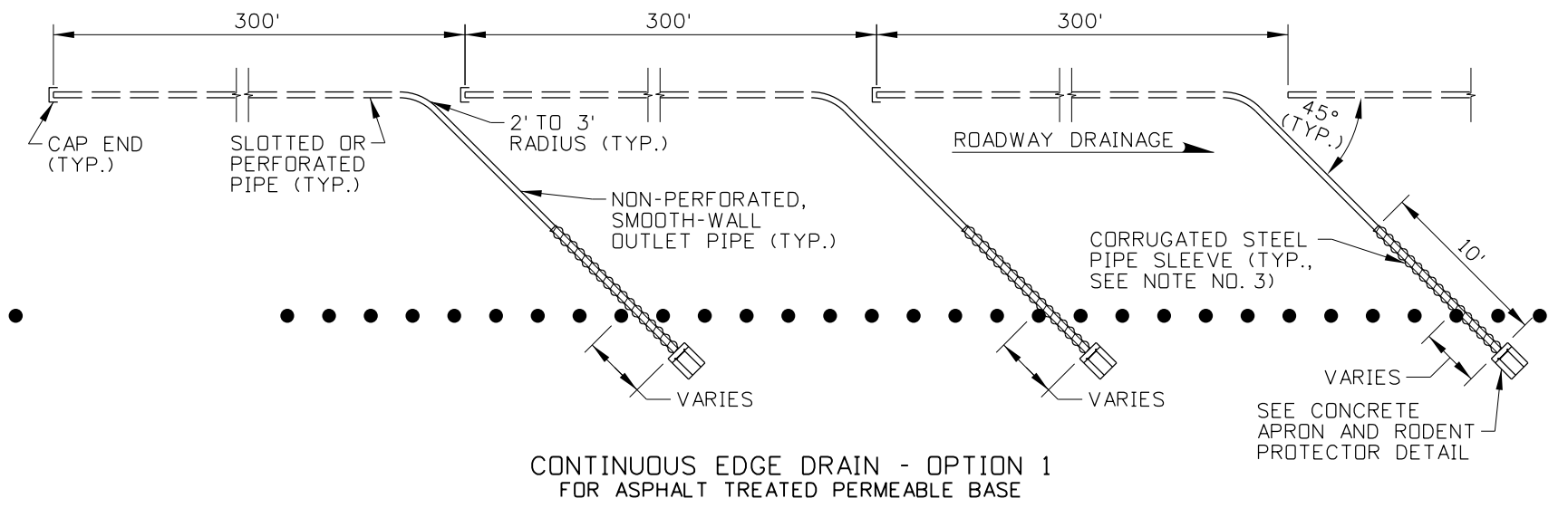


RURAL EDGE DRAIN PIPE PROFILE  
(SEE NOTE NO. 5)

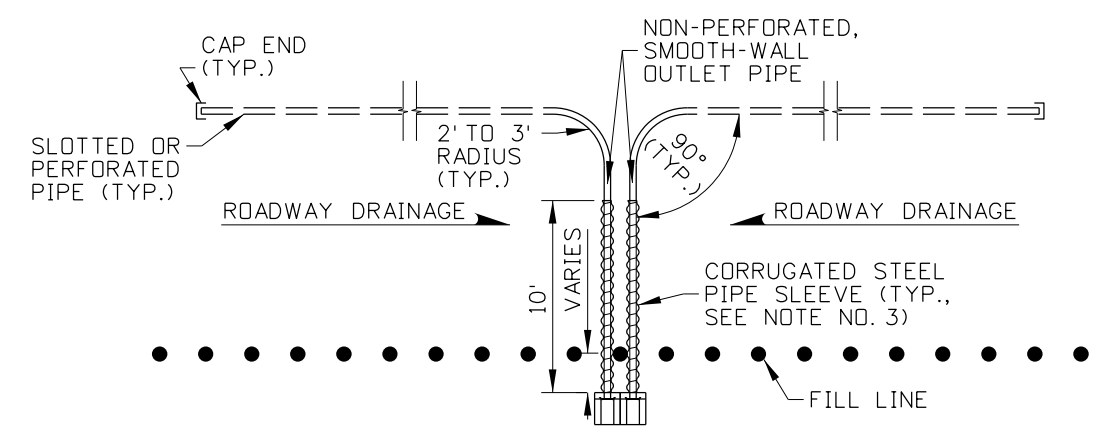
RURAL EDGE DRAIN PLACEMENT



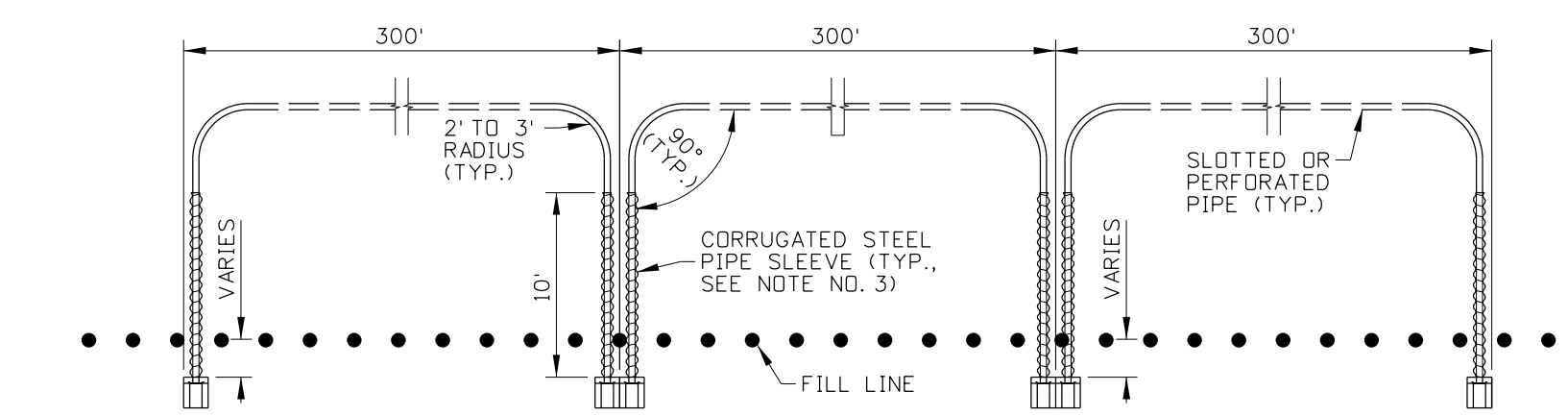
INTERMITTENT EDGE DRAIN FOR ROCK CAP



CONTINUOUS EDGE DRAIN - OPTION 1 FOR ASPHALT TREATED PERMEABLE BASE



EDGE DRAIN AT SAG VERTICAL CURVE FOR ROCK CAP OR ASPHALT TREATED PERMEABLE BASE (SEE NOTE NO. 4)




CONTINUOUS EDGE DRAIN - OPTION 2 FOR ASPHALT TREATED PERMEABLE BASE

RURAL EDGE DRAINS  
PLAN VIEW

REVISIONS							
NO.	DATE	BY	NO.	DATE	BY	NO.	DATE
1	02-22	RDL					

SCALES SHOWN ARE FOR 11" X 17" PRINTS ONLY  
CADD FILE NAME: 606-2\_0422.dgn  
DRAWING DATE: FEBRUARY, 2014

**IDAHO TRANSPORTATION DEPARTMENT**



BOISE IDAHO

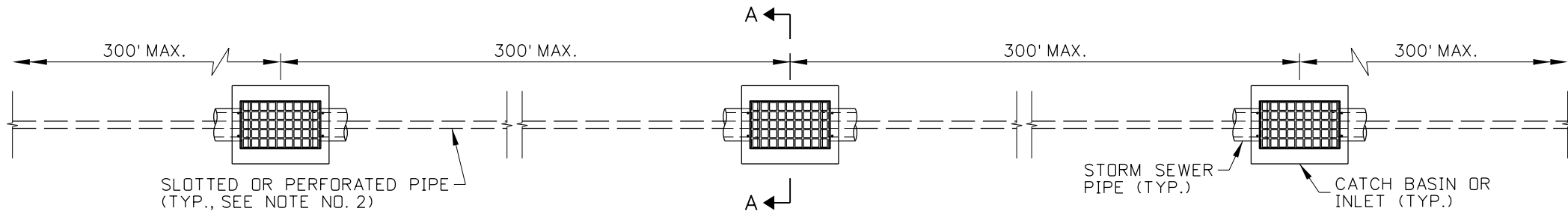
ORIGINAL SIGNED BY: KEVIN SABLAN  
DESIGN/TRAFFIC SERVICES ENGINEER

STANDARD DRAWING  
**EDGE DRAIN**

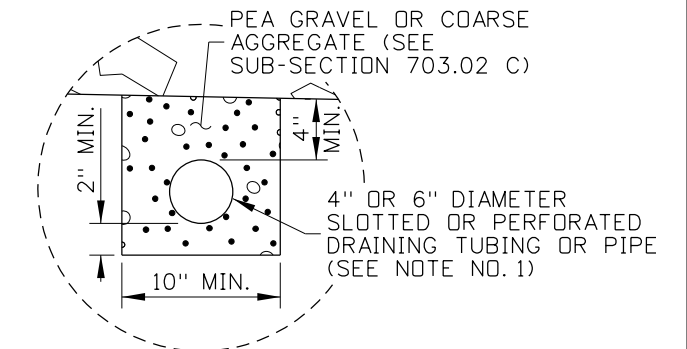
English  
STANDARD DRAWING NO.  
**606-2**  
SHEET 1 OF 2

ORIGINAL STORED AT: ITD, Headquarters 3311 West State Boise, Idaho

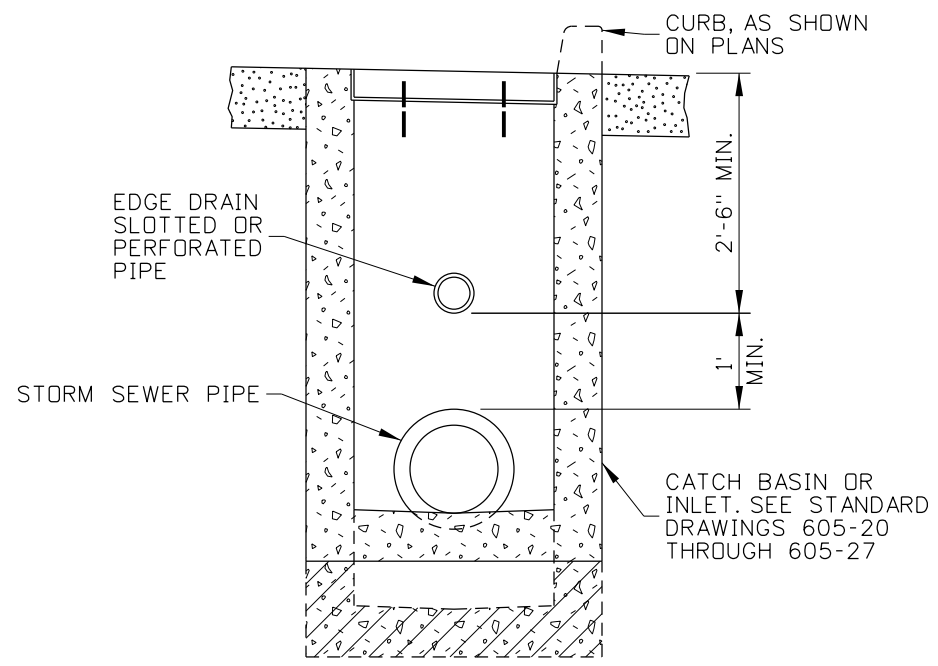
PROFESSIONAL ENGINEER  
LICENSED  
13683  
RYAN D. LANCASTER  
STATE OF IDAHO



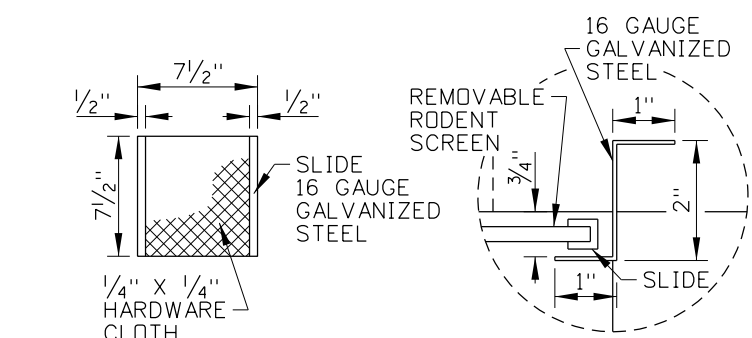
URBAN EDGE DRAIN  
PLAN VIEW



EDGE DRAIN DETAIL



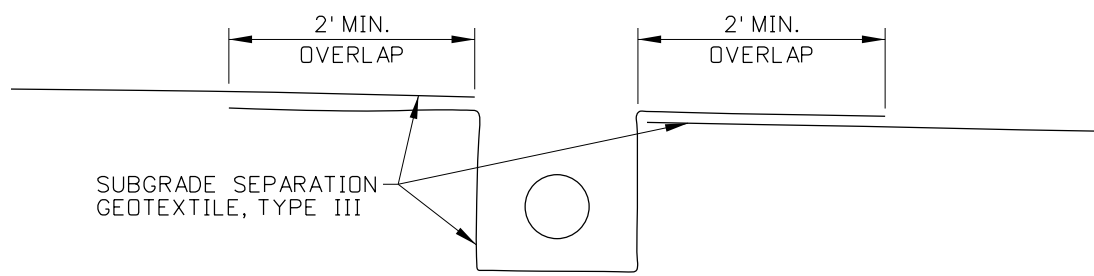
SECTION A-A  
URBAN EDGE DRAIN PLACEMENT



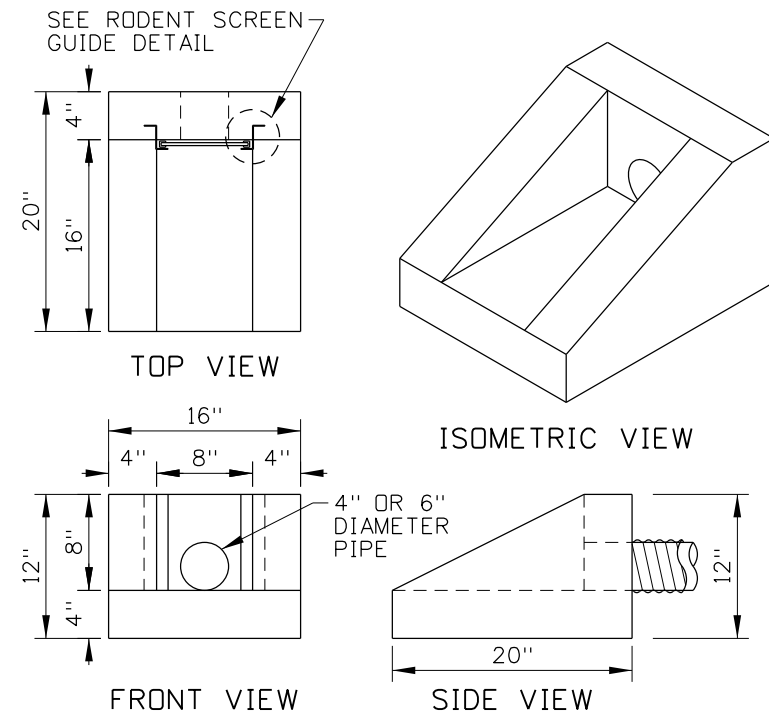
REMOVABLE RODENT  
SCREEN DETAIL      RODENT SCREEN  
GUIDE DETAIL

NOTES

1. PROVIDE CORRUGATED POLYETHYLENE DRAINAGE TUBING IN ACCORDANCE WITH 706.10 OR CLASS PS 46 POLYVINYL CHLORIDE (PVC) PIPE IN ACCORDANCE WITH 706.14.
2. MINIMUM 0.5 PERCENT PIPE GRADE. EDGE DRAIN GRADIENTS MAY BE AS FLAT AS 0.2 PERCENT IF PIPE DIAMETERS GREATER THAN 6 INCHES ARE USED.
3. PLACE OUTLET PIPES IN 10 FOOT LONG CORRUGATED STEEL PIPE SLEEVES EXTENDING FROM THE CONCRETE APRON. USE PIPE JUST LARGE ENOUGH TO ALLOW THE OUTLET PIPES TO FIT THROUGH.
4. PROVIDE OUTLET PIPES AT THE BOTTOM OF SAG VERTICAL CURVES.
5. PROVIDE 6 INCH MINIMUM FREEBOARD BETWEEN THE DITCH BOTTOM AND PIPE OUTLET. WHERE THIS IS NOT PRACTICAL, PROVIDE A COLLECTION AND DISPOSAL SYSTEM.
6. USE COUPLINGS TO JOIN PIPES. MINIMIZE EDGE DRAIN AND OUTLET PIPE JOINTS.
7. PRECAST OR CAST-IN-PLACE CONCRETE APRON AND RODENT PROTECTORS. PROVIDE REMOVABLE RODENT SCREEN.
8. VIDEO INSPECT FINISHED EDGE DRAIN AND OUTLET PIPES. REPLACE DAMAGED PIPE.
9. DRAWING NOT TO SCALE.



GEOTEXTILE DETAIL



CONCRETE APRON AND RODENT PROTECTOR DETAIL  
(SEE NOTE NO. 7)

REVISIONS								
NO.	DATE	BY	NO.	DATE	BY	NO.	DATE	BY
1	02-22	RDL						

SCALES SHOWN ARE FOR 11" X 17" PRINTS ONLY  
CADD FILE NAME: 606-2\_0422.dgn  
DRAWING DATE: FEBRUARY, 2014

**IDAHO TRANSPORTATION DEPARTMENT**



BOISE IDAHO

ORIGINAL SIGNED BY: KEVIN SABLAN  
DESIGN/TRAFFIC SERVICES ENGINEER

STANDARD DRAWING  
**EDGE DRAIN**

ORIGINAL STORED AT: ITD, Headquarters 3311 West State Boise, Idaho

**English**

STANDARD DRAWING NO.  
**606-2**

SHEET 2 OF 2