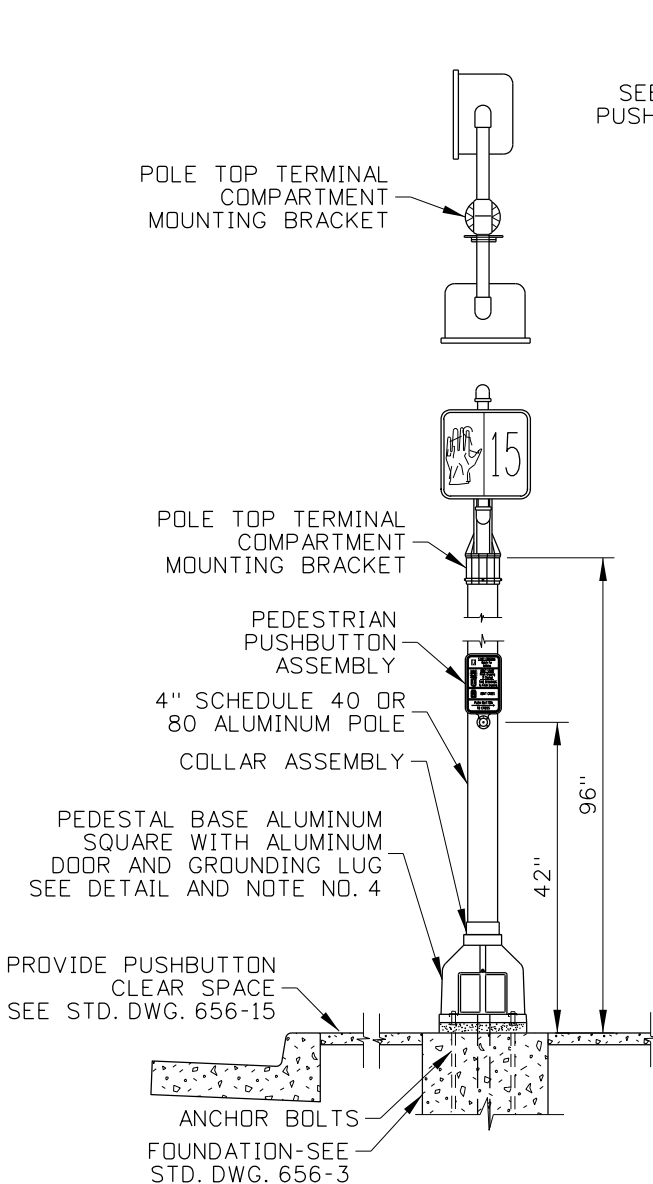
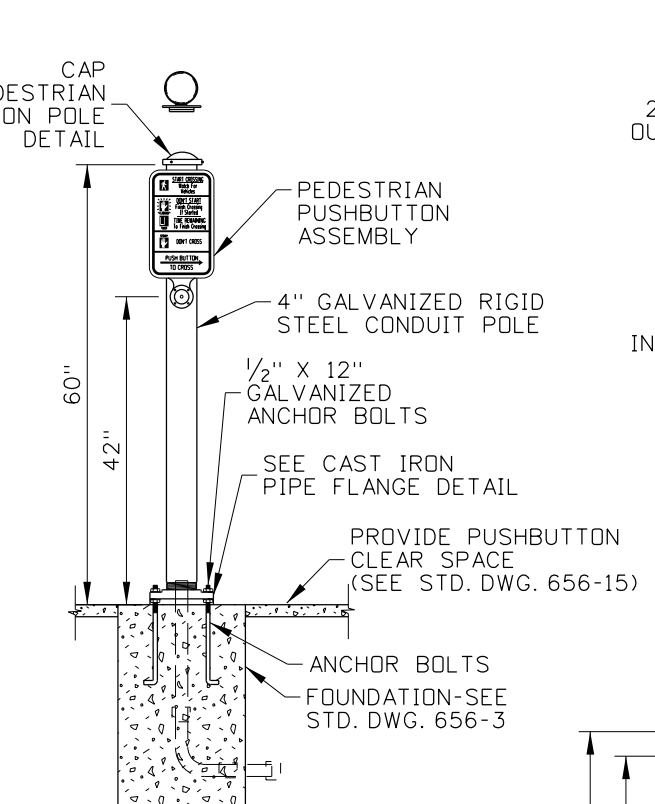


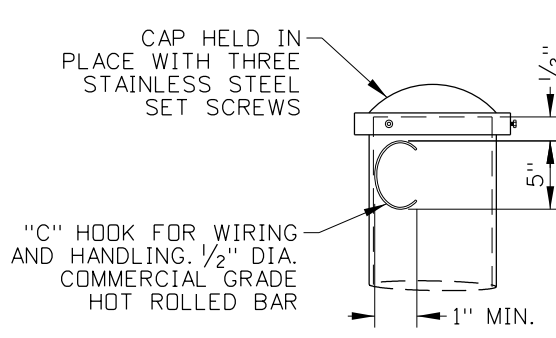
VEHICLE AND PEDESTRIAN SIGNAL



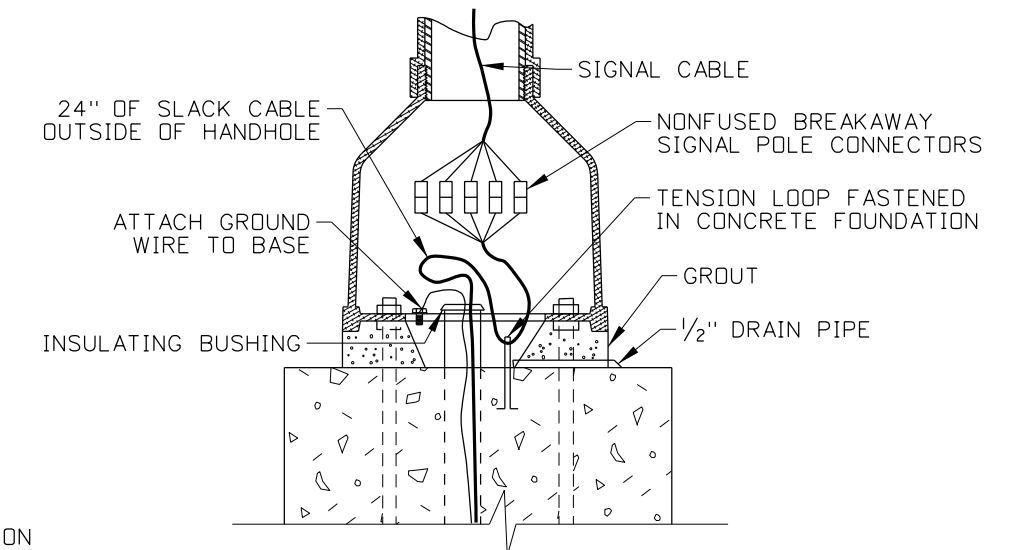
PEDESTRIAN SIGNAL



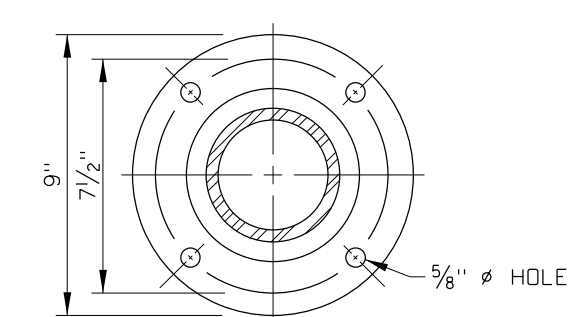
PEDESTRIAN PUSHBUTTON POLE



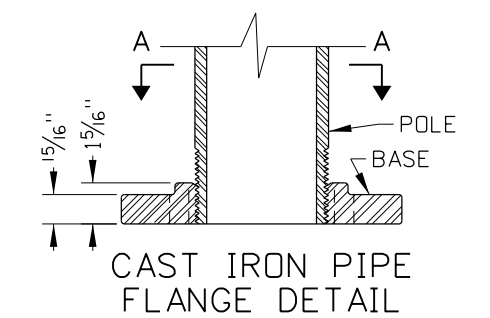
PEDESTRIAN PUSHBUTTON POLE DETAIL



FRANGIBLE ALUMINUM BASE DETAIL



SECTION A-A



CAST IRON PIPE FLANGE DETAIL

NOTES

1. THIS DRAWING SHOWS TYPICAL SIGNAL INSTALLATION DETAILS. THE DETAILS FOR COMPONENTS FROM DIFFERENT SUPPLIERS AND FOR QPL APPROVED PROPRIETARY SYSTEMS MAY VARY.
2. LOCATE POLES AS SHOWN IN THE PLANS AND IN ACCORDANCE WITH STANDARD DRAWING 656-15.
3. ORIENT SIGNAL COMPONENTS AS SHOWN UNLESS OTHERWISE SHOWN ON PLANS.
4. USE STEEL CONDUIT TO EXTEND CONDUIT BEYOND CONCRETE FOUNDATION AND STEEL CONDUIT ELBOWS IN THE FOUNDATION.
5. TERMINATE SPARE STUB OUTS WITH A STEEL COUPLING AND PLASTIC PUSH PLUG AT BOTH ENDS.
6. A FRANGIBLE COUPLING SYSTEM BASE CAN BE SUBSTITUTED FOR A FRANGIBLE CAST ALUMINUM BASE.
7. LEVEL SIGNAL COMPONENTS AFTER THE POLE HAS BEEN PLUMBED.
8. DRAWING NOT TO SCALE.

REVISIONS							
NO.	DATE	BY	NO.	DATE	BY	NO.	DATE
1	12-94	HEB	6	04-14	HEB		
2	08-06	NQB	7	12-16	HEB		
3	12-07	HEB	8	03-20	RDL		
4	07-09	HEB	9	02-22	RDL		
5	07-10	HEB					

SCALES SHOWN ARE FOR 11" X 17" PRINTS ONLY
 CADD FILE NAME: 656-2_0422.dgn
 DRAWING DATE: AUGUST, 1994

IDAHO TRANSPORTATION DEPARTMENT

BOISE IDAHO

ORIGINAL SIGNED BY: KEVIN SABLAN
 DESIGN/TRAFFIC SERVICES ENGINEER

STANDARD DRAWING
FRANGIBLE BASE TRAFFIC SIGNAL POLES
 REQUIRES STD. DWG. 656-3 AND 656-15

English
 STANDARD DRAWING NO.
656-2
 SHEET 1 OF 1

ORIGINAL STORED AT: ITD, Headquarters 3311 West State Boise, Idaho