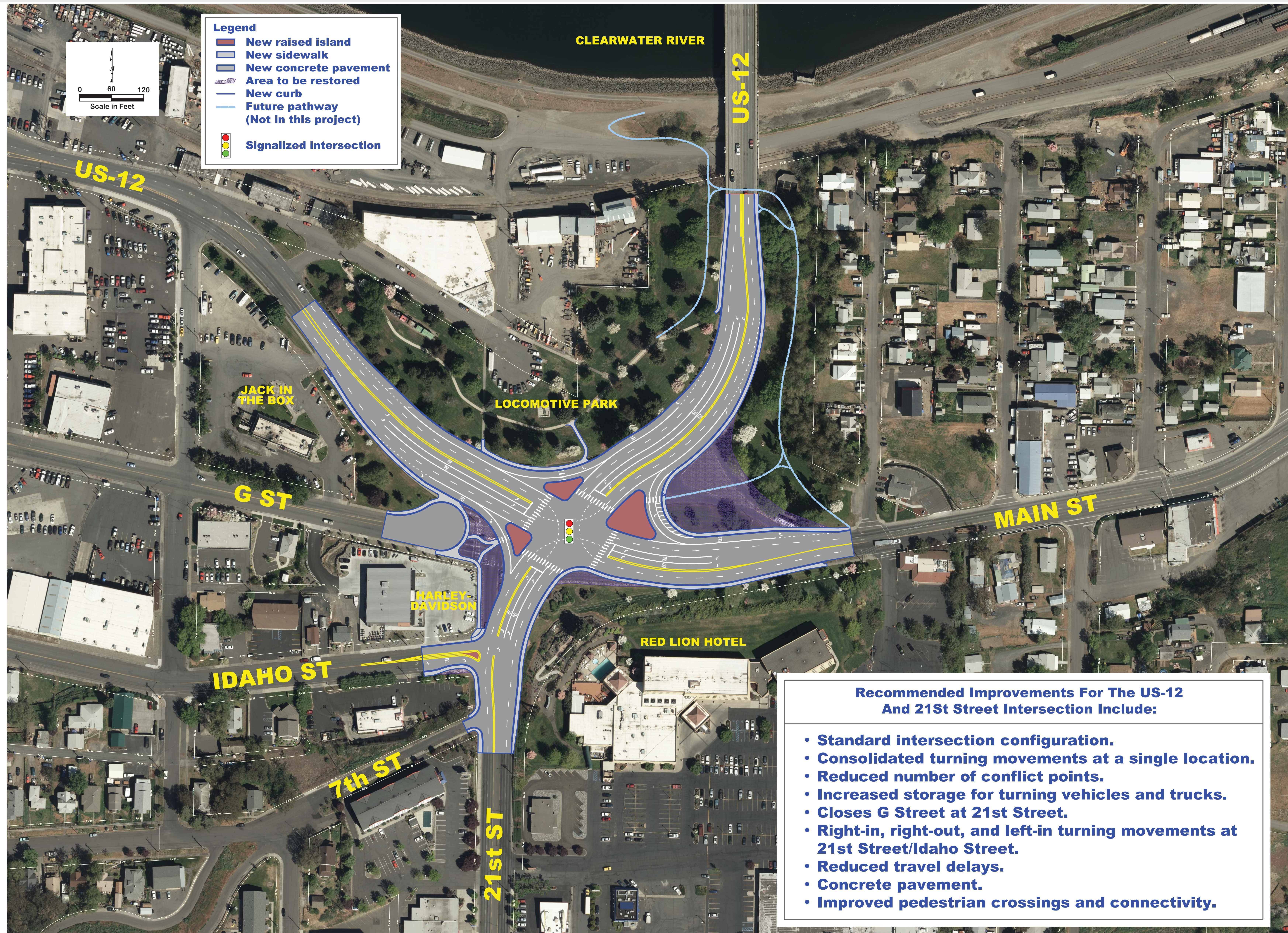


U.S. 12 AND 21ST STREET INTERSECTION

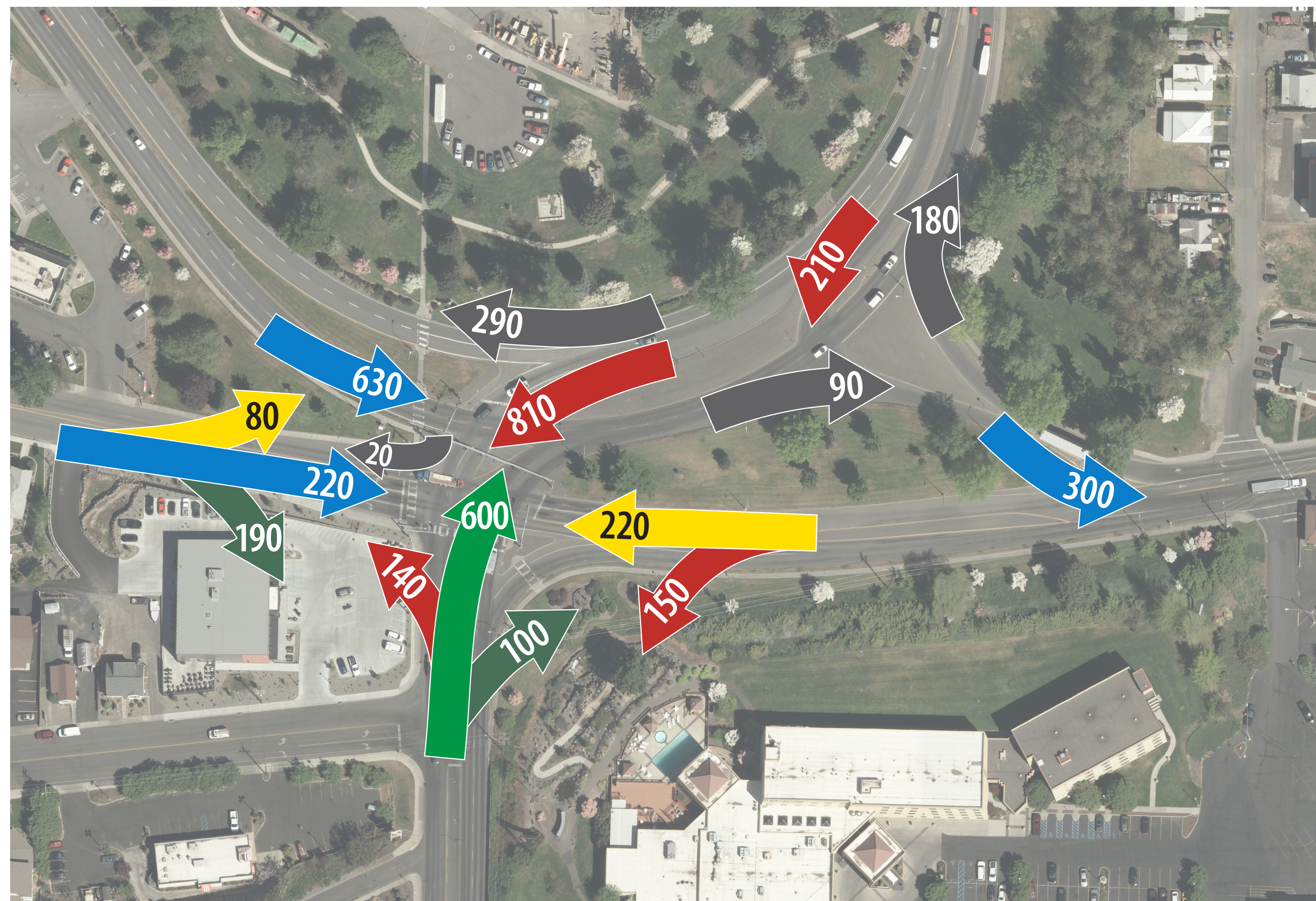
RECOMMENDED IMPROVEMENTS



U.S. 12 AND 21ST STREET INTERSECTION

TRAFFIC OPERATIONS

2041 No Build



Average intersection delay of 94 seconds

Level of Service
(average delay in seconds)

F
≥80 seconds

E
56-80 seconds

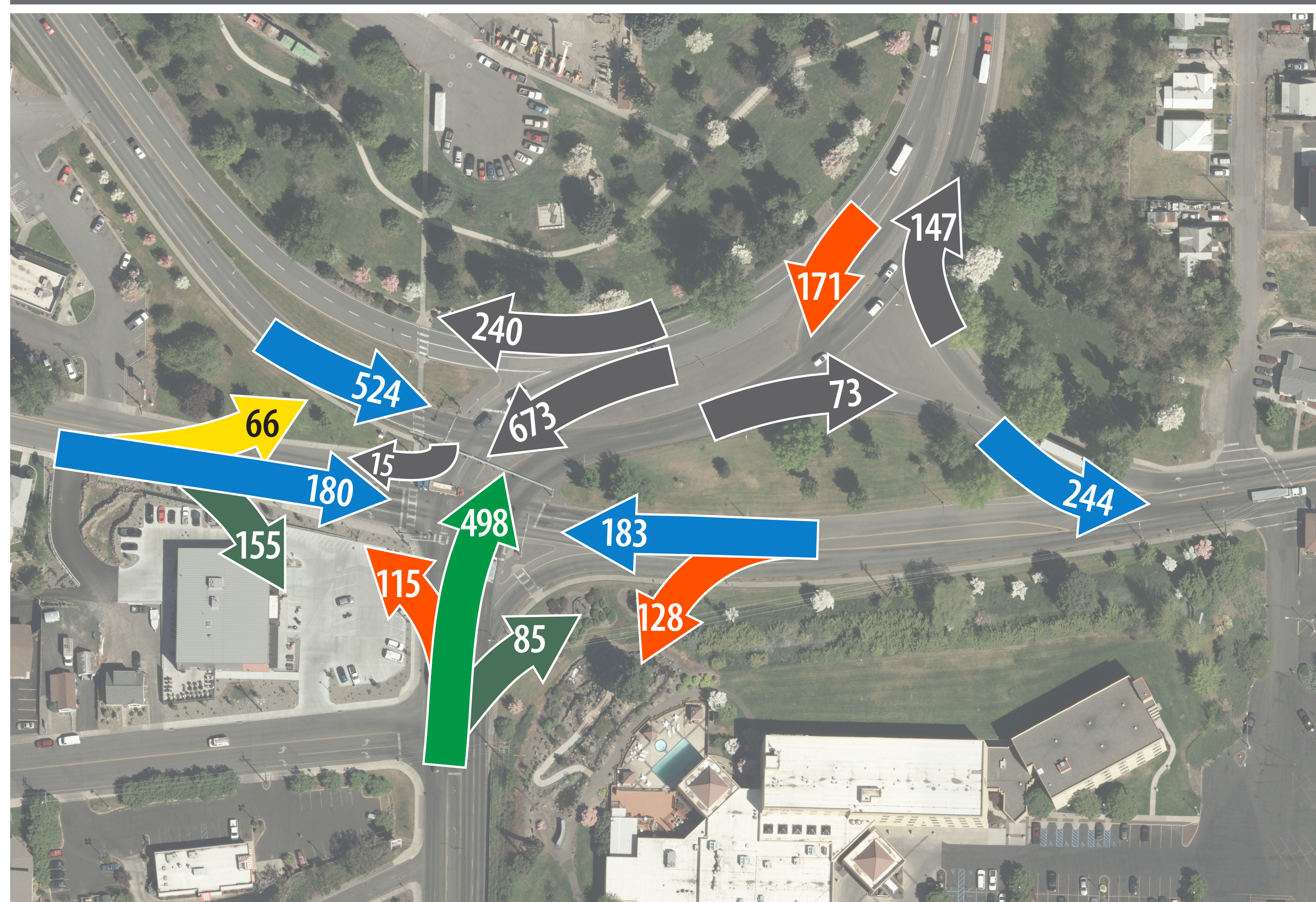
D
36-55 seconds

C
21-35 seconds

B
11-20 seconds

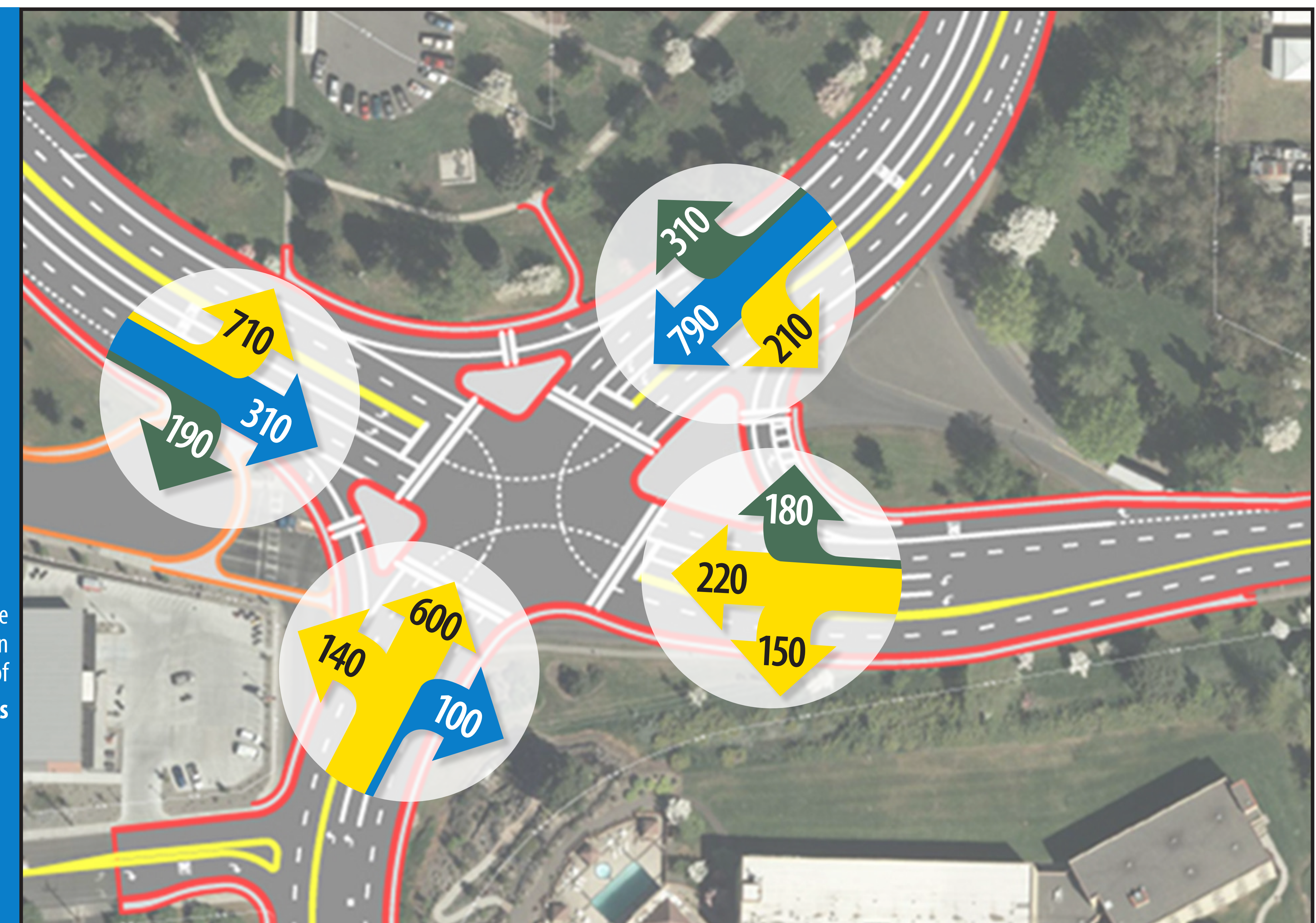
A
≤10 seconds

2014 Existing Conditions



Average intersection delay of 29 seconds

2041 Recommended Improvements



Average intersection delay of 31 seconds

CRASH DATA (2010 - 2014)

	CRASH TYPE			
	Rear-End	Side Swipe	Angle	Head-On
WB US-12	3	2	0	0
EB US-12	3	1	1	1
EB G Street	3	0	0	2
WB Main Street	3	4	3	0
NB 21st Street	1	4	2	1
Total:	13	11	6	4

(Numbers shown are vehicles per hour)

LOCOMOTIVE PARK

The proposed option uses a piece of Locomotive Park.

Locomotive Park is located on highway right-of-way owned by the Idaho Transportation Department. The City of Lewiston and ITD have had an agreement to use the land as a park until highway improvements were necessary.

Mitigation

At this time, the proposed option will reduce the size of the park and remove several trees. ITD is sensitive to the importance of Locomotive Park and is committed to working with the City of Lewiston to minimize impacts.

