

I-84, I-86 Salt Lake System



Interchange Project

Project No.: A018(881)

Key No: 18881



Project Status Update - January 2017

Background

The I-84, I-86 Salt Lake System Interchange project was designed and constructed in 1960. With the roadway, two bridge structures were constructed including #10590 (WB) and #10600 (EB). The Interstate system serves not only southern Idaho commerce, but connects the west coast ports to eastern and southern markets. The I-84, I-86 system is the key transportation link for the northern half of the United States.

Project Description

The **Project Purpose** is to improve safety and mobility on the I-84, I-86 interstate interchange system. To accomplish this, current design standards will be applied and potential roadway geometrics will be analyzed. The **Project Need** is to replace the aging bridge structures built in 1960 due to functional obsolescence and width restrictions. Both structures indicate insufficient ratings for deck, substructure, and super structure. New roadway geometrics will also be considered to improve safety and increase mobility.

Anticipated Project Schedule Preliminary Design through Construction	
Environmental Documentation <ul style="list-style-type: none">Finalize resource evaluationsNPDES permit determinationDraft and submit the environmental document for FHWA review and approval	January - May 2017
Public Involvement Activities <ul style="list-style-type: none">Develop project information sheet #2Update web pageReview concept plan with property owners, stakeholders and local governments	January - February 2017
Public Open House <ul style="list-style-type: none">Announce project status and invitation to public open house through mediaPresent concept plan and preliminary traffic control plan	March 2017
Preliminary Design <ul style="list-style-type: none">Develop preliminary design plans	January - May 2017
Final Design and Advertisement <ul style="list-style-type: none">Complete final design documentsFinalize right of way plansRight of way acquisition	May - October 2017
Construction Activities <ul style="list-style-type: none">Advertise for contractor bidsConstruction	Winter 2017/18 through 2019

Project Approach / Status

Phase 1 Activities: During Phase 1, the design team led by Stanley Consultants worked with ITD to initiate the project and complete the concept evaluation and design. The team also collected environmental information, traffic, survey and geotechnical data. The team then conducted a *Value Planning Process* to develop and evaluate alternatives. Each alternative was measured on how well it met the purpose, need and strategic objectives of the project. ITD then selected *the concept design which is illustrated on the back of this newsletter*.

Phase 2 Activities: Phase 2 is underway and will include completion of environmental documentation and permitting, broader public involvement activities, property owner coordination, and preliminary design activities for the selected concept.

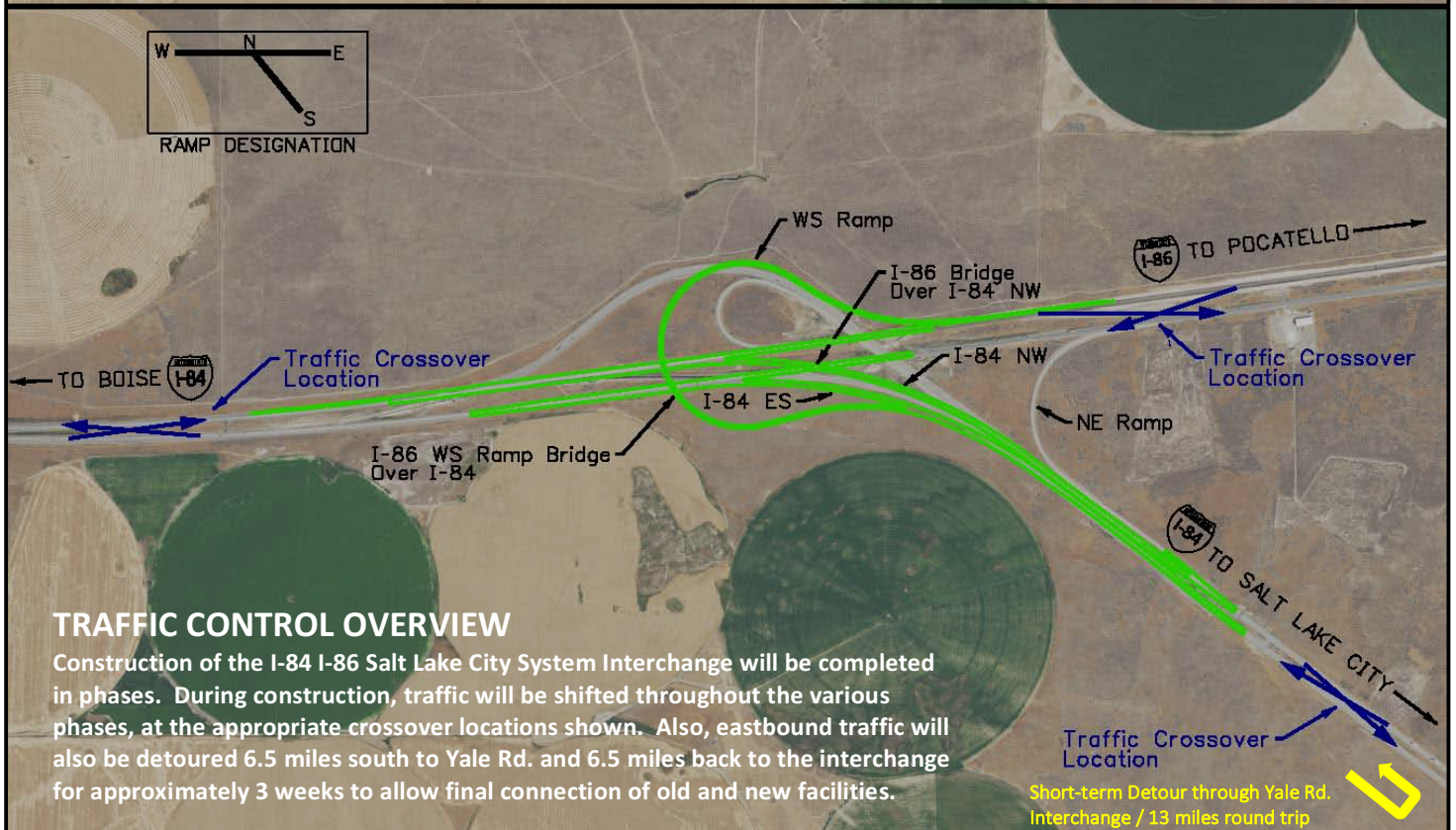
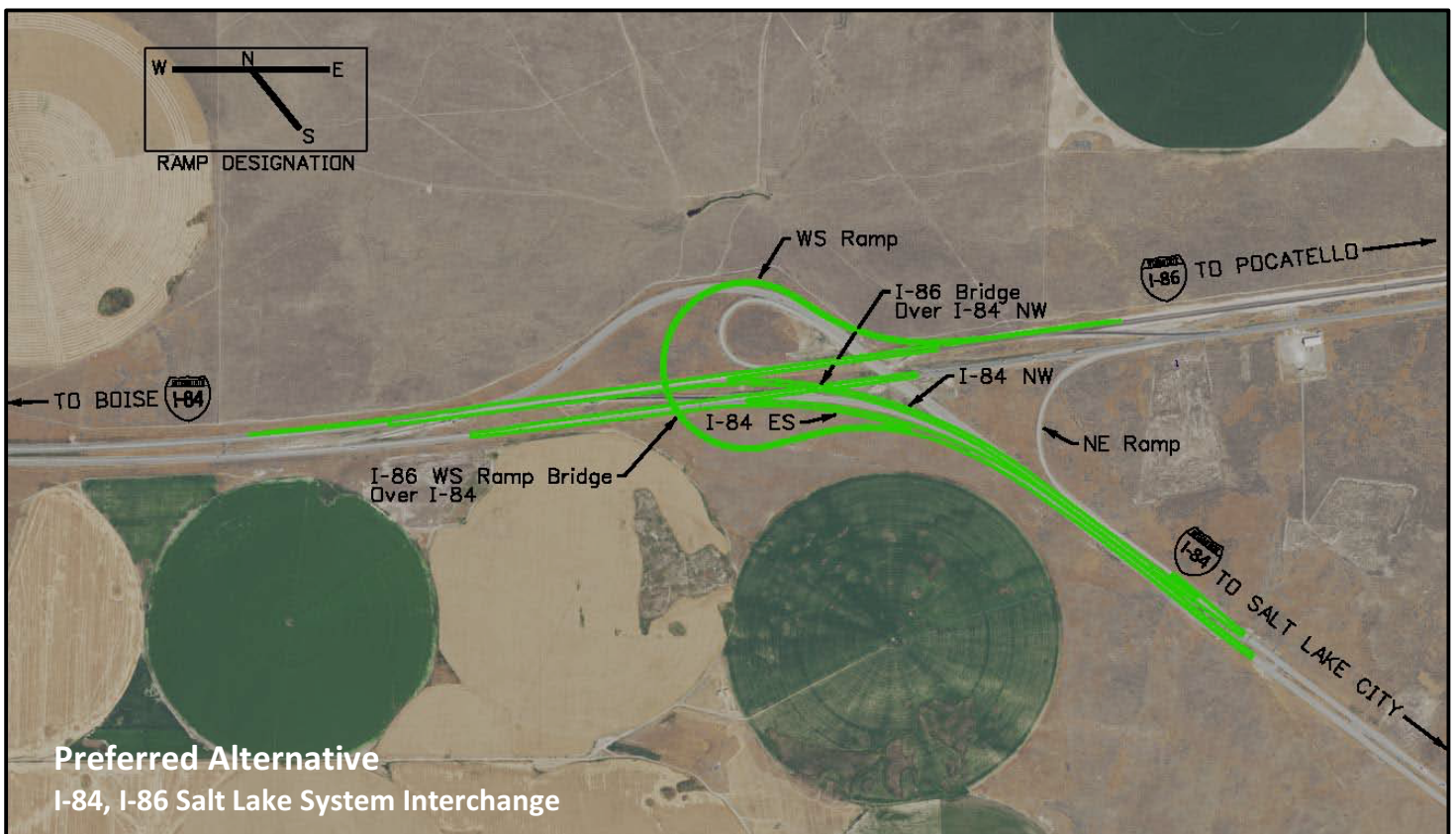
Phase 3 Activities: Phase 3 is anticipated to start in May 2017 and will include completion of the final design, permitting, and preparation of construction documents.

Construction

Advertisement for contractor bids is scheduled for October 2017, with construction planned to begin early winter 2017 and conclude late fall 2019.

Preliminary Traffic Control Plan / Short Term Detour

The design team has worked diligently to develop a construction approach that minimizes impact to the traveling public. The approach will allow reconstruction of much of the project while still allowing full use of the existing interchange. As is typical, the project will utilize intermittent crossover routing as shown on the back of the newsletter. In addition, to allow the contractor to make final connections between the old and new facilities, there will be a short period, not to exceed 3 weeks, of traffic detouring. The detour will require eastbound travelers to detour 6.5 miles south to exit #228 at Yale Rd., where they will cross over I-84 and take the on-ramp and head back toward the system interchange. Eastbound travelers will then take exit #222 to I-86 East. The total detour distance will be approximately 13 miles.



For more information

- **Mike Scott, ITD Project Manager**
216 South Date, Shoshone, ID 83352 / 208-886-7806 / Mike.Scott@itd.idaho.gov
- **Mike Pepper, KMP Planning, Public Involvement Lead**
2530 Canyon Gate Pl., Twin Falls, ID 83301 / 208-316-5817 / kmpplanning@gmail.com
- **Web Page:** <http://itd.idaho.gov/projects/D4/index.html> - Then, click on the link to I-84, I-86 Salt Lake System Interchange

