



## CONSTRUCTION AHEAD – 2017

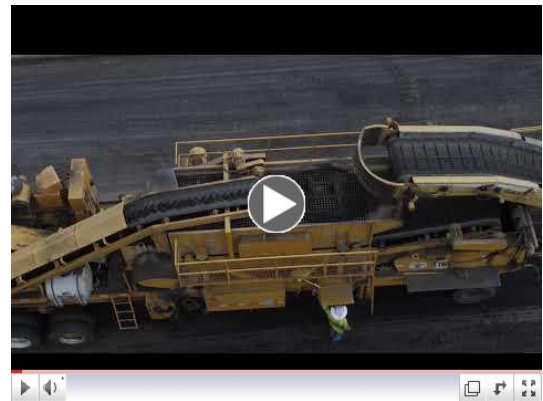


### A look inside two work zones on Interstate 15

#### Recycling the interstate in Arimo

The Idaho Transportation Department has completed the process of recycling the old road surface of Interstate 15 near Arimo.

The method, called **cold in-place recycling**, involves removing the top several inches of pavement, mixing it with new components and re-applying it to the road. The process eliminates waste and reduces the cost of buying new materials. [Watch the video.](#)



#### How to lift a bridge

The Idaho Transportation Department used a process called "**bridge jacking**" to repair the Rapid Creek Bridge and South Inkom Interchange this month. Seven industrial-sized jacks (one for each girder) were placed under the bridge and slowly raised about five inches. Crews poured grout and reinforcing steel underneath, then removed the jacks. Raising the bridge improves sight distance for drivers and reverses the natural "settling" process that has occurred over the last 50 years.



Your Safety.  
Your Mobility.  
Your Economic Opportunity.