

Crashes and Injuries by Month

Table 8 shows the number of crashes and injuries by severity for each month.

	Fatal Crashes	Injury Crashes	Total Crashes	Fatal Injuries	Serious Injuries	Visible Injuries	Possible Injuries
January	6	602	1,943	6	98	246	508
February	3	564	1,781	3	89	252	446
March	7	531	1,541	8	81	208	468
April	14	499	1,373	14	76	222	447
May	9	580	1,522	12	92	266	468
June	15	671	1,602	18	128	322	561
July	14	721	1,771	16	150	379	562
August	12	720	1,820	12	128	330	606
September	25	736	1,889	27	123	352	549
October	18	643	1,804	19	126	252	545
November	18	598	1,864	19	93	264	515
December	11	627	1,923	13	109	261	544
Totals	152	7,492	20,833	167	1,293	3,354	6,219

In 2011, September, October, and November had the highest number of fatal crashes. January and December had the highest number of total crashes. Crashes occurring in the winter months are more likely to be attributed to severe weather such as ice and snow; however, these crashes tend to be less severe as people generally slow down and are more cautious when driving in adverse weather conditions.

Crashes by Day of the Week

Figures 5 and 6 show the number of fatal and total crashes by day of the week.

Figure 5
Fatal Crashes by Day of the Week: 2011

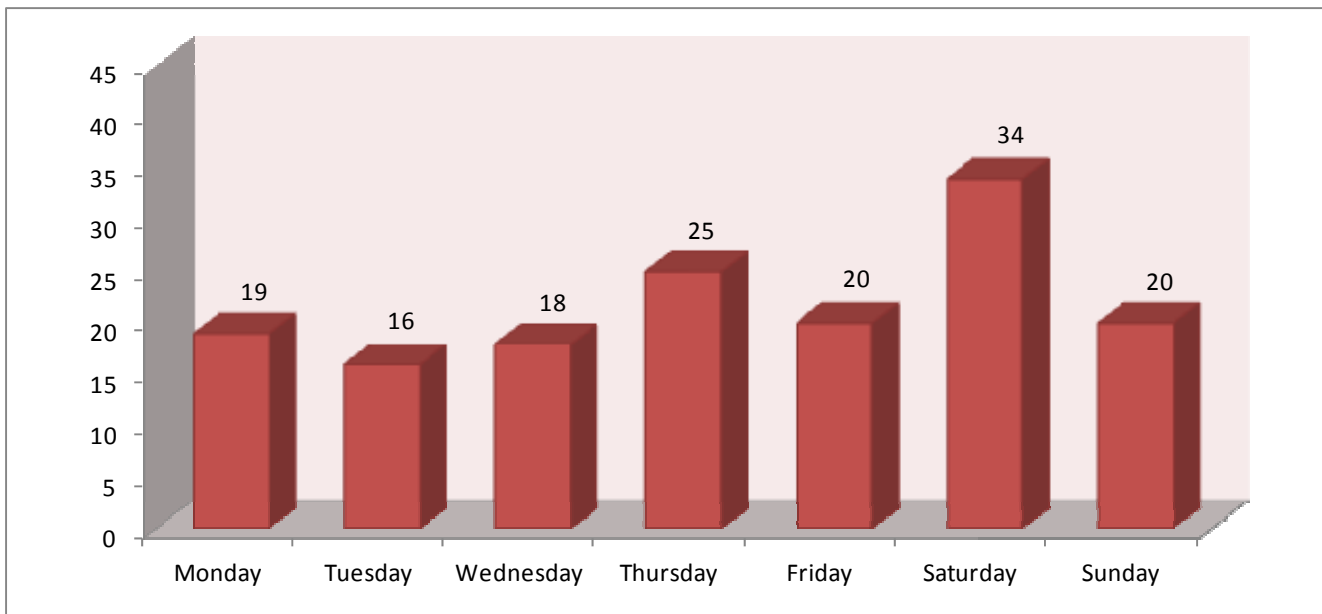
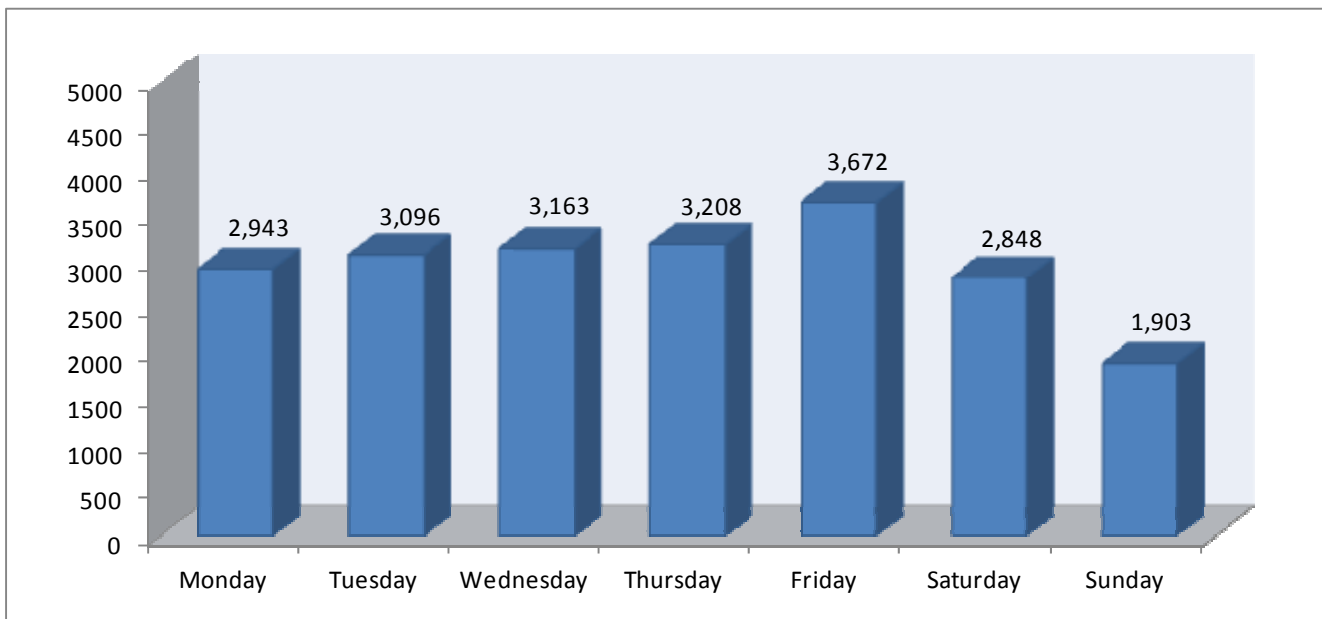


Figure 6
Total Crashes by Day of the Week: 2011



Crashes by Time of Day

Figures 7 and 8 show the number of fatal and total crashes by the time of day.

Figure 7
Fatal Crashes by Time of Day: 2011

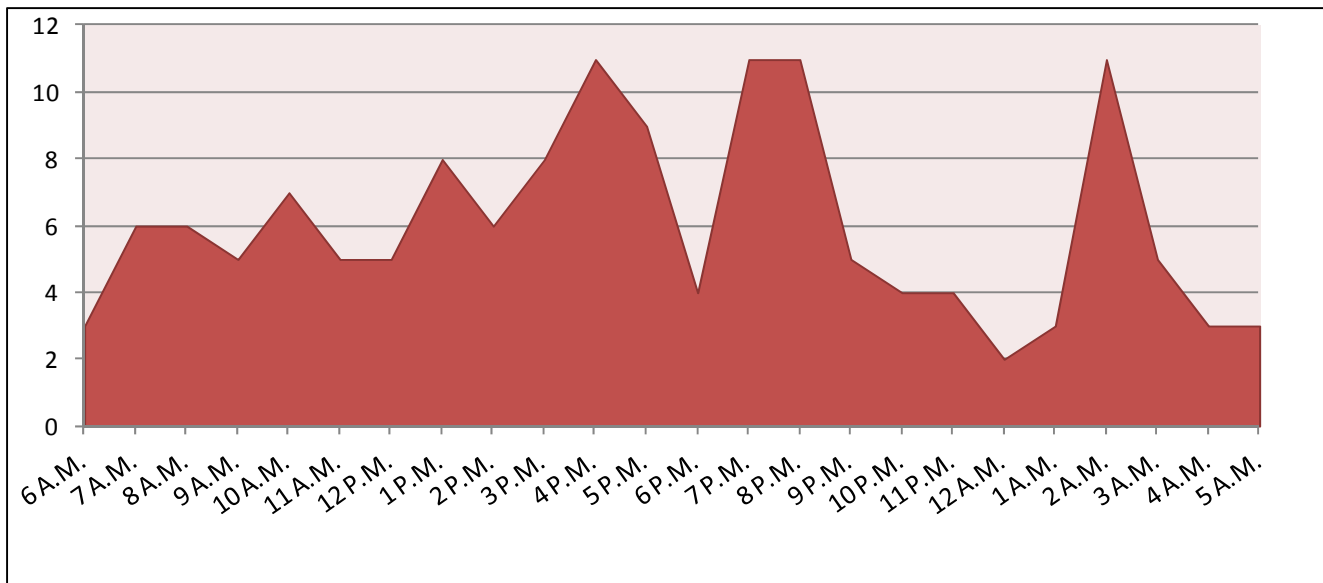


Figure 8
Total Crashes by Time of Day: 2011

