

Crashes and Injuries by Month

Table 8 shows the number of crashes and injuries by severity for each month.

Table 8							
Severity of Crashes and Type of Injury by Month: 2012							
	Fatal Crashes	Injury Crashes	Total Crashes	Fatal Injuries	Serious Injuries	Visible Injuries	Possible Injuries
January	11	560	1,857	13	70	250	488
February	8	497	1,588	8	102	210	416
March	14	552	1,639	15	68	250	446
April	12	559	1,446	14	79	238	474
May	15	645	1,630	17	124	281	509
June	14	644	1,633	15	121	306	498
July	26	677	1,767	27	145	335	545
August	18	733	1,860	20	143	340	566
September	13	655	1,718	15	101	276	553
October	12	708	1,979	13	119	310	581
November	15	685	1,975	15	112	324	567
December	11	715	2,310	12	103	308	630
Totals	169	7,630	21,402	184	1,287	3,428	6,273

In 2012, July and August had the highest number of fatal crashes. October, November, and December had the highest number of total crashes. Crashes occurring in the winter months are more likely to be attributed to severe weather such as ice and snow; however, these crashes tend to be less severe as people generally slow down and are more cautious when driving in adverse weather conditions.

Crashes by Day of the Week

Figures 5 and 6 show the number of fatal and total crashes by day of the week.

Figure 5
Fatal Crashes by Day of the Week: 2012

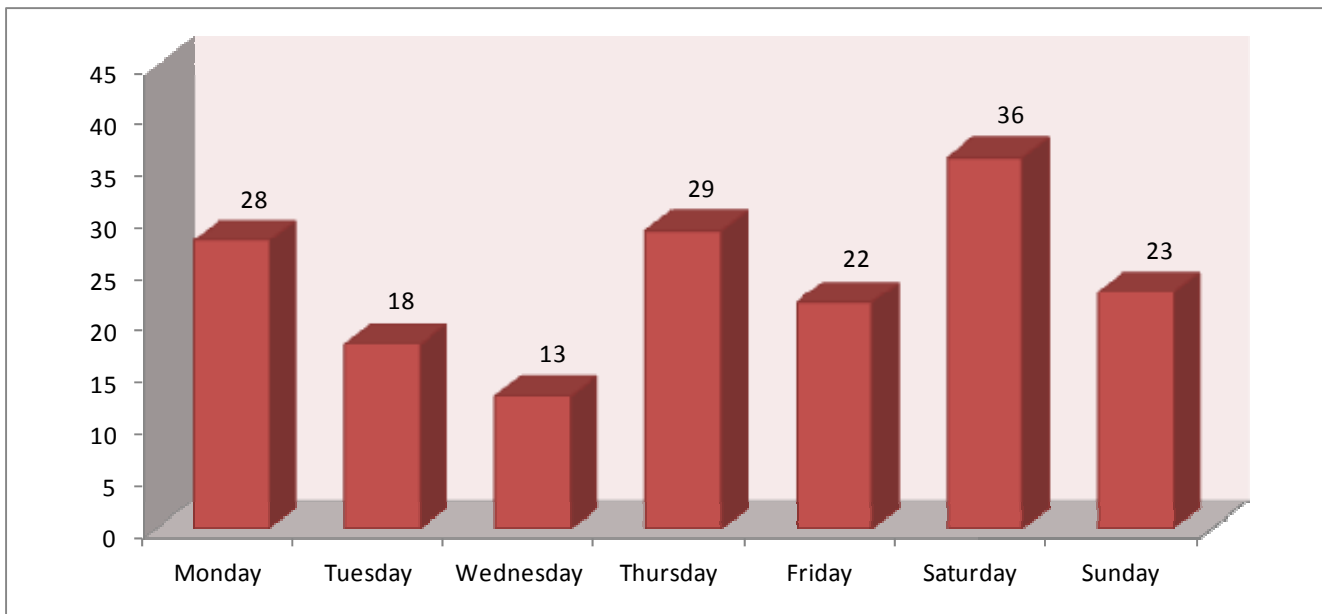
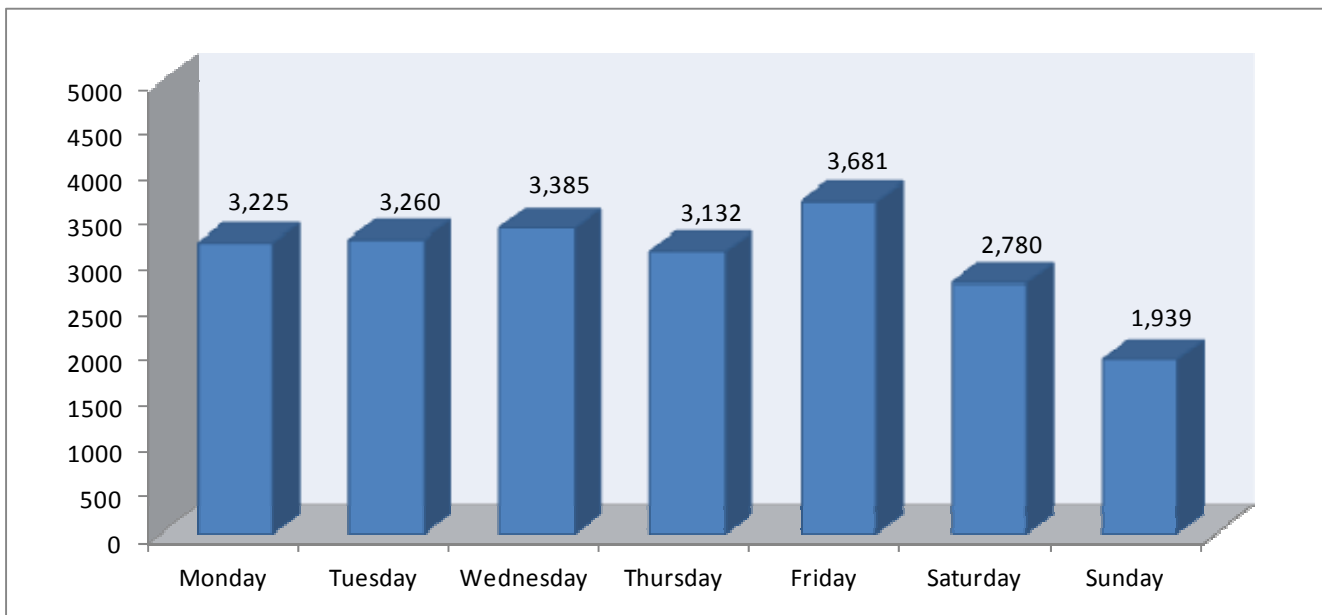


Figure 6
Total Crashes by Day of the Week: 2012



Crashes by Time of Day

Figures 7 and 8 show the number of fatal and total crashes by the time of day.

Figure 7
Fatal Crashes by Time of Day: 2012

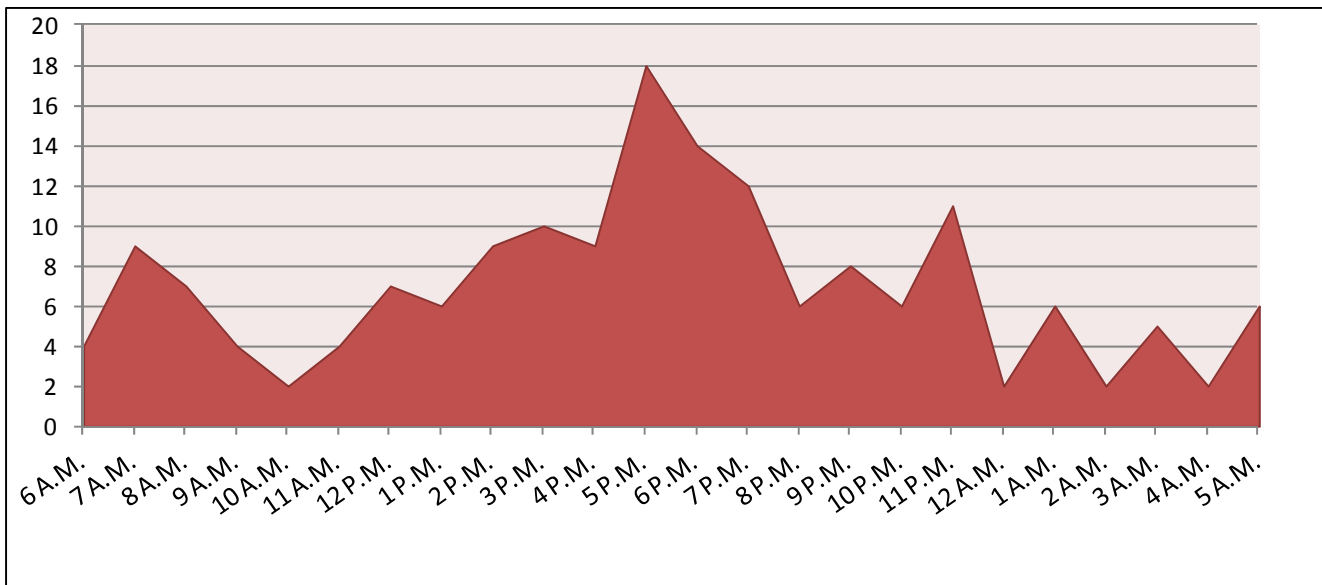


Figure 8
Total Crashes by Time of Day: 2012

