



Quick Notes

from the Idaho Office of Highway Safety

July 9, 2012

Mark your calendar for the **Highway Safety Summit** in Coeur d'Alene, ID on **May 1-2, 2013**.

Idaho Transportation Department - PO Box 7129 – Boise, ID 83707-1129
P: (208) 334-8100 F: (208) 334-4430 -- www.itd.idaho.gov/ohs

Fatalities for 2012 = 75

General Message from the Highway Safety Manager

Hi Highway Safety Partners:

The Crash Report for 2011 will be published this week so I thought it would be a good idea to share some of the highlights about crashes in Idaho. This 2011 crash report will be on our web site in the very near future. Along with the rest of the nation Idaho saw a significant decrease in fatalities in 2011.

In Idaho the number of motor vehicle crashes decreased by 7.6 percent, from 22,555 in 2010 to 20,833 in 2011. The number of fatalities resulting from motor vehicle crashes decreased from 209 in 2010 to 167 in 2011, a 20 percent decrease. The number of fatal crashes decreased from 185 in 2010 to 152 in 2011. The number of serious injuries decreased from 1,396 in 2010 to 1,293 in 2011, a 7.4% decrease.

Idaho's fatality rate per 100 million vehicle miles traveled was 1.08 in 2011, down from 1.34 in 2010.

While 62 percent of all motor vehicle crashes occurred on urban roadways, 80 percent of the fatal motor vehicle crashes occurred on rural roadways in 2011.

After increasing in 2010, fatalities resulting from impaired driving crashes decreased in 2011 by 31%. However, 40 percent of all fatalities resulted from impaired driving, which is consistent with most other recent years. Of the 66 persons killed in impaired driving crashes, 95 percent were either the impaired driver, a person riding with an impaired driver, and impaired bicyclist, or an impaired pedestrian.

Idaho's observed seat belt use increased from 78 percent in 2010 to 79 percent in 2011. While the observed rate was 79 percent, only 32 percent of the motor vehicle occupants killed in crashes were wearing seat belts. If everyone had been wearing seat belts, 39 of the 77 unbelted motor vehicle occupants may have been saved.

Aggressive driving was a contributing factor in 49 percent of the motor vehicle crashes and 64 people were killed in aggressive driving crashes in 2011.

Distracted driving was a factor in 24 percent of the motor vehicle crashes on 2011 and 41 people were killed in distracted driving crashes.

Youthful drivers, ages 15 to 19, continue to be over-involved in motor vehicle crashes. In 2011, youthful drivers were 2.6 times as likely as all other drivers to be involved in a fatal or injury crash. There were 34 people killed in crashes involving youthful drivers.

There were 10 pedestrians and no bicyclists killed in motor vehicle crashes in 2011.

The number of motorcyclists killed in motor vehicle crashes decreased from 28 in 2010 to 17 in 2011. Almost two-thirds (65 percent) of fatal motorcycle crashes in 2011 involved just the motorcycle, while more than one-third (35 percent) of fatal motorcycle crashes involved an impaired driver.

Fatal crashes involving commercial motor vehicles increased by 57 percent in 2011, while the number of injury crashes involving commercial motor vehicles increased by 11 percent. There were 26 people killed and 651 people injured in commercial motor vehicle crashes in 2011.

In 2012 Idaho the number of fatalities are on the rise and the Office of Highway Safety is working to pinpoint the cause. The numbers so far for 2012 are shown below for your review.

While 2011 was encouraging, much work is left to be done as we all work *Toward Zero Deaths*. Thanks to all our highway safety partners for the progress made in 2011.

Brent Jennings, PE
Highway Safety Manager
brent.jennings@itd.idaho.gov

Researchers weigh in on the issue of distracted driving

Jun 19, 2012 10:00 AM

Distracted driving was the hot topic at this year's Lifesavers conference on highway safety priorities in Orlando, Florida. Besides the session on [technologies](#) to prevent distracted driving that we spoke at, there were a number of other discussions last week from industry and government leaders to explore the issue and how to best tackle this growing problem.

There are three key parts to distraction, which David Strayer, a professor of psychology at the University of Utah's Applied Cognition Lab, calls the driver distraction triad: manual, visual, and cognitive. A task such as texting represents the manual distraction, taking your eyes off the road is the visual distraction and having your mind off the drive is the cognitive distraction. Among the challenges in defining and addressing distraction is that research and studies have come to different conclusions on how distracting a conversation can be. [Click for more.](#)

Idaho's New Texting and Driving Law

IDAHO STATE POLICE NEWS RELEASE

District 3 Headquarters, 700 S. Stratford Dr., Meridian 83642

(208) 884-7122, Fax (208) 846-7520

June 26, 2012 2:33 pm Please direct questions to the Public Information Officer

The passing of Idaho Code 49-1401A makes Idaho the 37th state to prohibit the practice of texting while driving. Idaho's new texting while driving law officially goes into effect on July 1, 2012, making it an infraction to text and drive; issued as a primary citation the violator will be fined \$81.50.

Senate Bill NO. 1274 Relating to Texting and Driving

49-1401A. TEXTING WHILE DRIVING. (1) As used in this section, "texting" means engaging in the review of, or manual preparation and transmission of, written communications via handheld wireless devices. This definition does not include voice operated or hands free devices that allow the user to review, prepare and transmit a text message without the use of their hand except to activate, deactivate or initiate a feature function.

(2) Texting, as that term is defined in subsection (1) of this section, while driving a moving motor vehicle shall constitute an infraction provided this does not apply to voice operated or hands free devices that allow the user to review, prepare and transmit a text message without the use of their hand except to activate, deactivate or initiate a feature function. Every person who violates this section shall...

When ISP troopers observe a violation of this code they will take the appropriate action as they do with any traffic code violation.

REAL OR FAKE ID'S CAN YOU TELL?

Officer Jermaine Galloway, Boise Police Department
Office 208-426-4499 or jgalloway@cityofboise.org



Over the last few months I have been doing follow up on the Fake ID problems in Boise and around the country. After interviewing several minors, college aged kids, bars and officers I have found that we have a large amount of Fake ID's floating around the valley and most likely the state. I know this is not news to many of us. What is news is the type of ID's and how prevalent and easy they are to get. Also, many people have no idea that this company even exists.

Most of the people are getting their fraudulent ID's from the website ID Chief <http://www.idchief.ph/>. This website produces multiple different state ID's including Idaho. I have talked to several street level alcohol investigators who are similar to me in their alcohol enforcement of underage drinking, special events, and retail enforcement. Each officer (especially in college communities) are dealing with these ID's. In Boise alone, I have seen fraudulent Ohio, Arizona, Pennsylvania, Wisconsin, Florida and Connecticut. The most common ID's are Arizona and Idaho. A couple of the ID's are spot on and are hard to tell are fake. Others have flaws that are easy to identify if you know what you are looking for. The company is out of China and they are sending large shipments of ID's to our area.

When someone purchases one of these ID's they automatically get two ID's for \$200.00. The more friends that you get to go in with you the cheaper the cost. Minors are sending their photo, signature, sometimes their home address and info they want on the license over to China and then getting the ID generally within a week. This is not only college students, we have many high school students purchasing these ID's in bulk and using them at bars, convenience stores and restaurants. What the kids are not aware of is that their personal info is being used and sold by the company in China.

Also, not all law enforcement officers are aware that these ID's exist. If an officer doesn't or can't do a check through their dispatch they could miss these ID's as can a retailer or business owner. Also, people can personalize these ID's to detail the info they want it to.

Some investigators are telling me that a handful of the ID's do scan in scanners. We have had that happen here in the Boise area. The scanner didn't read the ID like normal, but it did read the ID.

This has created an entire new dynamic in the attempt to prevent underage drinking (and false identity). These ID's are very good and it has opened the flood gates to accessibility. It is not only Boise; just about every average size community is dealing with this.

The college communities are flooded with it. I know many of you are attending the Northwest Alcohol Conference. I will be discussing them slightly during my party patrol class and Joe Cannon from Virginia will be doing an entire session on ID's. You can also learn more from the link of a story that ran in Washington State. Also, take notice on how many fake Idaho ID's she has on her desk!

<http://www.komonews.com/news/local/Near-perfect-fake-IDs-pose-law-enforcement-challenge-153736705.html>

These ID's have brought an entirely new dynamic to underage drinking. This is just a quick update. If you have more questions about the specific fake ID's feel free to give me a call, I have done a lot of research on them and can most likely answer your questions.

NEW! 2012 Webinar Series: Health and Equity in Transportation: Promising Methods and Modes to Improve Health Outcomes

The American Public Health Association (APHA) is hosting a free webinar series on critical health and equity issues within the transportation sector. These three, 60-minute APHA webinars will explore the ties between public health and:

- Increased use of public transportation;
- Reduced injuries, particularly for children and young drivers;
- Reduced inequities from increased access to goods and services; and
- Other topics within transportation, such as updates on the federal surface transportation authorization.

Note: Archived webinar recordings and presentation slides are posted below.

<http://www.apha.org/advocacy/priorities/issues/transportation/Webinars.htm>



MADD is seeking law enforcement officers, practitioners, and trainers to apply for scholarships to attend a workshop track, **“Ignition Interlock Training for the Law Enforcement Professional”** to be held in conjunction with the MADD National Conference in Arlington, Virginia, September 28 and 29, 2012. This presents a marvelous opportunity for MADD representatives to reach out to their law enforcement partners. A total of 75 participants will be selected in a cooperative process between NHTSA and MADD.

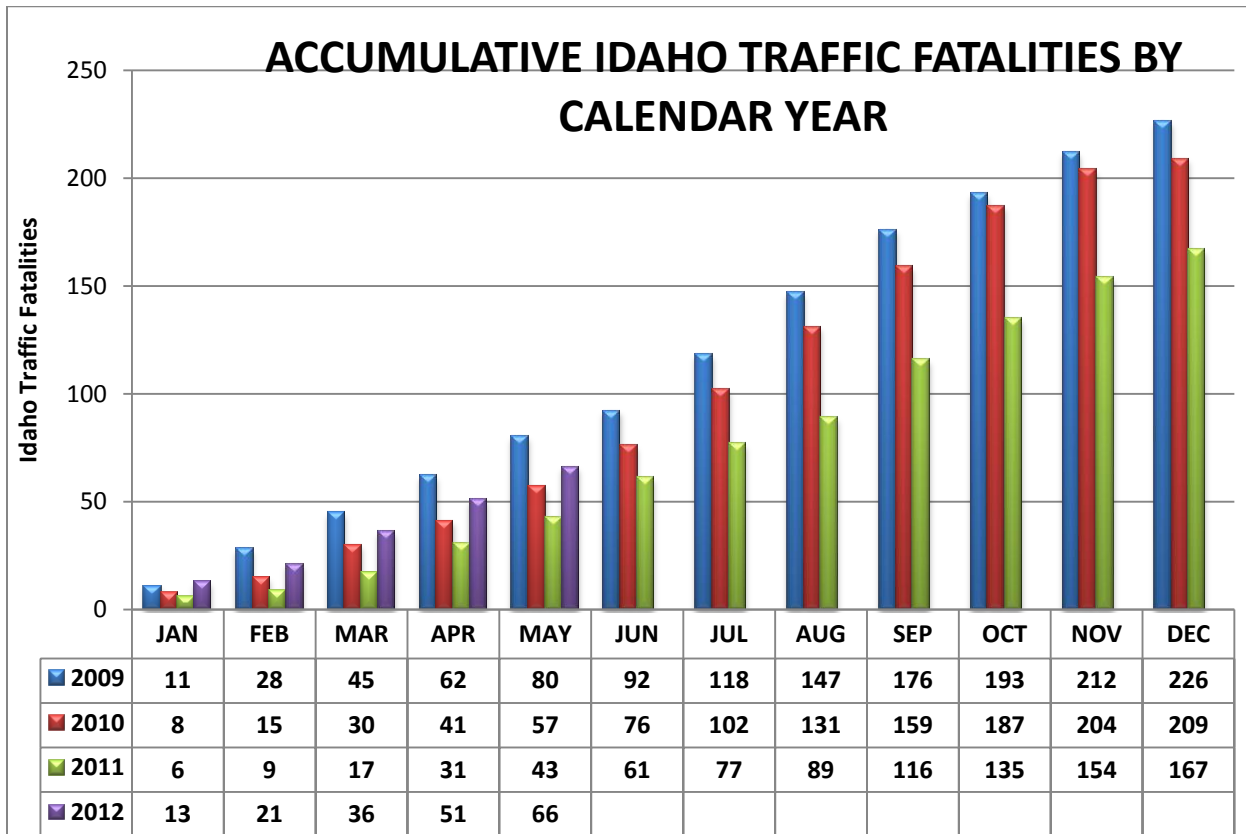
If you are interested in a scholarship application please contact Lisa Losness, (208) 334-8103 or lisa.losness@itd.idaho.gov.

IDAHO TRANSPORTATION DEPARTMENT - Office of Highway Safety

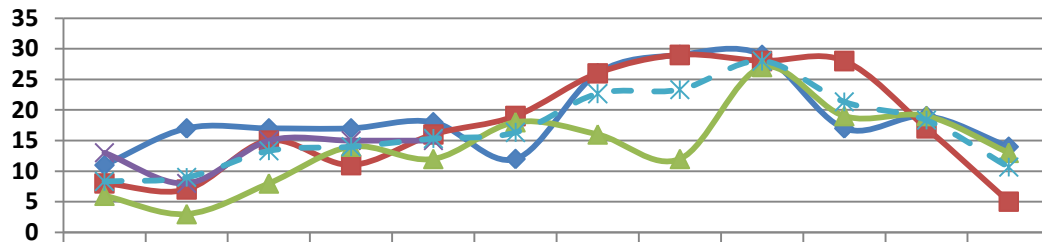
Fatalities By the Month* - May 2012

MONTH						CUMULATIVE TOTALS			
	Actual	Actual	Actual	09,10,11	Actual	Cumulative (09,10,11,12)			
	2009	2010	2011	AVERAGE	2012	2009	2010	2011	2012
JAN	11	8	6	8	13	11	8	6	13
FEB	17	7	3	9	8	28	15	9	21
MAR	17	15	8	13	15	45	30	17	36
APR	17	11	14	14	15	62	41	31	51
MAY	18	16	12	15	15	80	57	43	66
JUN	12	19	18	16		92	76	61	
JUL	26	26	16	23		118	102	77	
AUG	29	29	12	23		147	131	89	
SEP	29	28	27	28		176	159	116	
OCT	17	28	19	21		193	187	135	
NOV	19	17	19	18		212	204	154	
DEC	14	5	13	11		226	209	167	
YEAR TO DATE	226	209	167	201	66				

*Data limitations: This report is based on information provided by law enforcement agencies on crashes resulting in a death that occurs within 30 days of the crash. **Data is preliminary and is subject to change. Totals of this report are the number of persons killed. Averages are rounded.**



IDAHO MONTHLY TRAFFIC FATALITIES



	JAN	FEB	MAR	APR	MAY	JUN	JUL	AUG	SEP	OCT	NOV	DEC
2009	11	17	17	17	18	12	26	29	29	17	19	14
2010	8	7	15	11	16	19	26	29	28	28	17	5
2011	6	3	8	14	12	18	16	12	27	19	19	13
2012	13	8	15	15	15							
09,10,11	8	9	13	14	15	16	23	23	28	21	18	11

Corner Control

Idaho STAR Newsletter July 2, 2012

Running off the road in corners is the most common crash scenario in Idaho's fatal motorcycle crashes (it represented over 40% of fatal crashes during 2009-2011). Running off the road and hitting an oncoming car; running off the road into a ditch; running off the road into a guardrail; running off the road and hitting a tree or some other solid object. You get the point - running off the road in a turn is not good.

So, what does it mean to have 'Corner Control?' If you unintentionally cross over the centerline or the fog line, you lack corner control. [For complete article and Newsletter.](#)

Aggressive Driving

In the *April 23, 2012 Quick Notes* we learned a [report](#) released that month by the Governors Highway Safety Association (GHSA) highlighted the continued role [speeding](#) plays in traffic deaths and made recommendations to address the problem. Despite progress in nearly every other area of highway safety, speeding continues to be a factor in approximately one third of traffic deaths every year across the nation and here in Idaho.

The report revealed that a major challenge to the enforcement community is a reduction in state and local law enforcement personnel available to conduct speeding and aggressive driving enforcement efforts. Survey respondents were asked to cite the largest obstacles to addressing speed. Seventy-eight percent selected "public indifference to speeding," while 61 percent selected "public perception that speed enforcement is just a revenue generator." Another 43 percent of respondents cited "lack of federal funding for enforcement." Overall decreases in enforcement efforts can be challenging. Even while Idaho gets better at using crash data to determine locations most in need of speed reduction, the law enforcement community may not be available to target the dangerous areas.

The OHS offers two enforcement periods per year to target aggressive driving on Idaho's roads. The second annual Aggressive Driving Mobilization kicks off August 1-13th. We had forty-seven agencies apply to conduct

enforcement during the two weeks. We are authorizing a total of \$130,000, for aggressive driving enforcement. The enforcement efforts will be accompanied by a statewide “Stop Speeding Before It Stops You” media campaign.

During the campaign we want to hear your opinion about an idea for a future campaign targeting aggressive drivers. It’s a campaign targeting speeders and currently being used by the Oregon Department of Transportation. We want to know if you think it would be an effective way of reaching drivers in Idaho. Go to the ITD Facebook page to check out the “grim” billboard and let us know if you *Like* or *Don’t Like*, by clicking on the link below.

<http://www.facebook.com/#!/photo.php?fbid=10150921887255547&set=a.134438640546.111224.117044135546&type=1&theater>

For information about the August mobilization please contact Josephine O’Connor at joconnor@itd.idaho.gov.

CALENDAR OF EVENTS

If you would like to add an event to the calendar, please send an e-mail with the event details to lisa.losness@itd.idaho.gov

Date	Event Description, Location
July 16, 2012	Alive at 25 , Boise Police Dept., www.idsafedriver.org
July 18, 2012	Alive at 25 Workshop for Certified Instructors , Boise, Idaho
July 19-20, 2012	Northwest Alcohol Conference , Boise, Idaho www.northwestalcoholconference.org
July 24, 2012	Alive at 25 , Orofino Police Dept., www.idsafedriver.org
Aug 17-26, 2012	Western Idaho Fair , Garden City. Inviting partners to participate in Highway Safety Booth! ☺
Sep 25, 2012	Alive at 25 , Orofino Police Dept., www.idsafedriver.org
Sept 30, 2012	The end of Federal Fiscal Year 2012
Nov 20, 2012	Alive at 25 , Orofino Police Dept., www.idsafedriver.org

Quick Reference Guide – click on the topic to go directly to website.

[OHS](#), Office of Highway Safety

[ITD](#), Idaho Transportation Department

[NHTSA](#), National Highway Traffic Safety Administration

[FHWA](#), Federal Highway Administration

[2010 Idaho Crash Report](#)

Program Area	Idaho State Links	Federal Links
Impaired Driving		http://www.nhtsa.gov/Impaired
Distracted Driving	http://www.itd.idaho.gov/ohs/DistractedDriving.htm	http://distraction.gov/
Teen Drivers	http://www.idahoteendiving.org/	http://www.nhtsa.gov/Teen-Drivers
Bike & Pedestrian Safety	http://www.itd.idaho.gov/bike_ped/index_new2.htm	http://www.nhtsa.gov/Pedestrians http://www.nhtsa.gov/Bicycles
Seat Belt Safety	http://www.itd.idaho.gov/ohs/ClickIt/ClickIt2.htm	http://www.nhtsa.gov/Driving+Safety/Occupant+Protection
Child Passenger Safety	http://www.itd.idaho.gov/ohs/ChildSafety/index.html	http://www.nhtsa.gov/Safety/CPS
Aggressive Driving		http://www.nhtsa.gov/Aggressive
Motorcycles	www.idahostar.org	http://www.nhtsa.gov/Safety/Motorcycles
Senior Driving		http://www.nhtsa.gov/Senior-Drivers
Lane Departure	http://itd.idaho.gov/info/home_articles/safety_plan.htm	http://safety.fhwa.dot.gov/roadway_dept