

IDAHO'S METROPOLITAN PLANNING ORGANIZATIONS

WHAT ARE METROPOLITAN PLANNING ORGANIZATIONS?

An MPO is a transportation policy-making and planning body with representatives of local, state, and federal government and transportation authorities. MPOs ensure that transportation planning in urban areas is developed cooperatively and guided by local and public input. MPOs work to balance the planning needs of local communities with the need for statewide connectivity, putting some of the planning process back in the hands of the locals.

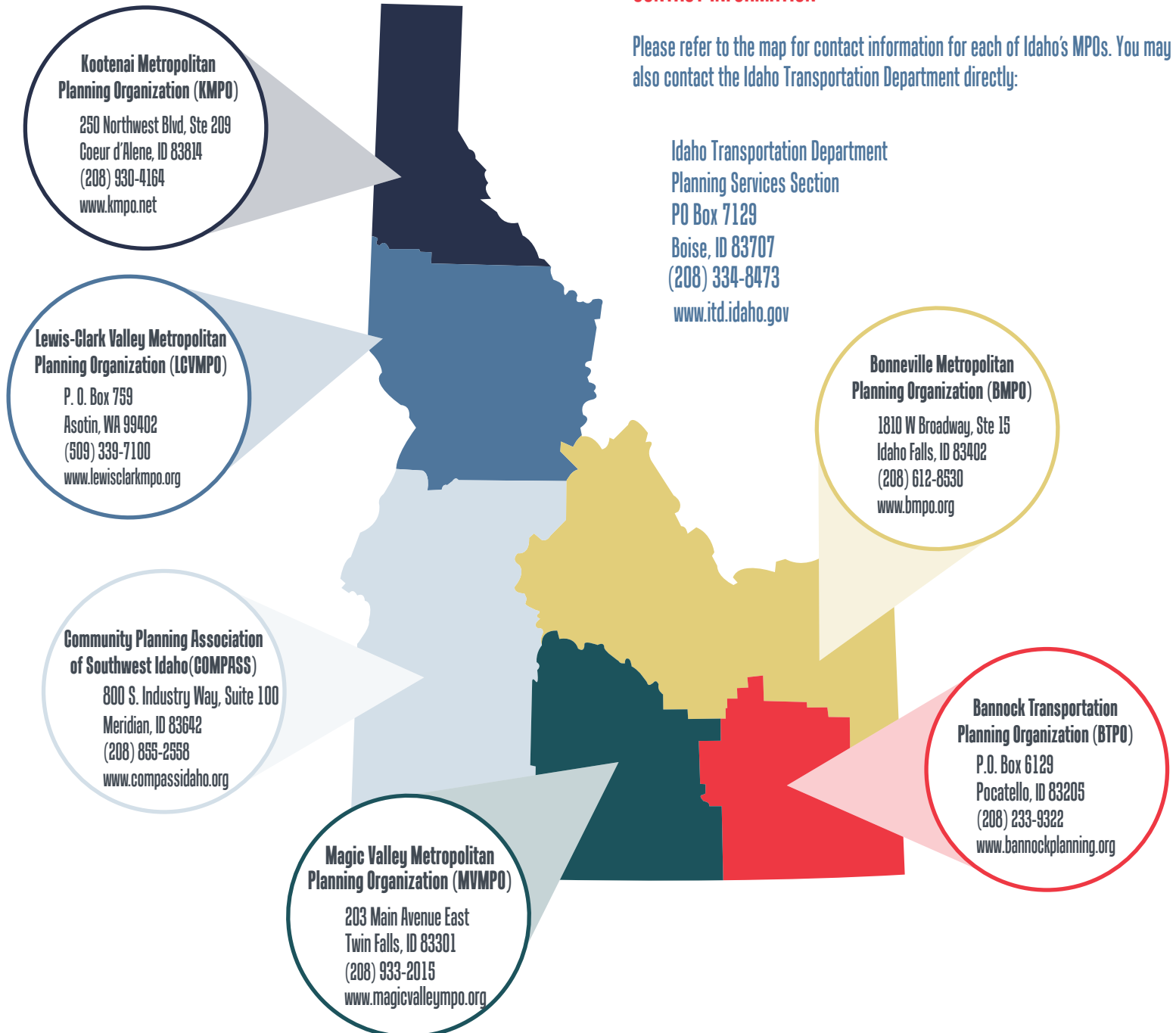
HOW ARE MPOs FUNDED?

MPOs received funding through federal, state, and local sources for their operation. Federal transportation funds are channeled through state departments of transportation to the MPOs, but state and local government entities may also support MPO planning activities with matching grants, employee salaries and benefits, contract oversight, information technology services, and more.

CONTACT INFORMATION

Please refer to the map for contact information for each of Idaho's MPOs. You may also contact the Idaho Transportation Department directly:

Idaho Transportation Department
Planning Services Section
PO Box 7129
Boise, ID 83707
(208) 334-8473
www.itd.idaho.gov



Your Safety • Your Mobility • Your Economic Opportunity