

**BASE SCOPE**

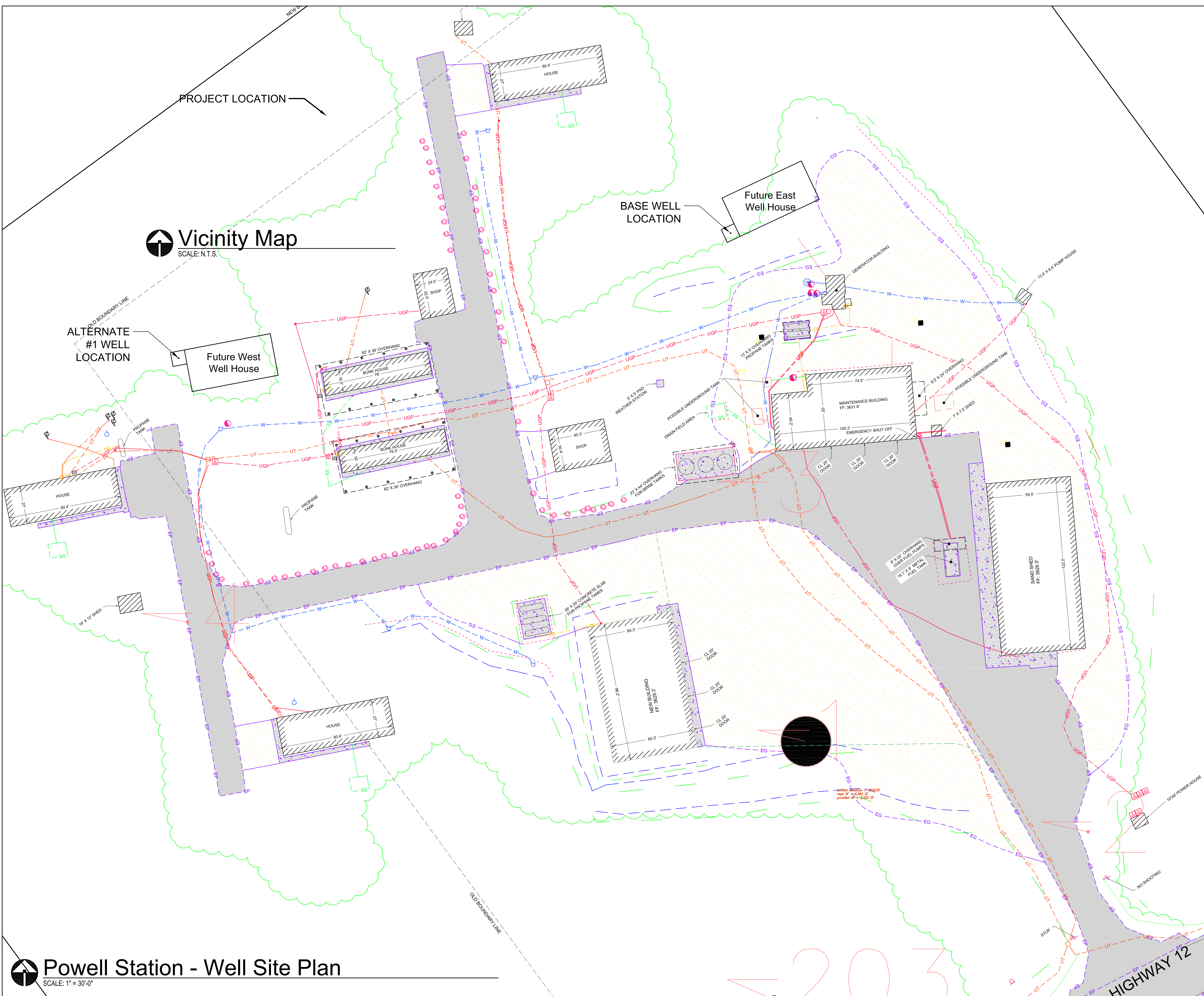
THE BASE SCOPE OF WORK IS TO DRILL AN 8" STEEL CASING DOWN TO 150'-0" FOR THE USE OF POTABLE WATER PRODUCTION. THE SCOPE SHALL INCLUDE A 5 HP SUBMERSIBLE PUMP, CONTROL WIRE, AND POWER WIRE. POWER SUPPLY & WELL HOUSE TO BE BY OTHERS NOT INCLUDED IN SCOPE OF WORK. THE SCOPE OF WORK TO INCLUDE A FROST FREE YARD HYDRANT & STUB FOR FUTURE WATER SYSTEM CONNECTION. THE EAST WELL LOCATION IS THE BASE BID.

**ALTERNATE #1 SCOPE**

THE ALTERNATE #1 SCOPE OF WORK IS TO DRILL AN 8" STEEL CASING DOWN TO 150'-0" FOR THE USE OF POTABLE WATER PRODUCTION AT THE WEST LOCATION NOTED ON PLAN. THE SCOPE SHALL INCLUDE A 5 HP SUBMERSIBLE PUMP, CONTROL WIRE, AND POWER WIRE. POWER SUPPLY & WELL HOUSE TO BE BY OTHERS NOT INCLUDED IN SCOPE OF WORK. THE SCOPE OF WORK TO INCLUDE A FROST FREE YARD HYDRANT & STUB FOR FUTURE WATER SYSTEM CONNECTION. THE EAST WELL LOCATION IS THE BASE BID.

**GENERAL**

1. THE PIPING FROM THE WELL TO BE A 2" SERVICE.
2. ALL WELL PUMPS TO BE SINGLE PHASE, 230V, 3 WIRE, 5 HP, 60 HZ, 45 GPM SUBMERSIBLE PUMP.
3. FROST FREE YARD HYDRANT TO BE A 1" WITH 5'-0" BURY DEPTH, OVERALL LENGTH TO BE 96 1/2".
4. INSTALL FROST FREE YARD HYDRANT 5'-0" FROM WELL LOCATION.
5. EXTEND 2" WATER STUD 10'-0" FROM WELL LOCATION.
6. CAP END OF 2" WATER STUD.
7. INSTALL WATER SERVICE 4" BELOW SURFACE FOR FROST PROTECTION.
8. INSTALL TRACER WIRE ABOVE WATER LINES. TRACER WIRE TO EXTEND TO ABOVE GROUND.
9. INSTALL STAKE AT THE END OF THE WATER LINE STUB. MARK STAKE WITH THE FOLLOWING VERBIAGE " END OF WATER SERVICE"
10. INSTALL POWER WIRE & CONTROL WIRE IN 1" PVC CONDUIT.
11. STUB CONTROL WIRE & POWER 10'-0" FROM WELL. STUD CONDUIT UP 1'-0" FROM T.O. GRADE. PROVIDE ADDITIONAL 10'-0" OF WIRE LENGTH PAST END OF CONDUIT COILED UP. COVER CONDUIT & WIRE WITH 5 GALLON BUCKET. USE BRIGHT BUCKET COLOR FOR HIGH VISIBILITY.
12. INTENT OF SCOPE OF WORK IS TO PROVIDE WELL THAT WILL BE CONNECTED TO A FUTURE WELL HOUSE. INTENT IS TO HAVE THE WIRES AND WATER STUB PREPARED FOR FUTURE CONSTRUCTION.



PROJECT LOCATION



ALTERNATE #1 WELL LOCATION

Future West Well House

BASE WELL LOCATION

Future East Well House