



CONSTRUCTION MANAGERS • GENERAL CONTRACTORS

431 W. McGregor Dr., Boise, ID 83705
P: 208.384.0800 | F: 208.345.5323 | www.cmcompany.com

February 28, 2025

ADDENDUM NO. 3

PROJECT:

ITD D6 Salmon Maintenance Shed Addition and Modifications
41 Highway 93 N
Salmon, ID 83467

Owner:

Idaho Transportation Department
11331 W. Chinden Blvd., Bldg 8
Boise, ID 83714

Architect:

Myers Anderson Architects
122 S Main St. Ste. 1
Pocatello, ID 83204

Construction Manager:

CM Company Inc.
431 West McGregor Drive
Boise, Idaho 83705

Notice to Bidders:

The following addenda applies to the Project Specifications and/or Drawings for this project and shall be a part of the Contract Documents. Receipt of this Addendum must be acknowledged and dated on your bid proposals.

BIDDING:

- 1) Bid Date is unchanged. **Bid date remains Thursday, March 13, 2025** at the time **noted on your bid form.**
- 2) Bids can be turned in at ITD's **District 6** office at **206 N Yellowstone Hwy, Rigby, ID 83442**

General Clarifications:

- 1) Through value-engineering efforts, we have changed the design of the pre-engineered high bay. Instead of a 4:12 roof pitch, we are transitioning to a 2:12 pitch.

ATTACHMENTS:

- 1) Addendum 3 from Myers Anderson Architects
- 2) CM Company's Project Schedule
- 3) CM Company's Site Material Handling Plan

END OF ADDENDUM NO. 3

DOCUMENT 00 91 13

Addendum Number Three

DATE: February 27, 2025

PROJECT: ITD D6 Salmon Maintenance Shed Addition and Modifications
Salmon, Idaho
Demolition and PEMB Bid Packages

ARCHITECT'S PROJECT NO.:23606

OWNER: Idaho Transportation Department
11331 West Chinden Boulevard, Building 8
Boise Idaho 83714

ARCHITECT: Myers Anderson Architects, PLLC
122 South Main Street, Suite 1
Pocatello, Idaho 83204

TO: Prospective Bidders

This Addendum forms a part of the Contract Documents and modifies the Bidding Documents dated January 2025.

Acknowledge receipt of this Addendum in the space provided in the Bid Form. Failure to do so may disqualify the Bidder.

This Addendum consists of three (1) page plus attachments. **Total: two (2) pages.**

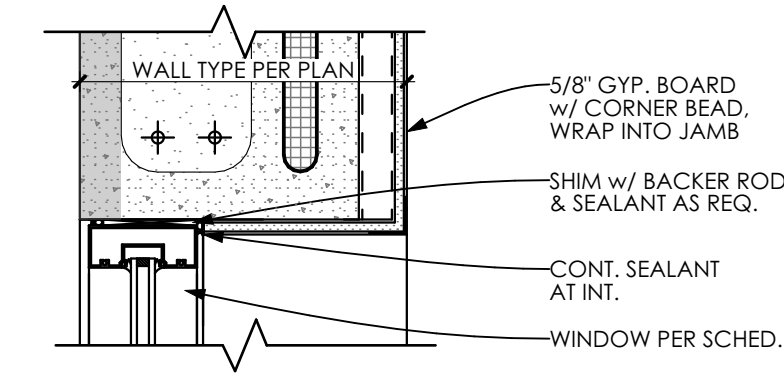
Drawings

1. Roof slope at pre-engineered metal building shall change to a 2:12 pitch. Eave elevations shall remain as indicated on drawing sheets.
2. See attached updated drawing sheet A402 with revised dimensions of windows W14 and W15

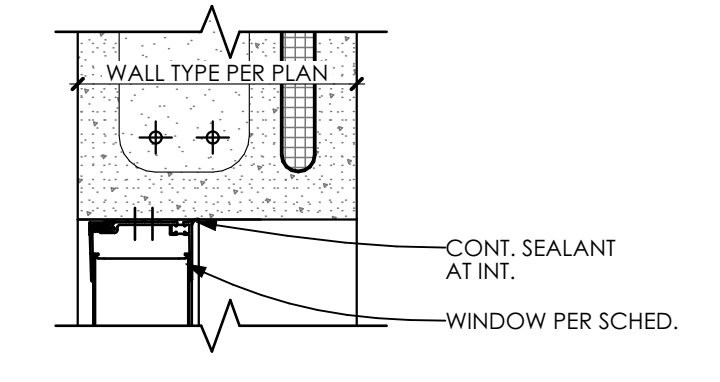
Attachments

A402

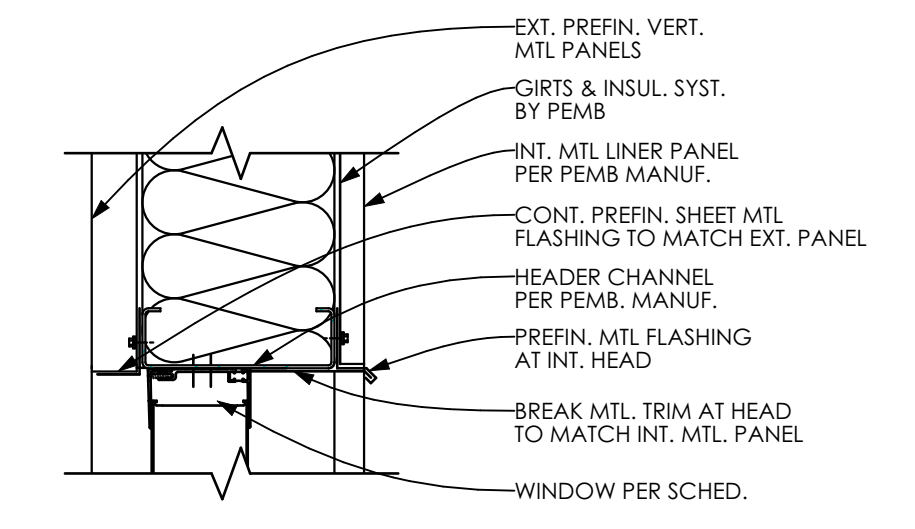
End of Addendum No. 3



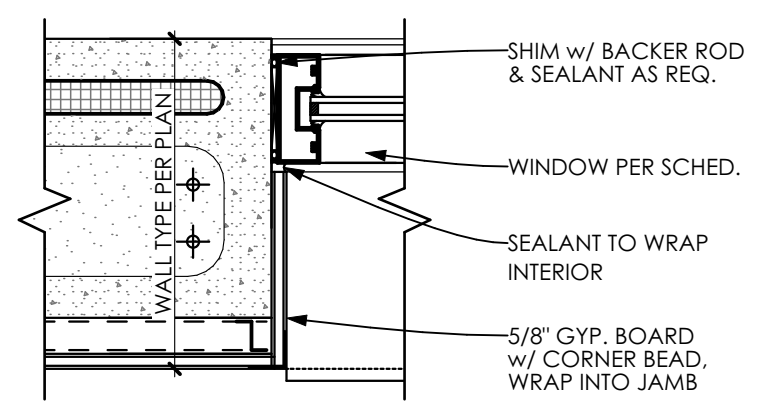
HEAD



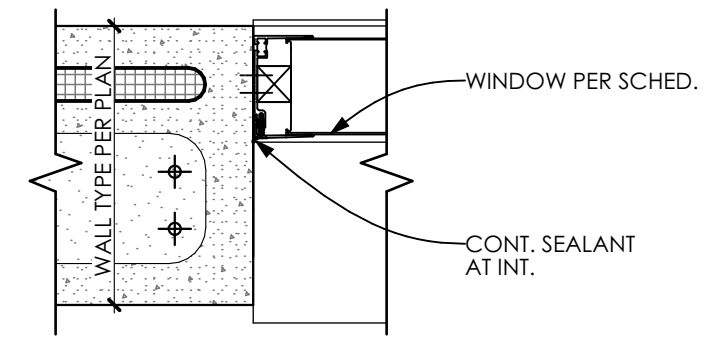
HEAD



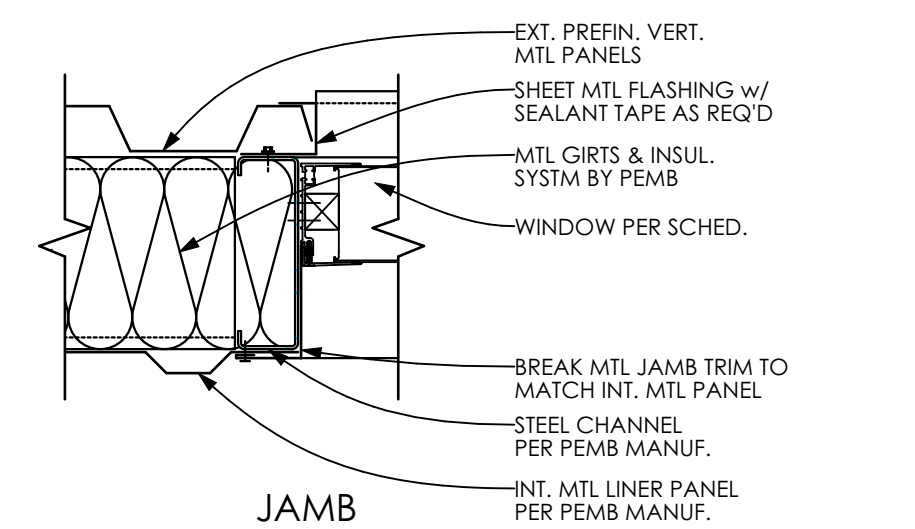
HEAD



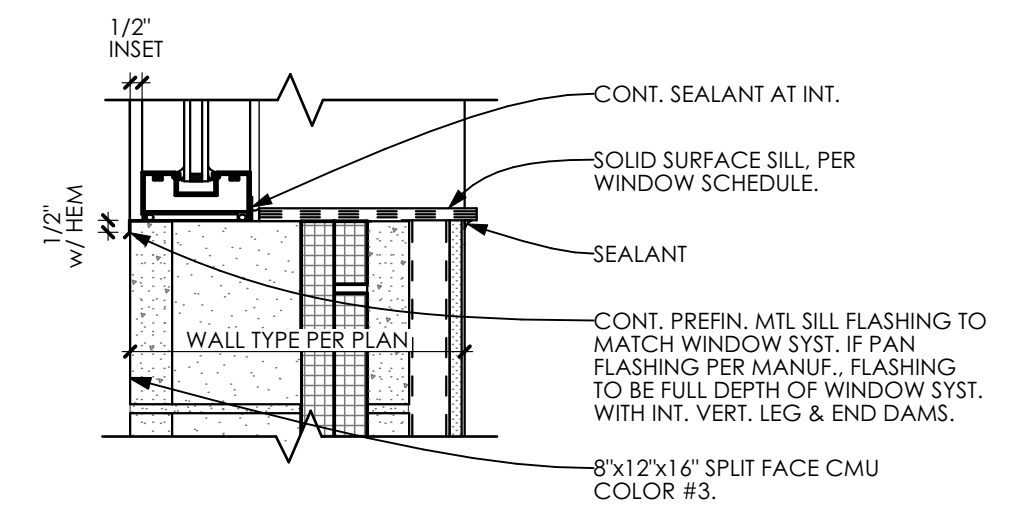
JAMB



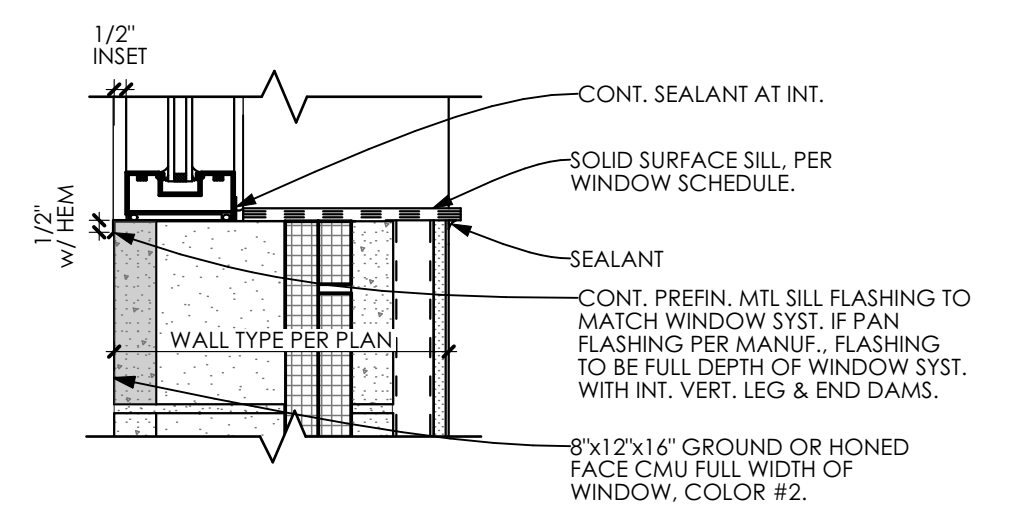
JAMB



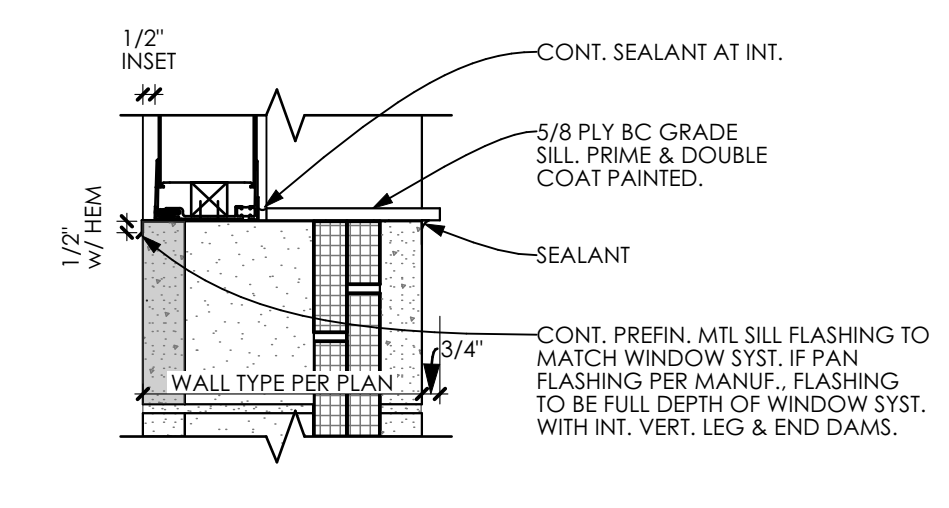
JAMB



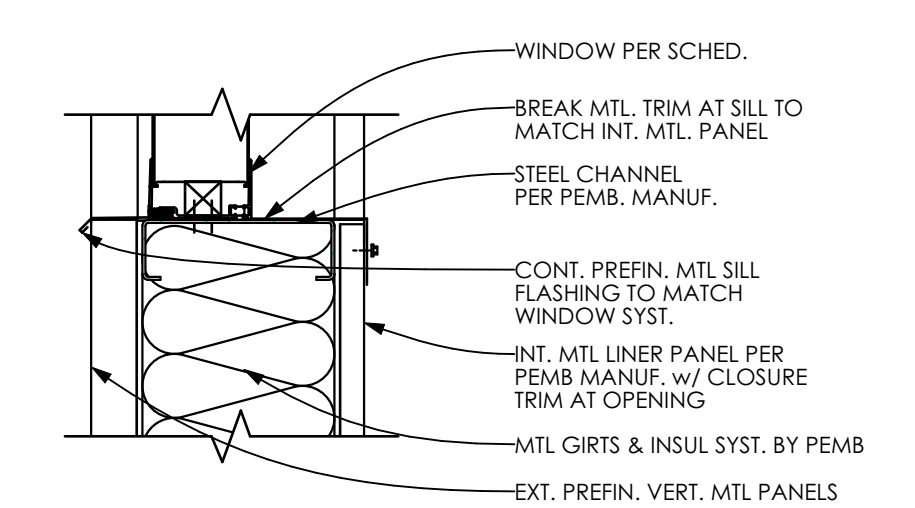
SILL



SILL



SILL



SILL

WINDOW @ B12F

SCALE: 1 1/2" = 1'-0"

4
A402

KALWALL @ B12E

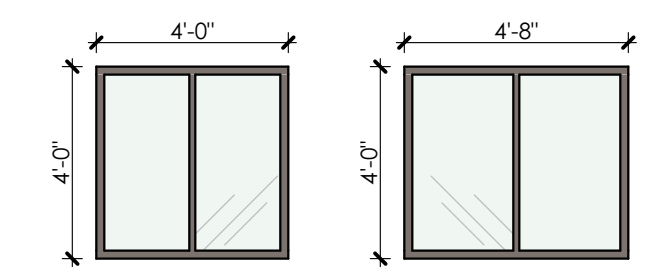
SCALE: 1 1/2" = 1'-0"

3
A402

KALWALL @ P8Z

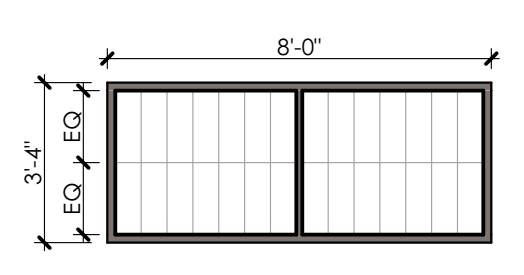
SCALE: 1 1/2" = 1'-0"

2
A402

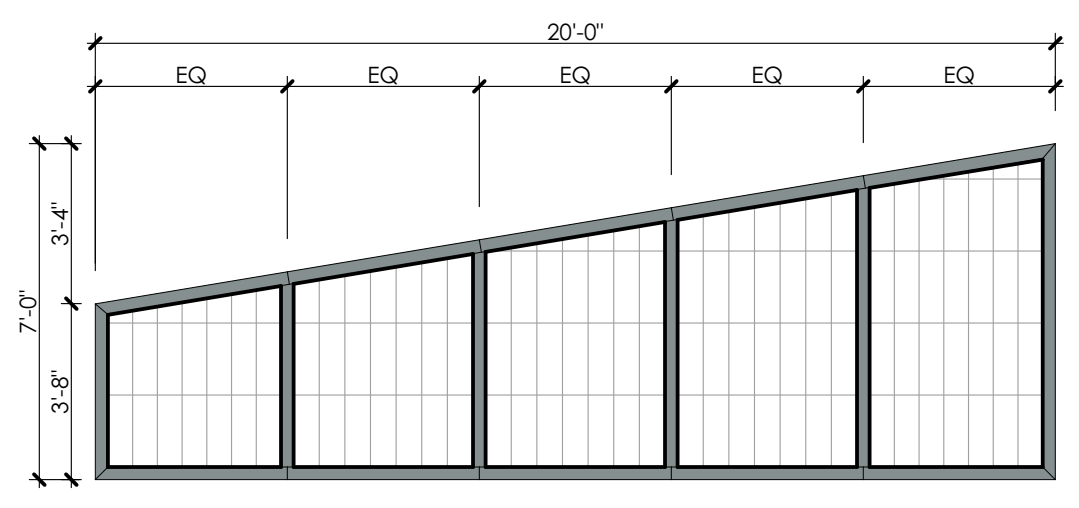


A

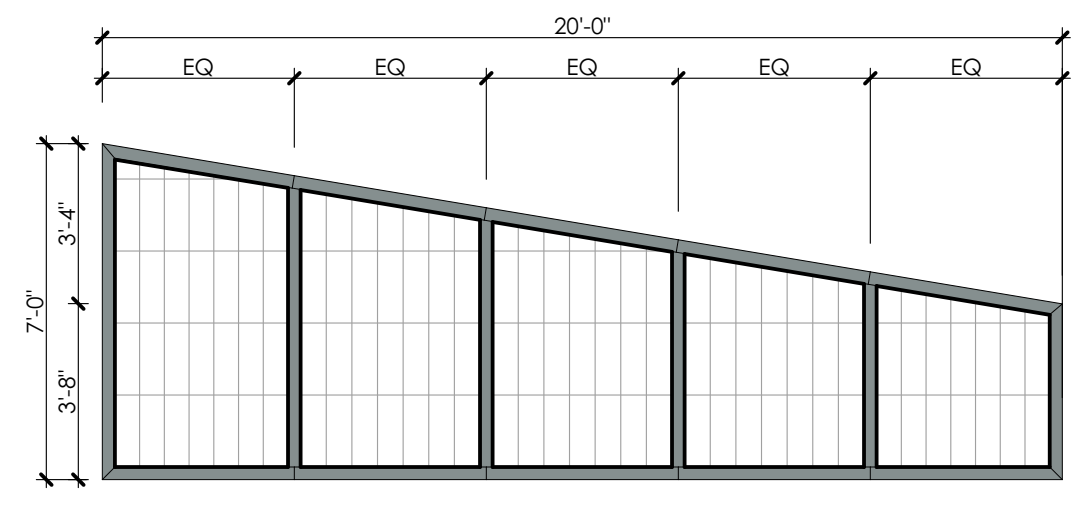
B



D



E



F

WINDOW TYPES

SCALE: 1" = 1'-0"

1
A402

GLASS TYPES	
G-1	1" INSULATED GLASS, TEMPERED
G-2	KALWALL SYSTEM
NOTES:	
1)	SEE SPECIFICATIONS FOR HARDWARE SETS
2)	REFER TO MANUFACTURERS REQUIREMENTS/ SPECIFICATIONS FOR VARIOUS ROUGH OPENINGS REQUIREMENTS.
3)	CONTRACTOR TO PROVIDE FULL WINDOW SHOP DRAWINGS, FOR REVIEW AND APPROVAL PRIOR TO ORDER OR INSTALLATION.
4)	STANDARD COLOR/ FINISH SELECTIONS AT SHOP DRAWING REVIEW.
5)	SEE WINDOW SCHEDULE FOR BLINDS LOCATIONS. (---) NO BLINDS or MANUAL BLIND AT WINDOW WITHIN WINDOW OPENING AND NOT FACE MTD. BASIS OF DESIGN: ROLLER SHADES, LIGHT FILTERING, WITH FASCIA AT HEAD AND FIXED LOOP CORD.
6)	IN WINDOW SCHEDULE COLUMNS - TRIM DETAIL AND WINDOW COVERINGS, THE WINDOW SCHEDULE IDENTIFIES LOCATIONS AND THE DETAILS ARE GENERALIZED.

WINDOW #	WINDOW TYPE	WIDTH	HEIGHT	SILL HEIGHT	HEAD HEIGHT	FRAME TYPE	WINDOW COVERING	GLASS TYPE	TRIM DETAIL	WINDOW DETAIL	NOTES
W01	A	4'-0"	4'-0"	3'-4"	7'-4"	STOREFRONT	MANUAL	G1	SS-1 (SILL) w/ GYP. RTN (JAMBS + HEAD)	4/A402	1; 2; 3; 4; 5; 6
W02	A	4'-0"	4'-0"	3'-4"	7'-4"	STOREFRONT	MANUAL	G1	SS-1 (SILL) w/ GYP. RTN (JAMBS + HEAD)	4/A402	1; 2; 3; 4; 5; 6
W03	A	4'-0"	4'-0"	3'-4"	7'-4"	STOREFRONT	MANUAL	G1	SS-1 (SILL) w/ GYP. RTN (JAMBS + HEAD)	4/A402	1; 2; 3; 4; 5; 6
W04	B	4'-8"	4'-0"	3'-4"	7'-4"	STOREFRONT	MANUAL	G1	SS-1 (SILL) w/ GYP. RTN (JAMBS + HEAD)	4/A402	1; 2; 3; 4; 5; 6
W05	B	4'-8"	4'-0"	3'-4"	7'-4"	STOREFRONT	MANUAL	G1	SS-1 (SILL) w/ GYP. RTN (JAMBS + HEAD)	4/A402	1; 2; 3; 4; 5; 6
W06	B	4'-8"	4'-0"	3'-4"	7'-4"	STOREFRONT	MANUAL	G1	SS-1 (SILL) w/ GYP. RTN (JAMBS + HEAD)	4/A402	1; 2; 3; 4; 5; 6
W07	B	4'-8"	4'-0"	3'-4"	7'-4"	STOREFRONT	MANUAL	G1	SS-1 (SILL) w/ GYP. RTN (JAMBS + HEAD)	4/A402	1; 2; 3; 4; 5; 6
W08	B	4'-8"	4'-0"	3'-4"	7'-4"	STOREFRONT	MANUAL	G1	SS-1 (SILL) w/ GYP. RTN (JAMBS + HEAD)	4/A402	1; 2; 3; 4; 5; 6
W09	D	8'-0"	3'-4"	8'-0"	11'-4"	KALWALL	---	G2	PLY BRD (SILL) w/ CMU RTN (JAMBS + HEAD)	3/A402	1; 2; 3; 4; 5; 6
W10	D	8'-0"	3'-4"	8'-0"	11'-4"	KALWALL	---	G2	PLY BRD (SILL) w/ CMU RTN (JAMBS + HEAD)	3/A402	1; 2; 3; 4; 5; 6
W11	D	8'-0"	3'-4"	8'-0"	11'-4"	KALWALL	---	G2	PLY BRD (SILL) w/ CMU RTN (JAMBS + HEAD)	3/A402	1; 2; 3; 4; 5; 6
W12	D	8'-0"	3'-4"	8'-0"	11'-4"	KALWALL	---	G2	PLY BRD (SILL) w/ CMU RTN (JAMBS + HEAD)	3/A402	1; 2; 3; 4; 5; 6
W13	D	8'-0"	3'-4"	8'-0"	11'-4"	KALWALL	---	G2	PLY BRD (SILL) w/ CMU RTN (JAMBS + HEAD)	3/A402	1; 2; 3; 4; 5; 6
W14	E	20'-0"	7'-0"	20'-0"	27'-0"	KALWALL	---	G2	---	2/A402	1; 2; 3; 4; 5; 6
W15	F	20'-0"	7'-0"	20'-0"	27'-0"	KALWALL	---	G2	---	2/A402	1; 2; 3; 4; 5; 6

Myers Anderson
 Architecture • Interior Design • Historic Preservation
 122 South Main Street • Pocatello, Idaho 83204 • Tel. (208) 232-3741 • Fax. (208) 232-3792

PROJECT NUMBER:
ITD D6 SALMON SHED MAINTENANCE AND ADDITION AND MODIFICATIONS
 SALMON, IDAHO

PROJECT NAME:
ITD D6 SALMON SHED MAINTENANCE AND ADDITION AND MODIFICATIONS
 SALMON, IDAHO

SHEET TITLE:
WINDOW TYPES & SCHEDULE

DRAWING SCALE APPLIES TO 22' X 34' SHEET SIZE

CONTRACTOR SHALL VERIFY ALL DIMENSIONS & CONDITIONS SHOWN OR IMPLIED

DO NOT DISTRIBUTE PARTIAL SETS OF DRAWINGS or SPECIFICATIONS

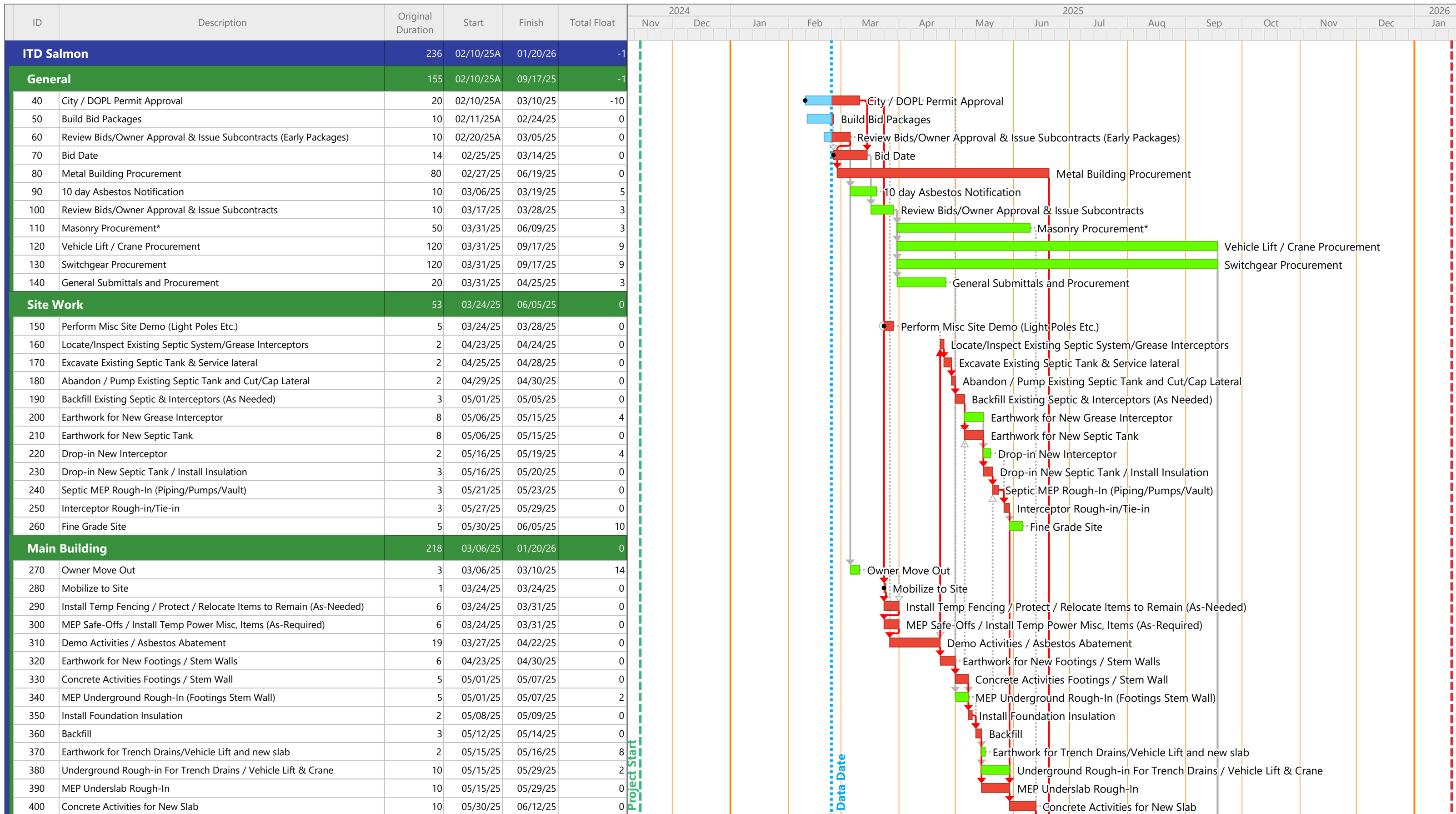
REVISION	DATE

CLIENT PROJ. NUMBER: ---

ARCH. JOB NUMBER: 23606

SHEET ISSUED DATE: February 2025

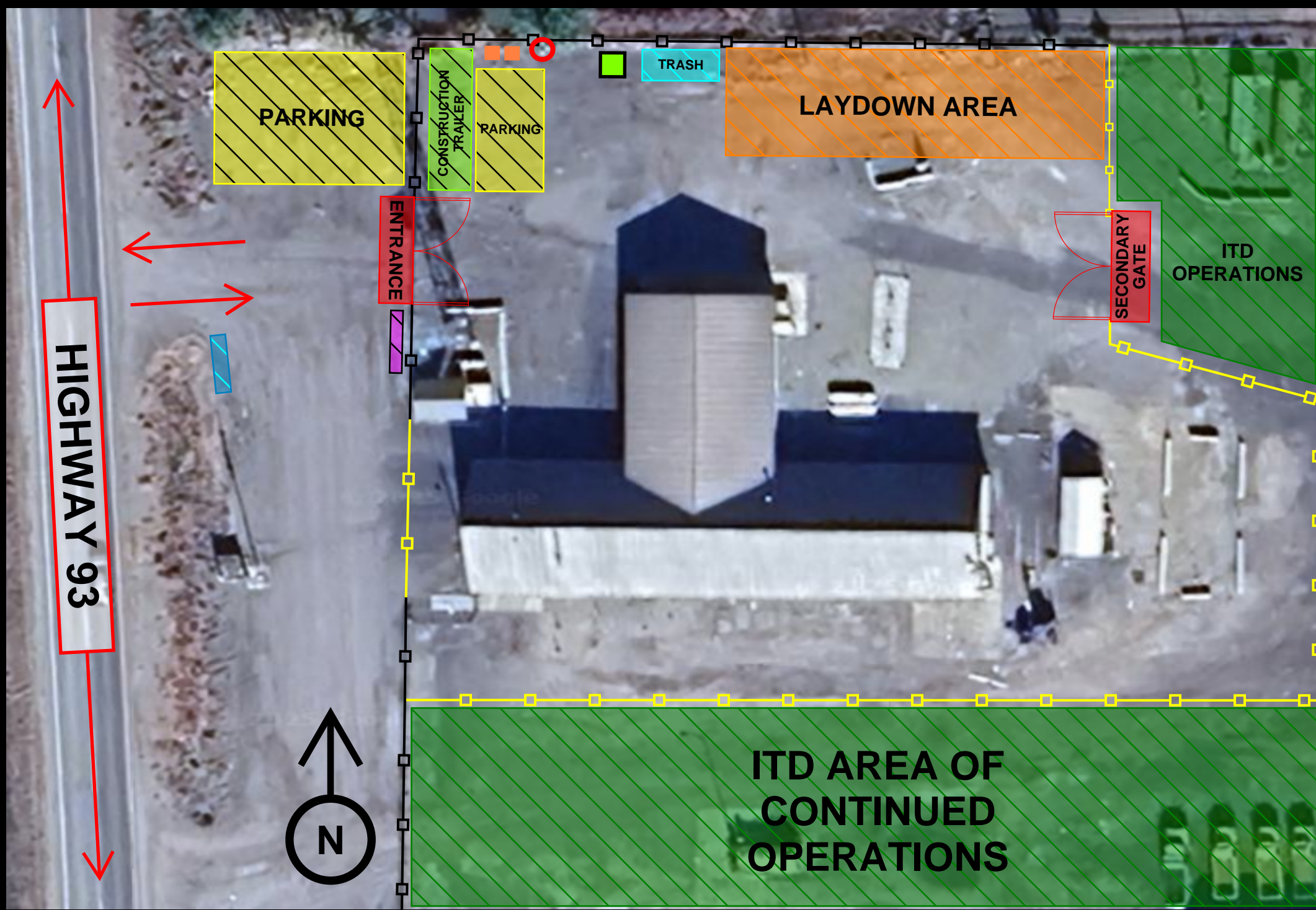
SHEET **A402**



Start Date: 11/14/24
 Finish Date: 01/20/26
 Data Date: 02/24/25
 Run Date: 02/24/25
 ITD Salmon District 6 Maintenance Shed Renovation Bid Schedule.ppx
 Page 1A

2427 - ITD District 6 Salmon Maintenance Shed Renovation
 Bid Schedule





JOBSITE LAYOUT LEGEND

- EXISTING ITD FENCING
- CM ADDITIONAL JOBSITE FENCING
- ENTRANCES
- ITD OPERATIONS TO CONTINUE IN THIS AREA THROUGHOUT CONSTRUCTION
- LAYDOWN AREA
- PARKING
- CONSTRUCTION TRAILER
- TRASH
- CONCRETE WASHOUT
- JOBSITE TEMP POWER TAP-IN
- PORTABLE RESTROOMS
- CM COMPANY SIGN
- JOBSITE INFO BOARD



JOBSITE ADDRESS:

**ITD D6
41 HIGHWAY 93 N.
SALMON, ID. 83467**