

SW 1/4

GENERAL NOTES

1. NEW COLD VEHICLE STORAGE POLE BUILDING
2. NEW 100 AMP OVERHEAD POWER FEED WITH RAINHEAD MOUNTED ON BUILDING - METER TO BE INSTALLED ON BUILDING - DISTRIBUTION PANEL TO BE INSTALLED ON INTERIOR SIDE OF WALL
3. NEW CAST-IN-PLACE CONCRETE RETAINING WALL - REFER TO DETAIL 1/A5.0
4. NEW CONTOUR LINE
5. EXISTING ASPHALT PAVEMENT TO REMAIN AS IS
6. EXISTING BUILDING TO REMAIN AS IS
7. EXISTING POWER POLE TO REMAIN
8. OVERHEAD POWER LINE & TELECOMMUNICATIONS LINE
9. CONCRETE JERSEY BARRIER
10. EXISTING PROPANE TANK
11. BOAT CHECK STATION FACILITY
12. EDGE OF PAVEMENT

GENERAL KEYNOTES

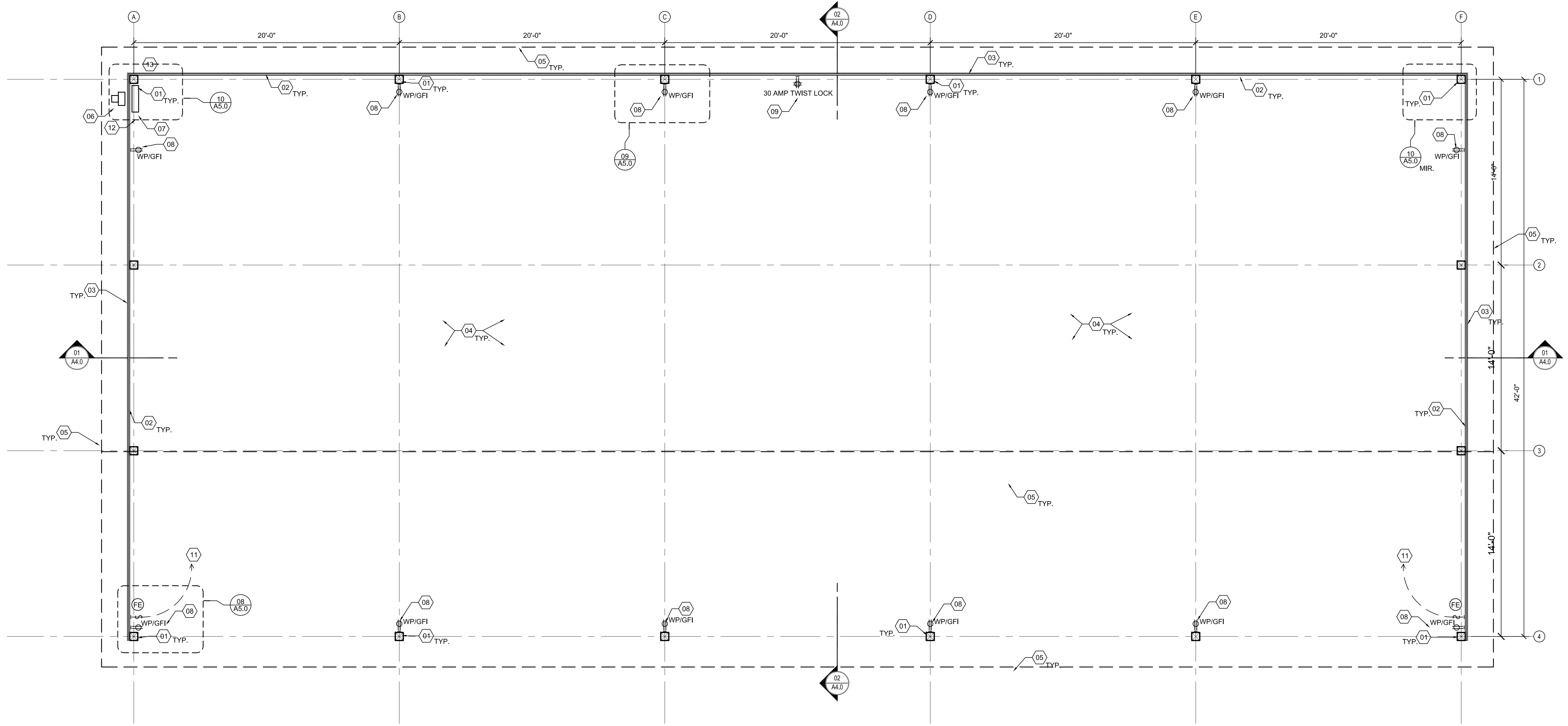
- NOTE: ALL KEYNOTES MAY NOT BE USED IN DRAWINGS
1. NEW COLD VEHICLE STORAGE POLE BUILDING
 2. NEW 100 AMP OVERHEAD POWER FEED WITH RAINHEAD MOUNTED ON BUILDING - METER TO BE INSTALLED ON BUILDING - DISTRIBUTION PANEL TO BE INSTALLED ON INTERIOR SIDE OF WALL
 3. NEW CAST-IN-PLACE CONCRETE RETAINING WALL - REFER TO DETAIL 1/A5.0
 4. NEW CONTOUR LINE
 5. EXISTING ASPHALT PAVEMENT TO REMAIN AS IS
 6. EXISTING BUILDING TO REMAIN AS IS
 7. EXISTING POWER POLE TO REMAIN
 8. OVERHEAD POWER LINE & TELECOMMUNICATIONS LINE
 9. CONCRETE JERSEY BARRIER
 10. EXISTING PROPANE TANK
 11. BOAT CHECK STATION FACILITY
 12. EDGE OF PAVEMENT

s:\bid_cedars_cold_storage\cds\sheet1.0 site plan.dwg

5/3/2023 7:37:59 AM

FLOOR PLAN

SCALE: 1/4" = 1'-0"



FLOOR PLAN KEYNOTES

- NOTE: ALL KEYNOTES MAY NOT BE USED IN DRAWINGS
- 8x8 P.T. COLUMN
 - 2x6 HORIZONTAL GIRTS @ 24" O.C.
 - EXPOSED FASTENER CLASSIC RIB METAL SIDING - COLOR TBD BY ARCHITECT - SELECTED FROM MANUFACTURERS STANDARD COLORS
 - EXPOSED COMPACTED 6" CRUSHED AGGREGATE BASE - SET DOWN 5" TO ALLOW FOR FUTURE (2) 2 1/2" ASPHALT LIFT INSTALLATIONS - SUB BASE TO BE COMPACTED TO 95% COMPACTION
 - EDGE OF ROOF ABOVE - REFER TO ROOF PLAN
 - SINGLE PHASE POWER METER W/ OVERHEAD POWER RAINHEAD - REFER TO SITE PLAN
 - 100 AMP SINGLE PHASE POWER DISTRIBUTION PANEL LOCKABLE
 - GFI DUPLEX POWER OUTLET W/ LOCKABLE OUTDOOR ENCLOSURE
 - 30 AMP 120V SINGLE PHASE TWIST LOCK POWER PLUG
 - 3 WAY SWITCH WITH AUTO SHUT-OFF TIMER CONNECTED TO HIGH-BAY LIGHTS - REFER TO REFLECTED CEILING PLAN
 - CONNECT TO INTERIOR LIGHTS - REFER TO REFLECTED CEILING PLAN
 - EXTERIOR LIGHTS ASTROLOGICAL LIGHT CONTROL - MOUNTING LOCATION
 - PHOTO CELL MOUNTING LOCATION

MILLER STAUFFER
ARCHITECTS

601 E. Front Ave., Ste 201
Burien, OR 97149
P: 503-664-1718 F: 503-664-3914
www.millerstauffer.com

Floor Plan
Bid / Permit Set
05/02/2023

Cedars Cold Storage
22825 E. Canyon Rd
Cataldo, Idaho

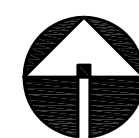
LICENSED ARCHITECT
ARC-60451
MELISSA WILSON
STATE OF IDAHO
5-2-2023

REV. DATE:

PROJECT NO.: 2208	DESIGNED BY: MPW	DRAWN BY: MPW
A2.0		

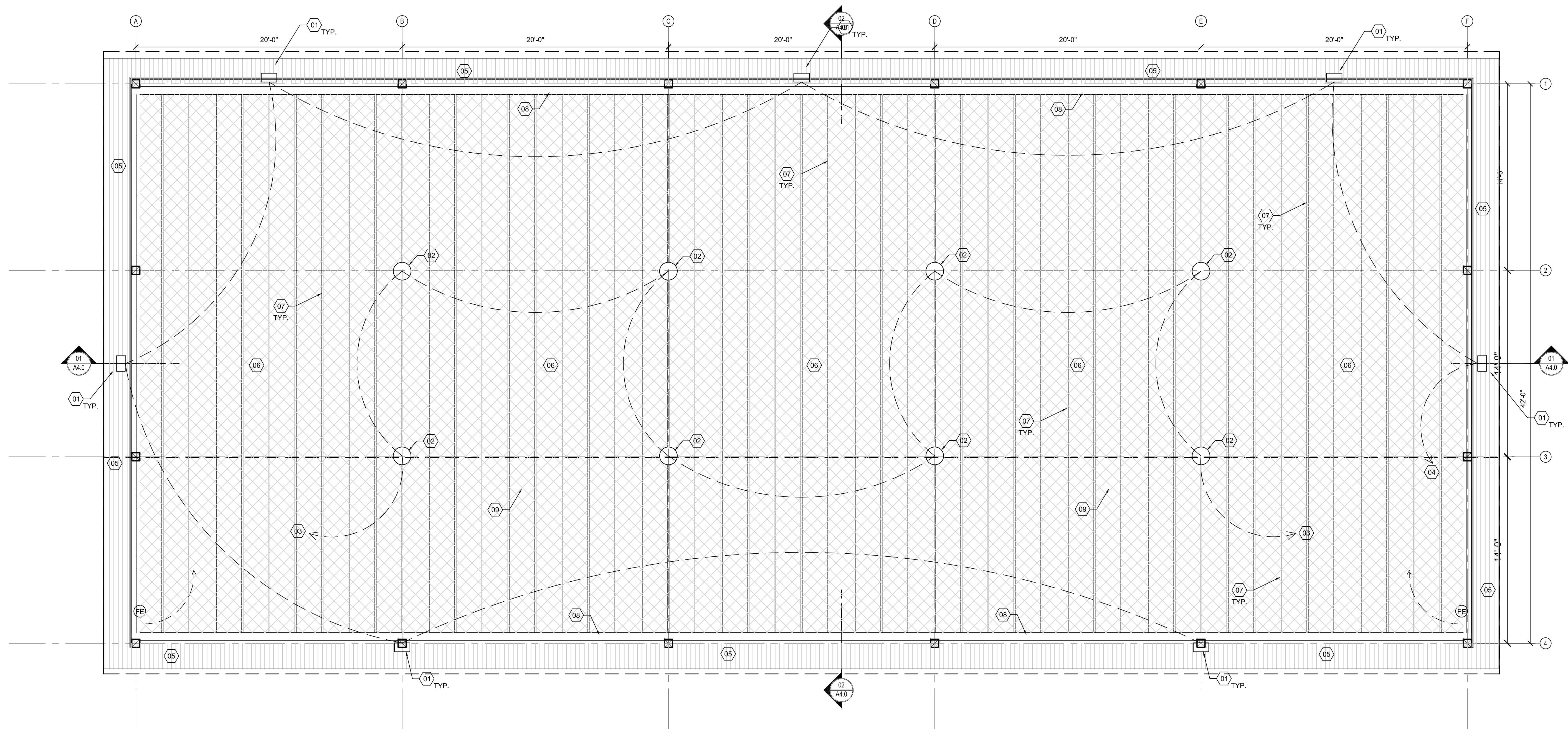
slbtl cedars cold storage/cds/shensha2.1 reflected ceiling plan.dwg

5/3/2023 7:38:59 AM



REFLECTED CEILING PLAN

SCALE: 1/4" = 1'-0"



RCP KEYNOTES

NOTE: ALL KEYNOTES MAY NOT BE USED IN DRAWINGS

1. EXTERIOR COOPER GWC GALLEON WALL LED GWC-SA2B-740-U-T4W-BK - MOUNTED ON WALL - REFER TO EXTERIOR ELEVATIONS
2. COOPER LIGHTING METALUX UHBS SELECTABLE HIGH BAY UHBS-1218-MV-L84050U W/ SURFACE MOUNTED BRACKET
3. CONNECT ALL INTERIOR HIGH-BAY LIGHTS TO A THREE-WAY MANUAL SWITCHES WITH AUTO SHUT-OFF TIMER
4. CONNECT ALL EXTERIOR LIGHTS TO A PHOTO CELL & ASTROLOGICAL LIGHTING CONTROL
5. PRE-FINISHED COLORED 12" METAL SOFFIT W/ TWO PENCIL ACCENT RIBS - CONCEALED FASTENERS
6. SMALL BIRD NETTING ATTACHED TO UNDERSIDE OF PRE-ENGINEERED WOOD TRUSSES
7. PRE-ENGINEERED PLATE WOOD TRUSSES - CONTRACTOR TO SUPPLY ENGINEERED SHOP DRAWINGS BY STATE OF IDAHO STRUCTURAL ENGINEER PRIOR TO TRUSS MANUFACTURING - PAINT TRUSSES PRIOR TO INSTALLATION
8. GLULAM BEAM - PAINTED ALL SURFACES PRIOR TO INSTALLATION
9. ROOF EDGE ABOVE - REFER TO ROOF PLAN

PROJECT NO.: 2208
 DESIGNED BY: MPW
 DRAWN BY: MPW

A2.1

REV. DATE:

LICENSED ARCHITECT
 ARCHITECT
 ARCHITECT

Cedars Cold Storage
 22825 E. Canyon Rd
 Cataldo, Idaho

Reflected Ceiling Plan
 Bid / Permit Set
 05/02/2023

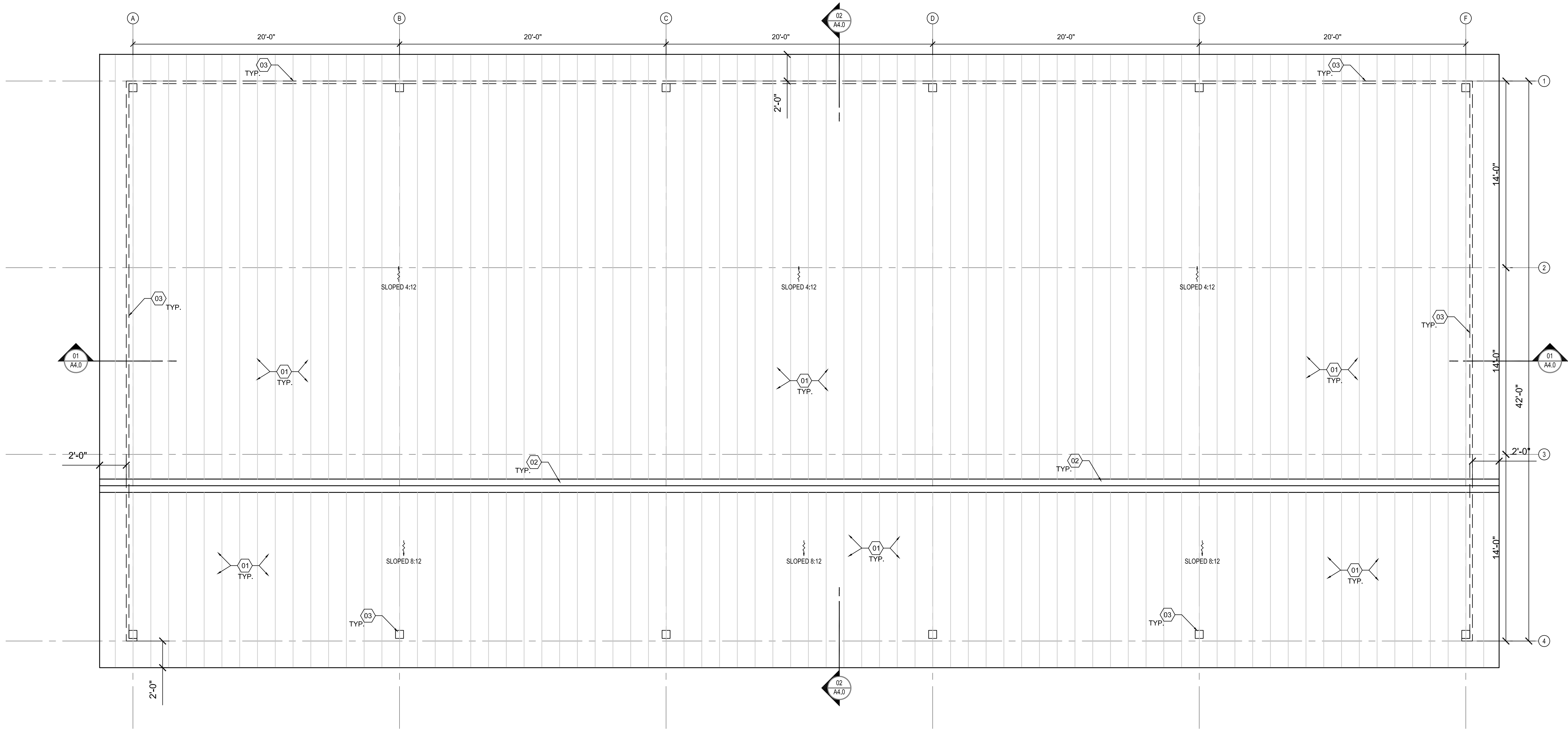
MILLER STAUFFER ARCHITECTS
 601 E. Front Ave., Ste 201
 Burley, ID 83814
 P: 208-664-1718 F: 208-664-3174
 www.millerstauffer.com

skid: cedars cold storage\cds\sheeta2.2 roof plan.dwg

5/3/2023 7:40:16 AM

ROOF PLAN

SCALE: 1/4" = 1'-0"



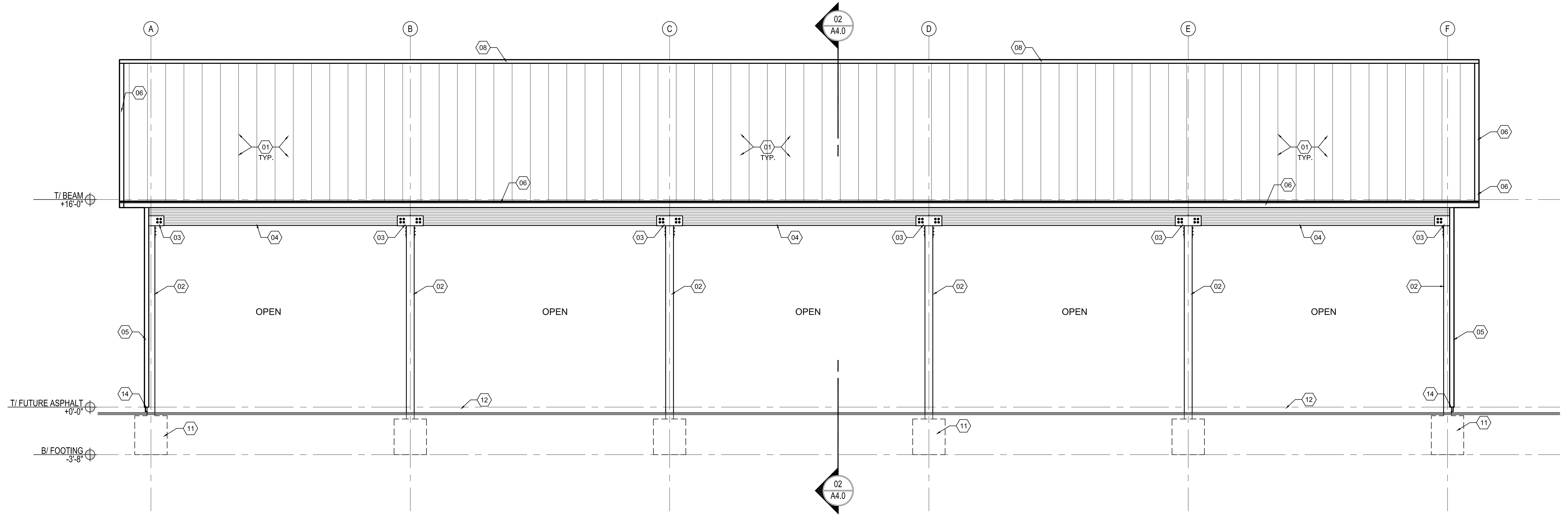
ROOF PLAN KEYNOTES
 NOTE: ALL KEYNOTES MAY NOT BE USED IN DRAWINGS

- EXPOSED FASTENER CLASSIC RIB PRE-FINISHED METAL ROOFING - COLOR TBD BY ARCHITECT FROM MANUFACTURER'S STANDARD COLORS, OVER SYNTHETIC ROOFING UNDERLAYMENT
- CONTINUOUS PRE-FINISHED METAL RIDGE VENT W/ SNOW BAFFLE
- COLUMNS & GIRTS BELOW SHOWN FOR REFERENCE

REV.	DATE	DESCRIPTION

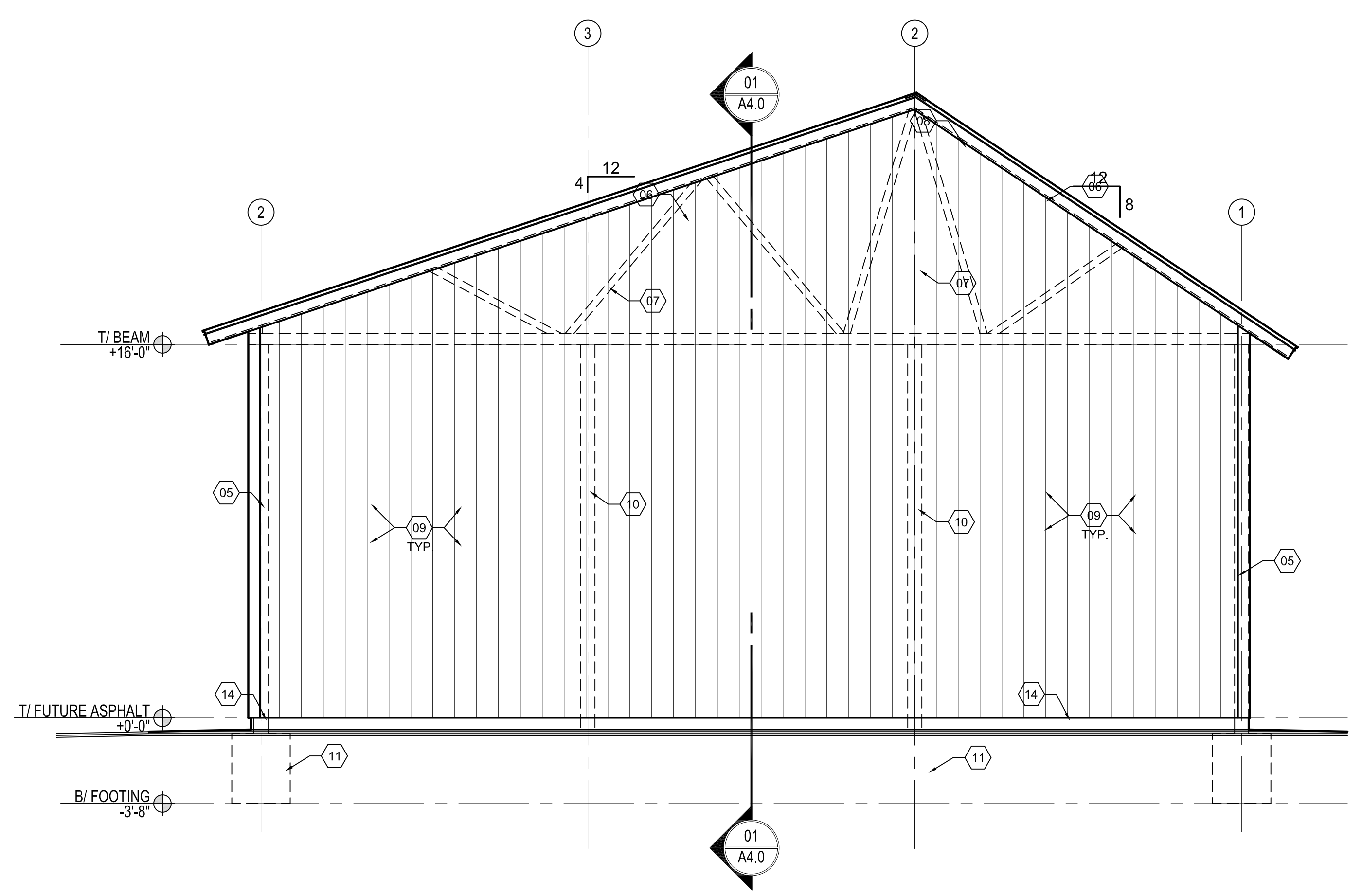
PROJECT NO.: 2208
 DESIGNED BY: MPW
 DRAWN BY: MPW

A2.2



SOUTH BUILDING ELEVATION

SCALE: 1/4" = 1'-0"



WEST BUILDING ELEVATION

SCALE: 1/4" = 1'-0"

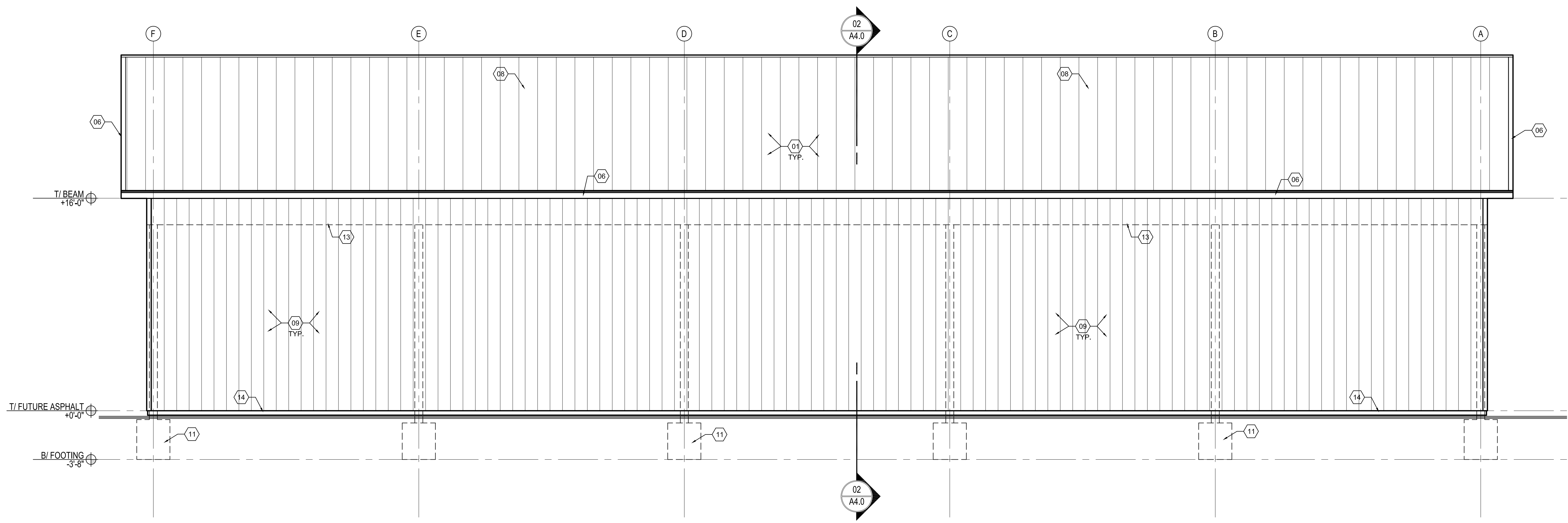
- EXTERIOR ELEVATION KEYNOTES**
NOTE: ALL KEYNOTES MAY NOT BE USED IN DRAWINGS
- PRE-FINISHED COLORED CLASSIC RIB EXPOSED FASTENER METAL ROOFING OVER SYNTHETIC ROOFING UNDERLAYMENT OVER 1/2" PLYWOOD ROOF SHEATHING - ROOFING COLOR TO BE DETERMINED BY ARCHITECT FROM MANUFACTURER'S STANDARD COLORS
 - P.T. 8x8 POST W/ EXTERIOR WATER BASE STAIN & SEALER
 - CUSTOM STEEL SADDLE W/ THRU BOLTS W/ PAINTED PRIMED & PAINTED FINISH (EXTERIOR RATED FINISH)
 - 6 3/4" x 24" GLULAM BEAM W/ EXTERIOR WATER BASE STAIN & SEALER FINISH
 - 6" STANDARD METAL CORNER TRIM
 - PRE-FINISHED METAL FASCIA W/ PRE-FINISHED DRIP EDGE - COLOR TBD, ARCHITECT TO SELECT FROM STANDARD METAL FINISHES & COLOR
 - PRE-ENGINEERED WOOD PLATE TRUSSES @ 24" O.C. - NOTE: AT GABLE TRUSSES HOLD-DOWN TOP CHORD TO ALLOW FOR ROOF OVERHANG FRAMING
 - CONTINUOUS RIDGE VENT W/ BUG SCREEN
 - PRE-FINISHED COLORED CLASSIC RIB EXPOSED FASTENER METAL SIDING - ARCHITECT TO DETERMINE COLOR FROM MANUFACTURER'S STANDARD COLORS
 - P.T. 8x8 POST BEHIND METAL SIDING
 - CONCRETE FOOTING
 - LAY GRAVEL SUB BASE DOWN 5" TO ALLOW FOR FUTURE ASPHALT FLOOR TO BE INSTALLED IN COLD VEHICLE STORAGE FACILITY BY OWNER
 - 6 3/4" x 24" GLULAM BEAM BEHIND METAL SIDING
 - P.T. 2x10 SKIRT BOARD

s:\itd\cedars cold storage\cids\sheet\3.0 exterior elevations.dwg

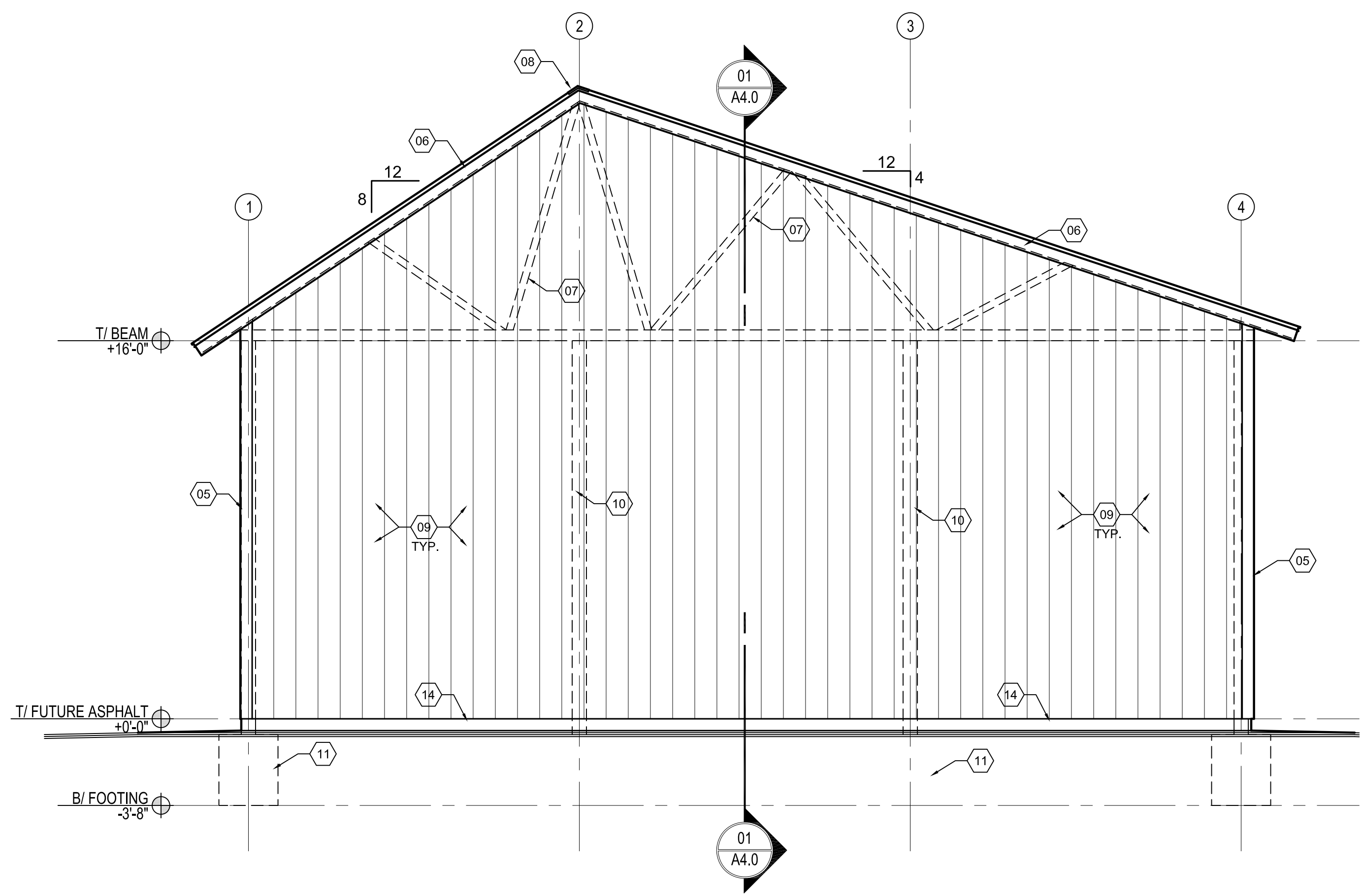
5/3/2023 7:45:16 AM

s:\bldg_cold_storage\cds\sheet\3.0 exterior elevations.dwg

5/3/2023 7:43:54 AM

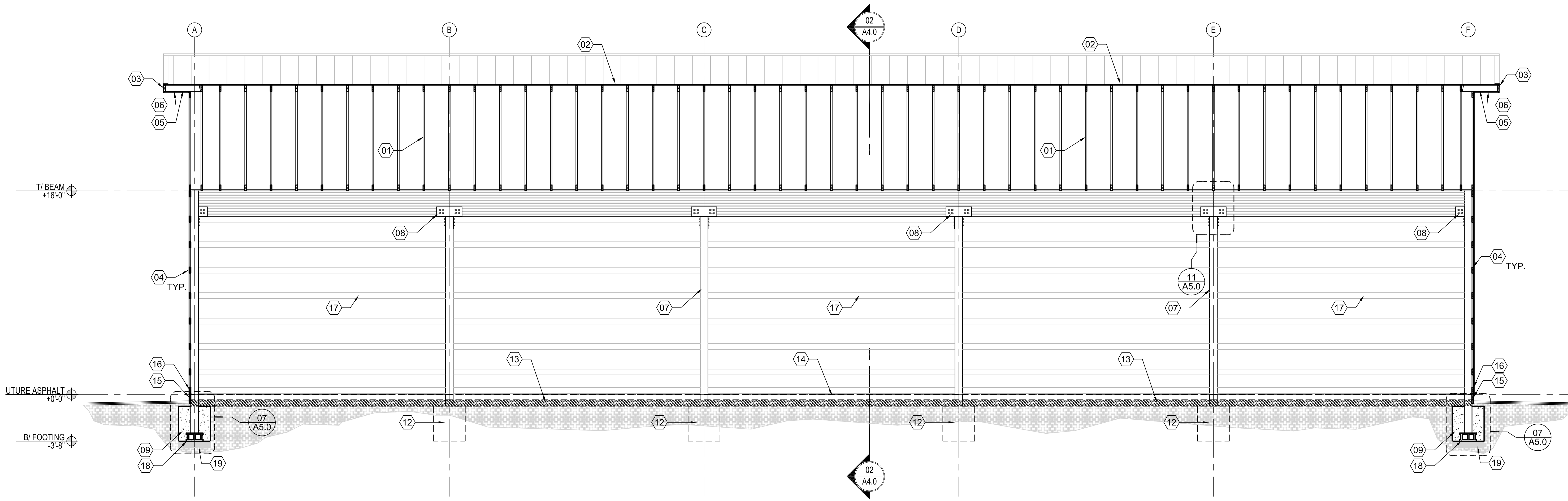


NORTH BUILDING ELEVATION
SCALE: 1/4" = 1'-0"

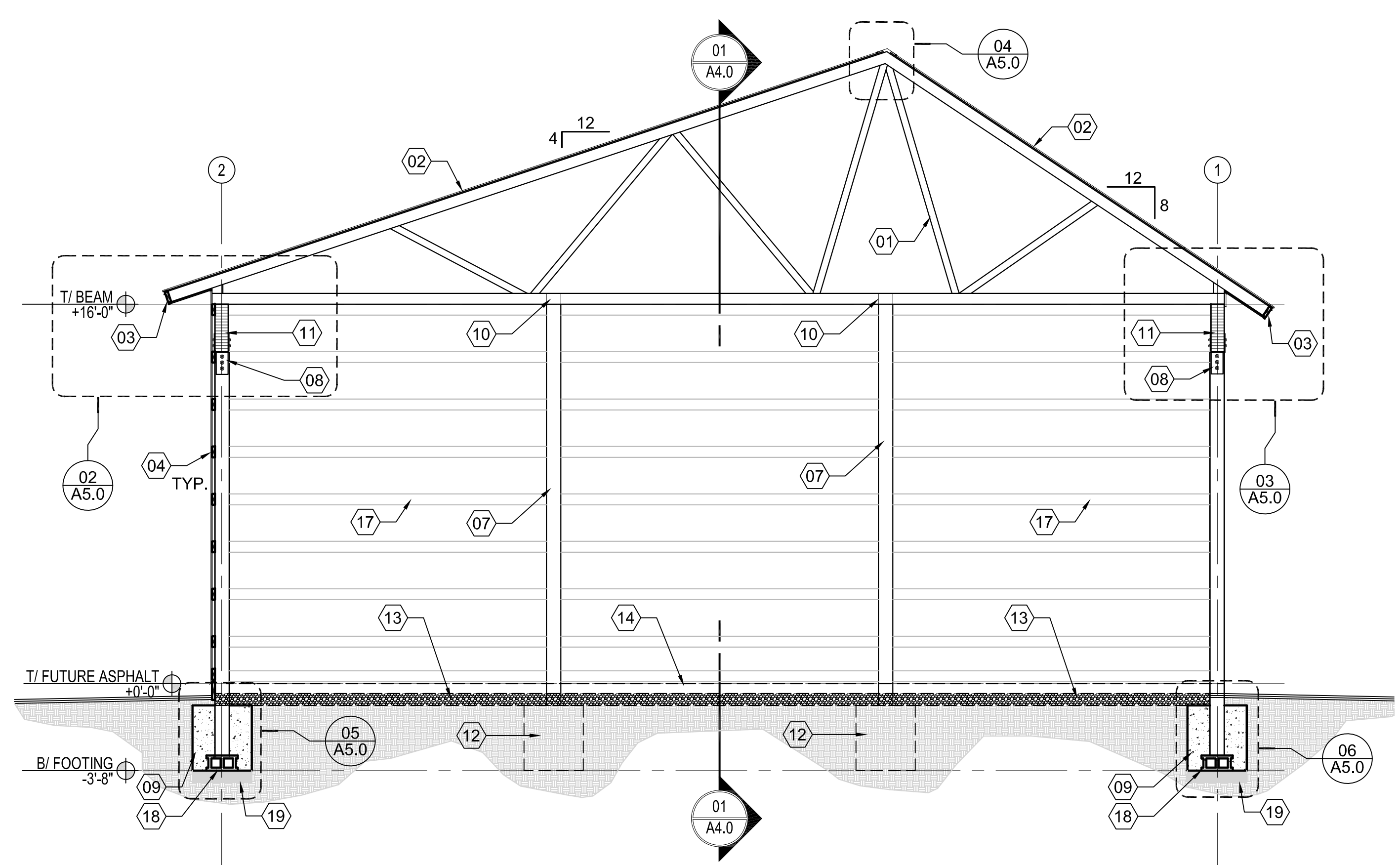


EAST BUILDING ELEVATION
SCALE: 1/4" = 1'-0"

- EXTERIOR ELEVATION KEYNOTES**
NOTE: ALL KEYNOTES MAY NOT BE USED IN DRAWINGS.
- PRE-FINISHED COLORED CLASSIC RIB EXPOSED FASTENER METAL ROOFING OVER SYNTHETIC ROOFING UNDERLAYMENT OVER 19/32 PLYWOOD ROOF SHEATHING - ROOFING COLOR TO BE DETERMINED BY ARCHITECT FROM MANUFACTURES STANDARD COLORS
 - P.T. 8x8 POST W/ EXTERIOR WATER BASE STAIN & SEALER
 - CUSTOM STEEL SADDLE W/ THRU BOLTS W/ PAINTED PRIMED & PAINTED FINISH (EXTERIOR RATED FINISH)
 - 6 3/4" x 24" GLULAM BEAM W/ EXTERIOR WATER BASE STAIN & SEALER FINISH
 - 6" STANDARD METAL CORNER TRIM
 - PRE-FINISHED METAL FASCIA W/ PRE-FINISHED DRIP EDGE - COLOR TBD, ARCHITECT TO SELECT FROM STANDARD METAL FINISHES & COLOR
 - PRE-ENGINEERED WOOD PLATE TRUSSES @ 24" O.C. - NOTE: AT GABLE TRUSSES HOLD-DOWN TOP CHORD TO ALLOW FOR ROOF OVERHANG FRAMING
 - CONTINUOUS RIDGE VENT W/ BUG SCREEN
 - PRE-FINISHED COLORED CLASSIC RIB EXPOSED FASTENER METAL SIDING - ARCHITECT TO DETERMINE COLOR FROM MANUFACTURES STANDARD COLORS
 - P.T. 8x8 POST BEHIND METAL SIDING
 - CONCRETE FOOTING
 - LAY GRAVEL SUB BASE DOWN 5" TO ALLOW FOR FUTURE ASPHALT FLOOR TO BE INSTALLED IN COLD VEHICLE STORAGE FACILITY BY OWNER
 - 6 3/4" x 24" GLULAM BEAM BEHIND METAL SIDING
 - P.T. 2x10 SKIRT BOARD



01 BUILDING SECTION
SCALE: 3/16" = 1'-0"



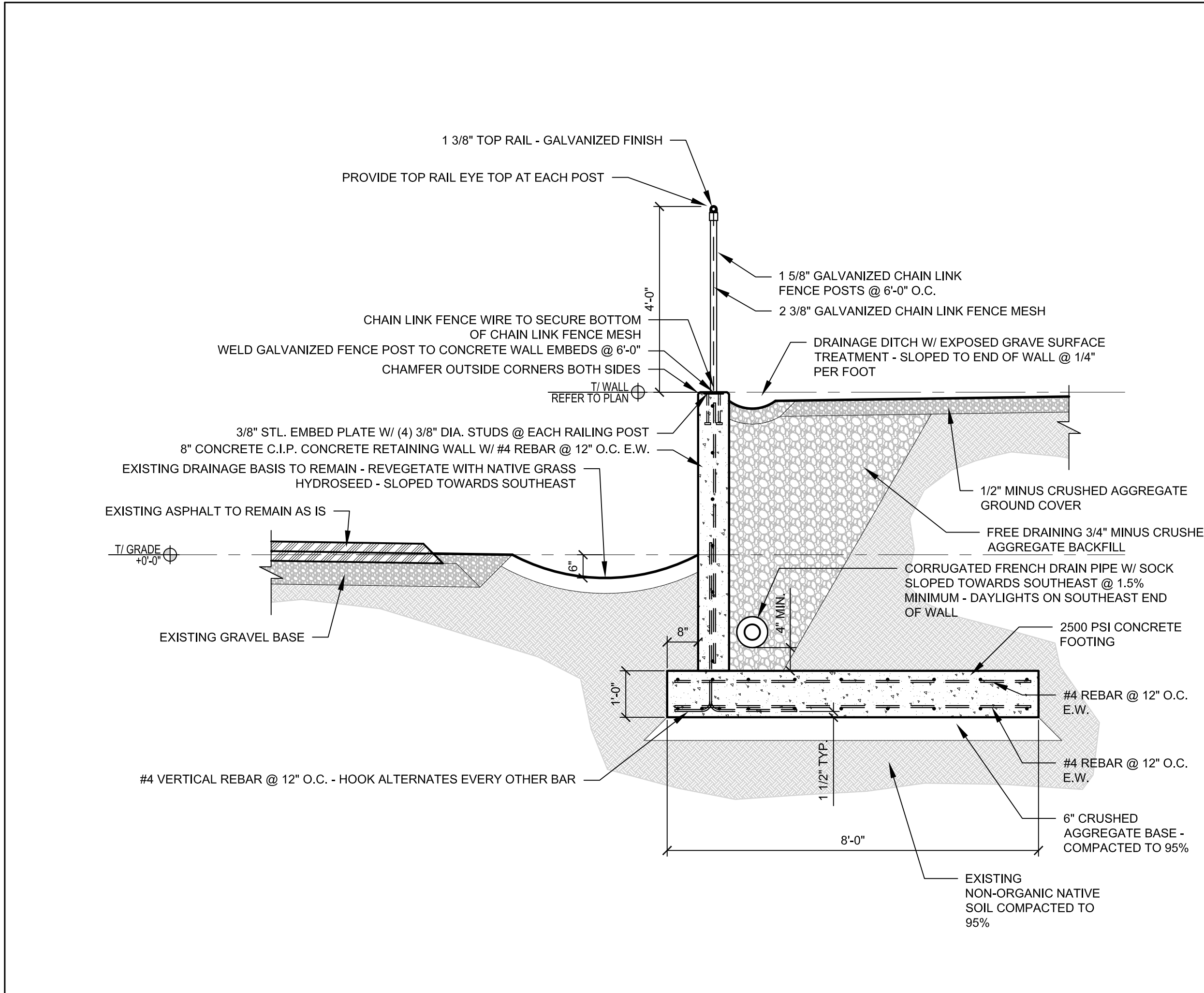
02 BUILDING SECTION
SCALE: 3/16" = 1'-0"

⊗ BUILDING SECTION KEYNOTES

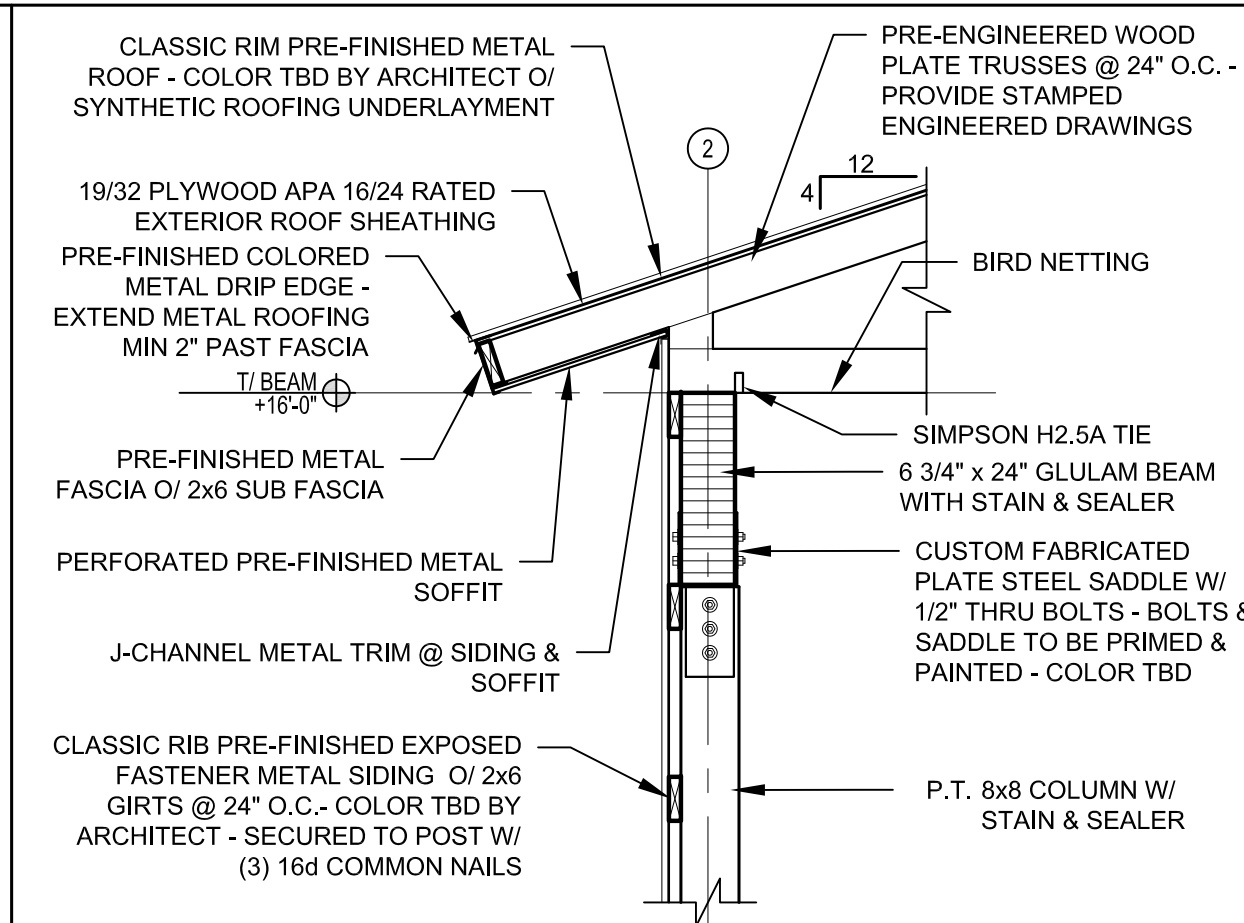
- NOTE: ALL KEYNOTES MAY NOT BE USED IN DRAWINGS.
- PRE-ENGINEERED WOOD PLATE TRUSSES @ 24" O.C.
 - PRE-FINISHED COLORED CLASSIC RIB EXPOSED FASTENER METAL ROOFING OVER SYNTHETIC ROOFING UNDERLAYMENT OVER 19/32 PLYWOOD ROOF SHEATHING - ROOFING COLOR TO BE DETERMINED BY ARCHITECT FROM MANUFACTURERS STANDARD COLORS
 - PRE-FINISHED METAL FASCIA & DRIP EDGE - COLOR TO BE DETERMINED BY ARCHITECT FROM MANUFACTURERS STANDARD COLOR SELECTION
 - PRE-FINISHED COLORED CLASSIC RIB EXPOSED FASTENER METAL SIDING
 - 2x6 OUTLOOKERS @ 24" O.C. W/ INVERTED SIMPSON LUS26 HANGER @ EACH OUTLOOKER
 - PERFORATED PRE-FINISHED METAL SOFFIT - COLOR TO BE SELECTED BY ARCHITECT FROM MANUFACTURERS STANDARD COLOR SELECTION.
 - 8x8 P.T. WOOD COLUMN - STAIN & SEAL - TYPICAL
 - CUSTOM FABRICATED STEEL PLATE SADDLE W/ THROUGH BOLTS - PAINTED FINISH
 - 30" DIAMETER 2500 PSI CONCRETE FOUNDATION W/ STEEL REINFORCEMENT - TYPICAL
 - LET IN TRUSS INTO 8x8 POST AS SHOWN
 - 6 3/4" x 24" GLULAM COLUMN W/ STAIN & SEALER
 - CONCRETE PIER BEYOND SHOWN FOR REFERENCE
 - 6" CRUSHED AGGREGATE BASE - 3/4" MINUS COMPACTED TO 95%
 - AGGREGATE BAS TO BE HELD DOWN 5" FOR FUTURE ASPHALT FLOOR BY OWNER
 - P.T. 2x10 SKIRT - T.O. BOARD TO BE 0'-0"
 - P.T. 2x6 GIRTS - B.O. BOARD TO BE 0'-0"
 - 2x6 GIRTS @ 24" O.C. SHOWN BEYOND
 - 8x8x16 CMU BLOCK SET AT BOTTOM OF HOLE TO HOLD P.T. POST OFF BOTTOM OF HOLE
 - 6" CRUSHED AGGREGATE STRUCTURAL FILL TO BE PLACED BEFORE CMU BLOCK, P.T. POST, AND CONCRETE FOOTING - TAMPED IN PLACE TO 95%

stltd_02dars cold storage\cds\sheet\A4.0 building sections.dwg

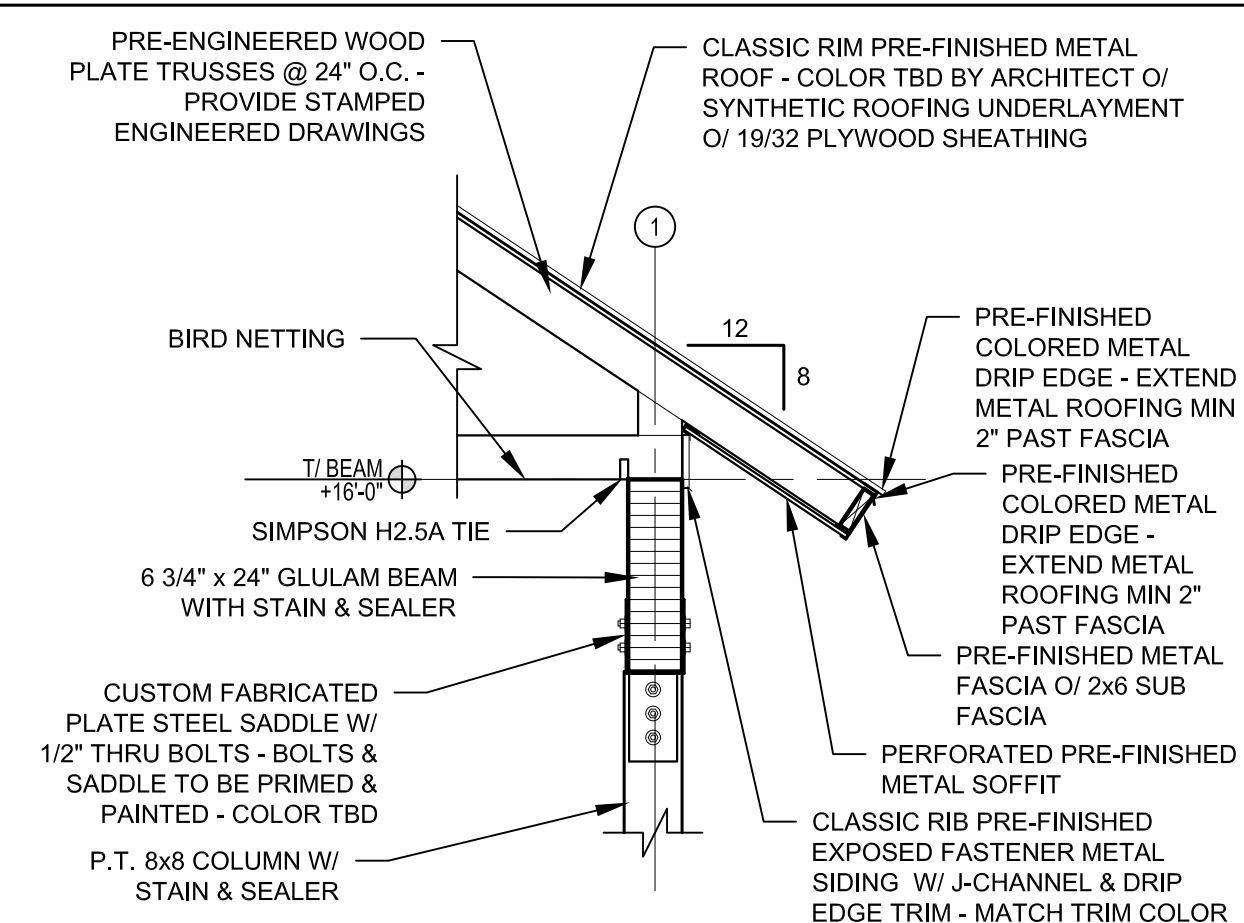
5/3/2023 8:12:48 AM



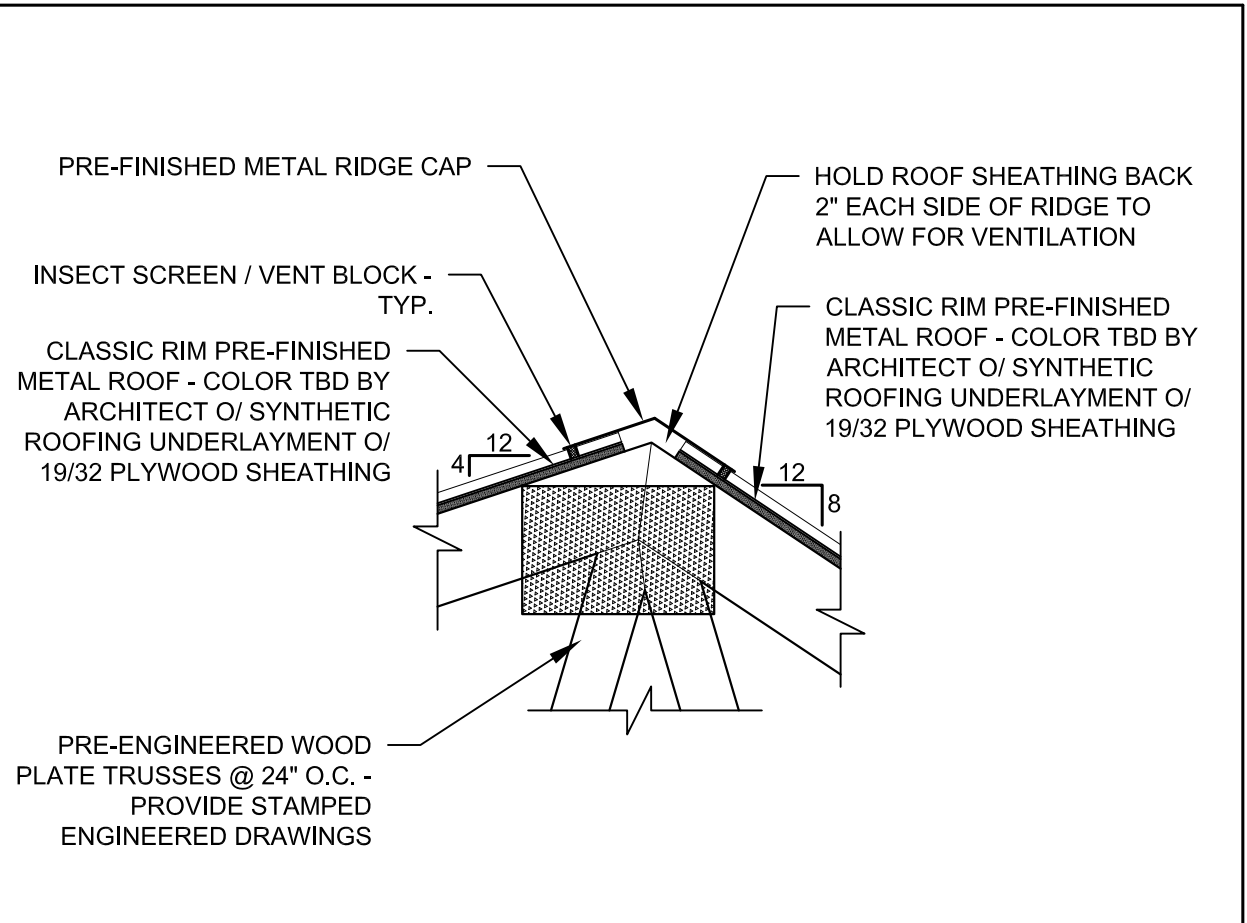
01 Retaining Wall Dtl.
SCALE: 1/2" = 1'-0"



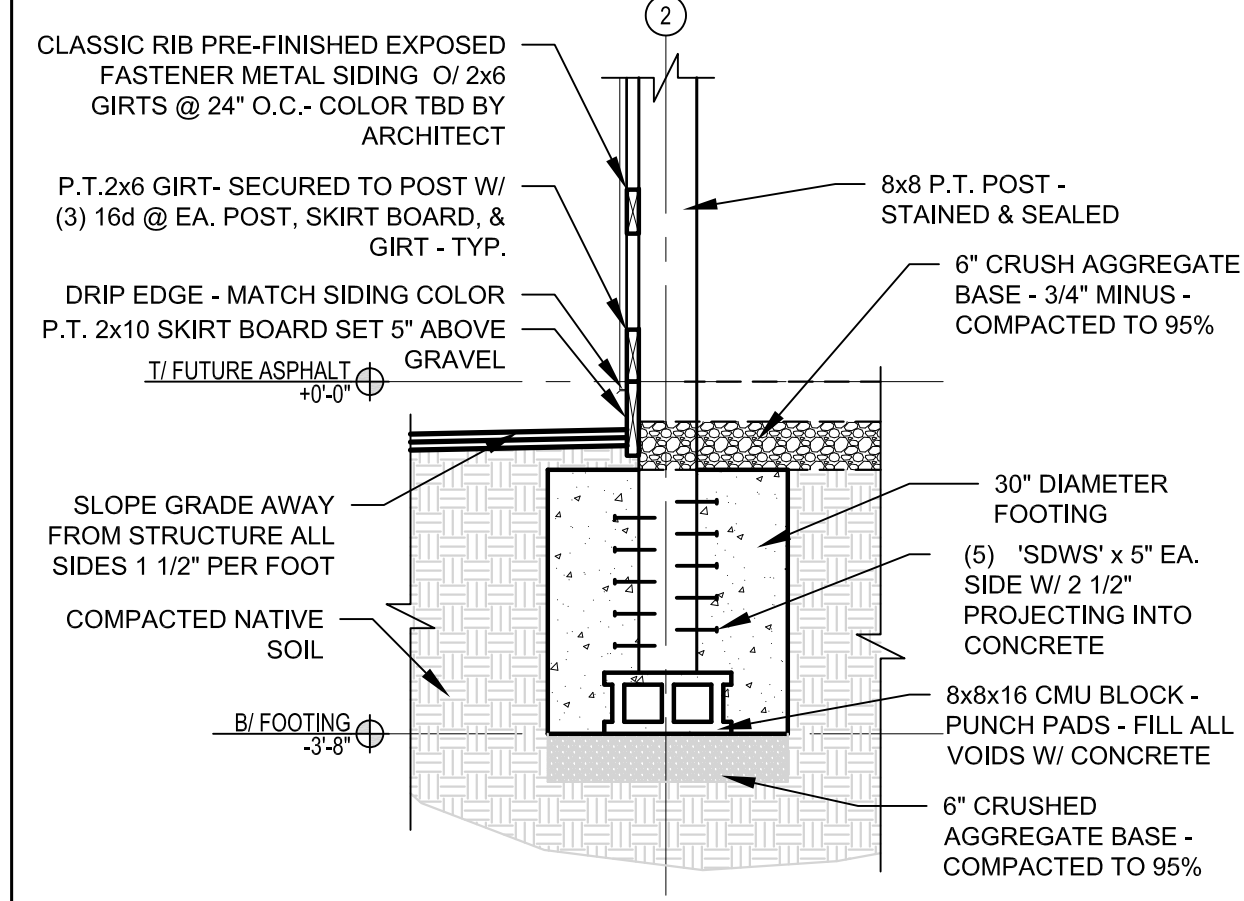
02 Fascia / Soffit Detail
SCALE: 1/2" = 1'-0"



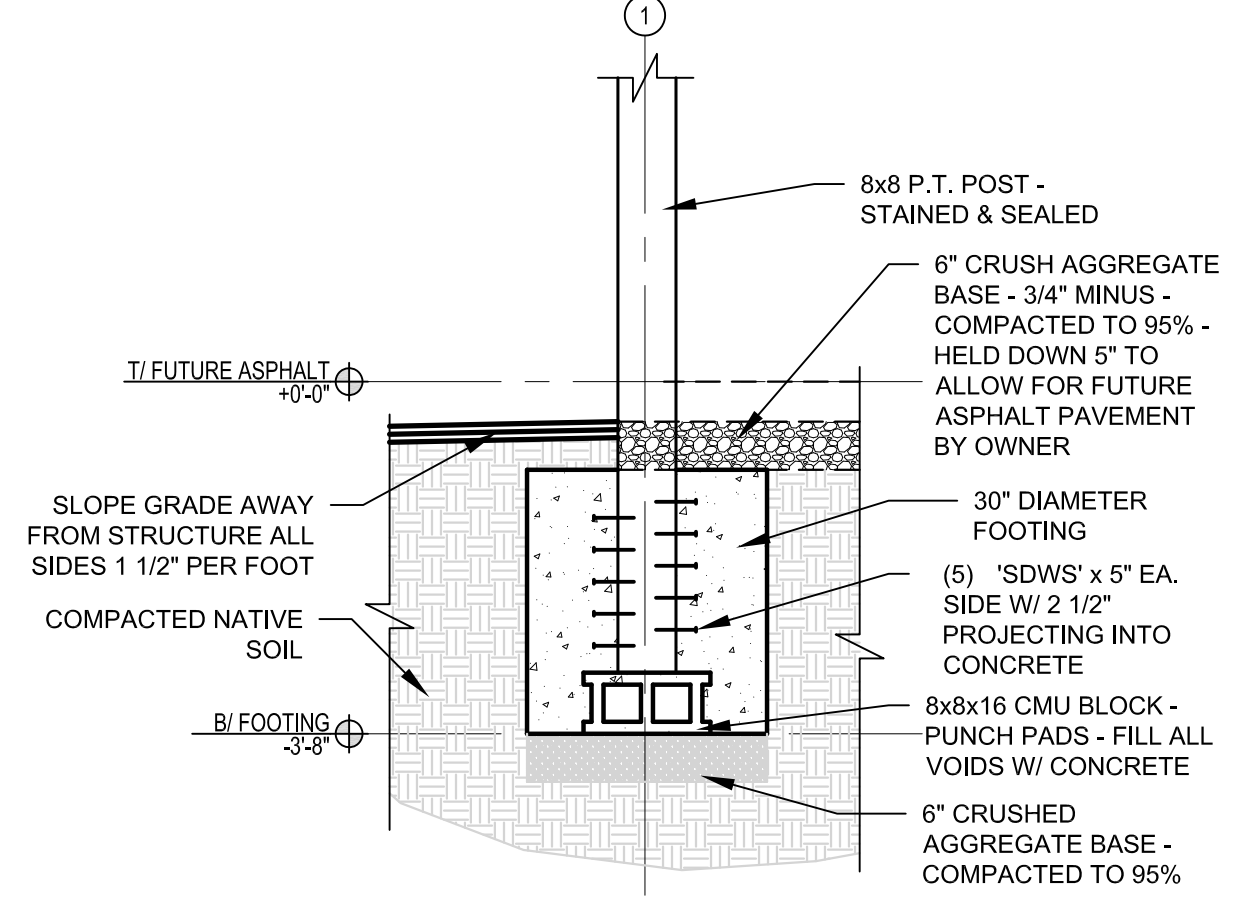
03 Fascia / Soffit Detail
SCALE: 1/2" = 1'-0"



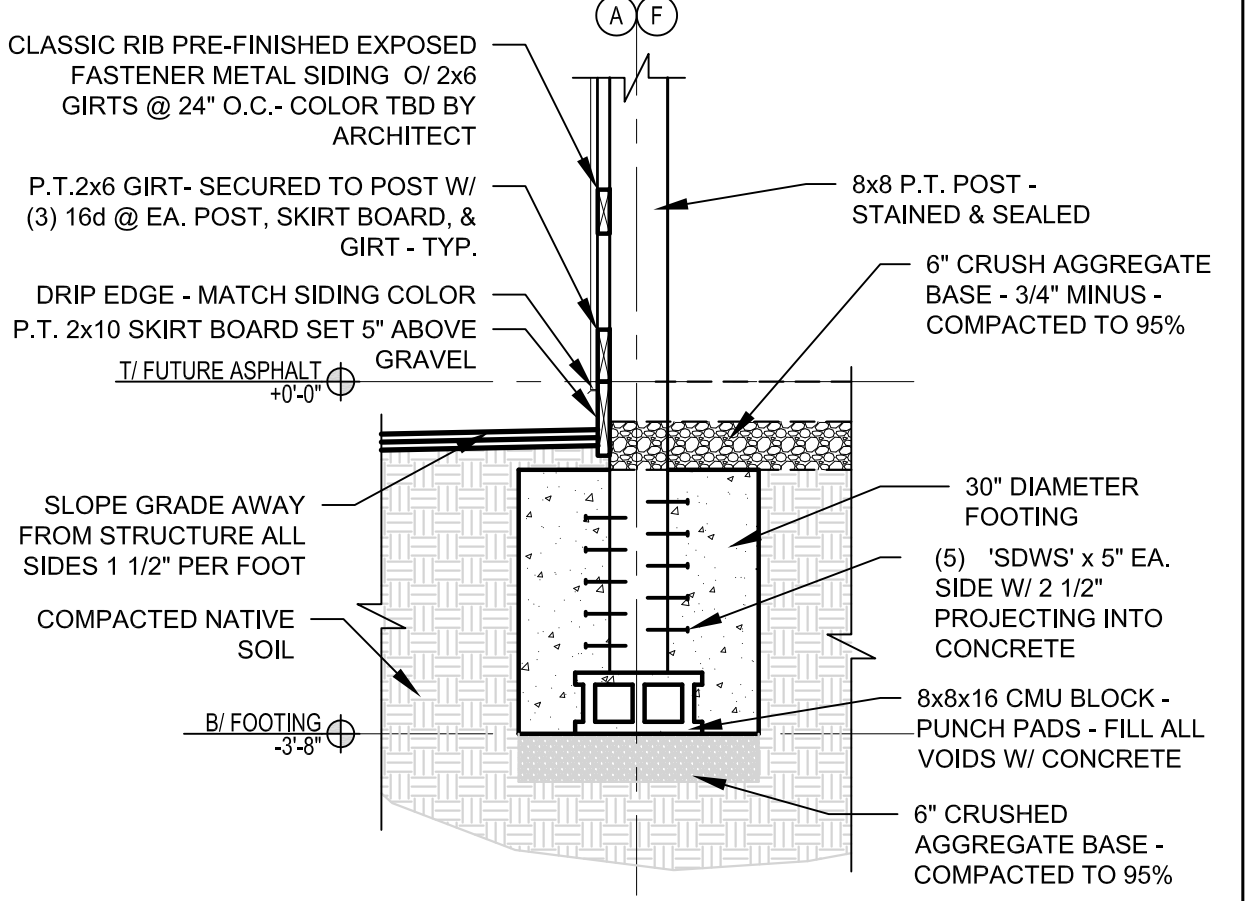
04 Ridge Vent Detail
SCALE: 1" = 1'-0"



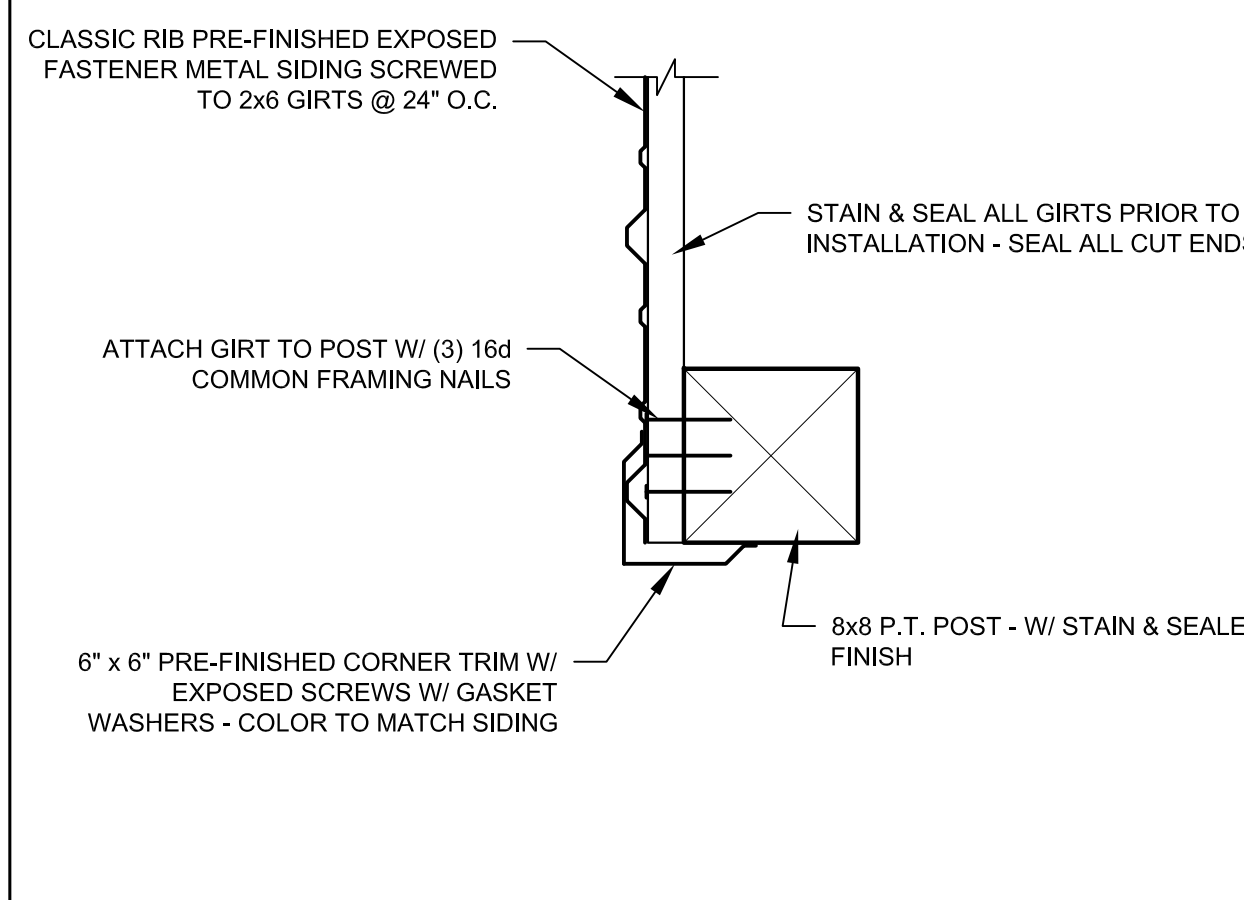
05 Post Ftg Dtl @ Grid 2
SCALE: 1/2" = 1'-0"



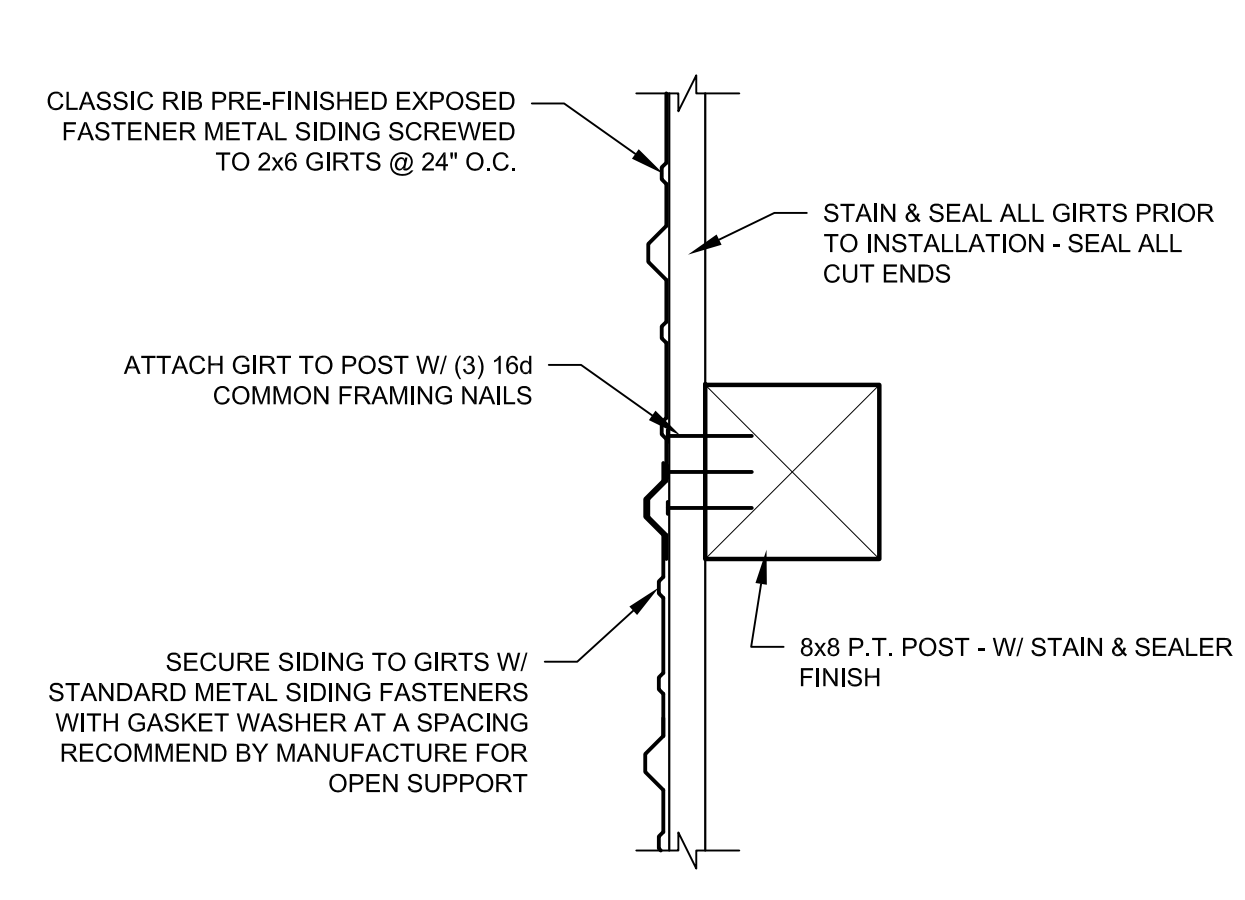
06 Post Ftg Dtl @ Grid 1
SCALE: 1/2" = 1'-0"



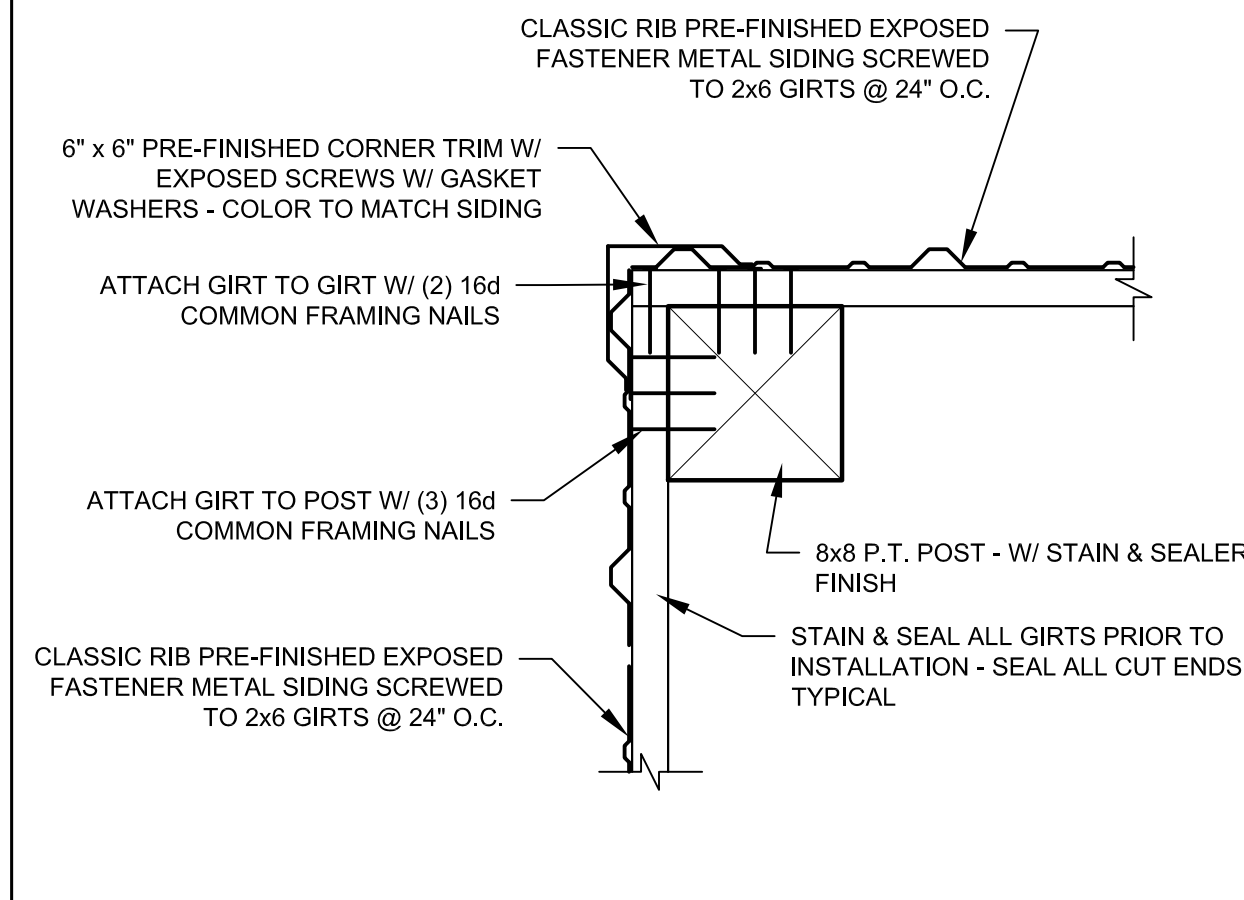
07 Post Ftg Dtl @ Grid A&F
SCALE: 1" = 1'-0"



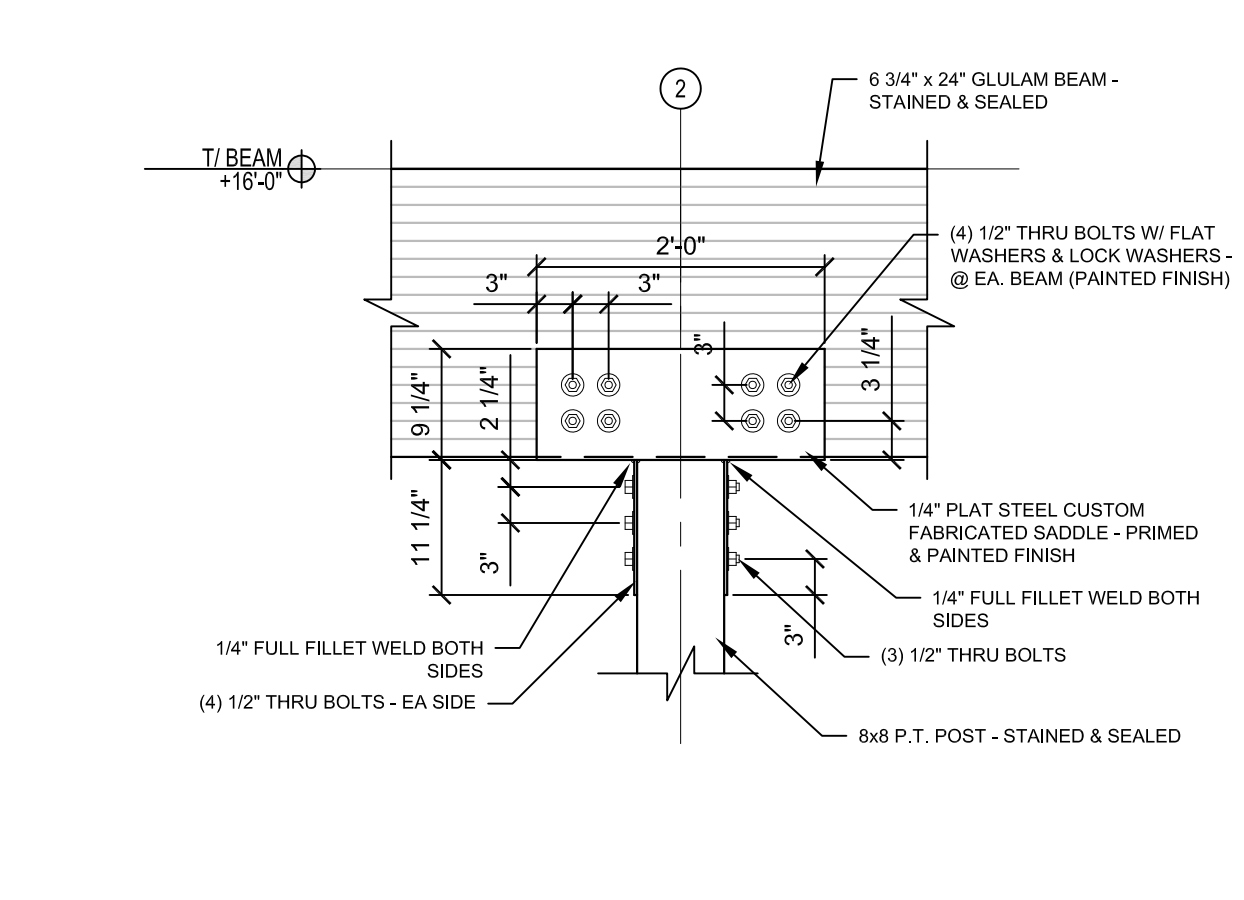
08 Girt to Post @ Opening
SCALE: 1 1/2" = 1'-0"



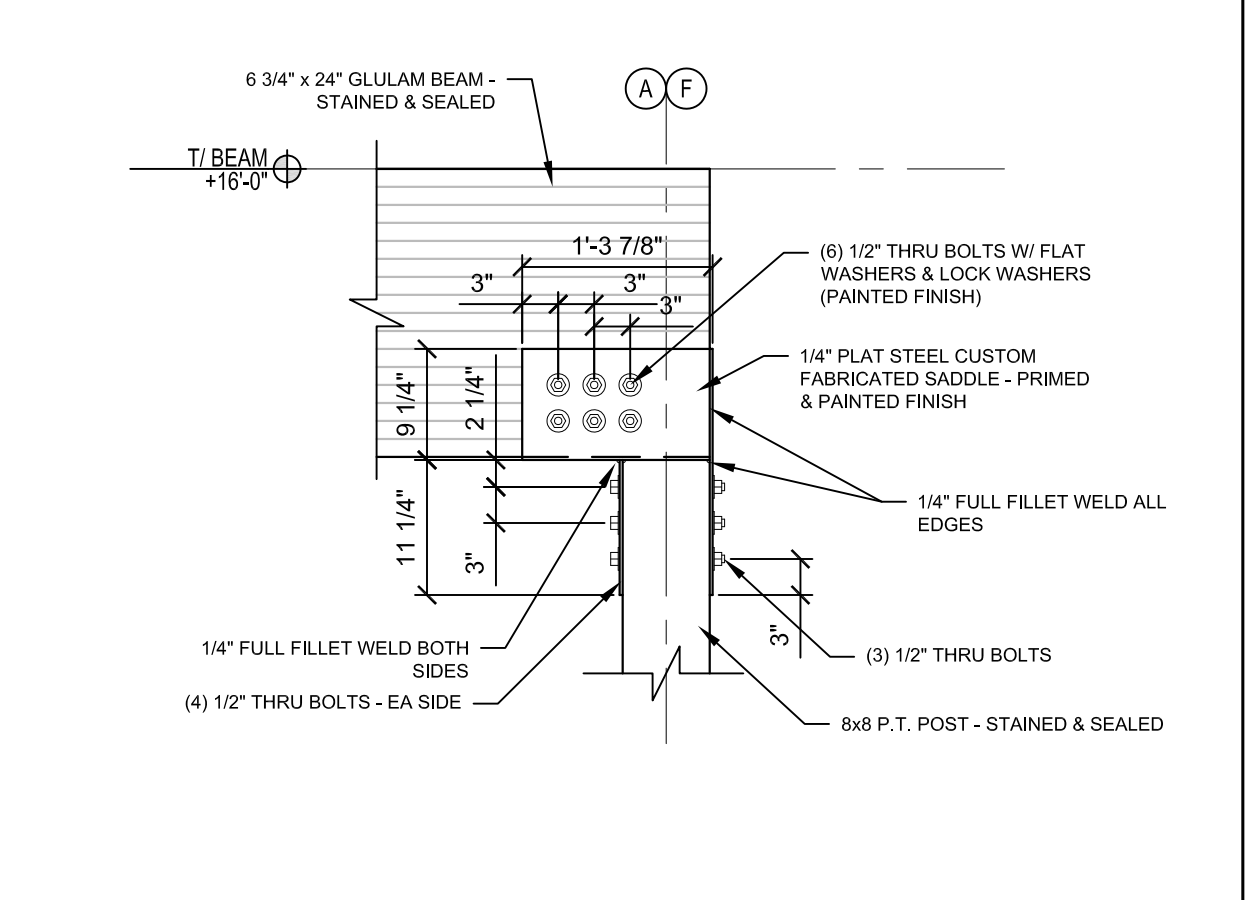
09 Girt to Post @ Middle
SCALE: 1 1/2" = 1'-0"



10 Girt to Post @ Corner
SCALE: 1 1/2" = 1'-0"



11 Column to Post Saddle
SCALE: 3/4" = 1'-0"



12 Column to Post Saddle
SCALE: 3/4" = 1'-0"

5/3/2023 8:14:57 AM

s:\bid cedars cold storage\cds\sheet\A5.0 building sections.dwg