

Crashes and Injuries by Month

Table 8 shows the number of crashes and injuries by severity for each month.

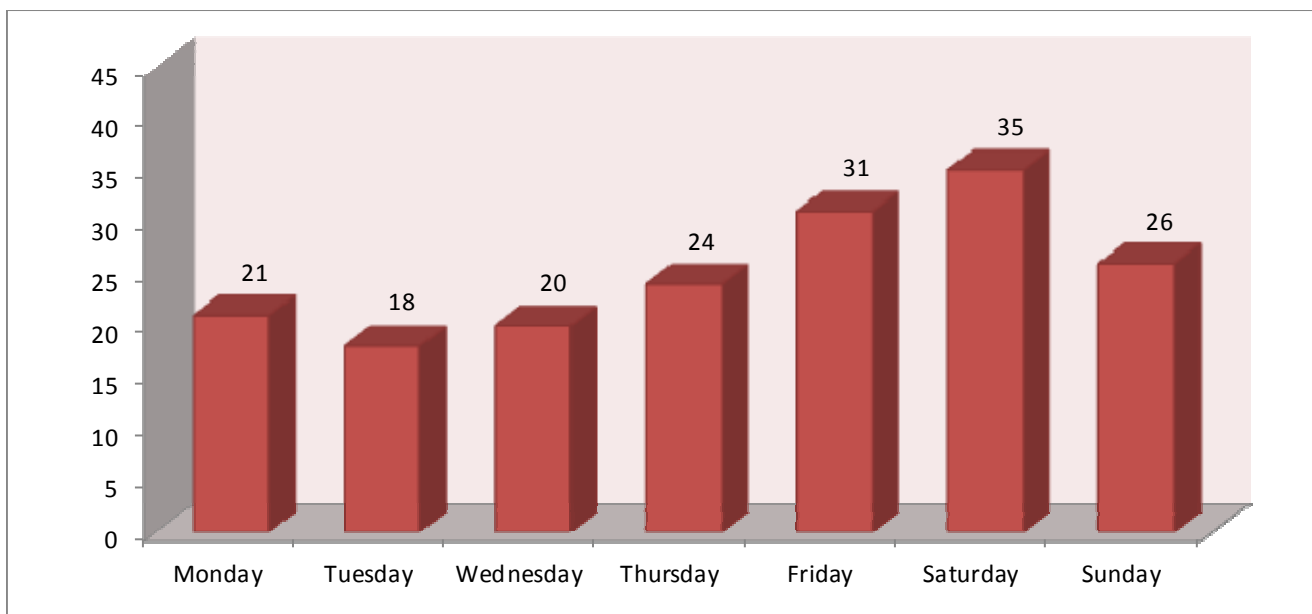
| | Fatal Crashes | Injury Crashes | Total Crashes | Fatal Injuries | Serious Injuries | Visible Injuries | Possible Injuries |
|---------------|--------------------------|---------------------------|--------------------------|---------------------------|-----------------------------|-----------------------------|------------------------------|
| January | 6 | 632 | 1,892 | 7 | 81 | 275 | 529 |
| February | 6 | 548 | 1,680 | 6 | 61 | 219 | 473 |
| March | 14 | 571 | 1,550 | 14 | 86 | 229 | 510 |
| April | 13 | 607 | 1,494 | 13 | 100 | 256 | 530 |
| May | 18 | 670 | 1,701 | 18 | 113 | 317 | 520 |
| June | 20 | 647 | 1,630 | 22 | 114 | 326 | 515 |
| July | 25 | 757 | 1,795 | 27 | 113 | 369 | 621 |
| August | 25 | 765 | 1,825 | 26 | 153 | 376 | 583 |
| September | 18 | 733 | 1,895 | 19 | 131 | 341 | 576 |
| October | 8 | 754 | 1,905 | 9 | 127 | 328 | 604 |
| November | 8 | 790 | 2,495 | 9 | 103 | 347 | 683 |
| December | 14 | 743 | 2,272 | 16 | 91 | 306 | 662 |
| Totals | 175 | 8,217 | 22,134 | 186 | 1,273 | 3,689 | 6,806 |

In 2014, July and August had the highest number of fatal crashes. November and December had the highest number of total crashes. Crashes occurring in the winter months are more likely to be attributed to severe weather such as ice and snow; however, these crashes tend to be less severe as people generally slow down and are more cautious when driving in adverse weather conditions.

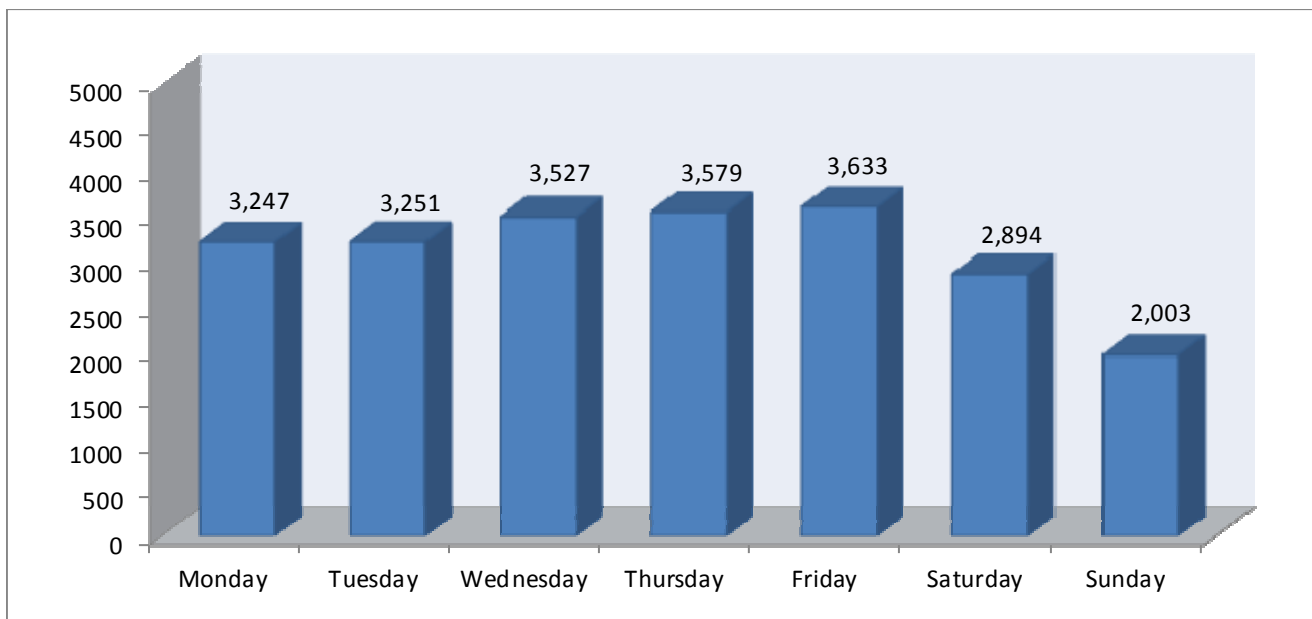
Crashes by Day of the Week

Figures 5 and 6 show the number of fatal and total crashes by day of the week.

**Figure 5
Fatal Crashes by Day of the Week: 2014**



**Figure 6
Total Crashes by Day of the Week: 2014**



Crashes by Time of Day

Figures 7 and 8 show the number of fatal and total crashes by the time of day.

Figure 7
Fatal Crashes by Time of Day: 2014

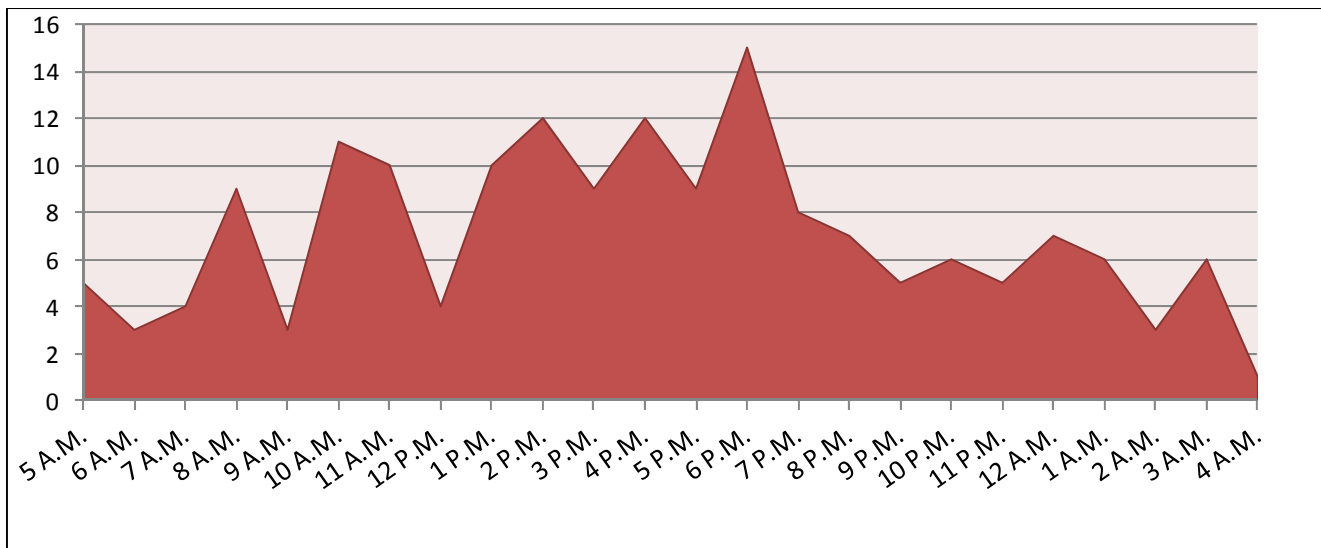


Figure 8
Total Crashes by Time of Day: 2014

