

## Crashes and Injuries by Month

Table 8 shows the number of crashes and injuries by severity for each month.

	<b>Fatal Crashes</b>	<b>Injury Crashes</b>	<b>Total Crashes</b>	<b>Fatal Injuries</b>	<b>Serious Injuries</b>	<b>Visible Injuries</b>	<b>Possible Injuries</b>
January	8	669	2,695	8	68	253	622
February	8	593	1,963	9	56	265	511
March	10	567	1,655	13	71	233	529
April	18	628	1,695	18	93	263	579
May	26	800	2,018	29	137	363	647
June	29	807	2,062	33	125	424	689
July	25	769	2,109	26	145	379	672
August	20	844	2,172	21	140	383	741
September	19	814	2,210	20	124	322	723
October	22	789	2,383	24	99	355	696
November	16	767	2,223	20	86	314	729
December	23	771	2,666	24	102	307	724
<b>Totals</b>	<b>224</b>	<b>8,818</b>	<b>25,851</b>	<b>245</b>	<b>1,246</b>	<b>3,861</b>	<b>7,862</b>

In 2017, June had the highest number of fatal crashes. May, July, December were the next highest number of fatal crashes. December and January had the highest number of total crashes. Crashes occurring in the winter months are more likely to be attributed to severe weather such as ice and snow; however, these crashes usually tend to be less severe as people generally slow down and are more cautious when driving in adverse weather conditions.

## Crashes by Day of the Week

Figures 5 and 6 show the number of fatal and total crashes by day of the week.

Figure 5  
Fatal Crashes by Day of the Week: 2017

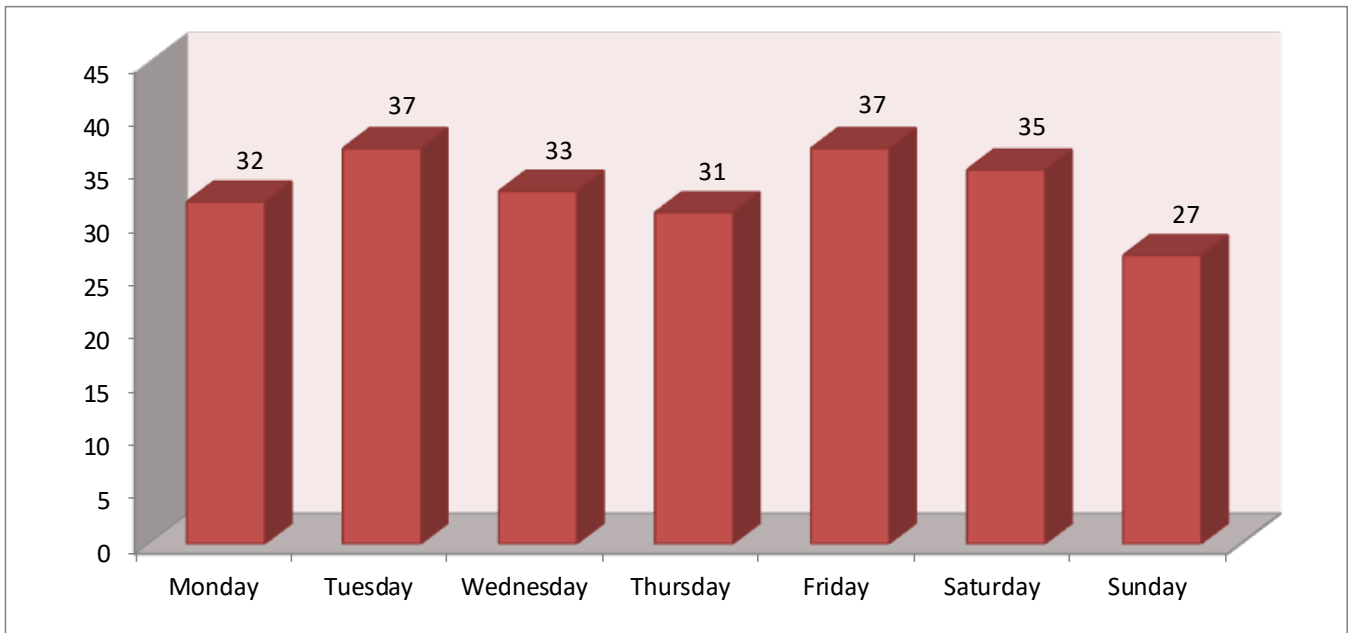
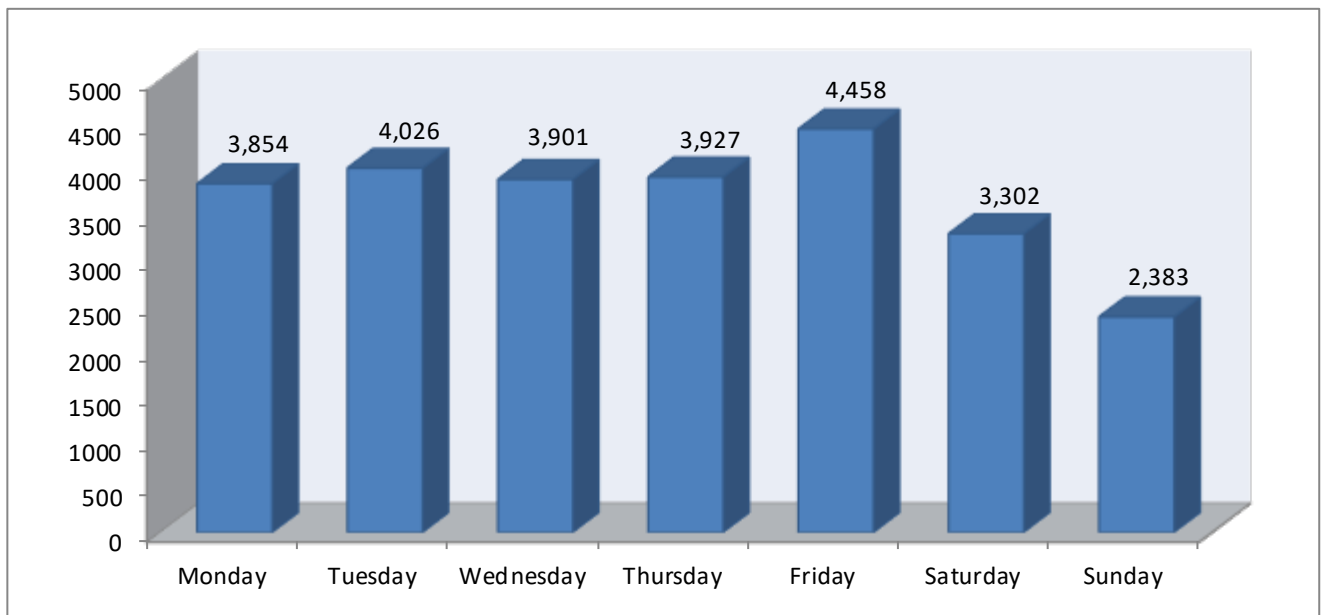


Figure 6  
Total Crashes by Day of the Week: 2017



## Crashes by Time of Day

Figures 7 and 8 show the number of fatal and total crashes by the time of day.

Figure 7  
Fatal Crashes by Time of Day: 2017

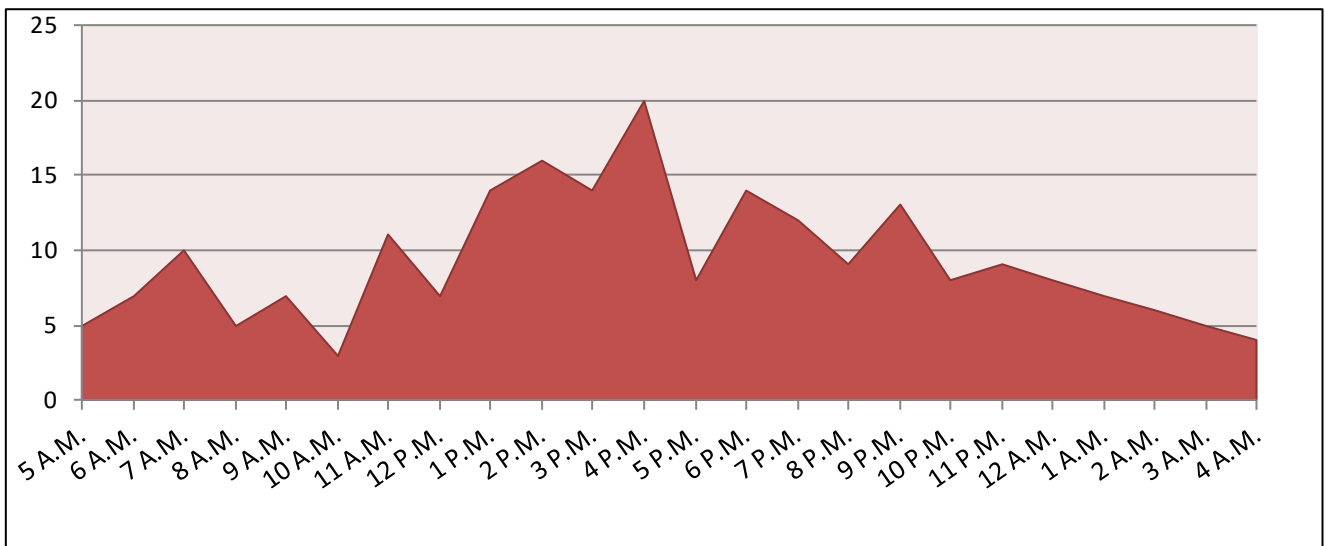


Figure 8  
Total Crashes by Time of Day: 2017

