

Crashes and Injuries by Month

Table 8 shows the number of crashes and injuries by severity for each month.

	Fatal Crashes	Injury Crashes	Total Crashes	Fatal Injuries	Suspected Serious Injuries	Suspected Minor Injuries	Possible Injuries
January	10	613	1,919	10	77	268	555
February	11	623	1,990	11	78	241	586
March	9	637	1,857	9	89	269	562
April	16	704	1,819	17	104	306	645
May	18	790	2,174	22	96	340	741
June	28	793	2,088	32	134	389	684
July	28	822	2,206	30	130	380	693
August	27	911	2,354	28	126	413	753
September	24	886	2,320	28	131	402	784
October	21	805	2,128	22	102	348	724
November	9	712	1,495	10	73	317	595
December	14	787	1,681	15	110	311	745
Totals	215	9,083	24,031	234	1,250	3,984	8,067

In 2018, June, July and August had the highest number of fatal crashes. August and September had the highest number of total crashes. Usually the winter months have the highest number of total crashes. Crashes occurring in the winter months are more likely to be attributed to severe weather such as ice and snow; however, these crashes usually tend to be less severe as people generally slow down and are more cautious when driving in adverse weather conditions.

Crashes by Day of the Week

Figures 5 and 6 show the number of fatal and total crashes by day of the week.

Figure 5
Fatal Crashes by Day of the Week: 2018

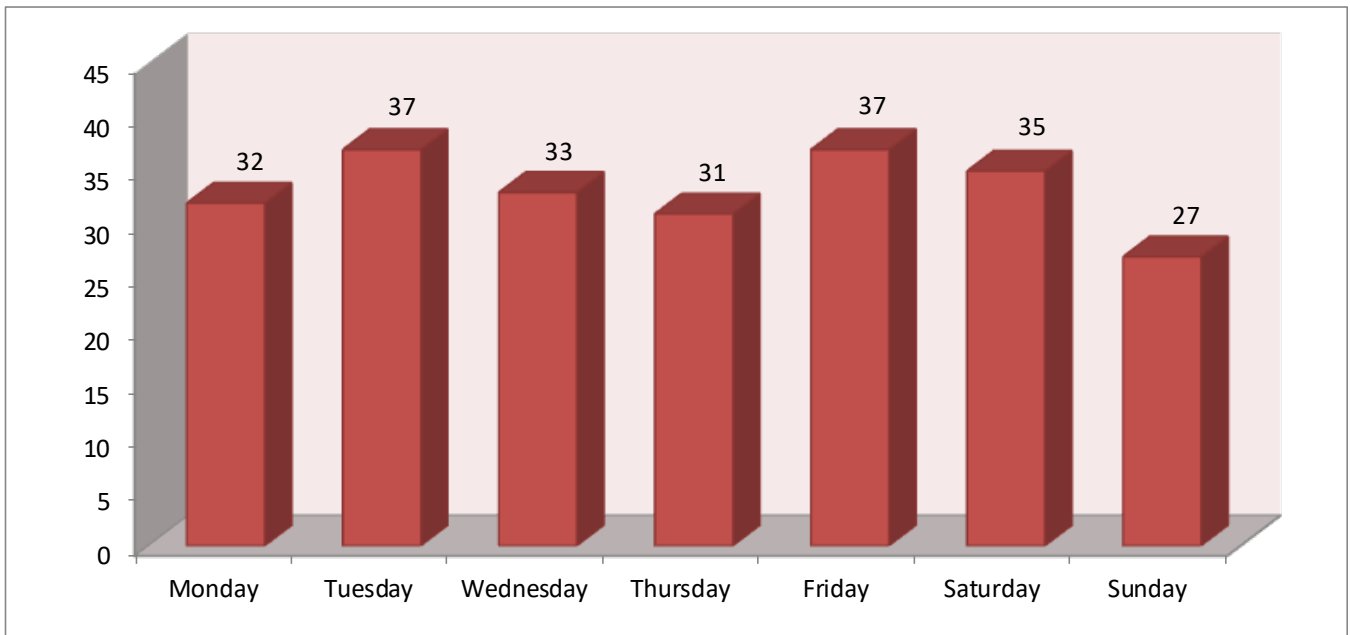
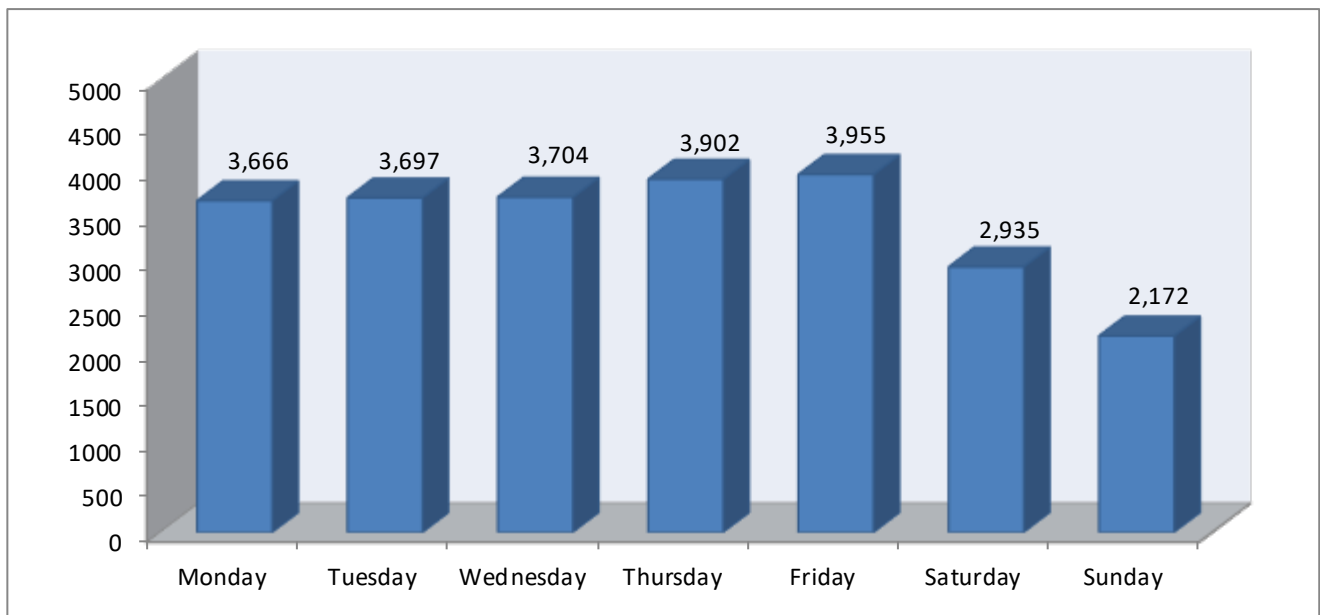


Figure 6
Total Crashes by Day of the Week: 2018



Crashes by Time of Day

Figures 7 and 8 show the number of fatal and total crashes by the time of day.

Figure 7
Fatal Crashes by Time of Day: 2018

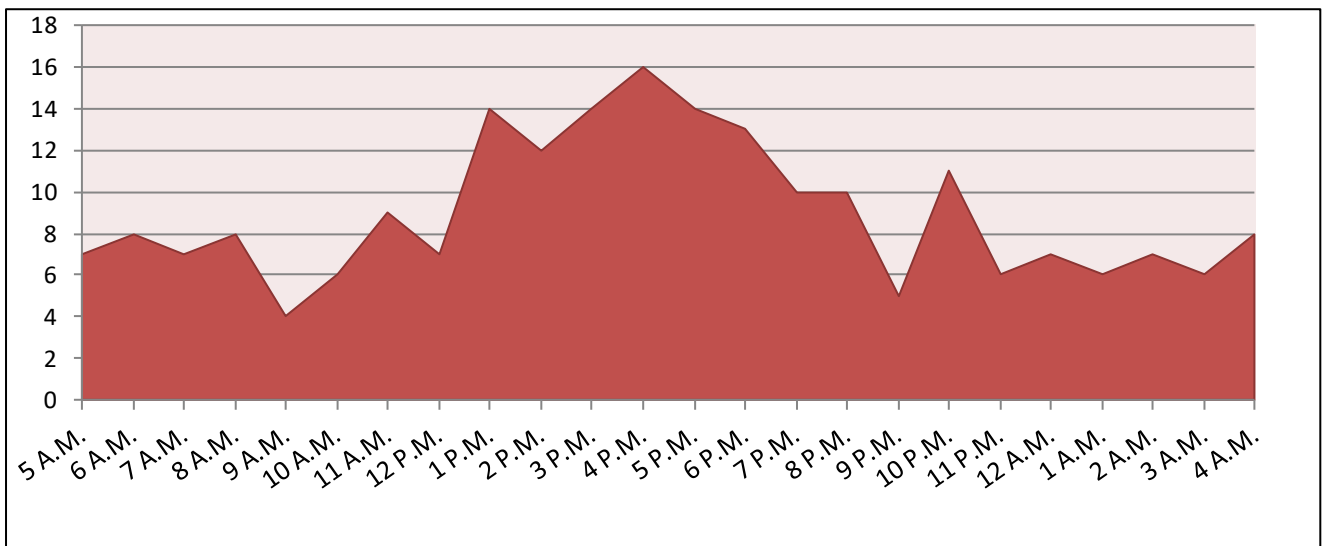


Figure 8
Total Crashes by Time of Day: 2018

