

Crashes and Injuries by Month

Table 8 shows the number of crashes and injuries by severity for each month.

	Fatal Crashes	Injury Crashes	Total Crashes	Fatal Injuries	Suspected Serious Injuries	Suspected Minor Injuries	Possible Injuries
January	8	659	2,200	8	80	223	616
February	17	677	2,445	22	63	265	624
March	11	612	1,860	11	71	295	541
April	13	707	1,916	14	74	307	649
May	17	757	2,170	20	107	323	707
June	18	781	2,094	19	120	378	681
July	30	813	2,198	33	128	381	720
August	25	884	2,414	31	147	401	753
September	16	851	2,315	17	104	353	749
October	18	813	2,487	19	88	322	769
November	13	815	2,411	14	87	310	757
December	15	784	2,505	16	85	331	722
Totals	201	9,153	27,015	224	1,154	3,889	8,288

In 2019, July and August had the highest number of fatal crashes. December and October had the highest number of total crashes. Usually the winter months have the highest number of total crashes. Crashes occurring in the winter months are more likely to be attributed to severe weather such as ice and snow; however, these crashes usually tend to be less severe as people generally slow down and are more cautious when driving in adverse weather conditions.

Crashes by Day of the Week

Figures 5 and 6 show the number of fatal and total crashes by day of the week.

Figure 5
Fatal Crashes by Day of the Week: 2019

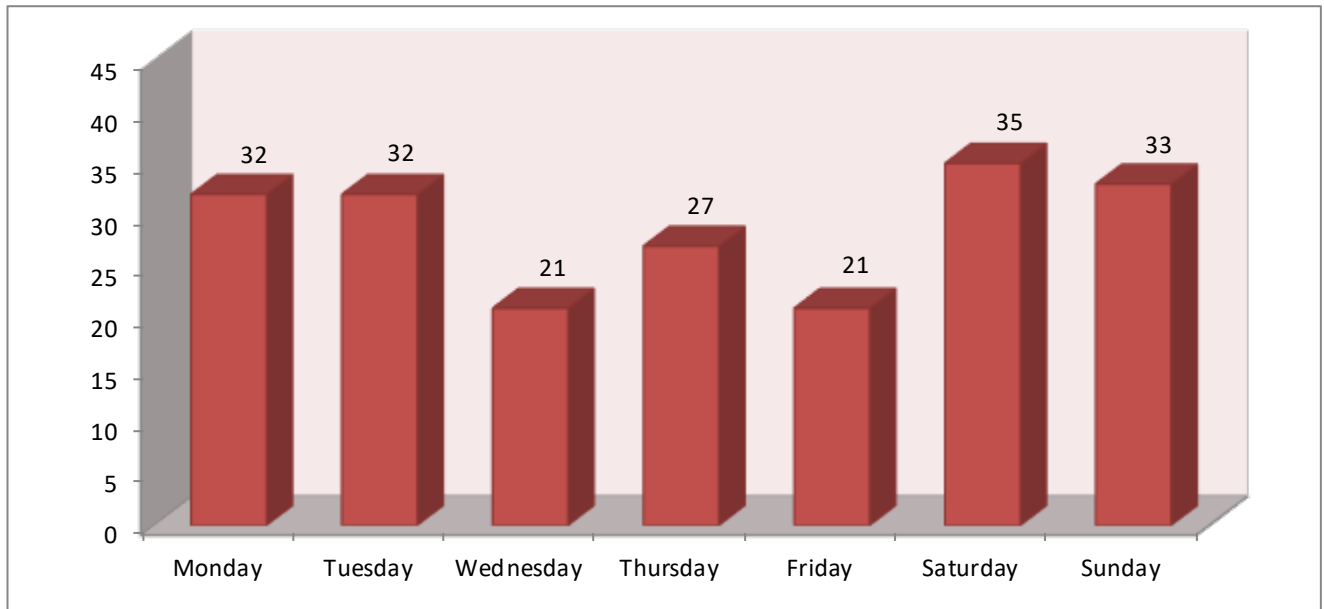
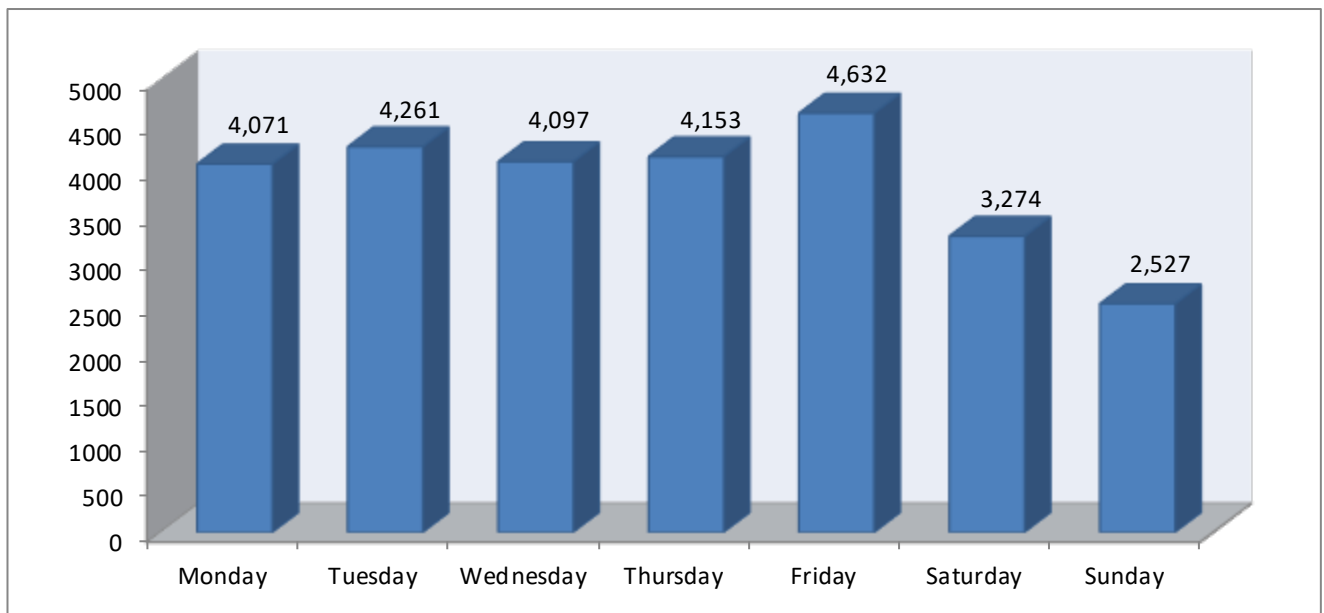


Figure 6
Total Crashes by Day of the Week: 2019



Crashes by Time of Day

Figures 7 and 8 show the number of fatal and total crashes by the time of day.

Figure 7
Fatal Crashes by Time of Day: 2019

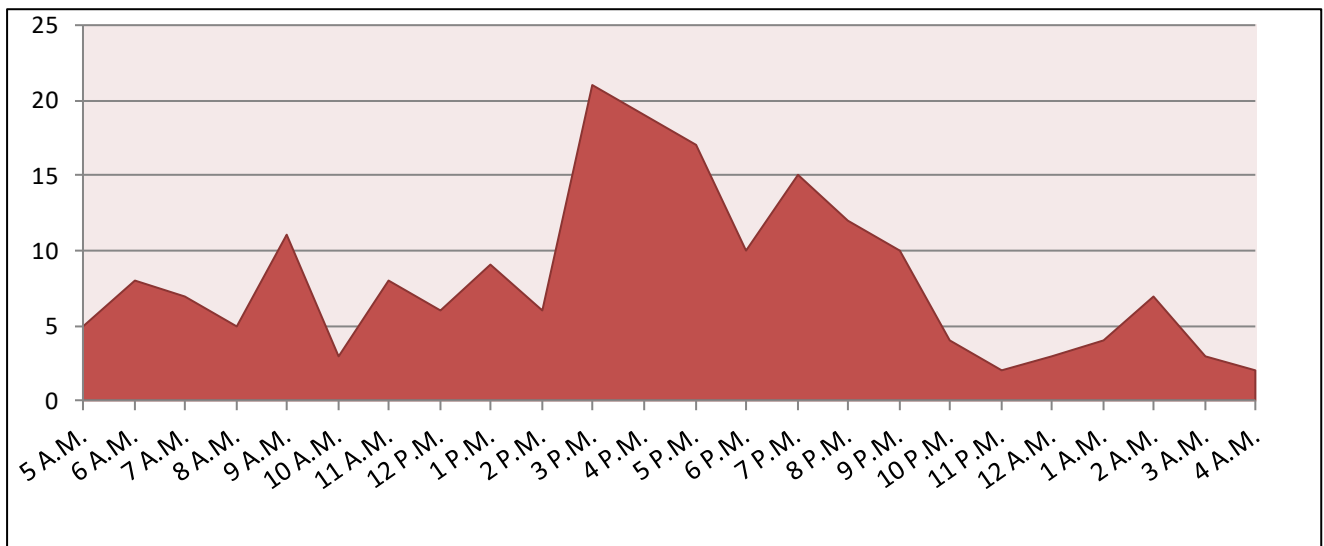


Figure 8
Total Crashes by Time of Day: 2019

