

Crashes and Injuries by Month

Table 8 shows the number of crashes and injuries by severity for each month.

	Fatal Crashes	Injury Crashes	Total Crashes	Fatal Injuries	Suspected Serious Injuries	Suspected Minor Injuries	Possible Injuries
January	6	690	1,658	6	70	261	651
February	15	657	1,466	15	68	264	627
March	8	489	1,159	8	63	185	449
April	9	404	1,129	9	53	199	321
May	18	623	1,710	21	110	291	488
June	19	705	1,928	22	93	341	586
July	24	751	2,067	26	138	395	637
August	25	785	2,178	29	133	396	623
September	16	754	2,221	18	129	352	613
October	15	769	2,343	19	86	361	665
November	12	630	2,250	14	84	283	503
December	21	665	2,419	27	75	309	553
Totals	188	7,922	22,528	214	1,102	3,637	6,716

In 2020, July and August had the highest number of fatal crashes. December and October had the highest number of total crashes. Usually the winter months have the highest number of total crashes. Crashes occurring in the winter months are more likely to be attributed to severe weather such as ice and snow; however, these crashes usually tend to be less severe as people generally slow down and are more cautious when driving in adverse weather conditions.

Crashes by Day of the Week

Figures 5 and 6 show the number of fatal and total crashes by day of the week.

Figure 5
Fatal Crashes by Day of the Week: 2020

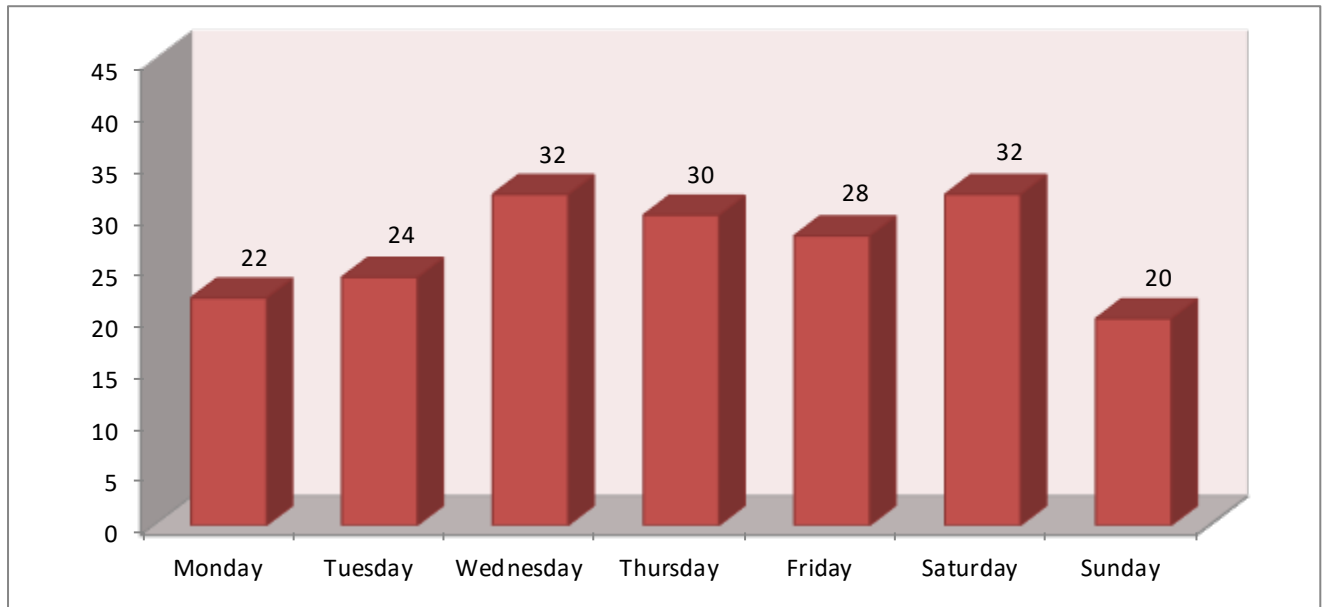
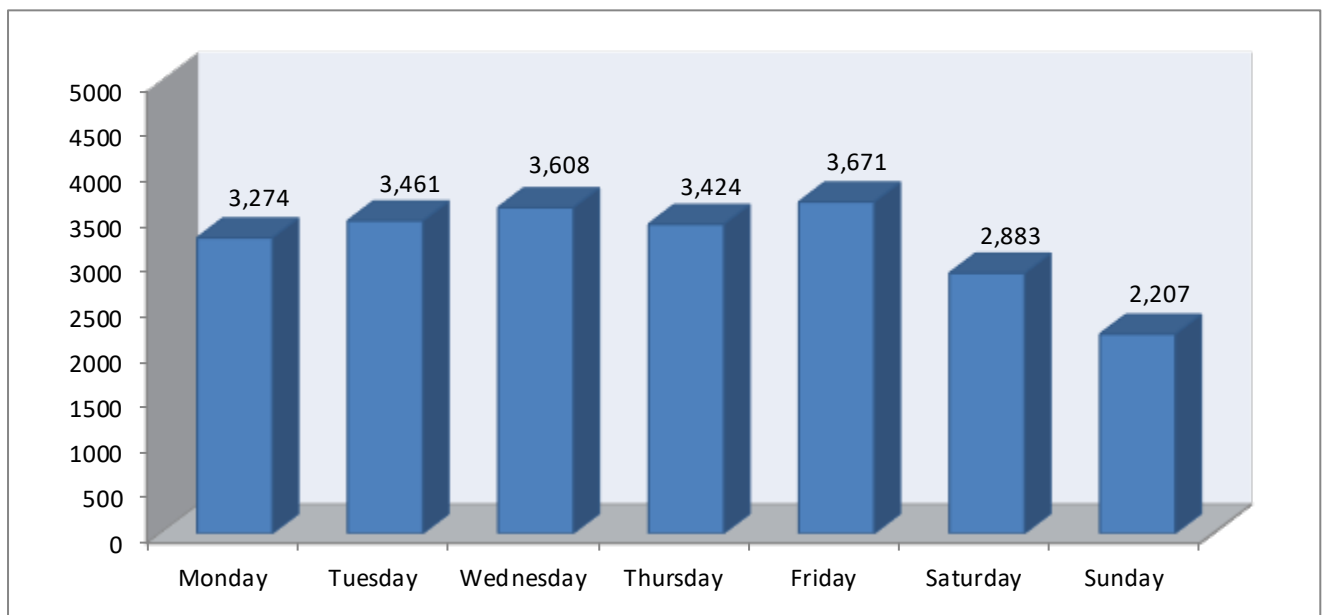


Figure 6
Total Crashes by Day of the Week: 2020



Crashes by Time of Day

Figures 7 and 8 show the number of fatal and total crashes by the time of day.

Figure 7
Fatal Crashes by Time of Day: 2020

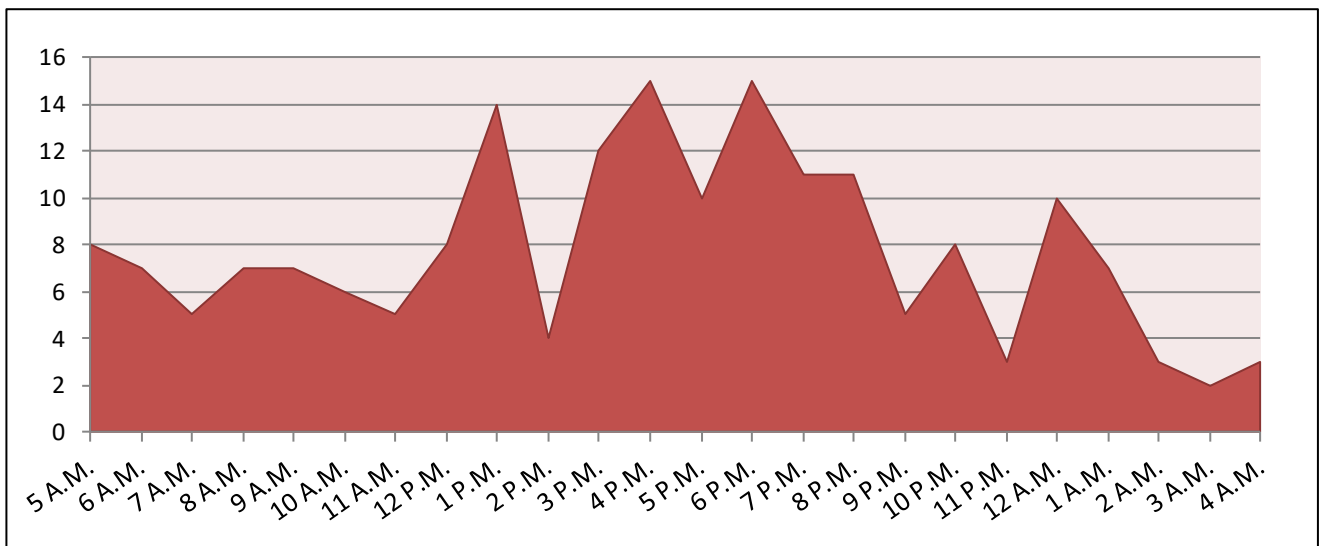


Figure 8
Total Crashes by Time of Day: 2020

