

Crashes and Injuries by Month

Table 8 shows the number of crashes and injuries by severity for each month.

Table 8							
Severity of Crashes and Type of Injury by Month: 2021							
	Fatal Crashes	Injury Crashes	Total Crashes	Fatal Injuries	Suspected Serious Injuries	Suspected Minor Injuries	Possible Injuries
January	17	576	2,060	17	83	261	462
February	9	577	2,109	9	79	255	494
March	15	651	1,838	15	87	295	564
April	12	654	2,016	14	94	338	518
May	34	726	2,176	42	132	372	578
June	25	793	2,164	28	166	435	539
July	18	818	2,346	19	177	429	616
August	24	761	2,275	26	124	421	595
September	24	793	2,471	26	125	447	577
October	27	776	2,556	30	104	413	608
November	24	708	2,365	30	99	352	610
December	15	832	3,171	15	97	375	695
Totals	244	8,665	27,547	271	1,367	4,393	6,856

In 2021, May and October had the highest number of fatal crashes. December and October had the highest number of total crashes. Usually the winter months have the highest number of total crashes. Crashes occurring in the winter months are more likely to be attributed to severe weather such as ice and snow; however, these crashes usually tend to be less severe as people generally slow down and are more cautious when driving in adverse weather conditions.

Crashes by Day of the Week

Figures 5 and 6 show the number of fatal and total crashes by day of the week.

Figure 5
Fatal Crashes by Day of the Week: 2021

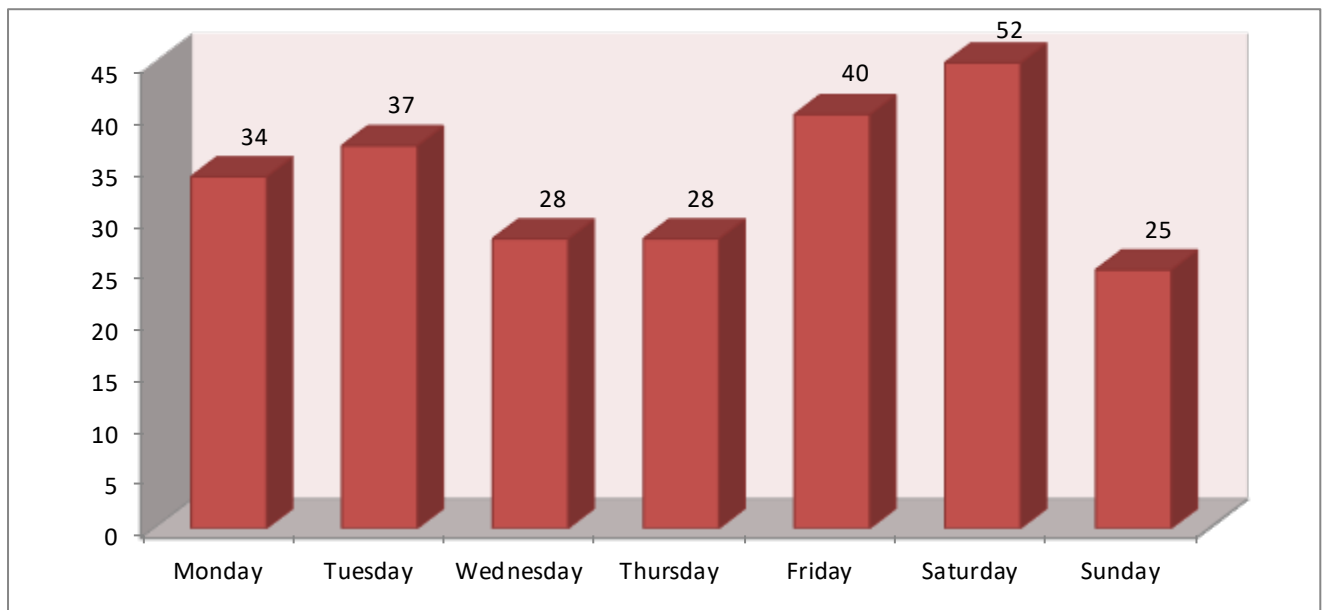
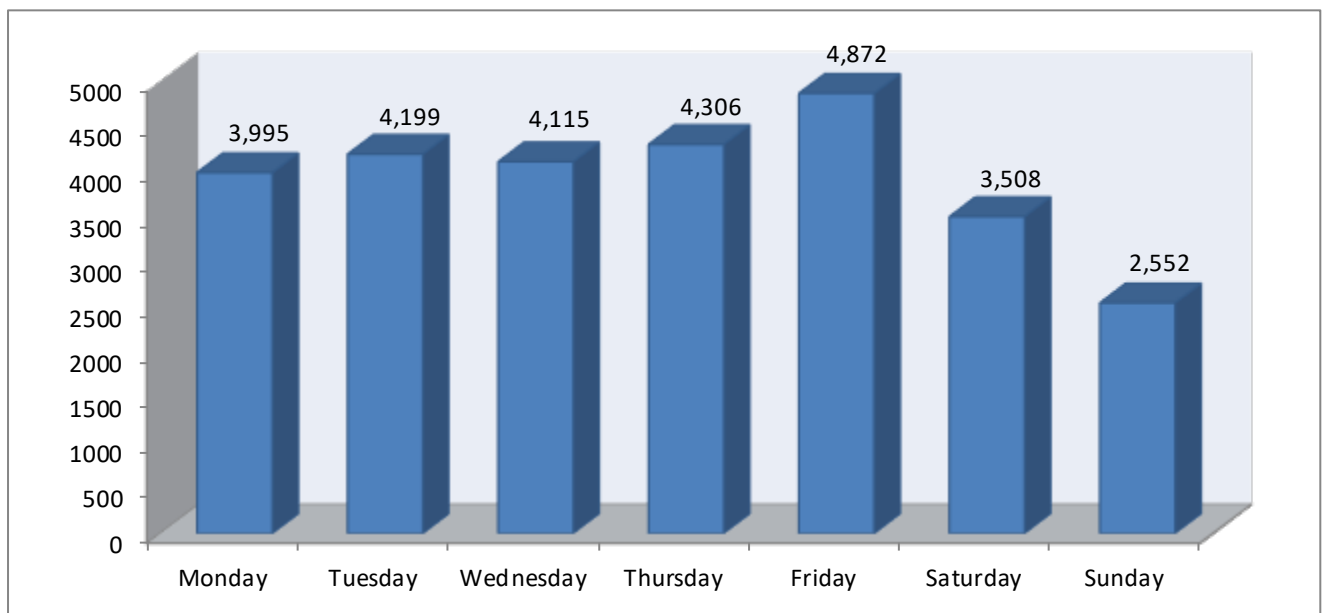


Figure 6
Total Crashes by Day of the Week: 2021



Crashes by Time of Day

Figures 7 and 8 show the number of fatal and total crashes by the time of day.

Figure 7
Fatal Crashes by Time of Day: 2021

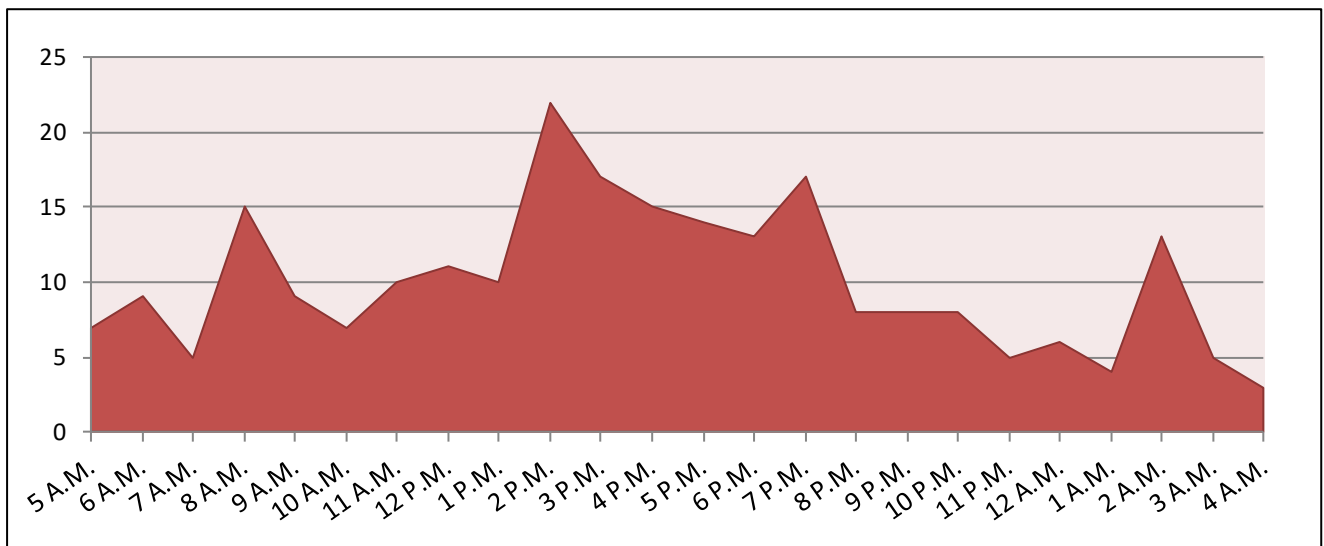


Figure 8
Total Crashes by Time of Day: 2021

