

Crashes and Injuries by Month

Table 8 shows the number of crashes and injuries by severity for each month.

	Fatal Crashes	Injury Crashes	Total Crashes	Fatal Injuries	Suspected Serious Injuries	Suspected Minor Injuries	Possible Injuries
January	9	553	2,233	9	60	277	426
February	10	542	1,934	10	79	257	395
March	13	564	1,882	13	100	279	429
April	15	673	2,053	17	102	365	517
May	8	661	2,043	8	113	349	519
June	17	762	2,251	22	116	428	548
July	32	794	2,308	35	160	490	562
August	21	818	2,265	21	146	461	552
September	22	735	2,368	26	104	470	464
October	20	850	2,548	23	138	472	640
November	18	743	2,802	22	117	395	566
December	9	748	2,974	9	101	361	597
Totals	194	8,443	27,661	215	1,336	4,604	6,215

In 2022, July had the highest number of fatal crashes, followed by August, September, and October. November and December had the highest number of total crashes. Usually the winter months have the highest number of total crashes. Crashes occurring in the winter months are more likely to be attributed to severe weather such as ice and snow; however, these crashes usually tend to be less severe as people generally slow down and are more cautious when driving in adverse weather conditions.

Crashes by Day of the Week

Figures 5 and 6 show the number of fatal and total crashes by day of the week.

Figure 5
Fatal Crashes by Day of the Week: 2022

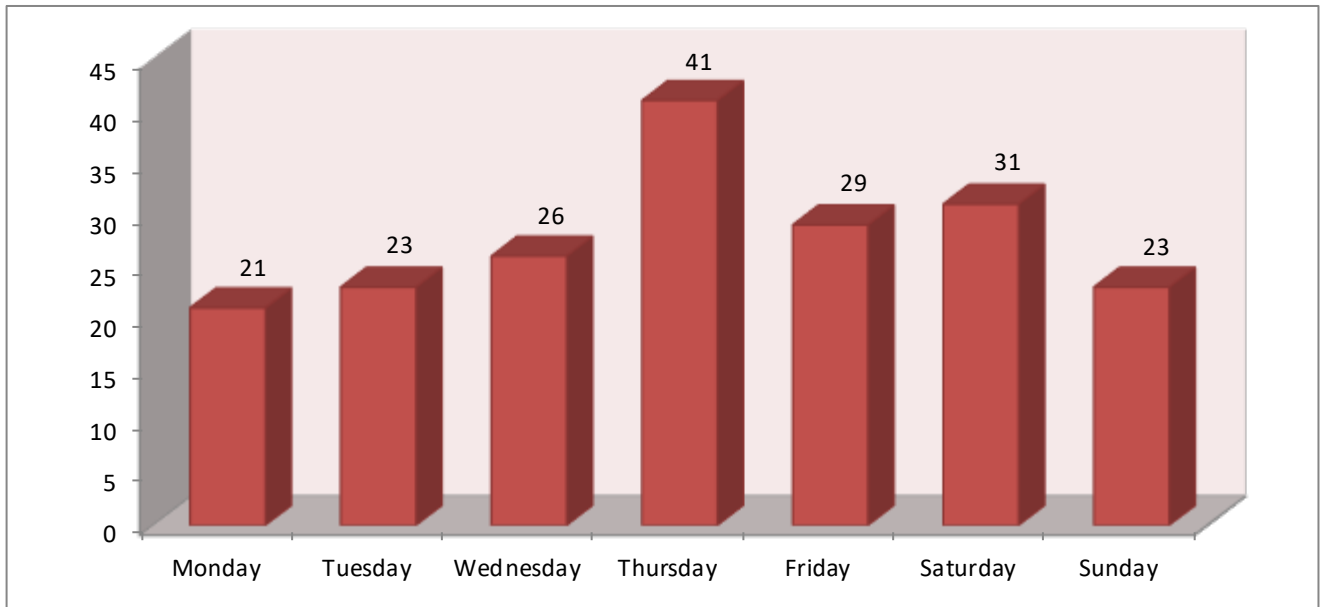
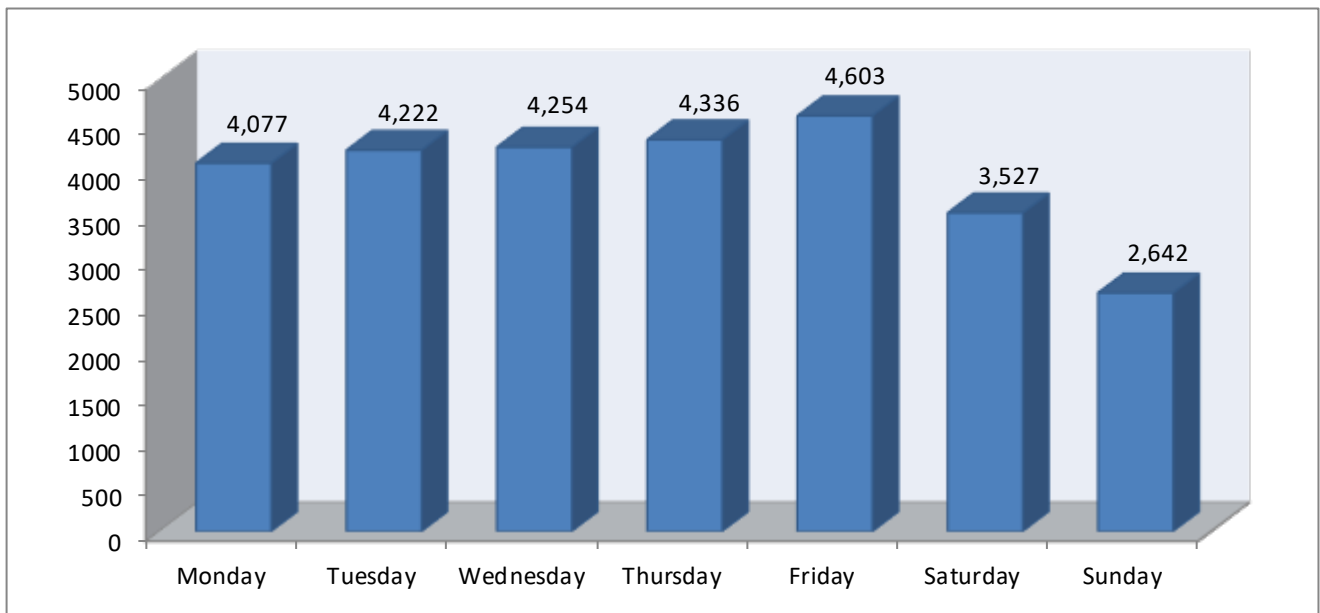


Figure 6
Total Crashes by Day of the Week: 2022



Crashes by Time of Day

Figures 7 and 8 show the number of fatal and total crashes by the time of day.

Figure 7
Fatal Crashes by Time of Day: 2022

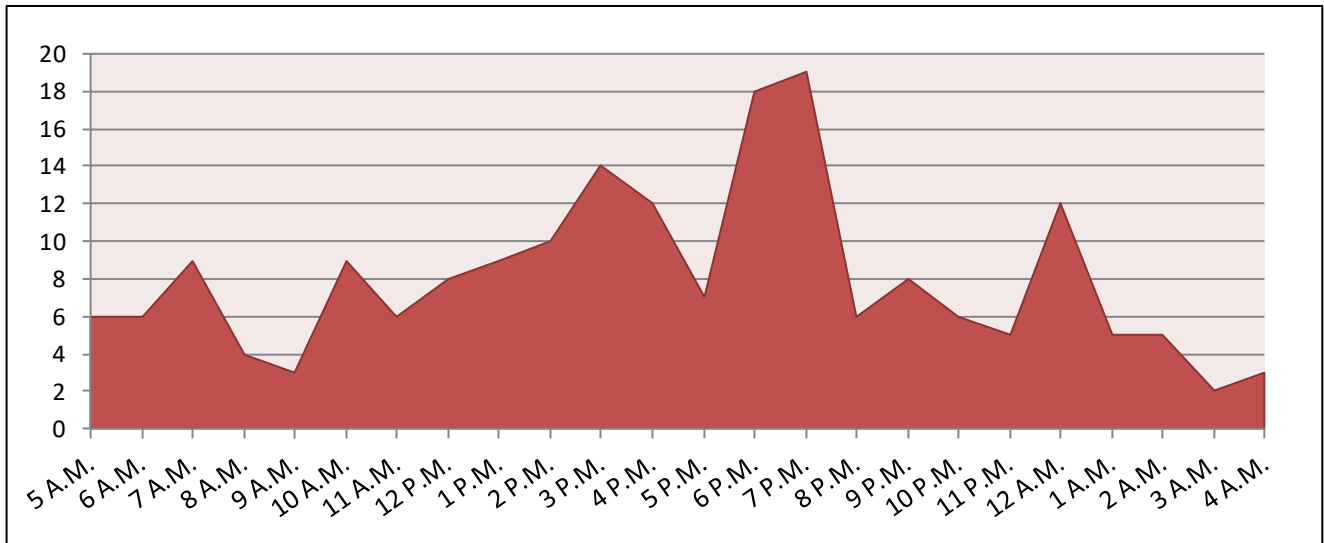


Figure 8
Total Crashes by Time of Day: 2022

