

Crashes and Injuries by Month

Table 8 shows the number of crashes and injuries by severity for each month.

Table 8							
Severity of Crashes and Type of Injury by Month: 2023							
	Fatal Crashes	Injury Crashes	Total Crashes	Fatal Injuries	Suspected Serious Injuries	Suspected Minor Injuries	Possible Injuries
January	10	626	2,394	10	73	321	464
February	11	559	2,129	12	65	311	391
March	17	599	2,191	19	84	348	454
April	15	598	1,866	15	89	314	449
May	15	679	2,159	19	85	384	479
June	15	706	2,147	19	120	421	480
July	34	814	2,324	37	140	486	575
August	27	752	2,362	29	151	447	496
September	25	773	2,343	31	121	441	515
October	31	733	2,557	37	115	417	525
November	19	694	2,406	21	94	370	567
December	23	728	2,801	26	91	351	625
Totals	242	8,261	27,679	275	1,228	4,611	6,020

In 2023, July had the highest number of fatal crashes, followed by October, August, and September. October and December had the highest number of total crashes. Usually the winter months have the highest number of total crashes. Crashes occurring in the winter months are more likely to be attributed to severe weather such as ice and snow; however, these crashes usually tend to be less severe as people generally slow down and are more cautious when driving in adverse weather conditions.

Crashes by Day of the Week

Figures 5 and 6 show the number of fatal and total crashes by day of the week.

Figure 5
Fatal Crashes by Day of the Week: 2023

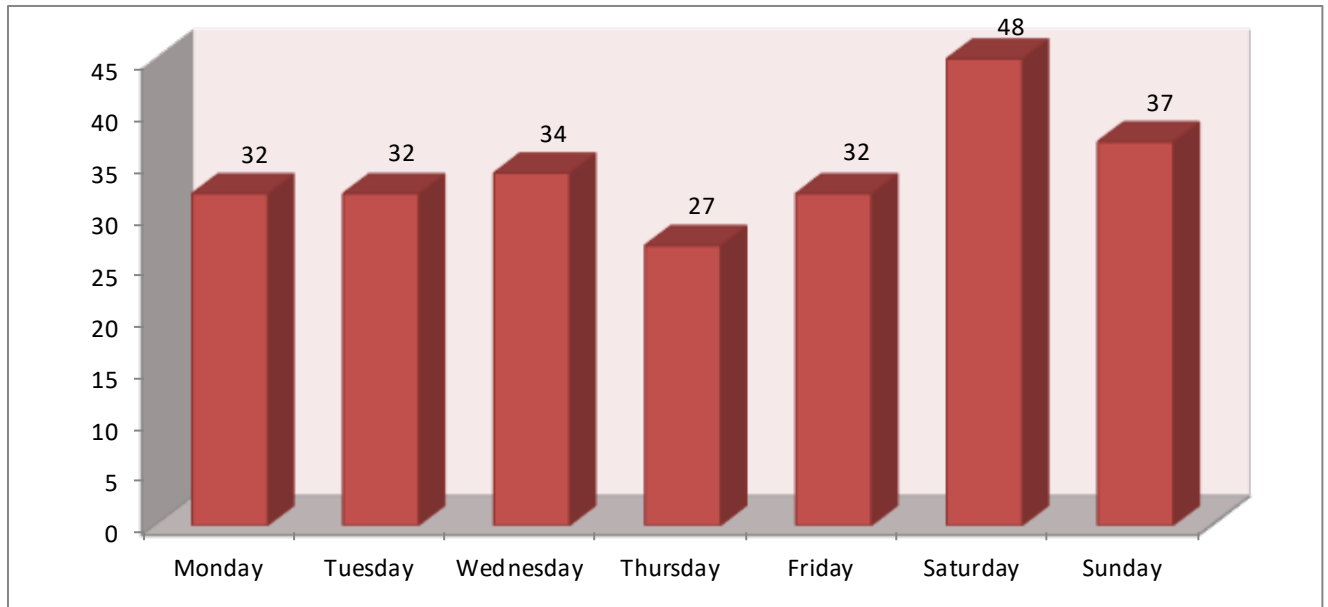
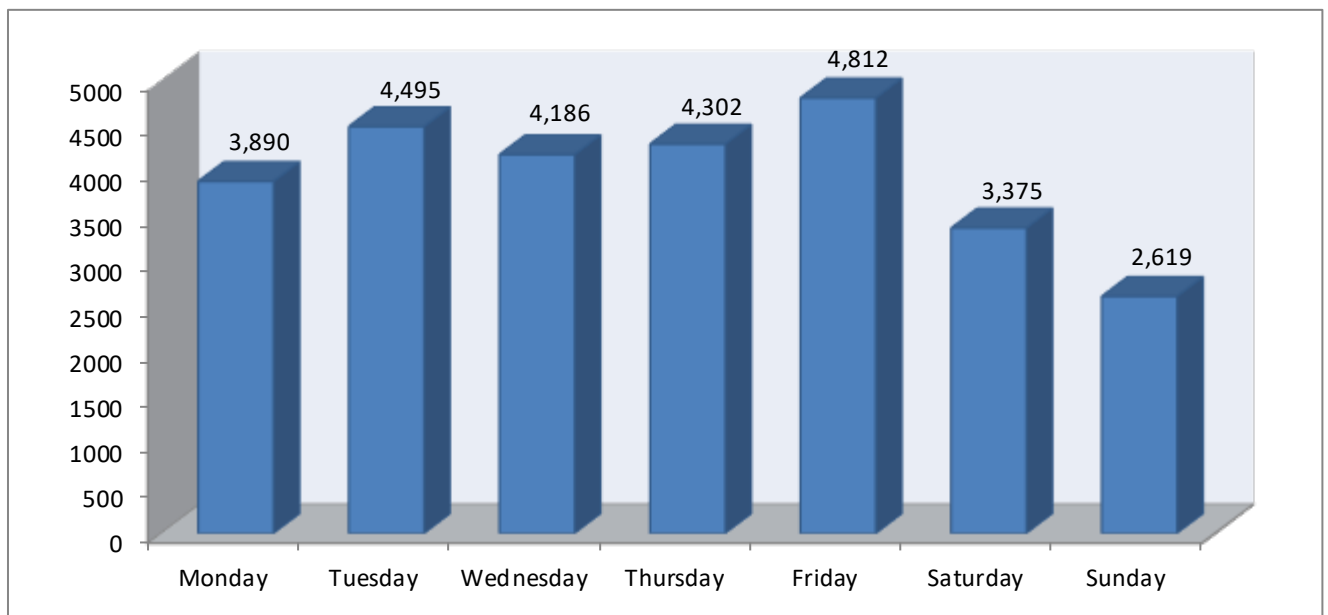


Figure 6
Total Crashes by Day of the Week: 2023



Crashes by Time of Day

Figures 7 and 8 show the number of fatal and total crashes by the time of day.

Figure 7
Fatal Crashes by Time of Day: 2023

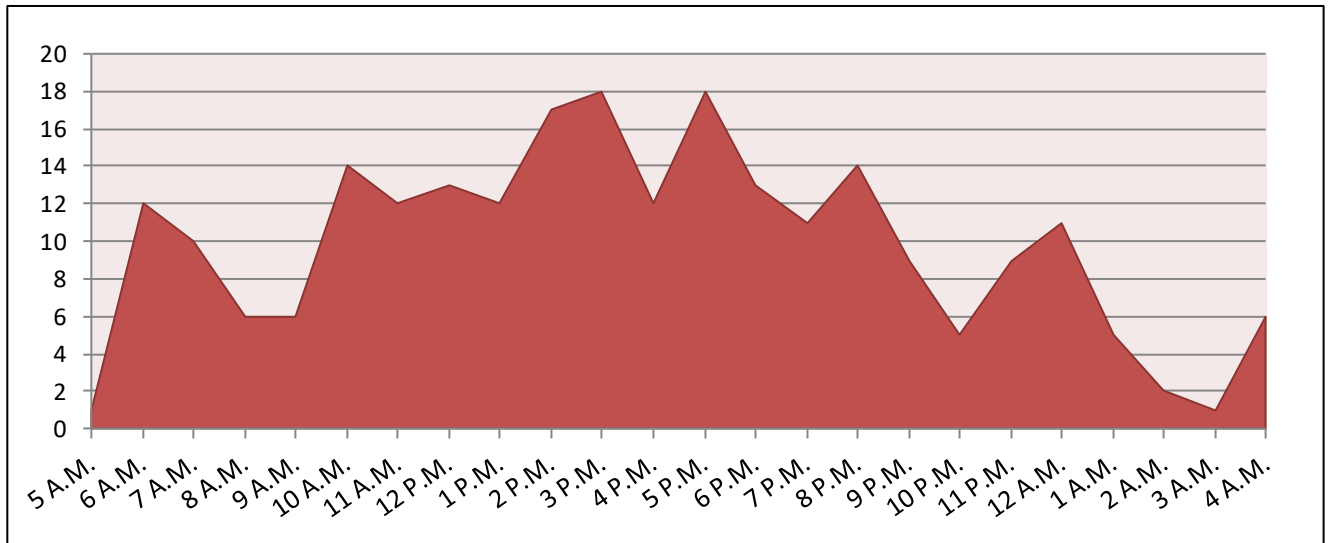


Figure 8
Total Crashes by Time of Day: 2023

