

# 2012 - 2016 Aggressive Crash Summary



## Summary

At the Idaho Transportation Department (ITD) our Strategic Plan is “Your Safety, Your Mobility, Your Economic Opportunity.” ITD is committed to providing the safest transportation system possible. Each year progress is made to eliminate death and serious injuries (SI) on Idaho’s highways. Traffic safety professionals have addressed behaviors, infrastructure improvements and enforcement countermeasures to reduce crashes. The goal, “Toward Zero Deaths”, is the foundation upon which we work.

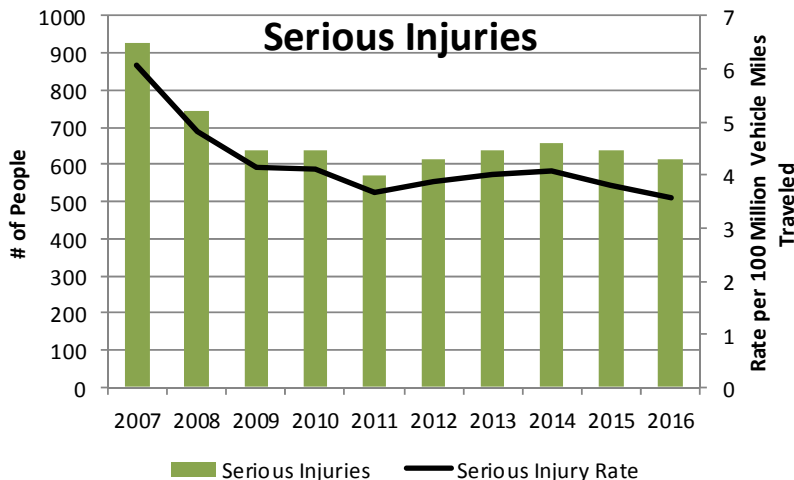
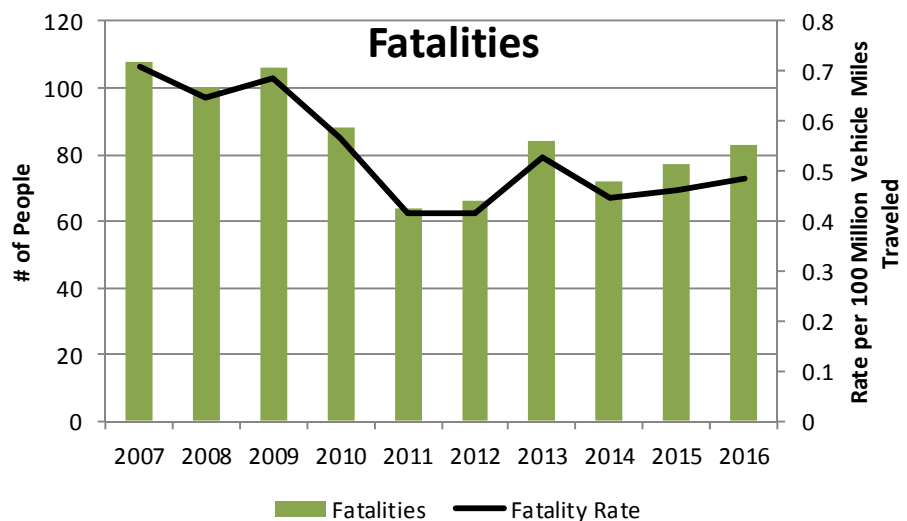
All data and tables are 5 years of data, (2012-2016) except for the Fatalities and Serious Injuries graphs which are 10 years of annual data (2007-2016). The source of the crash information is the ITD statewide crash database which consists of crash reports completed by all law enforcement agencies in Idaho.

An aggressive driving crash is determined by contributing circumstances when one or more of the following is selected: following too closely, failure to obey stop sign, failure to obey signal, failure to yield, exceeded posted speed limit, speeds too fast for conditions.

### Special points of interest:

#### Fatalities (2012-2016)

- 36% of all fatal crashes
- 36% of all fatalities
- 349 fatal crashes
- 381 people killed
- 54% killed were unbelted (passenger vehicles only ages 7 and older)
- 74% crashes on rural roads
- 13% crashes on interstates (rural and urban)
- 37% crashes on US or state highways (rural and urban)
- 50% crashes on local roads (rural and urban)



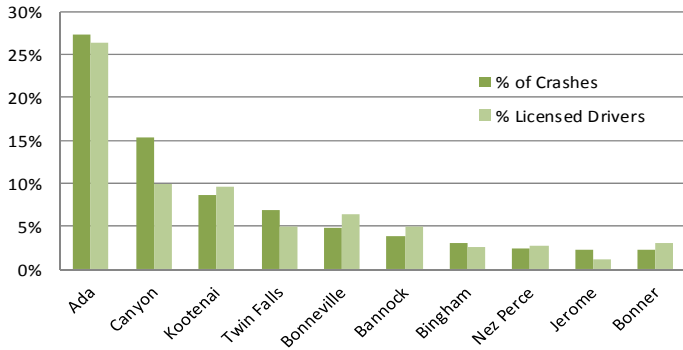
### Special points of interest:

#### Serious Injuries (2012-2016)

- 47% of all serious injury crashes
- 48% of all serious injuries
- 2,468 serious injury crashes
- 3,154 people seriously injured
- 23% seriously injured were unbelted (passenger vehicles only ages 7 and older)
- 39% crashes on rural roads
- 7% crashes on interstates (rural and urban)
- 33% crashes on US or state highways (rural and urban)
- 59% crashes on local roads (rural and urban)

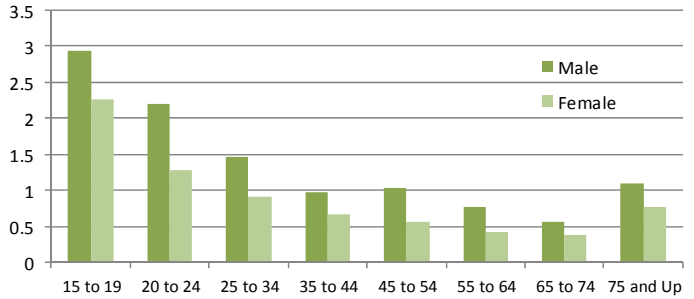
# Aggressive Crash Summary

## Top Ten Counties



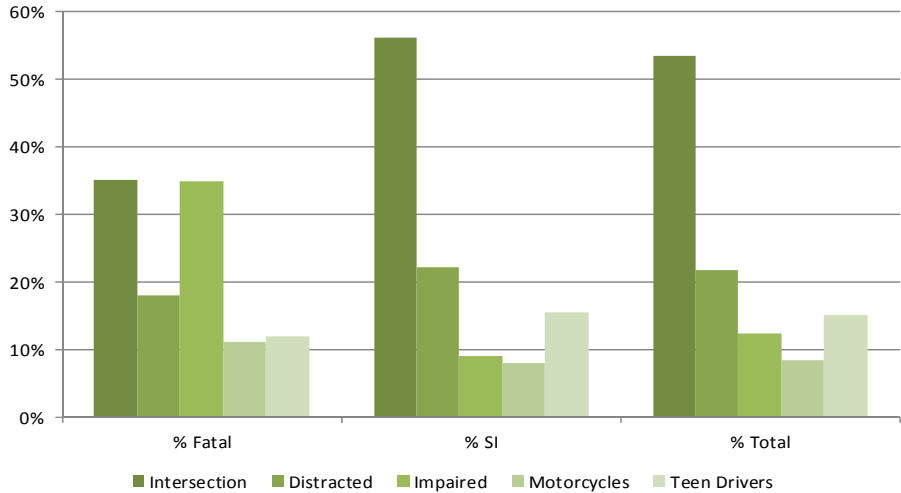
The graph shows the percent of crashes in the county compared to the percent of licensed drivers in a county.

## Age of Drivers

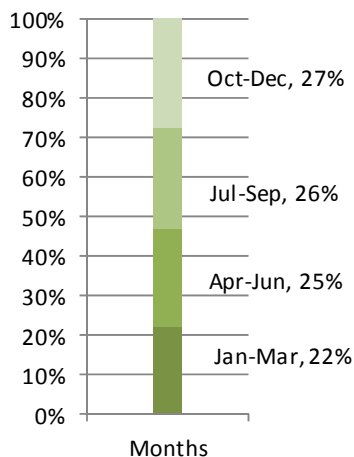


Involvement by gender and age. Involvement is determined by dividing the percentage of the drivers involved in crashes by the percentage of licensed drivers. The expected involvement is 1. A value greater than 1 indicates that the group is over involved in crashes.

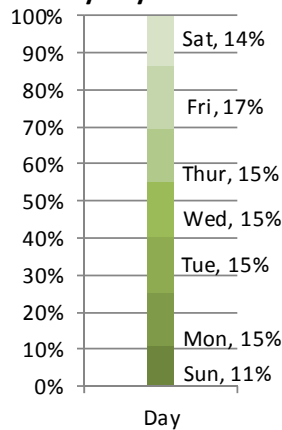
*This graph represents some of the other contributing factors or characteristics in fatal and serious injury aggressive driving crashes.*



## Fatal and SI Crashes by Month



## Fatal and SI Crashes by Day of Week



## Time of Day

