



Summary

At the Idaho Transportation Department (ITD) our Strategic Plan is “Your Safety, Your Mobility, Your Economic Opportunity.” ITD is committed to providing the safest transportation system possible. Each year progress is made to eliminate death and serious injuries (SI) on Idaho’s highways. Traffic safety professionals have addressed behaviors, infrastructure improvements and enforcement countermeasures to reduce crashes. The goal, “Toward Zero Deaths”, is the foundation upon which we work.

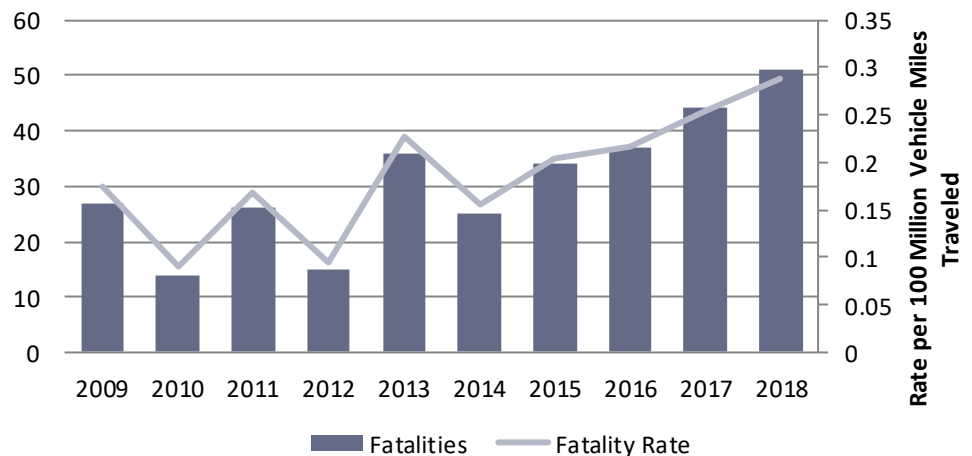
All data and tables are 5 years of data, (2014-2018) except for the Fatalities and Serious Injuries graphs which are 10 years of data (2009-2018). The source of the crash information is the ITD statewide crash database which consists of crash reports completed by all law enforcement agencies in Idaho. For the purpose of crash reporting, commercial motor vehicles are buses, truck tractors, tractor-trailer combinations, trucks with more than two axles, trucks with more than two tires per axle, or trucks exceeding 10,000 pounds gross vehicle weight. This also includes pickups with dual rear wheels and smaller vehicles that are carrying hazardous materials.

Special points of interest:

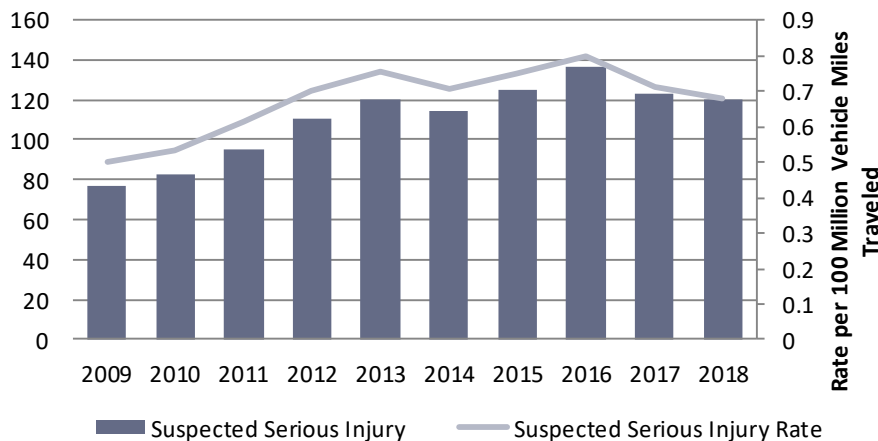
Fatalities (2014-2018)

- 17% of all Fatal Crashes
- 17% of all Fatalities
- 173 Fatal Crashes
- 191 People Killed
- 84% on rural roads
- 25% Interstates (rural and urban)
- 55% US or State Highways (rural and urban)
- 20% Local Roads (rural and urban)

Fatalities



Suspected Serious Injuries



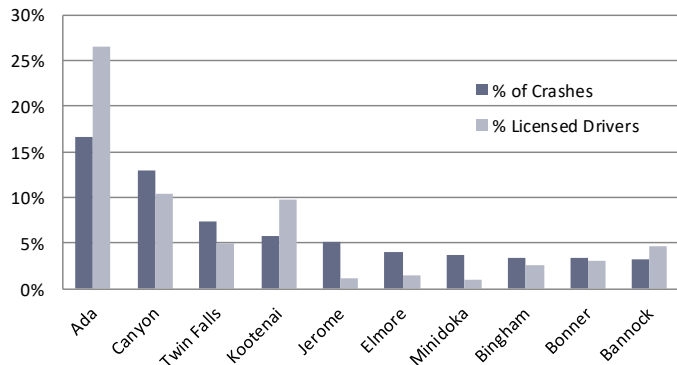
Special points of interest:

Serious Injuries (2014-2018)

- 9% of all Serious Injury Crashes
- 10% of all Serious Injuries
- 454 Crashes
- 620 People Seriously Injured
- 57% on rural roads
- 23% Interstates (rural and urban)
- 41% US or State Highways (rural and urban)
- 36% Local Roads (rural and urban)

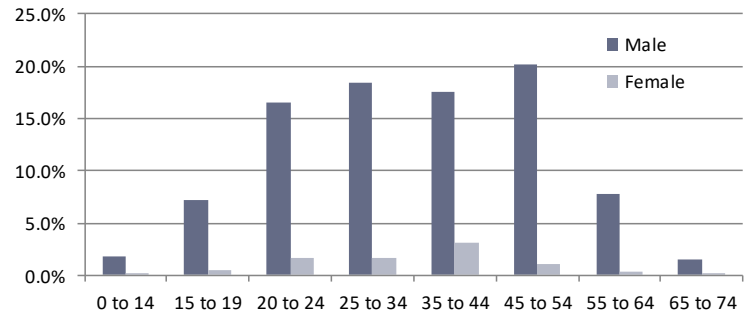
Commercial Crash Summary

Top Ten Counties



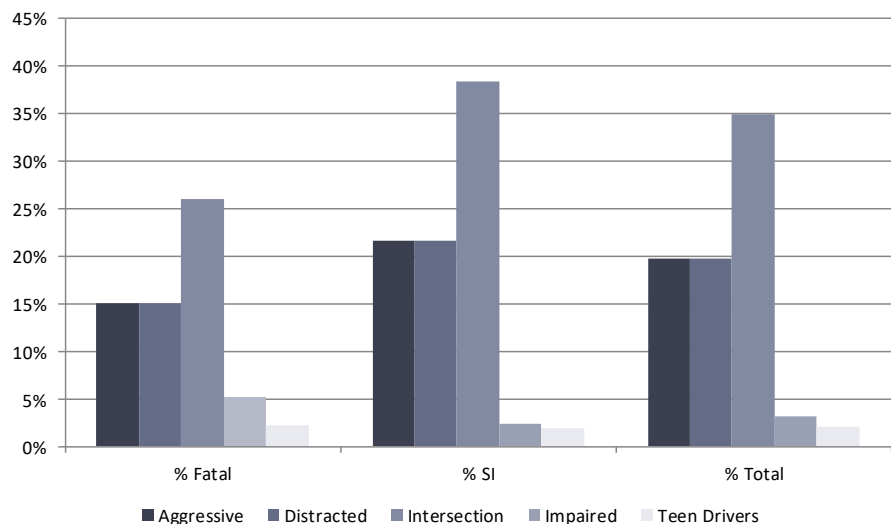
The graph shows the percent of crashes in the county compared to the percent of licensed drivers in a county.

Involvement by Age

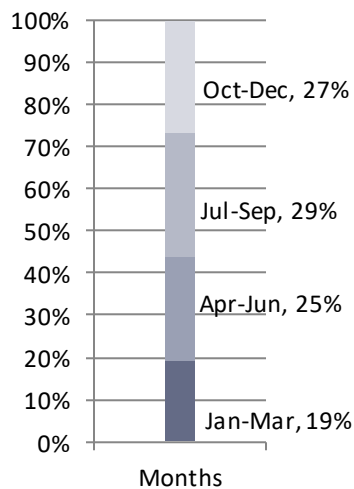


Percentage of drivers by gender and age. The percentages are for commercial drivers only, not all drivers involved in the commercial vehicle crashes.

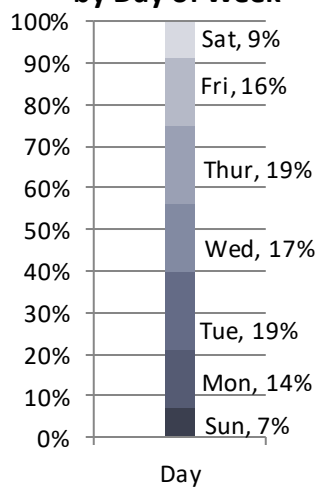
This graph represents some of the other contributing factors or characteristics in fatal and serious injury commercial driving crashes. This is based on the commercial drivers, not all the drivers in the crashes.



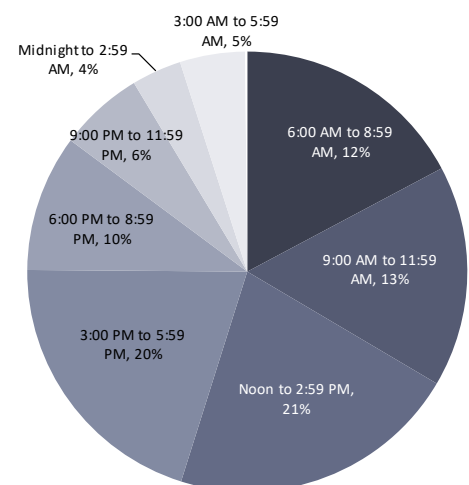
Fatal and SI Crashes by Month



Fatal and SI Crashes by Day of Week



Time of Day



For more information about the Commercial Driving Program contact Captain Scott Hanson, 208.884.7222, scott.hanson@isp.idaho.gov