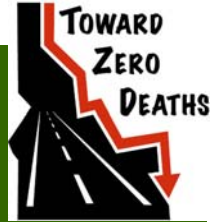


2012-2016 Mature Driver Crash Summary



Summary

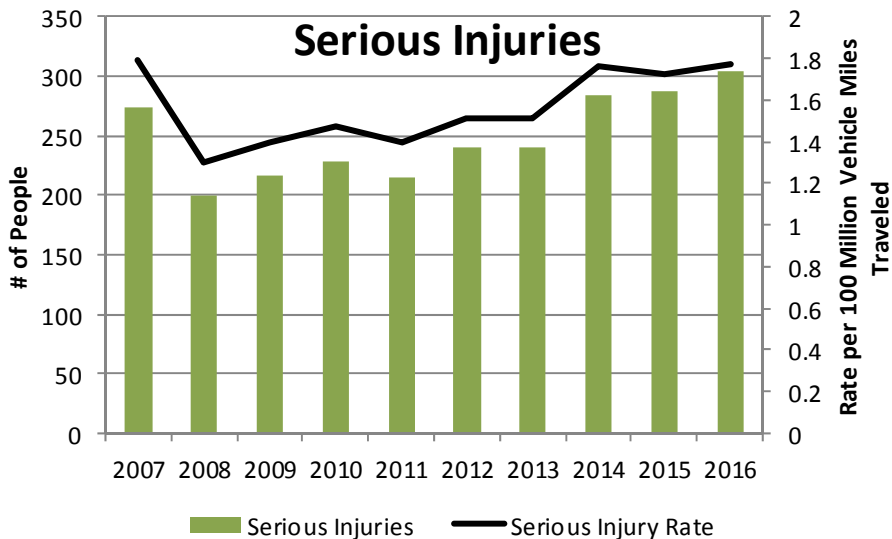
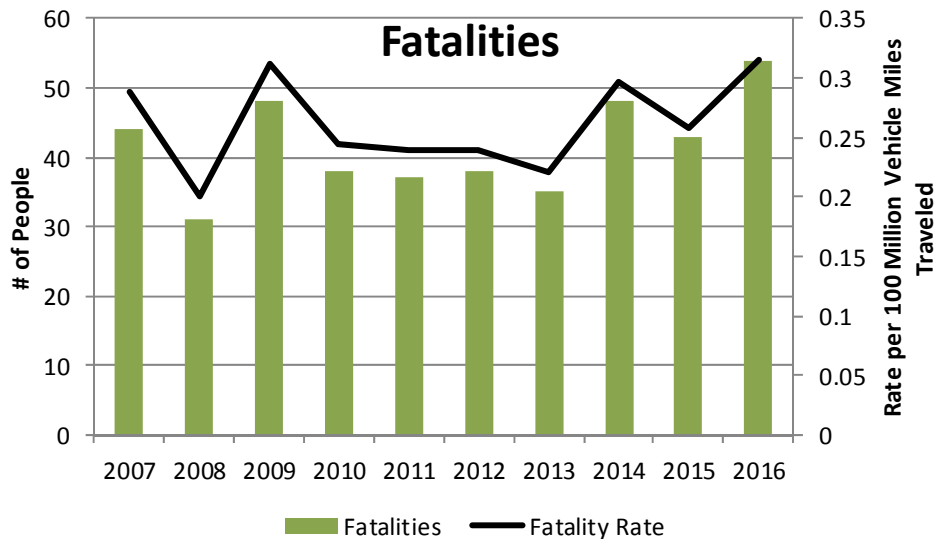
At the Idaho Transportation Department (ITD) our Strategic Plan is “Your Safety, Your Mobility, Your Economic Opportunity.” ITD is committed to providing the safest transportation system possible. Each year progress is made to eliminate death and serious injuries (SI) on Idaho’s highways. Traffic safety professionals have addressed behaviors, infrastructure improvements and enforcement countermeasures to reduce crashes. The goal, “Toward Zero Deaths”, is the foundation upon which we work.

All data and tables are 5 years of data, (2012-2016) except for the Fatalities and Serious Injuries graphs which are 10 years of data (2007-2016). The source of the crash information is the ITD statewide crash database which consists of crash reports completed by all law enforcement agencies in Idaho. Mature drivers are those drivers over the age of 65 years of age.

Special points of interest:

Fatalities (2012-2016)

- 20% of Fatal Crashes
- 218 People Killed (169 were 65 or older)
- 38% killed were unbelted (passenger vehicles only ages 65 and older)
- 71% crashes on rural roads
- 12% crashes on interstates (rural and urban)
- 46% crashes on US or state highways (rural and urban)
- 42% crashes on local roads (rural and urban)



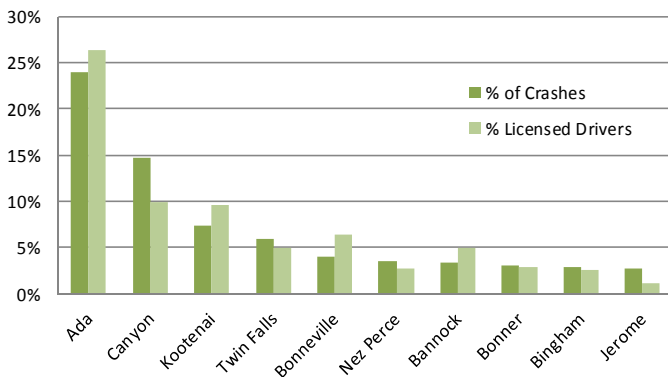
Special points of interest:

Serious Injuries (2012-2016)

- 21% of serious injury crashes
- 1355 people seriously injured (648 were 65 or older)
- 13% seriously injured were unbelted (passenger vehicles only ages 65 and older)
- 55% crashes on rural roads
- 13% crashes on interstates (rural and urban)
- 64% crashes on US or state highways (rural and urban)
- 32% crashes on local roads (rural and urban)

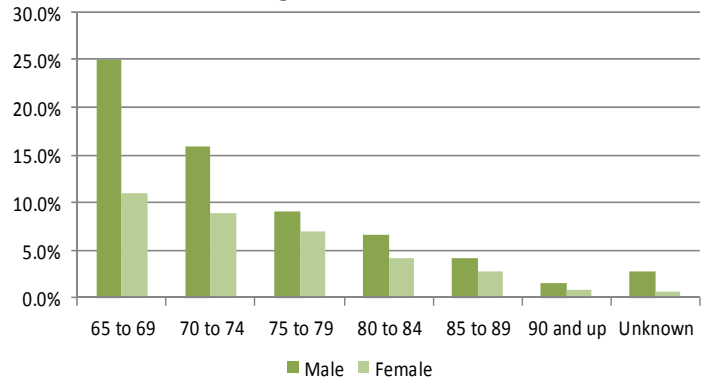
Mature Driver Crash Summary

Top Ten Counties



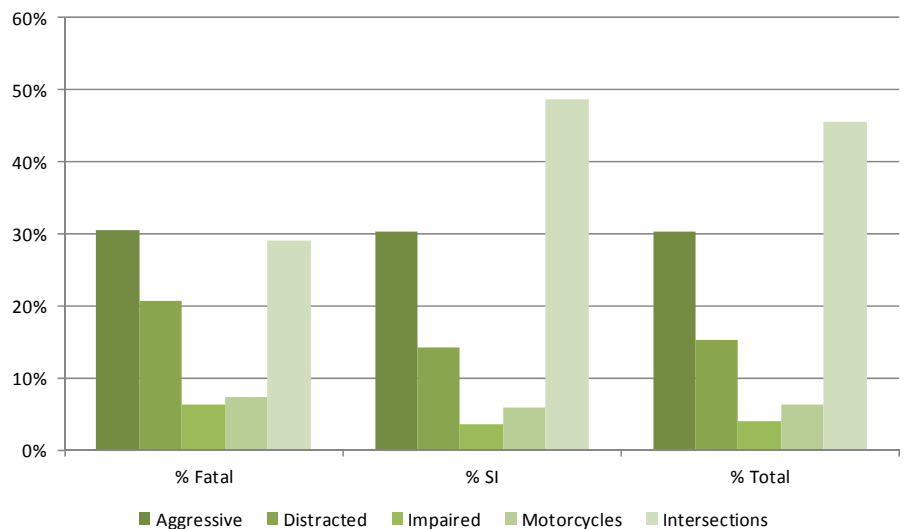
The graph shows the percent of crashes in the county compared to the percent of licensed drivers in a county.

Age of Drivers

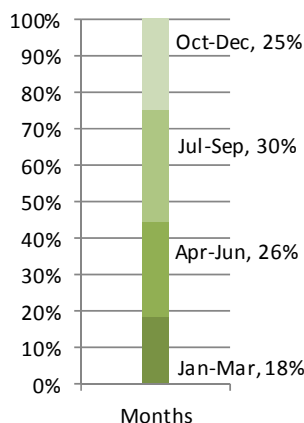


Percentage of mature drivers involved in fatal or serious injury crashes by gender and age. Percentages are for crashes involving 65 and older drivers and not on all crashes.

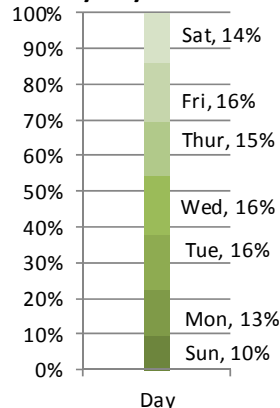
This graph represents some of the other contributing factors or characteristics in fatal and serious injury mature driving crashes. Aggressive, distracted and impaired are based on the behavior of the mature driver only.



Fatal and SI Crashes by Month



Fatal and SI Crashes by Day of Week



Time of Day

