

REVISIONS			
NO.	DATE	BY	DESCRIPTION

DESIGNED	
DESIGN CHECKED	
DETAILED	
DRAWING CHECKED	

SCALES SHOWN ARE FOR 11" X 17" PRINTS ONLY
CADD FILE NAME dd-002.dgn
DRAWING DATE:

IDAHO TRANSPORTATION DEPARTMENT

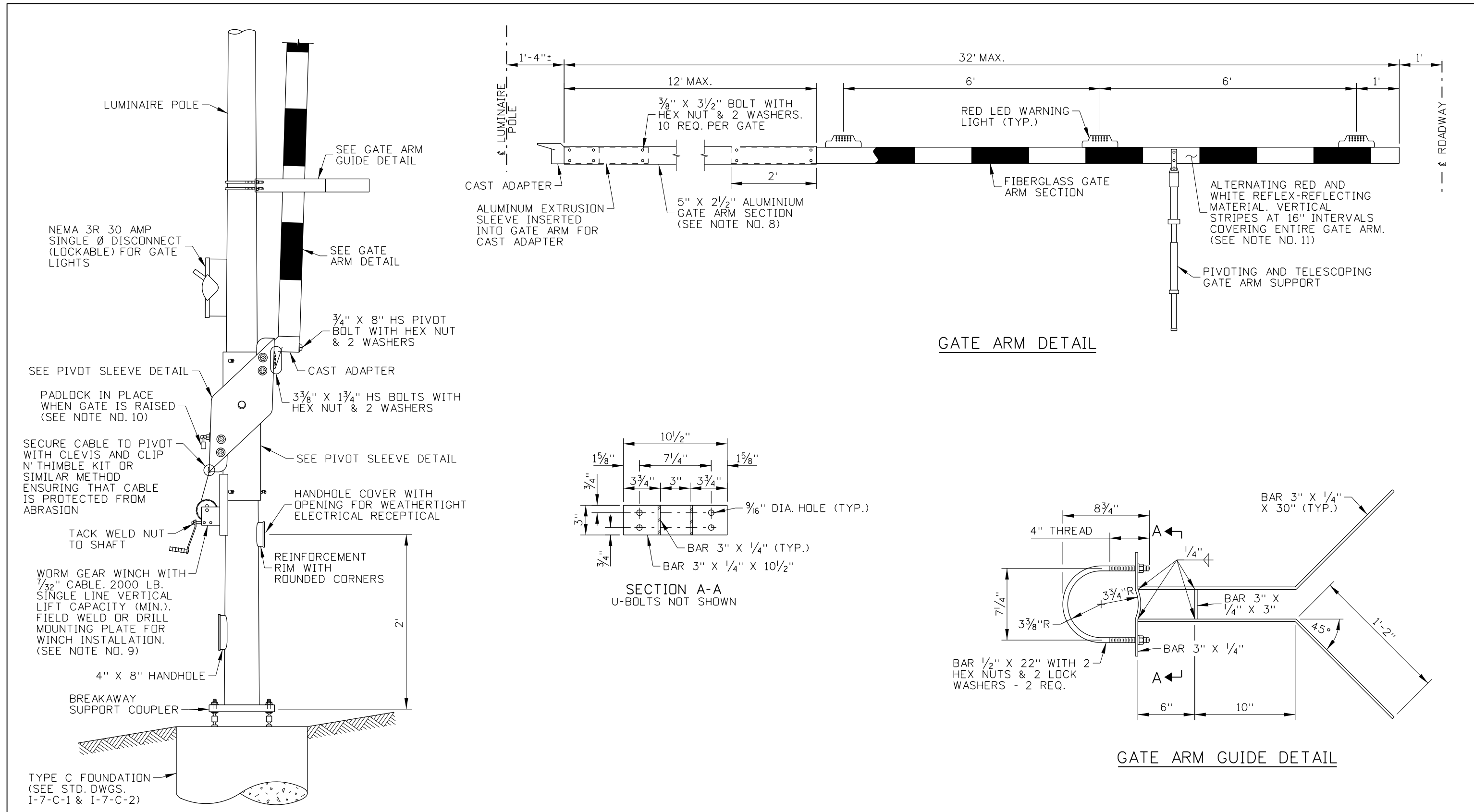


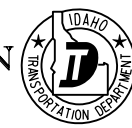
PROJECT NO.	dd-002
-------------	--------

ROAD CLOSURE DROP GATE AND LIGHTING	
--	--

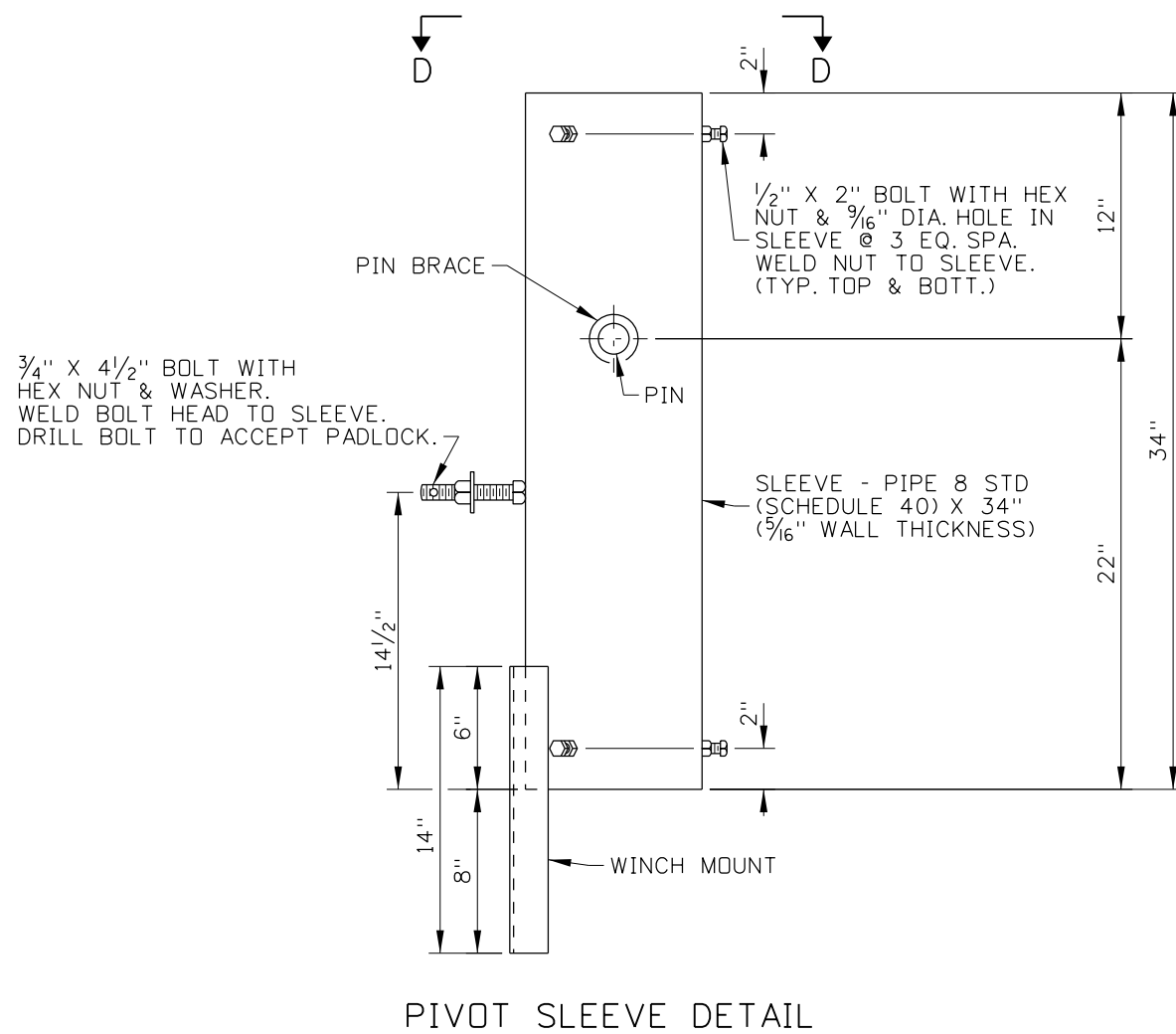
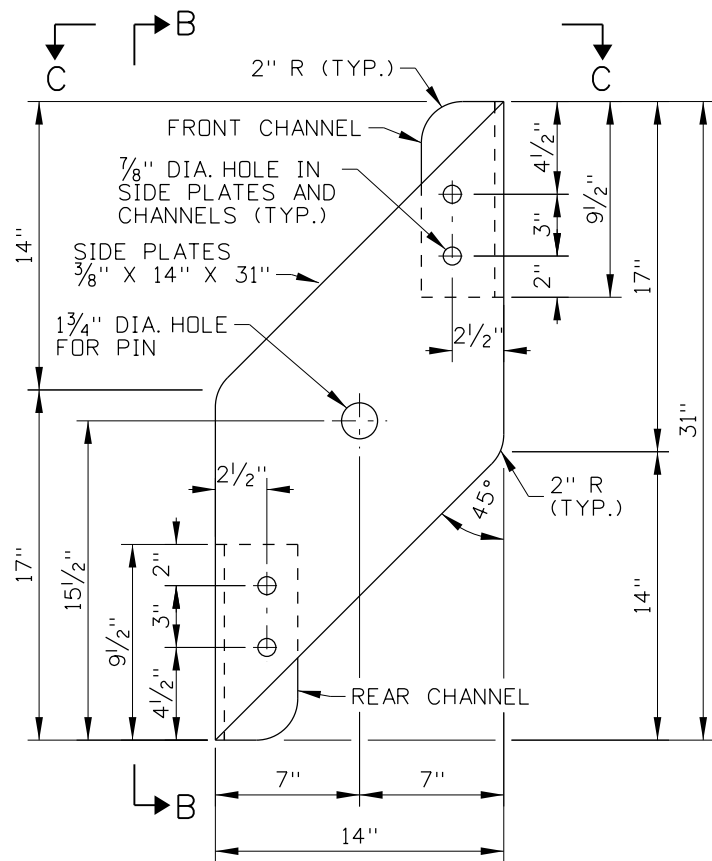
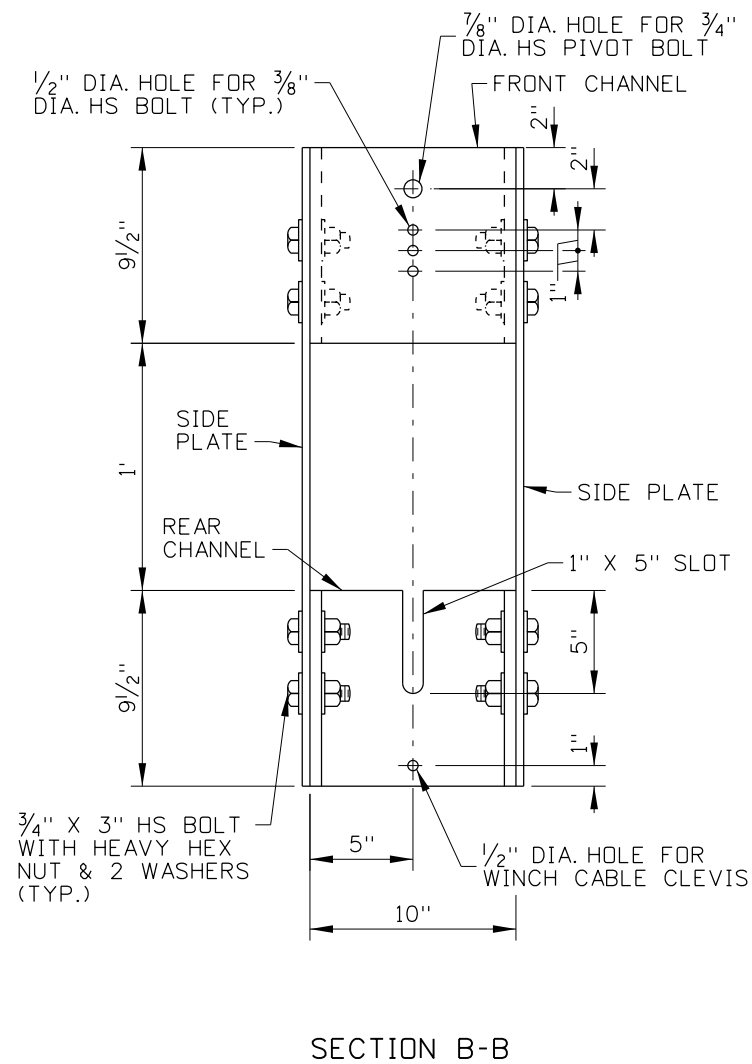
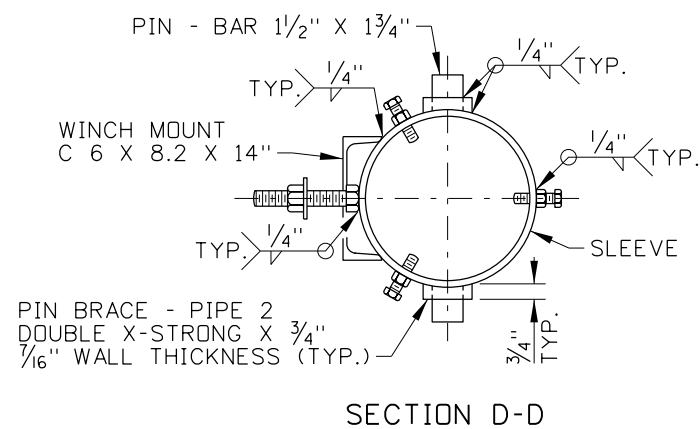
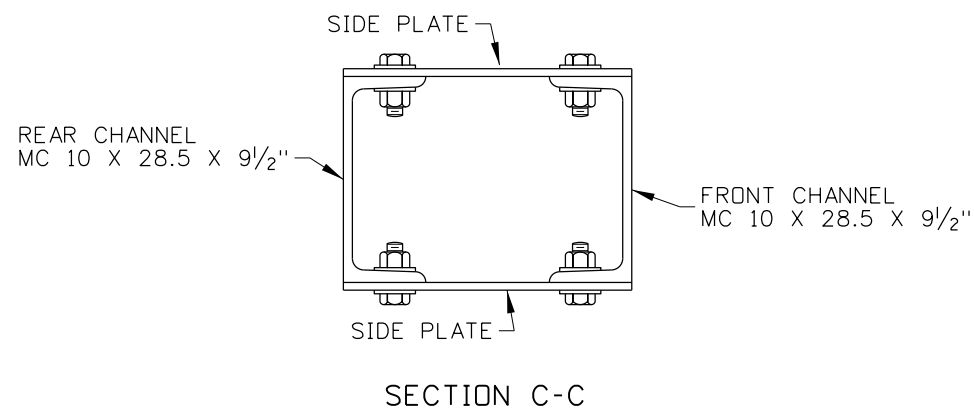
English
COUNTY
KEY NUMBER
SHEET 1 OF 4

NOT APPROVED
PRELIMINARY
FOR CONSTRUCTION



REVISIONS				DESIGNED	SCALES SHOWN ARE FOR 11" X 17" PRINTS ONLY IDAHO TRANSPORTATION DEPARTMENT 	PROJECT NO.	dd-002	English COUNTY KEY NUMBER SHEET 2 OF 4
NO.	DATE	BY	DESCRIPTION	DESIGN CHECKED			ROAD CLOSURE DROP GATE AND LIGHTING	
				DETAILED				
				DRAWING CHECKED				
				CADD FILE NAME dd-002.dgn				
				DRAWING DATE:				

NOT APPROVED
 PRELIMINARY
 FOR CONSTRUCTION



SIDE PLATE DETAIL

PIVOT SLEEVE DETAIL

REVISIONS			
NO.	DATE	BY	DESCRIPTION

DESIGNED	
DESIGN CHECKED	
DETAILED	
DRAWING CHECKED	

SCALES SHOWN ARE FOR 11" X 17" PRINTS ONLY
CADD FILE NAME dd-002.dgn
DRAWING DATE:

IDAHO TRANSPORTATION DEPARTMENT

PROJECT NO.	dd-002
-------------	--------

ROAD CLOSURE DROP GATE AND LIGHTING
--

English
COUNTY
KEY NUMBER
SHEET 3 OF 4

NOT APPROVED
PRELIMINARY FOR CONSTRUCTION

OVERLAP SEAM 1" AND RIVET OR FASTEN WITH SELF TAPPING STAINLESS STEEL SCREWS

BEND ALUMINUM SKIRT TO FIT TIGHTLY AROUND COUPLINGS

BREAKAWAY SUPPORT COUPLING (TYP.)
6" MIN.
2" RIGID STEEL CONDUIT

PULL SLACK FROM POLE BASE & RETAIN IN JUNCTION BOX. (BREAKAWAY BASES ONLY)

CONDUIT SIZE AS SHOWN ON THE PLANS

WIRE, SIZE, AND TYPE AS SHOWN ON THE PLANS

WATERPROOF SPLICE KIT (TYP.)

TYPICAL JUNCTION BOX INSTALLATION DETAIL

SEE FUSED "INLINE" WIRE CONNECTOR DETAIL

NON-FUSABLE LINK REQUIRED IN GROUND WIRE ON BREAKAWAY POLES

POLE
HAND HOLE

WIRE-NO. 12 A.W.G. STRANDED COPPER THWN INSULATION FROM WIRE CONNECTOR TO LUMINAIRE

WIRE-NO. 12 A.W.G. STRANDED COPPER THWN INSULATION WIRE FROM CONNECTOR TO DISCONNECT BOX

SEE BREAKAWAY STEEL COUPLER DETAIL

BONDING BUSHING

FOUNDATION (SEE STD. DWGS. I-7-C-1 & I-7-C-2)

2" RIGID STEEL CONDUIT

2" RIGID STEEL CLOSE NIPPLE
2" RIGID STEEL COUPLING. ENSURE THAT THE TOP OF THE COUPLING IS FLUSH WITH THE TOP OF THE FOUNDATION.

RIGID STEEL CONDUIT SWEEP (SEE NOTE NO. 12 AND THE RIGID STEEL CONDUIT BEND TABLE)

BREAKAWAY STEEL COUPLER INLINE TYPE CONNECTOR INSTALLATION (SEE NOTE NOS. 12, 13, & 14)

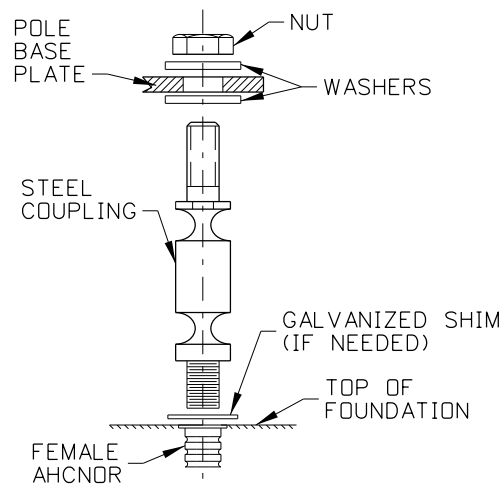
RIGID STEEL CONDUIT BEND TABLE	
CONDUIT DIAMETER	MINIMUM FIELD BEND RADIUS
1"	6"
1 1/4"	8"
1 1/2"	10"
2"	12"
2 1/2"	15"
3"	18"
3 1/2"	21"
4"	24"



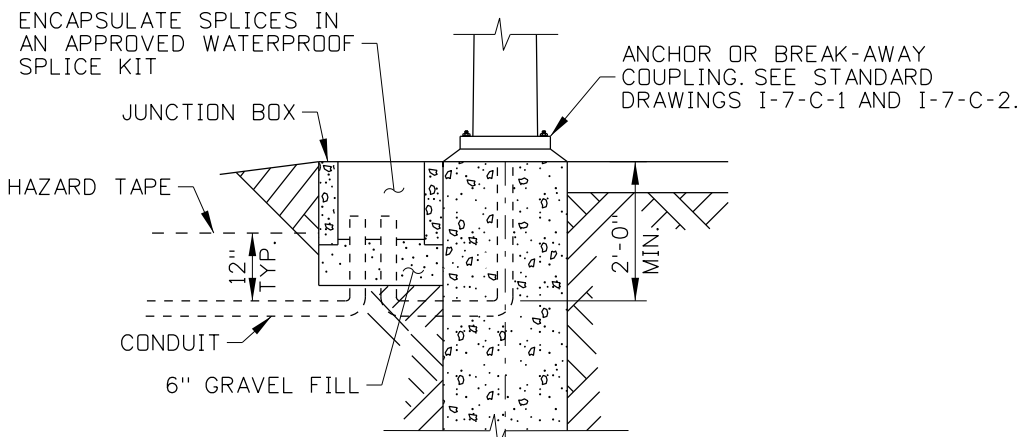
FUSED "INLINE" WIRE CONNECTOR DETAIL
SEE NOTE NO. 14

NOTES

- ENGINEER WILL VERIFY THE LOCATION OF THE ROAD CLOSURE GATES AND MOUNTING HEIGHT OF THE GATE ARM PIVOT.
- SEE STANDARD DRAWINGS I-7-C-1 AND I-7-C-2 FOR THE POLE FOUNDATION.
- HEIGHT OF GATE ARM GUIDES MAY BE VARIED AS REQUIRED FOR WARNING LIGHT CLEARANCE.
- USE 7 GAUGE ROUND STEEL LUMINAIRE POLES WITH A UNIFORM TAPER.
- GALVANIZE STEEL LUMINAIRE POLES, MAST ARMS, DROP GATE PIVOTS, SUPPORTS, GUIDES, AND HARDWARE.
- PAINT EXPOSED BOLT THREADS WITH TWO COATS OF ZINC RICH PAINT CONFORMING WITH THE REQUIREMENTS OF ASTM A780, AFTER ASSEMBLY OF ROAD CLOSURE GATE.
- USE BOLTS CONFORMING TO ASTM A307, GRADE A, UNLESS DESIGNATED AS HS (HIGH STRENGTH), THEN USE BOLTS CONFORMING TO ASTM A325.
- USE FIBERGLASS AND ALUMINUM GATE ARM AND CAST ADAPTER.
- USE WORM GEAR WINCH AND CABLE.
- WHEN THE GATE IS FULLY RAISED, ENSURE THAT THE NUT AND WASHER ARE PLACED SNUGLY AGAINST THE OUTSIDE OF THE REAR CHANNEL AND PADLOCK IN PLACE. SUPPLY ONE HEAVY, WEATHERPROOF PADLOCK WITH 2 KEYS FOR EACH GATE ARM PIVOT. FOR PAIRED PIVOTS (DIVIDED HIGHWAY), ENSURE PADLOCKS ARE KEYED ALIKE.
- IF THE GATE IS INSTALLED ON A ONE-WAY HIGHWAY OR RAMP, THE RETROREFLECTORIZATION MAY BE OMITTED ON THE SIDE OF THE GATE FACING AWAY FROM APPROACHING TRAFFIC.
- BEND CONDUIT SO THAT THE CONDUIT INSIDE DIAMETER IS NOT REDUCED. MINIMUM RADII FOR THE INNER EDGE OF FIELD BENDS ARE SHOWN IN THE RIGID STEEL CONDUIT BEND TABLE. USE RIGID STEEL CONDUIT FOR ELBOWS, RISERS, AND BENDS GREATER THAN 45°.
- PROVIDE 36" OF SLACK IN CONDUCTORS AT HAND HOLE FOR MAINTENANCE. AFTER FUSE INSTALLATION, PULL SLACK FROM LOAD SIDE CONDUCTORS TO THE POINT WHERE THE FUSE HOLDERS MEET THE CONDUIT BUSHING. FASTEN GROUND WIRE TO GROUNDING DEVICE NEAR THE HAND HOLE.
- NON-FUSED WIRE CONNECTORS REQUIRED ON NEUTRAL OF 120 & 480 VOLT TO GROUND CIRCUITS. NON-FUSIBLE LINK REQUIRED ON GROUNDING CONDUCTORS OF BREAKAWAY INSTALLATIONS. FUSED WIRE CONNECTORS REQUIRED ON 120, 240, & 480 VOLT PHASE TO PHASE AND PHASE TO GROUND CIRCUITS.
- DRAWINGS NOT TO SCALE.



BREAKAWAY STEEL COUPLER DETAIL



TYPICAL JUNCTION BOX INSTALLATION

REVISIONS			
NO.	DATE	BY	DESCRIPTION

DESIGNED	
DESIGN CHECKED	
DETAILED	
DRAWING CHECKED	

SCALES SHOWN ARE FOR 11" X 17" PRINTS ONLY
CADD FILE NAME dd-002.dgn
DRAWING DATE:

IDAHO TRANSPORTATION DEPARTMENT

PROJECT NO.

dd-002
ROAD CLOSURE DROP GATE AND LIGHTING

English
COUNTY
KEY NUMBER
SHEET 4 OF 4

NOT APPROVED
PRELIMINARY FOR CONSTRUCTION