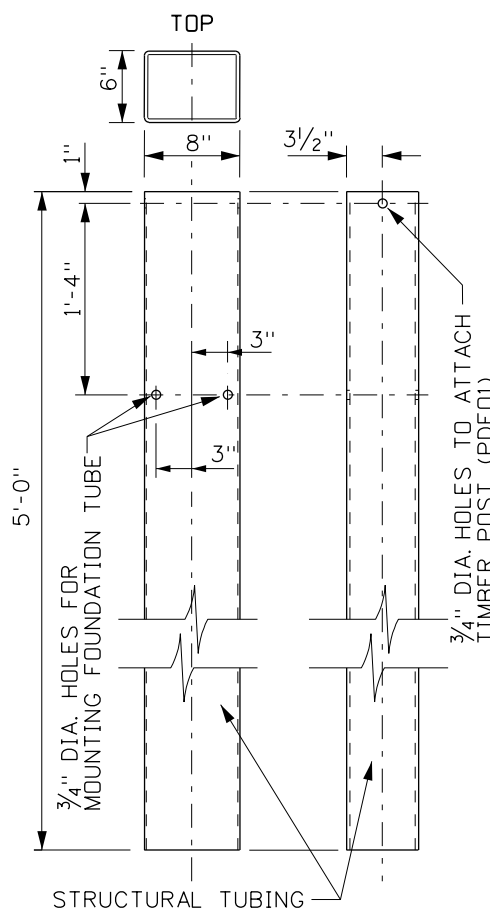
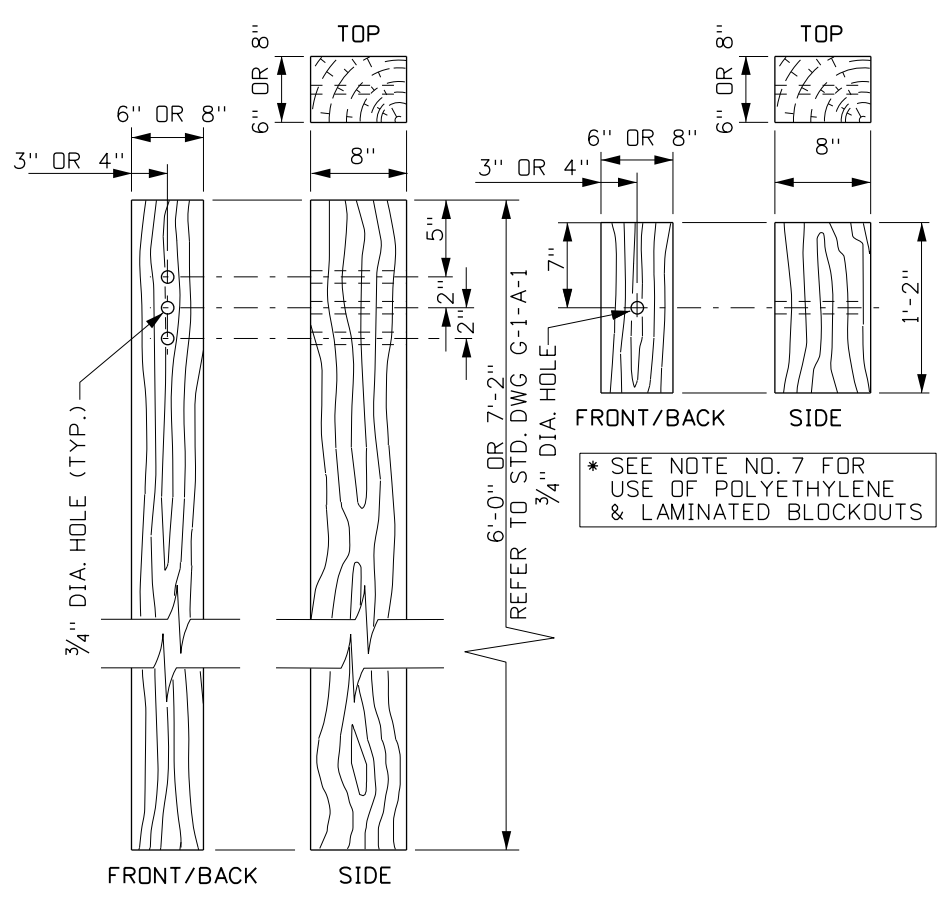


MODIFIED BCT TIMBER POST



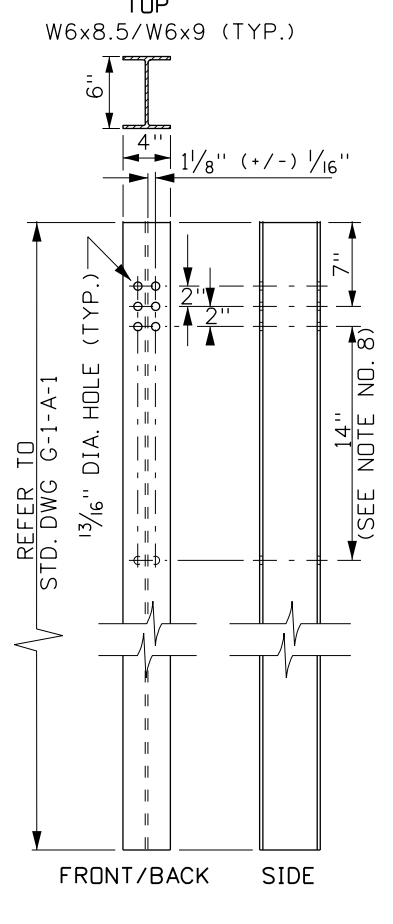
FOUNDATION TUBE

ITEM NO. PTE05

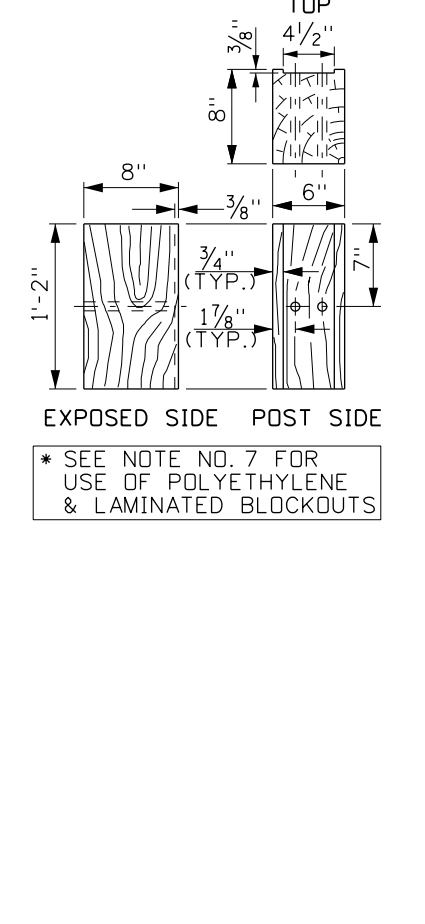


* WOODEN GUARDRAIL POST & BLOCKOUT

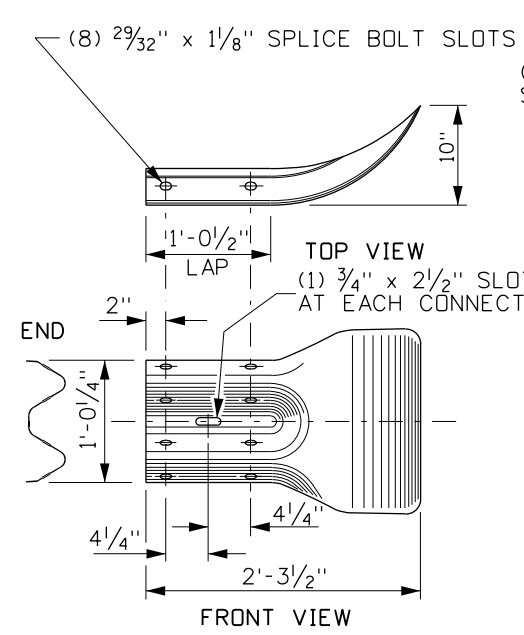
* SEE NOTE NO. 7 FOR USE OF POLYETHYLENE & LAMINATED BLOCKOUTS



* STEEL GUARDRAIL POST & MODIFIED BLOCKOUT

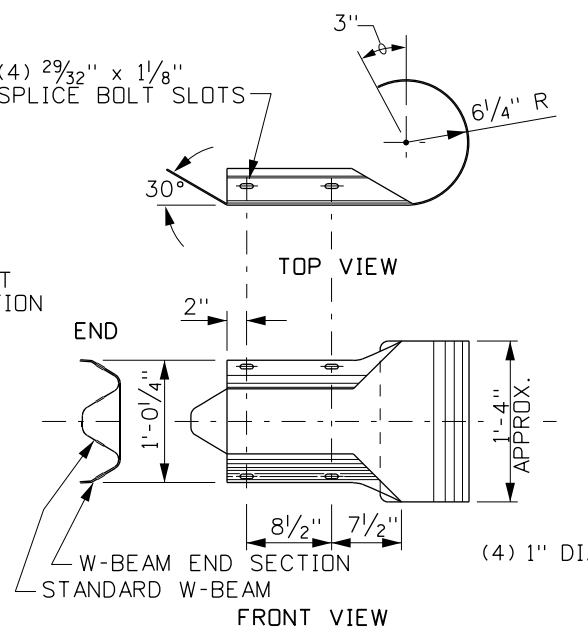


* SEE NOTE NO. 7 FOR USE OF POLYETHYLENE & LAMINATED BLOCKOUTS



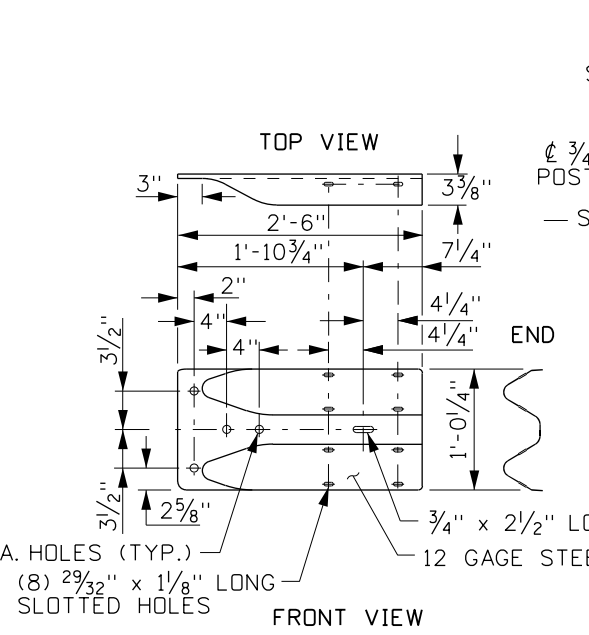
W-BEAM END SECTION (FLARED)

ITEM NO. RWE01a



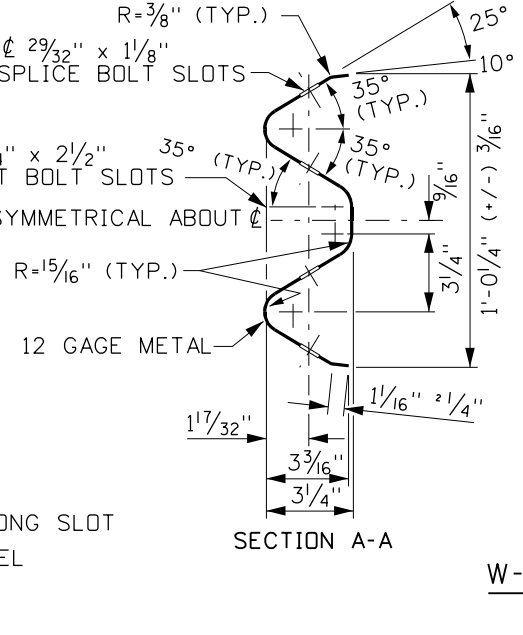
W-BEAM END SECTION (ROUNDED)

ITEM NO. RWE03a

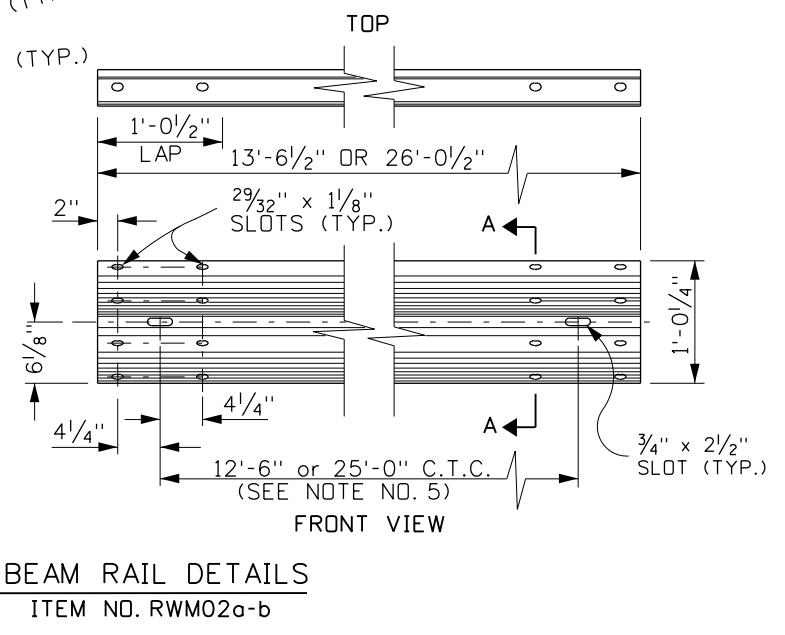


W-BEAM TERMINAL CONNECTOR

ITEM NO. RWE02a



SECTION A-A



W-BEAM RAIL DETAILS

ITEM NO. RWM02a-b

REVISIONS			
NO.	DATE	BY	DESCRIPTION

DESIGNED	
DESIGN CHECKED	
DETAILED	
DRAWING CHECKED	

SCALES SHOWN ARE FOR 11" X 17" PRINTS ONLY

CADD FILE NAME: g-3_1210.dgn

DRAWING DATE: JUNE, 1996

IDAHO TRANSPORTATION DEPARTMENT

PROJECT NO. _____

STANDARD DETAIL G-3

W-BEAM GUARDRAIL POSTS, BLOCKOUTS, & HARDWARE

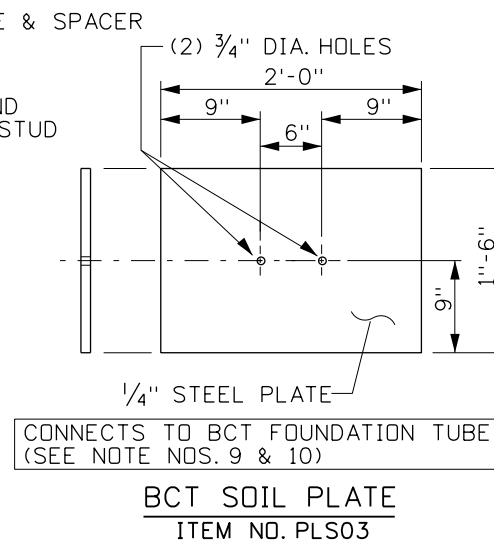
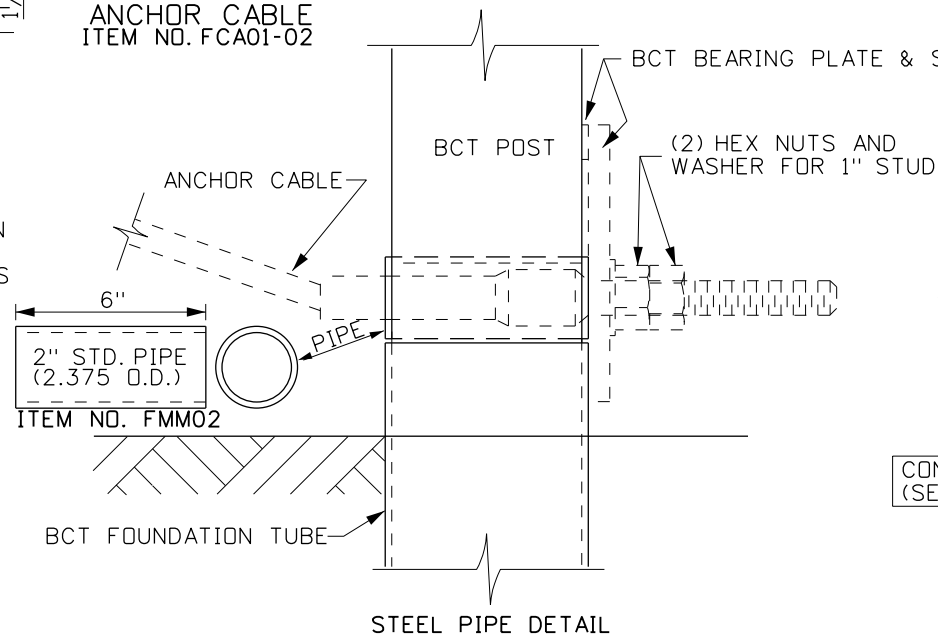
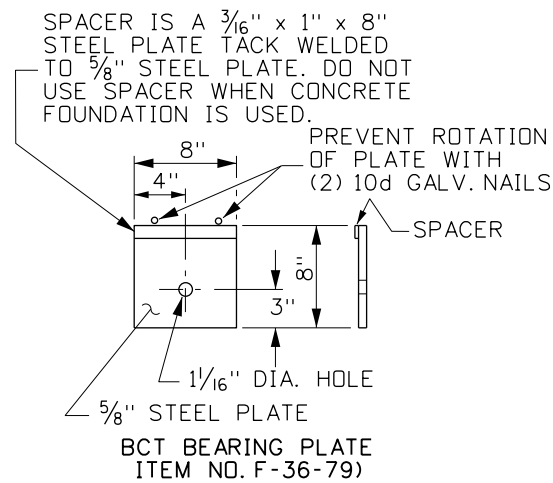
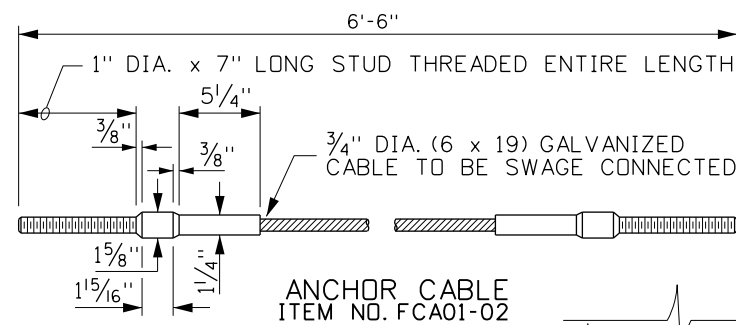
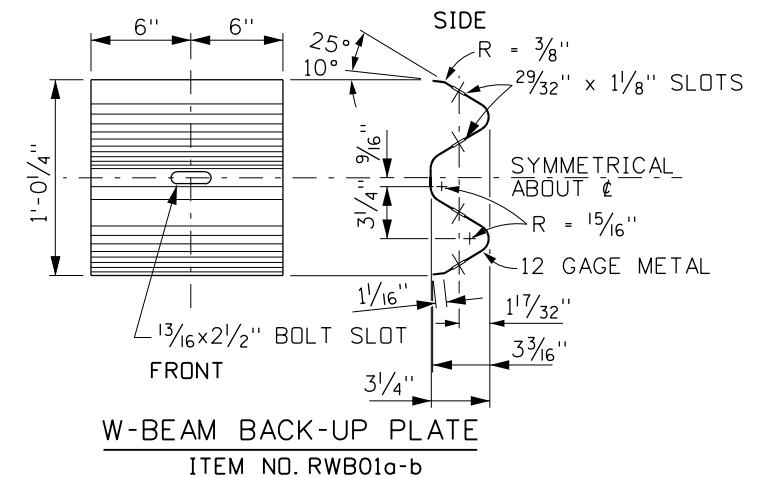
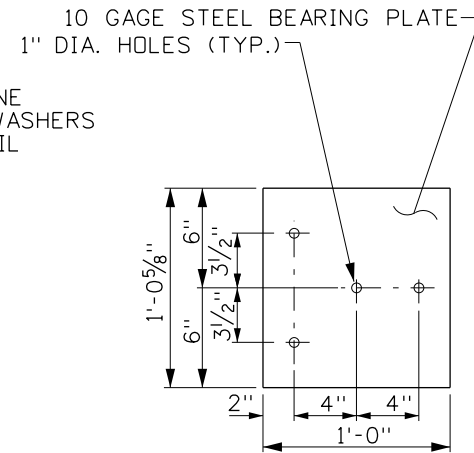
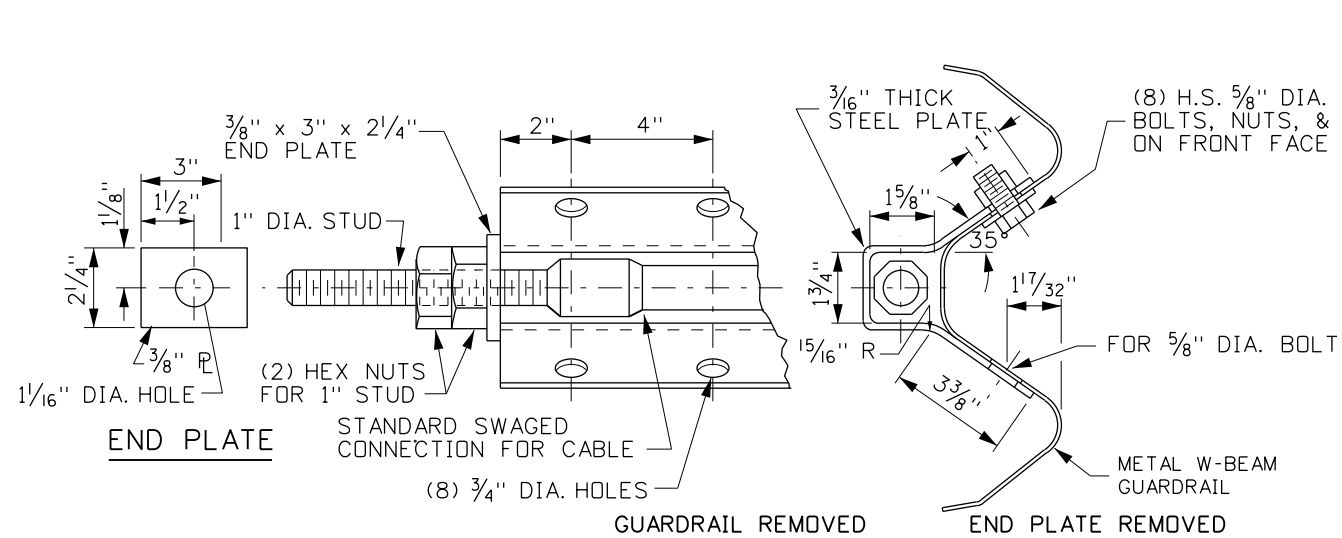
English

COUNTY _____

KEY NUMBER _____

SHEET 1 OF 2

NOT APPROVED
PRELIMINARY
FOR CONSTRUCTION



NOTES

1. ALL GUARDRAIL AND ACCESSORIES SHALL CONFORM TO THE "A GUIDE TO STANDARDIZED HIGHWAY BARRIER HARDWARE".
2. W-BEAM RAIL AND TERMINAL SECTIONS SHALL BE GALVANIZED IN ACCORDANCE WITH AASHTO M180, CLASS A, TYPE 2 WITH THE EXCEPTION THAT ALL RAIL AND TERMINAL SECTIONS SHALL BE GALVANIZED AFTER FABRICATION WITH FABRICATION TO INCLUDE FORMING, CUTTING, SHEARING, PUNCHING, DRILLING BENDING, WELDING AND RIVETING.
3. NO TERMINAL HARDWARE OR TERMINAL ACCESSORY SHALL BE FIELD OR OTHERWISE MODIFIED. SLIGHT FIELD FITTING MODIFICATIONS ARE ALLOWED ON STANDARD GUARD-RAIL INSTALLATIONS. ANY DRILLING, CUTTING (NOT BY HEAT), OR PUNCHING TO STANDARD GUARDRAIL ITEMS SHALL BE PAINTED WITH TWO COATS OF FORMULA 14-82 ZINC SILICATE PAINT.
4. TIMBER POSTS AND BLOCKS SHALL BE TREATED. REFER TO SECTION 710 - TIMBER AND PRESERVATIVES, OF THE "ITD STANDARD SPECIFICATIONS FOR HIGHWAY CONSTRUCTION".
5. 12'-6" W-BEAM METAL GUARDRAIL LENGTHS SHALL BE USED UNLESS OTHERWISE SPECIFIED.
6. W-BEAM METAL GUARDRAIL SECTIONS SHALL BE PRECURVED FOR CURVES LESS THAN 150 FT. RADII (RADIUS TO FACE OF RAIL).
7. W-BEAM GUARDRAIL POSTS MAY BE WOOD OR STEEL; HOWEVER, POSTS AND BLOCKOUTS MAY BE MADE OF POLYETHYLENE PLASTIC, WOOD, LAMINATED WOOD, OR OTHER PRODUCTS PROVIDED THEY ARE LISTED IN AND USED ACCORDING TO THE IDAHO TRANSPORTATION DEPARTMENT'S "QUALIFIED PRODUCTS LIST".
8. THE POST HOLE(S) FOR RUBRAIL ON THE W6x8.5 OR W6x9 POST ARE NECESSARY ONLY WHEN A RUBRAIL IS TO BE INSTALLED.
9. THE BCT SOIL PLATE IS TO BE USED WITH THE BCT FOUNDATION TUBE. IT IS TO BE ATTACHED WITH BOLTS. THE PLATE SHALL BE INSTALLED WHEN THE ENGINEER DETERMINES THAT FIELD CONDITIONS WARRANTS ITS USE.
10. SOIL PLATES SHALL CONFORM TO ASTM A36 AND STRUCTURAL TUBING TO ASTM A500. WELDING SHALL MEET ALL REQUIREMENTS OF THE AMERICAN WELDING SOCIETY D1.1.
11. ALL WOODEN BREAKAWAY POSTS AND BLOCKOUTS WITH DRILLED HOLES SHALL BE PRESERVATIVE TREATED PRIOR TO INSTALLATION. PRESERVATIVE TREATMENT SHALL BE IN ACCORDANCE WITH AASHTO M133 AND WITH ITD STANDARD SPECIFICATIONS.
12. NOT TO SCALE.

REVISIONS			
NO.	DATE	BY	DESCRIPTION

DESIGNED	
DESIGN CHECKED	
DETAILED	
DRAWING CHECKED	

SCALES SHOWN ARE FOR 11" X 17" PRINTS ONLY

CADD FILE NAME g-3_1210.dgn

DRAWING DATE: JUNE, 1996

IDAHO TRANSPORTATION DEPARTMENT

PROJECT NO. _____

STANDARD DETAIL G-3

W-BEAM GUARDRAIL POSTS, BLOCKOUTS, & HARDWARE

English

COUNTY _____

KEY NUMBER _____

SHEET 2 OF 2

NOT APPROVED
PRELIMINARY
FOR CONSTRUCTION