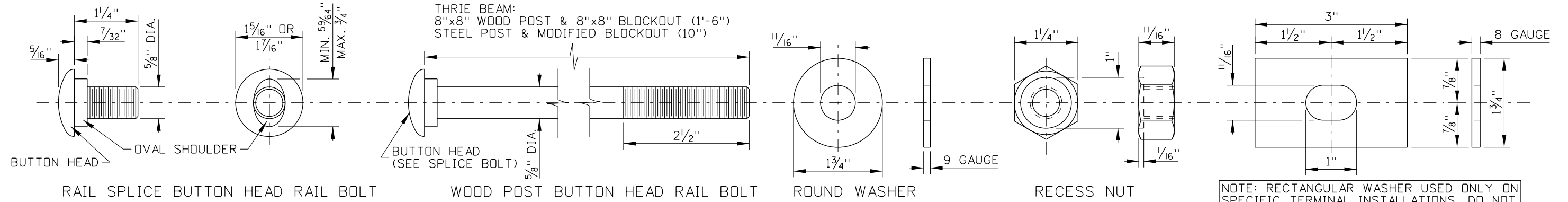


W-BEAM:
 6"x8" WOOD POST & 6"x8" BLOCKOUT (1'-6")
 8"x8" WOOD POST & 8"x8" BLOCKOUT (1'-6")
 STEEL POST & MODIFIED BLOCKOUT (10")

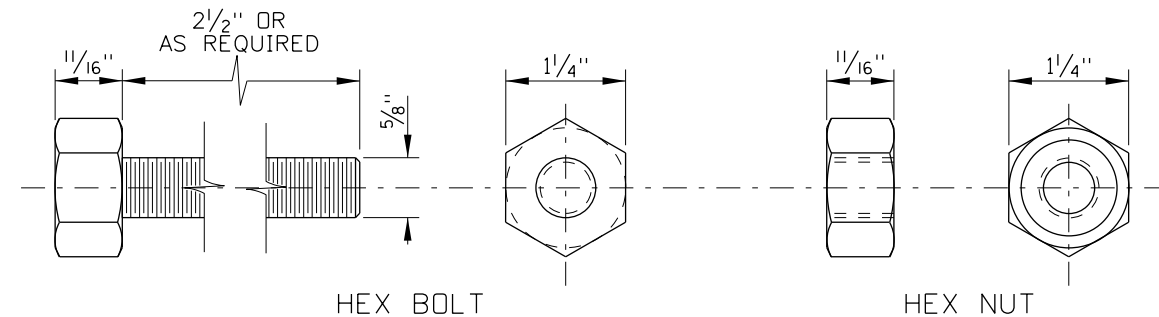
THRIE BEAM:
 8"x8" WOOD POST & 8"x8" BLOCKOUT (1'-6")
 STEEL POST & MODIFIED BLOCKOUT (10")



BOLTING HARDWARE

NOTE: RECTANGULAR WASHER USED ONLY ON SPECIFIC TERMINAL INSTALLATIONS. DO NOT USE ON REGULAR GUARDRAIL INSTALLATIONS

RECTANGULAR WASHER (F-12-73)

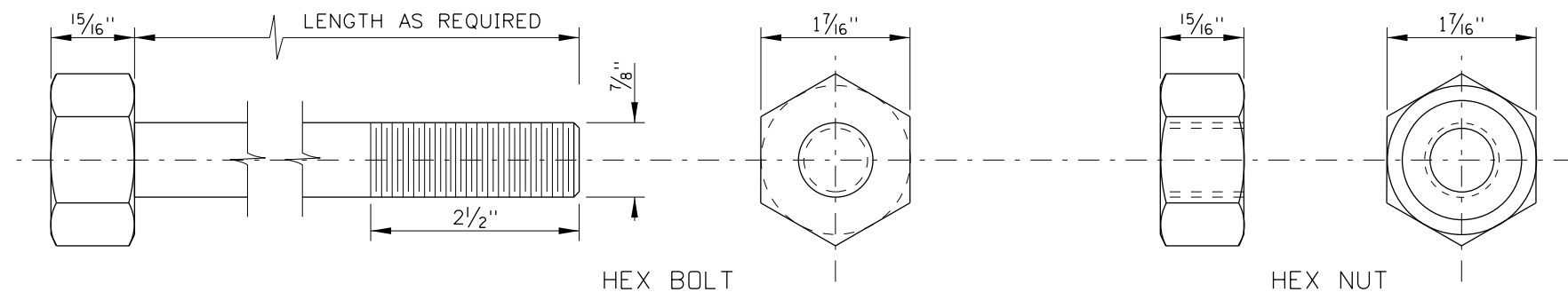


STEEL POST BOLTING HARDWARE

ITEM NO. FBX16a

NOTES

1. ALL GUARDRAIL BOLTING HARDWARE AND ACCESSORIES SHALL CONFORM TO THE SPECIFICATIONS AS INDICATED IN THE AASHTO "A GUIDE TO STANDARDIZED HIGHWAY BARRIER HARDWARE".
2. THE BOLTING HARDWARE SHOWN IS USED FOR BOTH W-BEAM AND THRIE BEAM INSTALLATIONS.
3. NOT TO SCALE.



HIGH STRENGTH BOLTING HARDWARE

ITEM NO. FBX16b-36b

REVISIONS			
NO.	DATE	BY	DESCRIPTION

DESIGNED	
DESIGN CHECKED	
DETAILED	
DRAWING CHECKED	

SCALES SHOWN ARE FOR 11" X 17" PRINTS ONLY

CADD FILE NAME: g-4_0406.dgn

DRAWING DATE: APRIL, 2006

IDAHO TRANSPORTATION DEPARTMENT

PROJECT NO.:

STANDARD DETAIL G-4

GUARDRAIL BOLTING HARDWARE FOR W-BEAM & THRIE BEAM

English

COUNTY

KEY NUMBER

SHEET 1 OF 1

NOT APPROVED
 PRELIMINARY
 FOR CONSTRUCTION