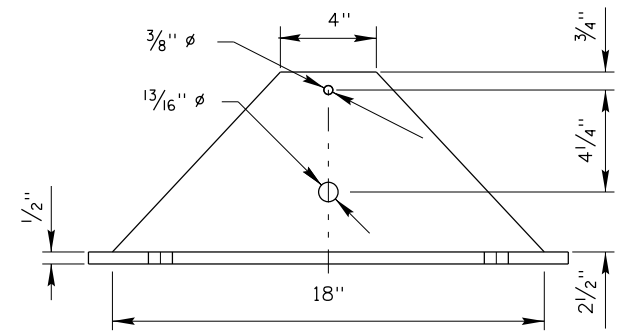
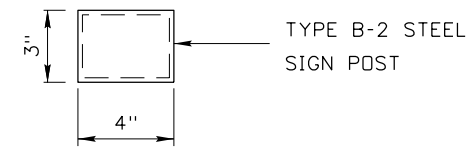
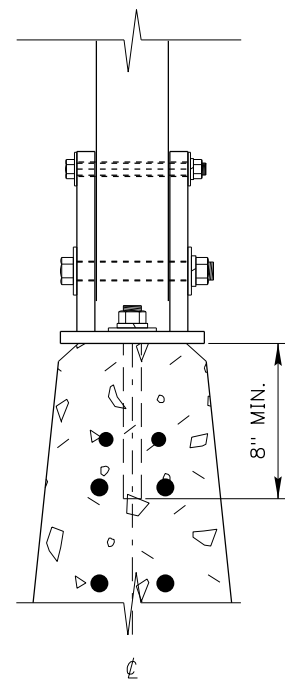


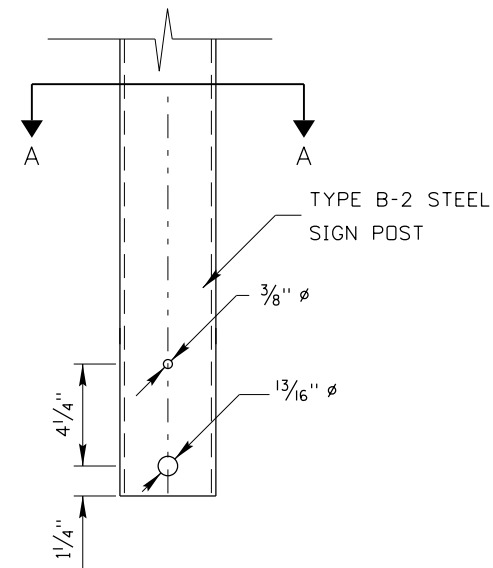
TOP VIEW



SIDE VIEW
PIVOT SIGN BASE



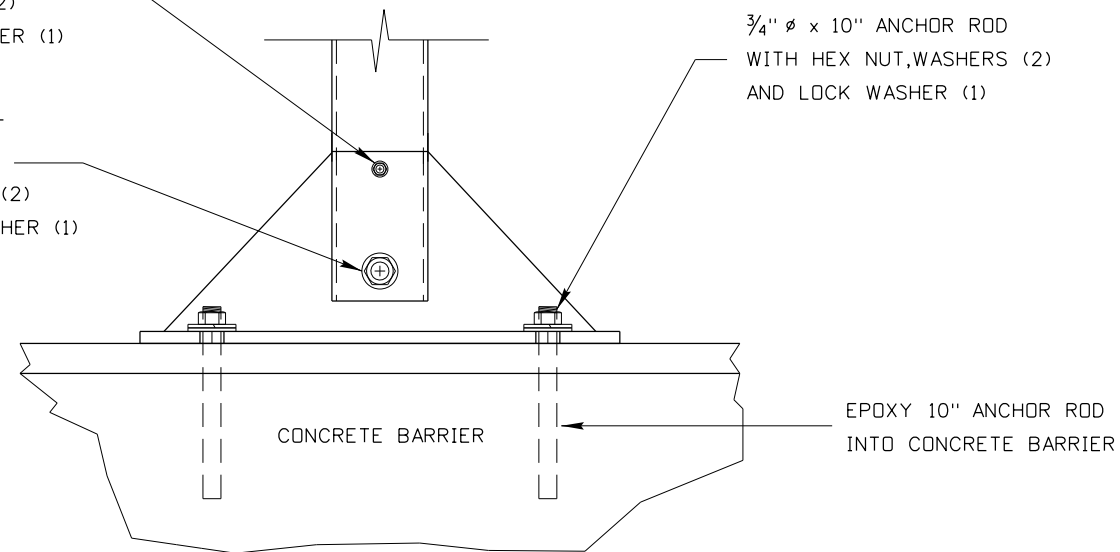
SECTION A-A



5/16" ϕ HEX BOLT
WITH HEX NUT
AND WASHERS (2)
AND LOCK WASHER (1)

3/4" ϕ HEX BOLT
WITH HEX NUT
AND WASHERS (2)
AND LOCK WASHER (1)

3/4" ϕ x 10" ANCHOR ROD
WITH HEX NUT, WASHERS (2)
AND LOCK WASHER (1)



NOTES:

1. USE A325 OR GRADE 5 HARDWARE TO ATTACH SIGN SIGN POST TO SIGN BASE.
2. USE AASHTO M270 GALVANIZED STEEL FOR PIVOT BASE.
3. PIVOT BASE WEIGHS APPROXIMATELY 52. LBS. WEIGHT DOES NOT INCLUDE GALVANIZING.
4. SEE STANDARD DRAWING I-9-A-1 AND STANDARD DRAWING I-9-A-2 FOR SIGN BRACE INFORMATION.
5. TYPE B-2 POST INFORMATION:
4" X 3" X 3/16" RECTANGULAR TUBE. THE WEIGHT IS 8.15 LBS/ FT. WEIGHT DOES NOT INCLUDE GALVANIZING.
6. PAY FOR THE PIVOT BASE AND HARDWARE UNDER ITEM 616-065A, BREAKAWAY STEEL SIGN POST INSTALLATION TYPE B.
7. DRAWING IS NOT TO SCALE

REVISIONS			
NO.	DATE	BY	DESCRIPTION

DESIGNED
DESIGN CHECKED
DETAILED
DRAWING CHECKED

SCALES SHOWN ARE FOR 11" X 17" PRINTS ONLY
CADD FILE NAME barrier sign post.dgn
DRAWING DATE:

**IDAHO
TRANSPORTATION
DEPARTMENT**

PROJECT NO.

TRAFFIC DETAIL
CONCRETE BARRIER SIGN POST INSTALLATION

English
COUNTY
KEY NUMBER
SHEET OF

NOT
APPROVED
PRELIMINARY
FOR
CONSTRUCTION