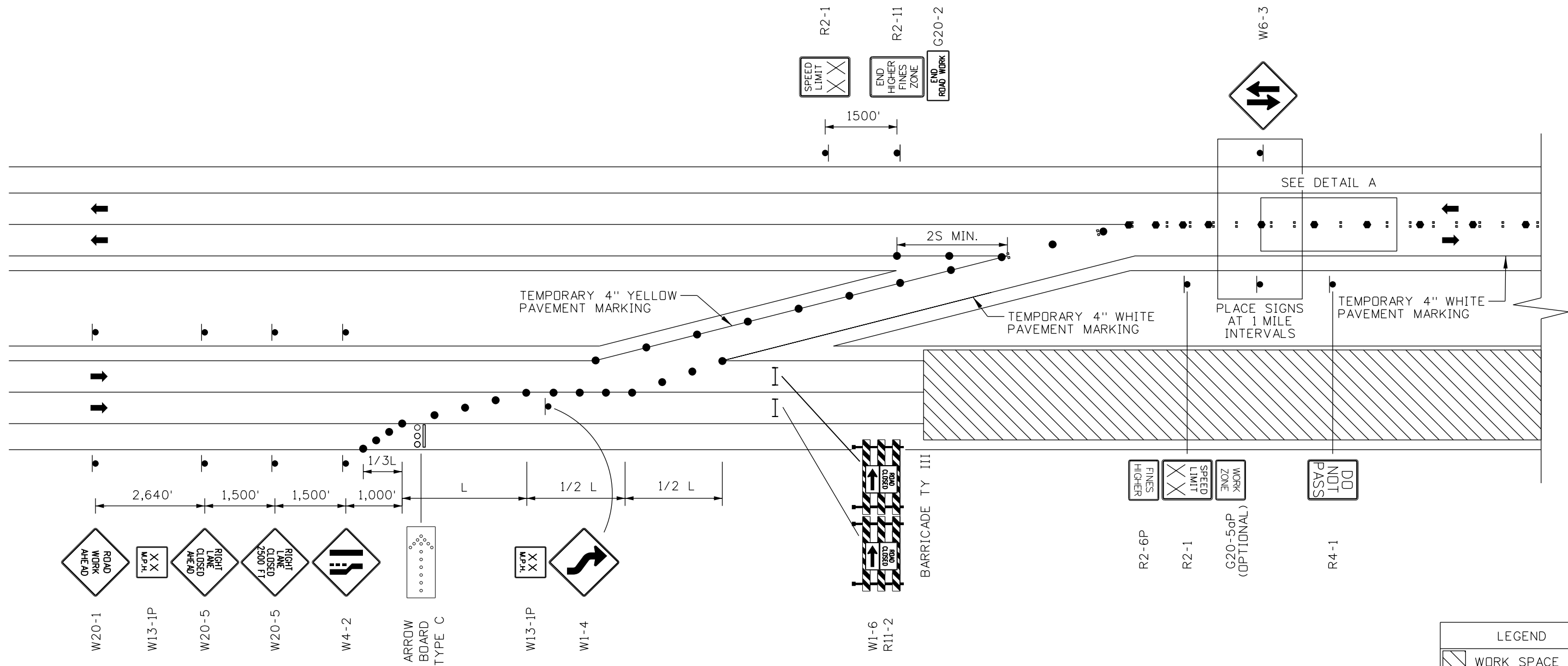


MEDIAN CROSSOVER ON A FREEWAY (1 of 2)

NOT TO SCALE



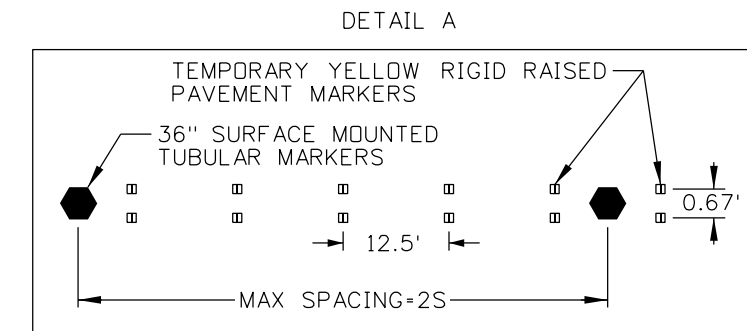
NOTES

1. SPACE CHANNELIZING DEVICES APPROXIMATELY 20' WHEN USED IN TAPERS, AND 2.0 TIMES THE SPEED LIMIT IN TANGENTS, OR AS INDICATED.
2. REMOVE CONFLICTING PAVEMENT MARKINGS IN LONG TERM STATIONARY SETUPS. LONG TERM STATIONARY IS OWRK THAT OCCUPIES A LOCATION MORE THAN 3 DAYS.
3. SEE NOTES PROVIDED FOR FIGURE 6H-39 (TA-39) IN MUTCD FOR ADDITIONAL INFORMATION.

TAPER FORMULA:

$$L = WS$$

L= TAPER LENGTH IN FEET
 W= WIDTH OF OFFSET IN FEET
 S= NORMAL SPEED LIMIT



LEGEND	
	WORK SPACE
	ARROW BOARD
	BARRICADE TY III
	DRUM
	SURFACE MOUNTED TUBULAR MARKER
	SIGN POST

REVISIONS			
NO.	DATE	BY	DESCRIPTION

DESIGNED	
DESIGN CHECKED	
DETAILED	
DRAWING CHECKED	
SCALES SHOWN ARE FOR 11" X 17" PRINTS ONLY	
CADD FILE NAME: TTC_Crossover1of2.DGN	
DRAWING DATE: SEPTEMBER 2020	

IDAHO TRANSPORTATION DEPARTMENT

PROJECT NO. _____

TEMPORARY TRAFFIC CONTROL
MEDIAN CROSSOVER ON A FREEWAY
1 OF 2

English

COUNTY _____

KEY NUMBER _____

SHEET _____ OF _____

NOT APPROVED
 PRELIMINARY
 FOR CONSTRUCTION