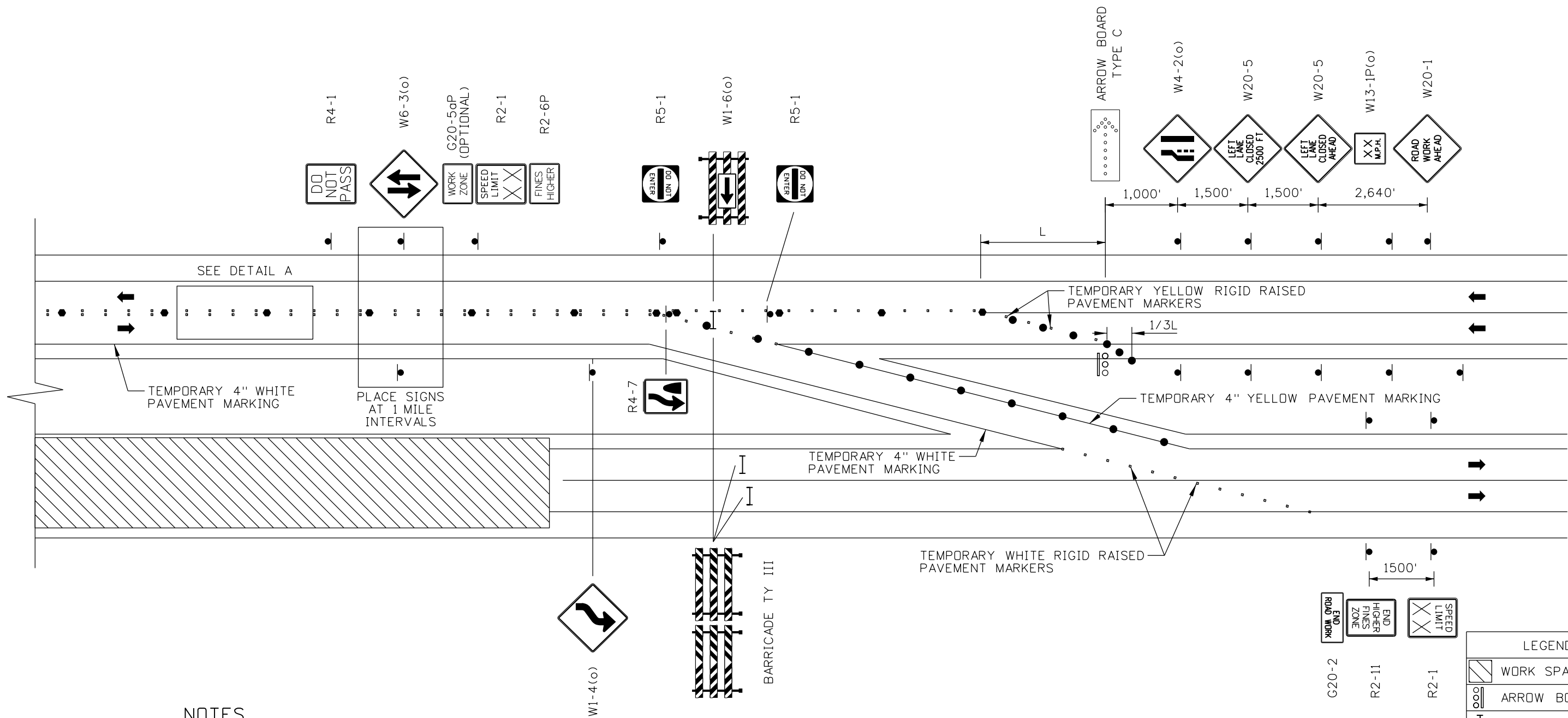


MEDIAN CROSSOVER ON A FREEWAY (2 of 2)

NOT TO SCALE



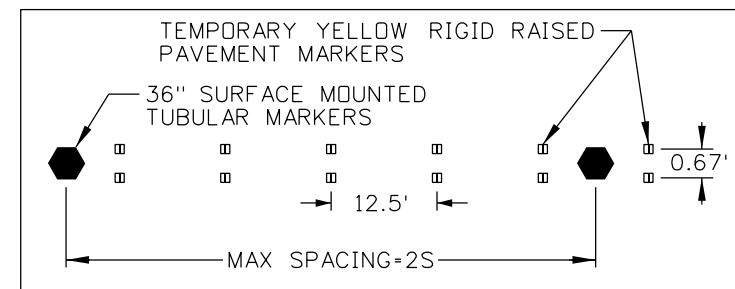
NOTES

1. SPACE CHANNELIZING DEVICES APPROXIMATELY 20' WHEN USED IN TAPERS, AND 2.0 TIMES THE SPEED LIMIT IN TANGENTS, OR AS INDICATED.
2. REMOVE CONFLICTING PAVEMENT MARKINGS IN LONG TERM STATIONARY SETUPS. LONG TERM STATIONARY IS OWRK THAT OCCUPIES A LOCATION MORE THAN 3 DAYS.
3. SEE NOTES PROVIDED FOR FIGURE 6H-39 (TA-39) IN MUTCD FOR ADDITIONAL INFORMATION.

TAPER FORMULA:

$$L = WS$$

L= TAPER LENGTH IN FEET
 W= WIDTH OF OFFSET IN FEET
 S= POSTED SPEED LIMIT



| LEGEND | |
|--------|--------------------------------|
| | WORK SPACE |
| | ARROW BOARD |
| | BARRICADE TY III |
| | DRUM |
| | SURFACE MOUNTED TUBULAR MARKER |
| | SIGN POST |

| REVISIONS | | | | DESIGNED | SCALES SHOWN ARE FOR 11" X 17" PRINTS ONLY |
|-----------|------|----|-------------|-----------------|--|
| NO. | DATE | BY | DESCRIPTION | DESIGN CHECKED | |
| | | | | DETAILED | |
| | | | | DRAWING CHECKED | |

IDAHO TRANSPORTATION DEPARTMENT

| | |
|-------------|---|
| PROJECT NO. | TEMPORARY TRAFFIC CONTROL |
| | MEDIAN CROSSOVER ON A FREEWAY 2 OF 2 |

| | |
|----------------|----|
| English | |
| COUNTY | |
| KEY NUMBER | |
| SHEET | OF |

NOT APPROVED
 PRELIMINARY
 FOR CONSTRUCTION