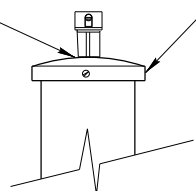


DRILL POLE CAP TO ACCEPT PHOTOELECTRIC CONTROL LOCKING TYPE RECEPTACLE (SIGNAL POLES ONLY)

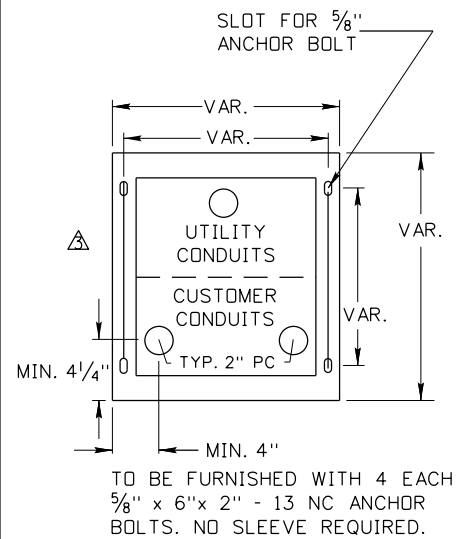
ILLUMINATION POLES USE POLE TOP ADAPTER FOR THIS LOCATION



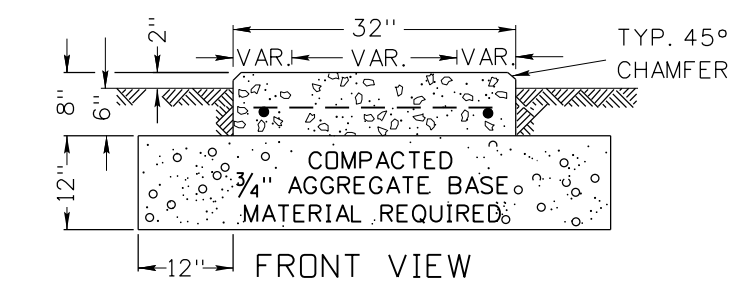
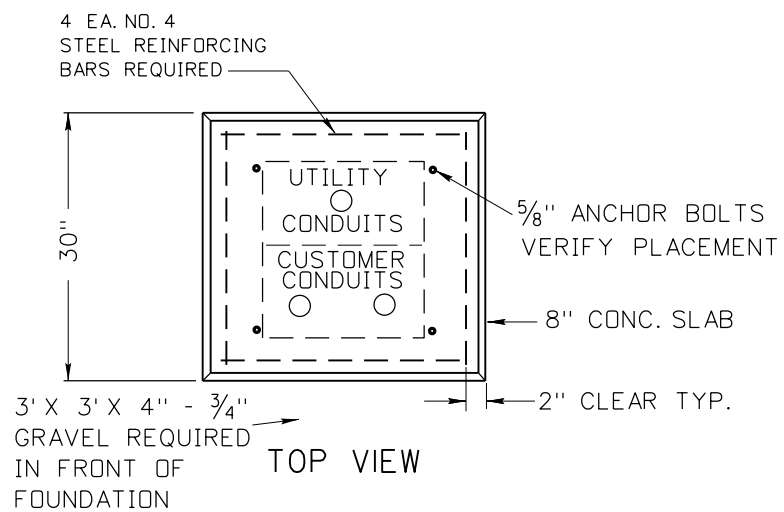
ALTERNATE LOCATION

POLE TOP MOUNTING FOR PHOTOELECTRIC CELL

Photoelectric cell twist lock receptacle required. Mounted in upper right side of customer section.

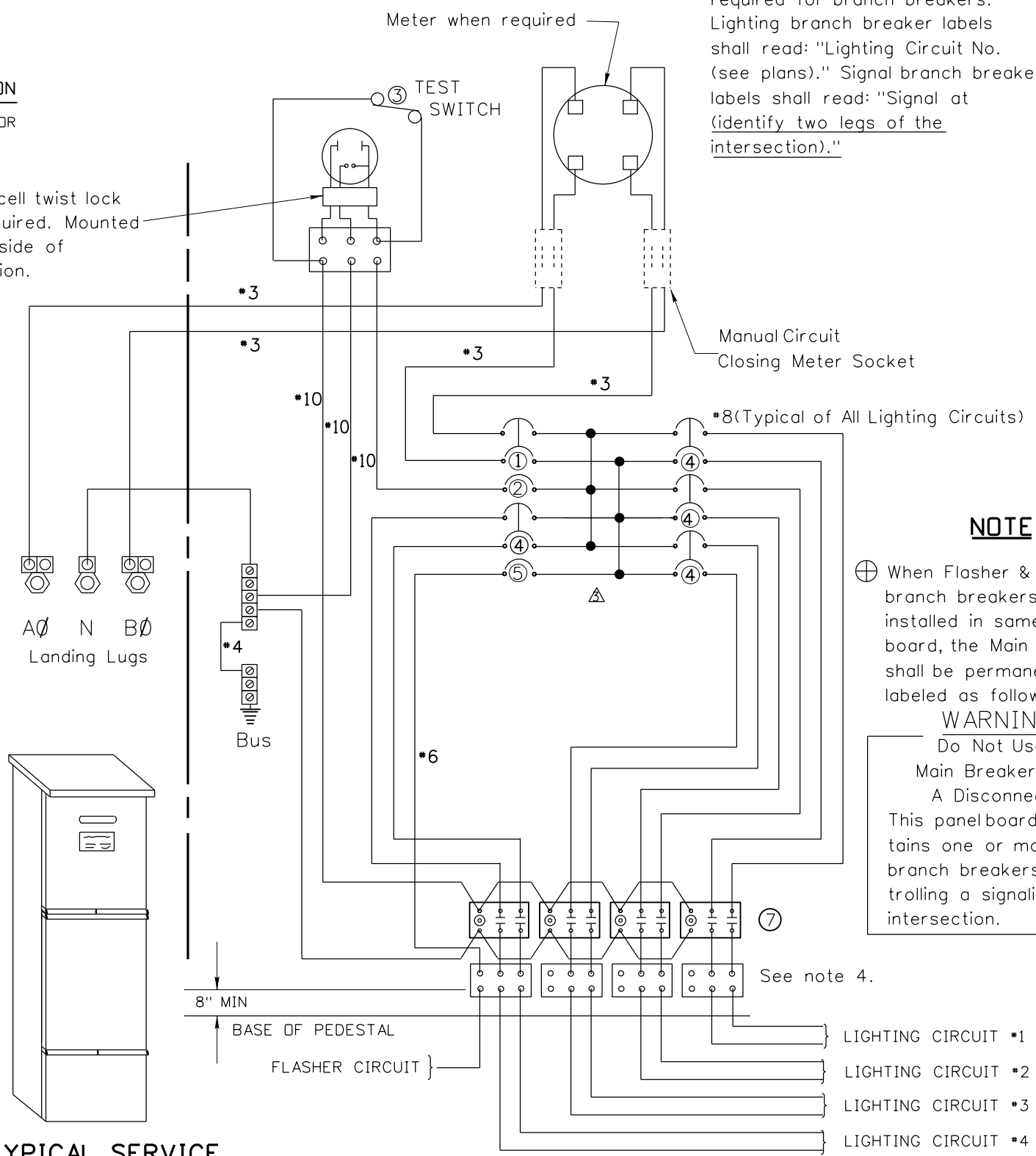


PEDESTAL FLANGE MOUNTING DETAIL



NARROW FOUNDATION

TYPICAL SERVICE PEDESTAL



NOTE

Identification labels shall be required for branch breakers. Lighting branch breaker labels shall read: "Lighting Circuit No. (see plans)." Signal branch breaker labels shall read: "Signal at (identify two legs of the intersection)."

NOTE

When Flasher & Lighting branch breakers are installed in same panel board, the Main Breaker shall be permanently labeled as follows:

WARNING

Do Not Use Main Breaker As A Disconnect

This panelboard contains one or more branch breakers controlling a signalized intersection.

SERVICE CABINET SCHEDULE

ITEM	CLASS "B"
① MAIN BREAKER	(SEE SCHEDULE)
② CONTROL BREAKER	1P-15A 120/240 VOLT
③ TEST SWITCH	SPST-15A 120/240 VOLT
④ LIGHTING BRANCH BREAKER	2P-120/240 VOLT (SEE SCHEDULE)
⑤ SIGNAL CONTROL BREAKER	
⑥ DRY TRANSFORMER	NONE
⑦ LIGHTING CONTACTOR	8P (ANY COMBINATION)
⑧ FLASHER CONTROL BREAKER	

BREAKER RATING SCHEDULE

CLASS "B"	
ITEM	NO. OF LIGHTING CIRCUITS
MAIN BREAKER	100 AMP 2P
LIGHTING BRANCH BREAKER	30 AMP 2P
SIGNAL CONTROL BREAKER	
LIGHTING CONTACTOR	30 AMP 8P
SERVICE WIRE	NO. 3 THWN

NOTES:

- SERVICE CABINETS SHALL BE NEMA TYPE 3R. TO BE FURNISHED WITH A PADLOCK HASP.
- DEAD FRONT CONSTRUCTION IS REQUIRED ON ALL CABINETS.
- PLUG-IN TYPE BREAKERS SHALL BE USED ON "B" SERVICES. MAIN BREAKERS SHALL BE BOLT RETAINED.
- PRESSURE TYPE TERMINALS SHALL BE REQUIRED FOR *8 THROUGH *2 AWG. WIRE.
- ALL SERVICES SHALL BE U.L. LABELED FOR MAXIMUM 100 AMP BUS RATING, AND "APPROVED FOR SERVICE ENTRANCE EQUIPMENT." THE MAIN BREAKER LABEL SHALL BE MADE OF RED ON WHITE PLASTIC LAMINATE. THE BRANCH BREAKER LABELS SHALL BE MADE OF BLACK ON WHITE PLASTIC LAMINATE. THE LEGENDS SHALL BE ENGRAVED INTO THE STRIP SO AS TO PROVIDE WHITE LEGEND ON THE REQUIRED BACKGROUND. THE LABELS SHALL BE PERMANENTLY ATTACHED TO THE DEAD FRONT, NEXT TO THE CORRESPONDING BREAKERS.
- LIGHTING CONTACTORS, LIGHTING & SIGNALIZATION CIRCUIT BREAKERS TO BE FACTORY INSTALLED.
- ADDITIONAL CIRCUIT BREAKERS, BRANCH CIRCUIT WIRE, AND PHOTOELECTRIC CONTROL TO BE SUPPLIED BY THE CONTRACTOR.
- ALL BUSSING TO BE 100 AMP RATED.
- WIRING SHALL BE THWN/MTW 600V 90 C RATED.

TYPE 1 SERVICE

REVISIONS			
NO.	DATE	BY	DESCRIPTION
1	09-07	NQB	REVISED TEXT AND BORDER SHEET
1	01-09	NQB	ADD VAR. TO FLANGE & FOUNDATION

DESIGNED	SCALES SHOWN ARE FOR 11" X 17" PRINTS ONLY
DESIGN CHECKED	
DETAILED	CADD FILE NAME td03mod_0109.dgn
DRAWING CHECKED	DRAWING DATE: AUGUST, 2007

IDAHO TRANSPORTATION DEPARTMENT

PROJECT NO. td-03mod

120/240 ILLUMINATION ELECTRICAL SERVICE PEDESTAL PAD MOUNTED

English

COUNTY

KEY NUMBER

SHEET OF

NOT APPROVED
PRELIMINARY
FOR CONSTRUCTION