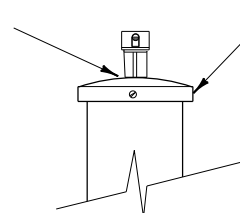


DRILL POLE CAP TO ACCEPT PHOTOELECTRIC CONTROL LOCKING TYPE RECEPTACLE (SIGNAL POLES ONLY)

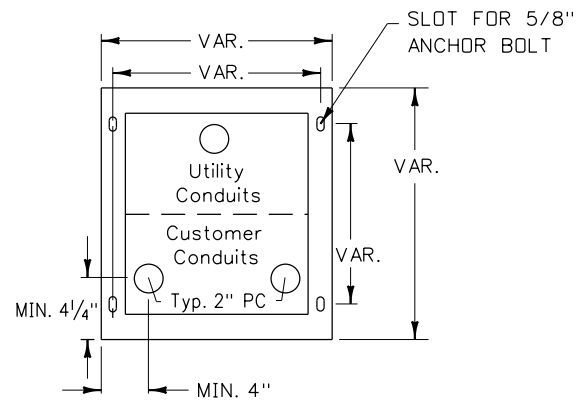


ILLUMINATION POLES USE POLE TOP ADAPTER FOR THIS LOCATION

ALTERNATE LOCATION

POLE TOP MOUNTING FOR PHOTOELECTRIC CELL

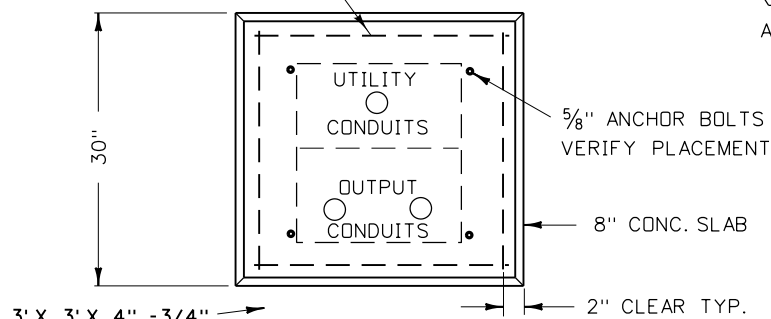
PHOTOELECTRIC CELL TWIST LOCK RECEPTACLE REQUIRED. MOUNT IN UPPER RIGHT SIDE OF CUSTOMER SECTION.



TO BE FURNISHED WITH 4 EACH 5/8" x 6" x 2" - 13 NC ANCHOR BOLTS. NO SLEEVE REQUIRED

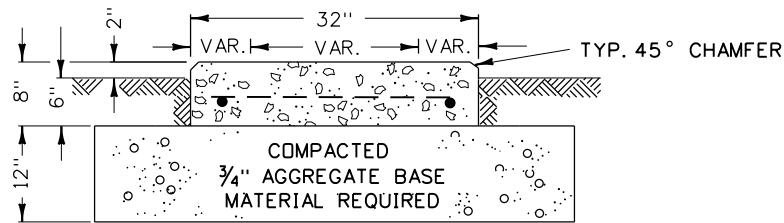
PEDESTAL FLANGE MOUNTING DETAIL

4 EA. NO. 4 STEEL REINFORCED BARS REQUIRED



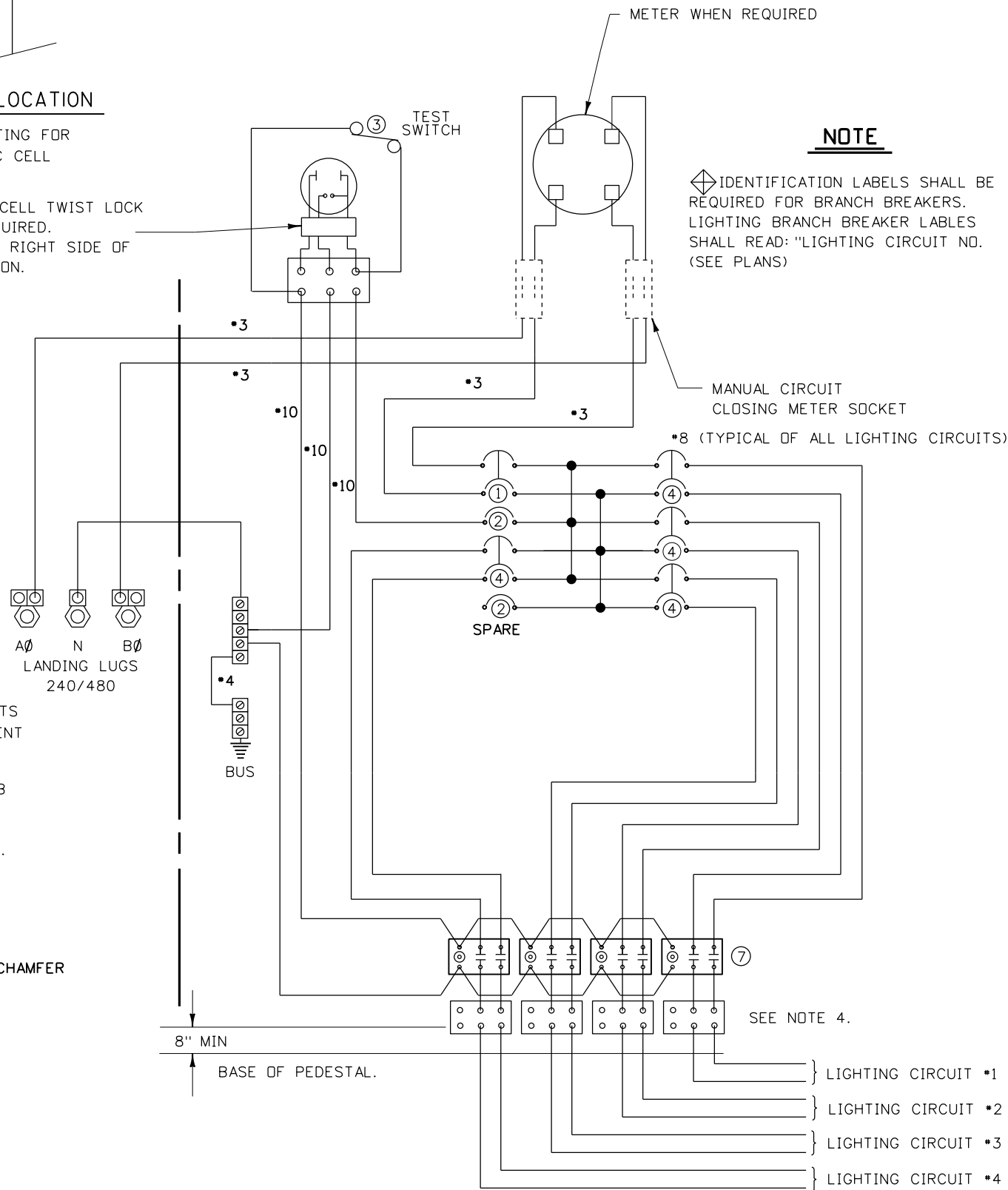
TOP VIEW

3' X 3' X 4" - 3/4" GRAVEL REQUIRED IN FRONT OF FOUNDATION



FRONT VIEW

NARROW FOUNDATION



NOTE

IDENTIFICATION LABELS SHALL BE REQUIRED FOR BRANCH BREAKERS. LIGHTING BRANCH BREAKER LABELS SHALL READ: "LIGHTING CIRCUIT NO. (SEE PLANS)"

SHOW UNUSED LIGHTING CIRCUITS AS DASHED LINES AND LABEL AS "SPARE"

SERVICE CABINET SCHEDULE

ITEM	CLASS "C"
① MAIN BREAKER	(SEE SCHEDULE)
② CONTROL BREAKER	1P-15A 480 VOLT
③ TEST SWITCH	SPST-15A 480 VOLT
④ LIGHTING BRANCH BREAKER	2P-480 VOLT (SEE SCHEDULE)
⑤ SIGNAL CONTROL BREAKER	
⑥ DRY TRANSFORMER	NONE
⑦ LIGHTING CONTACTOR	8P (ANY COMBINATION)
⑧ FLASHER CONTROL BREAKER	

BREAKER RATING SCHEDULE

CLASS "C"	
ITEM	NO. OF LIGHTING CIRCUITS
MAIN BREAKER	100 AMP 2P
LIGHTING BRANCH BREAKER	30 AMP 2P
SIGNAL CONTROL BREAKER	
LIGHTING CONTACTOR	30 AMP 8P
SERVICE WIRE	NO.3 THWN

NOTES:

- SERVICE CABINETS SHALL BE NEMA TYPE 3R TO BE FURNISHED WITH A PADLOCK HASP.
- DEAD FRONT CONSTRUCTION IS REQUIRED ON ALL CABINETS.
- PLUG-IN BREAKERS SHALL BE USED ON "B" SERVICES. MAIN BREAKERS SHALL BE BOLT RETAINED.
- PRESSURE TERMINALS SHALL BE REQUIRED FOR #8 THROUGH #2 AWG WIRE.
- ALL SERVICES SHALL BE UL LABELED FOR MAXIMUM 100 AMP BUS RATING, AND APPROVED FOR SERVICE ENTRANCE EQUIPMENT.
- THE MAIN BREAKER LABEL SHALL BE MADE OF RED ON WHITE PLASTIC LAMINATE. THE BRANCH BREAKER LABELS SHALL BE MADE OF BLACK ON WHITE PLASTIC LAMINATE. THE LEGENDS SHALL BE ENGRAVED INTO THE STRIP SO AS TO PROVIDE RED OR BLACK LEGEND ON THE REQUIRED BACKGROUND. THE LABELS SHALL BE PERMANENTLY ATTACHED TO THE DEAD FRONT, NEXT TO THE CORRESPONDING BREAKERS.
- LIGHTING CONTACTORS, LIGHTING & SIGNAL BRANCH CIRCUIT BREAKERS ARE FACTORY INSTALLED
- BRANCH CIRCUIT WIRE AND PHOTOELECTRIC CONTROL TO BE SUPPLIED BY THE CONTRACTOR
- ALL BUSSING TO BE 100 AMP RATED.
- WIRING SHALL BE THWN/MTW 600V 90°C RATED.

TYPE I SERVICE

REVISIONS			
NO.	DATE	BY	DESCRIPTION
1	09-07	NQB	REVISED TEXT AND BORDER SHEET
2	01-09	NQB	ADD VAR. TO FLANGE & FOUNDATION

DESIGNED	SCALES SHOWN ARE FOR 11" X 17" PRINTS ONLY
DESIGN CHECKED	
DETAILED	CADD FILE NAME td06_0109.dgn
DRAWING CHECKED	DRAWING DATE: JUNE, 1993

IDAHO TRANSPORTATION DEPARTMENT

PROJECT NO.	td-06
-------------	-------

240/480 ILLUMINATION & ELECTRICAL SERVICE PEDESTAL PAD MOUNTED

English	COUNTY
	KEY NUMBER
	SHEET OF

NOT APPROVED
PRELIMINARY
FOR CONSTRUCTION