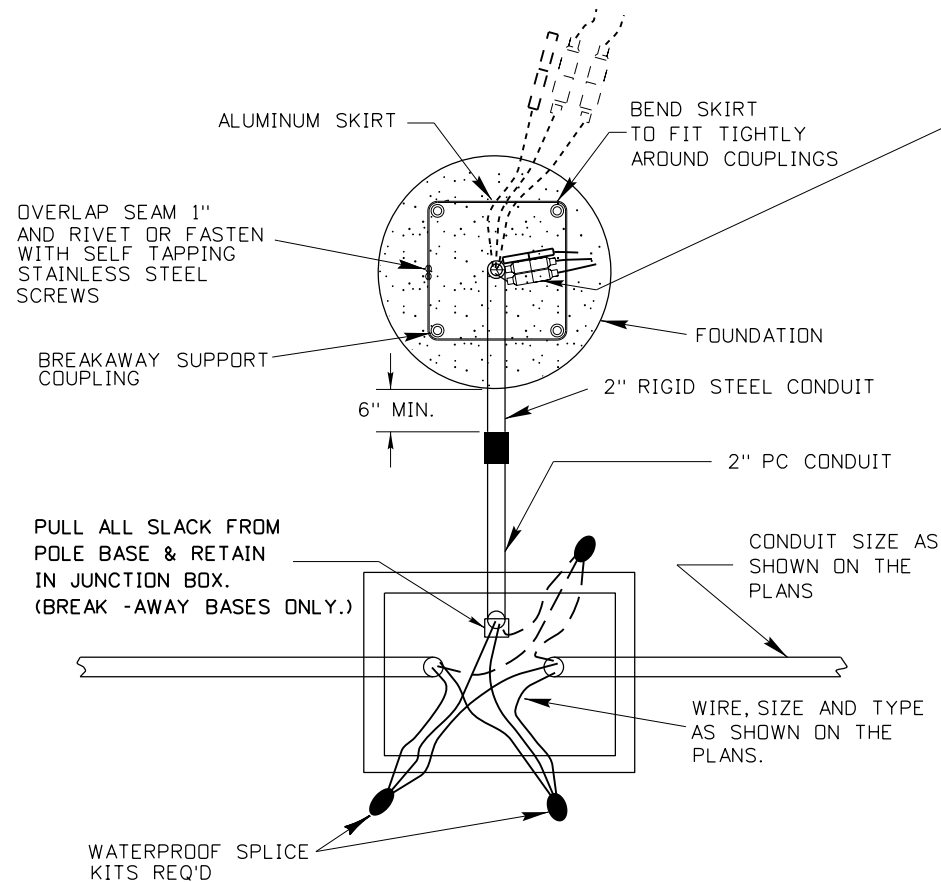


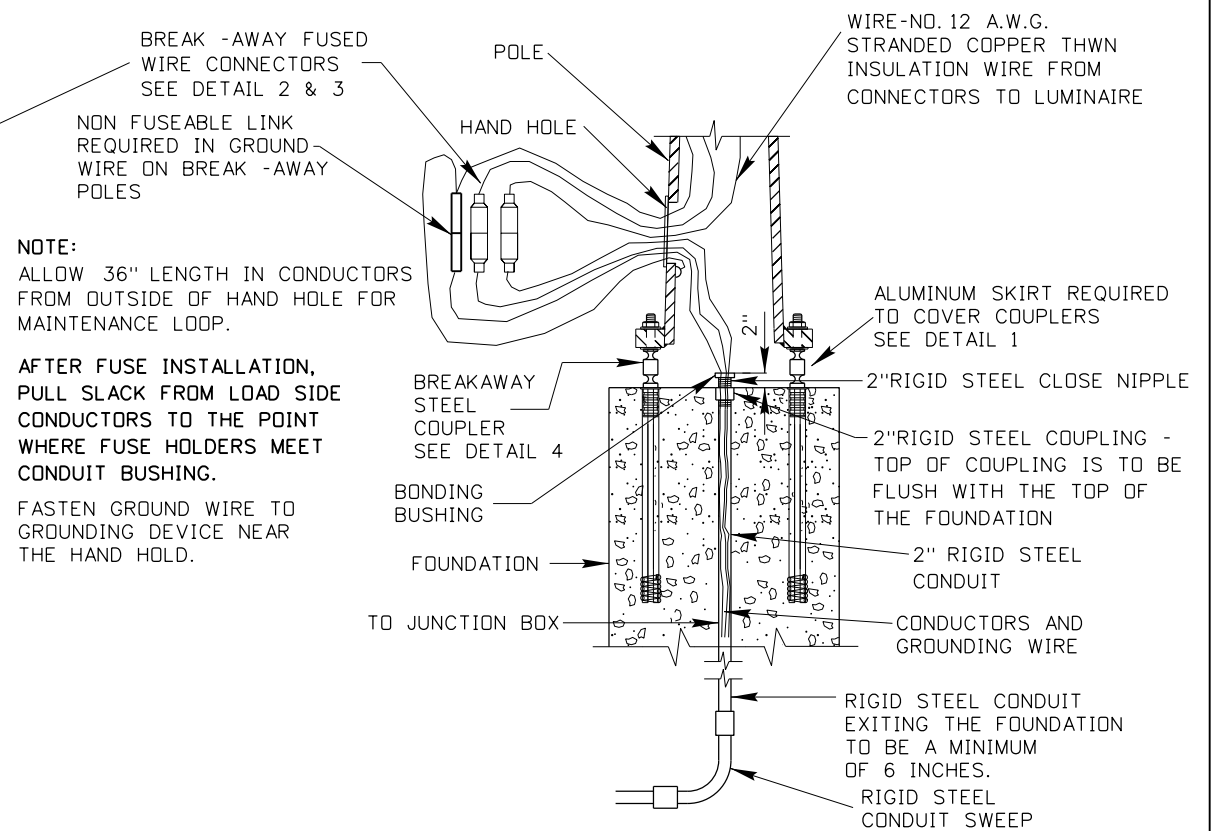
CURB AND GUTTER SECTION
SHOULDER SECTION
TYPICAL LIGHT POLE INSTALLATION

-CONDUIT BENDS-
CONDUIT SHALL BE BENT SO THAT THE CONDUIT WILL NOT BE DAMAGED, AND THAT THE INTERNAL DIAMETER OF THE CONDUIT WILL NOT BE EFFECTIVELY REDUCED. THE RADIUS OF THE CURVE OF THE INNER EDGE OF ANY FIELD BEND SHALL NOT BE LESS THAN SHOWN BELOW. ELBOWS, RISERS AND ALL BENDS GREATER THAN 45° SHALL BE RIGID STEEL.

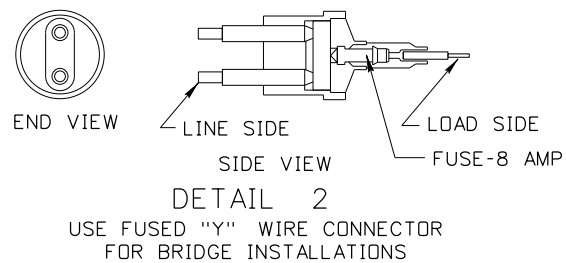
SIZE OF CONDUIT	MINIMUM RADIUS
	FIELD BENDS
1"	6"
1 1/4"	8"
1 1/2"	10"
2"	12"
2 1/2"	15"
3"	18"
3 1/2"	21"
4"	24"



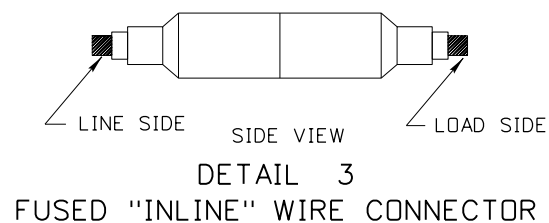
DETAIL 1
TYPICAL JUNCTION BOX INSTALLATION



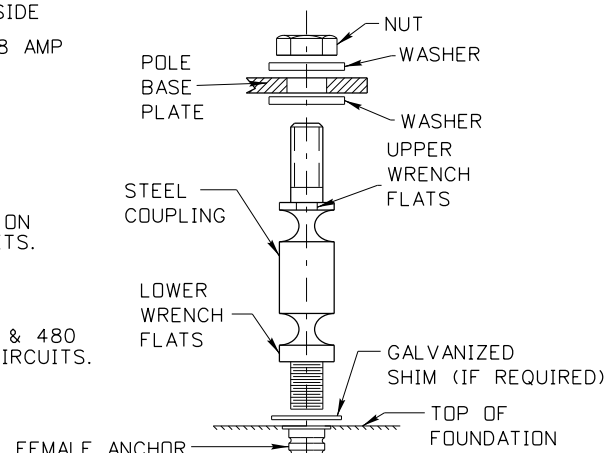
BREAKAWAY STEEL COUPLER
INLINE TYPE CONNECTOR INSTALLATION
WITH JUNCTION BOX



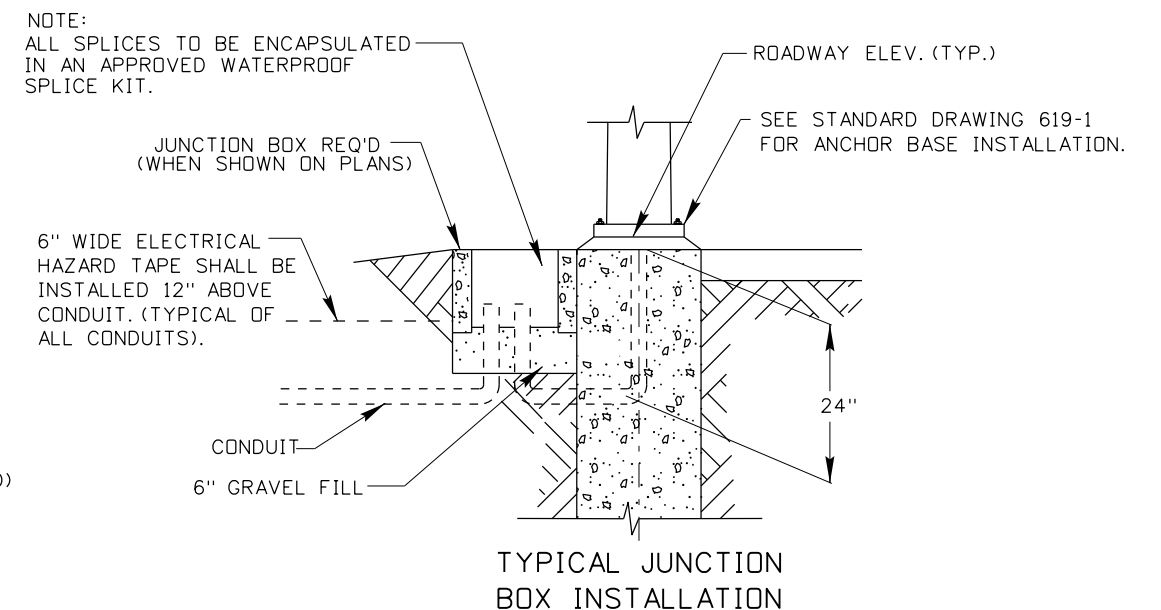
NOTE - NON-FUSED WIRE CONNECTORS REQUIRED ON NEUTRAL OF 120 & 480 VOLT TO GROUND CIRCUITS.
NON FUSEABLE LINK REQUIRED ON GROUNDING CONDUCTORS OF ALL BREAKAWAY INSTALLATIONS.
FUSED WIRE CONNECTORS REQUIRED ON 120, 240 & 480 VOLT PHASE TO PHASE AND PHASE TO GROUND CIRCUITS.



DETAIL 3
FUSED "INLINE" WIRE CONNECTOR



DETAIL 4
TYPICAL BREAKAWAY STEEL
COUPLER INSTALLATION



TYPICAL JUNCTION
BOX INSTALLATION

REVISIONS			
NO.	DATE	BY	DESCRIPTION
1	02-13	HEB	REMOVED "BY APPROVED METHOD"
2	02-14	HEB	ADDED THE 2" CLOSE NIPPLE AND 2" COUPLING
3	07-16	HEB	REVISED A NOTE.

DESIGNED	SCALES SHOWN ARE FOR 11" X 17" PRINTS ONLY
DESIGN CHECKED	CADD FILE NAME td10_0716.dgn
DETAILED	DRAWING DATE: MAY, 1997
DRAWING CHECKED	

IDAHO TRANSPORTATION DEPARTMENT

PROJECT NO. td-10

DETAILS FOR HIGHWAY LIGHTING
30', 40', & 50' MOUNTING HEIGHT
BREAKAWAY INSTALLATIONS

English
COUNTY
KEY NUMBER
SHEET OF

NOT APPROVED
PRELIMINARY
FOR CONSTRUCTION