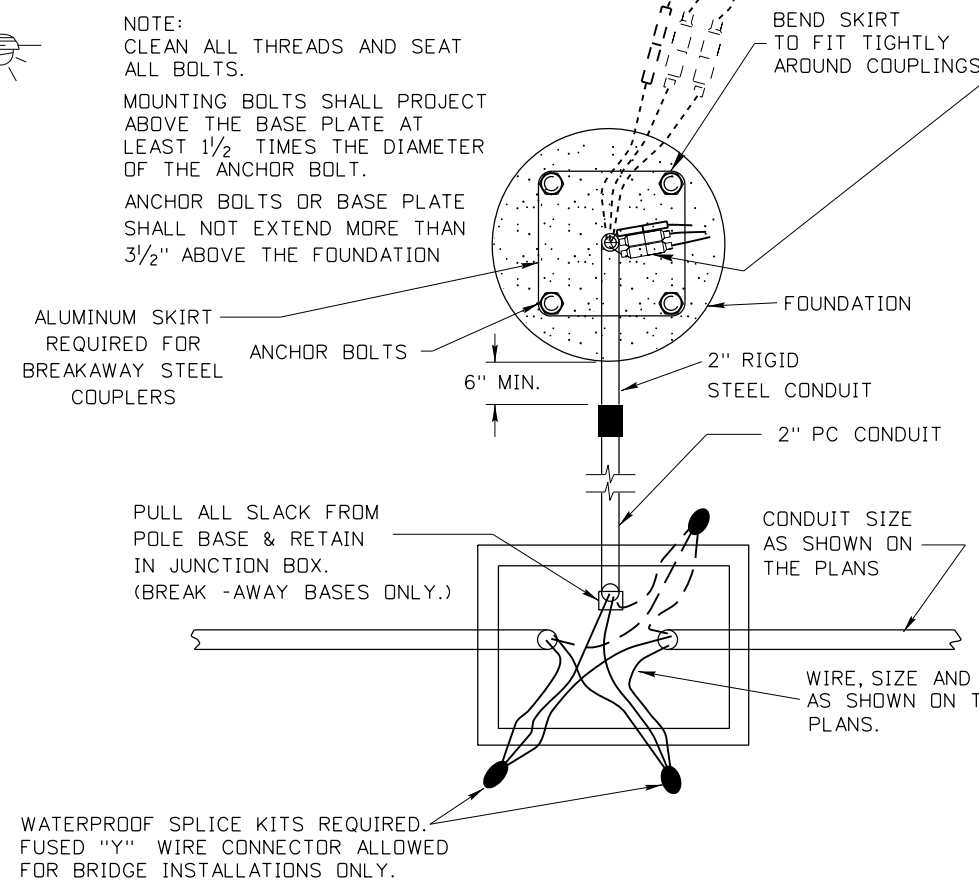
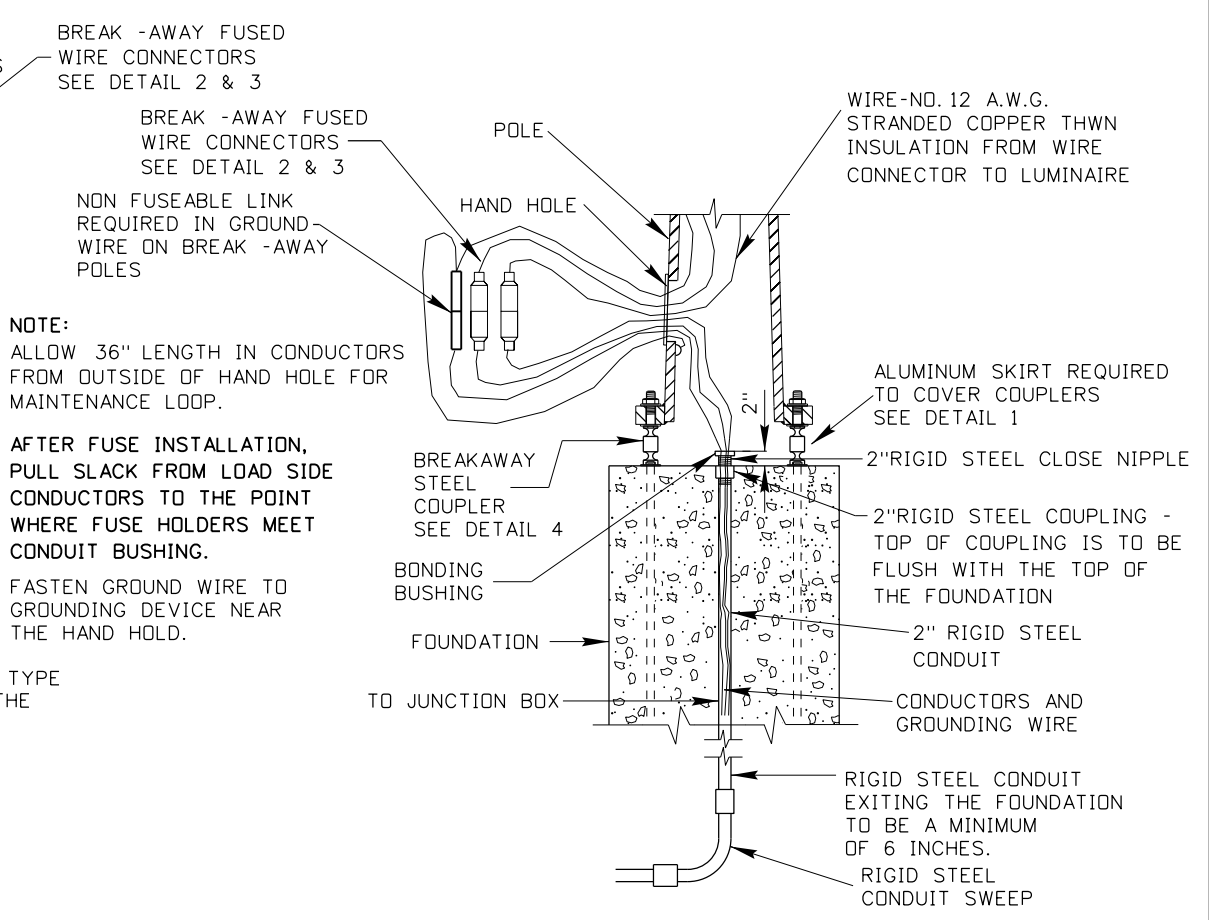


TYPICAL LIGHT POLE INSTALLATION



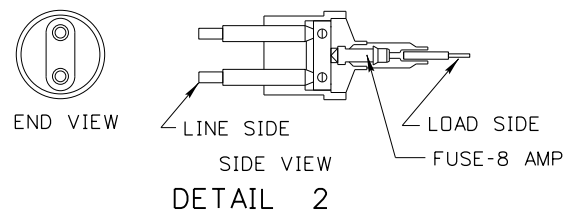
DETAIL 1  
TYPICAL JUNCTION BOX INSTALLATION



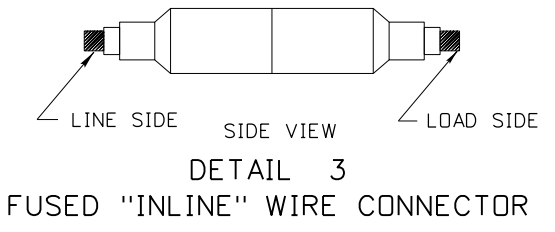
BREAKAWAY STEEL COUPLER  
INLINE TYPE CONNECTOR INSTALLATION  
WITH JUNCTION BOX

**-CONDUIT BENDS-**  
CONDUIT SHALL BE BENT SO THAT THE CONDUIT WILL NOT BE DAMAGED, AND THAT THE INTERNAL DIAMETER OF THE CONDUIT WILL NOT BE EFFECTIVELY REDUCED. THE RADIUS OF THE CURVE OF THE INNER EDGE OF ANY FIELD BEND SHALL NOT BE LESS THAN SHOWN BELOW. ELBOWS, RISERS AND ALL BENDS GREATER THAN 45° SHALL BE RIGID STEEL.

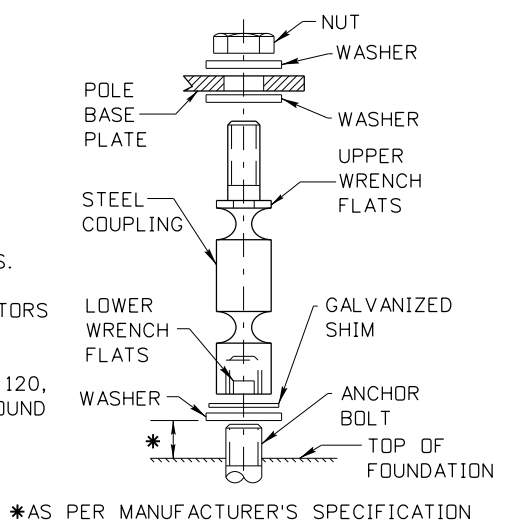
SIZE OF CONDUIT	MINIMUM RADIUS
	FIELD BENDS
1"	6"
1 1/4"	8"
1 1/2"	10"
2"	12"
2 1/2"	15"
3"	18"
3 1/2"	21"
4"	24"



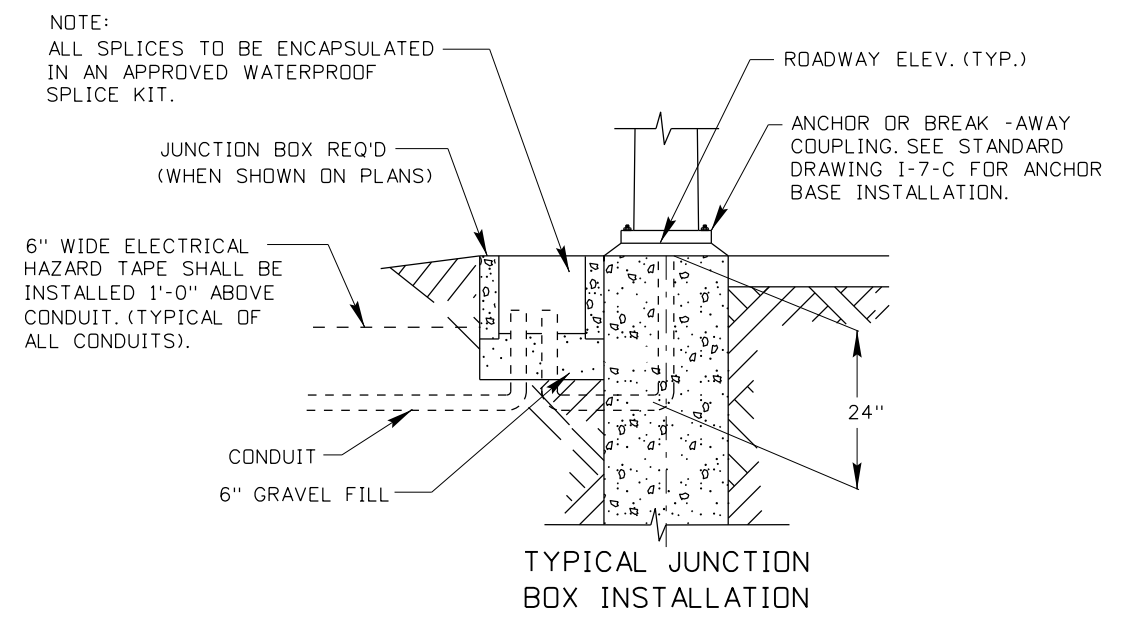
NOTE - NON-FUSED WIRE CONNECTORS REQUIRED ON NEUTRAL OF 120 & 480 VOLT TO GROUND CIRCUITS.  
NON FUSEABLE LINK REQUIRED ON GROUNDING CONDUCTORS OF ALL BREAKAWAY INSTALLATIONS.  
BREAK -AWAY FUSED WIRE CONNECTORS REQUIRED ON 120, 240 & 480 VOLT PHASE TO PHASE AND PHASE TO GROUND CIRCUITS.



DETAIL 3  
FUSED "INLINE" WIRE CONNECTOR



DETAIL 4  
TYPICAL BREAKAWAY STEEL  
COUPLER INSTALLATION



TYPICAL JUNCTION  
BOX INSTALLATION

REVISIONS			
NO.	DATE	BY	DESCRIPTION
1	01-12	HEB	CHANGED 1 1/2" RSC TO 2" RSC
2	06-12	HEB	ADDED THE 2" CONDUIT HEIGH ABOVE THE FOUNDATION
3	02-14	HEB	ADDED THE 2" CLOSE NIPPLE AND 2" COUPLING

DESIGNED  
DESIGN CHECKED  
DETAILED  
DRAWING CHECKED

SCALES SHOWN ARE FOR 11" X 17" PRINTS ONLY  
CADD FILE NAME td17\_0214.dgn  
DRAWING DATE: FEBRUARY, 2000

**IDAHO TRANSPORTATION DEPARTMENT**  
DISTRICT NINE TRAFFIC

PROJECT NO. td-17

**DETAILS FOR HIGHWAY LIGHTING 30', 40' & 50' MOUNTING HEIGHT BREAKAWAY INSTALLATIONS (MODEL 4100 ONLY)**

**English**  
COUNTY  
KEY NUMBER  
SHEET OF

NOT APPROVED  
PRELIMINARY  
FOR CONSTRUCTION