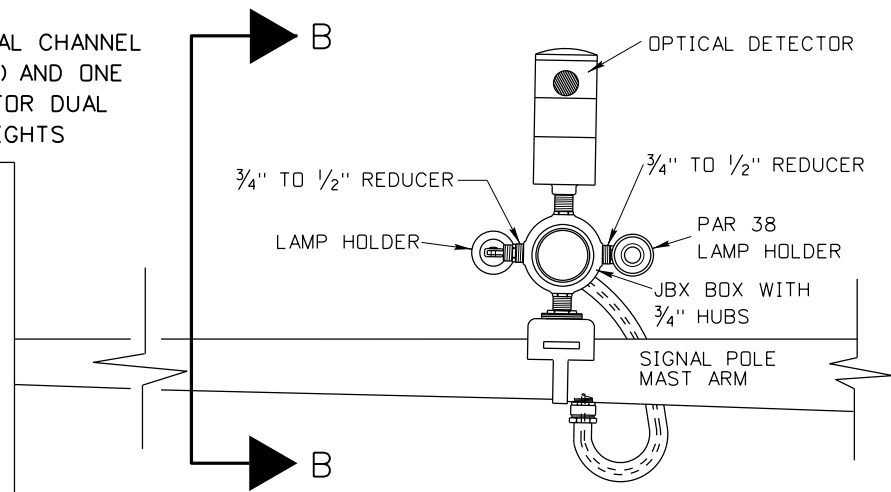
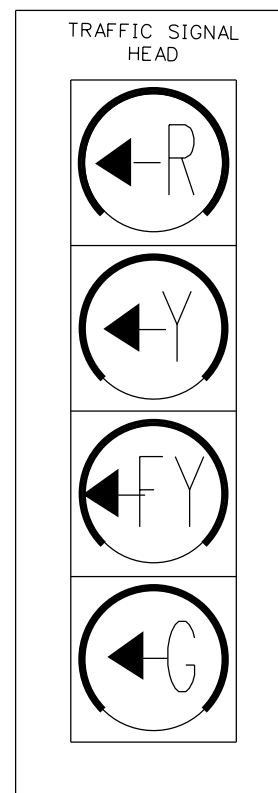


EMERGENCY VEHICLE DETECTOR
AND MOUNTING ASSEMBLY
VIEW B-B

USE ONE M-138 CABLE FOR DUAL CHANNEL
OPTICAL DETECTOR (GTT 722) AND ONE
IMSA 3 CONDUCTOR CABLE FOR DUAL
CALL BACK INDICATOR LIGHTS



REVISIONS			
NO.	DATE	BY	DESCRIPTION
1	02-11	HEB	4 SECTION HEAD & CORRECTED LEVELS

DESIGNED
DESIGN CHECKED
DETAILED
DRAWING CHECKED

SCALES SHOWN ARE FOR 11" X 17" PRINTS ONLY
CADD FILE NAME td32a_0912.dgn
DRAWING DATE:

**IDAHO
TRANSPORTATION
DEPARTMENT**

DISTRICT XXXX TRAFFIC

PROJECT NO.

td32a
DUAL CHANNEL DETECTOR AND CALL BACK LIGHT

English
COUNTY
KEY NUMBER
SHEET OF

NOT APPROVED
PRELIMINARY
FOR CONSTRUCTION