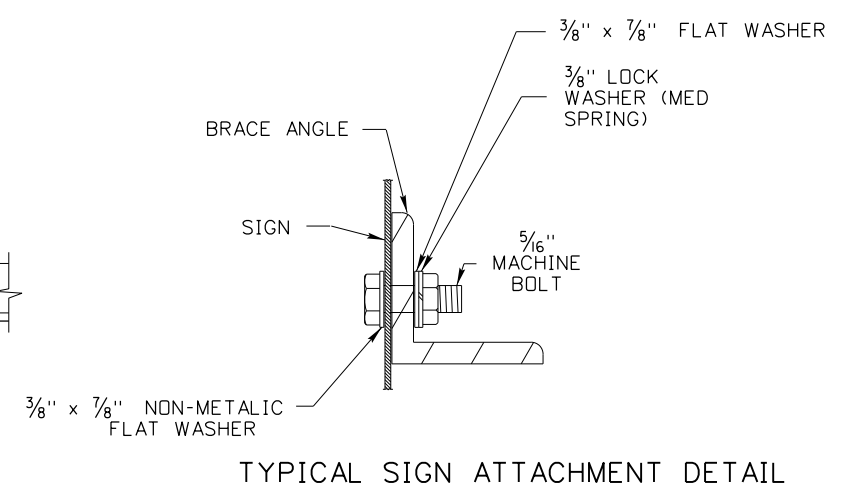
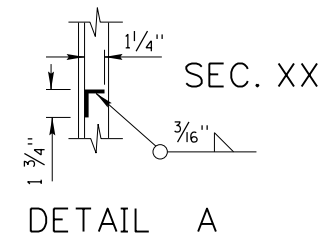
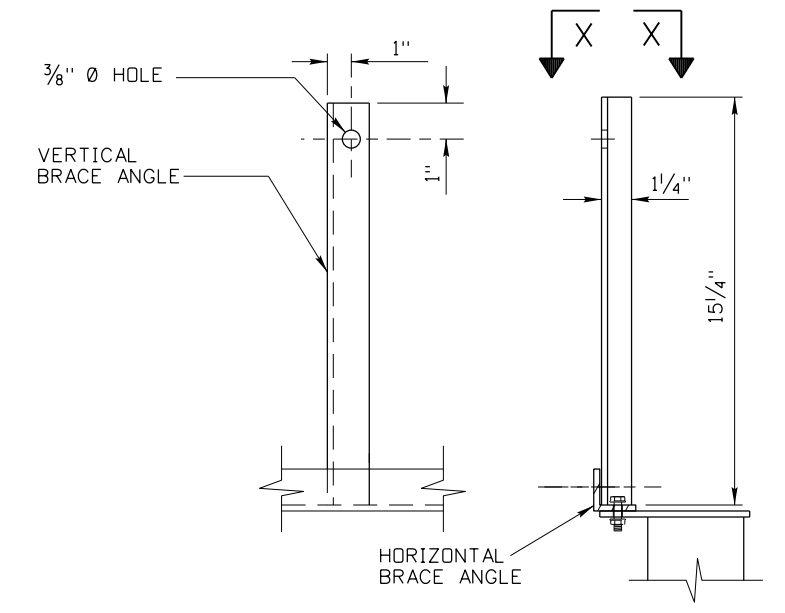


- NOTES:
1. WEIGHTS OF BRACE ANGLES DO NOT INCLUDE GALVANIZING.
  2. ALL BRACE ANGLES SHALL BE 1 3/4" X 1 3/4" X 1/4" AT 2.77 LBS./FT. WITH THE EXCEPTION OF THE VERTICAL BRACE ANGLE WHICH SHALL BE 1 3/4" X 1 1/4" AT 2.34 LBS/FT.
  3. STANDARD DRAWING I-8-D-2 & STANDARD DRAWING I-8-D-3 MUST ACCOMPANY THIS SHEET.



REVISIONS			
NO.	DATE	BY	DESCRIPTION

DESIGNED	SCALES SHOWN ARE FOR 11" X 17" PRINTS ONLY CADD FILE NAME: td60_0507.dgn DRAWING DATE: AUGUST, 1994
DESIGN CHECKED	
DRAWING CHECKED	

**IDAHO TRANSPORTATION DEPARTMENT**

DISTRICT NINE TRAFFIC

PROJECT NO. \_\_\_\_\_

FOUR CARDINAL ROUTE MARKER ASSEMBLY

**CARDINAL ROUTE MARKER ASSEMBLY**

**English**

COUNTY \_\_\_\_\_

KEY NUMBER \_\_\_\_\_

SHEET \_\_\_\_\_ OF \_\_\_\_\_

NOT APPROVED FOR PRELIMINARY CONSTRUCTION