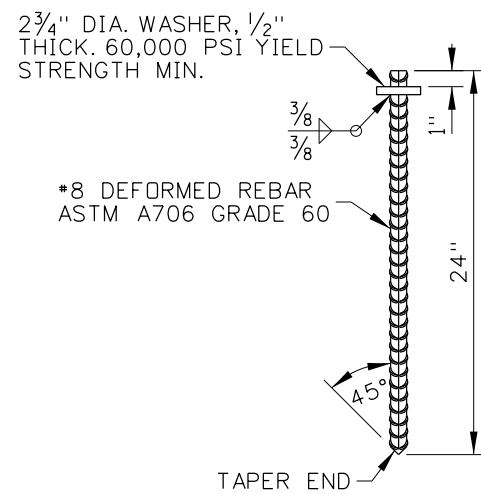
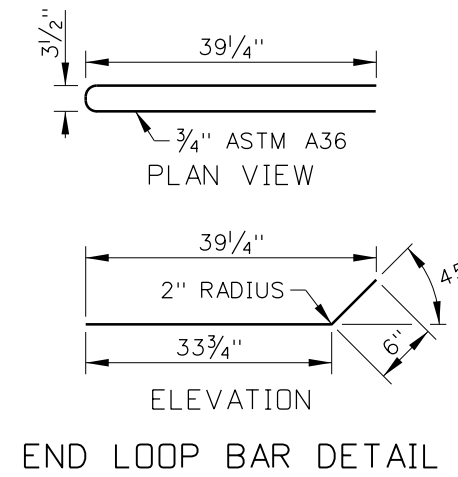


CONNECTING PIN DETAIL

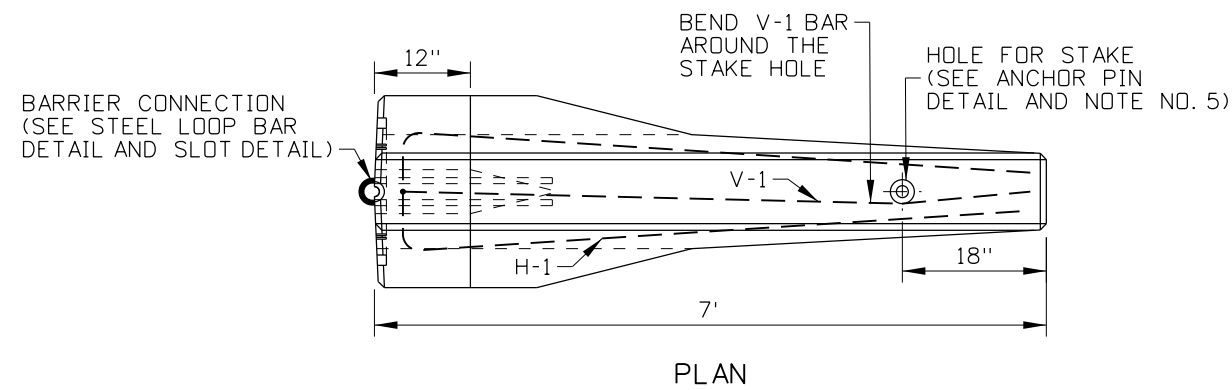


ANCHOR PIN DETAIL

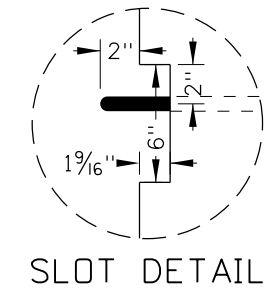


END LOOP BAR DETAIL

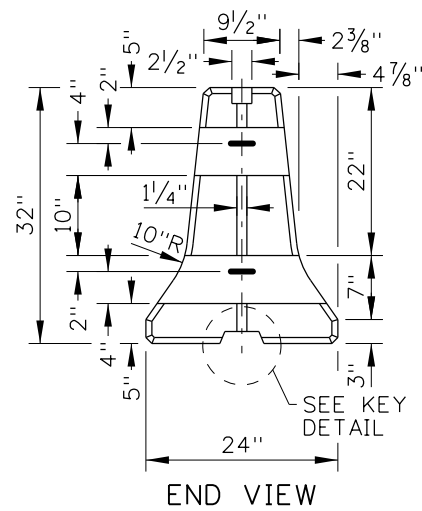
TERMINAL TYPE A REINFORCING STEEL TABLE				
MARK	LOCATION	BAR SIZE	NUMBER OF BARS	SKETCH
H-1	HORIZONTAL BAR.	NO. 5	1	<p>14'-6" TOTAL BAR LENGTH</p>
V-1	VERTICAL BAR.	NO. 5	1	<p>9'-2" TOTAL BAR LENGTH</p>



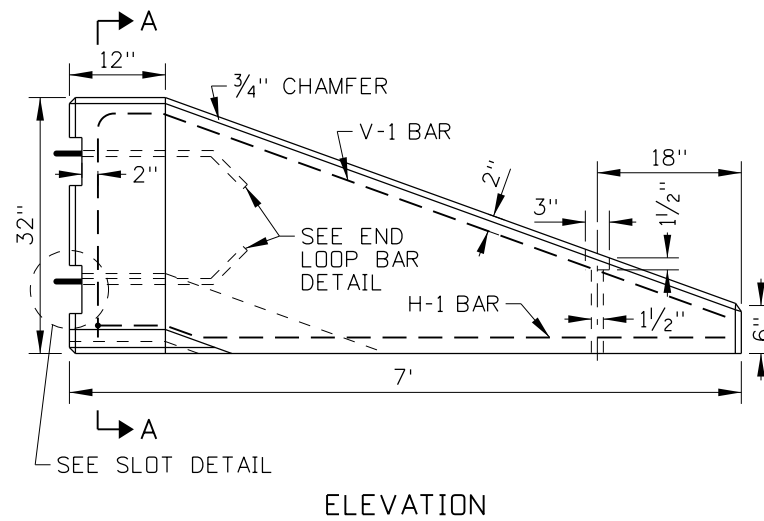
PLAN



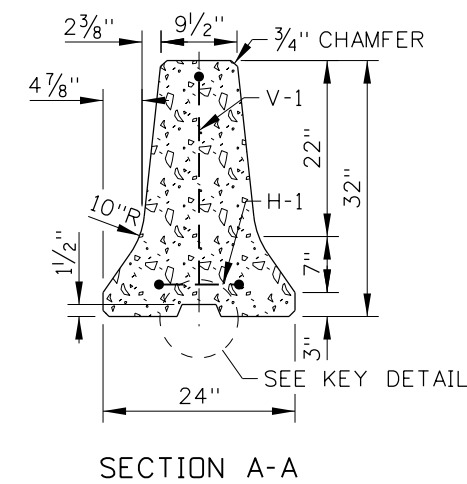
SLOT DETAIL



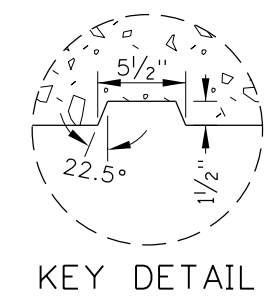
END VIEW



ELEVATION



SECTION A-A



KEY DETAIL

TERMINAL TYPE A

REVISIONS							
NO.	DATE	BY	NO.	DATE	BY	NO.	DATE
1	01-86	GB	6	12-92	MSM	11	09-10
2	08-86	GB	7	09-93	MSM	12	11-14
3	06-87	GB	8	02-96	MSM	13	03-19
4	04-89	GB	9	01-00	MSM	14	02-20
5	01-91	GB	10	12-04	MSM		

SCALES SHOWN ARE FOR 11" X 17" PRINTS ONLY  
 CADD FILE NAME: 612-20\_0420.dgn  
 DRAWING DATE: NOVEMBER, 1974

**IDAHO TRANSPORTATION DEPARTMENT**

BOISE IDAHO

ORIGINAL SIGNED BY: KEVIN SABLAN  
 DESIGN/TRAFFIC SERVICES ENGINEER

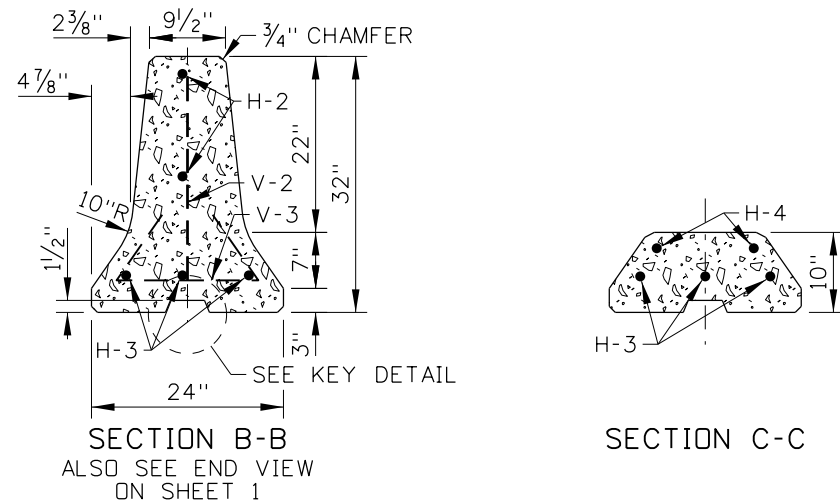
STANDARD DRAWING  
**PRECAST CONCRETE BARRIER TERMINALS**

ORIGINAL STORED AT: ITD, Headquarters 3311 West State Boise, Idaho

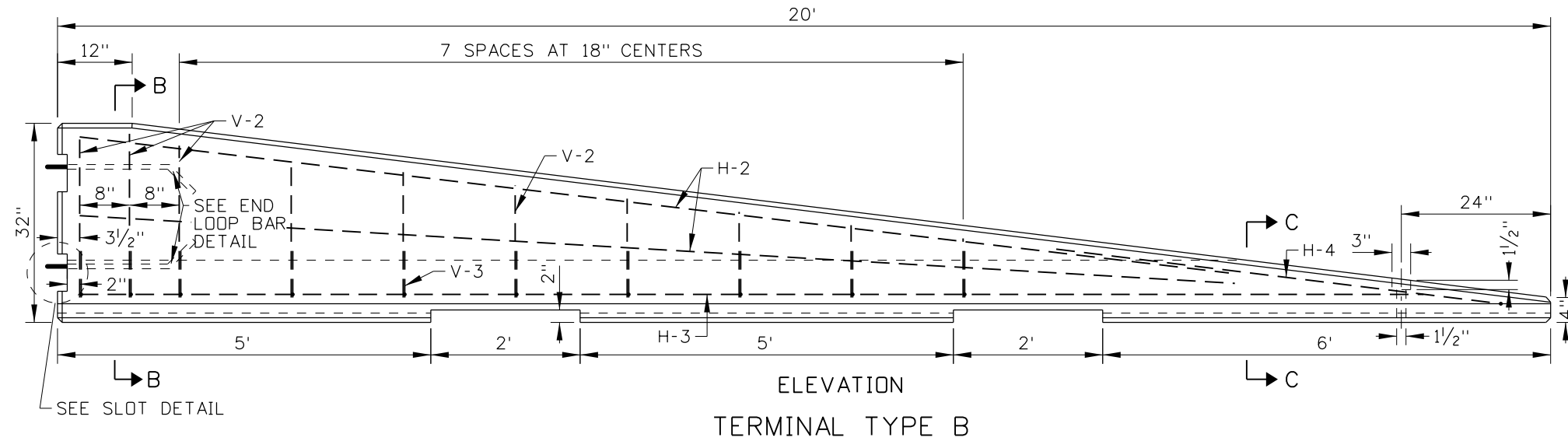
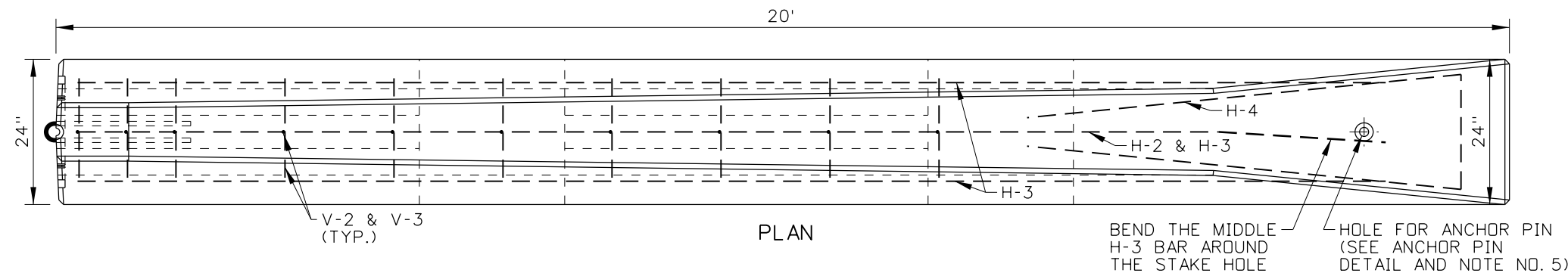
**English**

STANDARD DRAWING NO. 612-20

SHEET 1 OF 2



TERMINAL TYPE B REINFORCING STEEL TABLE																								
MARK	LOCATION	BAR SIZE	NUMBER OF BARS	SKETCH																				
H-2	HORIZONTAL BAR. TIED TO V-1 BARS.	NO. 5	2	15'-6"																				
H-3	HORIZONTAL BAR. TIED TO V2 BARS.	NO. 5	3	18'																				
H-4	HORIZONTAL BAR. AT END OF BARRIER ALONG TOP SLOPE.	NO. 5	1	6'-0" (sketch), 13'-10" TOTAL BAR LENGTH																				
V-2	VERTICAL BAR.	NO. 5	10	<table border="1"> <thead> <tr> <th>L (IN.)</th> <th>QTY.</th> </tr> </thead> <tbody> <tr><td>26</td><td>2</td></tr> <tr><td>25</td><td>1</td></tr> <tr><td>23</td><td>1</td></tr> <tr><td>21</td><td>1</td></tr> <tr><td>18</td><td>1</td></tr> <tr><td>16</td><td>1</td></tr> <tr><td>14</td><td>1</td></tr> <tr><td>12</td><td>1</td></tr> <tr><td>10</td><td>1</td></tr> </tbody> </table>	L (IN.)	QTY.	26	2	25	1	23	1	21	1	18	1	16	1	14	1	12	1	10	1
L (IN.)	QTY.																							
26	2																							
25	1																							
23	1																							
21	1																							
18	1																							
16	1																							
14	1																							
12	1																							
10	1																							
V-3	VERTICAL BAR. TIE TO V-1 AND H-2 BARS.	NO. 5	10	3'-2" TOTAL BAR LENGTH (sketch), 18" (sketch)																				



**NOTES**

1. THE TYPE A TERMINAL MAY BE USED ON THE TRAILING END OF PRECAST CONCRETE BARRIER IF THE TERMINAL IS OUTSIDE OF THE CLEAR-ZONE OF TRAVEL LANES IN THE OPPOSING DIRECTION.
2. THE TYPE B TERMINAL MAY BE USED WITHIN THE CLEAR-ZONE WHEN TRAFFIC SPEEDS ARE 40 MPH OR LESS AND THE AVAILABLE SPACE IS LIMITED BY RIGHT-OF-WAY CONSTRAINTS OR THE OTHER ROADSIDE FEATURES THAT PRECLUDE USING A GUARDRAIL TERMINAL OR CRASH CUSHION.
3. PRECAST TYPE A TERMINAL WITH CLASS 30AF OR HIGHER STRENGTH CONCRETE. PRECAST TYPE B TERMINAL WITH CLASS 50AF CONCRETE. CHAMFER TOP, BOTTOM, AND ENDS 3/4". PROVIDE 2" MINIMUM CONCRETE COVER OVER REINFORCING STEEL.
4. PIN CONNECT THE TERMINALS TO CONCRETE BARRIERS.
5. ANCHOR PIN THE TERMINALS AT THE TAPERED END. ENSURE THE ANCHOR PIN DOES NOT PROTRUDE BEYOND THE EXTERIOR OF THE TERMINAL SURFACE.
6. DRAWING NOT TO SCALE.

ORIGINAL STORED AT: ITD, Headquarters 3311 West State Boise, Idaho

REVISIONS								
NO.	DATE	BY	NO.	DATE	BY	NO.	DATE	BY
1	01-86	GB	6	12-92	MSM	11	09-10	PLR
2	08-86	GB	7	09-93	MSM	12	11-14	RDL
3	06-87	GB	8	02-96	MSM	13	03-19	RDL
4	04-89	GB	9	01-00	MSM	14	02-20	PBH
5	01-91	GB	10	12-04	MSM			

SCALES SHOWN ARE FOR 11" X 17" PRINTS ONLY  
 CADD FILE NAME: 612-20\_0420.dgn  
 DRAWING DATE: NOVEMBER, 1974

**IDAHO TRANSPORTATION DEPARTMENT**

BOISE IDAHO

ORIGINAL SIGNED BY: KEVIN SABLAN  
 DESIGN/TRAFFIC SERVICES ENGINEER

STANDARD DRAWING  
**PRECAST CONCRETE BARRIER TERMINALS**

**English**  
 STANDARD DRAWING NO. 612-20  
 SHEET 2 OF 2