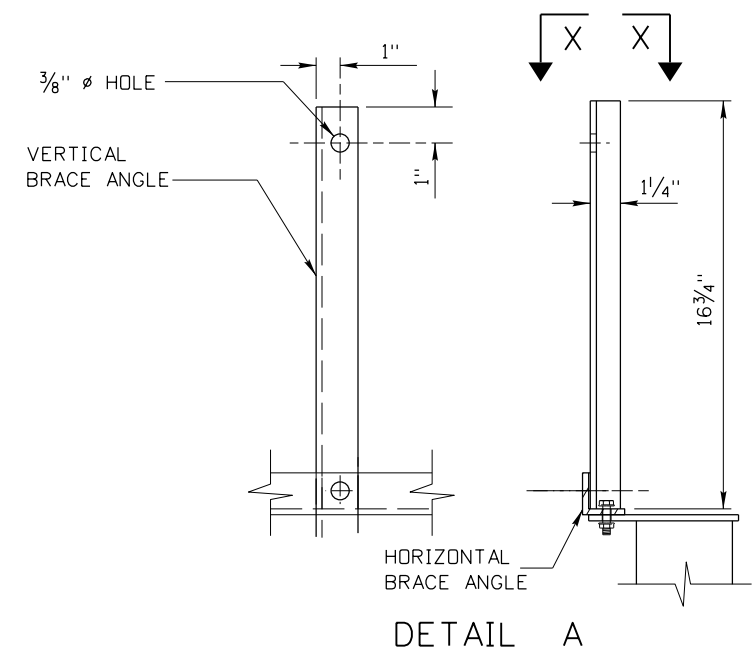
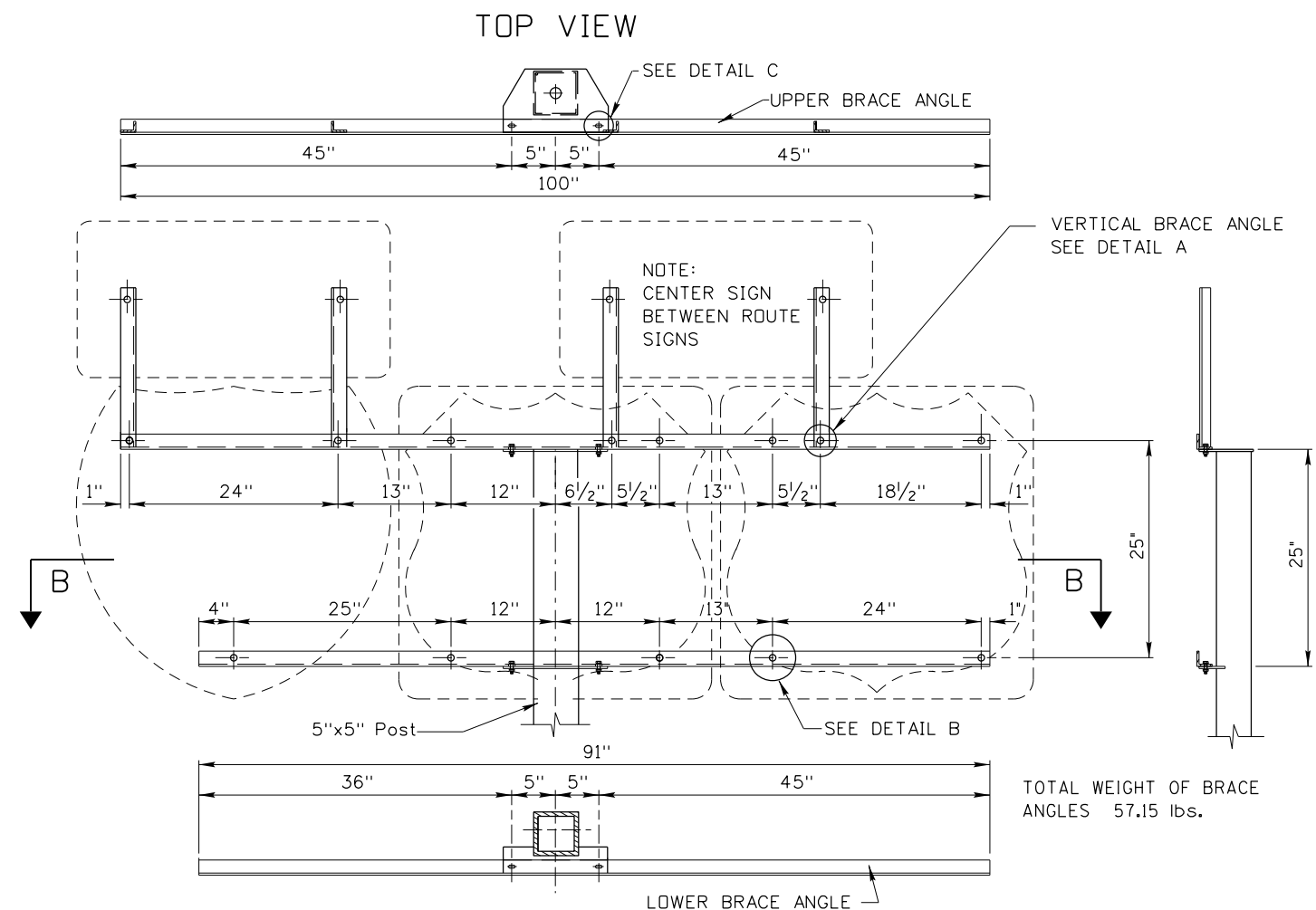


TOTAL WEIGHT OF BRACE ANGLES 40.07 lbs.

SEC. AA



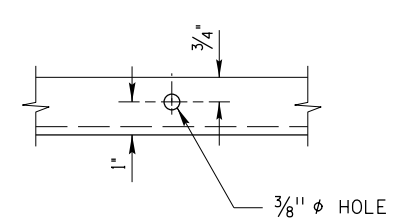
DETAIL A



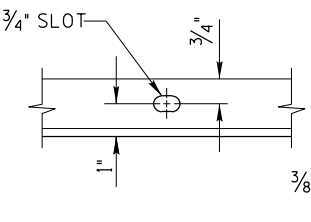
TOTAL WEIGHT OF BRACE ANGLES 57.15 lbs.

SEC. B-B

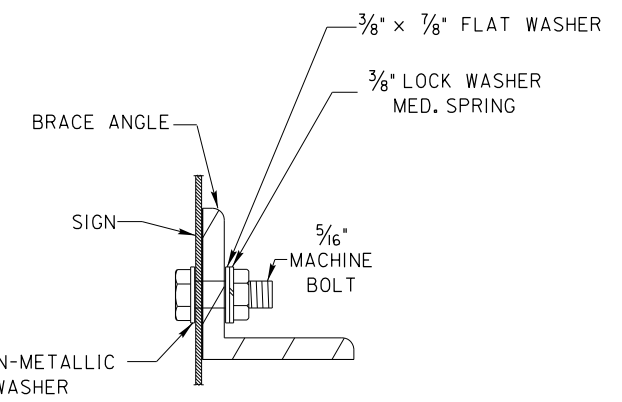
NOTE:  
THESE BRACE ANGLE ASSEMBLIES MAY BE MODIFIED TO ACCOMMODATE ADDITIONAL CARDINAL ROUTE MARKERS ABOVE EACH ROUTE SHIELD AS SHOWN ON THE PLANS. CONFIRMING ROUTE MARKERS DO NOT REQUIRE THE VERTICAL BRACE ANGLES.



DETAIL B



DETAIL C



TYPICAL SIGN ATTACHMENT DETAIL

- NOTES:
1. WEIGHTS OF BRACE ANGLES DO NOT INCLUDE GALVANIZING.
  2. ALL BRACE ANGLES SHALL BE 1 3/4" x 1 3/4" x 1/4" AT 2.77 LBS./FT WITH THE EXCEPTION OF THE VERTICAL BRACE ANGLE WHICH SHALL BE 1 3/4" x 1 1/4" x 1/4" AT 2.34 LBS./FT.
  3. DRAWING IS NOT TO SCALE.

| REVISIONS |       |     |     |      |    |     |      |    |
|-----------|-------|-----|-----|------|----|-----|------|----|
| NO.       | DATE  | BY  | NO. | DATE | BY | NO. | DATE | BY |
| 1         | 12-01 | NQB |     |      |    |     |      |    |
| 2         | 07-03 | NQB |     |      |    |     |      |    |
| 3         | 09-10 | HEB |     |      |    |     |      |    |
| 4         | 05-17 | HEB |     |      |    |     |      |    |

SCALES SHOWN ARE FOR 11" X 17" PRINTS ONLY  
CADD FILE NAME: 616-17\_0517.dgn  
DRAWING DATE: AUGUST, 1992

**IDAHO TRANSPORTATION DEPARTMENT**



BOISE IDAHO

ORIGINAL SIGNED BY: KEVIN SABLAN  
DESIGN/TRAFFIC SERVICES ENGINEER

STANDARD DRAWING  
**36" ROUTE AND AUXILIARY SIGN BRACE ANGLE ASSEMBLIES**  
REQUIRES STD. DWG. 616-6

**English**  
STANDARD DRAWING NO.  
**616-17**  
SHEET 1 OF 1

ORIGINAL STORED AT: ITD, Headquarters 3311 West State Boise, Idaho