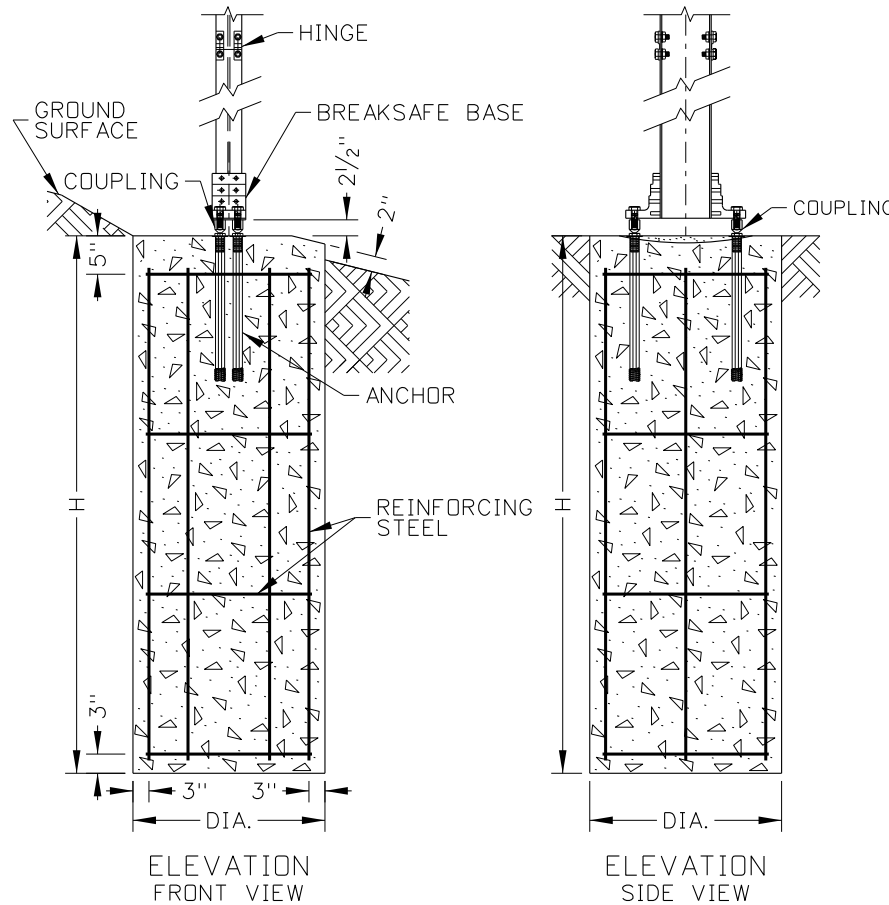
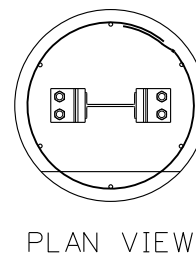
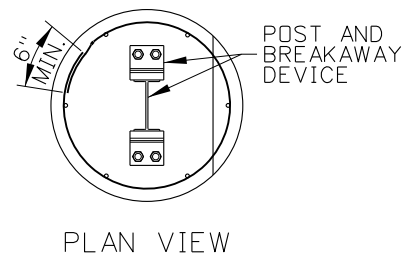
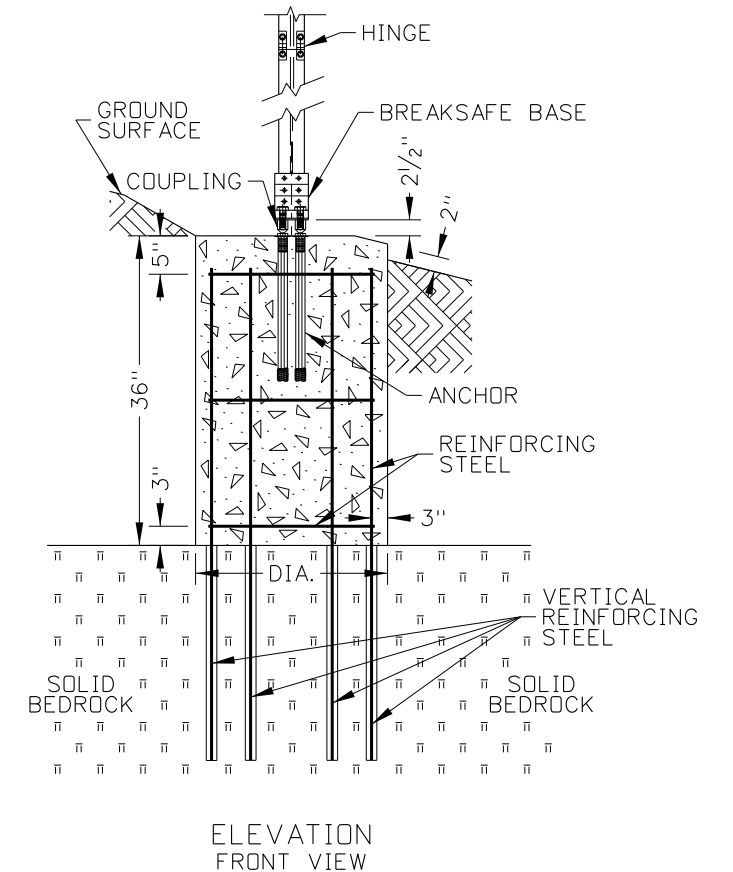


ANCHOR TEMPLATE DETAIL



FOUNDATION



FOUNDATION IN BEDROCK

SEE NOTE NO. 4

SIGN POST AND BASE ASSEMBLY TABLE								
POST TYPE	WIDE FLANGE POST SIZE	WEIGHT (LB/FT)	BREAKSAFE ASSEMBLY MODEL	FOUNDATION SIZE (DIAxH) (INCHxINCH)	X (INCH)	Y (INCH)	Z (INCH)	L (INCH)
A-1	W6x9	9	A16	24x60	5 ⁷ / ₈	9 ³ / ₈	4 ¹ / ₄	36
A-2	W8x10	10	B525	30x84	7 ¹ / ₈	15 ¹ / ₈	3	40
A-3	W8x13	13	B525	30x84	8	16	3	40
A-4	W8x18	18	B525	30x84	8 ¹ / ₈	16 ¹ / ₈	3	40
A-8	W12x19	19	B650	36x96	12 ¹ / ₈	20 ¹ / ₈	4	48
A-9	W14x22	22	B650	36x96	13 ³ / ₄	21 ³ / ₄	4	48

FOUNDATION MATERIAL TABLE							
FOUNDATION SIZE (DIAxH) (INCHxINCH)	CONCRETE (CU. YD.)	VERTICAL REINFORCING STEEL			REINFORCING STEEL HOOPS		
		BAR SIZE	NUMBER OF BARS	LENGTH (FEET)	BAR SIZE	NUMBER OF BARS	LENGTH (FEET)
24x60	0.6	4	6	26	4	4	21
30x84	1.3	4	6	38	4	4	28
36x96	2.1	4	8	60	4	5	42

FOUNDATION IN SOLID BEDROCK MATERIAL TABLE							
FOUNDATION SIZE (DIAxH) (INCHxINCH)	CONCRETE (CU. YD.)	VERTICAL REINFORCING STEEL			REINFORCING STEEL HOOPS		
		BAR SIZE	NUMBER OF BARS	LENGTH (FEET)	BAR SIZE	NUMBER OF BARS	LENGTH (FEET)
24x36	0.4	4	6	26	4	3	16
30x36	0.45	4	6	38	4	3	21
36x36	0.5	4	8	60	4	3	25

REVISIONS								
NO.	DATE	BY	NO.	DATE	BY	NO.	DATE	BY
1	03-21	RDL						

SCALES SHOWN ARE FOR 11" X 17" PRINTS ONLY
CADD FILE NAME: 616-5_0421.dgn
DRAWING DATE: DECEMBER, 2016

IDAHO TRANSPORTATION DEPARTMENT

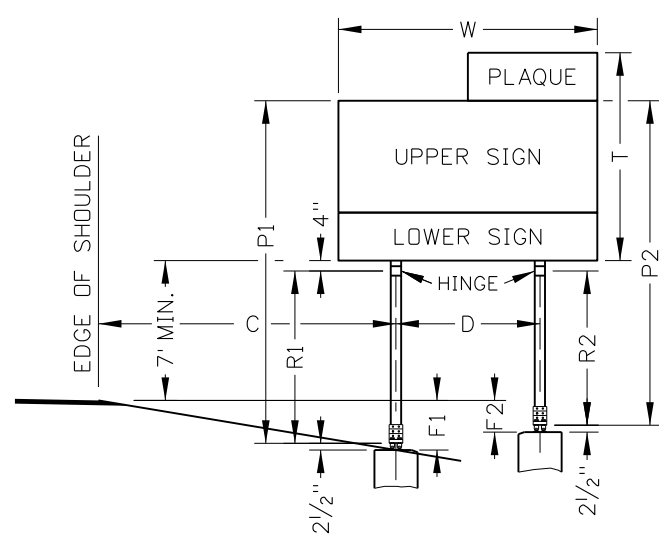
BOISE IDAHO

ORIGINAL SIGNED BY: KEVIN SABLAN
DESIGN/TRAFFIC SERVICES ENGINEER

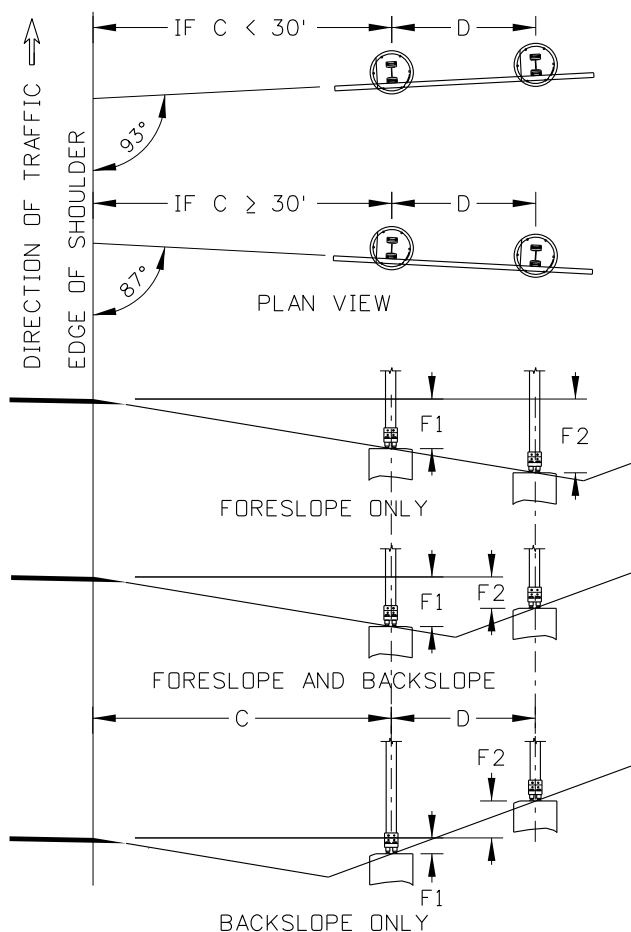
STANDARD DRAWING
BREAKAWAY STEEL SIGN POST AND FOUNDATION TYPE A - WIDE FLANGE

English
STANDARD DRAWING NO.
616-5
SHEET 1 OF 2

PROFESSIONAL ENGINEER
LICENSED
RYAN D. LANCASTER
STATE OF IDAHO
13683
MARCH 18, 2015



SIGN DIMENSIONS
SEE NOTE NO. 2



FOUNDATION LOCATIONS
SEE NOTE NO. 2

LEGEND

- C DISTANCE FROM EDGE OF SHOULDER TO CENTER OF FIRST POST
- D DISTANCE BETWEEN POSTS
- F1, F2 VERTICAL DISTANCE FROM TOP OF THE FOUNDATION TO THE PAVEMENT ELEVATION AT THE EDGE OF THE SHOULDER
- P1, P2 TOTAL POST LENGTH
- R1, R2 POST LENGTH UP TO THE HINGE
- T OVERALL HEIGHT OF SIGN
- W OVERALL WIDTH OF SIGN

NOTES

1. USE TYPE A - WIDE FLANGE POSTS WITH EXTRUDED ALUMINUM SIGNS WHERE ONE B POST IS INSUFFICIENT. USE TYPE A - WIDE FLANGE POSTS IN PAIRS.
2. SEE PROJECT SIGN SUMMARY FOR SIGN ASSEMBLY DIMENSIONS.
3. CAST FOUNDATION IN NATIVE SOILS IN AN AUGERED HOLE. IF AN AUGURED HOLE IS IMPRACTICAL, CAST THE FOUNDATION IN A CORRUGATED METAL PIPE FORM AND BACKFILLED IN ACCORDANCE WITH SECTION 210 IF APPROVED BY THE ENGINEER.
4. IF SOLID BEDROCK IS ENCOUNTERED, SOCKET VERTICAL REINFORCING STEEL FOR THE DEPTH SHOWN IN POLE FOUNDATION MATERIAL QUANTITIES. DRILL 2 INCH MINIMUM DIAMETER HOLES. FILL DRILLED HOLES WITH GROUT, TYPE B, CLASS 1. NOTIFY THE ENGINEER IF THE DEPTH TO SOLID BEDROCK IS LESS THAN 36". IF LESS THAN 36", REDESIGN OF THE FOUNDATION MAY BE REQUIRED.
5. ENSURE THE FOUNDATION AND NON-BREAKAWAY PARTS OF THE BASE DO NOT PROTRUDE MORE THAN 4 INCHES ABOVE THE GROUND SURFACE.
6. INSTALL BREAKAWAY SUPPORT SYSTEM IN ACCORDANCE WITH MANUFACTURERS INSTRUCTIONS. USE ANCHOR TEMPLATE TO HOLD ANCHORS SOLID AND LEVEL.
7. DRAWING NOT TO SCALE.

REVISIONS								
NO.	DATE	BY	NO.	DATE	BY	NO.	DATE	BY
1	03-21	RDL						

SCALES SHOWN ARE FOR 11" X 17" PRINTS ONLY
CADD FILE NAME: 616-5_0421.dgn
DRAWING DATE: DECEMBER, 2016

IDAHO TRANSPORTATION DEPARTMENT



BOISE IDAHO

ORIGINAL SIGNED BY: KEVIN SABLAN
DESIGN/TRAFFIC SERVICES ENGINEER

STANDARD DRAWING
BREAKAWAY STEEL SIGN POST AND FOUNDATION TYPE A - WIDE FLANGE

English
STANDARD DRAWING NO.
616-5
SHEET 2 OF 2