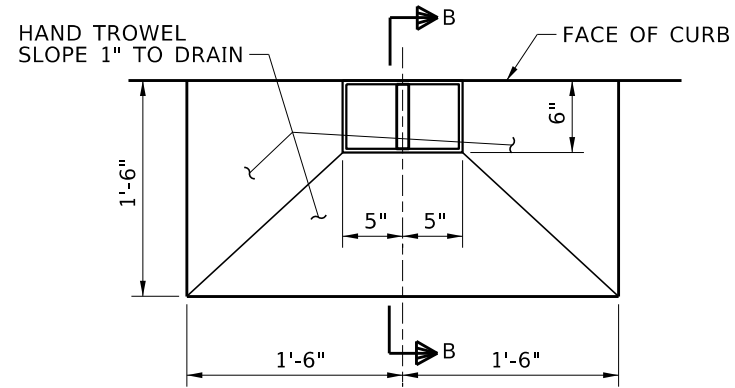


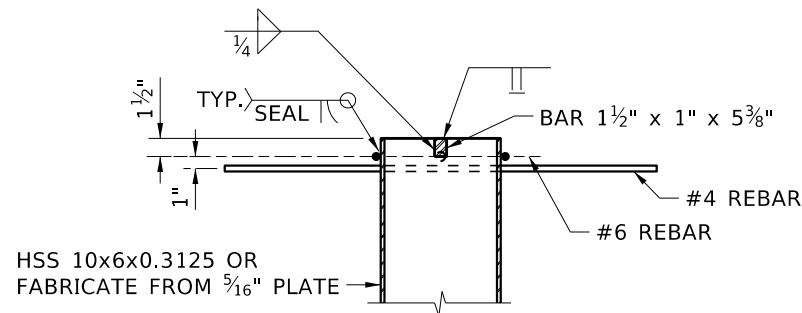
**DRAIN PLAN**  
3/4" = 1'-0"



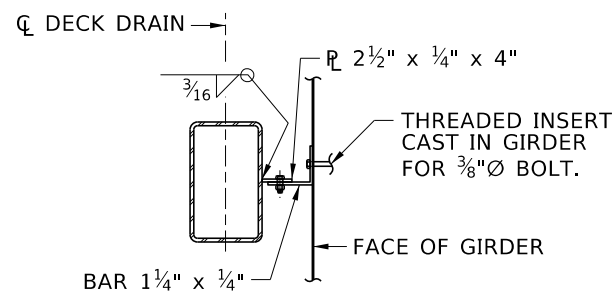
**FINISHED DECK DRAIN PLAN**  
3/4" = 1'-0"

**DRAIN NOTES**

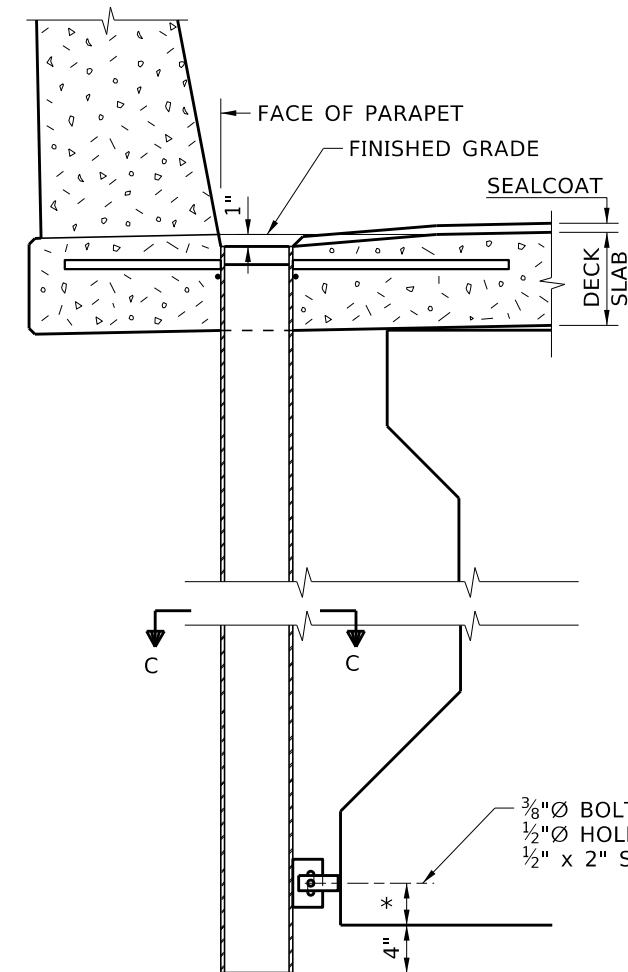
1. HOT DIP GALVANIZE DRAIN ASSEMBLY AFTER FABRICATION IN ACCORDANCE WITH ASTM A123.
2. SEAL WELD SEAMS NOT SHOWN WELDED.
3. GRIND SMOOTH SEAMS ON TOP OF THE DRAIN.
4. FIELD BEND OR CUT ANY BARS THAT CONFLICT WITH DRAINS.
5. PROVIDE STRUCTURAL STEEL IN ACCORDANCE WITH ASTM A709 GRADE 36.
6. PROVIDE STRUCTURAL STEEL TUBING IN ACCORDANCE WITH ASTM A500 OR A501.
7. PROVIDING AND INSTALLING THE DRAIN ASSEMBLIES IS INCIDENTAL TO PAY ITEM 502-310A.



**SECTION A-A**  
3/4" = 1'-0"



**SECTION C-C**  
3/4" = 1'-0"



**SECTION B-B**  
3/4" = 1'-0"

\* ADJUST AS REQUIRED TO CLEAR REINFORCEMENT AND STRAND.

**DECK DRAIN LAYOUT**  
3/4" = 1'-0"

REVISIONS			
NO.	DATE	BY	DESCRIPTION

DESIGNED
DESIGN CHECKED
DETAILED
DWG. CHECKED
CORRECTIONS

SCALES SHOWN ARE FOR 11" X 17" PRINTS ONLY
CADD FILE NAME Standards\Bridg Standard Drawings B02_2A.DGN
DRAWING DATE: OCT 2023

**IDAHO TRANSPORTATION DEPARTMENT**

YOUR Safety → YOUR Mobility → YOUR Economic Opportunity

APPROVED BY: BRIDGE ENGINEER **MICHAEL T. JOHNSON** DATE: \_\_\_\_\_

<b>ENGLISH</b>
PROJECT NO.

<b>BRIDGE DRAIN DETAILS - TYPE 1</b>
<b>BRIDGE LRFD DESIGN MANUAL, B2.2A</b>

<b>BRIDGE PLANS</b>	
BRIDGE KEY NO.	
COUNTY	KEY NO.
BRIDGE DWG. NO.	SHEET OF