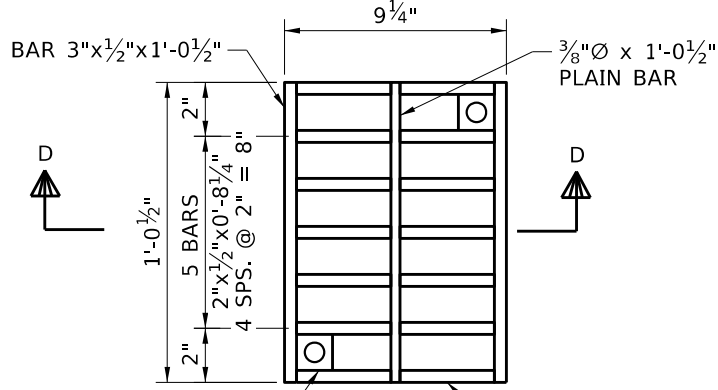
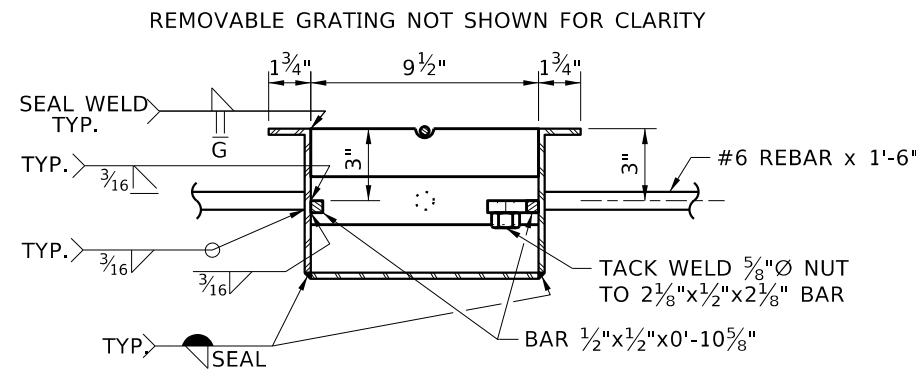


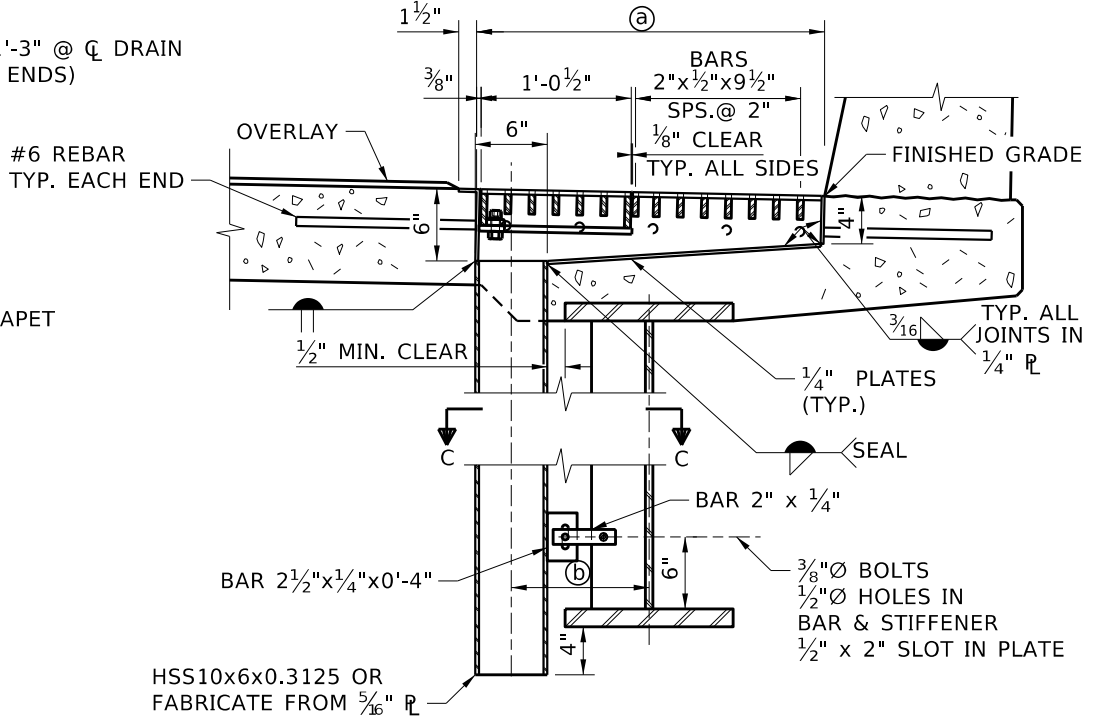
**DRAIN PLAN**  
3/4" = 1'-0"  
(REMOVABLE GRATING NOT SHOWN)



**REMOVABLE GRATE**  
1 1/2" = 1'-0"

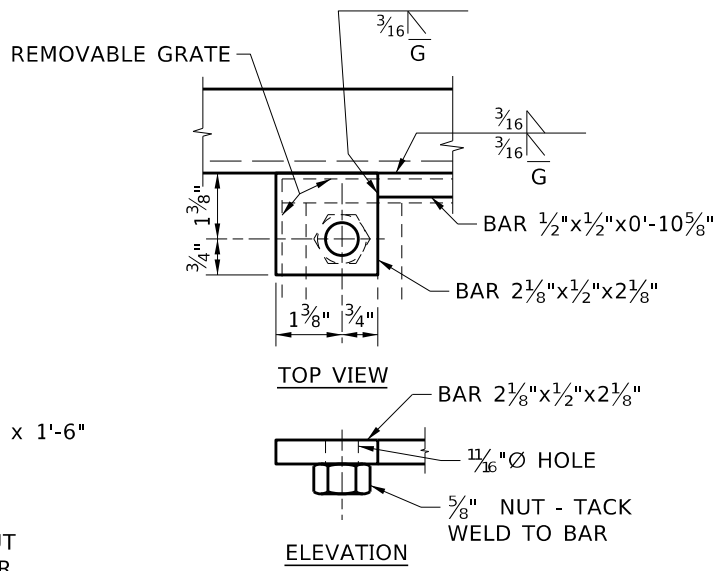


**SECTION B-B**  
1 1/2" = 1'-0"

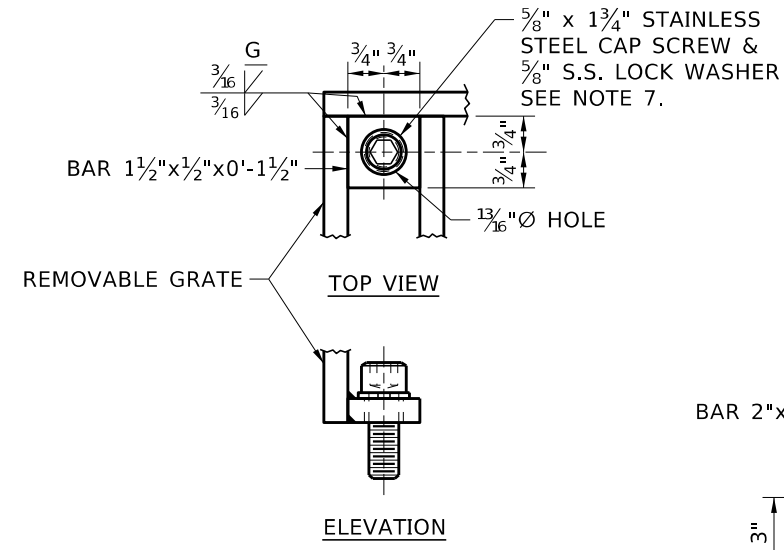


**SECTION A-A**  
3/4" = 1'-0"

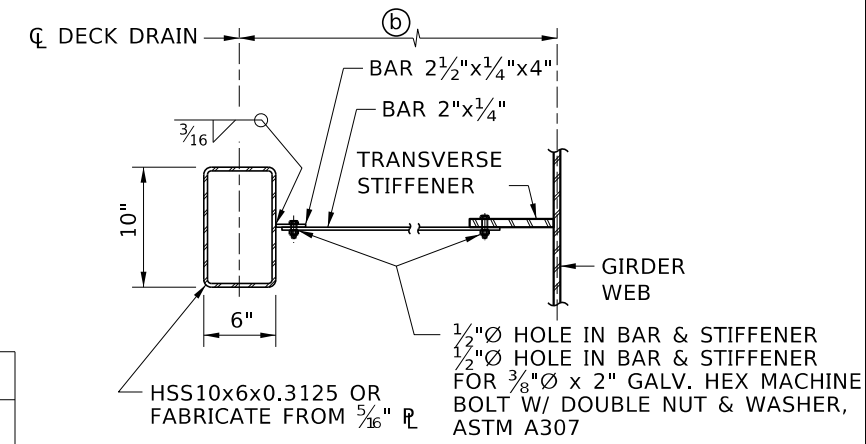
DIMENSION	
(a)	
(b)	



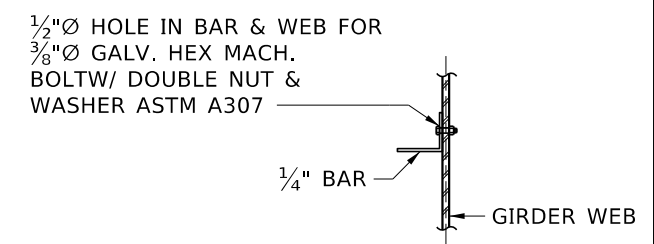
**DETAIL E**  
LOWER BRACKETS



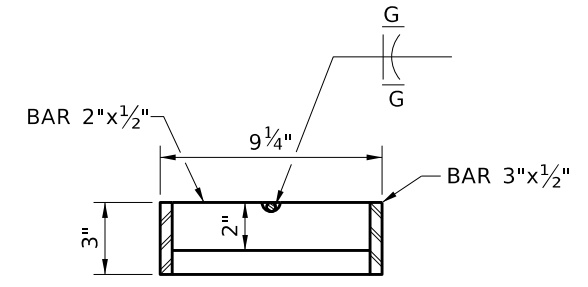
**DETAIL D**  
UPPER BRACKETS



**SECTION C-C**  
3/4" = 1'-0"



**ALTERNATE CONNECTION DETAIL**  
3/4" = 1'-0"



**SECTION D-D**  
1 1/2" = 1'-0"

**DRAIN NOTES**

1. HOT DIP GALVANIZE DRAIN ASSEMBLY AFTER FABRICATION IN ACCORDANCE WITH ASTM A123.
2. SEAL WELD SEAMS NOT SHOWN. GRIND SMOOTH SEAMS ON TOP OF DRAIN.
3. SUBMIT SHOP DRAWINGS IN ACCORDANCE WITH 105.02.
4. FIELD BEND OR CUT ANY BARS THAT CONFLICT WITH DRAINS.
5. PROVIDE STRUCTURAL STEEL IN ACCORDANCE WITH ASTM A709 GRADE 36.
6. PROVIDE STRUCTURAL STEEL TUBING IN ACCORDANCE WITH ASTM A500 OR A501.
7. PROVIDE 5/8" - 11 UNC x 1 3/4" STAINLESS STEEL HEXAGON SOCKET HEAD CAP SCREWS 18-8 SS.
8. PROVIDING AND INSTALLING THE DRAIN ASSEMBLIES IS INCIDENTAL TO PAY ITEM 502-310A.

REVISIONS			
NO.	DATE	BY	DESCRIPTION

DESIGNED	
DESIGN CHECKED	
DETAILED	
DWG. CHECKED	
CORRECTIONS	

SCALES SHOWN ARE FOR 11" X 17" PRINTS ONLY

CADD FILE NAME: Standards\Bridges Standard Drawings\B02\_2B.DGN

DRAWING DATE: OCT 2023

**IDAHO TRANSPORTATION DEPARTMENT**

YOUR Safety → YOUR Mobility → YOUR Economic Opportunity

APPROVED BY: BRIDGE ENGINEER **MICHAEL T. JOHNSON** DATE:  

**ENGLISH**

PROJECT NO.  

**BRIDGE DRAIN DETAILS - TYPE 2**

BRIDGE LRFD DESIGN MANUAL, B2.2B

<b>BRIDGE PLANS</b>	
BRIDGE KEY NO.	
COUNTY	KEY NO.
BRIDGE DWG. NO.	SHEET OF