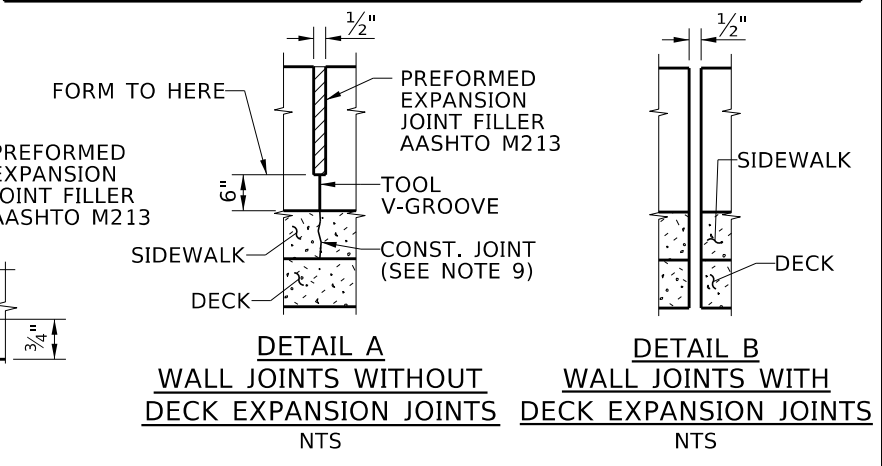
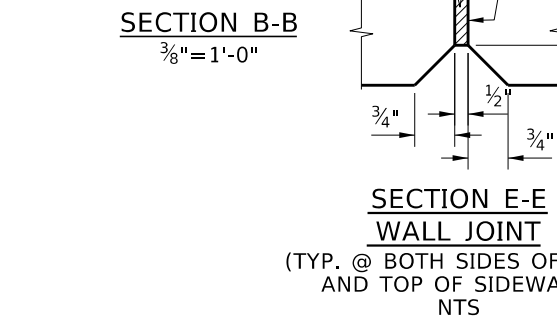
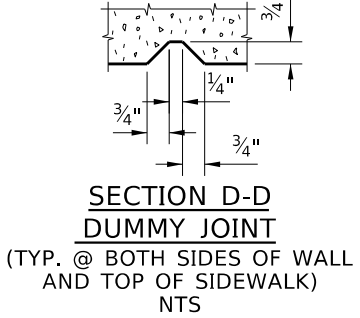
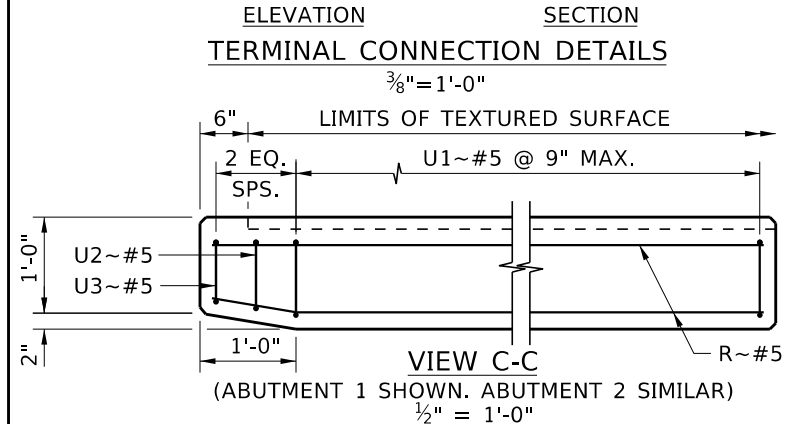
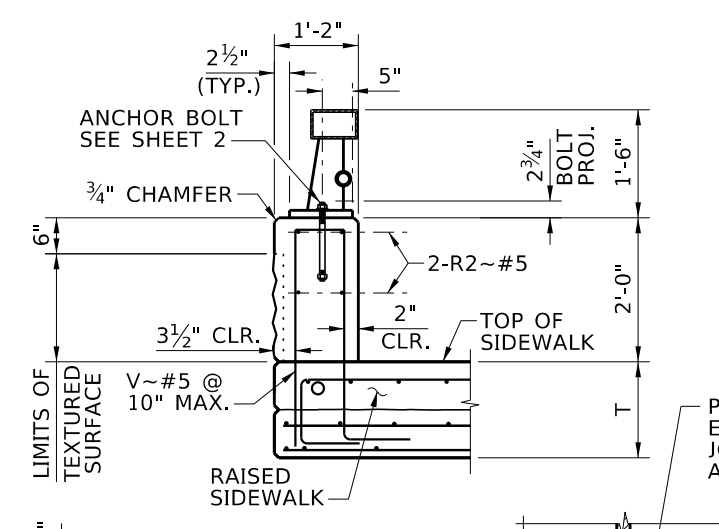
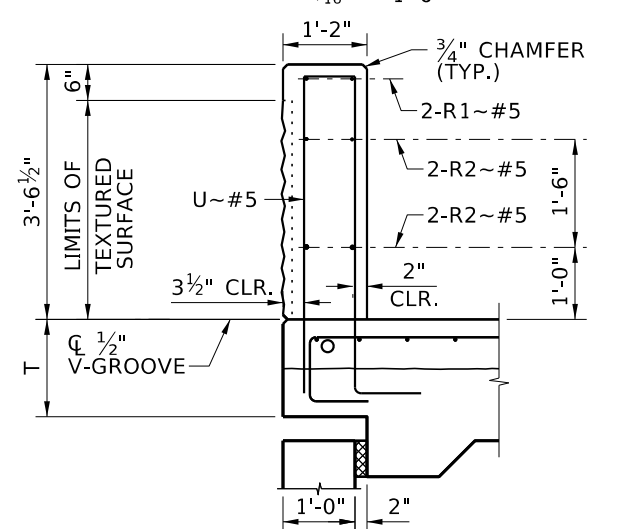
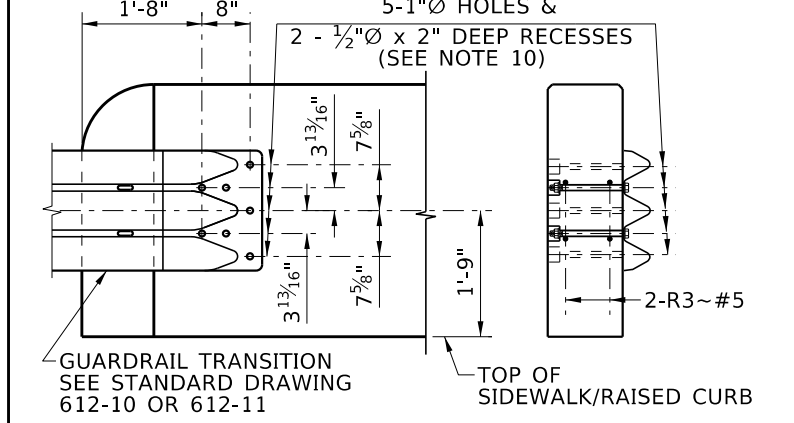
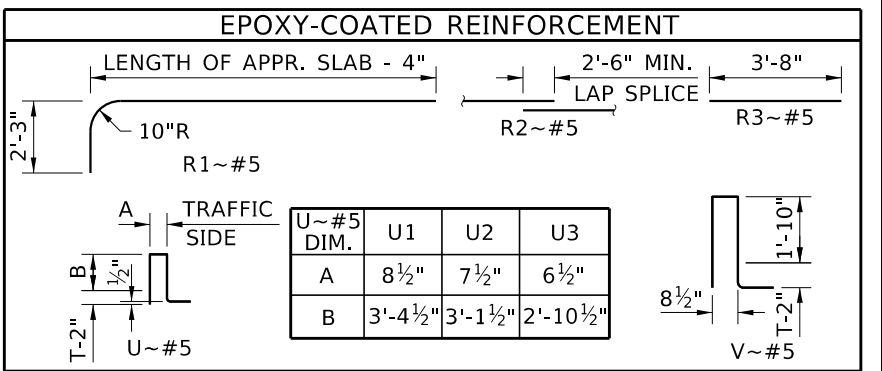
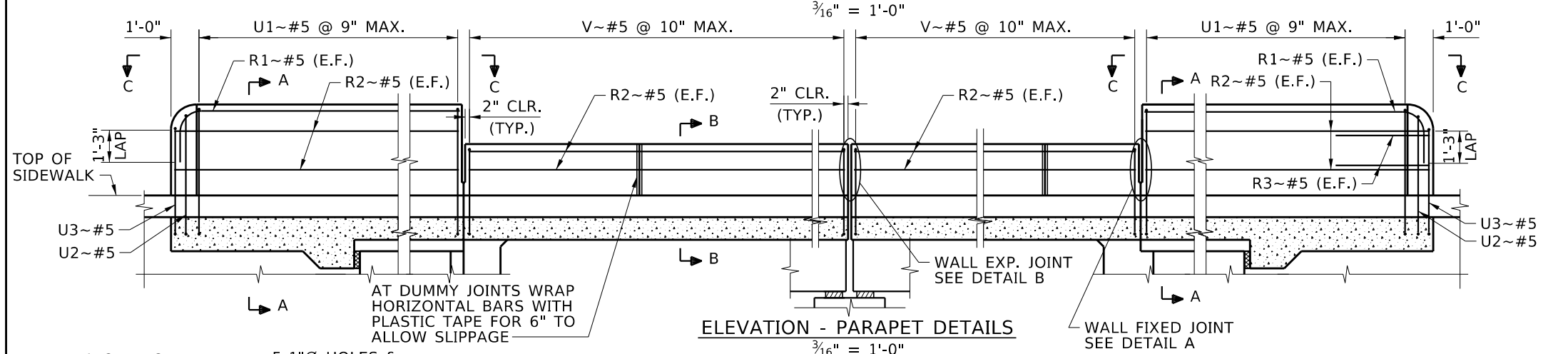


- PARAPET NOTES**
1. PROVIDE CLASS 40AF CONCRETE.
  2. PROVIDE EPOXY-COATED GRADE 60 TYPE S REINFORCEMENT IN ACCORDANCE WITH 708.02.
  3. PROVIDE A RUBBED SURFACE FINISH TO THE INSIDE (TRAFFIC) FACE IN ACCORDANCE WITH 502.03 PART 1.
  4. PROVIDE A TEXTURED SURFACE TO OUTSIDE FACE OF CONCRETE PARAPET. PROVIDE TEXTURED SURFACE IN ACCORDANCE WITH 575, USING PATTERN \_\_\_\_\_ WITH A MAX. DEPTH OF 1 1/2".
  5. CONSTRUCT PARAPET PLUMB, WITH STEEL POSTS SQUARE TO THE TOP OF PARAPET. PROVIDE TYPE B CLASS 1 GROUT IN ACCORDANCE WITH 705.02 UNDER POST BASE IF GAPS GREATER THAN 1/16" EXIST.
  6. PLACE PARAPET IN THE SAME SEQUENCE AS THE DECK PLACEMENT. CONSTRUCT USING CAST-IN-PLACE METHOD.
  7. WATER CURE THE CONCRETE SURFACE IN ACCORDANCE WITH 502.03 PART J.
  8. ADJUST HEIGHT OF PARAPET TO COMPENSATE FOR THE CAMBER AND LOAD DEFLECTION OF THE SUPERSTRUCTURE. CALCULATE THE AMOUNT OF ADJUSTMENT FOR APPROVAL.
  9. PROVIDE WALL JOINTS AT INTERIOR BENTS WITHOUT SLAB EXPANSION JOINTS. PROVIDE DUMMY JOINTS UNIFORMLY THE LENGTH OF THE BRIDGE SPACED AT NOT LESS THAN 6'-0" NOR GREATER THAN 12'-0".
  10. FORM OR CORE HOLES AND RECESSES IN TERMINAL CONNECTION. PERCUSSION DRILLING IS NOT PERMITTED. ADJUST PLACEMENT OF REINFORCING TO AVOID BOLT HOLES AND RECESSES. PROVIDE BOLT RECESSES ONLY WHEN PEDESTRIAN SIDEWALKS ARE ADJACENT TO BACK OF RAIL. PROVIDE BOLTS OF SUFFICIENT LENGTH TO EXTEND 3/4" BEYOND NUT.
  11. PROVIDE TEXTURED SURFACE ONLY ON 1 SIDE. INCREASE 1'-2" PARAPET THICKNESS TO 1'-4" FOR TEXTURED SURFACE ON BOTH SIDES.
  12. PAYMENT FOR TEXTURED SURFACE IS PAY ITEM 575-005A.



**REVISIONS**

NO.	DATE	BY	DESCRIPTION

**DESIGNED**

DESIGN CHECKED
DETAILED
DWG. CHECKED
CORRECTIONS

**SCALES SHOWN ARE FOR 11" X 17" PRINTS ONLY**

**CADD FILE NAME**  
Standrds/Bridge Standard Drawings/ 813\_3A.DGN.dgn

**DRAWING DATE:**  
OCT 2023

**APPROVED BY:**  
BRIDGE ENGINEER **MICHAEL T. JOHNSON** DATE: \_\_\_\_\_

**IDAHO TRANSPORTATION DEPARTMENT**

YOUR Safety → YOUR Mobility → YOUR Economic Opportunity

**ENGLISH**

PROJECT NO. \_\_\_\_\_

**COMBINATION RAILING SHEET 1 OF 2**

WITH APPROACH SLAB @ INTEGRAL ABUTMENT

BRIDGE LRFD DESIGN MANUAL, B13.3A

**BRIDGE PLANS**

BRIDGE KEY NO.	
COUNTY	KEY NO.
BRIDGE DWG. NO.	SHEET OF